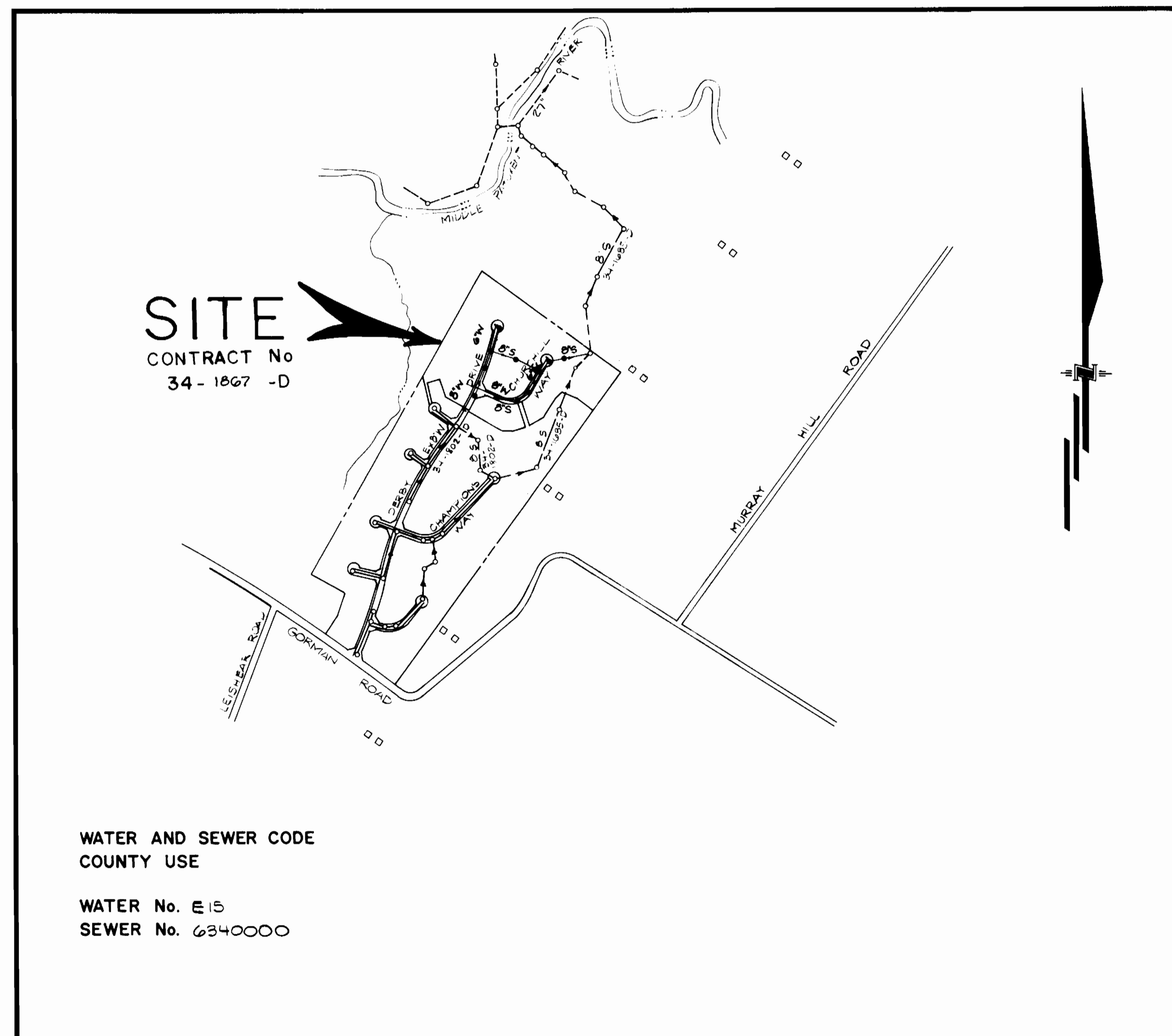


TYPE OF BUILDING	Single Family Detached
NUMBER OF UNITS	35
NUMBER OF SHC's	35
NUMBER OF WHC's	35
DRAINAGE AREA	Middle Patuxent River



**SITE**  
CONTRACT No  
34-1867-D

WATER AND SEWER CODE  
COUNTY USE  
  
WATER No. E 15  
SEWER No. 6340000

VICINITY MAP  
SCALE: 1" = 600'

**CONTRACT NO. 34-1867-D**  
**HUNTERS CREEK FARM**  
**SECTION 1 — AREA 3**

**HOWARD COUNTY, MARYLAND**  
**DEPARTMENT OF PUBLIC WORKS**

**GENERAL NOTES**

- Approximate locations of existing mains are shown. The contractor shall take all necessary precautions to protect existing mains and services and maintain uninterrupted supply. Any damage incurred shall be repaired immediately to the satisfaction of the Engineer, at the contractor's expense.
- All horizontal controls are based on Maryland State Coordinates.
- All vertical controls are based on U.S.G.S. Datum.
- All pipe elevations shown are invert elevations.
- Clear all utilities by a minimum of 6". Clear all poles by 2'-0" minimum or tunnel as required. Any cost incurred by the contractor for tunnelling or bracing at poles shall be included in unit prices bid for construction of the main.
- For details not shown on the drawings, use Howard County Standard Details.
- For materials and construction methods, use Howard County Standard Specifications & Howard County Design Manual, Volume IX. The Contractor shall have a copy of Volume IX on the job.
- Contractor shall locate existing utilities a minimum of two (2) weeks in advance of construction operations in the vicinity of proposed utilities, at his own expense.
- Contractor shall notify the following utilities or agencies at least five (5) working days before starting work shown on these plans.

State Highway Administration	531-5533	Baltimore Gas & Electric Company	
"Miss Utility"	1-559-0100	Contractor Services	561-2585
Chesapeake & Potomac (CBP)		Underground Damage Control	234-5621
Telephone Company	725-9976	Trouble-shooting	298-9013
Colonial Pipeline Company	795-1390	Bureau of Utilities, Howard County	992-2366
- Trees are to be protected from damage to maximum extent. Trees located within the construction strip are not to be removed or damaged by the contractor.
- Contractor shall remove trees, stumps and roots along line of excavation as directed by the Engineer. Payment for such removal shall be included in the unit price bid for construction of the main.
- Place regulation "Men Working" and warning signs as required to comply with Maryland State Highway Administration Manual of Traffic Control for Highway Construction and Maintenance Operations.
- All water mains to be D.I.P., class 52 only.
- Top of all water mains to have a minimum of 3'-1/2' cover unless otherwise noted.
- Valves adjacent to tees shall be strapped to tees.
- Block all fittings with concrete.
- Bury line elevations on fire hydrants shall be set to the elevations shown on the drawings. All fire hydrants shall be strapped and buttressed with concrete in accordance with standard details. Soil around the fire hydrant to be compacted in accordance with Sections 10.03 and 10.08 of the Standard Specifications.
- All water house connections shall be for an inside meter setting.
- The contractor shall not operate any water main valves on the existing system.
- For all Copper Water House Connections, utilize flared type fittings only.
- All sewer mains shall be CSPX, VCPX, RCSP, PVC or ACP - Class 2400 unless otherwise noted.
- The contractor shall provide a joint in all sewer mains within 2'-0" of exterior manhole wall.
- All manholes shall be 4'-0" inside diameter, unless otherwise noted.
- 12" and 16" manhole wall thicknesses shown on profiles pertain to brick manholes only.
- Manholes designated W.T. in plan and profile shall have watertight frames and covers. (See Standard Detail G.5.52) Where watertight manhole frame and cover is used, set top of frame 1'-6" above finished grade. (See Standard Detail G.5.41)
- House(s) with the symbol "CNS" indicates that cellar cannot be served.
- Water main and water house connection lines must have a minimum of one foot separation from either sanitary sewer or sewer house connections as they cross. Except at crossings, water and sewer lines shall have a minimum horizontal separation of 10'.
- All D.I.P. fittings shall be in accordance with A.W.W.A. except for 8" C-IEB ductile iron compact fittings, 8-inch through 12-inch for water and other liquids.

Sediment Control Measures will be implemented in accordance with Article No 15 of the Specifications & with Road Construction Plan F 88-291 ; Drawings 445 of 5 Sediment & Erosion Control.

REVIEWED FOR HOWARD SOIL CONSERVATION DISTRICT AND MEETS TECHNICAL REQUIREMENT.  
*J. Helms* SIGNATURE      12/19/88 DATE  
 U.S. SOIL CONSERVATION SERVICE  
 THIS DEVELOPMENT PLAN IS APPROVED FOR SOIL EROSION AND SEDIMENT CONTROL BY THE HOWARD SOIL CONSERVATION DISTRICT.  
 APPROVED:  
*John* SIGNATURE      12/12/88 DATE  
 HOWARD S.C.D.

QUANTITIES			
ITEM	ESTIMATED	AS-BUILT	MATERIAL / SUPPLIER
4" WATER		48 LF.	DIP. GRIFFIN PIPE / AMSTED IND.
4" VALVE		1	KENNEDY
4" SHC		88 LF.	DIP. GRIFFIN PIPE / AMSTED IND.
3 BLOWOFF	1 EA	1	KENNEDY
FIRE HYDRANTS	3 EA	3	KENNEDY
4 DIAM	11 EA	11	ATLANTIC CONCRETE
6 SHC	765 LF	328 LF. 545'	NATIONAL AMERICAN
1" WHC	366 LF	353 LF.	VINCENT BRASS / HALSTEAD IND.
3/4 WHC	502 LF	599 LF.	VINCENT BRASS / HALSTEAD IND.
8" WATER	1096 LF	1103 LF.	GRIFFIN PIPE / AMSTED IND.
6" WATER	324 LF	340 LF.	GRIFFIN PIPE / AMSTED IND.
8" SEWER	1285 LF	1377 LF.	NATIONAL AMERICAN / MUNICIPAL & CONT.
8" DIP SEWER	508 LF	511 LF.	GRIFFIN PIPE / AMSTED IND.

DEPARTMENT OF PUBLIC WORKS  
HOWARD COUNTY, MARYLAND  
 DIRECTOR OF PUBLIC WORKS      12/14/88 DATE  
*Robert Benner* SIGNATURE  
 CHIEF, BUREAU OF UTILITIES  
 CHIEF, BUREAU OF ENGINEERING      12/21/88 DATE  
*Paul* SIGNATURE  
 CHIEF, LAND DEVELOPMENT DIV.      12/20/88 DATE

**GLW** GUTSCHICK LITTLE & WEBER, P.A.  
ENGINEERS, PLANNERS, SURVEYORS  
 3909 NATIONAL DRIVE, SUITE 250, BURTONSVILLE OFFICE PARK  
 BURTONSVILLE, MD 20886  
 (301) 421-4024



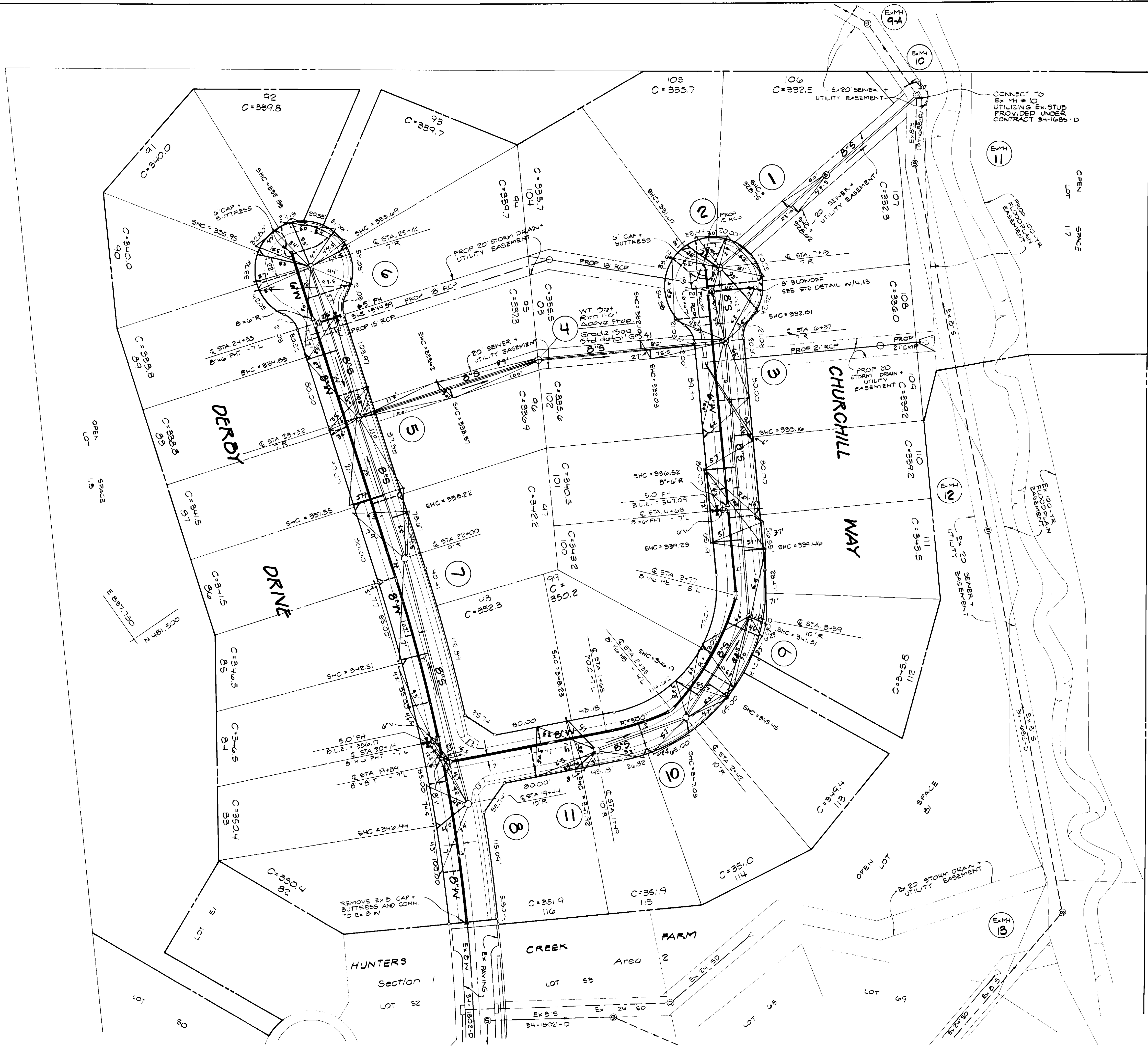
DES: GPM			
DRN: GPM			
CHK: OKG			
DATE: JULY 1985	BY: NO.	REVISION	DATE

TITLE SHEET  
 600' SCALE MAP NO. 42      BLOCK NO. 19

HUNTERS CREEK FARM  
SECTION 1 AREA 3  
LOTS 82 THRU 116  
G<sup>TH</sup> ELECTION DISTRICT  
CONTRACT NO. 34-1867-D

SCALE AS SHOWN  
SHEET 1 OF 3

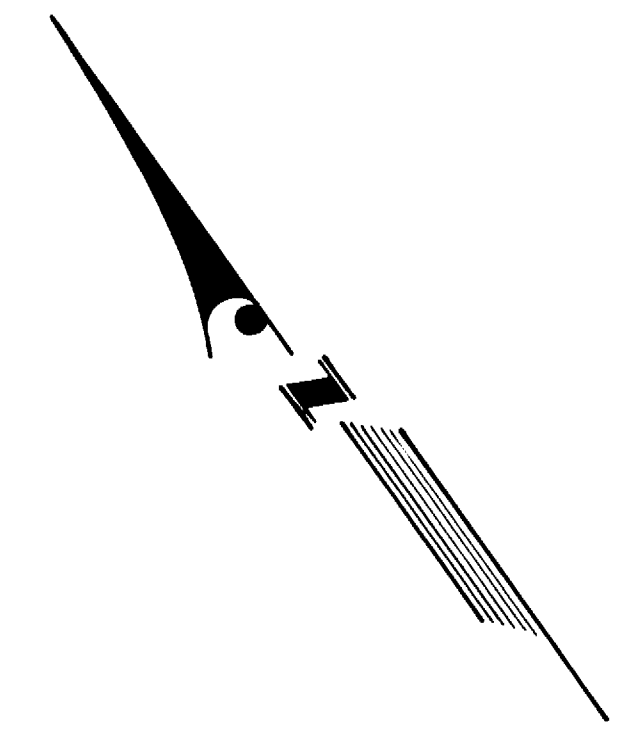
AS-BUILT 10.26.90



N 481,280  
E 534,000

N 482,000  
E 537,750

E 537,750  
N 481,500



PLAN SCALE  
1" = 50'

DEPARTMENT OF PUBLIC WORKS  
HOWARD COUNTY, MARYLAND

*James R. ...* 12-21-88  
DIRECTOR OF PUBLIC WORKS DATE

*Richard ...* 12-14-88  
CHIEF, BUREAU OF UTILITIES DATE

*...* 12-21-88  
CHIEF, BUREAU OF ENGINEERING DATE

*...* 12/18/88  
CHIEF, LAND DEVELOPMENT DIV DATE

**GW** GUTSCHICK LITTLE & WEBER, P.A.  
ENGINEERS, PLANNERS, SURVEYORS

3909 NATIONAL DRIVE, SUITE 250, HURTONSVILLE OFFICE PARK  
HURTONSVILLE, MD 20886  
(301) 421-4024



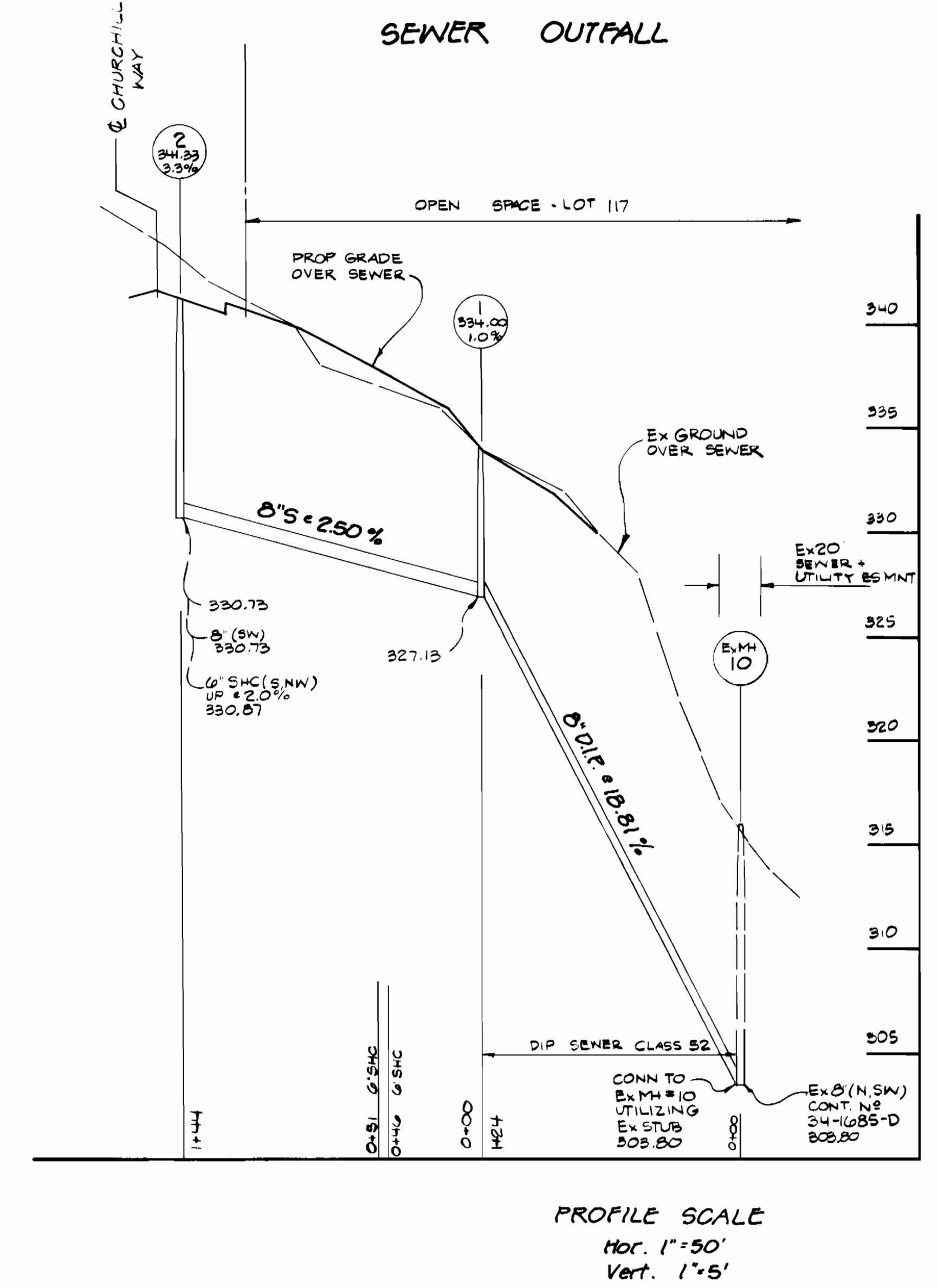
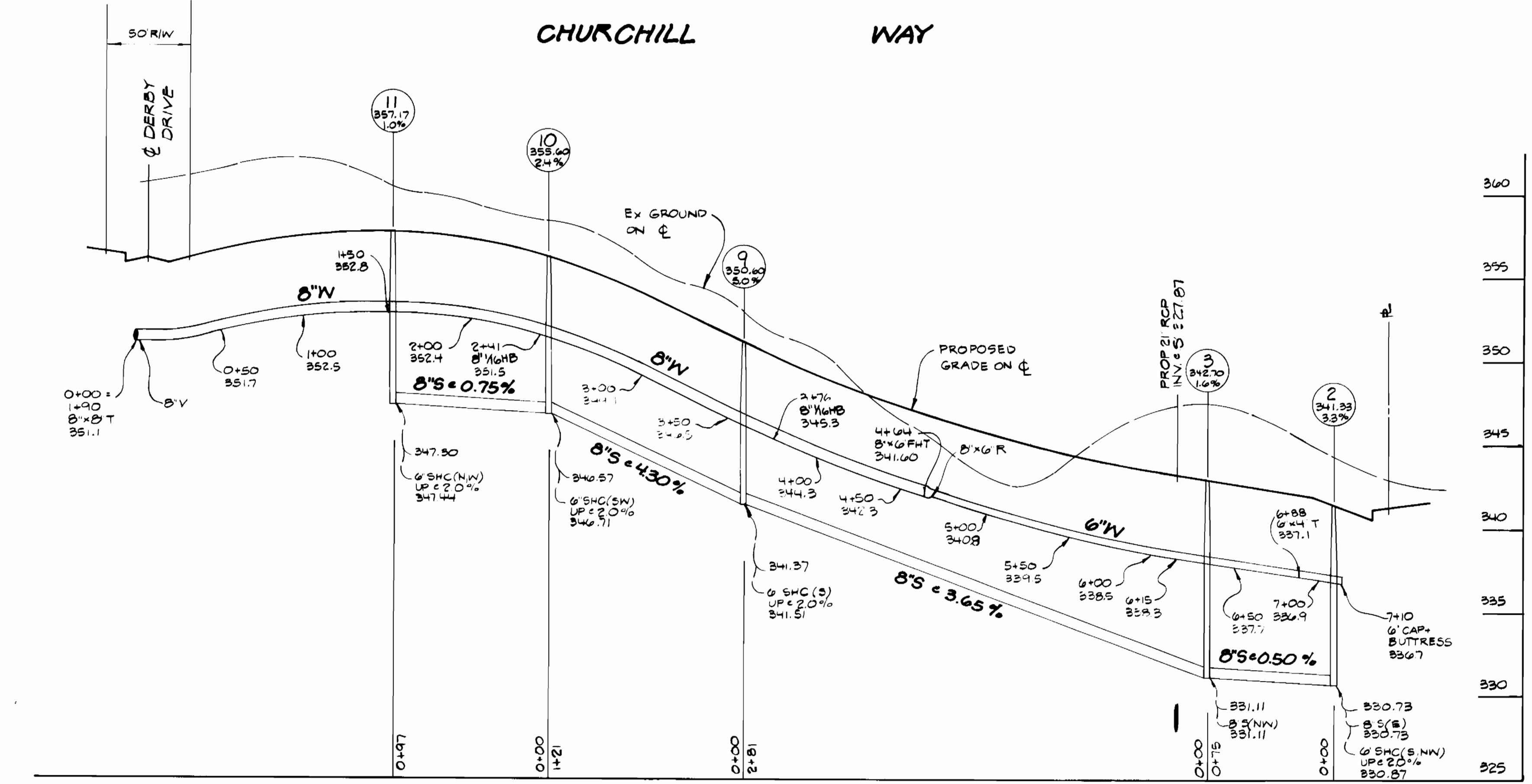
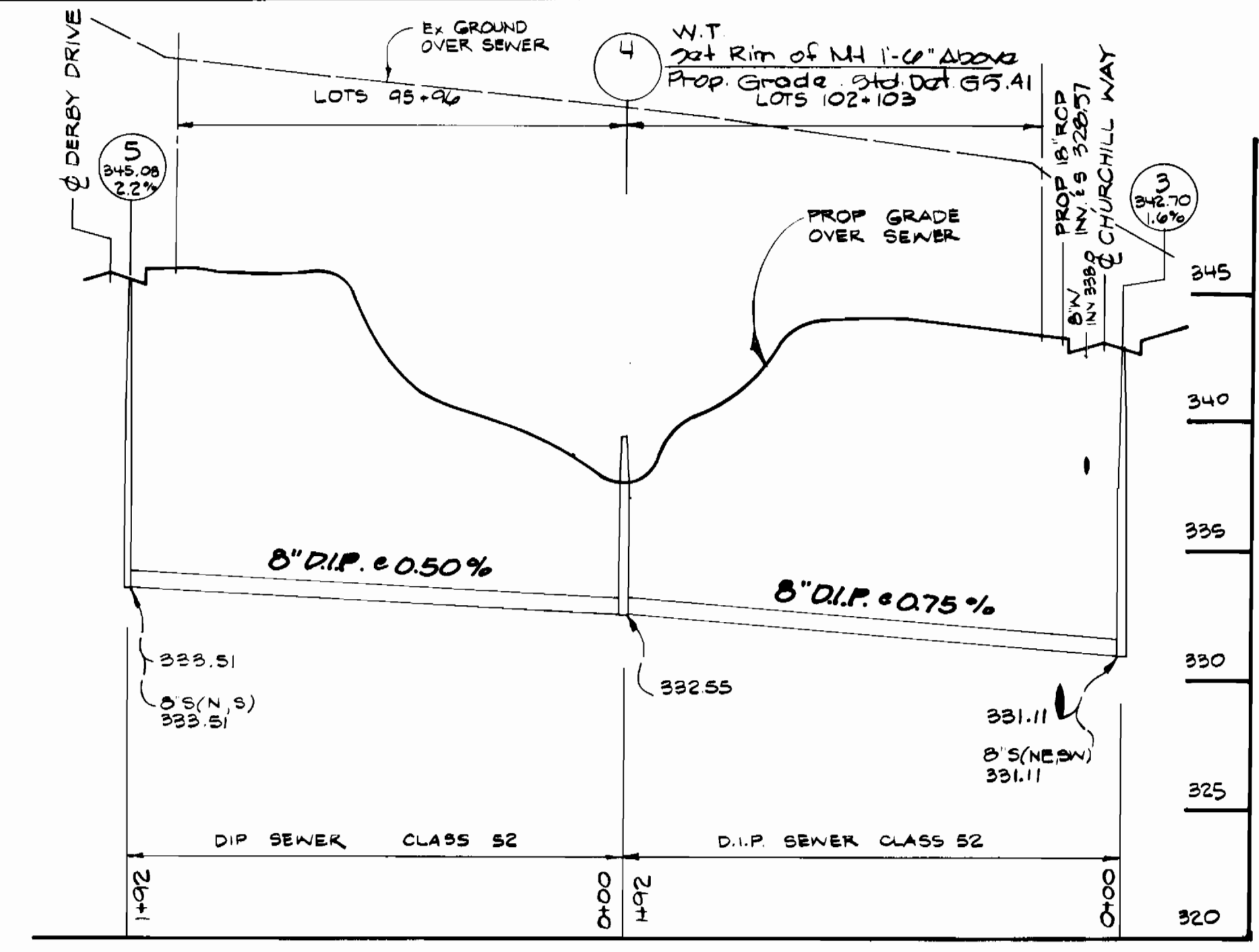
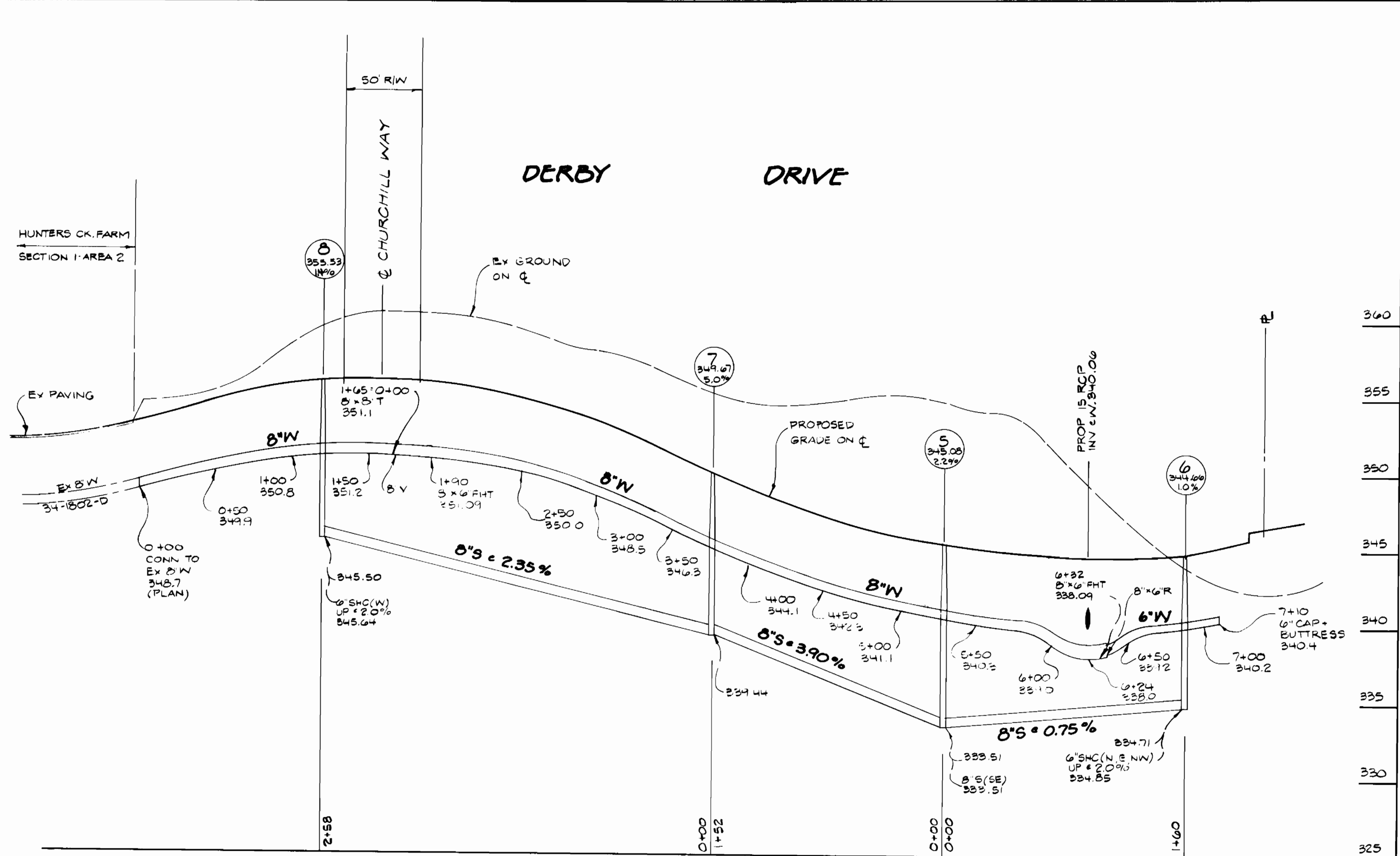
DES:	GPM				
DRN:	GPM				
CHK:	CKG				
JULY 1985	MCF 1	Change W44 to W.T. 5' at Rim 1'-6" above Grade 2/20			
DATE:	BY NO.	REVISION	DATE	600' SCALE MAP NO. 42	BLOK NO. 19

**WATER + SEWER MAINS PLAN**

HUNTERS CREEK FARM  
SECTION 1 AREA 3  
LOTS 82 THRU 118  
6<sup>TH</sup> ELECTION DISTRICT  
CONTRACT NO. 34-1867-D

SCALE AS SHOWN  
SHEET 2 OF 3





PROFILE SCALE  
Hor. 1"=50'  
Vert. 1"=5'

DEPARTMENT OF PUBLIC WORKS  
HOWARD COUNTY, MARYLAND

James H. [Signature] 12/14/83  
DIRECTOR OF PUBLIC WORKS DATE

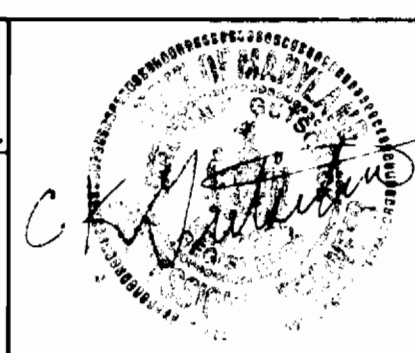
Richard Benjamin 12-14-83  
CHIEF, BUREAU OF UTILITIES DATE

[Signature] 12/24/83  
CHIEF, BUREAU OF ENGINEERING DATE

[Signature] 12/24/83  
CHIEF, LAND DEVELOPMENT DIV. DATE

**GLW** GUTSCHICK LITTLE & WEBER, P.A.  
ENGINEERS, PLANNERS, SURVEYORS

3908 NATIONAL DRIVE, SUITE 250 BIRMGHAMVILLE OFFICE PARK  
BIRMGHAMVILLE, MD 20886  
(301) 421-4024



DES: GPM					
DRN: GPM					
CHK: CKG	WCF 2	REVISE PROP GRADE AND M1 #4			
JULY 1983	GM	REV. 10' HB ON CHURCHILL WAY TO 116' HB AS PER PLAN VIEW	2-6-83		
DATE: 1983	BY NO.	REVISION	DATE		

WATER + SEWER MAINS  
PROFILES

600' SCALE MAP NO. 112 BLOCK NO. 19

HUNTERS CREEK FARM  
SECTION 1 AREA 3  
LOTS 82 THRU 118  
6TH ELECTION DISTRICT  
CONTRACT NO. 34-1867-D

SCALE AS SHOWN

SHEET 2 OF 3