

PLAN  
SCALE: 1"=50'

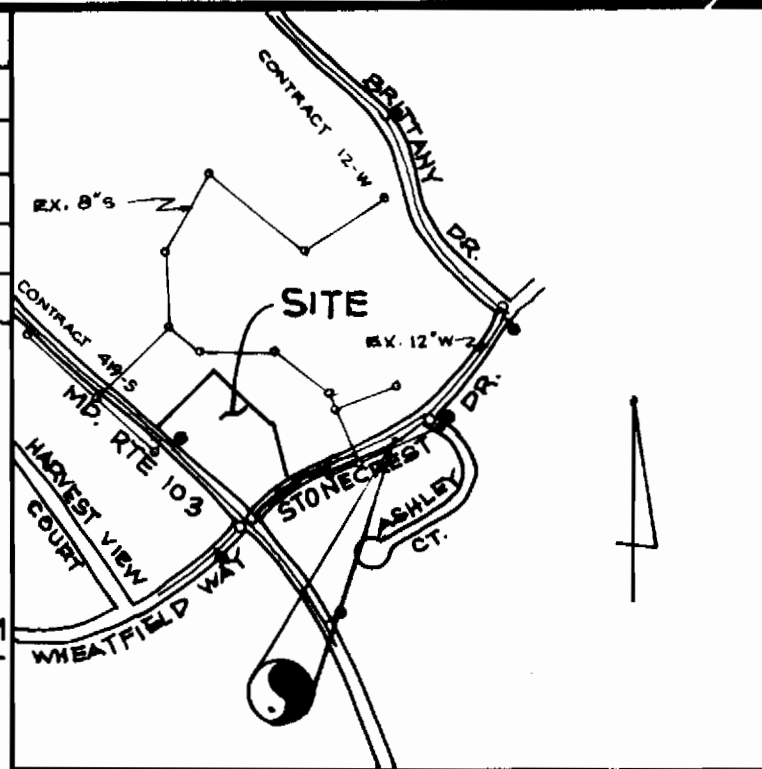
- \*NOTE
1. CONSTRUCT SEWER CONNECTION TO LOT 1
  2. ABANDON THE SEPTIC TANK
  3. EXISTING WHC TO BE ABANDONED AT THE MAIN, WITH A PLUG INSERTED. (FROM LOT 2)

QUANTITIES			
ITEM	EST'D	AS BUILT	MATERIAL/SUPPLIER
8" S	214 L.F.	214 L.F.	AMERICAN
1" WHC	90 L.F.	140 L.F.	CAMBRIDGE ICE
6" SHC	35 L.F.	59 L.F.	AMERICAN
4'-0" S.M.H	3 EA.	3 EA.	ATLANTIC PRECAST
METER VAULT	2 EA.	2 EA.	FORD

TYPE OF BUILDING RESIDENTIAL  
 NO. OF LOTS 4  
 NO. OF WATER HOUSE CONN. 4  
 NO. OF SEWER HOUSE CONN. 4  
 DRAINAGE AREA LITTLE PATUXENT

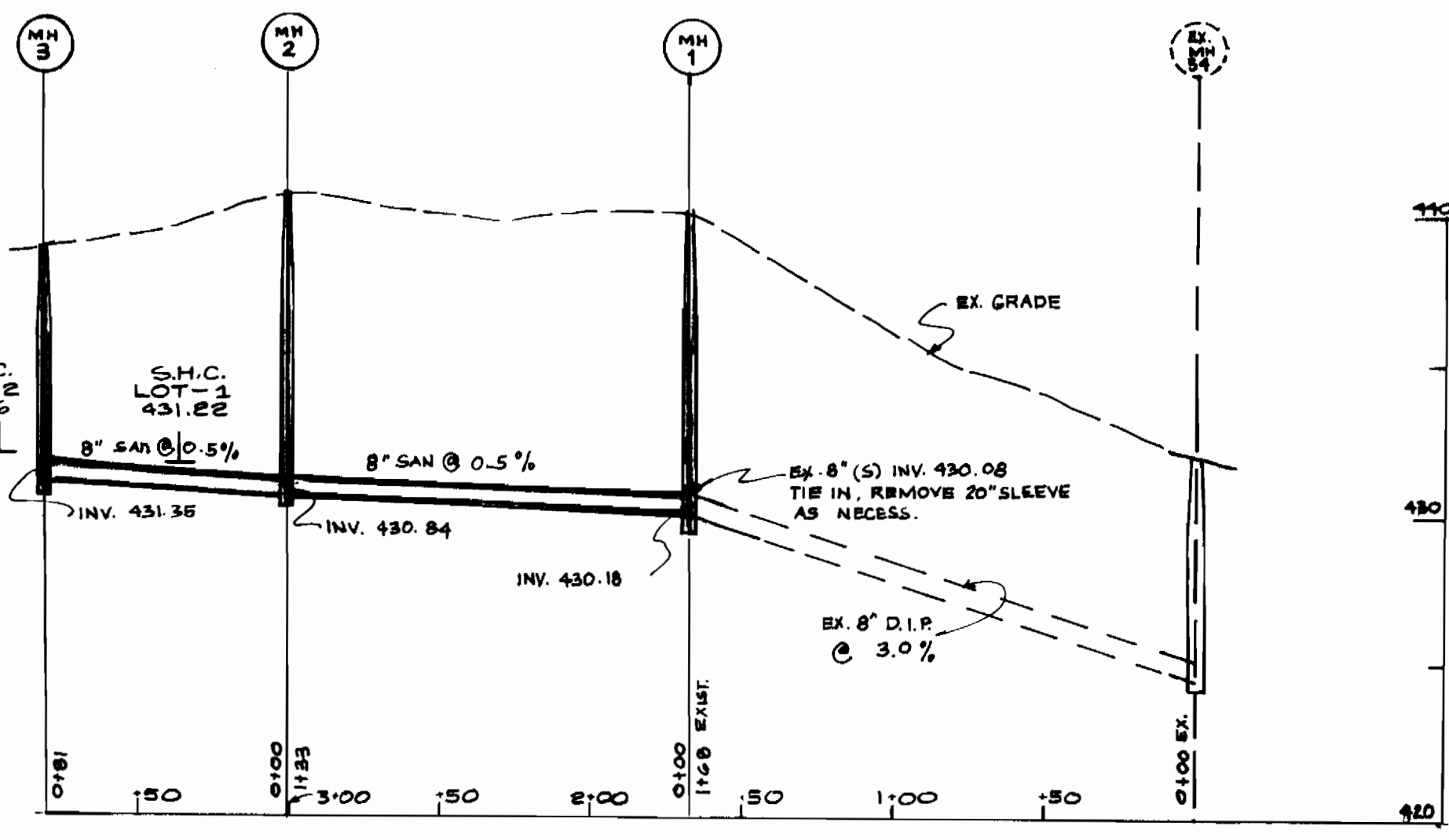
WATER AND SEWER CODE:  
 FOR COUNTY USE ONLY  
 WATER NO. F-16  
 SEWER NO. 5750636

BENCH MARK:  
 R.K. NAIL IN STONECREST DR.,  
 0.3 FT. FROM SOUTH SIDE  
 EDGE OF ROAD, 30 FT. FROM  
 WEST END OF 15" CMP, 40 FT  
 FROM EAST END OF 15" CMP

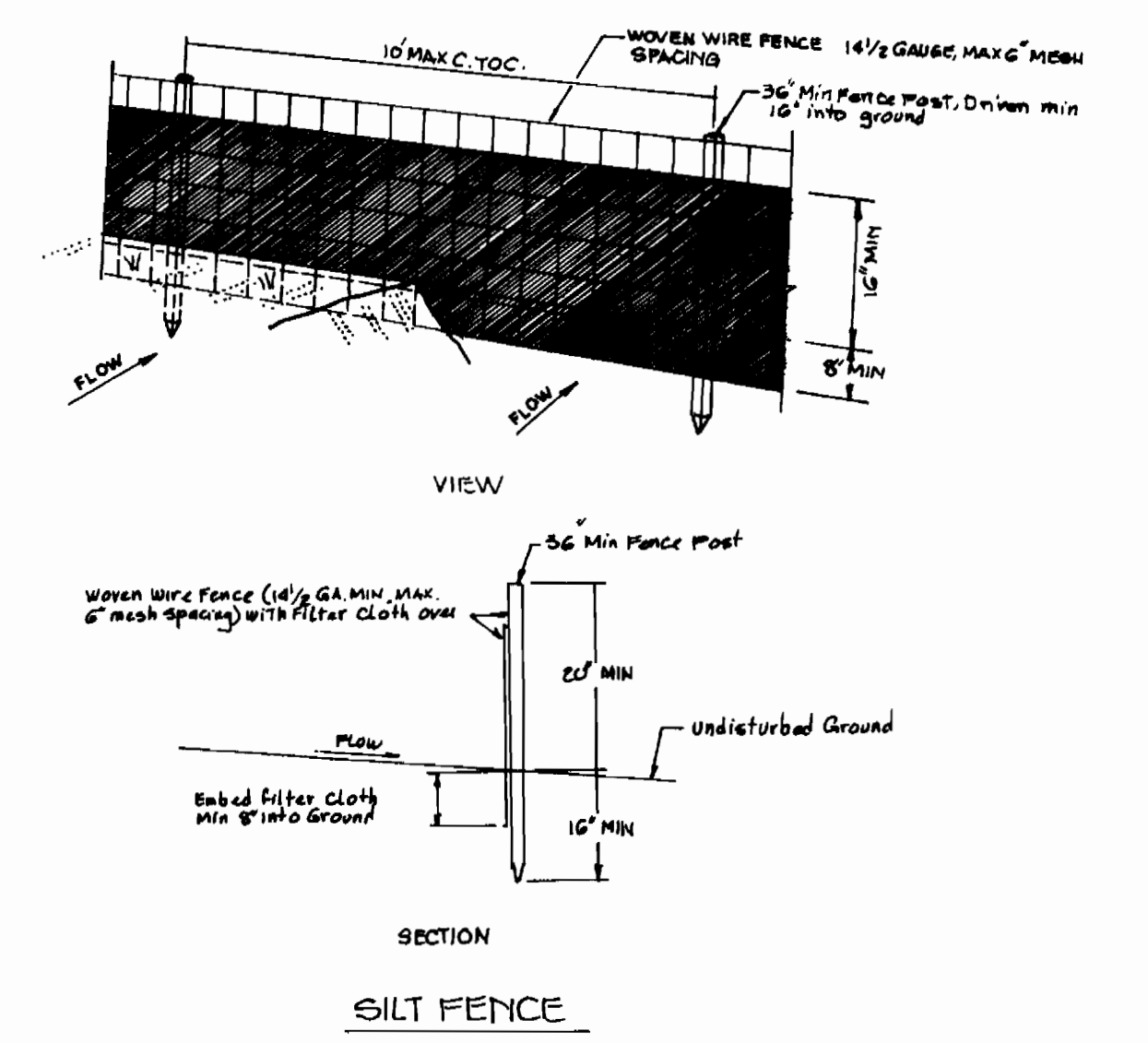


GENERAL NOTES

1. APPROXIMATE LOCATION OF EXISTING MAINS ARE SHOWN. THE CONTRACTOR SHALL TAKE ALL NECESSARY PRECAUTIONS TO PROTECT EXISTING MAINS AND SERVICES AND MAINTAIN UNINTERRUPTED SUPPLY. ANY DAMAGE INCURRED SHALL BE REPAIRED IMMEDIATELY TO THE SATISFACTION OF THE ENGINEER AT THE CONTRACTOR'S EXPENSE.
2. ALL HORIZONTAL CONTROLS ARE BASED ON MARYLAND STATE COORDINATES.
3. ALL VERTICAL CONTROLS ARE BASED ON U.S.G.S DATA.
4. ALL PIPE ELEVATIONS SHOWN ARE INVERT ELEVATIONS.
5. CLEAR ALL UTILITIES BY A MINIMUM OF 6" BELOW THE PROPOSED GRADE.
6. FOR DETAILS NOT SHOWN ON THE DRAWINGS AND FOR MATERIALS AND CONSTRUCTION METHODS, USE HOWARD COUNTY DESIGN MANUAL, VOLUME II. STANDARD SPECIFICATIONS AND DETAILS FOR CONSTRUCTION. THE CONTRACTOR SHALL HAVE A COPY OF VOLUME II ON THE JOB.
7. WHERE TEST PITS HAVE BEEN MADE ON EXISTING UTILITIES, THEY ARE NOTED BY THE SYMBOL (M) AT THE LOCATION OF THE TEST PIT. A NOTE OR NOTES CONTAINING THE RESULTS OF THE TEST PIT OR PITS IS INCLUDED ON THE DRAWINGS. EXISTING UTILITIES IN VICINITY OF THE PROPOSED WORK FOR WHICH TEST PITS HAVE NOT BEEN DUG SHALL BE VERIFIED BY THE CONTRACTOR TO HIS OWN SATISFACTION. ANY DAMAGE TO EXISTING FACILITIES DUE TO THE CONTRACTOR'S NEGLIGENCE SHALL BE REPAIRED AT THE CONTRACTOR'S EXPENSE.
8. CONTRACTOR SHALL NOTIFY THE FOLLOWING UTILITIES OR AGENCIES AT LEAST FIVE WORKING DAYS BEFORE STARTING WORK SHOWN ON THESE PLANS:
  - STATE HIGHWAY ADMINISTRATION: 531-5533
  - BALTIMORE GAS & ELECTRIC CO. - CONTRACTOR SERVICES: 561-2585
  - BALTIMORE GAS & ELECTRIC CO. - UNDERGROUND DAMAGE CONTROL: 234-5621
  - BALTIMORE GAS & ELECTRIC CO. - TROUBLE SHOOTING: 298-9013
  - MISS UTILITY: 1-559-0100
  - COLONIAL PIPELINE COMPANY: 795-1390
  - BUREAU OF UTILITIES, HOWARD COUNTY DEPARTMENT OF PUBLIC WORKS: 992-2366
9. TREES AND SHRUBS ARE TO BE PROTECTED FROM DAMAGE TO MAXIMUM EXTENT. TREES AND SHRUBS LOCATED WITHIN THE CONSTRUCTION STRIP ARE NOT TO BE REMOVED OR DAMAGED BY THE CONTRACTOR.
10. CONTRACTOR SHALL REMOVE TREES, STUMPS AND ROOTS ALONG LINE OF EXCAVATION. PAYMENT FOR SUCH REMOVAL SHALL BE INCLUDED IN THE UNIT PRICE BID FOR CONSTRUCTION OF THE MAIN.
11. ALL SEWER MAINS SHALL BE C.S.P.X., R.C.S.P., V.C.X.R., A.C.P. CLASS 2400 OR P.V.C. UNLESS OTHERWISE NOTED.
12. THE CONTRACTOR SHALL PROVIDE A JOINT IN ALL SEWER MAINS WITHIN 2'-0" OF EXTERIOR MANHOLE WALL.
13. ALL MANHOLES SHALL BE 4'-0" INSIDE DIAMETER UNLESS OTHERWISE NOTED.
14. MANHOLES SHOWN SHALL BE 12" x 16" WALLS ARE FOR BRICK MANHOLES ONLY.
15. MANHOLES LOCATED WITHIN PROPOSED ROADWAY SHALL HAVE STANDARD HEAVY TRAFFIC MANHOLE FRAME AND COVER, STANDARD DETAIL, SB-51.
16. ALL DIP FITTINGS SHALL BE IN ACCORDANCE WITH AWWA SPECIFICATION C-153 DUCTILE IRON COMPACT FITTING, 3" THROUGH 12" FOR WATER AND OTHER LIQUIDS.



PROFILE  
 HORIZ.: 1"=50'  
 VERT.: 1"=5'



SECTION  
 SILT FENCE

SEDIMENT CONTROL MEASURES FROM THIS CONTRACT WILL BE IMPLEMENTED IN ACCORDANCE WITH ARTICLE 15 OF THE SPECIFICATIONS AND AS SHOWN ON F-89-03

HOWARD SOIL CONSERVATION DISTRICT REVIEWED FOR HOWARD SOIL CONSERVATION DISTRICT AND MEETS TECHNICAL REQUIREMENTS

*Jane M. Helm* 12-5-88 DATE  
 SOIL CONSERVATION SERVICE

THIS PLAN IS APPROVED FOR SOIL EROSION AND SEDIMENT CONTROL BY THE HOWARD SOIL CONSERVATION DISTRICT

*Stephen L. Helm* 12-5-88 DATE  
 HOWARD SOIL CONSERVATION DISTRICT



DEPARTMENT OF PUBLIC WORKS  
 HOWARD COUNTY, MARYLAND

*James M. Helm* 12-6-88 DATE  
 DIRECTOR OF PUBLIC WORKS

*John A. Sedghi* 12-1-88 DATE  
 CHIEF BUREAU OF ENGINEERING

*John A. Sedghi* 12-1-88 DATE  
 CHIEF LAND DEVELOPMENT DIVISION

LORIA, SEDGHI & ASSOCIATES, LTD.  
 3217 Corporate Court  
 Ellicott City, MD, 21043  
 (301) 750-9005

PRELIMINARY  
 WATER & SEWER

CONTRACT NO. 24-1861-D  
 STONECREST VILLA  
 1ST ELECTION DISTRICT  
 HOWARD COUNTY, MARYLAND

SCALE  
 AS SHOWN  
 SHEET  
 1 OF 1