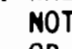
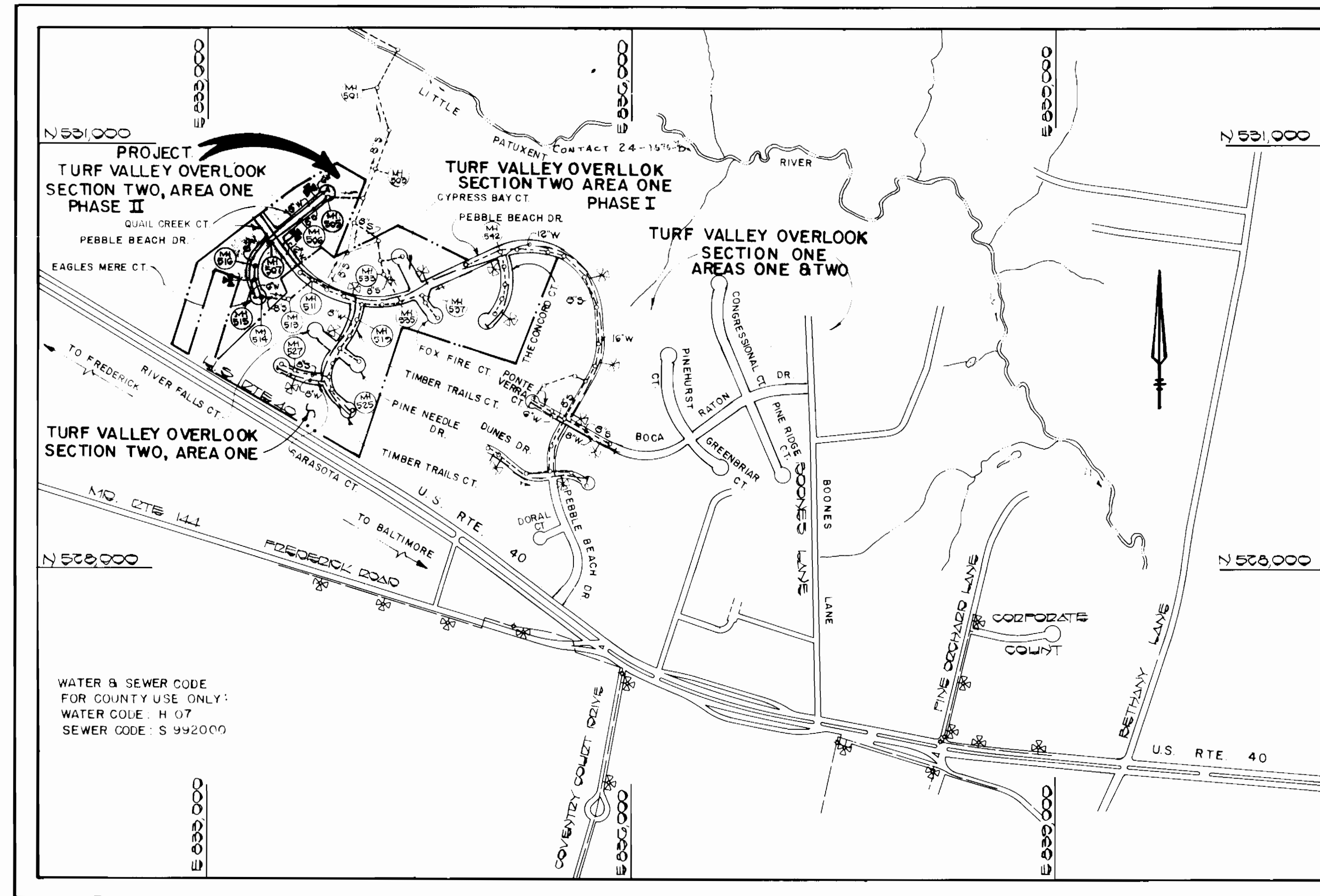


GENERAL NOTES

- APPROXIMATE LOCATION OF EXISTING MAINS ARE SHOWN. THE CONTRACTOR SHALL TAKE ALL NECESSARY PRECAUTIONS TO PROTECT EXISTING MAINS AND SERVICES AND MAINTAIN UNINTERRUPTED SUPPLY. ANY DAMAGE INCURRED SHALL BE REPAIRED IMMEDIATELY TO THE SATISFACTION OF THE ENGINEER AT THE CONTRACTOR'S EXPENSE.
- ALL HORIZONTAL CONTROLS ARE BASED ON MARYLAND STATE COORDINATES.
- ALL VERTICAL CONTROLS ARE BASED ON U.S.G.S. DATUM
- ALL PIPE ELEVATIONS SHOWN ARE INVERT ELEVATIONS.
- CLEAR ALL UTILITIES BY A MINIMUM OF 6".
- FOR DETAILS NOT SHOWN ON THE DRAWINGS, AND FOR MATERIALS AND CONSTRUCTION METHODS, USE HOWARD COUNTY DESIGN MANUAL, VOLUME IV, STANDARD SPECIFICATIONS AND DETAILS FOR CONSTRUCTION. THE CONTRACTOR SHALL HAVE A COPY OF VOLUME IV ON THE JOB.
- WHERE TEST PITS HAVE BEEN MADE ON EXISTING UTILITIES, THEY ARE NOTED BY THE SYMBOL  AT THE LOCATION OF THE TEST PIT. A NOTE OR NOTES CONTAINING THE RESULTS OF THE TEST PIT OR PITS IS INCLUDED ON THE DRAWINGS. EXISTING UTILITIES IN THE VICINITY OF THE PROPOSED WORK FOR WHICH TEST PITS HAVE NOT BEEN DUG SHALL BE VERIFIED BY THE CONTRACTOR TO HIS OWN SATISFACTION. ANY DAMAGE TO EXISTING FACILITIES DUE TO THE CONTRACTOR'S NEGLIGENCE SHALL BE REPAIRED AT THE CONTRACTOR'S EXPENSE.
- CONTRACTOR SHALL NOTIFY THE FOLLOWING UTILITIES OR AGENCIES AT LEAST FIVE WORKING DAYS BEFORE STARTING WORK SHOWN ON THESE PLANS:
 - STATE HIGHWAY ADMINISTRATION : 531-5533
 - BALTIMORE GAS & ELECTRIC CO.-CONTRACTOR SERVICES: 850-4620
 - BALTIMORE GAS & ELECTRIC CO. UNDERGROUND DAMAGE CONTROL: 859-9004
 - BALTIMORE GAS & ELECTRIC CO. TROUBLE SHOOTING: 298-9013
 - MISS UTILITY: 1-559-0100
 - COLONIAL PIPELINE COMPANY: 795-1390
 - BUREAU OF UTILITIES, HOWARD COUNTY DEPARTMENT OF PUBLIC WORKS 992-2366
 - C&P TELEPHONE COMPANY: 1-800-257-7777
- TREES AND SHRUBS ARE TO BE PROTECTED FROM DAMAGE TO MAXIMUM EXTENT. TREES AND SHRUBS LOCATED WITHIN THE CONSTRUCTION STRIP ARE NOT TO BE REMOVED OR DAMAGED BY THE CONTRACTOR.
- CONTRACTOR SHALL REMOVE TREES, STUMPS AND ROOTS ALONG LINE OF EXCAVATION. PAYMENT FOR SUCH REMOVAL SHALL BE INCLUDED IN THE UNIT PRICE BID FOR CONSTRUCTION OF THE MAIN.
- ALL WATER MAINS TO BE D.I.P. CLASS 52 UNLESS OTHERWISE NOTED.
- TOPS OF ALL WATER MAINS TO HAVE A MINIMUM OF 3-1/2' COVER UNLESS OTHERWISE NOTED.
- VALVES ADJACENT TO TEES SHALL BE STRAPPED TO TEES.
- ALL FITTINGS SHALL BE BUTTRESSED OR ANCHORED WITH CONCRETE IN ACCORDANCE WITH THE STANDARD DETAILS UNLESS OTHERWISE PROVIDED FOR ON THE DRAWINGS.
- FIRE HYDRANTS SHALL BE SET TO THE BURY LINE ELEVATIONS SHOWN ON THE DRAWINGS. ALL FIRE HYDRANTS SHALL BE STRAPPED AND BUTTRESSED WITH CONCRETE IN ACCORDANCE WITH STANDARD DETAILS. SOIL AROUND THE FIRE HYDRANT SHALL BE COMPACTED IN ACCORDANCE WITH SECTION 1003 AND 1008 OF THE STANDARD SPECIFICATIONS.
- THE CONTRACTOR SHALL NOT OPERATE ANY WATER MAIN VALVES ON THE EXISTING WATER SYSTEM.
- ALL WATER HOUSE CONNECTIONS SHALL BE FOR INSIDE METER SETTING, UNLESS OTHERWISE NOTED ON THE PLANS OR IN THE SPECIFICATIONS. (STD. DETAIL W.3.21).
- WATER MAINS AND WATER HOUSE CONNECTION LINES MUST BE PLACED SO AS TO HAVE AT LEAST ONE (1) FOOT SEPARATION FROM THE SEWER MAIN OR SEWER HOUSE CONNECTION AS THEY PASS ABOUT IT.
- MANHOLES DESIGNATED W.T. IN PLAN AND PROFILE SHALL HAVE WATER-TIGHT FRAME AND COVERS STANDARD DETAIL G5.52 WHERE WATERTIGHT MANHOLE FRAME AND COVER IS USED, SET TOP OF FRAME 1'-6" ABOVE FINISHED GRADE UNLESS OTHERWISE NOTED ON THE DRAWINGS.
- ALL SEWER MAINS SHALL BE C.S.P.X., R.C.S.P., V.C.P.X., A.C.P. CLASS 2400 OR P.V.C. UNLESS OTHERWISE NOTED.
- THE CONTRACTOR SHALL PROVIDE A JOINT IN ALL SEWER MAINS WITHIN 2'-0" OF EXTERIOR MANHOLE WALL.
- ALL MANHOLES SHALL BE 4'-0" INSIDE DIAMETER UNLESS OTHERWISE NOTED.
- MANHOLES SHOWN WITH 12" AND 16" WALLS ARE FOR BRICK MANHOLES ONLY.
- MANHOLES LOCATED WITHIN PROPOSED ROADWAY SHALL HAVE STANDARD HEAVY TRAFFIC MANHOLE FRAME AND COVER, STANDARD DETAIL G5.51.
- ALL D.I.P. FITTINGS SHALL BE IN ACCORDANCE WITH AWWA SPECIFICATION C-153: DUCTILE IRON COMPACT FITTINGS, 3-INCH THROUGH 12-INCH FOR WATER & OTHER LIQUIDS.



TYPE OF BUILDING	RESIDENTIAL
NUMBER OF LOTS	29 (27 BUILDABLE)
NO. OF WATER HOUSE CONNECTIONS	27
NO. OF SEWER HOUSE CONNECTIONS	22
DRAINAGE AREA	LITTLE PATUXENT

VICINITY MAP
SCALE: 1"=600'

TREATMENT PLANT: PATAPSCO WASTEWATER TREATMENT PLANT VIA THE ROUTE 108 PUMPING STATION

CONTRACT NO. 24-1860-D

TURF VALLEY OVERLOOK

SECTION 2 AREA 1-PHASE II

WATER AND SEWER MAIN EXTENSIONS

HOWARD COUNTY, MARYLAND

DEPARTMENT OF PUBLIC WORKS

QUANTITIES			
ITEM	ESTIM	AS BUILT	SUPPLIED
8" SEWER	305 LF		
6" SHC	573 LF		
MANHOLES	5 CA		
12" WATER	344 LF		
8" WATER	748 LF		
6" WATER	344 LF		
4" WATER	45 LF		
FM 1/2 VALVE	3 CA		
1" WHC	228 LF		
3/4" WHC	344 LF		
BLOW OFFS	0 CA		
12" VALVES	1 CA		
8" VALVES	3 CA		
8x6 REDUCERS	2 CA		

SEDIMENT CONTROL MEASURES FOR THIS CONTRACT WILL BE IMPLEMENTED IN ACCORDANCE WITH SECTION 2.10 OF THE HOWARD COUNTY DESIGN MANUAL AND STANDARDS AND SPECIFICATIONS FOR SOIL EROSION AND SEDIMENT CONTROL IN DEVELOPING AREAS AND ALSO AS SHOWN ON THE GRADING AND SEDIMENT CONTROL PLAN F88-33

REVIEWED FOR HOWARD COUNTY SOIL CONSERVATION DISTRICT AND MEETS TECHNICAL REQUIREMENTS.

[Signature] 10/6/88
US SOIL CONSERVATION SERVICE DATE

PLAN REFERENCE NUMBERS
P 87-29 F-88-33

THIS DEVELOPMENT PLAN IS APPROVED FOR EROSION AND SEDIMENT CONTROL BY HOWARD SOIL CONSERVATION DISTRICT.

APPROVED:
[Signature] 10/6/88
HOWARD SOIL CONSERVATION DISTRICT DATE

DEPARTMENT OF PUBLIC WORKS HOWARD COUNTY, MARYLAND	
<i>[Signature]</i> 10/6/88 DIRECTOR OF PUBLIC WORKS DATE	<i>[Signature]</i> 10-10-88 CHIEF, BUREAU OF ENGINEERING DATE
<i>[Signature]</i> 9-30-88 CHIEF, BUREAU OF UTILITIES DATE	<i>[Signature]</i> CHIEF, LAND DEVELOPMENT DIVISION DATE

FISHER, COLLINS, AND CARTER, INC. CONSULTING ENGINEERS AND LAND SURVEYORS 8388 COURT AVENUE ELLICOTT CITY, MARYLAND 21043
--

9757
<i>[Signature]</i> TERRELL A. FISHER

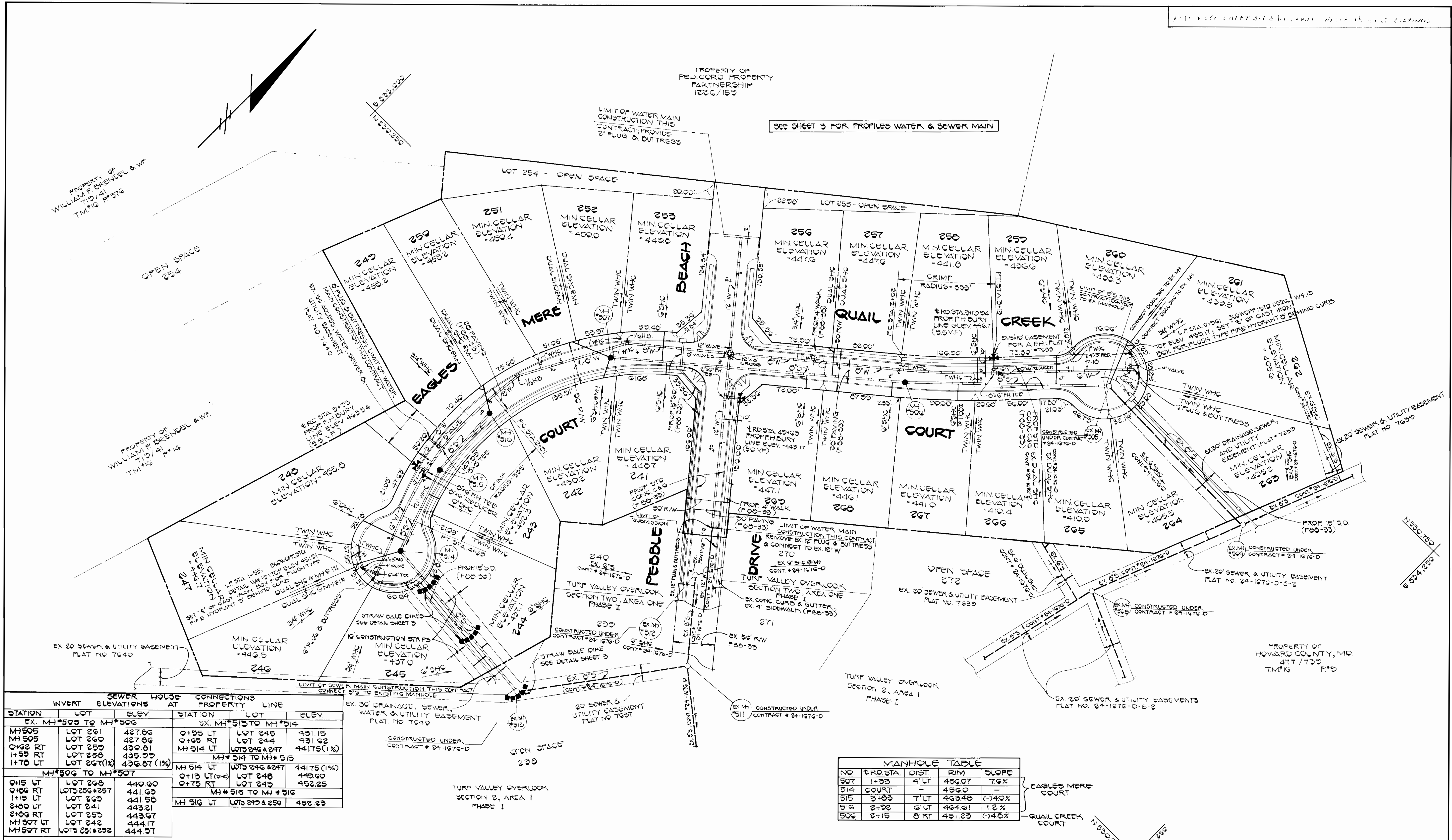
DES. PWK				
SB				
DRN. GW				
CHK. PWK				
DATE 9-20-88	BY	NO	REVISION	DATE

TITLE SHEET
600 SCALE MAP NO. 17 BLOCK NO.

TURF VALLEY OVERLOOK SECTION TWO AREA ONE-PHASE II CONTRACT NO. 24-1860-D SECOND ELECTION DISTRICT HOWARD COUNTY, MARYLAND
--

SCALE AS SHOWN
SHEET 1 OF 3

CONTRACT NO. 24-1860-D
TURF VALLEY OVERLOOK
SECTION TWO AREA ONE-PHASE II
WATER AND SEWER EXTENSIONS
HOWARD COUNTY, MARYLAND



SEWER HOUSE CONNECTIONS			CONNECTIONS		
STATION	INVERT ELEVATION	PROPERTY AT	STATION	LOT	ELEV.
EX. MH#505 TO MH#506			EX. MH#513 TO MH#514		
MH505	LOT 261	427.06	0+55 LT	LOT 245	431.15
MH505	LOT 260	427.06	0+65 RT	LOT 244	431.62
0+62 RT	LOT 259	430.61	MH 514 LT	LOTS 246 & 247	441.75 (1%)
1+55 RT	LOT 258	435.55	MH#514 TO MH#515		
1+70 LT	LOT 257(1%)	436.67 (1%)	MH 514 LT	LOTS 246 & 247	441.75 (1%)
MH#506 TO MH#507			0+13 LT(0%)	LOT 248	449.60
0+06 RT	LOT 268	440.60	0+75 RT	LOT 243	452.25
1+15 LT	LOTS 256 & 257	441.63	MH#515 TO MH#516		
2+00 LT	LOT 263	441.58	MH 516 LT	LOTS 249 & 250	452.23
2+06 RT	LOT 261	443.21			
MH 507 LT	LOT 253	443.67			
MH 507 RT	LOT 242	444.17			
MH 507 RT	LOTS 251 & 252	444.57			

MANHOLE TABLE				
NO.	ERD STA.	DIST.	RIM	SLOPE
507	1+33	4' LT	456.07	7.6%
514	COURT		456.0	
515	3+33	7' LT	463.48	(-)4.0%
516	2+32	6' LT	464.61	1.2%
506	2+15	8' RT	451.23	(-)4.6%

PLAN
1"=50'

CONTRACT NO. 24-1860-D
TURF VALLEY OVERLOOK
SECTION TWO AREA ONE-PHASE II
WATER AND SEWER MAIN EXTENSIONS
HOWARD COUNTY, MARYLAND

DEPARTMENT OF PUBLIC WORKS
HOWARD COUNTY, MARYLAND

Director of Public Works: *[Signature]* DATE: 10-10-88
 Chief, Bureau of Engineering: *[Signature]* DATE: 10-10-88
 Chief, Bureau of Utilities: *[Signature]* DATE: 9-30-88
 Chief, Land Development Division: *[Signature]* DATE: 10-10-88

FISHER, COLLINS, AND CARTER, INC. #9757
CONSULTING ENGINEERS AND LAND SURVEYORS
8388 COURT AVENUE
ELLCOTT CITY, MARYLAND 21043

[Signature]
TERRELL A. FISHER

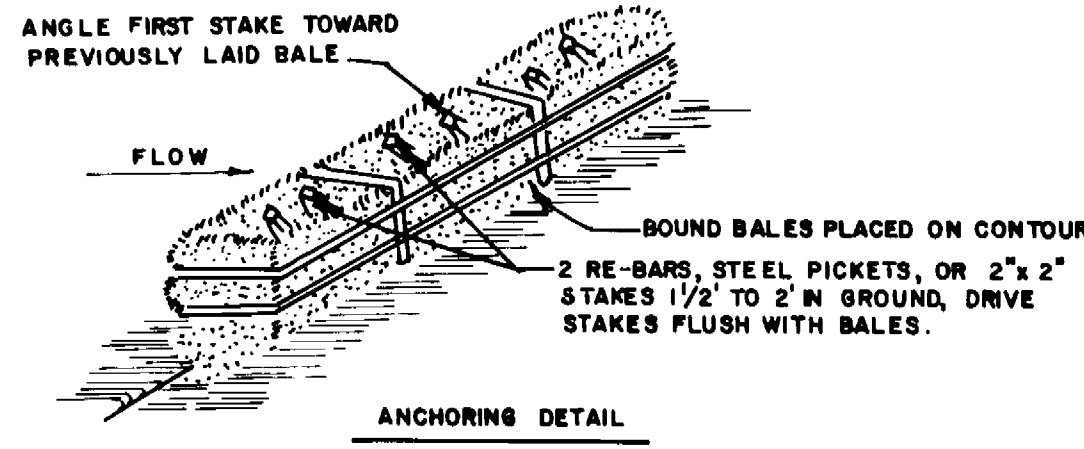
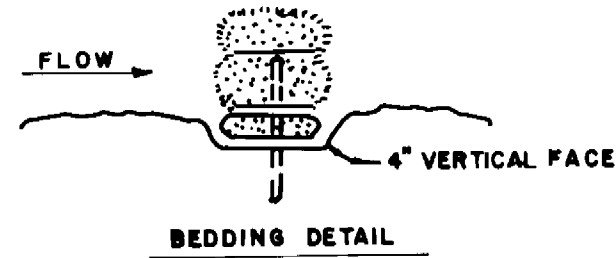
DES: P.W.K.			
DRN: G.W.			
CHK: P.W.K.			
DATE: 9-20-88	BY: NO.	REVISION	DATE

PLAN
WATER & SEWER MAINS

600' SCALE MAP NO. 17 BLOCK NO.

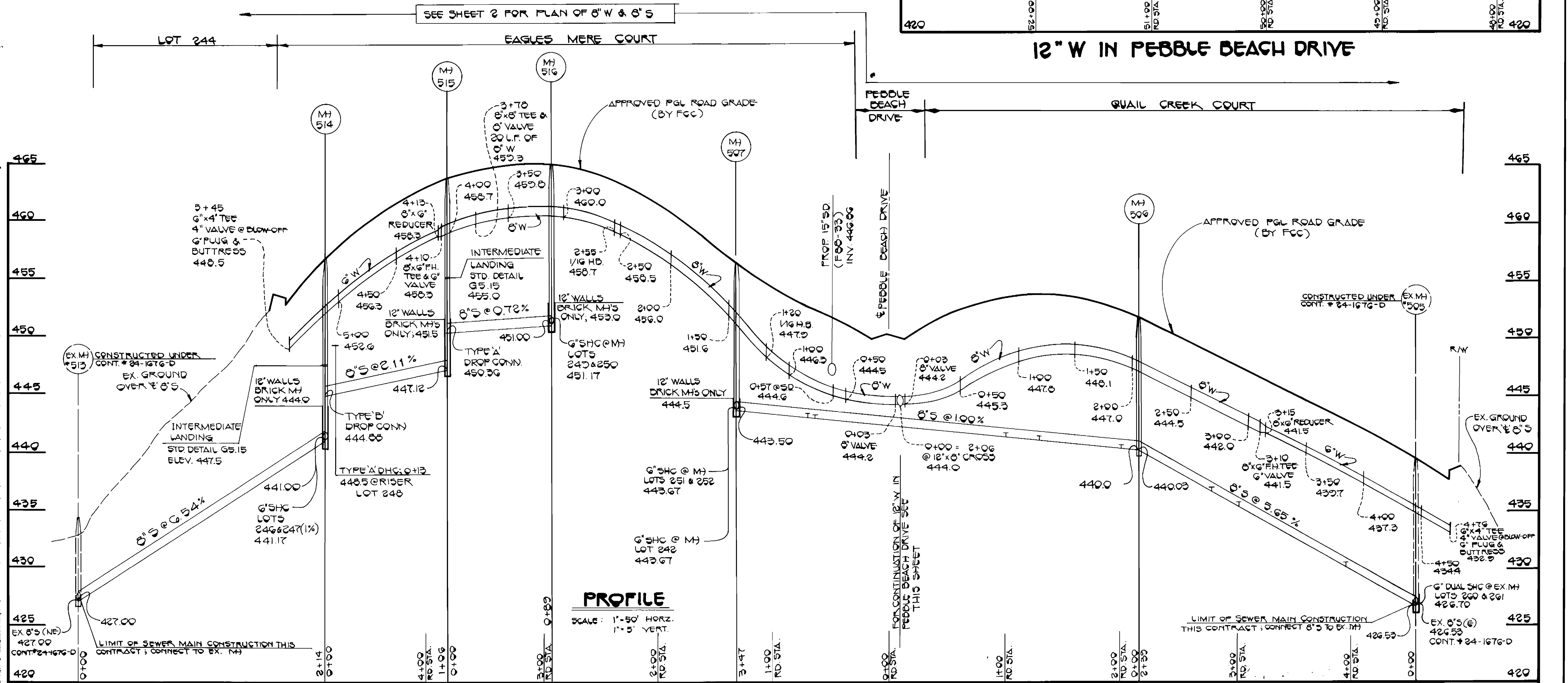
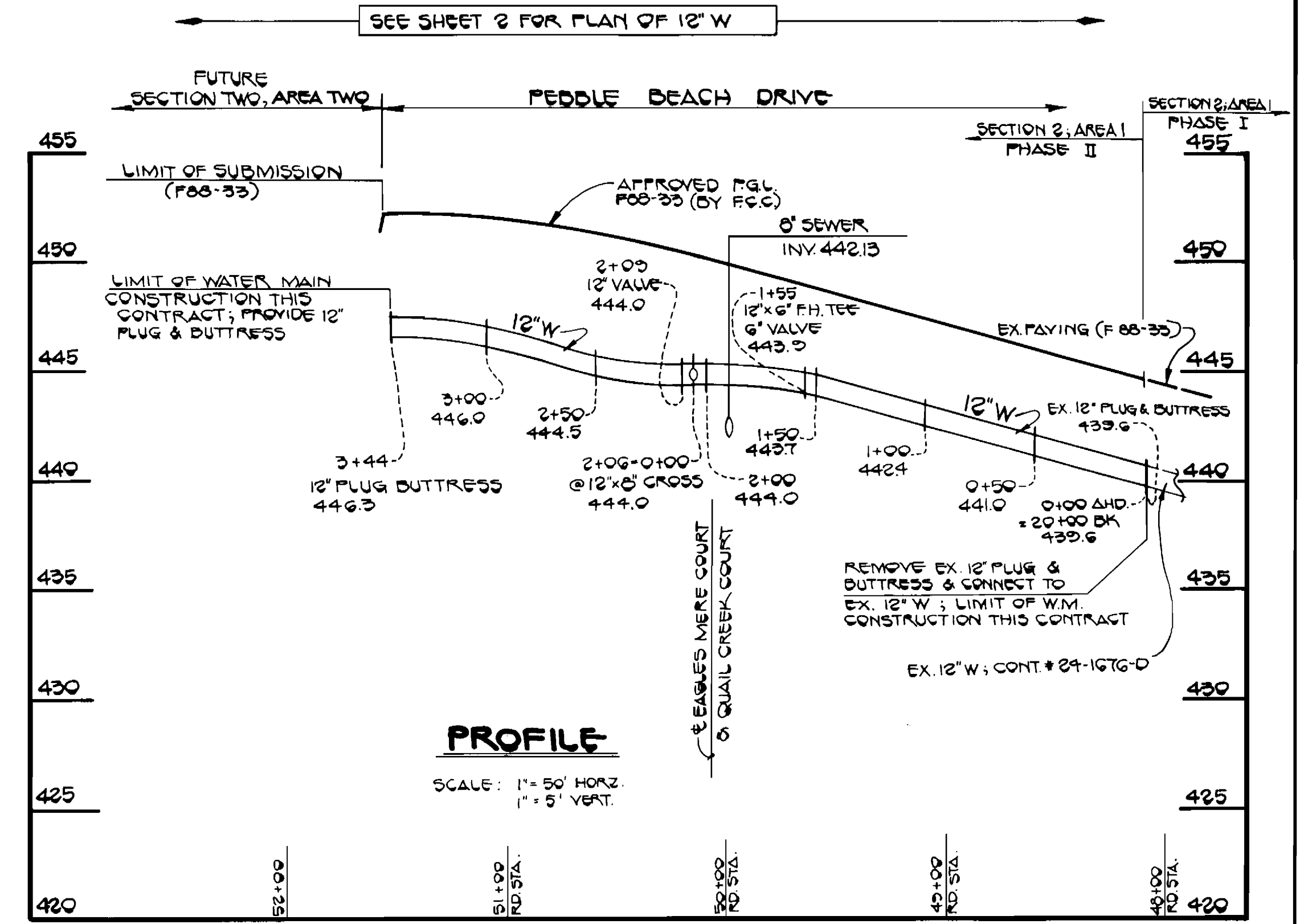
TURF VALLEY OVERLOOK
SECTION TWO AREA ONE-PHASE II
CONTRACT NO. 24-1860-D
SECOND ELECTION DISTRICT
HOWARD COUNTY, MARYLAND

SCALE AS SHOWN
SHEET 2 OF 3



STRAW BALE DIKE

1. BALES SHALL BE PLACED AT THE TOE OF A SLOPE OR ON THE CONTOUR AND IN A ROW WITH ENDS TIGHTLY ABUTTING THE ADJACENT BALES.
2. EACH BALE SHALL BE EMBEDDED IN THE SOIL A MINIMUM OF 4 INCHES, AND PLACED SO THE BINDINGS ARE HORIZONTAL.
3. BALES SHALL BE SECURELY ANCHORED IN PLACE BY EITHER TWO STAKES OR RE-BARS THROUGH THE BALE. THE FIRST STAKE IN EACH BALE SHALL BE DRIVEN TOWARD THE PREVIOUSLY LAID BALE AT AN ANGLE TO FORCE THE BALES TOGETHER. STAKES SHALL BE DRIVEN FLUSH WITH THE BALE.
4. INSPECTION SHALL BE FREQUENT AND REPAIR REPLACEMENT SHALL BE MADE PROMPTLY AS NEEDED.
5. BALES SHALL BE REMOVED WHEN THEY HAVE SERVED THEIR USEFULNESS SO AS NOT TO BLOCK OR IMPEDE STORM FLOW OR DRAINAGE.



LOT	OWNER	ADDRESS	AREA	REMARKS
101-241	WINDHOLE # 314	WINDHOLE # 314	11.0	WINDHOLE # 314
101-242	WINDHOLE # 314	WINDHOLE # 314	11.0	WINDHOLE # 314
101-243	WINDHOLE # 314	WINDHOLE # 314	11.0	WINDHOLE # 314
101-244	WINDHOLE # 314	WINDHOLE # 314	11.0	WINDHOLE # 314
101-245	WINDHOLE # 314	WINDHOLE # 314	11.0	WINDHOLE # 314
101-246	WINDHOLE # 314	WINDHOLE # 314	11.0	WINDHOLE # 314
101-247	WINDHOLE # 314	WINDHOLE # 314	11.0	WINDHOLE # 314
101-248	WINDHOLE # 314	WINDHOLE # 314	11.0	WINDHOLE # 314
101-249	WINDHOLE # 314	WINDHOLE # 314	11.0	WINDHOLE # 314
101-250	WINDHOLE # 314	WINDHOLE # 314	11.0	WINDHOLE # 314
101-251	WINDHOLE # 314	WINDHOLE # 314	11.0	WINDHOLE # 314
101-252	WINDHOLE # 314	WINDHOLE # 314	11.0	WINDHOLE # 314
101-253	WINDHOLE # 314	WINDHOLE # 314	11.0	WINDHOLE # 314
101-254	WINDHOLE # 314	WINDHOLE # 314	11.0	WINDHOLE # 314
101-255	WINDHOLE # 314	WINDHOLE # 314	11.0	WINDHOLE # 314
101-256	WINDHOLE # 314	WINDHOLE # 314	11.0	WINDHOLE # 314
101-257	WINDHOLE # 314	WINDHOLE # 314	11.0	WINDHOLE # 314
101-258	WINDHOLE # 314	WINDHOLE # 314	11.0	WINDHOLE # 314
101-259	WINDHOLE # 314	WINDHOLE # 314	11.0	WINDHOLE # 314
101-260	WINDHOLE # 314	WINDHOLE # 314	11.0	WINDHOLE # 314
101-261	WINDHOLE # 314	WINDHOLE # 314	11.0	WINDHOLE # 314
101-262	WINDHOLE # 314	WINDHOLE # 314	11.0	WINDHOLE # 314
101-263	WINDHOLE # 314	WINDHOLE # 314	11.0	WINDHOLE # 314
101-264	WINDHOLE # 314	WINDHOLE # 314	11.0	WINDHOLE # 314
101-265	WINDHOLE # 314	WINDHOLE # 314	11.0	WINDHOLE # 314
101-266	WINDHOLE # 314	WINDHOLE # 314	11.0	WINDHOLE # 314
101-267	WINDHOLE # 314	WINDHOLE # 314	11.0	WINDHOLE # 314
101-268	WINDHOLE # 314	WINDHOLE # 314	11.0	WINDHOLE # 314
101-269	WINDHOLE # 314	WINDHOLE # 314	11.0	WINDHOLE # 314
101-270	WINDHOLE # 314	WINDHOLE # 314	11.0	WINDHOLE # 314

8\"/>

DEPARTMENT OF PUBLIC WORKS
HOWARD COUNTY, MARYLAND

James M. ...
DIRECTOR OF PUBLIC WORKS
DATE: 10-10-88

...
CHIEF, BUREAU OF UTILITIES
DATE: 9-30-88

FISHER, COLLINS, AND CARTER, INC.
CONSULTING ENGINEERS AND LAND SURVEYORS
8388 COURT AVENUE
ELLICOTT CITY, MARYLAND 21043

...
CHIEF, LAND DEVELOPMENT DIVISION
DATE: 10/10/88

DES: P.W.K.					
DRN: G.W.					
CHK: P.W.K.					
DATE: 9-20-88	BY: NO.	REVISION	DATE	600 SCALE MAP NO.	BLOCK NO.

PROFILES
WATER & SEWER MAINS

TURF VALLEY OVERLOOK
SECTION TWO AREA ONE-PHASE II
CONTRACT NO. 24-1860-D
SECOND ELECTION DISTRICT
HOWARD COUNTY, MARYLAND

SCALE AS SHOWN
SHEET 3 OF 3