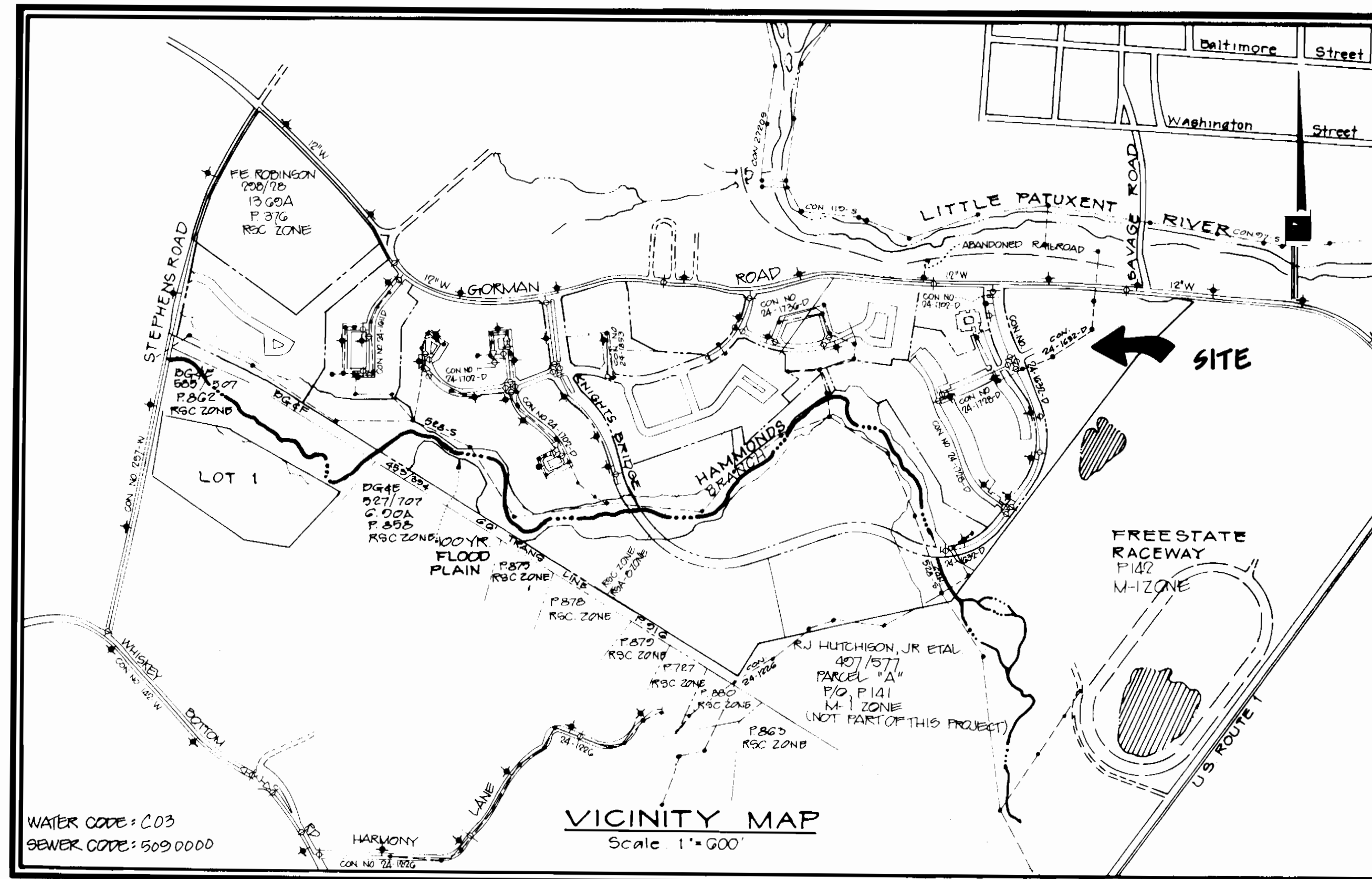


PARCEL M

BOWLING BROOK FARMS

HOWARD COUNTY, MARYLAND

QUANTITIES			
ITEM	ESTIMATED	AS BUILT	MATERIAL / SUPPLIER
8" WATER	1,412 L.F.	1,412'	ATLANTIC STATES / A.I.P. WATER SINKER
6" WATER	33 L.F.	27'	ATLANTIC STATES / A.I.P. WATER SINKER
4" WATER	140 L.F.	140'	ATLANTIC STATES / A.I.P. WATER SINKER
3" WATER	PRIVATE	200'	ATLANTIC STATES / A.I.P. WATER SINKER
8" VALVE	4 EA.	4	MUELLER COMPANY / A.I.P. WATER SINKER
6" VALVE	3 EA.	3	MUELLER COMPANY / A.I.P. WATER SINKER
FIRE HYDRANT	3 EA.	3	MUELLER COMPANY / A.I.P. WATER SINKER
AIR RELEASE MANHOLE			
BLOW OFF VALVE			
MANHOLE	1 EA.	1	ATLANTIC CONCRETE
8" SEWER	25 L.F.	25'	LAKELITE / A.I.P. WATER SINKER
6" SEWER			
4" VALVE	14 EA.	14	MUELLER COMPANY / A.I.P. WATER SINKER



TYPE OF BUILDINGS	APARTMENT
NUMBER OF LOTS	14
NUMBER OF WATER HOUSE CONNECTIONS	14
NUMBER OF SEWER HOUSE CONNECTIONS	4
DRAINAGE AREA	LITTLE PATUXENT

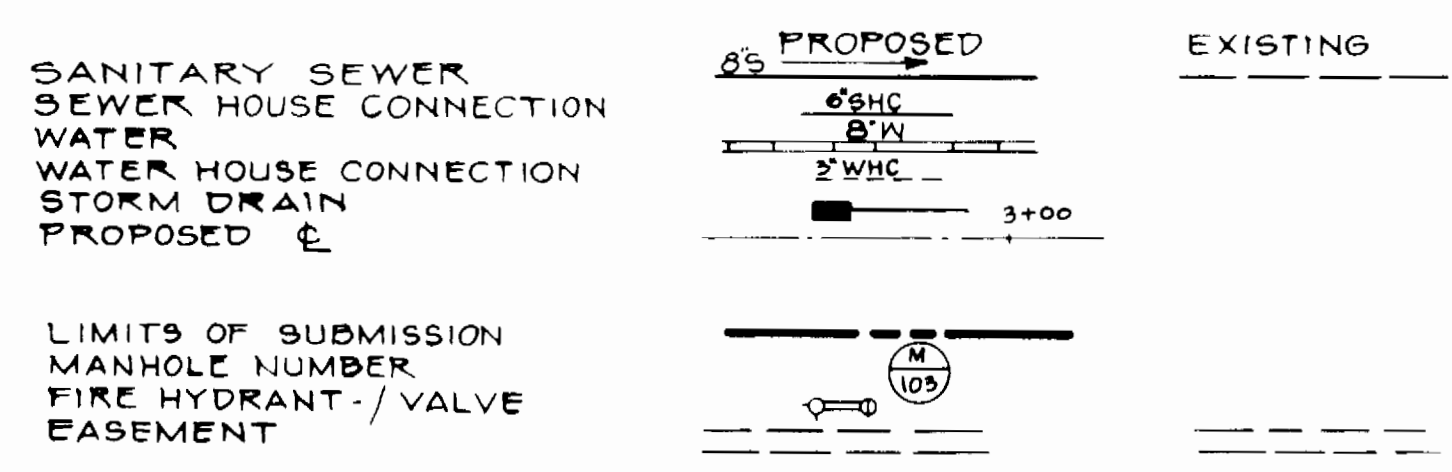
CONTRACT NO. 24-1851-D

WATER AND SEWER CONSTRUCTION PLANS

GENERAL NOTES

- THE APPROXIMATE LOCATION OF ALL UTILITIES IS SHOWN BASED ON INFORMATION OBTAINED FROM AVAILABLE RECORDS. THE CONTRACTOR SHALL LOCATE, PROTECT AND SUPPORT THE EXISTING UTILITIES AND MAINTAIN UNINTERRUPTED SERVICE. ANY DAMAGE INCURRED SHALL BE REPAIRED IMMEDIATELY TO THE SATISFACTION OF THE ENGINEER/INSPECTOR, AT THE CONTRACTOR'S EXPENSE.
- CONTRACTOR SHALL LOCATE EXISTING UTILITIES A MINIMUM OF TWO (2) WEEKS IN ADVANCE OF CONSTRUCTION OPERATIONS IN THE VICINITY OF PROPOSED UTILITIES AT HIS OWN EXPENSE.
- CONTRACTOR SHALL NOTIFY THE FOLLOWING UTILITIES OR AGENCIES AT LEAST FIVE (5) WORKING DAYS BEFORE STARTING WORK SHOWN ON THESE PLANS.
STATE HIGHWAY ADMINISTRATION - 531-5533
BALTIMORE GAS & ELECTRIC COMPANY - 561-2585 (CONTRACTOR SERVICES)
BALTIMORE GAS & ELECTRIC COMPANY - 234-6313 (UNDERGROUND DAMAGE CONTROL)
BALTIMORE GAS & ELECTRIC COMPANY - 298-9013 (TROUBLE SHOOTING)
"MISS UTILITY" 800-257-7777
CHESAPEAKE & POTOMAC (C&P) TELEPHONE COMPANY - 725-9976
BUREAU OF UTILITIES/HOWARD COUNTY - 992-2366
- ALL DETAILS NOT SHOWN ON THE DRAWINGS SHALL BE CONSTRUCTED IN ACCORDANCE WITH HOWARD COUNTY STANDARD DETAILS.
- ALL MATERIALS AND CONSTRUCTION METHODS SHALL BE IN ACCORDANCE WITH HOWARD COUNTY SPECIFICATIONS AND HOWARD COUNTY DESIGN MANUAL, VOLUME IV.
- ALL TRAFFIC CONTROL DEVICES SHALL BE IN ACCORDANCE WITH STANDARD SPECIFICATIONS FOR CONSTRUCTION AND MATERIALS, LATEST EDITION AND THE MANUAL ON UNIFORM TRAFFIC CONTROL DEVICES, LATEST EDITION.
- TREES SHALL BE PROTECTED FROM DAMAGE TO THE MAXIMUM EXTENT POSSIBLE. TREES SIX INCH (6") DIAMETER OR GREATER (MEASURED FOUR FEET (4') ABOVE EXISTING GRADE) ADJACENT TO THE LIMITS OF CONSTRUCTION SHALL NOT BE REMOVED OR DAMAGED BY THE CONTRACTOR.
- ALL HORIZONTAL AND VERTICAL CONTROLS ARE BASED ON MARYLAND STATE PLANE COORDINATES SYSTEM PROVIDED BY HOWARD COUNTY.
- TOPOGRAPHY TAKEN FROM MAPS PREPARED BY PHOTOGRAMMETRY BY AERIAL SURVEY IN 1984. TOPOGRAPHY FIELD CHECKED 1986.
- ALL PIPE ELEVATIONS ARE INVERT ELEVATIONS.
- ALL WATER MAINS TO BE D.I.P. CLASS 52 UNLESS OTHERWISE NOTED.
- TOP OF ALL WATER MAINS SHALL HAVE A MINIMUM OF 3'-1/2' COVER UNLESS OTHERWISE NOTED.
- VALVES ADJACENT TO TREES SHALL BE STRAPPED TO TREES.
- ALL WATER MAIN FITTINGS REQUIRE CONCRETE THRUST BLOCKS AS DESCRIBED IN HOWARD COUNTY STANDARD SPECIFICATIONS AND DETAILS MANUAL, VOLUME IV.
- THE CONTRACTOR SHALL NOT OPERATE ANY WATER MAIN VALVES ON THE EXISTING SYSTEM.
- CLEAR ALL UTILITIES BY A MINIMUM OF 12", CLEAR ALL POLES BY 2'-0" MINIMUM OR TUNNEL AS REQUIRED. ANY COST INCURRED TO THE CONTRACTOR FOR TUNNELING OR BRACING AT POLES SHALL BE INCLUDED IN UNIT PRICES BID FOR EXCAVATION AND SHALL BE INCLUDED IN UNIT PRICES BID FOR EXCAVATION BACKFILL.
- SEPARATION BETWEEN WATER AND SANITARY SEWER: WATER MAINS SHALL BE LAID AT LEAST TEN FEET (10') HORIZONTALLY FROM ANY EXISTING OR PROPOSED SEWER. DEVIATION MAY BE ALLOWED FOR INSTALLATION OF THE WATER MAIN CLOSER TO A SEWER, PROVIDED THAT THE WATER MAIN IS LAID IN A SEPARATE TRENCH, SUCH THAT THE BOTTOM OF THE WATER MAIN IS AT LEAST SIX FEET (6') ABOVE THE TOP OF THE SEWER. WATER MAINS CROSSING SEWERS SHALL BE LAID TO PROVIDE A MINIMUM VERTICAL DISTANCE OF TWELVE INCHES (12") BETWEEN THE BOTTOM OF THE WATER MAIN AND THE TOP OF THE SEWER LINE.
- BURY LINE ELEVATIONS ON FIRE HYDRANTS SHALL BE SET TO THE ELEVATIONS SHOWN ON THE DRAWINGS. ALL FIRE HYDRANTS SHALL BE STRAPPED AND BUTTRESSED WITH CONCRETE IN ACCORDANCE WITH STANDARD DETAILS. SOIL AROUND THE FIRE HYDRANT SHALL BE COMPACTED IN ACCORDANCE WITH SECTION 1003 OF THE STANDARD SPECIFICATIONS.
- ALL WATER HOUSE CONNECTIONS SHALL BE FOR AN INSIDE METER SETTING AND SHALL BE CONSTRUCTED PER HOWARD COUNTY STANDARD DETAIL W3.24.
- ALL SEWER MAINS SHALL BE C.S.P.P., R.C.S.P., V.C.P.X., A.C.P. CLASS 2400, OR P.V.C. UNLESS OTHERWISE NOTED.
- THE CONTRACTOR SHALL PROVIDE A JOINT IN ALL SEWER MAINS WITHIN 2'-0" OF EXTERIOR MANHOLE WALL.
- ALL MANHOLES SHALL BE 4'-0" INSIDE DIAMETER, UNLESS OTHERWISE NOTED.
- ALL FIRE HYDRANTS SHALL BE SITUATED PER "LOCATION A", STD. DETAIL W1.11.
- ALL D.I.P. FITTINGS SHALL BE IN ACCORDANCE WITH AWWA SPECIFICATION C153 DUCTILE IRON COMPACT FITTINGS, 3-INCH THROUGH 12-INCH FOR WATER AND OTHER LIQUIDS.
- SERVICE CLAMPS ARE TO HAVE STAINLESS STEEL STRAPS.

LEGEND



SEDIMENT CONTROL MEASURES FOR THIS CONTRACT WILL BE IMPLEMENTED IN ACCORDANCE WITH SECTION 219 OF THE HOWARD COUNTY DESIGN MANUAL AND STANDARDS AND SPECIFICATIONS FOR SOIL EROSION AND SEDIMENT CONTROL IN DEVELOPING AREAS AND ALSO AS SHOWN ON THE GRADING AND SEDIMENT CONTROL PLAN SDP-89-170.

REVIEWED FOR HOWARD SOIL CONSERVATION DISTRICT AND MEETS TECHNICAL REQUIREMENT
James M. Nela 6/9/89
 SIGNATURE DATE

THIS DEVELOPMENT PLAN IS APPROVED FOR SOIL EROSION AND SEDIMENT CONTROL BY THE HOWARD COUNTY CONSERVATION DISTRICT.
 APPROVED *Stephen J. ...* 6/1/89
 HOWARD SCD DATE

OWNER/DEVELOPER
 GORMAN ROAD LIMITED PARTNERSHIP
 C/O JAMES F. KNOTT DEVELOPMENT CORPORATION
 118 WEST ROAD, SUITE 203
 TOWSON, MARYLAND 21284
 (801) 321-6436

INDEX TO DRAWINGS	
1. TITLE SHEET	
2. WATER MAIN PLAN	
3. WATER MAIN PROFILE	

DEPARTMENT OF PUBLIC WORKS
 HOWARD COUNTY, MARYLAND
James M. Nela 6/1/89
 DIRECTOR OF PUBLIC WORKS DATE
Robert ... 6-7-89
 CHIEF, BUREAU OF UTILITIES DATE
... 6/9/89
 CHIEF, BUREAU OF ENGINEERING DATE
... 6/9/89
 CHIEF, LAND DEVELOPMENT DIVISION DATE

PHR&A
 PATTON, HARRIS, RUST & ASSOCIATES, PC
 7609 STANDISH PLACE
 ROCKVILLE, MARYLAND 20855
 METRO: 301-762-2220 BALT: 301-792-7244

DES: M.J.K.				
DRN: E.R.	M.J.K.	4	REQUIRE REVISION PER MD HEALTH DEPT. COMMENTS	6/10/89
	M.J.K.	3	ISSUED TO HOWARD COUNTY FOR SIGNATURE	6-1-89
CHK: M.J.K.	M.J.K.	2	ISSUED TO HOWARD COUNTY FOR 2ND REVIEW	5-28-89
	M.J.K.	1	ISSUED TO HOWARD COUNTY.	3-10-89
DATE:	BY:	NO.	REVISION	DATE

TITLE SHEET
 600' SCALE MAP NO. 47 BLOCK NO.

BOWLING BROOK FARMS
 PARCEL M
 CONTRACT No. 24-1851-D
 A RESUBDIVISION OF LOT 2, BOWLING BROOK FARMS
 SIXTH ELECTION DISTRICT
 HOWARD COUNTY, MARYLAND
 L. 1394 F. 632

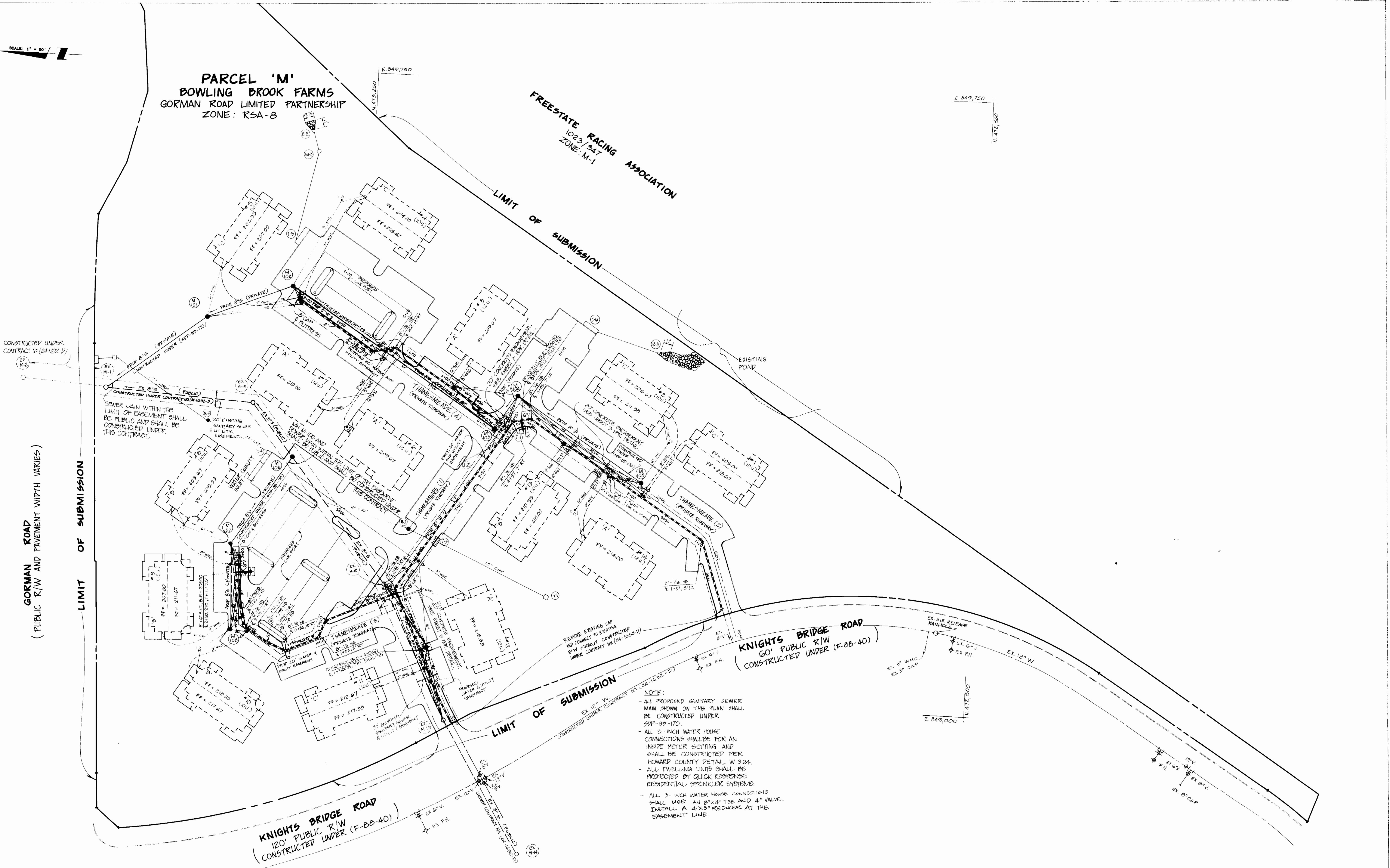
SCALE AS SHOWN
 SHEET 1 OF 3

SCALE: 1" = 80'

PARCEL 'M'
BOWLING BROOK FARMS
 GORMAN ROAD LIMITED PARTNERSHIP
 ZONE: RSA-8

FREESTATE RACING ASSOCIATION
 1023 347
 ZONE: M-1

E 849,750
 N 472,500



SEWER MAIN WITHIN THE LIMIT OF EASEMENT SHALL BE PUBLIC AND SHALL BE CONSTRUCTED UNDER THIS CONTRACT.

GORMAN ROAD
 (PUBLIC R/W AND PAVEMENT WIDTH VARIES)

LIMIT OF SUBMISSION

LIMIT OF SUBMISSION

KNIGHTS BRIDGE ROAD
 60' PUBLIC R/W
 (CONSTRUCTED UNDER (F-88-40))

KNIGHTS BRIDGE ROAD
 120' PUBLIC R/W
 (CONSTRUCTED UNDER (F-88-40))

- NOTE:
- ALL PROPOSED SANITARY SEWER MAIN SHOWN ON THIS PLAN SHALL BE CONSTRUCTED UNDER SPP-89-170
 - ALL 3-INCH WATER HOUSE CONNECTIONS SHALL BE FOR AN INSIDE METER SETTING AND SHALL BE CONSTRUCTED PER HOWARD COUNTY DETAIL W 324.
 - ALL DWELLING UNITS SHALL BE PROTECTED BY QUICK RESPONSE RESIDENTIAL SPRINKLER SYSTEMS.
 - ALL 3-INCH WATER HOUSE CONNECTIONS SHALL USE AN 8"x4" TEE AND 4" VALVE. INSTALL A 4"x3" REDUCER AT THE EASEMENT LINE.

DEPARTMENT OF PUBLIC WORKS
 HOWARD COUNTY, MARYLAND

[Signature]
 Chief, Bureau of Utilities
 DATE: 6-7-89

[Signature]
 Chief, Land Development Division
 DATE: 6/3/89

WILSON
 ENGINEERS, ARCHITECTS & ASSOCIATES, PC
 700 N. WASHINGTON BLVD.
 WASHINGTON, MARYLAND 20008
 METRO: 301-702-7220 BALTO: 301-702-7244

MJK				
EK	MJK	4	REDLINE REVISION PER MD HEALTH DEPT. COMMENTS	8-15-89
	MJK	3	ISSUED TO HOWARD COUNTY FOR SIGNATURE	6-1-89
	MJK	2	ISSUED TO HOWARD COUNTY FOR 2ND REVIEW	3-28-89
	MJK	1	ISSUED TO HOWARD COUNTY	3-10-89

WATER MAIN PLAN

BOWLING BROOK FARMS
 PARCEL M
 CONTRACT No. 24-1851-D
 A RESUBDIVISION OF LOT 2, BOWLING BROOK FARMS
 SIXTH ELECTION DISTRICT
 HOWARD COUNTY, MARYLAND F. 632

SCALE AS SHOWN
 SHEET 2 OF 3

AS-BUILT

