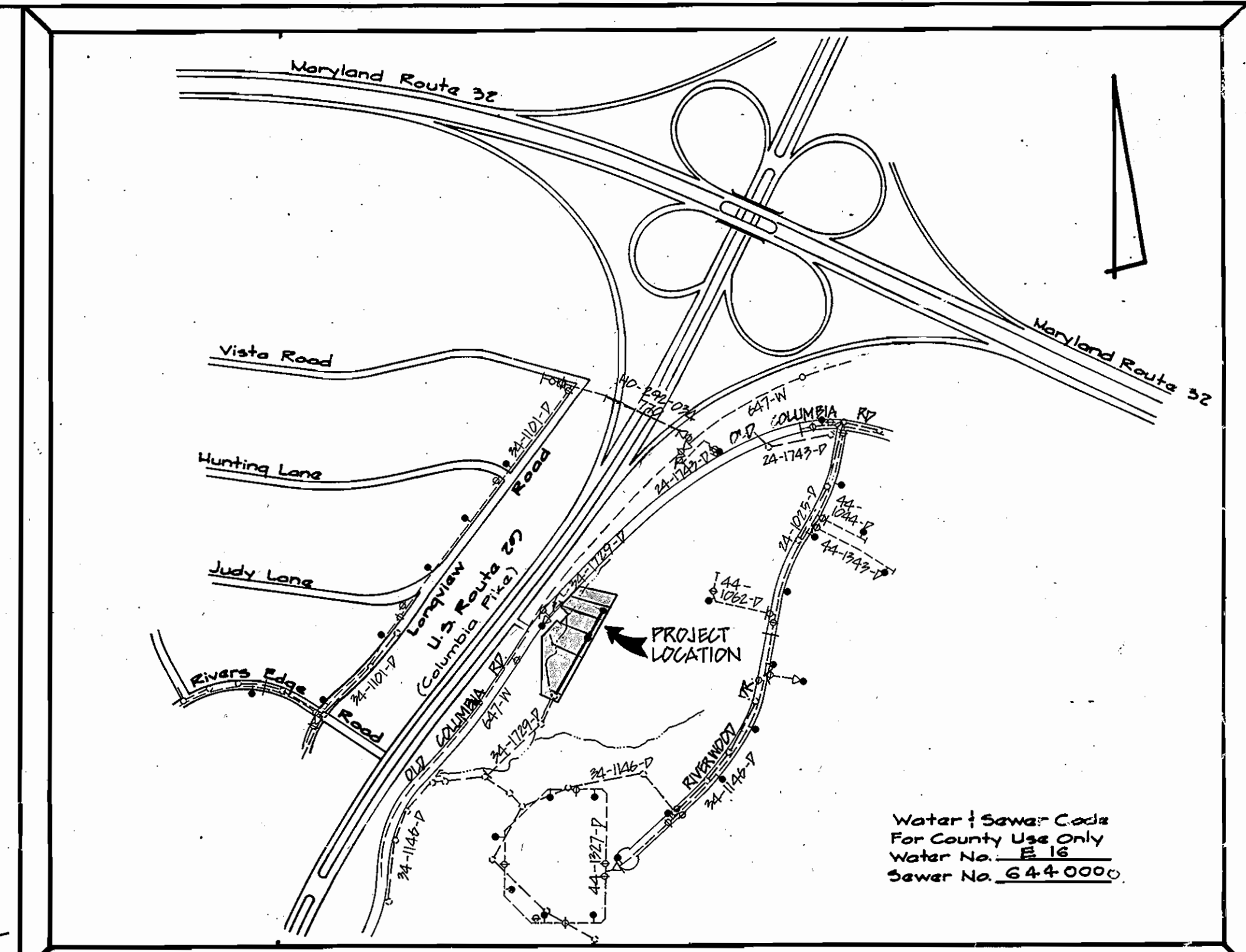


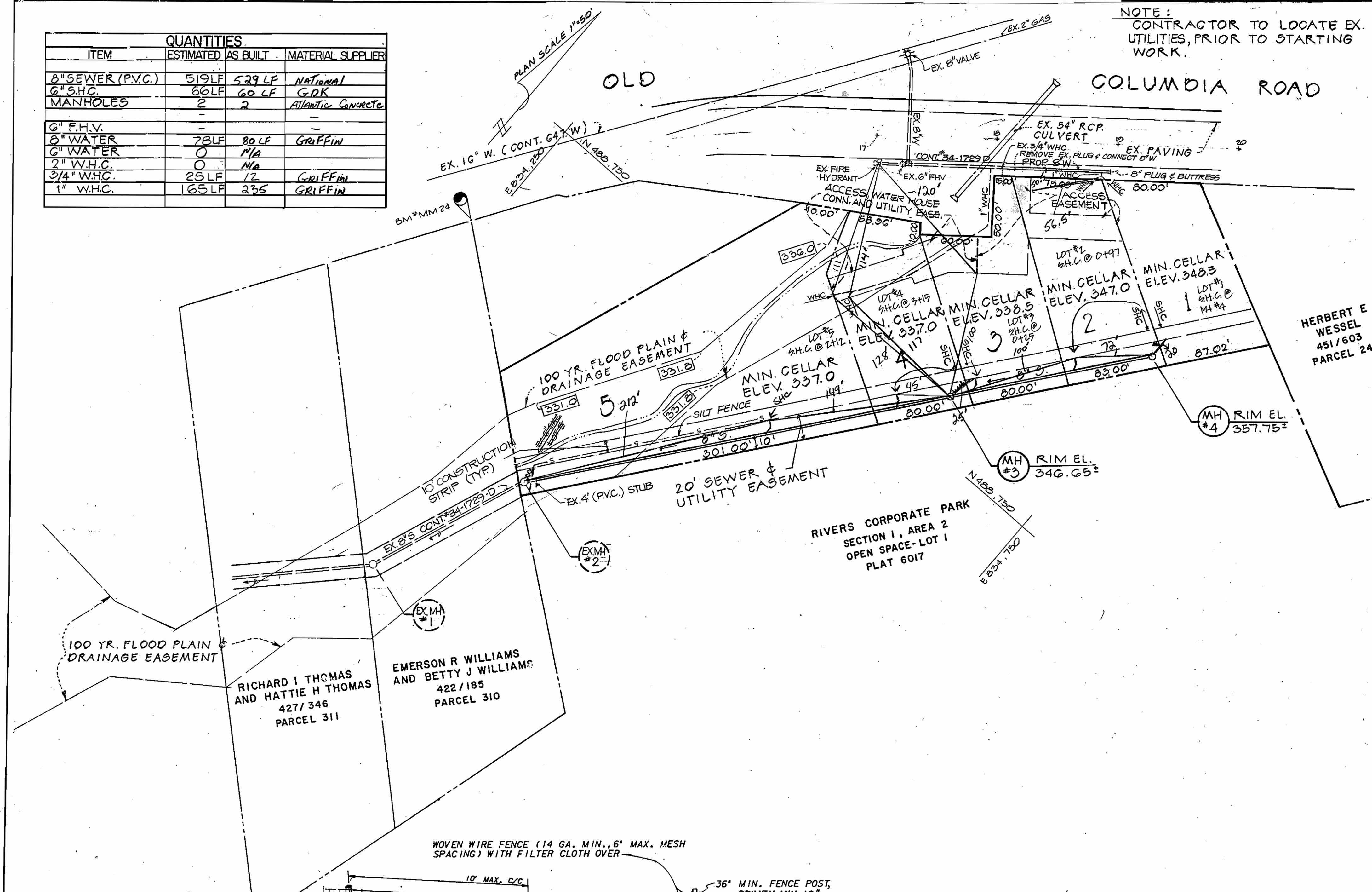
ITEM	QUANTITIES		MATERIAL SUPPLIER
	ESTIMATED	AS BUILT	
8" SEWER (P.V.C.)	519 LF	529 LF	NATIONAL
6" S.H.C.	60 LF	60 LF	G.D.K.
MANHOLES	2	2	ATLANTIC CONCRETE
6" F.H.V.	-	-	-
8" WATER	78 LF	80 LF	GRIFFIN
6" WATER	0	N/A	-
2" W.H.C.	0	N/A	-
3/4" W.H.C.	25 LF	12	GRIFFIN
1" W.H.C.	165 LF	235	GRIFFIN

NOTE:
CONTRACTOR TO LOCATE EX. UTILITIES, PRIOR TO STARTING WORK.



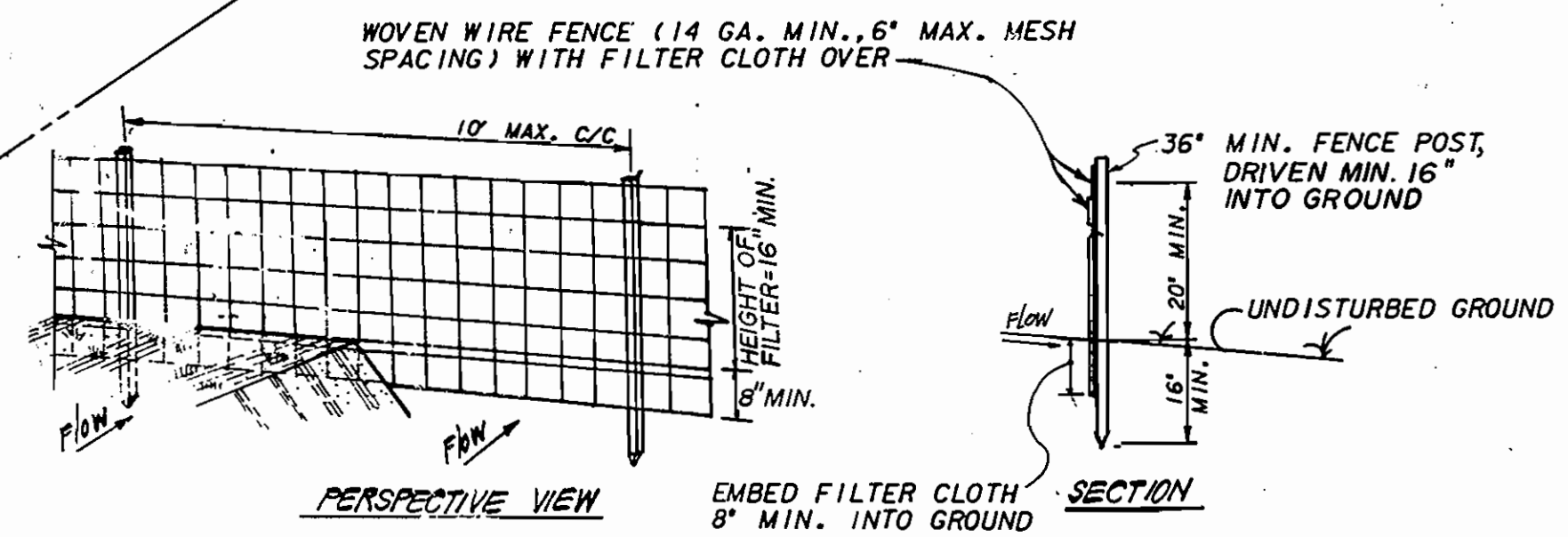
TYPE OF BUILDING	Single Family Detached
NUMBER OF LOTS	5
NO. OF WATER HOUSE CONNECTIONS	4
NO. OF SEWER HOUSE CONNECTIONS	4
DRAINAGE AREA	Middle Potuxent

Vicinity Map
Scale: 1" = 600'



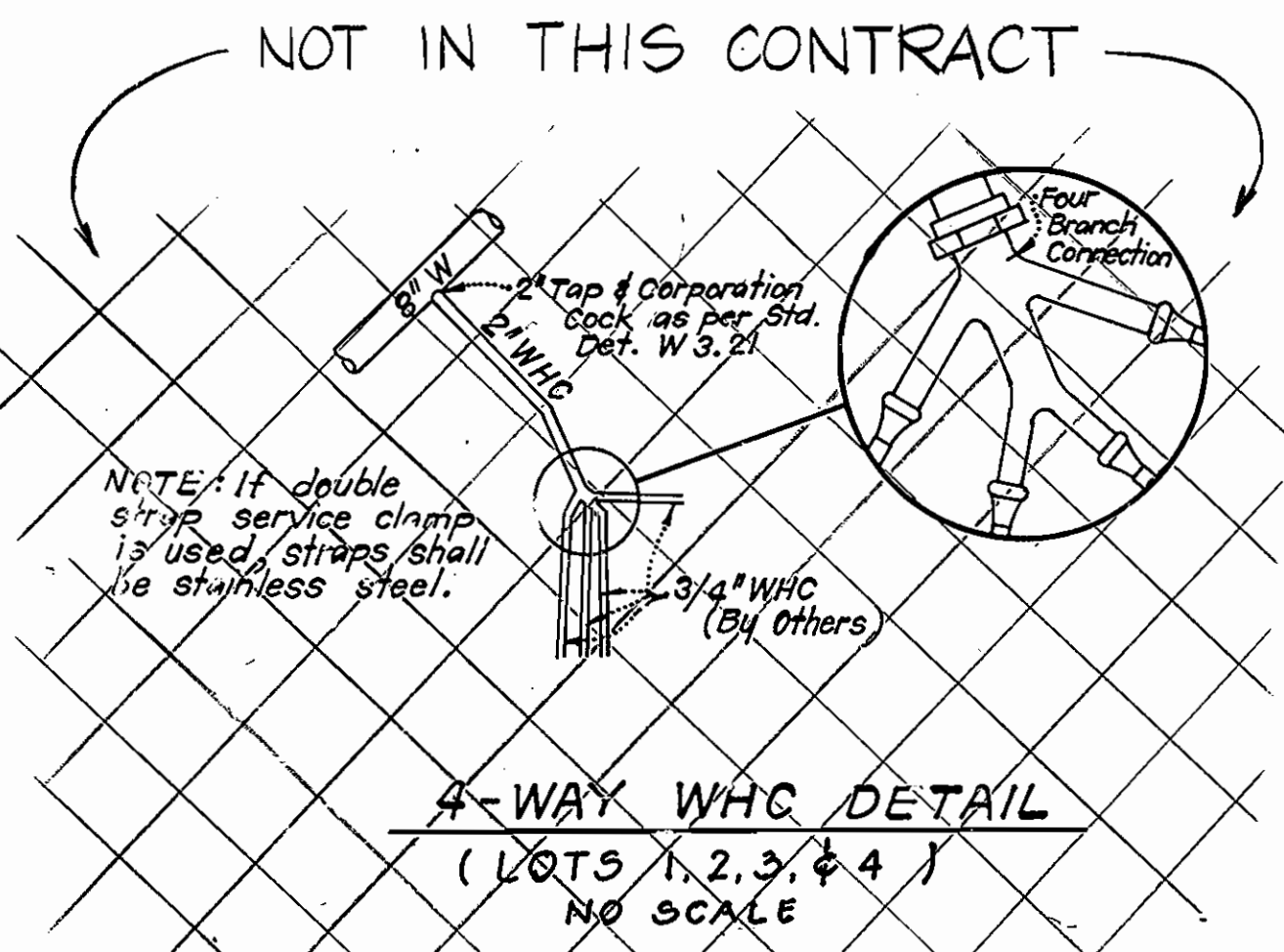
BENCH MARKS:

W, R & A BM#MM24 ELEV. 350.96
R.R. SPIKE IN BASE OF POWER POLE C&P #1,
B.G. 8E. #387093, APPROX. AT STA. 13+60, 20'±
RIGHT OF OLD COLUMBIARD.



- WOVEN WIRE FENCE TO BE FASTENED SECURELY TO FENCE POSTS WITH WIRE TIES OR STAPLES. POSTS: STEEL EITHER T OR U TYPE OR 2" HARDWOOD
- FILTER CLOTH TO BE FASTENED SECURELY TO WOVEN WIRE FENCE WITH TIES SPACED EVERY 24" AT TOP AND MID SECTION. FENCE: WOVEN WIRE, 14 GA. 6" MAX MESH OPENING
- WHEN TWO SECTIONS OF FILTER CLOTH ADJOIN EACH OTHER THEY BE OVER LAPPED BY SIX INCHES AND FOLDED. FILTER CLOTH: FILTER X, MIRAFIBROX, STABILINKA 114N OR APPROVED EQUAL
- MAINTENANCE SHALL BE PERFORMED AS NEEDED AND MATERIAL REMOVED WHEN 'BULGES' DEVELOP IN THE SILT FENCE. FABRICATED UNIT: GEOFAB, ENVIROFENCE, OR APPROVED EQUAL.

SILT FENCE DETAIL (S)
NO SCALE



4-WAY WHC DETAIL
(LOTS 1, 2, 3 & 4)
NO SCALE

GENERAL NOTES

- APPROXIMATE LOCATION OF EXISTING MAINS ARE SHOWN. THE CONTRACTOR SHALL TAKE ALL NECESSARY PRECAUTIONS TO PROTECT EXISTING MAINS AND SERVICES AND MAINTAIN UNINTERRUPTED SUPPLY. ANY DAMAGE INCURRED SHALL BE REPAIRED IMMEDIATELY TO THE SATISFACTION OF THE ENGINEER AT THE CONTRACTOR'S EXPENSE.
- ALL HORIZONTAL CONTROLS ARE BASED ON MARYLAND STATE COORDINATES.
- ALL VERTICAL CONTROLS ARE BASED ON U.S.G.S. DATA.
- ALL PIPE ELEVATIONS SHOWN ARE INVERT ELEVATIONS.
- CLEAR ALL UTILITIES BY A MINIMUM OF 6".
- FOR DETAILS NOT SHOWN ON THE DRAWINGS, AND FOR MATERIALS AND CONSTRUCTION METHODS, USE HOWARD COUNTY DESIGN MANUAL, VOLUME IV, STANDARD SPECIFICATIONS AND DETAILS FOR CONSTRUCTION. THE CONTRACTOR SHALL HAVE A COPY OF VOLUME IV, ON THE JOB.
- WHERE TEST PITS HAVE BEEN MADE ON EXISTING UTILITIES, THEY ARE NOTED BY THE SYMBOL AT THE LOCATION OF THE TEST PIT. A NOTE OR NOTE CONTAINING THE RESULTS OF THE TEST PIT OR PITS IS INCLUDED ON THE DRAWINGS. EXISTING UTILITIES IN THE VICINITY OF THE PROPOSED WORK FOR WHICH TEST PITS HAVE NOT BEEN DUG SHALL BE VERIFIED BY THE CONTRACTOR TO HIS OWN SATISFACTION. ANY DAMAGE TO EXISTING FACILITIES DUE TO THE CONTRACTOR'S NEGLIGENCE SHALL BE REPAIRED AT THE CONTRACTOR'S EXPENSE.
- CONTRACTOR SHALL NOTIFY THE FOLLOWING UTILITIES OR AGENCIES AT LEAST FIVE WORKING DAYS BEFORE STARTING WORK SHOWN ON THESE PLANS:
STATE HIGHWAY ADMINISTRATION - 531-5533
BALTIMORE GAS & ELECTRIC CO. - CONTRACTOR SERVICES 561-2585
BALTIMORE GAS & ELECTRIC CO. UNDERGROUND DAMAGE CONTROL - 234-5621
BALTIMORE GAS & ELECTRIC CO. TROUBLE SHOOTING - 298-9013
MISS UTILITY - 1-559-0100
COLONIAL PIPELINE CO. - 795-1390
BUREAU OF UTILITIES, HOWARD COUNTY DEPARTMENT OF PUBLIC WORKS - 992-2366
- TREES AND SHRUBS ARE TO BE PROTECTED FROM DAMAGE TO MAXIMUM EXTENT. TREES AND SHRUBS LOCATED WITHIN THE CONSTRUCTION STRIP ARE NOT TO BE REMOVED OR DAMAGED BY THE CONTRACTOR.
- CONTRACTOR SHALL REMOVE TREES, STUMPS AND ROOTS ALONG LINE OF EXCAVATION. PAYMENT FOR SUCH REMOVAL SHALL BE INCLUDED IN THE UNIT PRICE FOR CONSTRUCTION OF THE MAIN.
- ALL WATER MAINS TO BE D.I.P. CLASS 52 UNLESS OTHERWISE NOTED.
- TOPS OF ALL WATER MAINS TO HAVE A MINIMUM OF 3-1/2" COVER UNLESS OTHERWISE NOTED.
- VALVES ADJACENT TO TEES SHALL BE STRAPPED TO TEES.
- ALL FITTINGS SHALL BE BUTTRESSED OR ANCHORED WITH CONCRETE IN ACCORDANCE WITH THE STANDARD DETAIL UNLESS OTHERWISE PROVIDED FOR ON THE DRAWINGS.
- FIRE HYDRANTS SHALL BE SET TO THE BURY LINE ELEVATIONS SHOWN ON THE DRAWINGS.
- ALL FIRE HYDRANTS SHALL BE STRAPPED AND BUTTRESSED WITH CONCRETE IN ACCORDANCE WITH STANDARD DETAIL. SOIL AROUND THE FIRE HYDRANT SHALL BE COMPACTED IN ACCORDANCE WITH SECTION 1003 OF THE STANDARD SPECIFICATIONS.
- THE CONTRACTOR SHALL NOT OPERATE ANY WATER MAIN VALVES ON THE EXISTING WATER SYSTEM.
- ALL WATER HOUSE CONNECTIONS SHALL BE FOR INSIDE METER SETTING, UNLESS OTHERWISE NOTED ON THE PLANS OR IN THE SPECIFICATIONS.
- ALL SEWER MAINS SHALL BE C.S.P.X., R.C.S.P., V.C.P.X., A.C.P. CLASS 240' OR P.V.C. UNLESS OTHERWISE NOTED.
- THE CONTRACTOR SHALL PROVIDE A JOINT IN ALL SEWER MAINS WITHIN 2'-0" OF EXTERIOR MANHOLE WALL.
- ALL MANHOLES SHALL BE 4'-0" INSIDE DIAMETER UNLESS OTHERWISE NOTED.
- MANHOLES SHOWN WITH 12" AND 16" WALLS ARE FOR BRICK MANHOLES ONLY.
- MANHOLES DESIGNATED W.T. IN PLAN AND PROFILE SHALL HAVE WATER TIGHT FRAME AND COVERS. STANDARD DETAIL GS.52. WHERE WATER TIGHT MANHOLE FRAME AND COVER IS USED, SET TOP OF FRAME 1'-6" ABOVE FINISHED GRADE UNLESS OTHERWISE NOTED ON THE DRAWINGS.
- HOUSE(S) WITH THE SYMBOL 'C.N.S.' INDICATES THAT CELLAR CANNOT BE SERVED.

CONGEDO PROPERTY
CONTRACT NO.
PARCEL 367, TAX MAP 41
OLD COLUMBIA ROAD
WATER AND SEWER EXTENSION
HOWARD COUNTY, MARYLAND

REVIEWED FOR HOWARD SOIL CONSERVATION DISTRICT AND MEETS TECHNICAL REQUIREMENTS
[Signature] 11-14-88
SIGNATURE DATE
US. SOIL CONSERVATION SERVICE

This Development Plan is approved for Soil Erosion and Sediment Control by the Howard Soil Conservation District.
APPROVED:
[Signature] 11/14/88
Howard S.C.D. DATE

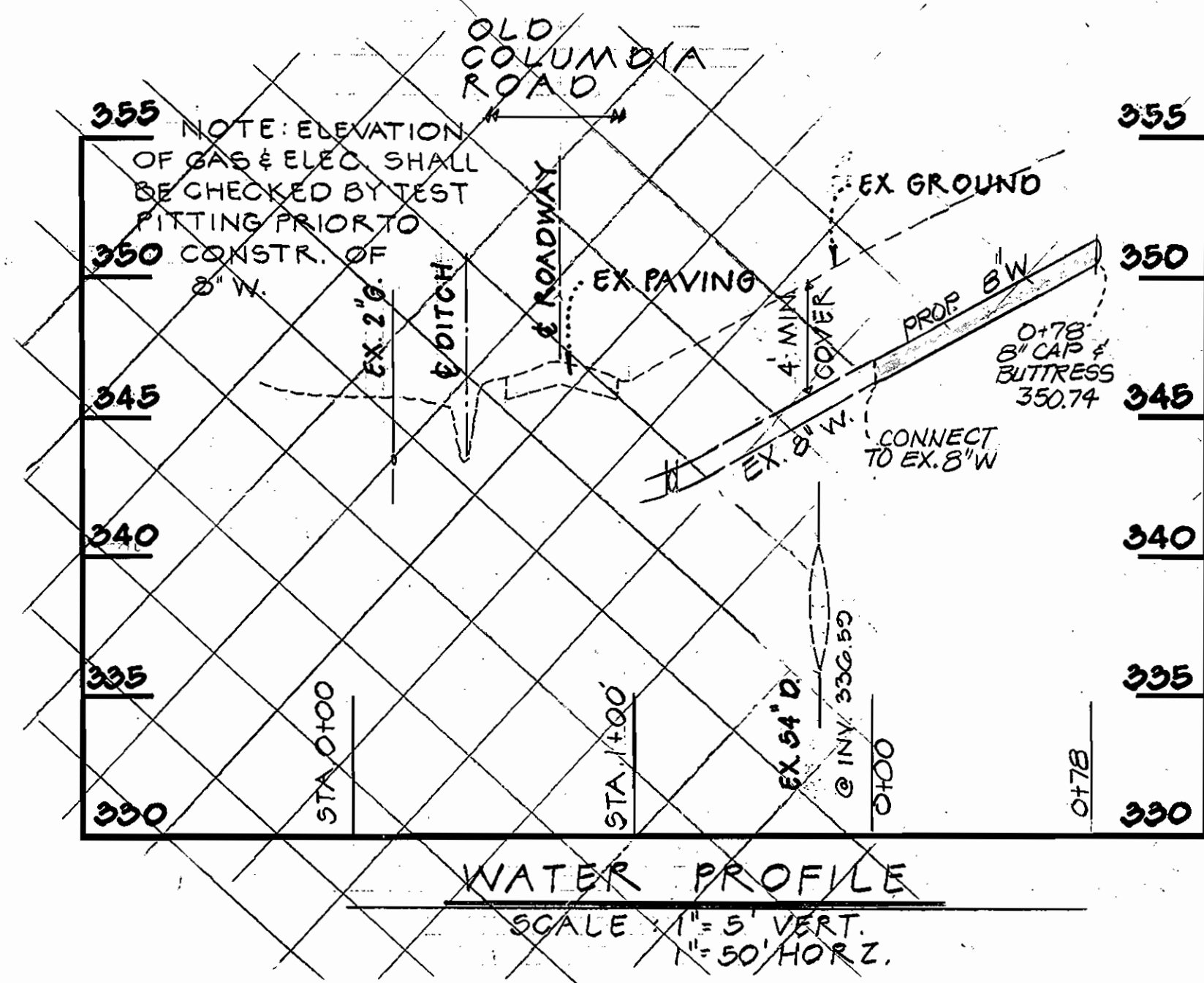
DEPARTMENT OF PUBLIC WORKS
HOWARD COUNTY, MARYLAND
[Signature] 11/16/88
DIRECTOR OF PUBLIC WORKS DATE
[Signature] 11-9-88
CHIEF, BUREAU OF UTILITIES DATE
[Signature] 11/15/88
CHIEF, LAND DEVELOPMENT DIVISION DATE

HODKINS ASSOCIATES INC.
ENGINEERS • SURVEYORS
231 JOSEPH SQUARE
COLUMBIA, MD. 21044
[Signature] 11/25/88
PROFESSIONAL ENGINEER DATE

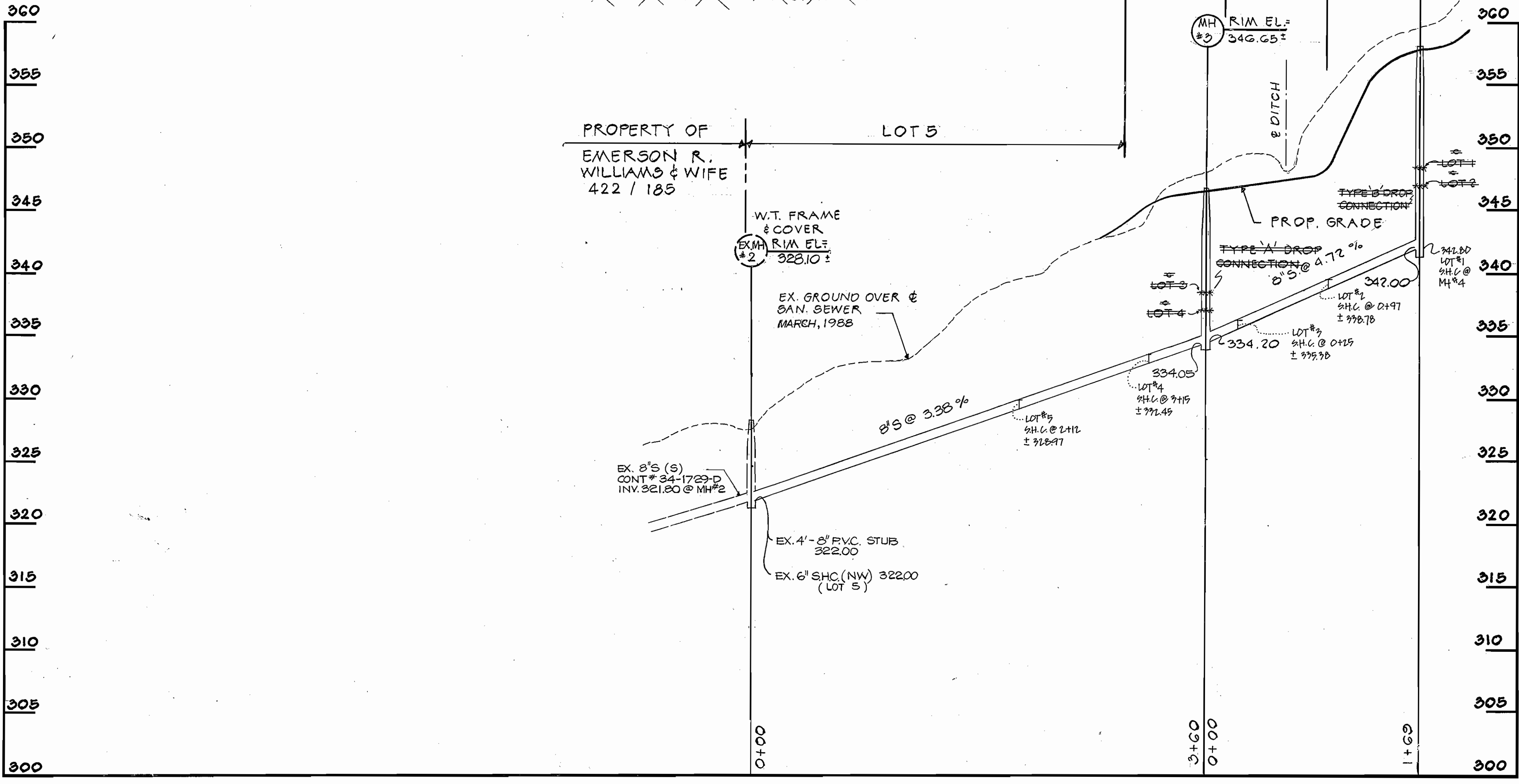
DES:					
DRN:					
CHK:					
DATE:	Y.P.	1	REVISED AS-BUILT SH.C. PER LOW COVER	44/80	
	BY	NU.	REVISION	DATE	

PLAN
WATER AND SEWER MAIN
600' SCALE MAP NO. 41 BLOCK NO. 6

CONGEDO PROPERTY
WATER AND SEWER EXTENSION
OLD COLUMBIA ROAD
CONTRACT NO. 34-1845-D
SIXTH ELECTION DISTRICT
HOWARD COUNTY, MARYLAND AS-BUILT
SCALE AS SHOWN
SHEET 1 OF 2



WATER PROFILE
SCALE: 1" = 5' VERT.
1" = 50' HORZ.



SEWER PROFILE
SCALE: 1" = 5' VERT.
1" = 50' HORZ.

DEPARTMENT OF PUBLIC WORKS HOWARD COUNTY, MARYLAND James M. Shaw DIRECTOR OF PUBLIC WORKS Robert M. Benjamin CHIEF, BUREAU OF UTILITIES	HUDKINS ASSOCIATES INC. ENGINEERS · SURVEYORS 231 JOSEPH SQUARE COLUMBIA, MD. 21044		DES:		PROFILES OF WATER AND SEWER MAINS	CONGEDO PROPERTY WATER AND SEWER EXTENSION OLD COLUMBIA ROAD CONTRACT NO. 34-1845-D SIXTH ELECTION DIST. HOWARD COUNTY, MARYLAND	SCALE AS SHOWN SHEET 2 OF 2
			DRN:				