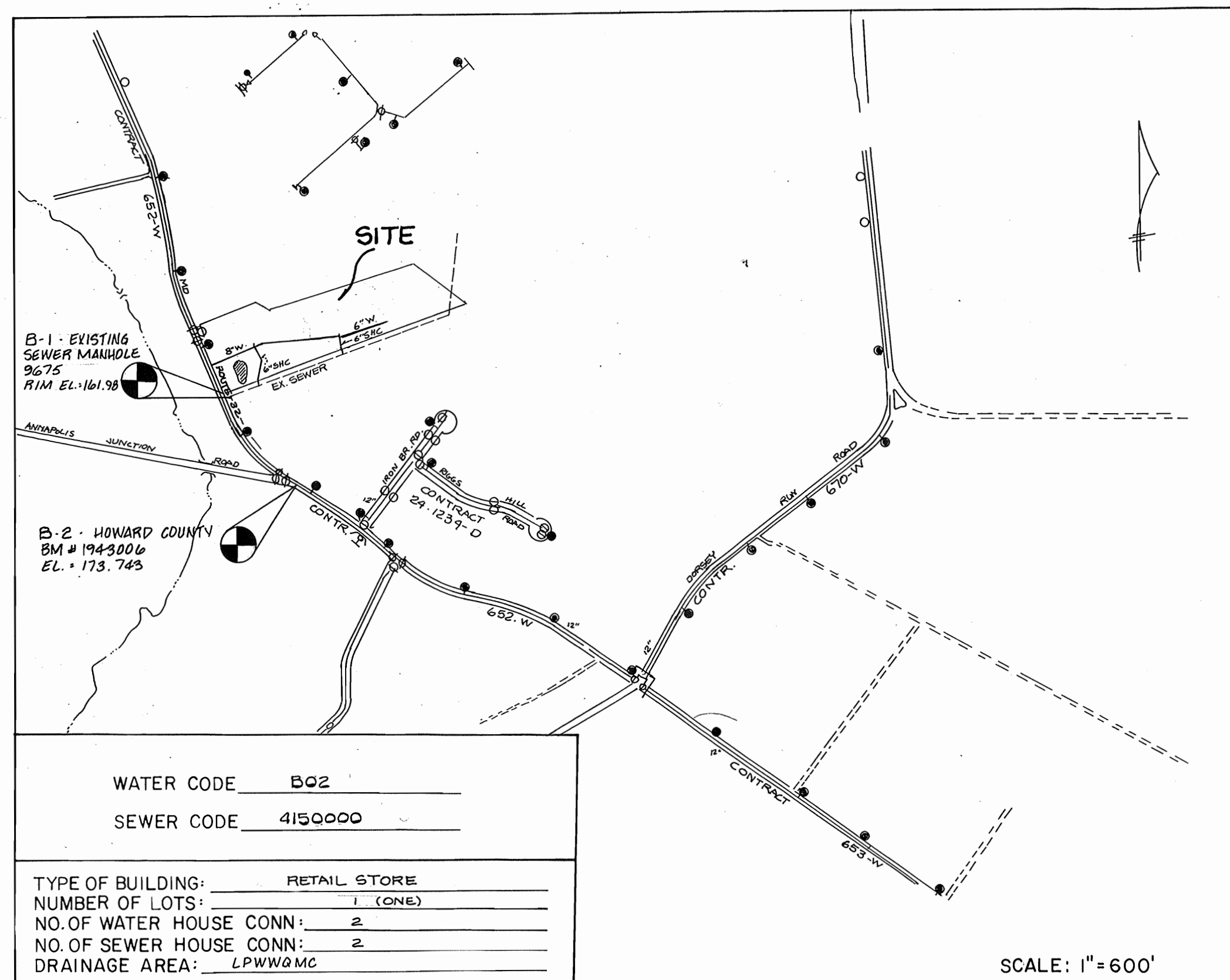


QUANTITIES			
ITEM:	DESIGN:	AS BUILT:	MAT'L/SUPPLIER
8" WATER	554 FT.	722 L.F.	A & P WATER & SEWER/ ATLANTIC STATES
6" SHC	23 FT.		A & P WATER & SEWER/ ATLANTIC STATES
6" WATER	365 FT.	482.8	A & P WATER & SEWER/ ATLANTIC STATES
FIRE HYDRANTS	2	2	MUELLER CO
8"x8" TEE	2	2	A & P WATER & SEWER/ UNION FOUNDRY
8" VALVE	2	2	A & P WATER & SEWER/ MUELLER CO
6" FH VALVE	2	2	A & P WATER & SEWER/ UNION FOUNDRY
8" X 6" REDUCER	1	1	A & P WATER & SEWER/ UNION FOUNDRY
12"x8" T.S. & V	1	1	A & P WATER & SEWER/ MUELLER CO
CLEANOUT	2	5	CHARLOTTE PIPE
8" X 6" FHT	1	1	A & P WATER & SEWER/ TANITY VALVE IRON & STEEL
6" X 6" FHT	1	1	"
1/32 HB	4	4	"
1/16 H	1	1	"
12" X 6" TS & V	1	1	A & P WATER & SEWER/ MUELLER CO

**SEDIMENT CONTROL NOTES**

- FOR SEDIMENT CONTROL FOR THIS CONTRACT, SEE THE APPROVED ROAD CONSTRUCTION PLANS.
- MATERIALS FROM TRENCH EXCAVATION TO BE PLACED ON UPHILL SIDE OF TRENCH.
- CONTRACTOR TO BACKFILL, COMPACT AND STABILIZE IMMEDIATELY AFTER INSTALLATION OF PIPE. NO TRENCHES WILL BE LEFT OPEN AT THE END OF EACH DAY, EXCEPT THAT PORTION WHERE WORK HAS STOPPED.
- ANY SEDIMENT CONTROL FACILITIES ENCOUNTERED DURING PIPE CONSTRUCTION TO BE RETURNED TO ORIGINAL CONDITION IMMEDIATELY UPON COMPLETION OF THAT PORTION OF WORK.
- SEDIMENT CONTROL MEASURES FOR THIS CONTRACT WILL BE IMPLEMENTED IN ACCORDANCE WITH SECTION 219 OF THE HOWARD COUNTY STANDARDS SPECIFICATIONS AND AS PER ROAD CONSTRUCTION PLANS **SDP-86-221**



**GENERAL NOTES :**

- APPROXIMATE LOCATION OF EXISTING MAINS ARE SHOWN. THE CONTRACTOR SHALL TAKE ALL NECESSARY PRECAUTIONS TO PROTECT EXISTING MAINS AND SERVICES AND MAINTAIN UNINTERRUPTED SUPPLY. ANY DAMAGE INCURRED SHALL BE REPAIRED IMMEDIATELY TO THE SATISFACTION OF THE ENGINEER AT THE CONTRACTOR'S EXPENSE.
- ALL HORIZONTAL CONTROLS ARE BASED ON MARYLAND STATE COORDINATES.
- ALL VERTICAL CONTROLS ARE BASED ON USGS DATUM.
- ALL PIPE ELEVATIONS SHOWN ARE INVERT ELEVATIONS.
- CLEAR ALL UTILITIES BY A MINIMUM OF 6" CLEAR ALL POLES BY 2'-0" MINIMUM OR TUNNEL AS REQUIRED. ANY COST INCURRED TO THE CONTRACTOR FOR TUNNELING OR BRACING AT POLES SHALL BE INCLUDED IN THE UNIT PRICE BID FOR CONSTRUCTION OF THE MAIN.
- FOR DETAILS NOT SHOWN ON THE DRAWINGS USE HOWARD COUNTY STANDARD DETAILS.
- FOR MATERIALS AND CONSTRUCTION METHODS USE HOWARD COUNTY STANDARD SPECIFICATIONS.
- CONTRACTOR SHALL LOCATE EXISTING UTILITIES A MINIMUM OF TWO (2) WEEKS IN ADVANCE OF CONSTRUCTION OPERATIONS IN THE VICINITY OF PROPOSED UTILITIES AT HIS OWN EXPENSE.
- CONTRACTOR SHALL NOTIFY THE FOLLOWING UTILITIES OR AGENCIES AT LEAST FIVE (5) WORKING DAYS BEFORE STARTING WORK SHOWN ON THESE PLANS:
  - STATE HIGHWAY ADMINISTRATION 531-5533
  - BALTIMORE GAS & ELECTRIC CO. UNDERGROUND ELECTRIC DISTRIBUTION CUSTOMER SERVICE 685-0123
  - BALTIMORE GAS & ELECTRIC CO. UNDERGROUND GAS DISTRIBUTION CUSTOMER SERVICE 685-0123
  - ENGINEERING DAMAGE CONTROL 234-5621
  - MISS UTILITY 1-599-0100
  - CHESAPEAKE & POTOMAC (C&P) TELEPHONE CO. 725-9976
  - AMERICAN TELEPHONE & TELEGRAPH CABLE LOCATION DIVISION 393-3553
  - COLONIAL PIPELINE CO. 795-1390
  - BUREAU OF UTILITIES HOWARD COUNTY 992-2366
- TREES ARE TO BE PROTECTED FROM DAMAGE TO MAXIMUM EXTENT. TREES LOCATED WITHIN THE CONSTRUCTION STRIP ARE NOT TO BE REMOVED OR DAMAGED BY THE CONTRACTOR.
- CONTRACTOR SHALL REMOVE TREES, STUMPS AND ROOTS ALONG LINE OF EXCAVATION AS DIRECTED BY THE ENGINEER. PAYMENT FOR SUCH REMOVAL SHALL BE INCLUDED IN THE UNIT PRICE BID FOR CONSTRUCTION OF THE MAIN.
- PLACE REGULATION "MEN WORKING" AND WARNING SIGNS AS REQUIRED TO COMPLY WITH MARYLAND STATE HIGHWAY ADMINISTRATION MANUAL OF TRAFFIC CONTROL FOR HIGHWAY CONSTRUCTION AND MAINTENANCE OPERATIONS.
- ALL WATER MAINS TO BE CLASS 52 D.I.P. UNLESS OTHERWISE NOTED.
- TOP OF ALL WATER MAINS TO HAVE A MINIMUM OF 3'-6" COVER UNLESS OTHERWISE NOTED.
- VALVES ADJACENT TO TEES SHALL BE STRAPPED TO TEES.
- BLOCK ALL FITTINGS WITH CONCRETE.
- BURY LINE ELEVATIONS ON FIRE HYDRANTS SHALL BE SET TO THE ELEVATIONS SHOWN ON THE DRAWINGS. ALL FIRE HYDRANTS SHALL BE STRAPPED AND BUTTRESSED WITH CONCRETE IN ACCORDANCE WITH STANDARD DETAILS.
- ALL WATER HOUSE CONNECTIONS SHALL BE FOR AN INSIDE METER SETTING.
- THE CONTRACTOR SHALL NOT OPERATE ANY WATER MAIN VALVES ON THE EXISTING SYSTEM.
- FOR ALL COPPER WATER HOUSE CONNECTIONS, UTILIZE FLARED TYPE FITTINGS ONLY.
- ALL SEWER MAINS SHALL BE C.S.P.X., R.C.S.P., V.C.P.X., A.C.P. CLASS 2400 OR PVC UNLESS OTHERWISE NOTED.
- THE CONTRACTOR SHALL PROVIDE A JOINT IN ALL SEWER MAINS WITHIN 2'-0" OF EXTERIOR MANHOLE WALL.
- ALL MANHOLES SHALL BE 4'-0" INSIDE DIAMETER UNLESS OTHERWISE NOTED.
- FORCE MAINS SHALL BE D.I.P. ONLY.
- MANHOLES SHOWN WITH 12" AND 16" WALLS ARE BRICK MANHOLES ONLY.
- MANHOLES DESIGNATED W.T. IN PLAN AND PROFILE SHALL HAVE WATERTIGHT FRAME AND COVERS STANDARD DETAIL C.S. 52. WHERE WATERTIGHT MANHOLE FRAME AND COVER IS USED, SET TOP OF FRAME 1'-6" ABOVE FINISHED GRADE STANDARD DETAIL C.S. 41.
- HOUSES WITH THE SYMBOL "C.N.S." INDICATES THAT CELLAR CAN NOT BE SERVED.
- D.I.P. FITTINGS 12 INCHES AND SMALLER SHALL BE CLASS 250. THOSE 14 INCHES AND LARGER SHALL BE CLASS 150. CAPS AND PLUGS 24 INCHES AND SMALLER SHALL BE CLASS 250, 24 INCHES AND LARGER SHALL BE CLASS 150.

# CORRIDOR CONDOMINIUM LIMITED PARTNERSHIP

HOWARD COUNTY, MARYLAND

## DEPARTMENT OF PUBLIC WORKS

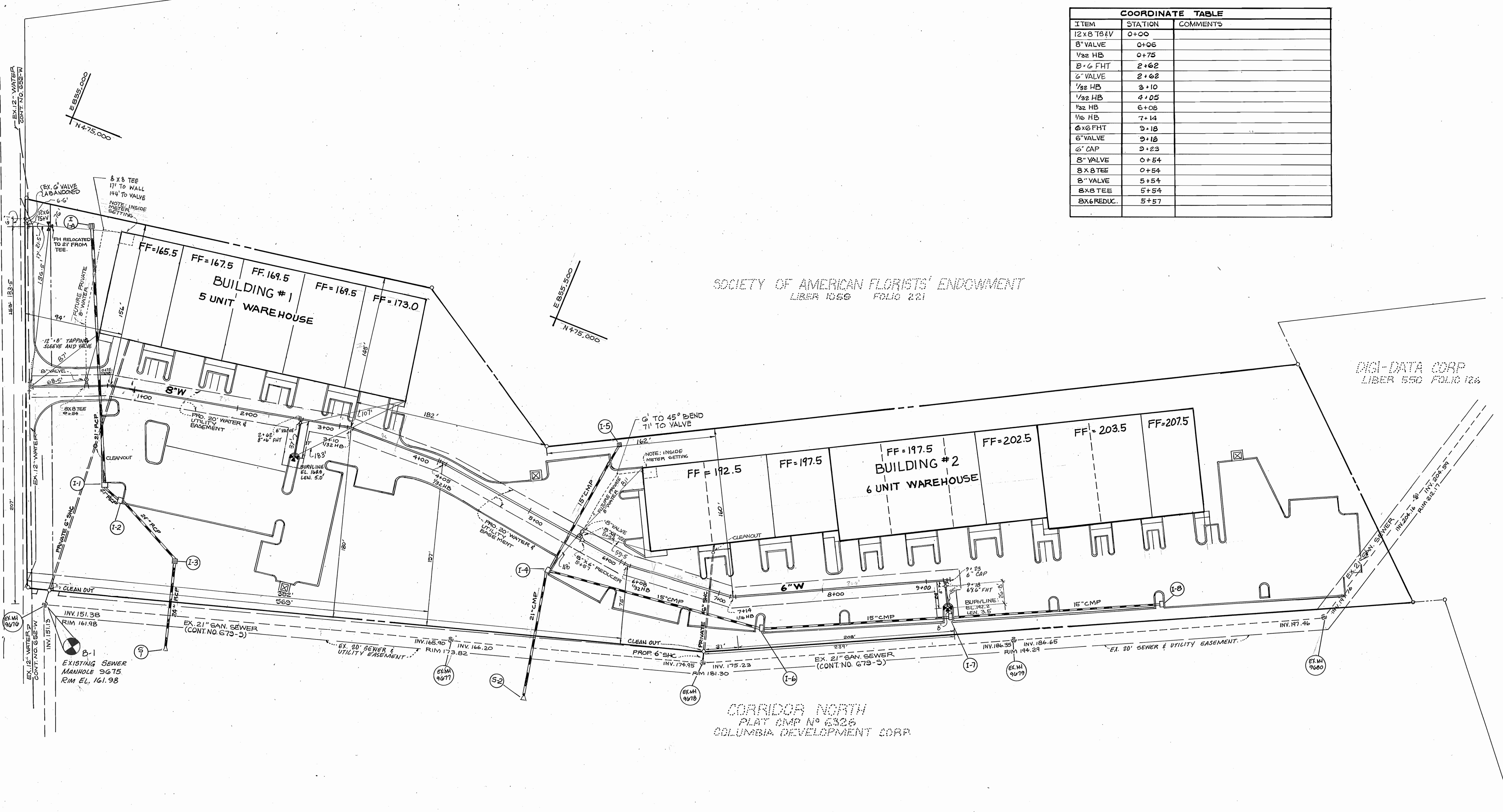
CONTRACT NO. 24-1835-D

SHEET INDEX	
NO.	TITLE
1 of 3	COVER SHEET
2 of 3	PLAN VIEW
3 of 3	PROFILE

REVIEWED FOR HOWARD COUNTY CONSERVATION DISTRICT AND MEETS TECHNICAL REQUIREMENTS <i>James R. ...</i> 11-21-88 U.S. SOIL CONSERVATION SERVICE	THIS DEVELOPMENT PLAN IS APPROVED FOR SOIL EROSION AND SEDIMENT CONTROL BY THE HOWARD COUNTY CONSERVATION DISTRICT. APPROVED: <i>Stephen R. ...</i> 11/21/88 HOWARD S.C.D.	DEPARTMENT OF PUBLIC WORKS HOWARD COUNTY, MARYLAND <i>James R. ...</i> 11/22/88 DIRECTOR OF PUBLIC WORKS	KIDDE CONSULTANTS INC. ENGINEERS, PLANNERS & SURVEYORS 1100 WEST STREET / SUITE 100 LAUREL, MD 20707 (301) 792-8086 (301) 953-1821 JOHN E.C. PATMORE MD.PE. NO. 8978	DES: E.M.M. DRN: E.M.M. CHK: D.C.W. DATE:	LOCATION MAP CONTRACT 24-1835-D 8" & 6" WATER PLAN AND PROFILES	CORRIDOR CONDOMINIUM LIMITED PARTNERSHIP TAX MAP 48 PARCEL 15 6th ELECTION DISTRICT HOWARD COUNTY, MD.	SCALE AS SHOWN SHEET 1 OF 3
---	--	---	---	--	--	---	--------------------------------



GUILFORD ROAD (OLD MD. RTE. 32)



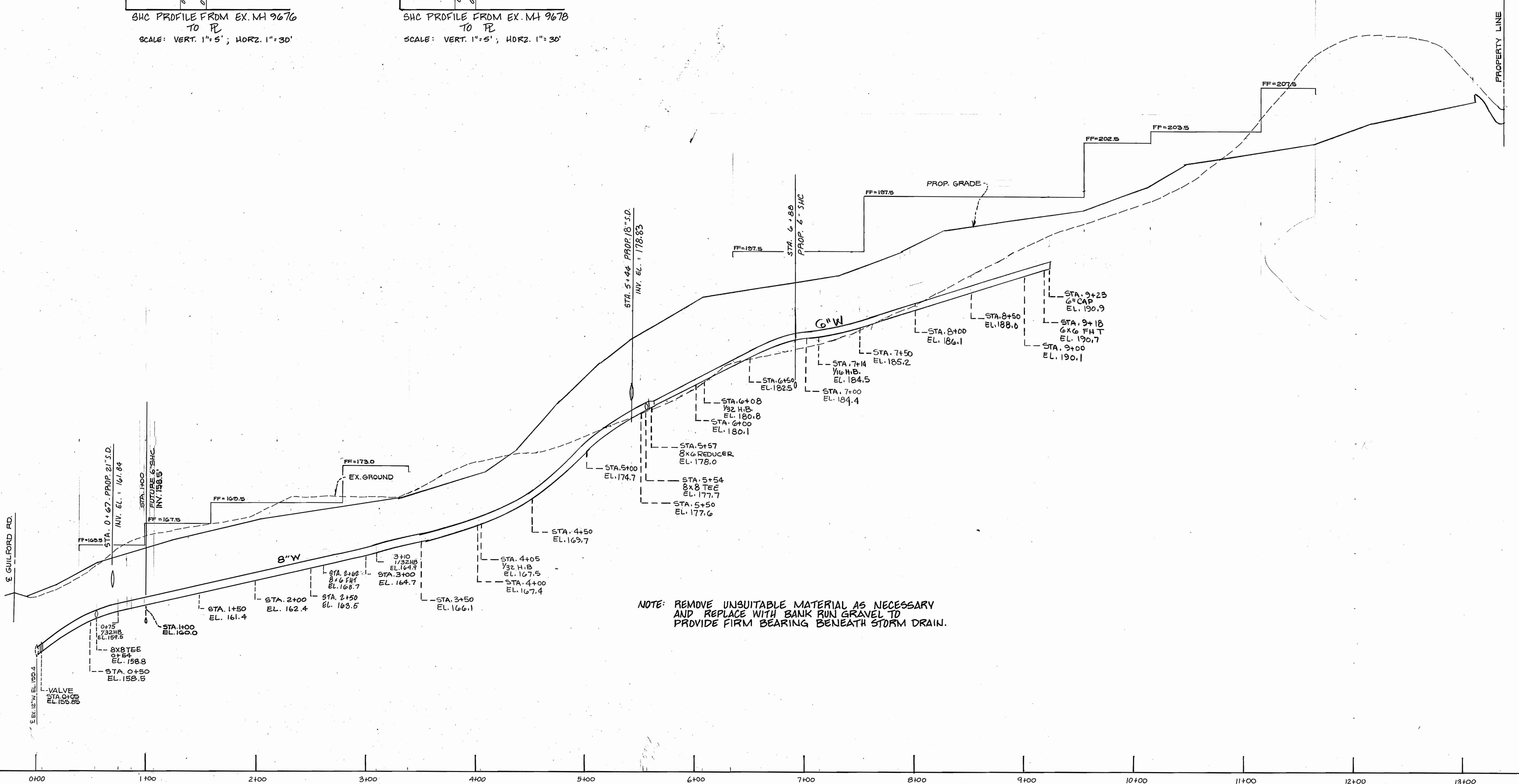
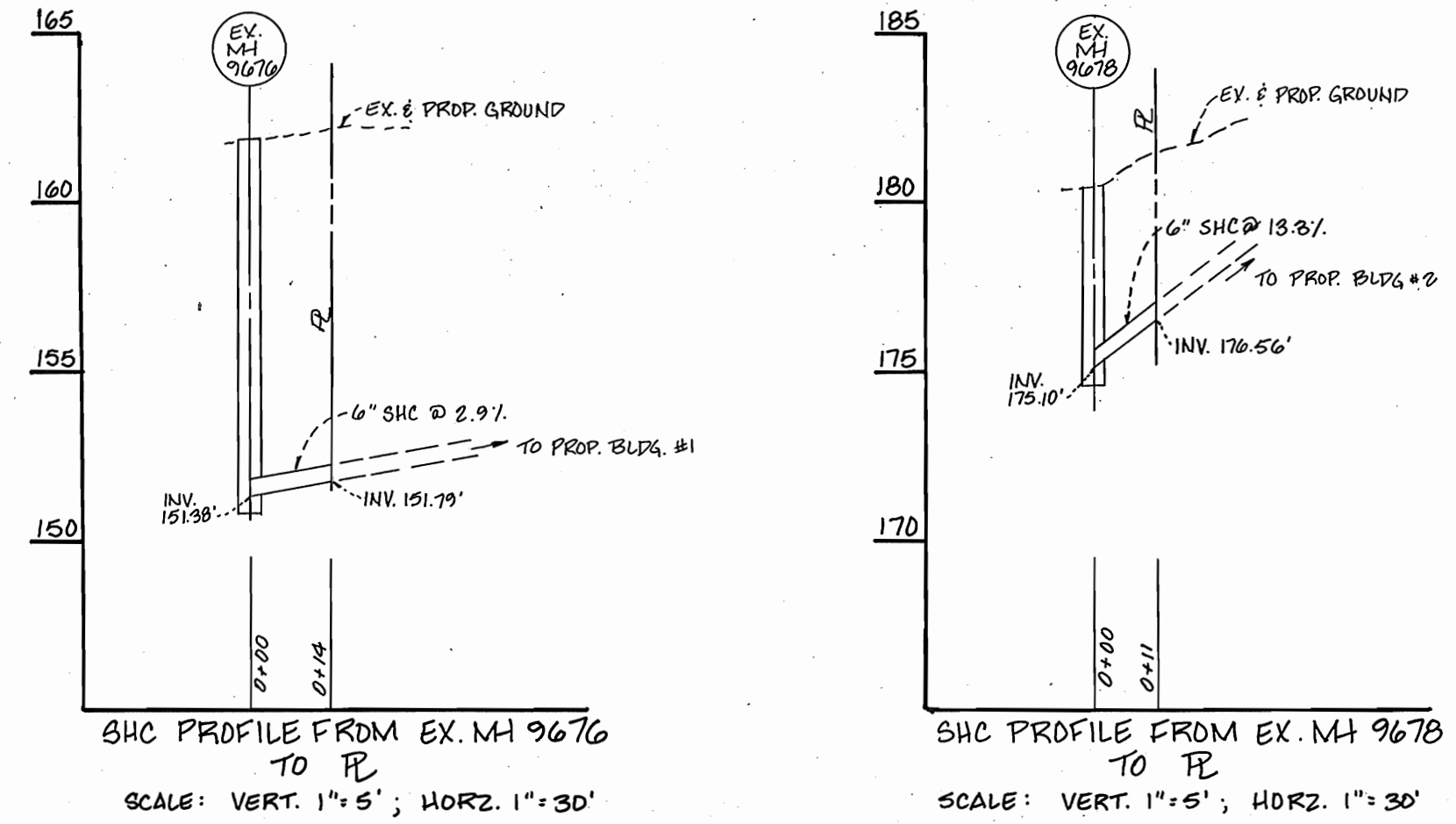
ITEM	STATION	COMMENTS
12x8 T&V	0+00	
8" VALVE	0+06	
1/2" HB	0+75	
8x6 FHT	2+62	
6" VALVE	2+62	
1/2" HB	3+10	
1/2" HB	4+05	
1/2" HB	6+08	
1/2" HB	7+14	
6x6 FHT	9+18	
6" VALVE	9+18	
6" CAP	9+23	
8" VALVE	0+54	
8x8 TEE	0+54	
8" VALVE	5+54	
8x8 TEE	5+54	
8x6 REDUC.	5+57	

PLAN  
SCALE: 1"=50'

DEPARTMENT OF PUBLIC WORKS HOWARD COUNTY, MARYLAND James P. ... 11/22/88 DIRECTOR OF PUBLIC WORKS DATE Robert ... 11-17-88 CHIEF, BUREAU OF UTILITIES DATE	KIDDE CONSULTANTS INC. ENGINEERS, PLANNERS & SURVEYORS 1100 WEST STREET / SUITE 100 LAUREL, MD. 20707 (301) 792-8086 (301) 953-1821 JOHN E.C. PATMORE MD. PE. No. 8978		DES: D.C.W.				LOCATION MAP 8" & 6" WATER PLAN VIEW CONTRACT NO. 24-1835D	CORRIDOR CONDOMINIUM LIMITED PARTNERSHIP TAX MAP 48 PARCEL 15 6th ELECTION DISTRICT HOWARD COUNTY, MD.	SCALE AS SHOWN SHEET 2 OF 3
			DRN: E.M.M. CHK: D.C.W. DATE: 9-88	BY: NO. REVISION DATE	600' SCALE MAP NO. BLOCK NO.				

AS-BUILT AUGUST 31, 1989

220  
215  
210  
205  
200  
195  
190  
185  
180  
175  
170  
165  
160  
155  
150



NOTE: REMOVE UNSUITABLE MATERIAL AS NECESSARY AND REPLACE WITH BANK RUN GRAVEL TO PROVIDE FIRM BEARING BENEATH STORM DRAIN.

PROFILE 8" & 6" WATER  
SCALE: VERT. 1" = 5'  
HORZ. 1" = 50'

BRUNING 44-132 69150

DEPARTMENT OF PUBLIC WORKS  
HOWARD COUNTY, MARYLAND

*James J. ...* 11/22/88  
DIRECTOR OF PUBLIC WORKS  
*Robert ...* 11-17-88  
CHIEF, BUREAU OF UTILITIES  
*William ...* 11/22/88  
CHIEF, BUREAU OF ENGINEERING  
*John ...* 11/22/88  
CHIEF, LAND DEVELOPMENT DIV.

KIDDE CONSULTANTS INC.  
ENGINEERS, PLANNERS & SURVEYORS  
1100 WEST STREET / SUITE 100  
LAUREL, MD. 20707  
(301) 792-8086 (301) 953-1821  
JOHN E.C. PATMORE MD. PE. No. 8978



DES: R.T.T.	JMM	1	LOWERED WATER MAIN & PROP. GRADE	8/18/89
DRN: R.T.T.				
CHK: D.C.W.				
DATE:	BY	NO.	REVISION	DATE

PROFILE OF  
8" & 6" WATER  
CONTRACT NO. 24-1835D

CORRIDOR CONDOMINIUM  
LIMITED PARTNERSHIP  
TAX MAP 48 PARCEL 15  
6th ELECTION DISTRICT  
HOWARD COUNTY, MD.

SCALE AS SHOWN  
SHEET 3 OF 3

AS-BUILT August 31, 1989