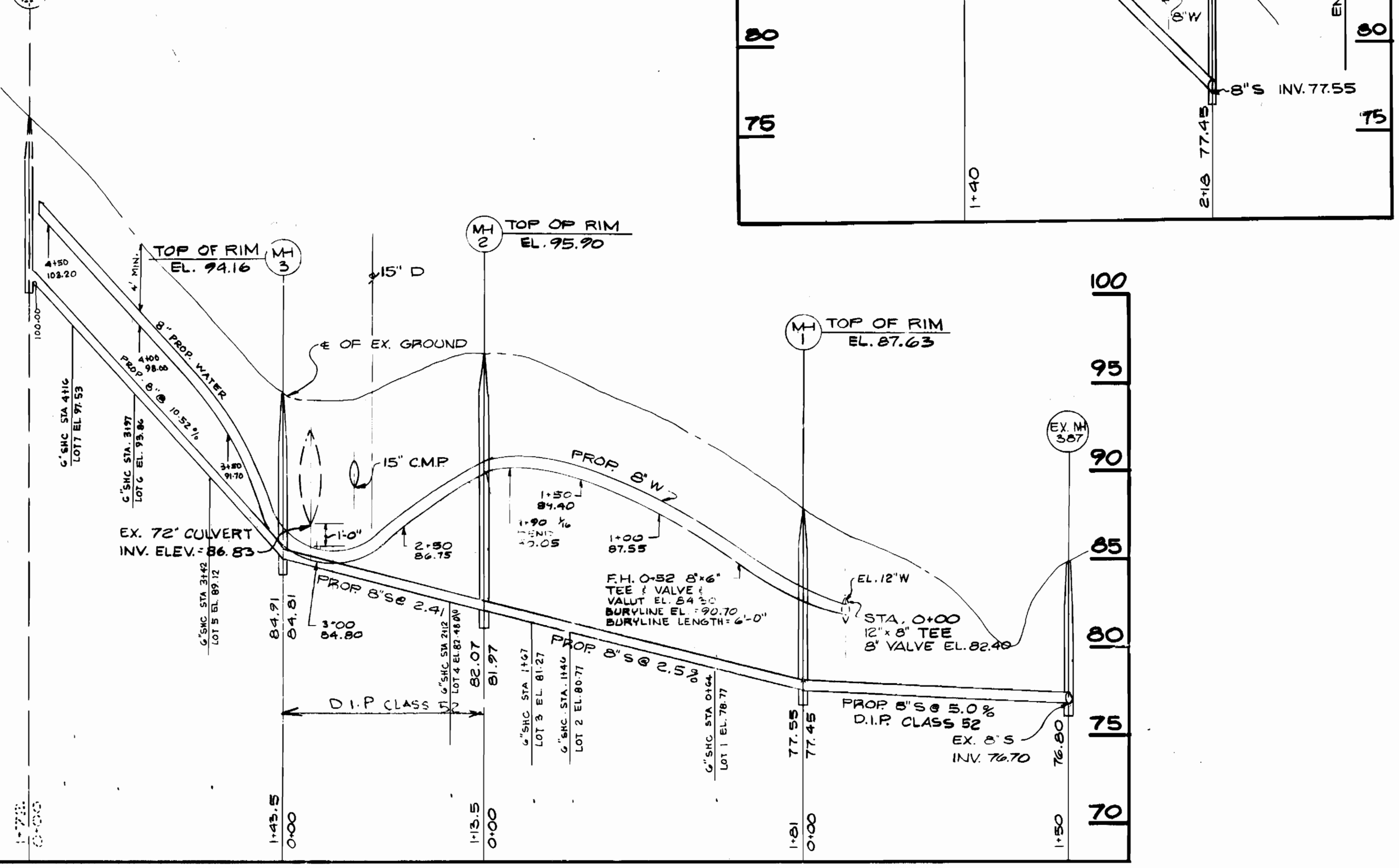
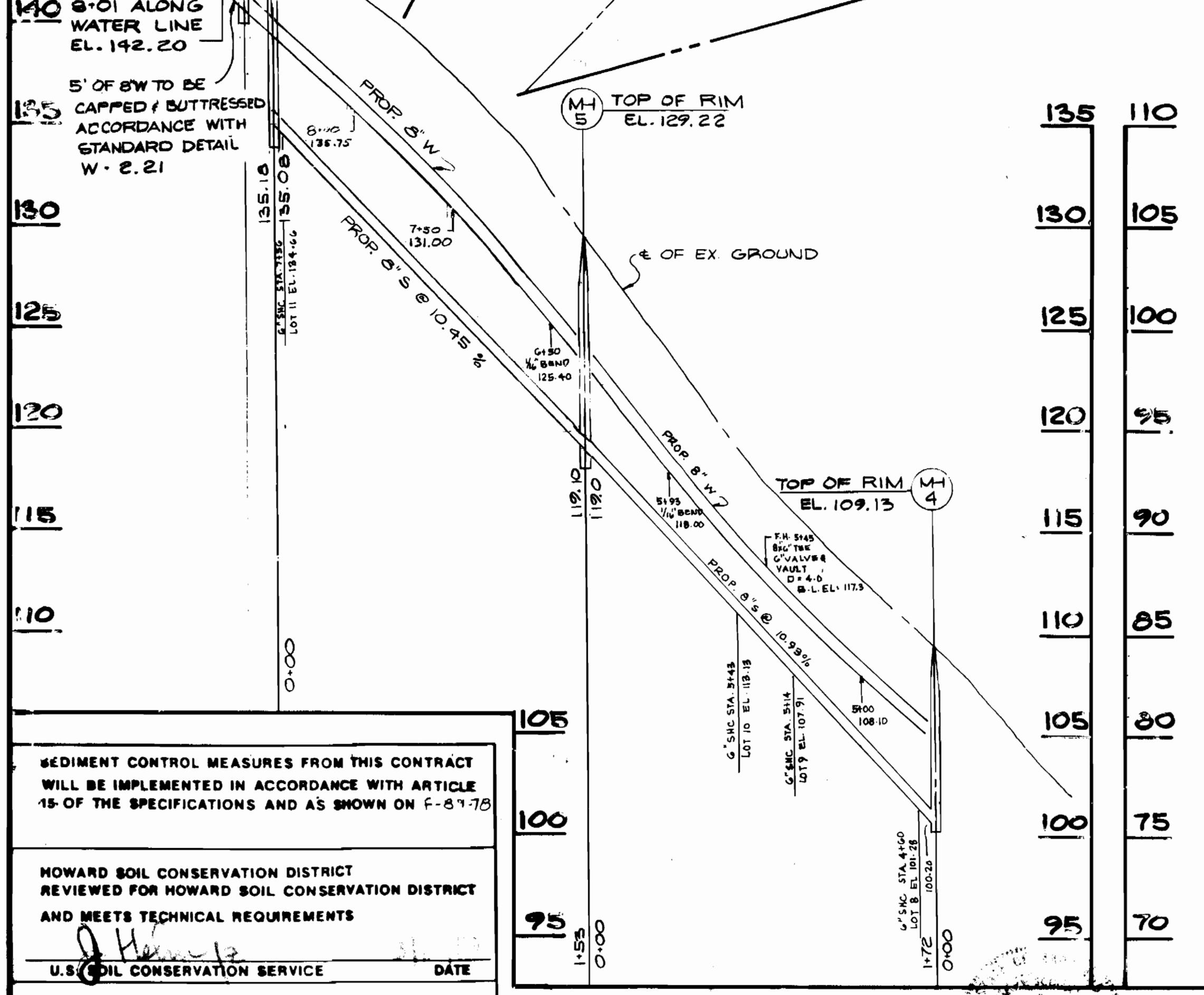
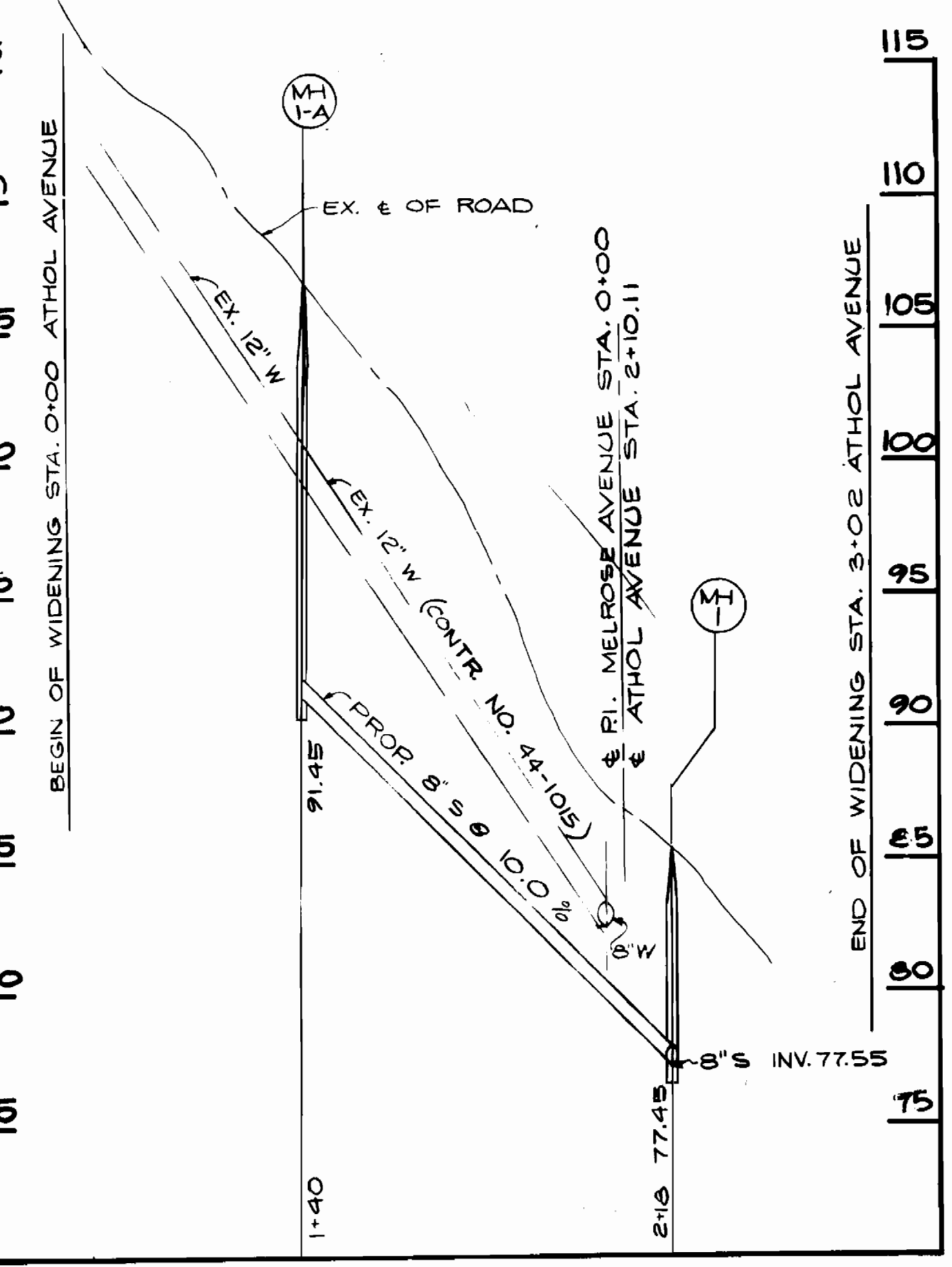
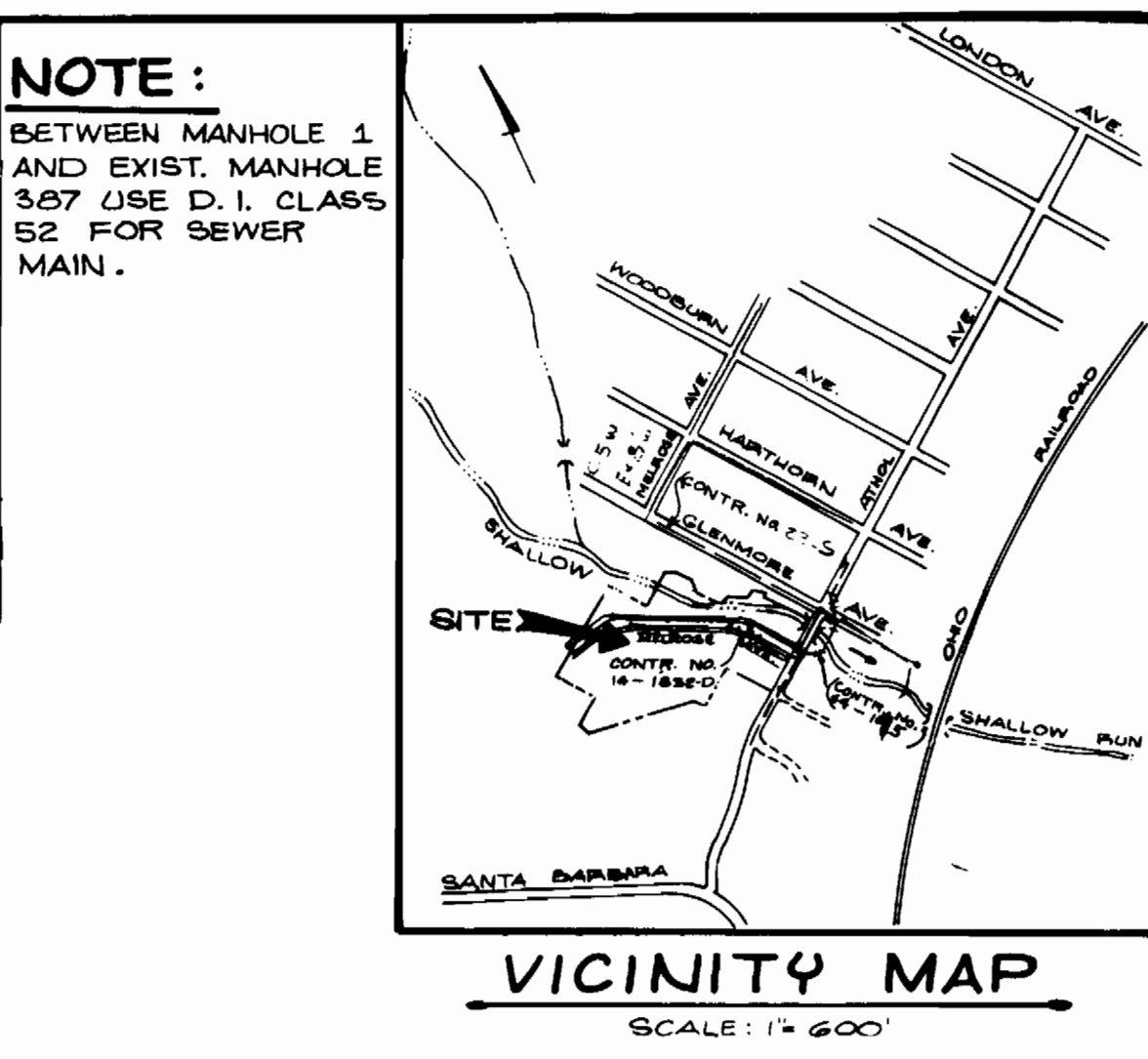


RESIDENTIAL		QUANTITIES	
ITEM	EST'D	AS BUILT	MATERIAL/SUPPLIER
8" S	267 L.F.		
6" W	702 L.F.		
F.H.C.	2		
6" S.H.C.	394 L.F.		
1" W.H.C.	76 L.F.		
3/4" W.H.C.	64 L.F.		
S.M.H.	7		
AIR RELEASE	1		
8" S DIP	285 L.F.		



- ### GENERAL NOTES
- APPROXIMATE LOCATION OF EXISTING MAINS ARE SHOWN. THE CONTRACTOR SHALL TAKE ALL NECESSARY PRECAUTIONS TO PROTECT EXISTING MAINS AND SERVICE AND MAINTAIN UNINTERRUPTED SUPPLY. ANY DAMAGE INCURRED SHALL BE REPAIRED IMMEDIATELY TO THE SATISFACTION OF THE ENGINEER AT THE CONTRACTOR'S EXPENSE.
  - ALL HORIZONTAL CONTROLS ARE BASED ON MARYLAND STATE COORDINATES.
  - ALL VERTICAL CONTROLS ARE BASED ON U.S.G.S. DATA.
  - ALL PIPE ELEVATION SHOWN ARE INVERT ELEVATIONS.
  - CLEAR ALL UTILITIES BY A MINIMUM OF 6".
  - FOR DETAILS NOT SHOWN ON THE DRAWINGS AND FOR MATERIALS AND CONSTRUCTION METHODS, USE HOWARD COUNTY DESIGN MANUAL, VOLUME II, STANDARD SPECIFICATIONS AND DETAILS FOR CONSTRUCTION. THE CONTRACTOR SHALL HAVE A COPY OF VOLUME II ON THE JOB.
  - WHERE TEST PITS HAVE BEEN MADE ON EXISTING UTILITIES, THEY ARE NOTED BY THE SYMBOL AT THE LOCATION OF THE TEST PIT. A NOTE OR NOTES CONTAINING THE RESULTS OF THE TEST PIT ON PITS IS INCLUDED ON THE DRAWINGS. EXISTING UTILITIES IN THE VICINITY OF THE PROPOSED WORK FOR WHICH TEST PITS HAVE NOT BEEN DUG SHALL BE VERIFIED BY THE CONTRACTOR TO HIS OWN SATISFACTION. ANY DAMAGE TO EXISTING FACILITIES DUE TO THE CONTRACTOR'S NEGLIGENCE SHALL BE REPAIRED AT THE CONTRACTOR'S EXPENSE.
  - CONTRACTOR SHALL NOTIFY THE FOLLOWING UTILITIES OR AGENCIES AT LEAST FIVE WORKING DAYS BEFORE STARTING WORK SHOWN ON THESE PLANS:
    - STATE HIGHWAY ADMINISTRATION: 531-5533
    - BALTIMORE GAS & ELECTRIC CO. - CONTRACTOR SERVICES: 561.2585
    - BALTIMORE GAS & ELECTRIC CO. - UNDERGROUND DAMAGE CONTROL: 234-5621
    - BALTIMORE GAS & ELECTRIC CO. - TROUBLE SHOOTING: 278-9013
    - MISS UTILITY: 1-559-0100
    - COLONIAL PIPELINE COMPANY: 795-1390
    - BUREAU OF UTILITIES, HOWARD COUNTY DEPARTMENT OF PUBLIC WORKS: 772-2366
  - TREES AND SHRUBS ARE TO BE PROTECTED FROM DAMAGE TO MAXIMUM EXTENT. TREES AND SHRUBS LOCATED WITHIN THE CONSTRUCTION STRIP ARE NOT TO BE REMOVED OR DAMAGED BY THE CONTRACTOR.
  - CONTRACTOR SHALL REMOVE TREES, STUMPS AND ROOTS ALONG LINE OF EXCAVATION. PAYMENT FOR SUCH REMOVAL SHALL BE INCLUDED IN THE UNIT PRICE BID FOR CONSTRUCTION OF THE MAIN.
  - ALL WATER MAINS TO BE D.I.P CLASS 52 UNLESS OTHERWISE NOTED.
  - TOPS OF ALL WATER MAINS TO HAVE A MINIMUM OF 3.5' COVER UNLESS OTHERWISE NOTED.
  - VALVES ADJACENT TO TREES BE STRAPPED TO TREE.
  - ALL FITTINGS SHALL BE BUTTRESSED OR ANCHORED WITH CONCRETE IN ACCORDANCE WITH THE STANDARD DETAILS UNLESS OTHERWISE PROVIDED FOR ON THE DRAWINGS.
  - FIRE HYDRANTS SHALL BE SET TO THE BURY LINE ELEVATIONS SHOWN ON THE DRAWINGS. ALL FIRE HYDRANTS SHALL BE STRAPPED AND BUTTRESSED WITH CONCRETE IN ACCORDANCE WITH STANDARD DETAILS. SOIL AROUND THE FIRE SHALL BE COMPACTED IN ACCORDANCE WITH SECTION 1003 AND 1008 OF THE STANDARD SPECIFICATION.
  - THE CONTRACTOR SHALL NOT OPERATE ANY WATER MAINS VALVES ON EXISTING WATER SYSTEM.
  - WATER MAINS AND WATER HOUSE CONN. LINES MUST BE PLACED SO AS TO HAVE AT LEAST ONE FOOT SEPARATION FROM THE SEWER MAIN OR SEWER HOUSE CONNECTION AS THEY PASS ABOUT IT.
  - ALL SEWER MAINS SHALL BE C.S.P.P., R.C.S.P., V.C.P.P., A.C.P. CLASS 2400 OR P.V.C. UNLESS OTHERWISE NOTED.
  - THE CONTRACTOR SHALL PROVIDE A JOINT IN ALL SEWER MAINS WITHIN 2'-0" OF EXTERIOR MANHOLE WALL.
  - ALL MANHOLES SHALL BE 4'-0" INSIDE DIAMETER UNLESS OTHERWISE NOTED.
  - MANHOLES SHOWN SHALL BE 12" AND 16" WALLS FOR BRICK MANHOLES ONLY. MANHOLES LOCATED WITHIN PROPOSED ROADWAY SHALL HAVE STANDARD HEAVY TRAFFIC MANHOLE FRAME AND COVER. STANDARD DETAIL GS.51.

SEDIMENT CONTROL MEASURES FROM THIS CONTRACT WILL BE IMPLEMENTED IN ACCORDANCE WITH ARTICLE 15-OF THE SPECIFICATIONS AND AS SHOWN ON F-87-78

HOWARD SOIL CONSERVATION DISTRICT REVIEWED FOR HOWARD SOIL CONSERVATION DISTRICT AND MEETS TECHNICAL REQUIREMENTS

U.S. SOIL CONSERVATION SERVICE DATE

THIS PLAN IS APPROVED FOR SOIL EROSION AND SEDIMENT CONTROL BY THE HOWARD SOIL CONSERVATION DISTRICT

HOWARD SOIL CONSERVATION DISTRICT DATE

**PROFILES**  
SCALE: HORIZ. 1"=50'  
VERT. 1"=5'

- ALL WATER HOUSE CONN. ARE FOR INSIDE METER SETTING
- ALL D.I.P FITTINGS SHALL BE IN ACCORDANCE WITH A.W.W.A. SPECIFICATION C-153 DUCTILE IRON COMPACT FITTING, 3" THROUGH 12" FOR WATER AND OTHER LIQUIDS.

**DEPARTMENT OF PUBLIC WORKS**  
HOWARD COUNTY, MARYLAND

DIRECTOR OF PUBLIC WORKS DATE 4-5-89

CHIEF BUREAU OF ENGINEERING DATE 3/23/89

CHIEF BUREAU OF UTILITIES DATE 3-14-89

CHIEF LAND DEVELOPMENT DIVISION DATE

**LORIA, SEDGHI & ASSOCIATES, LTD**  
ENGINEERS PLANNERS SURVEYORS  
3217 CORPORATE COURT  
ELLCOTT CITY MD 21043  
(301)750-9003

DESIGN BY	T.R.		
DRAWN BY	T.R.		
CHECKED BY			
DATE	V.S.	WATER & SEWER ELEV.	11-15-89
BY	NO	REVISION	DATE

**PLAN AND PROFILES OF WATER & SEWER MAIN**  
CONTRACT NO. 14-1832-D

**HARWOOD PARK**  
1<sup>ST</sup> ELECTION DISTRICT, HOWARD COUNTY, MD  
TAX MAP 38 PARCEL 875 CONTRACT NO.

OWNER  
HAYS BUILDING CONTRACTORS  
3205 CORPORATE COURT  
ELLCOTT CITY, MD 21043

SCALE AS SHOWN  
SHEET 1 OF 1