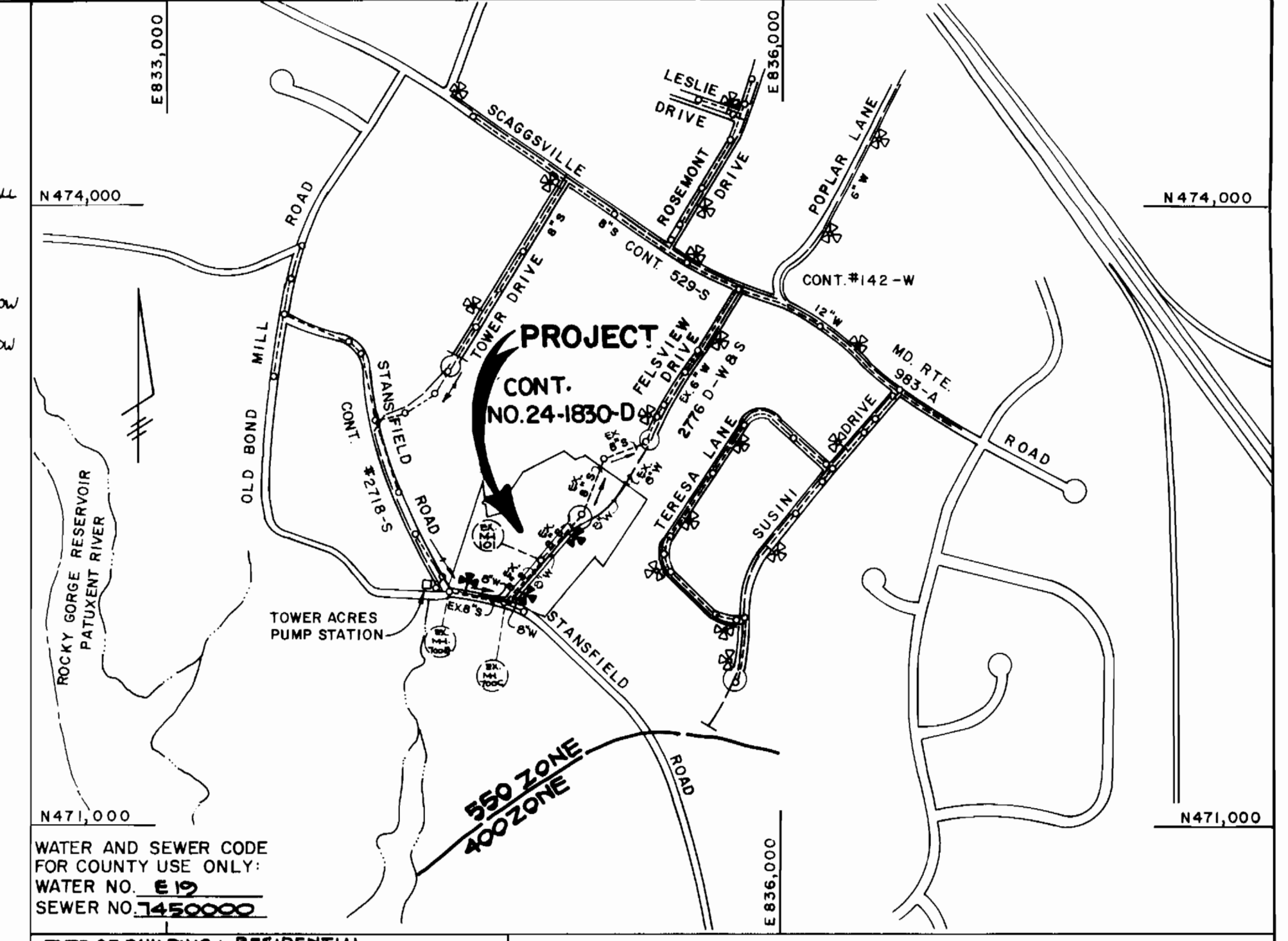


INVERT OF SEWER HOUSE CONNECTIONS AT PROPERTY LINE

STATION	LOT NO.	INVERT
EX.MH #700 A TO EX.MH #700 B		
0+52 LT. 24(0.00)	315.79	
EX.MH #700 B TO EX.MH #700 C		
0+65 LT. 20 B21	304.77	
EX.MH #700 C TO EX.MH #101		
0+74 LT. 22	322.69	
1+07 RT. 39	326.27	
1+72 LT. 23	331.78	
2+23 RT. 38	336.82	
EX.MH #101 TO EX.MH #102		
0+27 LT. 25	341.87	
0+45 RT. 37	342.49	
1+33 LT. 26	343.89	
1+48 RT. (DHC) 36	353.14	
2+13 LT. 27	345.42	
2+42 RT. (DHC) 35	355.64	
2+86 LT. 28	347.23	
3+17 RT. (DHC) 34	356.66	
@EX.MH #102 RT. (DC) 33	355.92	
EX.MH #102 TO EX.MH #103		
0+10 LT. 29	348.01	
1+32 RT. 32	348.99	
2+05 LT. 30	349.52	

NOTE: ALL 6" SH. IN BILL LILLY COURT ARE EXISTING & WERE CONSTRUCTED UNDER CONT. #24-1326-D



WATER AND SEWER CODE FOR COUNTY USE ONLY:

WATER NO. **E 19**
SEWER NO. **1450000**

TYPE OF BUILDING: RESIDENTIAL
NUMBER OF LOTS: 21 (19 BUILDABLE)
NO. OF WATER HOUSE CONNECTIONS: 19
NO. OF EX. SEWER HOUSE CONNECTIONS: 16
NO. OF SEWER HOUSE CONNECTIONS: 3
DRAINAGE AREA: LITTLE PATUXENT

VICINITY MAP
SCALE: 1" = 600'

QUANTITIES

ITEM	EST'D	AS-BUILT	SUPPLIER
6" SEWER	2781 f.		
8" WATER	1,148 f.		
FIRE HYDRANTS	3 EACH		
1" WHC	241 f.		
3/4" WHC	303 f.		
8" VALVES	4 EACH		
8"x6" SADDLE	2 EACH		
6" WATER	25 f.		
OUTSIDE METER SETTING	2 EACH		
AIR RELEASE MANHOLE	1 EACH		

MANHOLE TABULATION TABLE

NO.	C.R.D. STA.	DISTANCE	RIM ELEV.	SLOPE
101	2+54	8' LEFT	347.58	+100%
102	IN CUL-DESAC		366.91	*

* CONTRACTOR SHALL ADJUST EXISTING MANHOLES TO RIM ELEVATION SHOWN

- GENERAL NOTES**
- APPROXIMATE LOCATION OF EXISTING MAINS ARE SHOWN. THE CONTRACTOR SHALL TAKE ALL NECESSARY PRECAUTIONS TO PROTECT EXISTING MAINS AND SERVICES AND MAINTAIN UNINTERRUPTED SUPPLY. ANY DAMAGE INCURRED SHALL BE REPAIRED IMMEDIATELY TO THE SATISFACTION OF THE ENGINEER AT THE CONTRACTOR'S EXPENSE.
 - ALL HORIZONTAL CONTROLS ARE BASED ON MARYLAND STATE COORDINATES.
 - ALL VERTICAL CONTROLS ARE BASED ON U.S.G.S. DATUM.
 - ALL PIPE ELEVATIONS SHOWN ARE INVERT ELEVATIONS.
 - CLEAR ALL UTILITIES BY A MINIMUM OF 6".
 - FOR DETAILS NOT SHOWN ON THE DRAWINGS, AND FOR MATERIALS AND CONSTRUCTION METHODS, USE HOWARD COUNTY DESIGN MANUAL, VOLUME IV, STANDARD SPECIFICATIONS AND DETAILS FOR CONSTRUCTION. THE CONTRACTOR SHALL HAVE A COPY OF VOLUME IV ON THE JOB.
 - WHERE TEST PITS HAVE BEEN MADE ON EXISTING UTILITIES, THEY ARE NOTED BY THE SYMBOL AT THE LOCATION OF THE TEST PIT. A NOTE OR NOTES CONTAINING THE RESULTS OF THE TEST PIT OR PITS IS INCLUDED ON THE DRAWINGS. EXISTING UTILITIES IN THE VICINITY OF THE PROPOSED WORK FOR WHICH TEST PITS HAVE NOT BEEN DUG SHALL BE VERIFIED BY THE CONTRACTOR TO HIS OWN SATISFACTION. ANY DAMAGE TO EXISTING FACILITIES DUE TO THE CONTRACTOR'S NEGLIGENCE SHALL BE REPAIRED AT THE CONTRACTOR'S EXPENSE.
 - CONTRACTOR SHALL NOTIFY THE FOLLOWING UTILITIES OR AGENCIES AT LEAST FIVE WORKING DAYS BEFORE STARTING WORK SHOWN ON THESE PLANS:
 - C & P TELEPHONE COMPANY - 1-800-257-7777
 - STATE HIGHWAY ADMINISTRATION - 531-5533
 - BALTIMORE GAS & ELECTRIC CO. - CONTRACTOR SERVICES 850-4620
 - BALTIMORE GAS & ELECTRIC CO. - UNDER GROUND DAMAGE CONTROL-859-9004
 - BALTIMORE GAS & ELECTRIC CO. - TROUBLE SHOOTING-298-9001
 - MISS UTILITY-1-559-0100
 - COLONIAL PIPELINE CO.-795-1390
 - BUREAU OF UTILITIES, HOWARD COUNTY DEPARTMENT OF PUBLIC WORKS-992-2366
 - TREES AND SHRUBS ARE TO BE PROTECTED FROM DAMAGE TO MAXIMUM EXTENT. TREES AND SHRUBS LOCATED WITHIN THE CONSTRUCTION STRIP ARE NOT TO BE REMOVED OR DAMAGED BY THE CONTRACTOR.
 - CONTRACTOR SHALL REMOVE TREE, STUMPS AND ROOTS ALONG THE LINE OF EXCAVATION. PAYMENT FOR SUCH REMOVAL SHALL BE INCLUDED IN THE UNIT PRICE BID FOR CONSTRUCTION OF THE MAIN.
 - ALL SEWER MAINS SHALL BE C.S.P., R.C.S.P., V.C.P.X., A.C.P. CLASS 2400 OR P.V.C. UNLESS OTHERWISE NOTED.
 - THE CONTRACTOR SHALL PROVIDE A JOINT IN ALL SEWER MAINS WITHIN 2'-0" OF EXTERIOR MANHOLE WALL.
 - ALL MANHOLES SHALL BE 4'-0" INSIDE DIAMETER UNLESS OTHERWISE NOTED.
 - T.B. DENOTES TEST BORING.
 - MANHOLES SHOWN WITH 12" AND 16" WALLS ARE FOR BRICK MANHOLES ONLY.
 - MANHOLES DESIGNATED W.T. IN PLAN AND PROFILE SHALL HAVE WATERTIGHT FRAME AND COVERS, STANDARD DETAIL G.5.52. WHERE WATERTIGHT MANHOLE FRAME AND COVER IS USED, SET TOP OF FRAME 1'-6" ABOVE FINISHED GRADE UNLESS OTHERWISE NOTED ON THE DRAWINGS.
 - HOUSE(S) WITH THE SYMBOL "C.N.S." INDICATES THAT THE CELLAR CAN NOT BE SERVED.
 - ALL WATER MAINS TO BE D.I.P., CLASS 52 UNLESS OTHERWISE NOTED.
 - TOPS OF ALL WATER MAINS TO HAVE A MINIMUM OF 3-1/2" COVER UNLESS OTHERWISE NOTED.
 - VALVES ADJACENT TO TEES SHALL BE STRAPPED TO TEES.
 - ALL FITTINGS SHALL BE BUTTRESSED OR ANCHORED WITH CONCRETE IN ACCORDANCE WITH THE STANDARD DETAILS UNLESS OTHERWISE PROVIDED FOR ON THE DRAWINGS.
 - FIRE HYDRANTS SHALL BE SET TO THE BURY LINE ELEVATIONS SHOWN ON THE DRAWINGS. ALL FIRE HYDRANTS SHALL BE STRAPPED AND BUTTRESSED WITH CONCRETE IN ACCORDANCE WITH STANDARD DETAILS SOIL AROUND THE FIRE HYDRANT SHALL BE COMPACTED IN ACCORDANCE WITH SECTION 1003 OF THE STANDARD SPECIFICATIONS.
 - THE CONTRACTOR SHALL NOT OPERATE ANY WATER MAIN VALVES ON THE EXISTING WATER SYSTEM.
 - ALL WATER HOUSE CONNECTIONS SHALL BE FOR INSIDE METER SETTING, UNLESS OTHERWISE NOTED ON THE PLANS OR IN THE SPECIFICATIONS.
 - ALL D.I.P. FITTINGS SHALL BE IN ACCORDANCE WITH AWWA SPECIFICATION C-153: DUCTILE IRON COMPACT FITTINGS, 3-INCH THROUGH 12-INCH FOR WATER & OTHER LIQUIDS.

SEDIMENT CONTROL MEASURES FOR THIS CONTRACT WILL BE IMPLEMENTED IN ACCORDANCE WITH SECTION 219 OF THE HOWARD COUNTY DESIGN MANUAL AND STANDARDS AND SPECIFICATIONS FOR SOIL EROSION AND SEDIMENT CONTROL IN DEVELOPING AREAS AND ALSO AS SHOWN ON THE GRADING AND SEDIMENT CONTROL PLAN F 88-233

REVIEWED FOR HOWARD COUNTY SOIL CONSERVATION DISTRICT AND MEETS TECHNICAL REQUIREMENTS.

J. Helms
US SOIL CONSERVATION SERVICE DATE 12/19/88

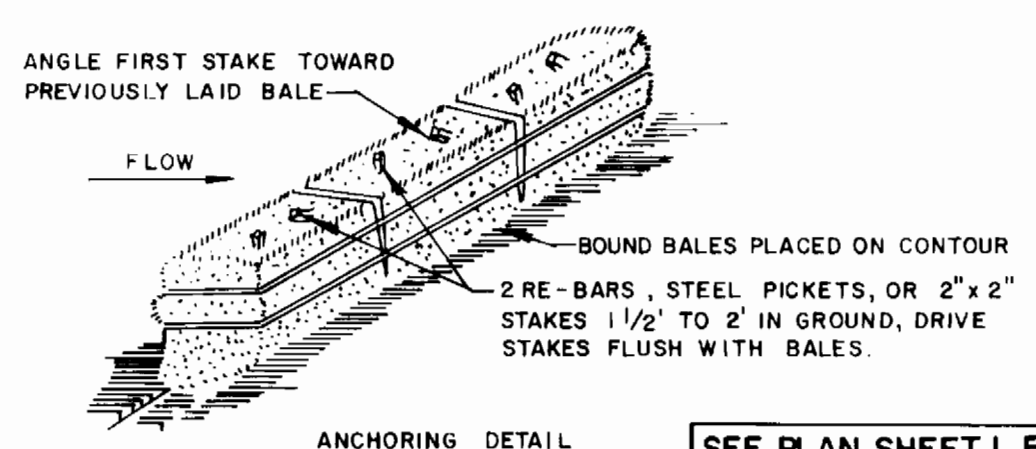
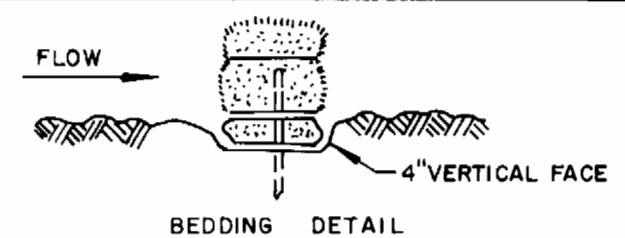
THIS DEVELOPMENT PLAN IS APPROVED FOR EROSION AND SEDIMENT CONTROL BY THE HOWARD SOIL CONSERVATION DISTRICT.

APPROVED
Thomas J. Fisher
HOWARD SOIL CONSERVATION DISTRICT DATE 12-16-88

PLAN REFERENCE NUMBERS
P 88-02
F 88-233

PLAN
SCALE: 1" = 50'

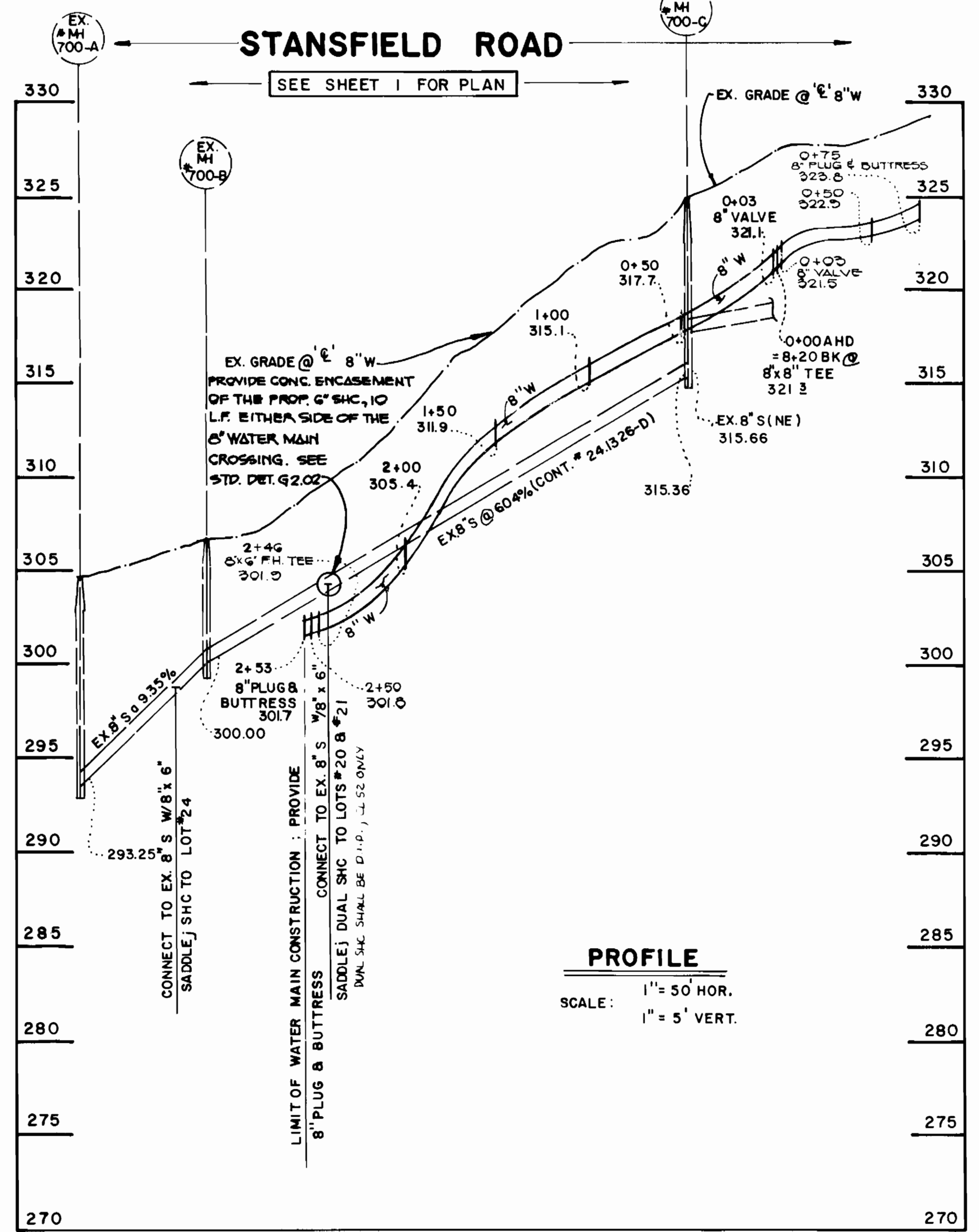
DEPARTMENT OF PUBLIC WORKS HOWARD COUNTY, MARYLAND <i>James J. ...</i> DIRECTOR OF PUBLIC WORKS DATE 12/20/88 <i>John ...</i> CHIEF, BUREAU OF UTILITIES DATE 12-14-88	FISHER, COLLINS, AND CARTER, INC. #9757 CONSULTING ENGINEERS AND LAND SURVEYORS 8388 COURT AVENUE ELLICOTT CITY, MARYLAND 21043 <i>Terrell A. Fisher</i> TERRELL A. FISHER DATE 12/15/88	DES: J. O. DRN: J. O. CHK: P. W.K. DATE: 12/15/88	S.H. ① BY NO. ADD SHC AND NOTES ON SHC CHART REVISION DATE 12/23/88	PLAN WATER AND SEWER MAINS 600' SCALE MAP NO. 46 BLOCK NO.	LILLY'S ADDITION TO LAKEVIEW SECTION 3 CONTRACT NO. 24-1830-D SIXTH ELECTION DISTRICT HOWARD COUNTY, MARYLAND SCALE AS SHOWN SHEET 1 OF 2
		CONTRACT NO. 24-1830-D LILLY'S ADDITION TO LAKEVIEW SECTION 3 WATER AND SEWER EXTENSIONS HOWARD COUNTY, MARYLAND			



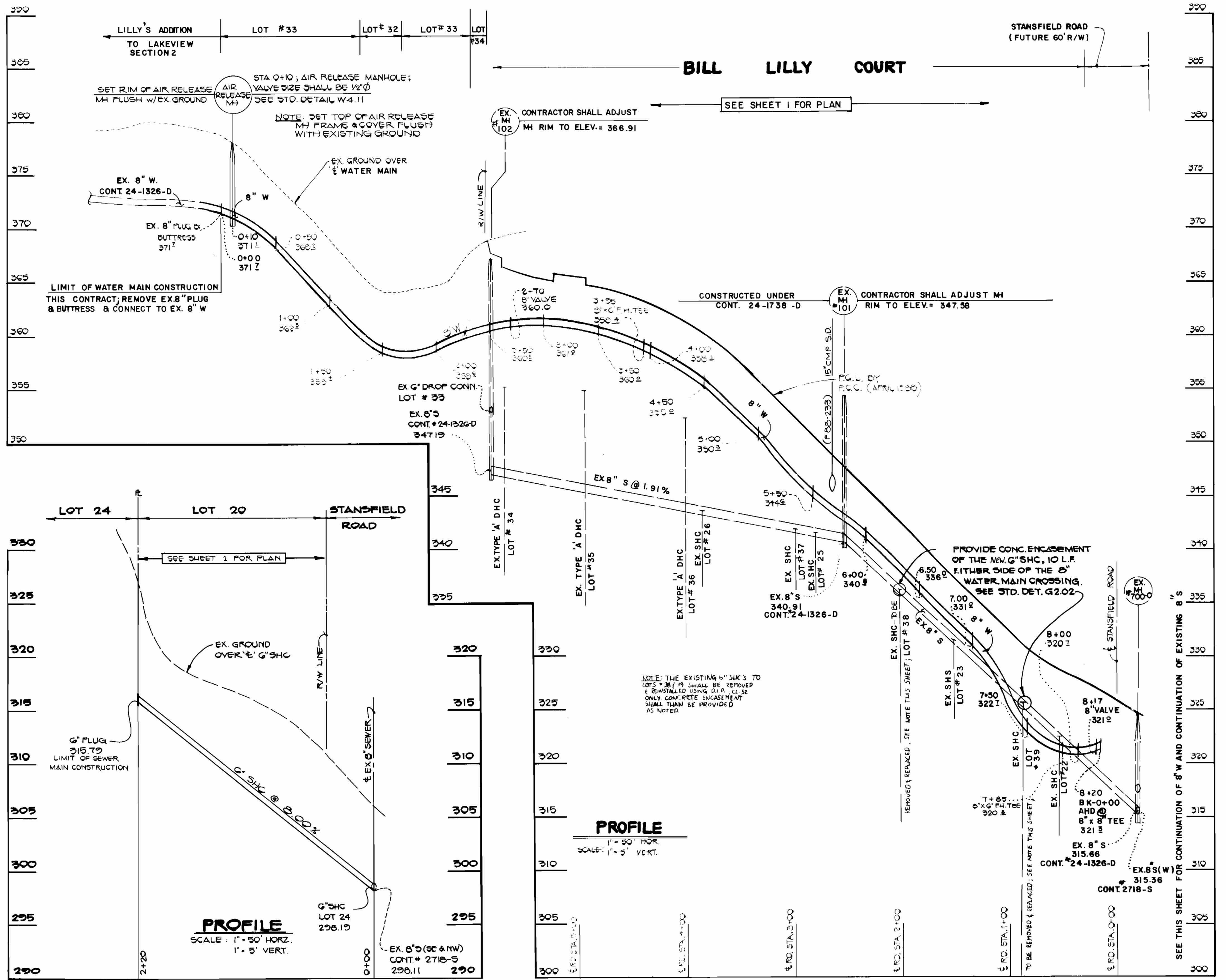
STRAW BALE DIKE

1. BALES SHALL BE PLACED AT THE TOE OF A SLOPE OR ON THE CONTOUR AND IN A ROW WITH ENDS TIGHTLY ABUTTING THE ADJACENT BALES.
2. EACH BALE SHALL BE EMBEDDED IN THE SOIL A MINIMUM OF 4 INCHES, AND PLACED SO THE BINDINGS ARE HORIZONTAL.
3. BALES SHALL BE SECURELY ANCHORED IN PLACE BY EITHER TWO STAKES OR RE-BARS DRIVEN THROUGH THE BALE. THE FIRST STAKE IN EACH BALE SHALL BE DRIVEN TOWARD THE PREVIOUSLY LAID BALE AT AN ANGLE TO FORCE THE BALES TOGETHER. STAKES SHALL BE DRIVEN FLUSH WITH THE BALE.
4. INSPECTION SHALL BE FREQUENT AND REPAIR REPLACEMENT SHALL BE MADE PROMPTLY AS NEEDED.
5. BALES SHALL BE REMOVED WHEN THEY HAVE SERVED THEIR USEFULNESS SO AS NOT TO BLOCK OR IMPEDE STORM FLOW OR DRAINAGE.

SEE PLAN SHEET 1 FOR LOCATION OF STRAW BALE DIKES



PROFILE
SCALE: 1" = 50' HOR.
1" = 5' VERT.



PROFILE
SCALE: 1" = 50' HOR.
1" = 5' VERT.

PROFILE
SCALE: 1" = 50' HOR.
1" = 5' VERT.

6" S/C TO LOT 24

DEPARTMENT OF PUBLIC WORKS
HOWARD COUNTY, MARYLAND

FISHER, COLLINS, AND CARTER, INC.
CONSULTING ENGINEERS AND LAND SURVEYORS
8388 COURT AVENUE
ELLCOTT CITY, MARYLAND 21043

#9757

DES: J.O.					
DRN: J.O.					
CHK: P.W.K.					
DATE:	BY:	NO.	REVISION	DATE	

PROFILES
WATER AND SEWER MAINS

LILLY'S ADDITION TO LAKEVIEW
SECTION 3
CONTRACT NO. 24-1830-D
SIXTH ELECTION DISTRICT
HOWARD COUNTY, MARYLAND

SCALE AS SHOWN
SHEET 2 OF 2

CONTRACT NO. 24-1830-D
LILLY'S ADDITION TO LAKEVIEW
SECTION 3
WATER AND SEWER EXTENSIONS
HOWARD COUNTY, MARYLAND

BRUNING 44-132-0150

AS-BUILT 7/1/01