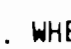
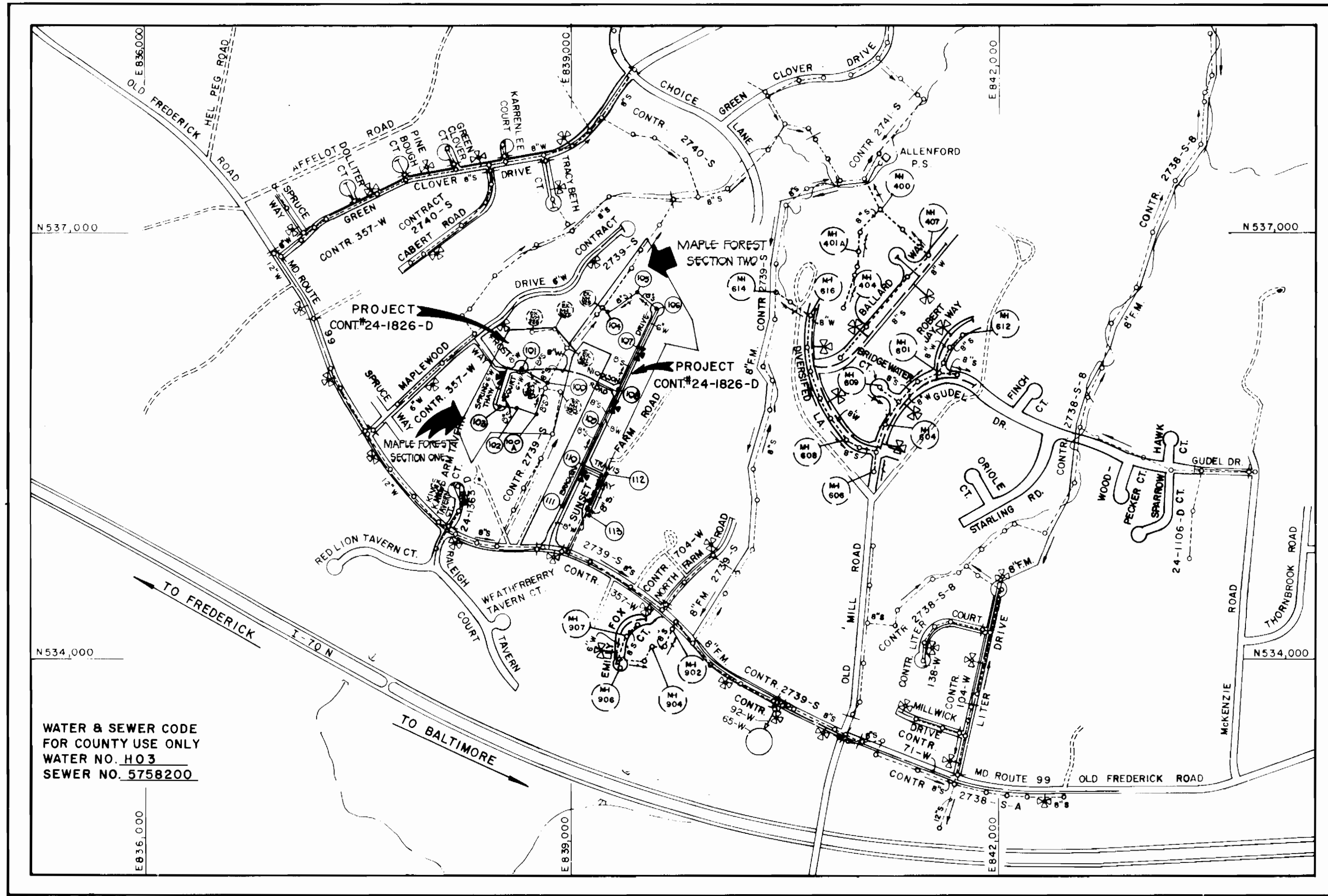


**GENERAL NOTES**

- APPROXIMATE LOCATION OF EXISTING MAINS ARE SHOWN. THE CONTRACTOR SHALL TAKE ALL NECESSARY PRECAUTIONS TO PROTECT EXISTING MAINS AND SERVICES AND MAINTAIN UNINTERRUPTED SUPPLY. ANY DAMAGE INCURRED SHALL BE REPAIRED IMMEDIATELY TO THE SATISFACTION OF THE ENGINEER AT THE CONTRACTOR'S EXPENSE.
- ALL HORIZONTAL CONTROLS ARE BASED ON MARYLAND STATE COORDINATES.
- ALL VERTICAL CONTROLS ARE BASED ON U.S.G.S. DATUM.
- ALL PIPE ELEVATIONS SHOWN ARE INVERT ELEVATIONS.
- CLEAR ALL UTILITIES BY A MINIMUM OF 6".
- FOR DETAILS NOT SHOWN ON THE DRAWINGS, AND FOR MATERIALS AND CONSTRUCTION METHODS, USE HOWARD COUNTY DESIGN MANUAL, VOLUME IV, STANDARD SPECIFICATIONS AND DETAILS FOR CONSTRUCTION. THE CONTRACTOR SHALL HAVE A COPY OF VOLUME IV ON THE JOB.
- WHERE TEST PITS HAVE BEEN MADE ON EXISTING UTILITIES, THEY ARE NOTED BY THE SYMBOL  AT THE LOCATION OF THE TEST PIT. A NOTE OR NOTES CONTAINING THE RESULTS OF THE TEST PIT OR PITS IS INCLUDED ON THE DRAWINGS. EXISTING UTILITIES IN THE VICINITY OF THE PROPOSED WORK FOR WHICH TEST PITS HAVE NOT BEEN DUG SHALL BE VERIFIED BY THE CONTRACTOR TO HIS OWN SATISFACTION. ANY DAMAGE TO EXISTING FACILITIES DUE TO THE CONTRACTOR'S NEGLIGENCE SHALL BE REPAIRED AT THE CONTRACTOR'S EXPENSE.
- CONTRACTOR SHALL NOTIFY THE FOLLOWING UTILITIES OR AGENCIES AT LEAST FIVE WORKING DAYS BEFORE STARTING WORK SHOWN ON THESE PLANS:  
 STATE HIGHWAY ADMINISTRATION - 531-5533  
 BALTIMORE GAS & ELECTRIC CO. - CONTRACTOR SERVICES: 850-4620  
 BALTIMORE GAS & ELECTRIC CO. UNDERGROUND DAMAGE CONTROL: 859-9004  
 BALTIMORE GAS & ELECTRIC CO. TROUBLE SHOOTING: 298-9001  
 MISS UTILITY: 1-559-0100  
 COLONIAL PIPELINE COMPANY: 795-1390  
 BUREAU OF UTILITIES, HOWARD COUNTY DEPARTMENT OF PUBLIC WORKS 992-2366  
 C & P TELEPHONE COMPANY: 1-800-257-7777
- TREES AND SHRUBS ARE TO BE PROTECTED FROM DAMAGE TO MAXIMUM EXTENT. TREES AND SHRUBS LOCATED WITHIN THE CONSTRUCTION STRIP ARE NOT TO BE REMOVED OR DAMAGED BY THE CONTRACTOR.
- CONTRACTOR SHALL REMOVE TREES, STUMPS AND ROOTS ALONG LINE OF EXCAVATION. PAYMENT FOR SUCH REMOVAL SHALL BE INCLUDED IN THE UNIT PRICE BID FOR CONSTRUCTION OF THE MAIN.
- ALL WATER MAINS TO BE D.I.P. CLASS 52 UNLESS OTHERWISE NOTED.
- TOPS OF ALL WATER MAINS TO HAVE A MINIMUM OF 3'-1/2' COVER UNLESS OTHERWISE NOTED.
- VALVES ADJACENT TO TEES SHALL BE STRAPPED TO TEES.
- ALL FITTINGS SHALL BE BUTTRESSED OR ANCHORED WITH CONCRETE IN ACCORDANCE WITH THE STANDARD DETAILS UNLESS OTHERWISE PROVIDED FOR ON THE DRAWINGS.
- FIRE HYDRANTS SHALL BE SET TO THE BURY LINE ELEVATIONS SHOWN ON THE DRAWINGS. ALL FIRE HYDRANTS SHALL BE STRAPPED AND BUTTRESSED WITH CONCRETE IN ACCORDANCE WITH STANDARD DETAILS. SOIL AROUND THE FIRE HYDRANT SHALL BE COMPACTED IN ACCORDANCE WITH SECTION 1003 AND 1008 OF THE STANDARD SPECIFICATIONS.
- THE CONTRACTOR SHALL NOT OPERATE ANY WATER MAIN VALVES ON THE EXISTING WATER SYSTEM.
- ALL WATER HOUSE CONNECTIONS SHALL BE FOR INSIDE METER SETTING, UNLESS OTHERWISE NOTED ON THE PLANS OR IN THE SPECIFICATIONS. (STD. DETAIL W.3.21).
- WATER MAINS AND WATER HOUSE CONNECTION LINES MUST BE PLACED SO AS TO HAVE AT LEAST ONE (1) FOOT SEPARATION FROM THE SEWER MAIN OR SEWER HOUSE CONNECTION AS THEY PASS ABOUT IT.
- MANHOLES DESIGNATED W.T. IN PLAN AND PROFILE SHALL HAVE WATERTIGHT FRAME AND COVERS STANDARD DETAIL 65.52 WHERE WATERTIGHT MANHOLE FRAME AND COVER IS USED, SET TOP OF FRAME 1'-6" ABOVE FINISHED GRADE UNLESS OTHERWISE NOTED ON THE DRAWINGS.
- ALL SEWER MAINS SHALL BE C.S.P.X., R.C.S.P., V.C.P.X., A.C.P. CLASS 2400 OR P.V.C. UNLESS OTHERWISE NOTED.
- THE CONTRACTOR SHALL PROVIDE A JOINT IN ALL SEWER MAINS WITHIN 2'-0" OF EXTERIOR MANHOLE WALL.
- ALL MANHOLES SHALL BE 4'-0" INSIDE DIAMETER UNLESS OTHERWISE NOTED.
- MANHOLES SHOWN WITH 12" AND 16" WALLS ARE FOR BRICK MANHOLES ONLY.
- MANHOLES LOCATED WITHIN PROPOSED ROADWAY SHALL HAVE STANDARD HEAVY TRAFFIC MANHOLE FRAME AND COVER, STANDARD DETAIL 65.51.
- ALL D.I.P. FITTINGS SHALL BE IN ACCORDANCE WITH AWWA SPECIFICATION C-153: DUCTILE IRON COMPACT FITTINGS, 3-INCH THROUGH 12-INCH FOR WATER & OTHER LIQUIDS.

QUANTITIES			
ITEM	EST'D	AS-BUILT	SUPPLIER
8" SEWER	2,006 L.F.	2025	AMERICAN MUNICIPAL CONTE
6" SEWER	1,540 L.F.	1487	AMERICAN MUNICIPAL CONTE
MANHOLES	15 EACH	15	ATLANTIC
8" WATER	3026 L.F.	3121	GRIFFIN
6" WATER	518 L.F.	520	" / "
4" WATER	52 L.F.	55	" / "
FIRE HYDRANTS	4 EACH	4	KENNEDY
1" WHC.	593 L.F.	652	HALSTEAD
3/4" WHC.	807 L.F.	985	" / "
8" VALVES	5 EACH	5	" / "
6" VALVES			
BLOW-OFFS	4 EACH	4	GRIFFIN
8"x6" REDUCERS	3 EACH	3	" / "
8" SEWER, D.I.P.	240 L.F.	240	" / "



TYPE OF BUILDING	RESIDENTIAL
NUMBER OF LOTS	52 (51 BUILDABLE)
NO. OF WATER HOUSE CONNECTIONS	52
NO. OF SEWER HOUSE CONNECTIONS	56
DRAINAGE AREA	LITTLE PATUXENT

VICINITY MAP  
SCALE: 1"=600'

TREATMENT PLANT: PATAPSCO WASTEWATER TREATMENT PLANT  
VIA THE ROUTE 108 PUMPING STATION.

# CONTRACT NO. 24-1826-D MAPLE FOREST SECTION 1 & SECTION 2 WATER AND SEWER MAIN EXTENSIONS HOWARD COUNTY, MARYLAND DEPARTMENT OF PUBLIC WORKS

SEDIMENT CONTROL MEASURES FOR THIS CONTRACT WILL BE IMPLEMENTED IN ACCORDANCE WITH SECTION 219 OF THE HOWARD COUNTY DESIGN MANUAL AND STANDARDS AND SPECIFICATIONS FOR SOIL EROSION AND SEDIMENT CONTROL IN DEVELOPING AREAS AND ALSO AS SHOWN ON THE GRADING AND SEDIMENT CONTROL PLAN F 88-263

REVIEWED FOR HOWARD COUNTY SOIL CONSERVATION DISTRICT AND MEETS TECHNICAL REQUIREMENTS

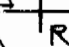
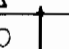
*James M. Helm* 9/7/88  
SOIL CONSERVATION SERVICE DATE

THIS DEVELOPMENT PLAN IS APPROVED FOR EROSION AND SEDIMENT CONTROL BY HOWARD SOIL CONSERVATION DISTRICT.

APPROVED:  
*Robert A. Fisher* 9/7/88  
HOWARD SOIL CONSERVATION DISTRICT DATE

PLAN REFERENCE NUMBERS:	
S 88-13	SECTION 1
P 88-39	
S 88-30	SECTION 2
P 88-52	
F 88-263 - SECTIONS 1 & 2	

CONTRACT NO. 24-1826-D  
MAPLE FOREST  
SECTION ONE & SECTION TWO  
WATER AND SEWER EXTENSIONS  
HOWARD COUNTY, MARYLAND

DEPARTMENT OF PUBLIC WORKS HOWARD COUNTY, MARYLAND  <i>James M. Helm</i> 9/7/88 DIRECTOR OF PUBLIC WORKS DATE  <i>Robert A. Fisher</i> 9/7/88 CHIEF, BUREAU OF ENGINEERING DATE  <i>Terrell A. Fisher</i> 9/18/88 CHIEF, LAND DEVELOPMENT DIVISION DATE	FISHER, COLLINS AND CARTER, INC. #9757 CONSULTING ENGINEERS AND LAND SURVEYORS 8388 COURT AVENUE ELLCOTT CITY, MARYLAND 21043  <i>Terrell A. Fisher</i> TERRELL A. FISHER	DES: G.W. P.W.K. DRN: J.O. G.W. CHK: P.W.K. DATE: 09/22/88 BY: NO REVISION:	G.W.  REVISE QUANTITIES TABLE 12-14-88 G.W.  REVISE QUANTITIES TABLE & INFO. BLOCK 11-21-88 REVISION:	TITLE SHEET  600 SCALE MAP NO. 17 BLOCK NO.	MAPLE FOREST SECTION ONE & SECTION TWO CONTRACT NO. 24-1826-D SECOND ELECTION DISTRICT HOWARD COUNTY, MARYLAND  SCALE AS SHOWN SHEET 1 OF 7
---	---	--	---	---	--

AS-BUILT 4/21/89

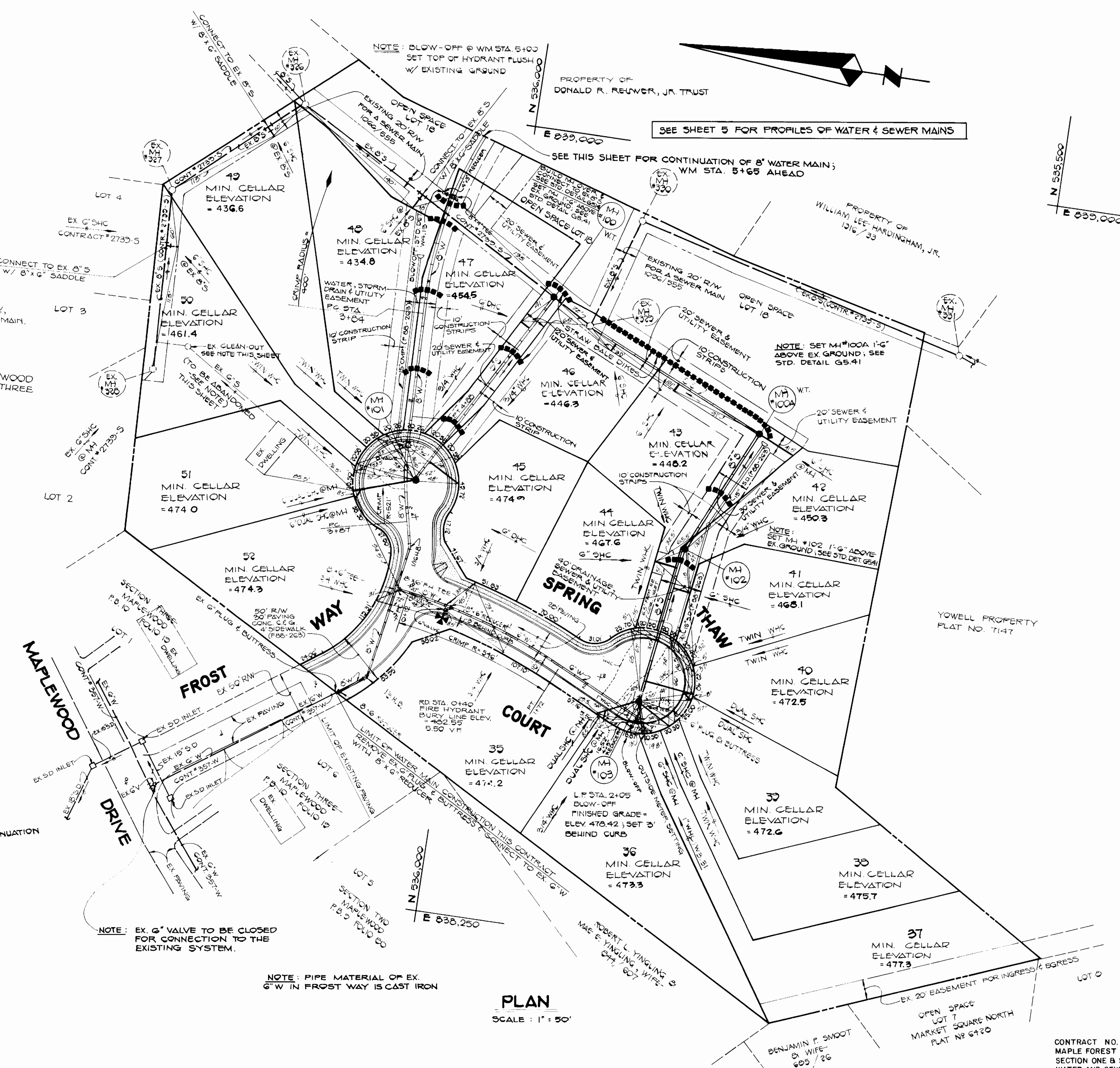
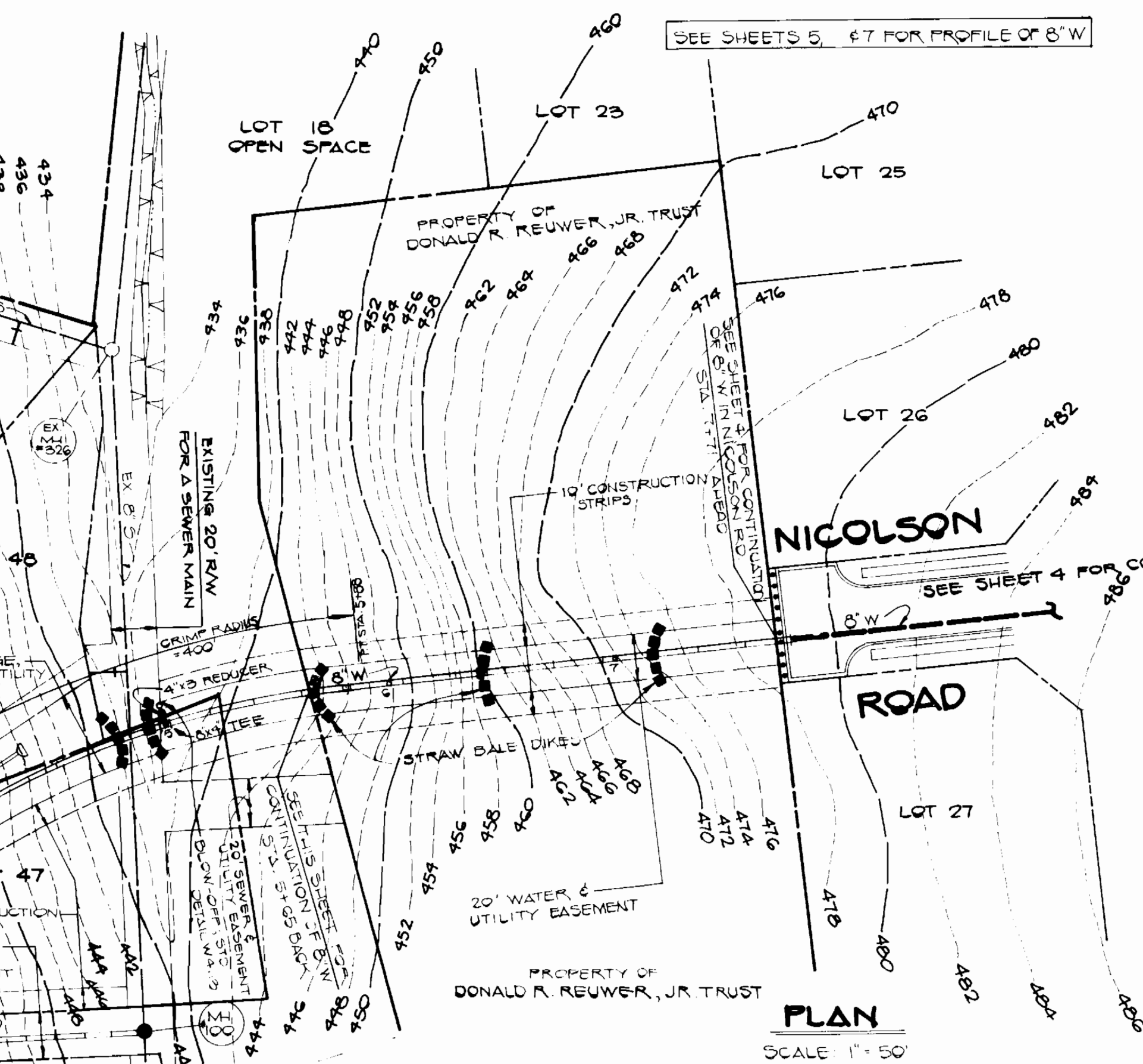


INVERT OF SEWER HOUSE CONNECTIONS AT PROPERTY LINE		
STATION	LOT	INVERT
MH #100 TO MH #101		
0+38 RT.	47 (DHC)	450.20
1+95 LT.	45 (DHC)	469.70
@MH 101 RT.	51 & 52	468.22
MH #102 TO MH #103		
0+20 RT.	44	463.92
0+40 LT.	41	463.54
1+30 LT.	39 & 40	466.84
@MH 103 RT.	35 & 36	467.41
@MH 103 LT.	38	467.37
@MH 103	37	467.21
EX. MH. 326 TO MH. 100		
1+40 RT.	48	429.16
EX. MH. 326 TO EX. MH. 327		
0+41 LT.	49	430.71
EX. MH. 327 TO EX. MH. 328		
0+53 LT.	50	455.90
EX. MH. 329 TO MH. 100A		
0+30 RT.	46	441.26
1+00 RT.	43	443.03
@MH 100 A	42	445.97

MANHOLE TABULATION			
NO.	RD. STATION	DISTANCE RIM	SLOPE
100	SET 1'-6" ABOVE EXISTING GROUND		SEE STD. DETAIL G5-41
100A	SET 1'-6" ABOVE EXISTING GROUND		
101	IN CUL-DE-SAC	400.6	FROST WAY
102	SET 1'-6" ABOVE EXISTING GROUND		SPRING THAW COURT
103	IN CUL-DE-SAC	477.3	

**NOTE RE EX. 6" SHC TO EX. DWELLING ON LOT #51**

THE EX. SHC TO THE EXISTING DWELLING ON LOT # 51 MUST REMAIN IN SERVICE WHILE THE SEWER MAINS & SERVICES UNDER THIS CONTRACT ARE BEING INSTALLED. UPON COMPLETION OF INSTALLATION OF THE SEWER MAINS, SUCCESSFUL TESTING & APPROVAL OF THE SEWER MAINS, THE EX. DWELLING ON LOT # 51 SHALL BE CONNECTED TO THE PROPOSED SYSTEM. THE EXISTING SHC SHALL THEN BE ABANDONED. THE CONTRACTOR SHALL REMOVE THE EX. CLEAN-OUT & THE EX. 6" SHC AS REQUIRED. ADDITIONALLY, THE CONTRACTOR SHALL PLUG THE EX. 6" SHC AT THE 6" X 6" TEE AT THE MAIN.



**PLAN**  
SCALE: 1" = 50'

DEPARTMENT OF PUBLIC WORKS  
HOWARD COUNTY, MARYLAND

FISHER, COLLINS AND CARTER, INC. # 9757  
CONSULTING ENGINEERS AND LAND SURVEYORS  
8388 COURT AVENUE  
ELLCOTT CITY, MARYLAND 21043

TERRELL A. FISHER  
DATE 08/22/08

DES: G.W.	
DRN: G.W.	
CHK: P.W.R.	
DATE 08/22/08	BY NO

REVISE PLAN AND SHC TABLE	11/21/08
DATE 08/22/08	BY NO

**PLAN**  
**WATER AND SEWER MAINS**

**MAPLE FOREST**  
SECTION ONE & SECTION TWO  
CONTRACT NO. 24-1826-D  
SECOND ELECTION DISTRICT  
HOWARD COUNTY, MARYLAND

SCALE AS SHOWN  
SHEET 2 OF 7

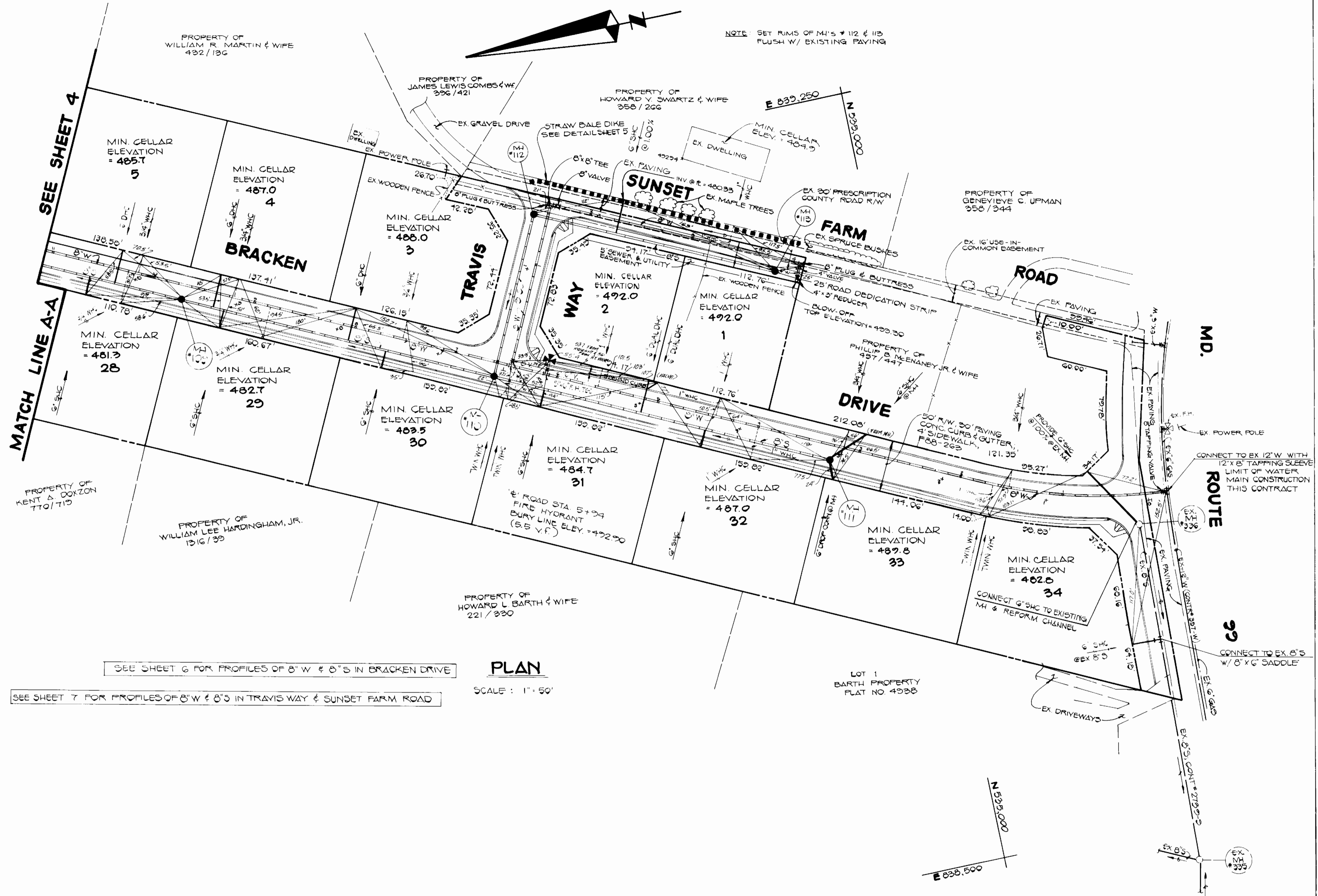
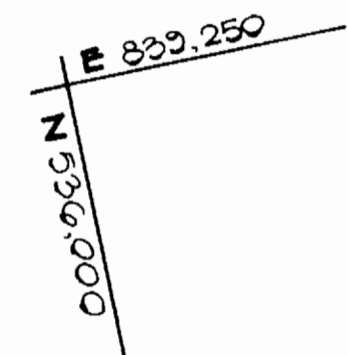
BRUNING 441 12-10-15

4/21/09



INVERT OF SEWER HOUSE CONNECTIONS @ PROPERTY LINE		
STATION	LOT	INVERT
MH # 108 TO MH # 109		
1+77 RT.	25	476.21
2+04 LT.	5 (DHC)	480.14
MH # 109 TO MH # 110		
0+32 LT.	4 (DHC)	481.64
0+42 RT.	29	477.30
1+67 LT.	3 (DHC)	482.64
2+05 RT.	30	478.12
MH # 110 TO MH # 111		
0+50 RT.	31	479.39
1+16 LT.	1 & 2 (DHC)	486.64
2+07 RT.	32	481.75
@MH # 111 RT.	33	486.86
@MH # 111 LT. EX. M <sup>EN</sup> . LOT		484.27
EX. MH # 335 TO EX. MH # 336		
2+15 LT.	34	477.48
@EX. MH # 336 FUT. M <sup>EN</sup> . LOT		480.91

MANHOLE		TABULATION		
NO.	Q. RD. STATION	DISTANCE	RIM	SLOPE
109	9+52	7' LT.	488.57	-1.09%
110	6+42	7' LT.	491.95	-1.09%
111	3+09	7' LT.	497.65	+0.80%
112	SET RIM FLUSH W/ EXISTING PAVING			
113	SET RIM FLUSH W/ EXISTING PAVING			



SEE SHEET 6 FOR PROFILES OF 8" W & 8" S IN BRACKEN DRIVE  
 SEE SHEET 7 FOR PROFILES OF 8" W & 8" S IN TRAVIS WAY & SUNSET FARM ROAD

**PLAN**  
 SCALE: 1" = 50'

DEPARTMENT OF PUBLIC WORKS  
 HOWARD COUNTY, MARYLAND

FISHER, COLLINS AND CARTER, INC.  
 CONSULTING ENGINEERS AND LAND SURVEYORS  
 8388 COURT AVENUE  
 ELLICOTT CITY, MARYLAND 21043

#9757	15 JUN 86 W	DRN. G.W.	CHK. P.W.K.	GW	REVISE ALIGNMENT, MH # 112 TO MH # 113	12/14/85
				GW	REVISE PLAN AND S&C TABLE	11/21/86
				BY NO	REVISION	DATE
						6/20 SCALE MAP NO. 17 BLOCK NO.

**PLAN**  
**WATER AND SEWER MAINS**

**MAPLE FOREST**  
 SECTION ONE & SECTION TWO  
 CONTRACT NO. 24-1826-D  
 SECOND ELECTION DISTRICT  
 HOWARD COUNTY, MARYLAND

SCALE AS SHOWN  
 SHEET 3 OF 7

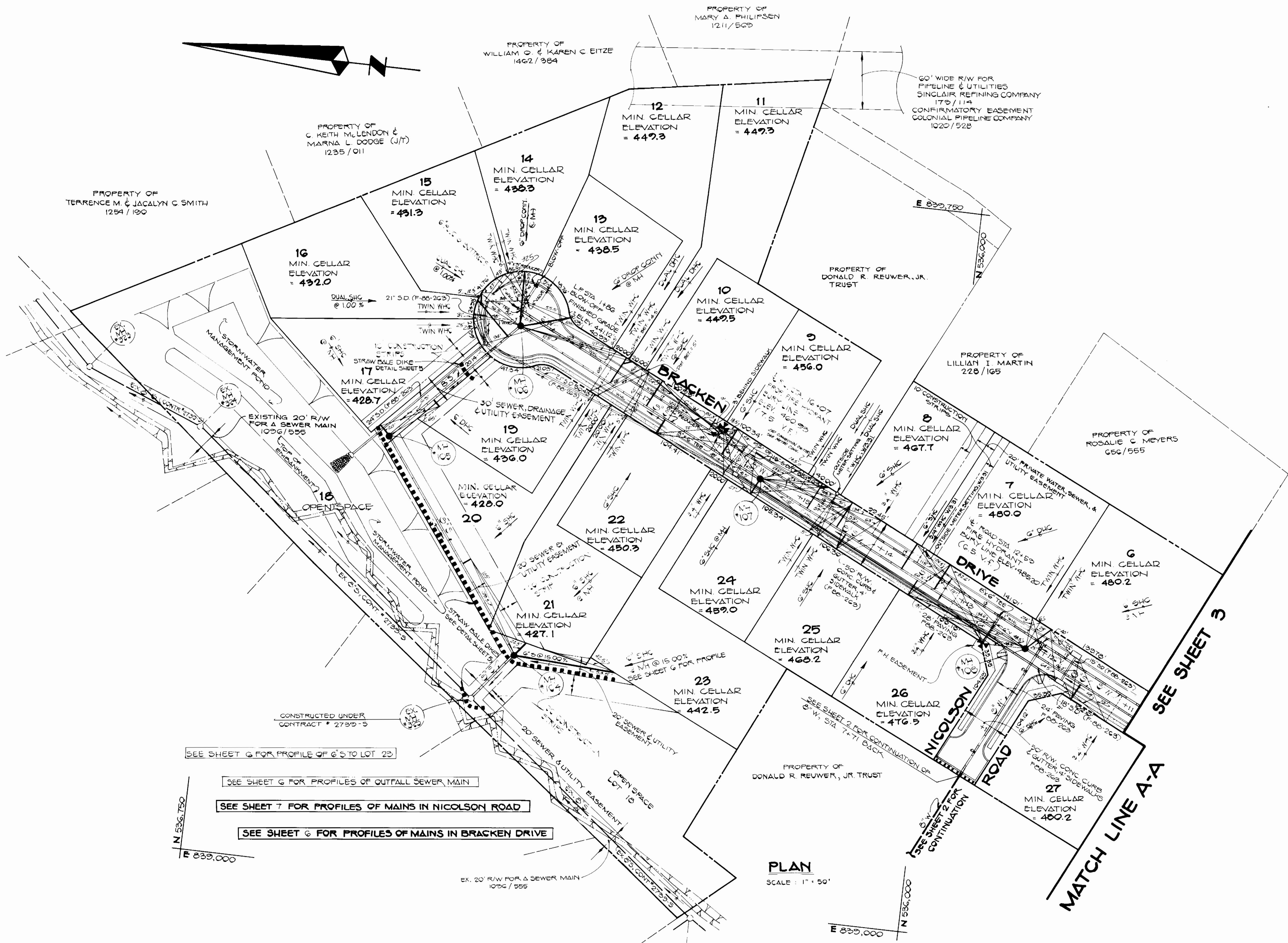
CONTRACT NO. 24-1826-D  
 MAPLE FOREST  
 SECTION ONE & SECTION TWO  
 WATER AND SEWER EXTENSIONS  
 HOWARD COUNTY, MARYLAND



INVERT OF SEWER HOUSE CONNECTIONS AT PROPERTY LINE		
STATION	LOT	INVERT
MH # 104 TO MH # 105		
@MH#104 RT.	23	437.70 (15%)
@MH#104 RT.	21	422.31
1+10 RT.	20	422.61
MH # 105 TO MH # 106		
@MH#105 LT.	17	423.47
0+60 RT.	19 (DHC)	430.70
1+61 LT.	15 & 16 (1%)	427.54 (1%)
MH # 106 TO MH # 107		
@MH#106 LT.	14 (D.C.)	433.12
@MH#106 LT.	13 (D.C.)	433.04
1+11 LT.	11 & 12	440.43
1+56 LT.	10	443.80
1+80 RT.	22	445.32
2+50 LT.	9	450.85
MH # 107 TO MH # 108		
@MH#107 RT.	24	454.03
0+57 LT.	FUT. MARTIN LOTS	460.76
0+72 LT.	8	462.56
1+07 RT.	25	463.05
1+75 LT.	EX. MARTIN LOT	466.83
1+96 RT.	26 (DHC)	471.36
2+15 LT.	7 (DHC)	474.64
MH # 108 TO MH # 109		
@MH#108 LT.	6	474.85
0+70 RT.	27	475.14

MANHOLE TABULATION				
NO.	RD. STATION	DISTANCE	RIM	SLOPE
104			1' 6" ABOVE EX. GROUND	
105			1' 6" ABOVE EX. GROUND	
106	IN CUL-DE-SAC		442.00	
107	15+45	7' LT.	465.52	(-1)8.14%
108	12+19	7' LT.	485.53	(-1)4.00%

STD. DETAIL G5.41  
BRACKEN DRIVE



SEE SHEET 6 FOR PROFILE OF 6" S TO LOT 23  
SEE SHEET 6 FOR PROFILES OF OUTFALL SEWER MAIN  
SEE SHEET 7 FOR PROFILES OF MAINS IN NICOLSON ROAD  
SEE SHEET 6 FOR PROFILES OF MAINS IN BRACKEN DRIVE

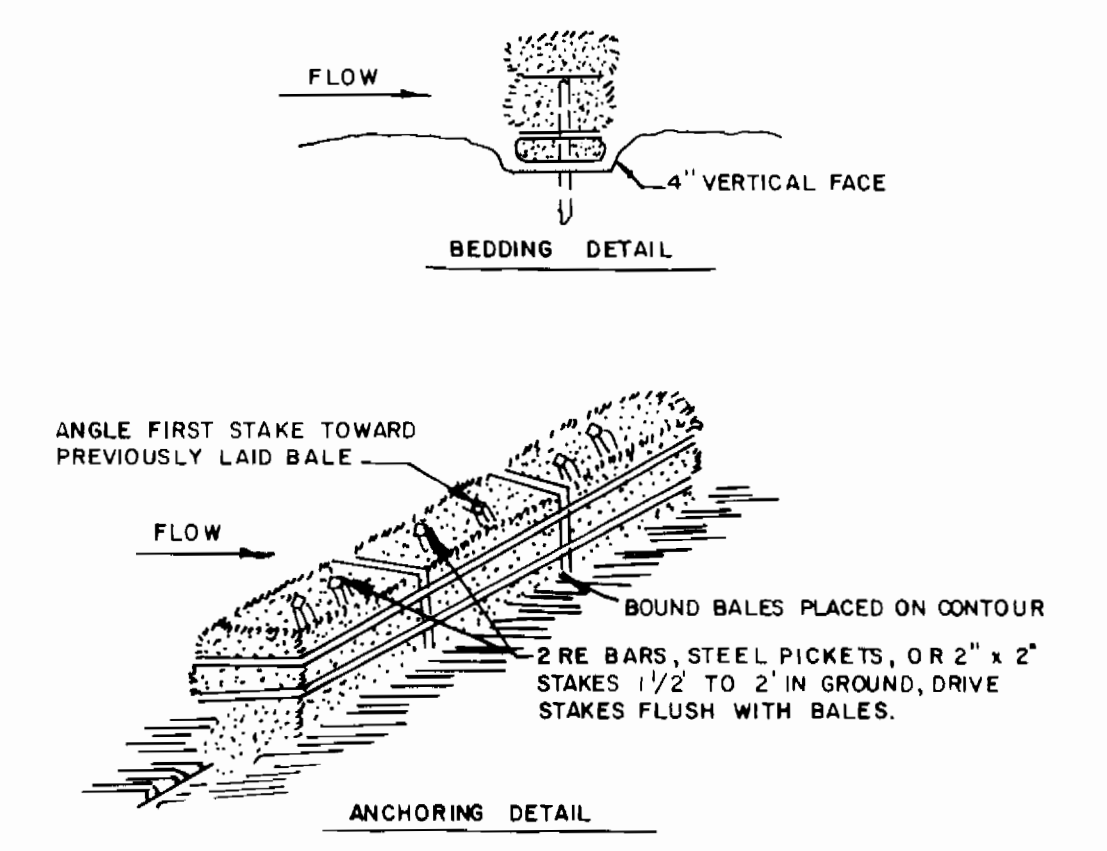
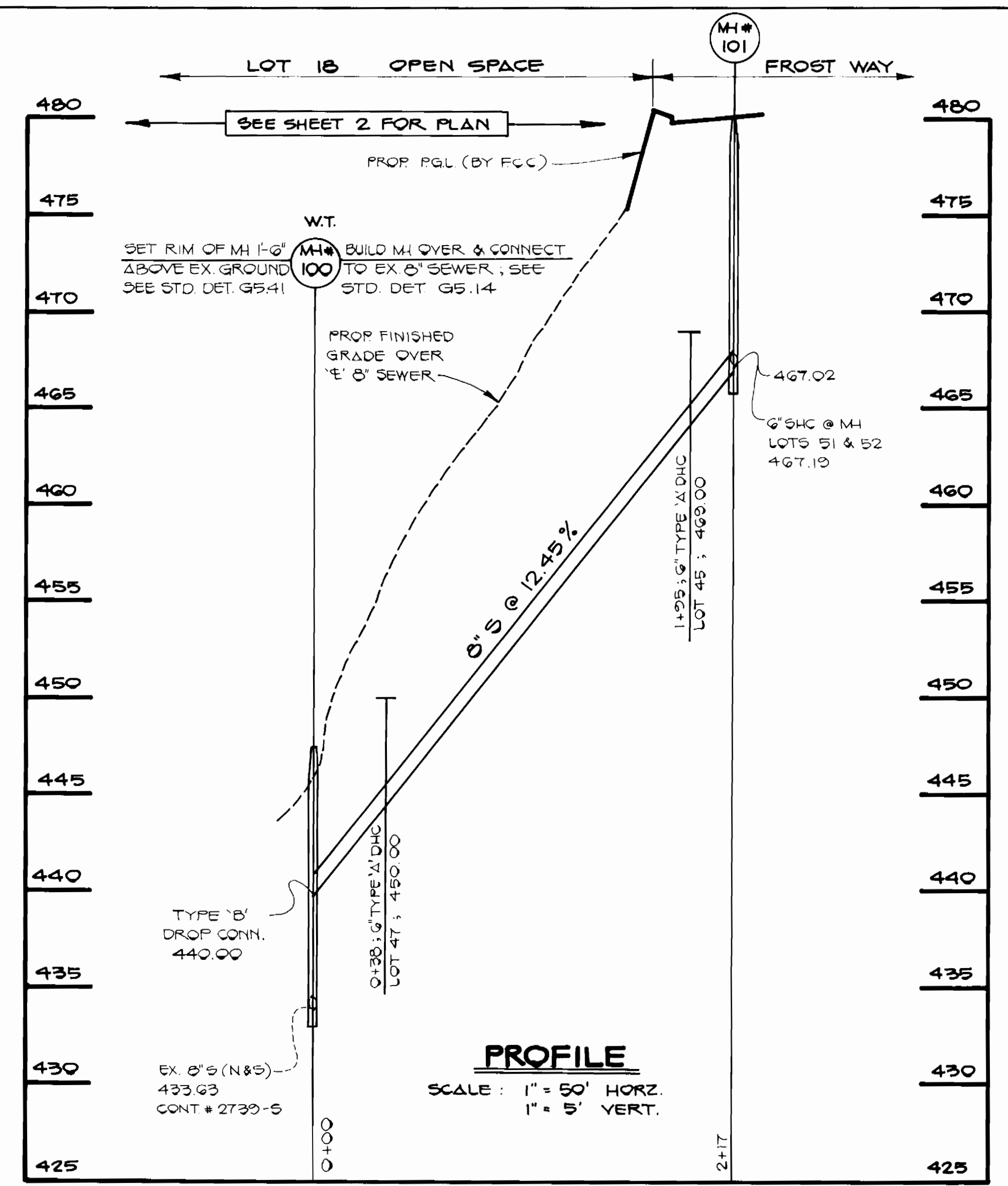
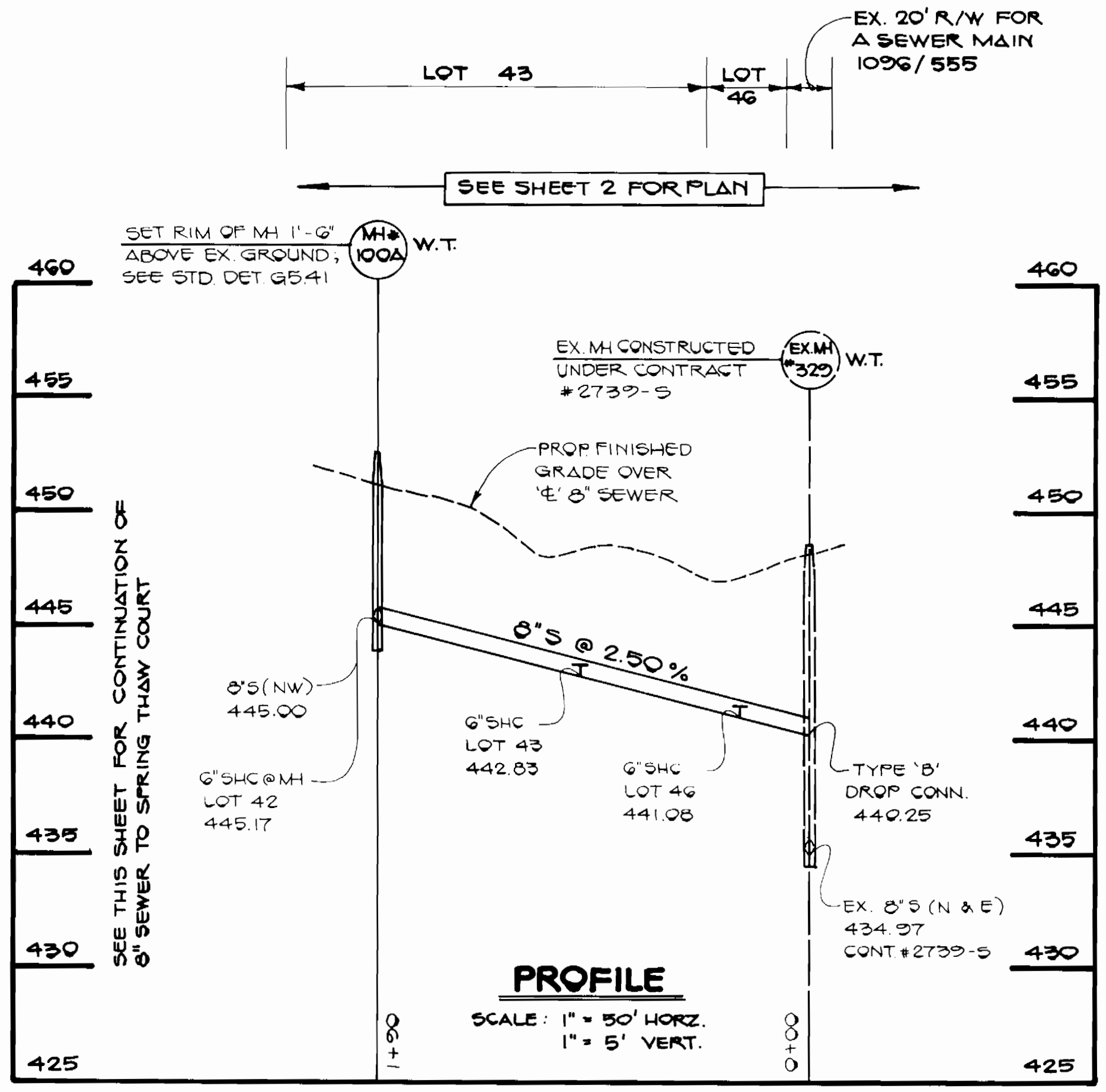
PLAN  
SCALE: 1" = 50'

SEE SHEET 3  
MATCH LINE A-A

CONTRACT NO. 24-1826-D  
MAPLE FOREST  
SECTION ONE & SECTION TWO  
WATER AND SEWER EXTENSIONS  
HOWARD COUNTY, MARYLAND

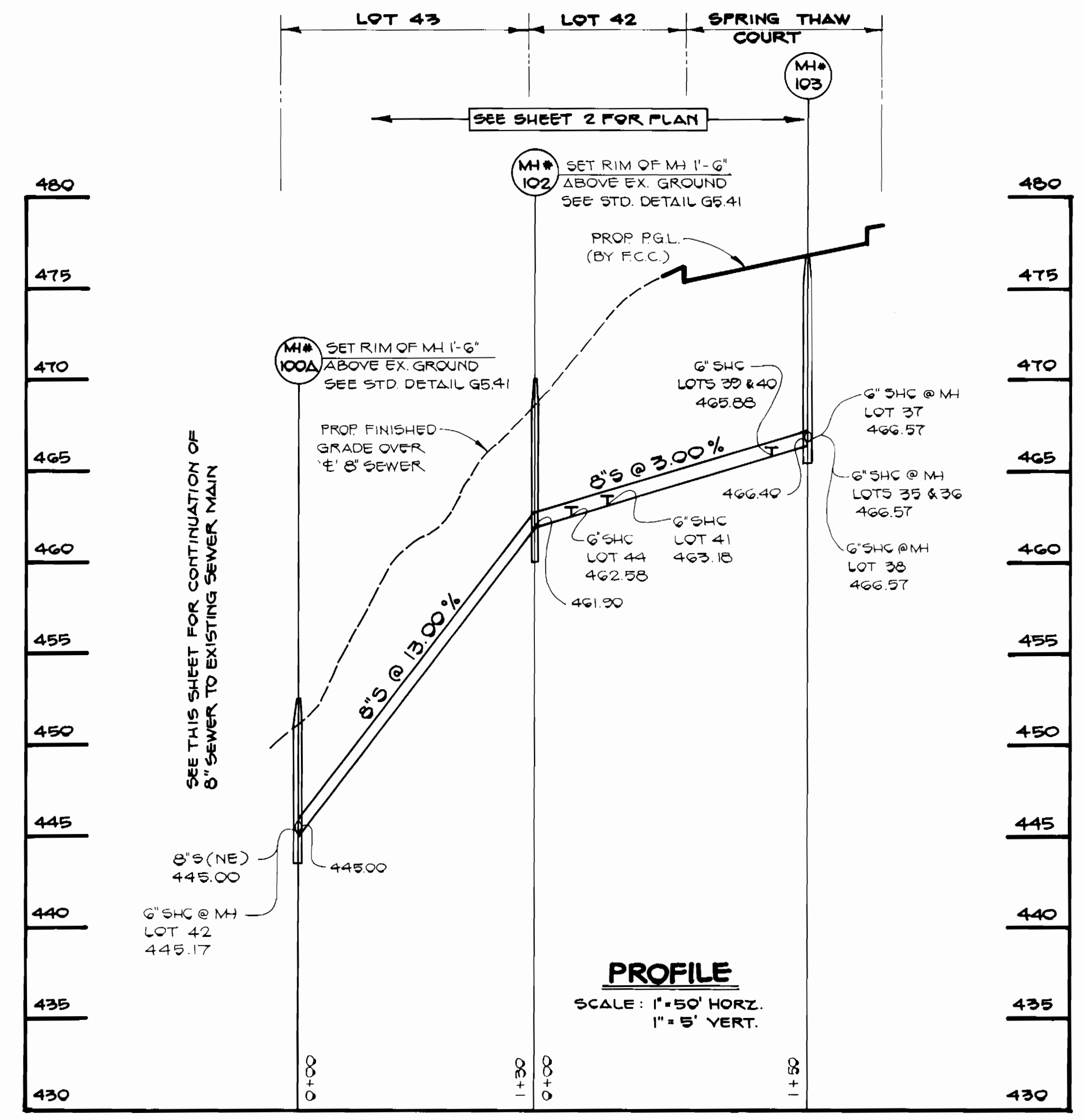
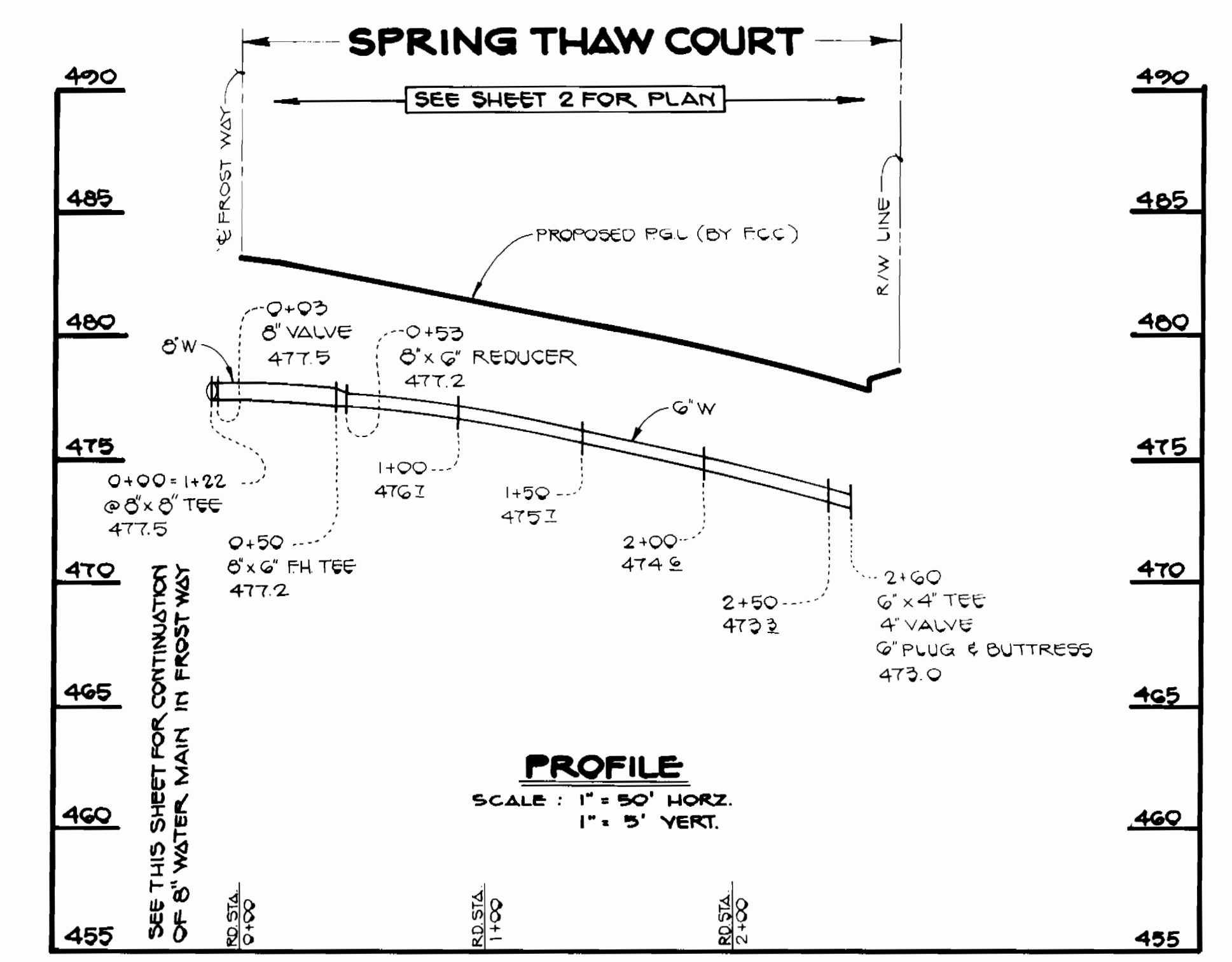
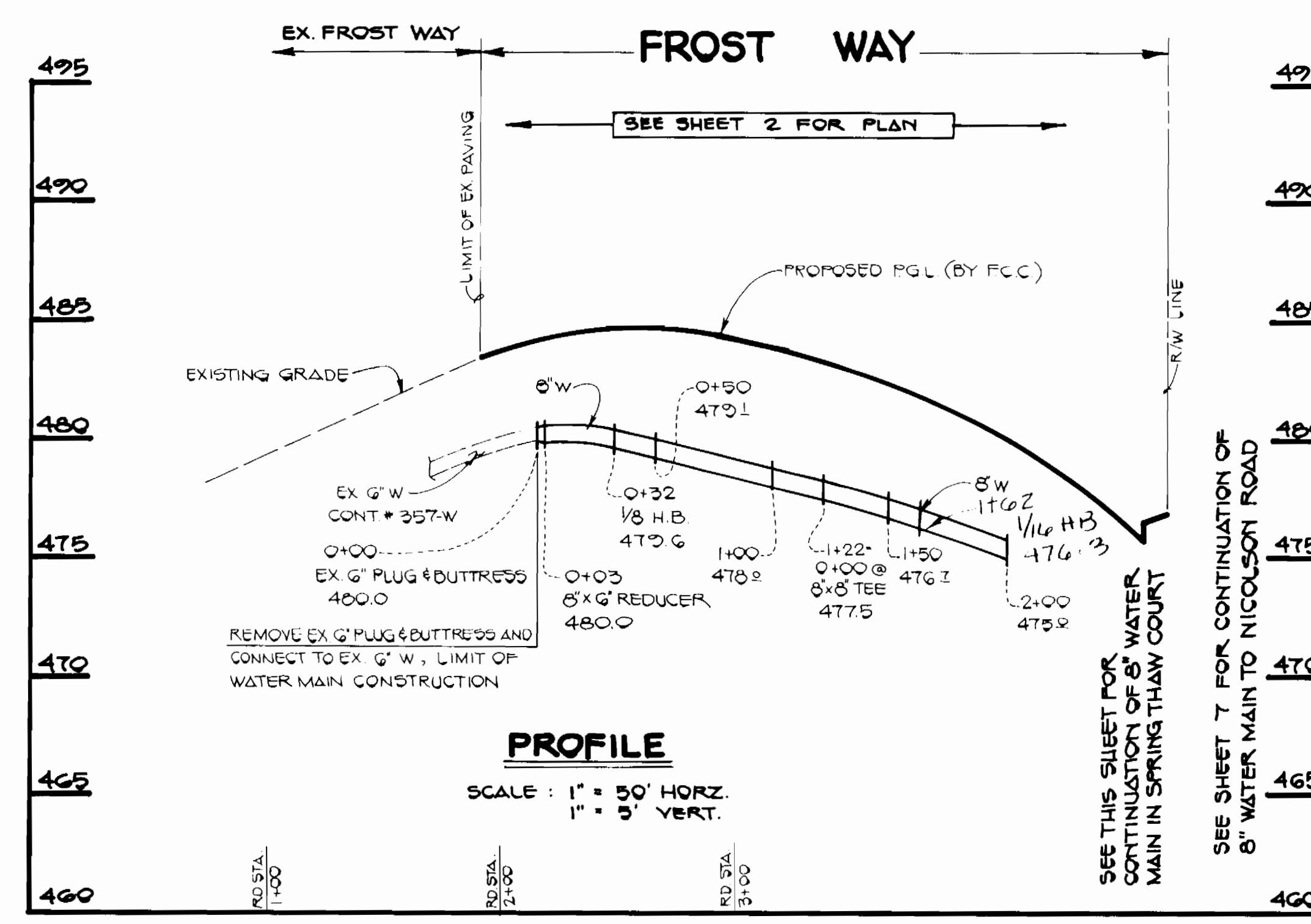
DEPARTMENT OF PUBLIC WORKS HOWARD COUNTY, MARYLAND <i>James P. ...</i> 4/188 <i>Robert M. ...</i> 9-2-88 CHIEF, BUREAU OF UTILITIES		FISHER, COLLINS AND CARTER, INC. CONSULTING ENGINEERS AND LAND SURVEYORS 8388 COURT AVENUE ELLICOTT CITY, MARYLAND 21043 #9757 <i>Terrell A. Fisher</i>		DES. JO & G.W. DRN. G.W. CHK. P.W.K. DATE: 03/22/88 G.W. BY NO. REVISE PLAN AND SHG. TABLE		PLAN WATER AND SEWER MAINS DATE: 11/21/88 800 SCALE MAP NO. 17 BLOCK NO.		MAPLE FOREST SECTION ONE & SECTION TWO CONTRACT NO. 24-1826-D SECOND ELECTION DISTRICT HOWARD COUNTY, MARYLAND SCALE AS SHOWN SHEET 4 OF 7	
---	--	--	--	--	--	---	--	--	--





**STRAW BALE DIKE**

- BALES SHALL BE PLACED AT THE TOE OF A SLOPE OR ON THE CONTOUR AND IN A ROW WITH ENDS TIGHTLY ABUTTING THE ADJACENT BALES.
- EACH BALE SHALL BE EMBEDDED IN THE SOIL A MINIMUM OF 4 INCHES, AND PLACED SO THE BINDINGS ARE HORIZONTAL.
- BALES SHALL BE SECURELY ANCHORED IN PLACE BY EITHER TWO STAKES OR RE-BARS DRIVEN THROUGH THE BALE. THE FIRST STAKE IN EACH BALE SHALL BE DRIVEN TOWARD THE PREVIOUSLY LAID BALE AT AN ANGLE TO FORCE THE BALES TOGETHER. STAKES SHALL BE DRIVEN FLUSH WITH THE BALE.
- INSPECTION SHALL BE FREQUENT AND REPAIR REPLACEMENT SHALL BE MADE PROMPTLY AS NEEDED.
- BALES SHALL BE REMOVED WHEN THEY HAVE SERVED THEIR USEFULNESS SO AS NOT TO BLOCK OR IMPEDE STORM FLOW OR DRAINAGE.



Revised Profiles

CONTRACT NO. 24-1826-D  
MAPLE FOREST  
SECTION ONE & SECTION TWO  
WATER AND SEWER MAIN EXTENSIONS  
HOWARD COUNTY, MARYLAND

DEPARTMENT OF PUBLIC WORKS  
HOWARD COUNTY, MARYLAND

Director of Public Works  
11-25-88

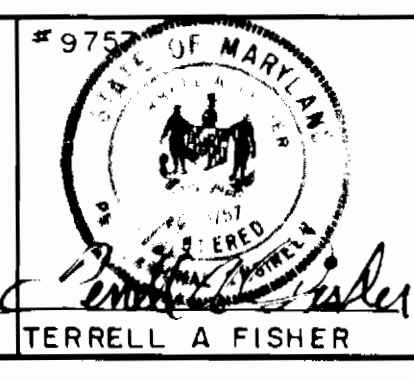
Chief, Bureau of Engineering  
11-25-88

Chief, Bureau of Utilities  
11-25-88

Chief, Land Development Division

FISHER, COLLINS, AND CARTER, INC.  
CONSULTING ENGINEERS AND LAND SURVEYORS  
8388 COURT AVENUE  
ELLICOTT CITY, MARYLAND 21043

TERRELL A. FISHER



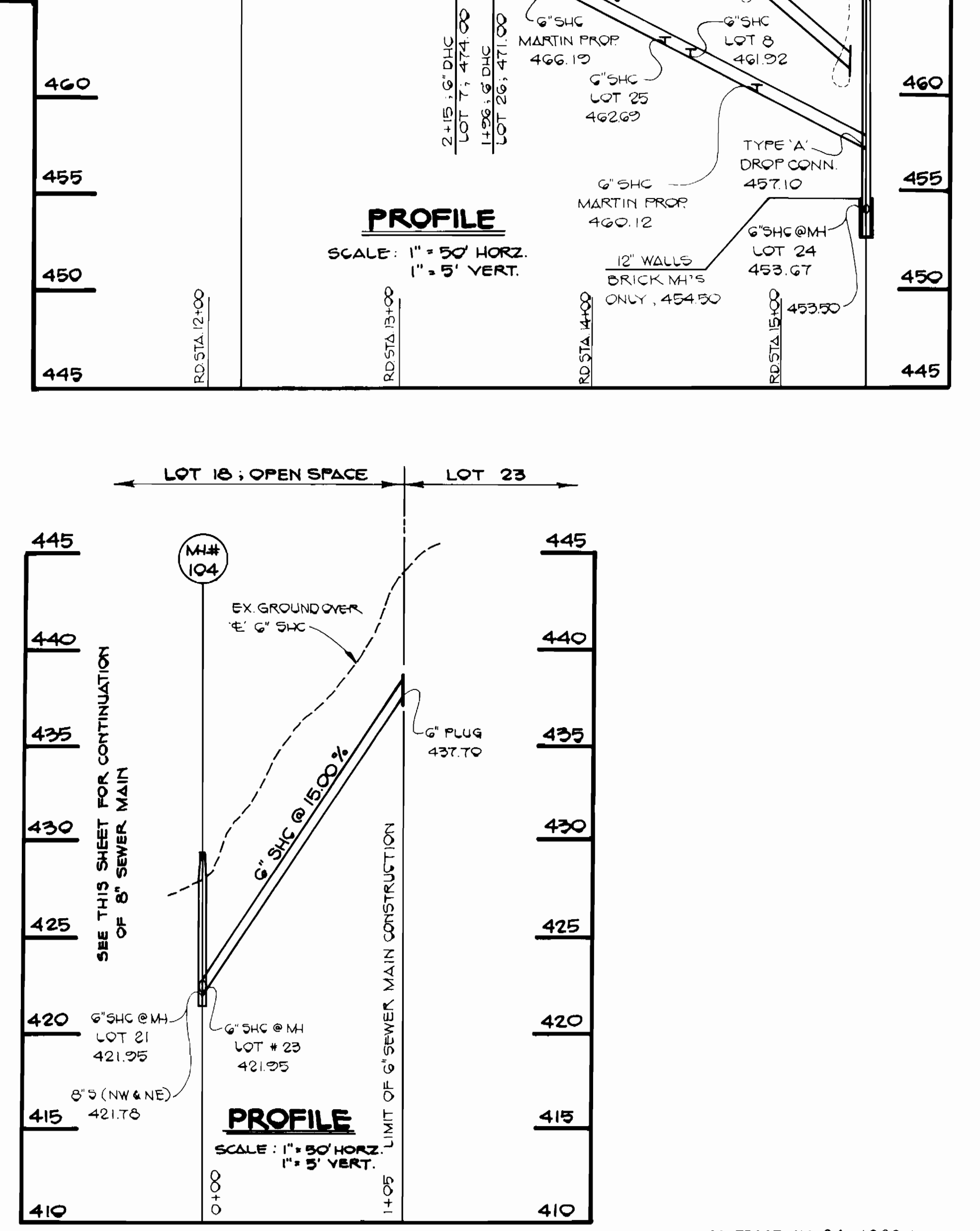
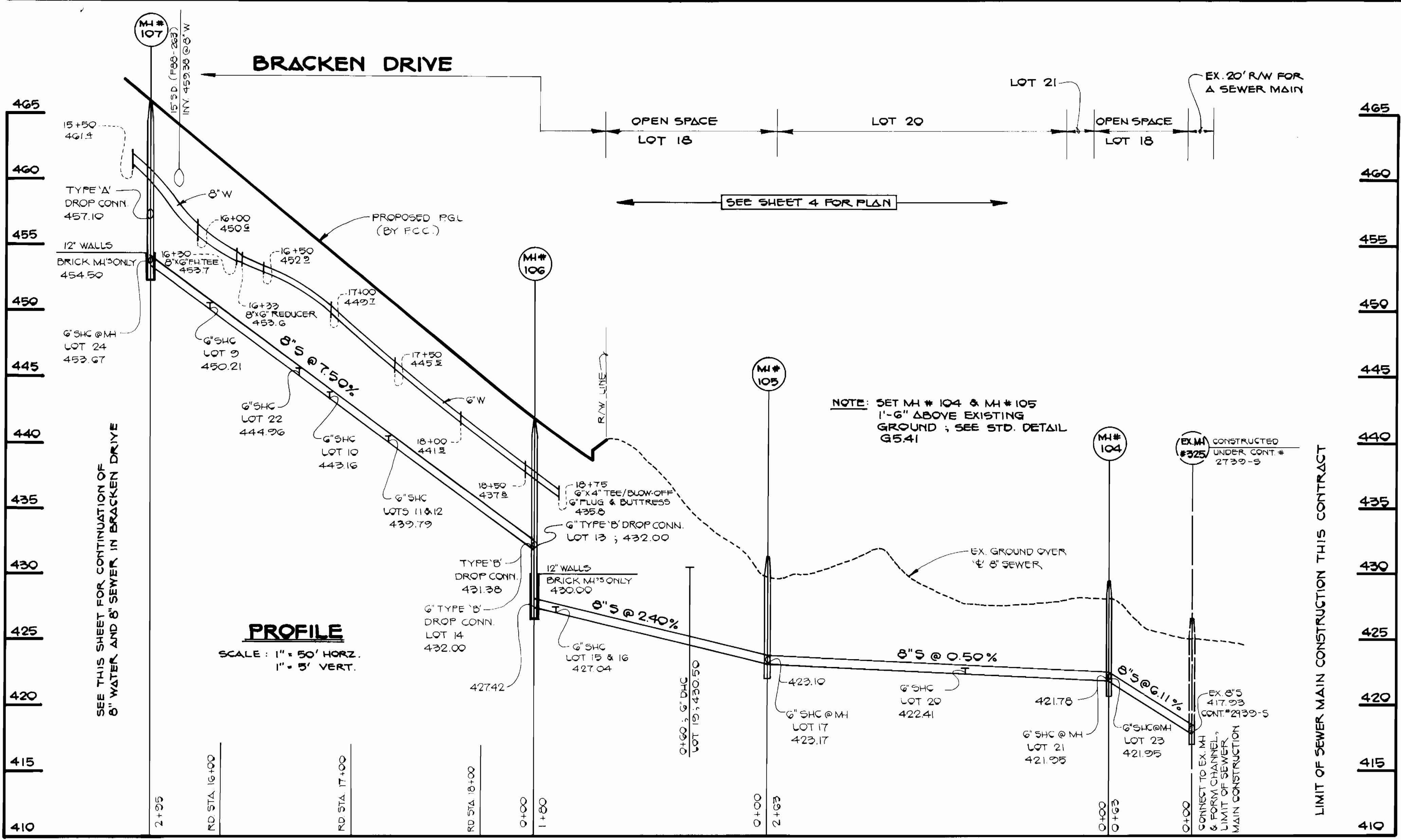
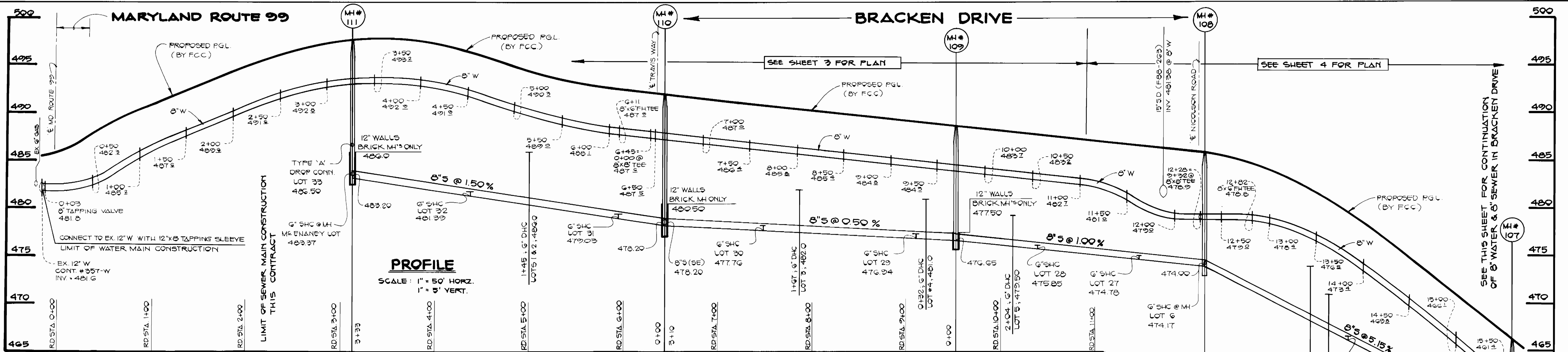
DES: G.W.				
DRN: G.W.				
CHK: P.W.K.				
DATE: 11/21/88	GW	REVISION	11/21/88	
BY	NO.	REVISION	DATE	

PROFILES  
WATER AND SEWER MAINS

600' SCALE MAP NO. 17 BLOCK NO.

MAPLE FOREST  
SECTION ONE & SECTION TWO  
CONTRACT NO. 24-1826-D  
SECOND ELECTION DISTRICT  
HOWARD COUNTY, MARYLAND

SCALE AS SHOWN  
SHEET 5 OF 7



**6" SHC @ LOT 23**

CONTRACT NO. 24-1826-D  
MAPLE FOREST  
SECTION ONE & SECTION TWO  
WATER AND SEWER MAIN EXTENSIONS  
HOWARD COUNTY, MARYLAND

DEPARTMENT OF PUBLIC WORKS  
HOWARD COUNTY, MARYLAND

Director of Public Works: Robert M. Bainger, 11-25-88  
Chief, Bureau of Utilities

Chief, Bureau of Engineering: [Signature], 11-24-88  
Chief, Land Development Division

FISHER, COLLINS, AND CARTER, INC.  
CONSULTING ENGINEERS AND LAND SURVEYORS  
8388 COURT AVENUE  
ELLIOTT CITY, MARYLAND 21043

TERRELL A. FISHER

DES: G.W.	
DRN: G.W.	
CHK: P.W.K.	
DATE: 11/21/88	
G.W.	REVISED PROFILES
BY NO.	REVISION
	DATE

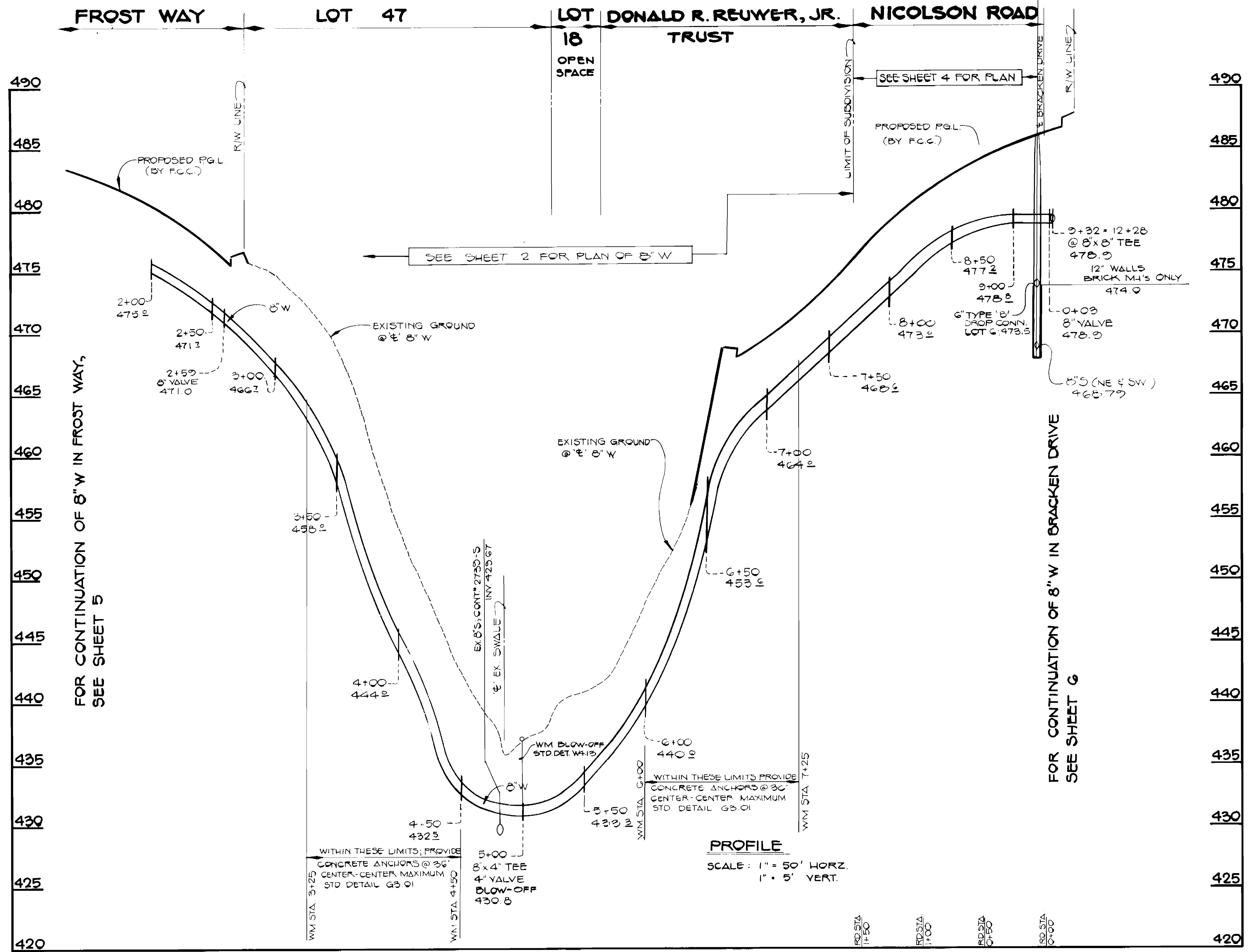
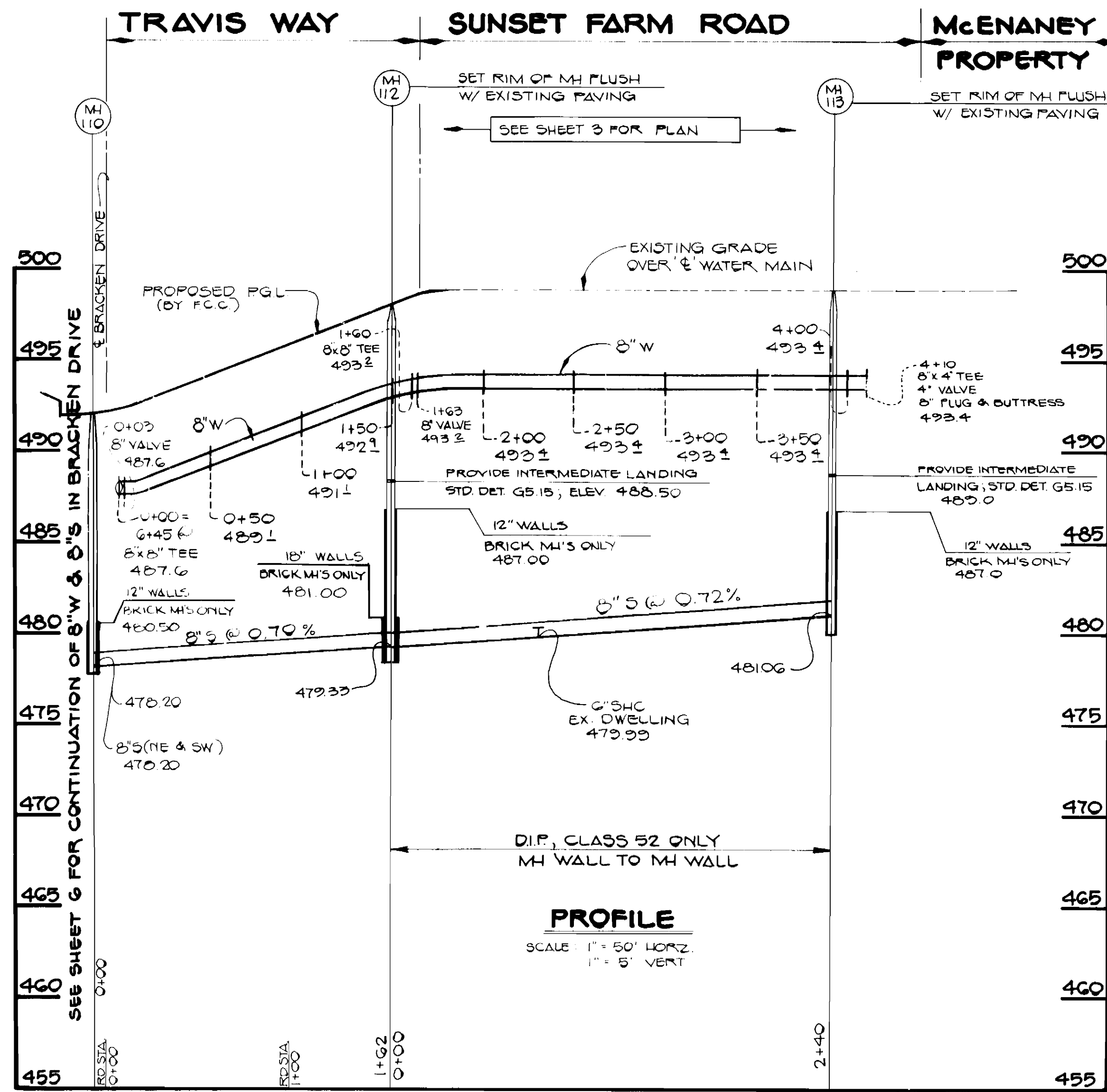
PROFILES  
WATER AND SEWER MAINS

600 SCALE MAP NO. 17 BLOCK NO.

MAPLE FOREST  
SECTION ONE & SECTION TWO  
CONTRACT NO. 24-1826 - D  
SECOND ELECTION DISTRICT  
HOWARD COUNTY, MARYLAND

SCALE AS SHOWN  
SHEET 6 OF 7





CONTRACT NO. 24-1826-D  
 MAPLE FOREST  
 SECTION ONE & SECTION TWO  
 WATER AND SEWER EXTENSIONS  
 HOWARD COUNTY, MARYLAND

DEPARTMENT OF PUBLIC WORKS  
 HOWARD COUNTY, MARYLAND  
 Director of P.W. [Signature]  
 Chief, Bureau of Utilities [Signature] 9-2-88  
 Chief, Land Development Division [Signature] 1/10/88

FISHER, COLLINS AND CARTER, INC. #9757  
 CONSULTING ENGINEERS AND LAND SURVEYORS  
 8388 COURT AVENUE  
 ELLICOTT CITY, MARYLAND 21043  
 [Signature]  
 TERRELL A. FISHER

DESIGNER	J.O./G.W.	DATE	12/14/88
DRN	G.W.	NO.	3
CHK. P.W.K.	G.W.	NO.	2
DATE	08/22/88	BY	NO.
REVISION	REVISE PROFILE - MH #112 TO MH #113 REVISE PROFILES Elevation change of 8" Valve @ 2+50 Frost Way		

PROFILES  
 WATER AND SEWER MAINS  
 DATE 12/14/88  
 BUR. SCALE MAP NO. 17 BLOCK NO.

MAPLE FOREST  
 SECTION ONE & SECTION TWO  
 CONTRACT NO. 24-1826-D  
 SECOND ELECTION DISTRICT  
 HOWARD COUNTY, MARYLAND  
 SCALE AS SHOWN  
 SHEET 7 OF 7