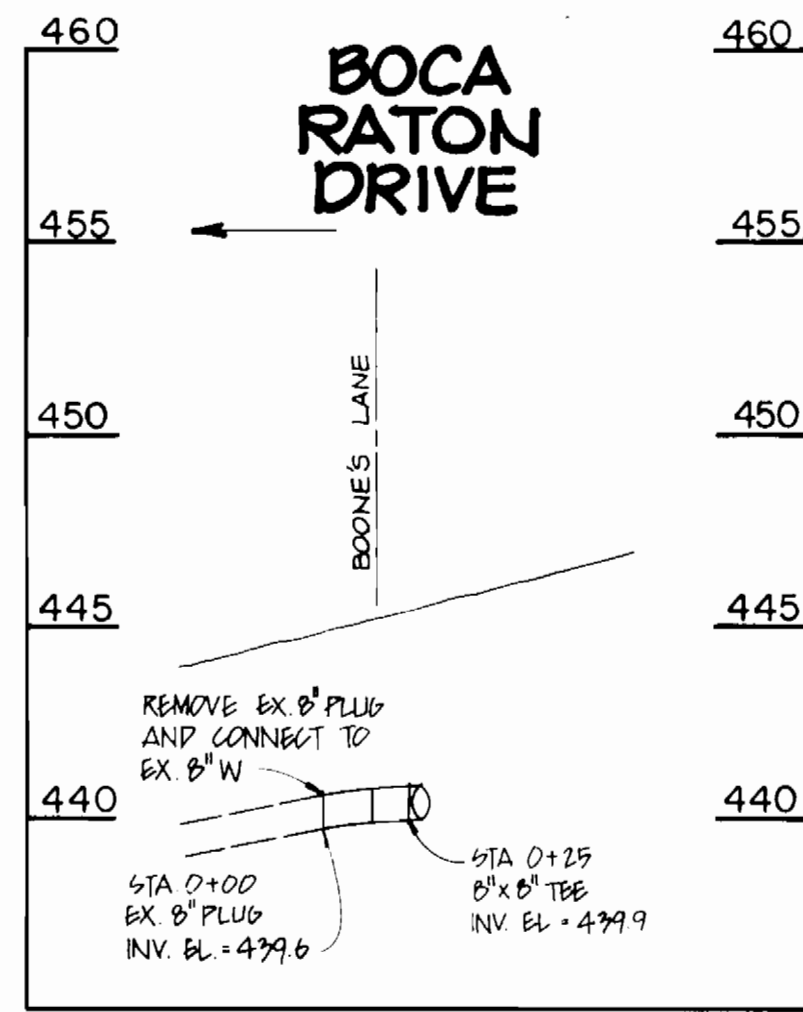


B.M. 1 EL = 446.37  
 FIRE HYDRANT AT INTERSECTION OF  
 BOONE'S LANE AND BOCA RATON DR.  
 EAST SIDE BONNET BOLT.

TURF VALLEY OVERLOOK  
 SECTION I/AREA II  
 PLAT NO. 7214 TO & INCL. 7215  
 PARCEL: 683

WATER MAIN STAKEOUT TABLE					
STATION / APPURT	INST AT	B.S. AT	ANGLE	RIGHT	DISTANCE
0+00	8" PLUG	J-1	183°-41'-16"		102.35'
1+50	8" x 8" TEE	J-1	J-2	345°-45'-18"	49.64'
5+15	25" LEFT / F.H.	J-10	J-2	238°-29'-36"	23.75'
5+20	8" PLUG	J-10	J-2	261°-27'-59"	43.66'

RESTORATION SCHEDULE	
STATION	MATERIAL
0+00 - 5+20	BITUMINOUS CONCRETE



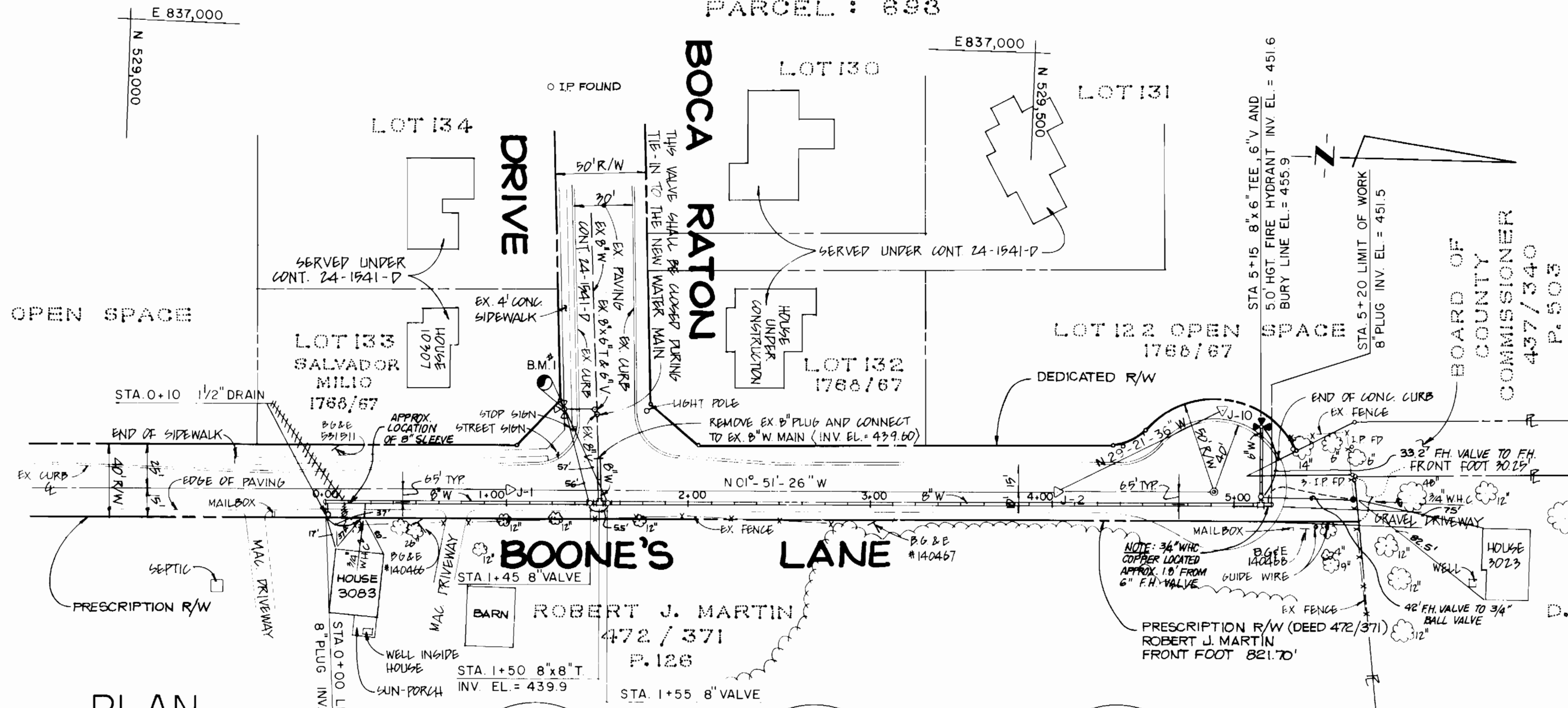
PROFILE  
 SCALE: HOR 1" = 50'  
 VERT 1" = 5'

**SEDIMENT CONTROL NOTES**

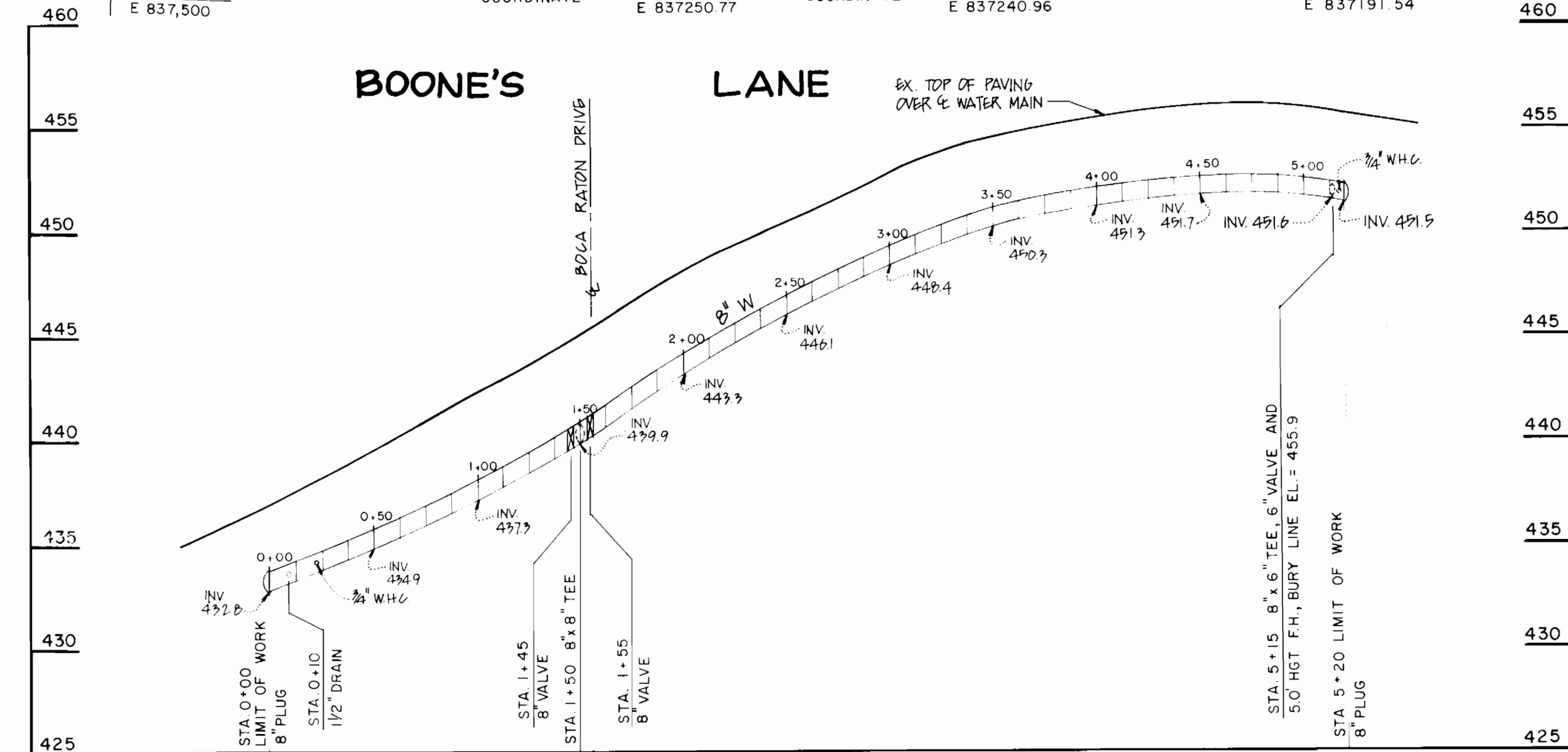
- SEDIMENT CONTROL APPROVAL IS PREDICATED ON DAILY BACKFILLING OF ALL OPEN TRENCHES.
- PROVISIONS SHALL BE MADE FOR DAILY CLEANUP OF ANY SEDIMENT THAT ACCUMULATES ON THE PUBLIC RIGHT-OF-WAY

SEDIMENT CONTROL MEASURES FOR THIS CONTRACT WILL BE IMPLEMENTED IN ACCORDANCE WITH SECTION 219 OF THE HOWARD COUNTY DESIGN MANUAL VOLUME IV - STANDARD SPECIFICATIONS AND DETAILS FOR CONSTRUCTION, AND THE 1983 MARYLAND STANDARDS AND SPECIFICATIONS FOR SOIL EROSION AND SEDIMENT CONTROL.

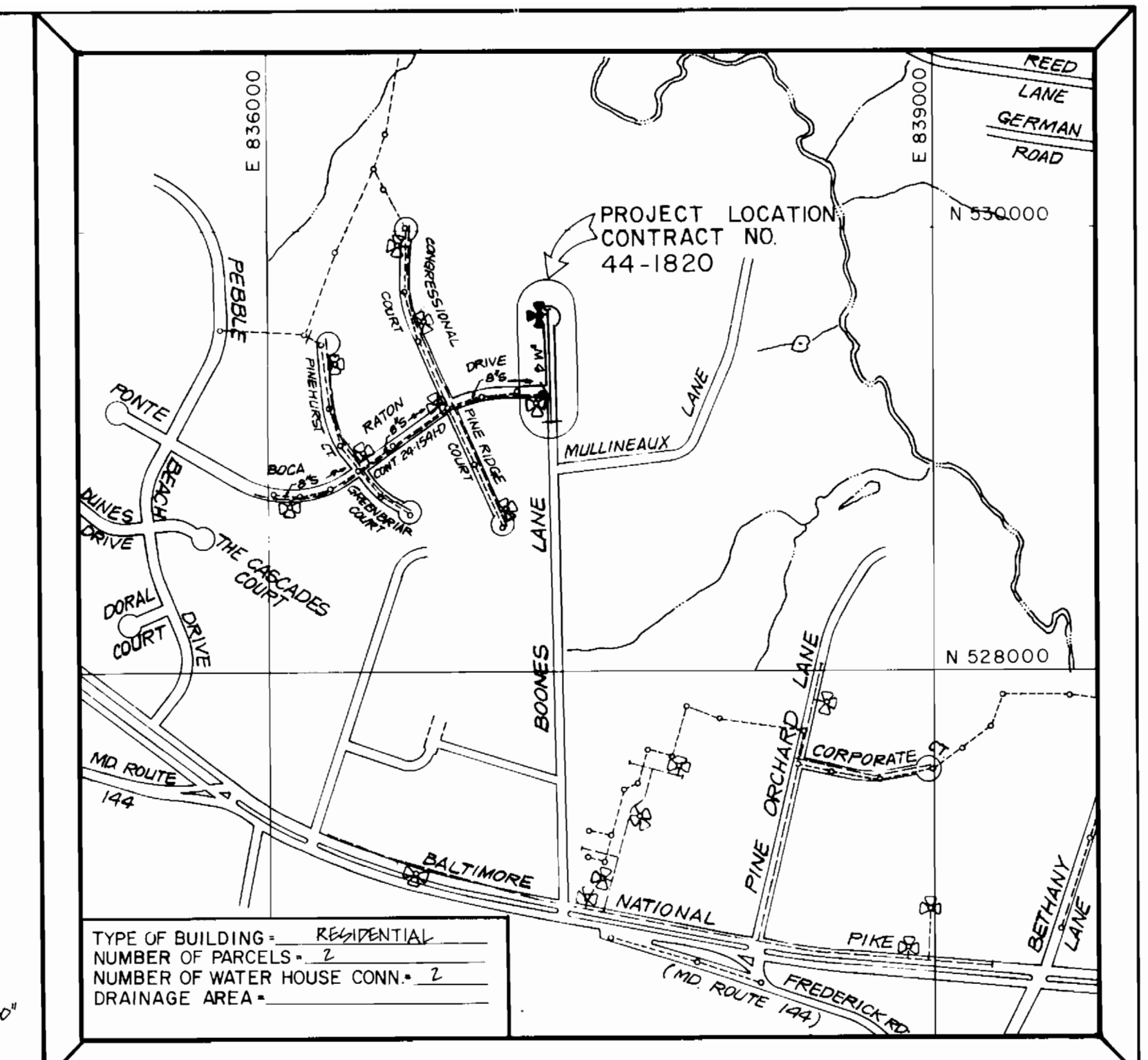
LOT 140 OPEN SPACE



PLAN  
 SCALE 1" = 50'



PROFILE  
 SCALE: HOR 1" = 50'  
 VERT 1" = 5'



VICINITY MAP  
 SCALE: 1" = 600'  
 WATER CODE 402  
 FOR COUNTY USE ONLY

**GENERAL NOTES**

- APPROXIMATE LOCATION OF EXISTING MAINS ARE SHOWN. THE CONTRACTOR SHALL TAKE ALL NECESSARY PRECAUTIONS TO PROTECT EXISTING MAINS AND SERVICES AND MAINTAIN UNINTERRUPTED SUPPLY. ANY DAMAGE INCURRED SHALL BE REPAIRED IMMEDIATELY TO THE SATISFACTION OF THE ENGINEER AT THE CONTRACTOR'S EXPENSE.
- ALL HORIZONTAL CONTROLS ARE BASED ON MARYLAND STATE COORDINATES.
- ALL VERTICAL CONTROLS ARE BASED ON U.S.G.S. DATUM.
- ALL PIPE ELEVATIONS SHOWN ARE INVERT ELEVATIONS.
- CLEAR ALL UTILITIES BY A MINIMUM OF 6"
- FOR DETAILS NOT SHOWN ON THE DRAWINGS, AND FOR MATERIALS AND CONSTRUCTION METHODS, USE HOWARD COUNTY DESIGN MANUAL, VOLUME IV - STANDARD SPECIFICATIONS AND DETAILS FOR CONSTRUCTION. THE CONTRACTOR SHALL HAVE A COPY OF VOLUME IV ON THE JOB.
- WHERE TEST PIT HAVE BEEN MADE ON EXISTING UTILITIES, THEY ARE NOTED BY THE SYMBOL AT THE LOCATION OF THE TEST PIT. A NOTE OR NOTES CONTAINING THE RESULTS OF THE TEST PIT OR PITS INCLUDED ON THE DRAWING. EXISTING UTILITIES IN THE VICINITY OF THE PROPOSED WORK FOR WHICH TEST PITS HAVE NOT BEEN DUG SHALL BE LOCATED BY THE CONTRACTOR TWO WEEKS IN ADVANCE OF CONSTRUCTION OPERATIONS AT HIS OWN EXPENSE.
- CONTRACTOR SHALL NOTIFY THE FOLLOWING UTILITIES OR AGENCIES AT LEAST FIVE WORKING DAYS BEFORE STARTING WORK SHOWN ON THESE PLANS:
  - STATE HIGHWAY ADMINISTRATION 531-5533
  - BALTIMORE GAS & ELECTRIC COMPANY CONTRACTOR SERVICES 850-4620
  - BALTIMORE GAS & ELECTRIC COMPANY UNDER GROUND DAMAGE CONTROL 859-9004
  - BALTIMORE GAS & ELECTRIC COMPANY TROUBLE SHOOTING 298-9001
  - MISS UTILITY 1-800-257-7777
  - COLONIAL PIPE LINE COMPANY 795-1390
  - BUREAU OF UTILITIES, HOWARD COUNTY DEPARTMENT OF PUBLIC WORKS 992-2366
  - CHESAPEAKE & POTOMAC (C&P) TELEPHONE COMPANY 1-800-257-7777
- TREES AND SHRUBS ARE TO BE PROTECTED FROM DAMAGE TO MAXIMUM EXTENT. TREES AND SHRUBS LOCATED WITHIN THE CONSTRUCTION STRIP ARE NOT TO BE REMOVED OR DAMAGED BY THE CONTRACTOR.
- CONTRACTOR SHALL REMOVE TREES, STUMPS AND ROOTS ALONG LINE OF EXCAVATION. PAYMENT FOR SUCH REMOVAL SHALL BE INCLUDED IN THE UNIT PRICE BID FOR CONSTRUCTION OF THE MAIN.
- ALL WATER MAINS TO BE D.I.P. UNLESS OTHERWISE NOTED.
- TOP OF ALL WATER MAINS TO HAVE A MINIMUM OF 3/2" COVER UNLESS OTHERWISE NOTED.
- VALVES ADJACENT TO TEES SHALL BE STRAPPED TO TEES.
- ALL FITTINGS SHALL BE BUTTRESSED OR ANCHORED WITH CONCRETE IN ACCORDANCE WITH THE STANDARD DETAILS UNLESS OTHERWISE PROVIDED FOR ON THE DRAWINGS.
- FIRE HYDRANTS SHALL BE SET TO THE BURY LINE ELEVATIONS SHOWN ON THE DRAWINGS. ALL FIRE HYDRANTS SHALL BE STRAPPED AND BUTTRESSED WITH CONCRETE IN ACCORDANCE WITH THE STANDARD DETAILS. SOIL AROUND THE FIRE HYDRANTS SHALL BE COMPACTED IN ACCORDANCE WITH SECTION 1003 OF THE STANDARD SPECIFICATIONS.
- THE CONTRACTOR SHALL NOT OPERATE ANY WATER MAIN VALVES ON THE EXISTING WATER SYSTEM.
- ALL WATER HOUSE CONNECTIONS SHALL BE FOR INSIDE METER SETTING, UNLESS OTHERWISE NOTED ON THE DRAWINGS OR IN THE SPECIFICATIONS.
- T.B. DENOTES TEST (SOIL) BORING.
- THE EXISTING 8" VALVE ON "BOCA RATON DRIVE" IS TO BE CLOSED DURING THE TIE-IN TO THE NEW LINE.
- THE WATER HOUSE CONNECTIONS ARE TO BE OPEN CUT.

ITEM	QUANTITIES			SUPPLIER
	BID	AS BUILT	MATERIAL	
8" WATER PIPE	526 LF	568 LF	CL52 GRIFFIN	MFC SALES INC
6" WATER PIPE	22 LF	36 LF	CL52 GRIFFIN	" " " "
3/4" W.H.C	84 LF	80 LF	K COPPER	" " " "
8" WATER VALVE	2 EA	2 EA	KENNEY	" " " "
6" F.H. VALVE	1 EA	1 EA	KENNEY	" " " "
8" x 8" TEE	1 EA	1 EA	DUCTILE TYLER	" " " "
8" x 6" TEE	1 EA	1 EA	" " " "	" " " "
FIRE HYDRANT	1 EA	1 EA	MFH DRESSER	" " " "
1/2" DRAIN	1 EA	1 EA	" " " "	" " " "

REVIEWED FOR HOWARD COUNTY SOIL CONSERVATION DISTRICT AND MEETS TECHNICAL REQUIREMENTS  
 APPROVED: \_\_\_\_\_  
 U.S. SOIL CONSERVATION SERVICE DATE \_\_\_\_\_

THIS PLAN IS APPROVED FOR EROSION AND SEDIMENT CONTROL BY THE HOWARD COUNTY SOIL CONSERVATION DISTRICT.  
 APPROVED: \_\_\_\_\_  
 HOWARD COUNTY SOIL CONSERVATION DISTRICT DATE \_\_\_\_\_



DES: M.H.			
DRN: M.D.C.			
CHK: M.H.	Y.P.	2	DELEGATED WATER MAIN STAKEOUT TABLE 2/19/89
	Y.P.	1	RELOCATED PROPOSED 8" W FROM WEST SIDE TO EAST SIDE 2/6/89
DATE: 1/2/88	BY NO.		REVISION DATE

PLAN AND PROFILE OF  
**WATER MAIN EXTENSION**  
 600' SCALE MAP NO. 17 BLOCK NO. 19

**BOONE'S LANE WATER EXTENSION**  
 CAPITAL PROJECT NO. W-8688  
 CONTRACT NO. 44-1820  
 SECOND ELECTION DISTRICT  
 HOWARD COUNTY, MARYLAND

SCALE AS SHOWN  
 SHEET 1 OF 1