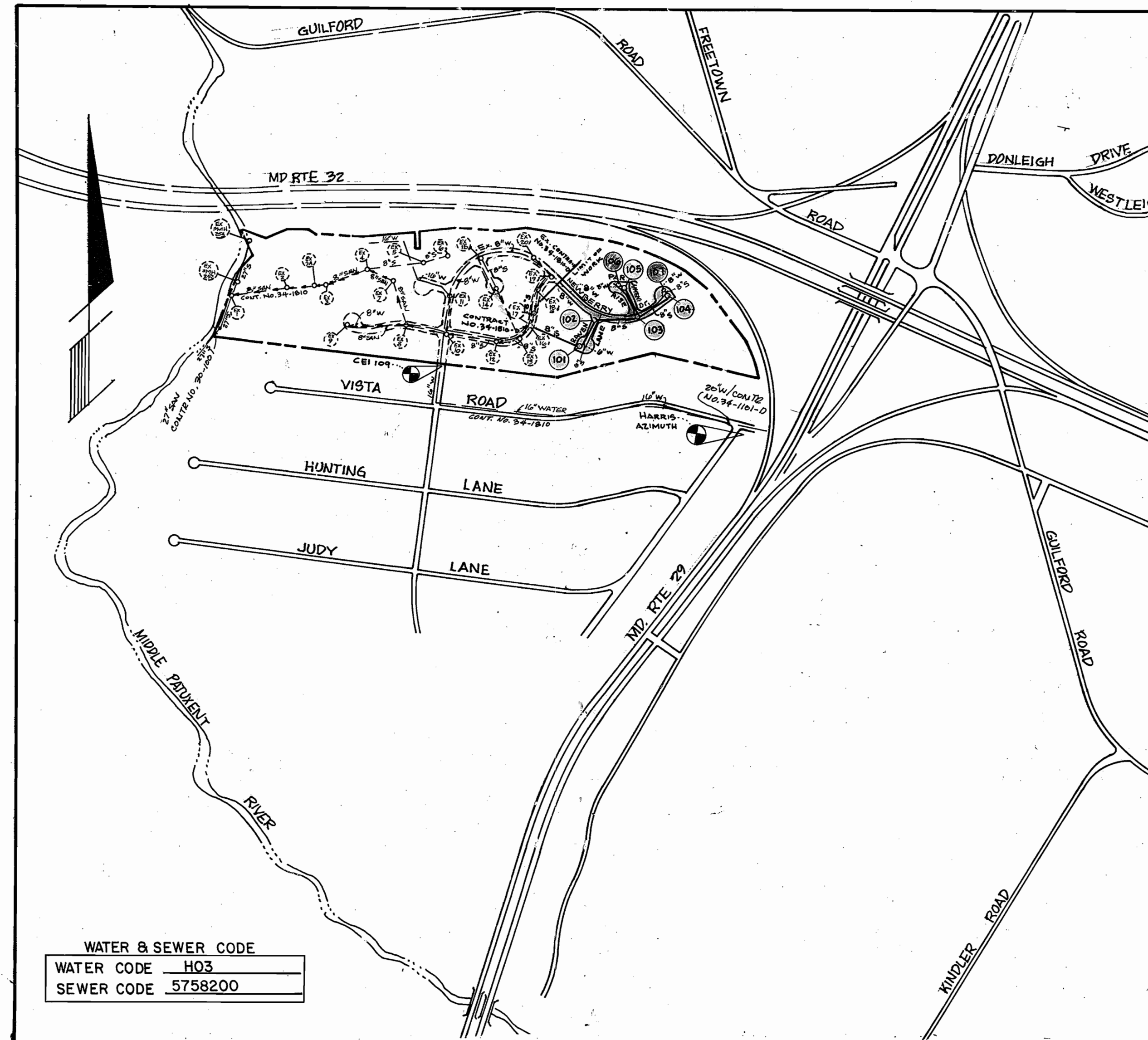


GENERAL NOTES

- APPROXIMATE LOCATION OF EXISTING MAINS ARE SHOWN. THE CONTRACTOR SHALL TAKE ALL NECESSARY PRECAUTIONS TO PROTECT EXISTING MAINS AND SERVICES AND MAINTAIN UNINTERRUPTED SUPPLY. ANY DAMAGE INCURRED SHALL BE REPAIRED IMMEDIATELY TO THE SATISFACTION OF THE ENGINEER AT THE CONTRACTOR'S EXPENSE.
- ALL HORIZONTAL CONTROLS ARE BASED ON MARYLAND STATE COORDINATES.
- ALL VERTICAL CONTROLS ARE BASED ON U.S.G.S. DATUM.
- ALL PIPE ELEVATIONS SHOWN ARE INVERT ELEVATIONS.
- CLEAR ALL UTILITIES BY A MINIMUM OF 6". CLEAR ALL POLES BY 2'-0" MINIMUM OR TUNNEL AS REQUIRED.
- FOR DETAILS NOT SHOWN ON THE DRAWINGS, AND FOR MATERIALS AND CONSTRUCTION METHODS, USE HOWARD COUNTY DESIGN MANUAL, VOLUME IV, STANDARD SPECIFICATIONS AND DETAILS FOR CONSTRUCTION. THE CONTRACTOR SHALL HAVE A COPY OF VOLUME IV ON THE JOB.
- WHERE TEST PITS HAVE BEEN MADE ON EXISTING UTILITIES, THEY ARE NOTED BY THE SYMBOL AT THE LOCATION OF THE TEST PIT. A NOTE OR NOTES CONTAINING THE RESULTS OF THE TEST PIT OR PITS IS INCLUDED ON THE DRAWINGS. EXISTING UTILITIES IN THE VICINITY OF THE PROPOSED WORK FOR WHICH TEST PITS HAVE NOT BEEN DUG SHALL BE LOCATED BY THE CONTRACTOR TWO WEEKS IN ADVANCE OF CONSTRUCTION OPERATIONS AT HIS OWN EXPENSE.
- CONTRACTOR SHALL NOTIFY THE FOLLOWING UTILITIES OR AGENCIES AT LEAST FIVE WORKING DAYS BEFORE STARTING WORK SHOWN ON THESE PLANS:
 STATE HIGHWAY ADMINISTRATION - 531-5533
 BALTIMORE GAS & ELECTRIC CO. - CONTRACTOR SERVICES - 561-2585
 BALTIMORE GAS & ELECTRIC CO. - UNDER GROUND DAMAGE CONTROL - 234-5621
 BALTIMORE GAS & ELECTRIC CO. - TROUBLE SHOOTING - 298-9013
 MISS UTILITY - 1-800-257-7777 C & P TELEPHONE - 725-9976
 COLONIAL PIPELINE CO. - 795-1390 AT & T CABLE DIVISION - 393-3553
 BUREAU OF UTILITIES, HOWARD COUNTY DEPARTMENT OF PUBLIC WORKS - 992-2366
- TREES AND SHRUBS ARE TO BE PROTECTED FROM DAMAGE TO MAXIMUM EXTENT. TREES AND SHRUBS LOCATED WITHIN THE CONSTRUCTION STRIP ARE NOT TO BE REMOVED OR DAMAGED BY THE CONTRACTOR.
- CONTRACTOR SHALL REMOVE TREES, STUMPS AND ROOTS ALONG LINE OF EXCAVATION. (SEE NO. 24)
- ALL WATER MAINS TO BE D.I.P. CLASS 52 UNLESS OTHERWISE NOTED.
- TOPS OF ALL WATER MAINS TO HAVE A MINIMUM OF 3'-1/2' COVER UNLESS OTHERWISE NOTED.
- VALVES ADJACENT TO TEES SHALL BE STRAPPED TO TEES.
- ALL FITTINGS SHALL BE BUTTRESSED OR ANCHORED WITH CONCRETE IN ACCORDANCE WITH THE STANDARD DETAILS UNLESS OTHERWISE PROVIDED FOR ON THE DRAWINGS.
- FIRE HYDRANTS SHALL BE SET TO THE BURY LINE ELEVATIONS SHOWN ON THE DRAWINGS. ALL FIRE HYDRANTS SHALL BE STRAPPED AND BUTTRESSED WITH CONCRETE IN ACCORDANCE WITH STANDARD DETAILS. SOIL AROUND THE FIRE HYDRANT SHALL BE COMPACTED IN ACCORDANCE WITH SECTION 1003 THE STANDARD SPECIFICATIONS.
- THE CONTRACTOR SHALL NOT OPERATE ANY WATER MAIN VALVES ON THE EXISTING WATER SYSTEM.
- ALL SEWER MAINS SHALL BE C.S.P.X., R.C.S.P., V.C.P.X., A.C.P. CLASS 2400 OR P.V.C. UNLESS OTHERWISE NOTED.
- THE CONTRACTOR SHALL PROVIDE A JOINT IN ALL SEWER MAINS WITHIN 2'-0" OF EXTERIOR MANHOLE WALL.
- ALL MANHOLES SHALL BE 4'-0" INSIDE DIAMETER UNLESS OTHERWISE NOTED.
- MANHOLES SHOWN WITH 12" AND 16" WALLS ARE BRICK MANHOLES ONLY.
- ALL D.I.P. FITTINGS SHALL BE IN ACCORDANCE WITH AWWA SPECIFICATION C-153 DUCTILE IRON COMPACT FITTINGS, 3" TO 12" FOR WATER AND OTHER LIQUIDS.
- ALL SINGLE W.H.C.'S SHALL BE 3/4" ALL DOUBLE W.H.C.'S SHALL BE 1" UNLESS OTHERWISE NOTED.
- ALL WATER HOUSE CONNECTIONS SHALL BE FOR AN INSIDE METER SETTING UNLESS NOTED ON PLANS.
- PAYMENT FOR SUCH REMOVAL SHALL BE INCLUDED IN THE UNIT PRICE BID FOR CONSTRUCTION OF THE MAIN.
- HOUSE(S) WITH THE SYMBOL "C.N.S." INDICATES THAT CELLAR CANNOT BE SERVED.
- ANY DAMAGE TO EXISTING FACILITIES DUE TO THE CONTRACTOR'S NEGLIGENCE SHALL BE REPAIRED AT THE CONTRACTOR'S EXPENSE.
- ANY COST INCURRED TO THE CONTRACTOR FOR TUNNELING OR BRACING AT POLES SHALL BE INCLUDED IN UNIT PRICES BID FOR CONSTRUCTION OF THE MAIN.
- FOR DETAILS NOT SHOWN ON THE DRAWINGS USE HOWARD COUNTY STANDARD DETAILS.
- FOR MATERIALS AND CONSTRUCTION METHODS USE HOWARD COUNTY STANDARD SPECIFICATIONS.
- THE EXISTING ZONING OF THE SITE IS: NEW TOWN
- ALL SANITARY SEWER MANHOLES ARE TO BE STANDARD MANHOLES PER HOWARD CO. DETAIL No. S131 UNLESS NOTED.
- THE SITE SHOWN HEREON IS OWNED BY HOWARD COUNTY RESEARCH AND DEVELOPMENT CORPORATION AND RECORDED AMONG THE LAND RECORDS IN LIBER 1535 FOLIO 193



WATER & SEWER CODE	
WATER CODE	H03
SEWER CODE	5758200

VICINITY MAP
SCALE: 1"=600'

CONTRACT NO. 34-1816-D

VILLAGE OF HICKORY RIDGE

SECTION 6 AREA 2

HOWARD COUNTY, MD.

DEPARTMENT OF PUBLIC WORKS

CONSTRUCTION SEQUENCE
SEDIMENT CONTROL PROCEDURES

- OBTAIN SEDIMENT CONTROL PERMIT (ARTICLE 15.05-3).
- CONSTRUCT CONTINUOUS SEDIMENT BARRIER FOR ALL DISTURBED AREAS NOT PROTECTED BY SEDIMENT TRAPS.
- CLEAR, GRUB & STRIP AS REQUIRED TO PROTECT STREAM FROM EROSION OF STORED TOPSOIL. SEPARATE TOPSOIL FROM SUBSOIL.
- CONSTRUCT PIPELINE.
- ALL EXCAVATED MATERIAL SHALL BE STOCKPILED ON HIGH SIDE OF TRENCH.
- RESTORE EROSION CONTROL STRUCTURES DISTURBED BY SEWER CONSTRUCTION.
- STABILIZE DISTURBED AREAS AS CONSTRUCTION PROGRESSES WITH TEMPORARY SEEDING & MULCHING (OR PERMANENT RESTORATION).
- COMPLETE PERMANENT RESTORATION WILL BE IN ACCORDANCE WITH ROAD CONSTRUCTION PLANS.
- ALL SEDIMENT CONTROL DEVICES SHALL REMAIN IN SERVICE UNTIL REMOVAL IS APPROVED BY THE S.C.S. INSPECTOR.
- RESTORATION (TEMPORARY OR PERMANENT) OF AN AREA BETWEEN MANHOLES SHALL FOLLOW WITHIN ONE WEEK OF PIPE LAYING IN THAT AREA.

BENCH MARKS

CEI BENCHMARK #109 ELEV. 341.64
 TOP OF P.K. NAIL NORTHEAST 270'± FROM INTERSECTION OF VISTA RD. AND NEWBERRY DR. 16' FROM NORTHWEST CURB.
 HOWARD CO. BENCHMARK #2340007 ELEV. 399.66
 HARRIS AZIMUTH (MONUMENT SET IN CONCRETE) AT SOUTHEAST CORNER OF VISTA RD. AND LONGVIEW RD. 50' FROM CURB OF VISTA RD. 15' FROM CURB OF LONGVIEW RD.

FOR LOCATION OF BENCH MARKS SEE DRAWINGS.

WASTEWATER TREATMENT	SAVAGE
TYPE OF LOTS	SINGLE FAMILY
No. OF LOTS	51
No. OF S.H.C.'s	51
No. OF W.H.C.'s	51
DRAINAGE AREA	MIDDLE PATUX.

ITEM	QUANTITIES		MATERIAL / SUPPLIER
	ESTIMATED	AS-BUILT	
SEWER MANHOLE	No. 7	7	ATLANTIC
8" SEWER	L.F. 1292		ATLANTIC / PVC
8" WATER	L.F. 1115	1046	GRIFFIN / D.I.P.
6" WATER	L.F. 480	481	GRIFFIN / D.I.P.
8" VALVE	No. 3	3	GRIFFIN /
6" VALVE	No. 2	3	GRIFFIN /
3/4" W.H.C.	L.F. 100	414	GRIFFIN / K. COOPER
1" W.H.C.	L.F. 895	676	GRIFFIN / K. COOPER
FIRE HYDRANT	4	4	MUELLER
SEWER H.C. (6")	830 L.F.		ATLANTIC / P.V.C.
8" x 6" REDUCER	2	2	GRIFFIN
8" D.I.P. SEWER	373 L.F.	373	GRIFFIN / D.I.P.

SEDIMENT CONTROL MEASURES FOR THIS CONTRACT WILL BE IMPLEMENTED IN ACCORDANCE WITH ARTICLE 15 OF THE STANDARD SPECIFICATIONS, AND ROAD CONSTRUCTION PLAN F-89-56

REVIEWED FOR HOWARD SOIL CONSERVATION DISTRICT AND MEETS TECHNICAL REQUIREMENTS

James M. Fisher 12-9-88
 SIGNATURE DATE

U.S. SOIL CONSERVATION SERVICE

THIS DEVELOPMENT PLAN IS APPROVED FOR SOIL EROSION AND SEDIMENT CONTROL BY THE HOWARD SOIL CONSERVATION DISTRICT.

APPROVED:
Stephen L. Fisher 12-9-88
 SIGNATURE DATE

DEPARTMENT OF PUBLIC WORKS
 HOWARD COUNTY, MARYLAND

James M. Fisher 12-2-88
 DIRECTOR OF PUBLIC WORKS DATE
John H. Himmil 12/5/88
 CHIEF - BUREAU OF UTILITIES DATE

CENTURY ENGINEERING, INC.
 CONSULTING ENGINEERS - PLANNERS
 TOWSON, MARYLAND 21204 CEI 87034

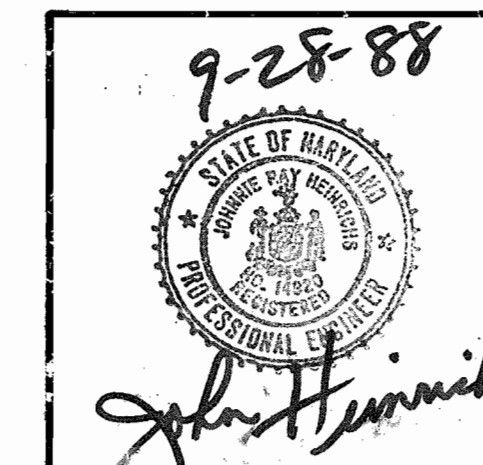
DATE	NO.	DESCRIPTION
2-10-89	2	CHANGE OF SEWER QUANTITY
11-1-88	1	ADD MISC. ADD EXISTING CONTRACT NOS.

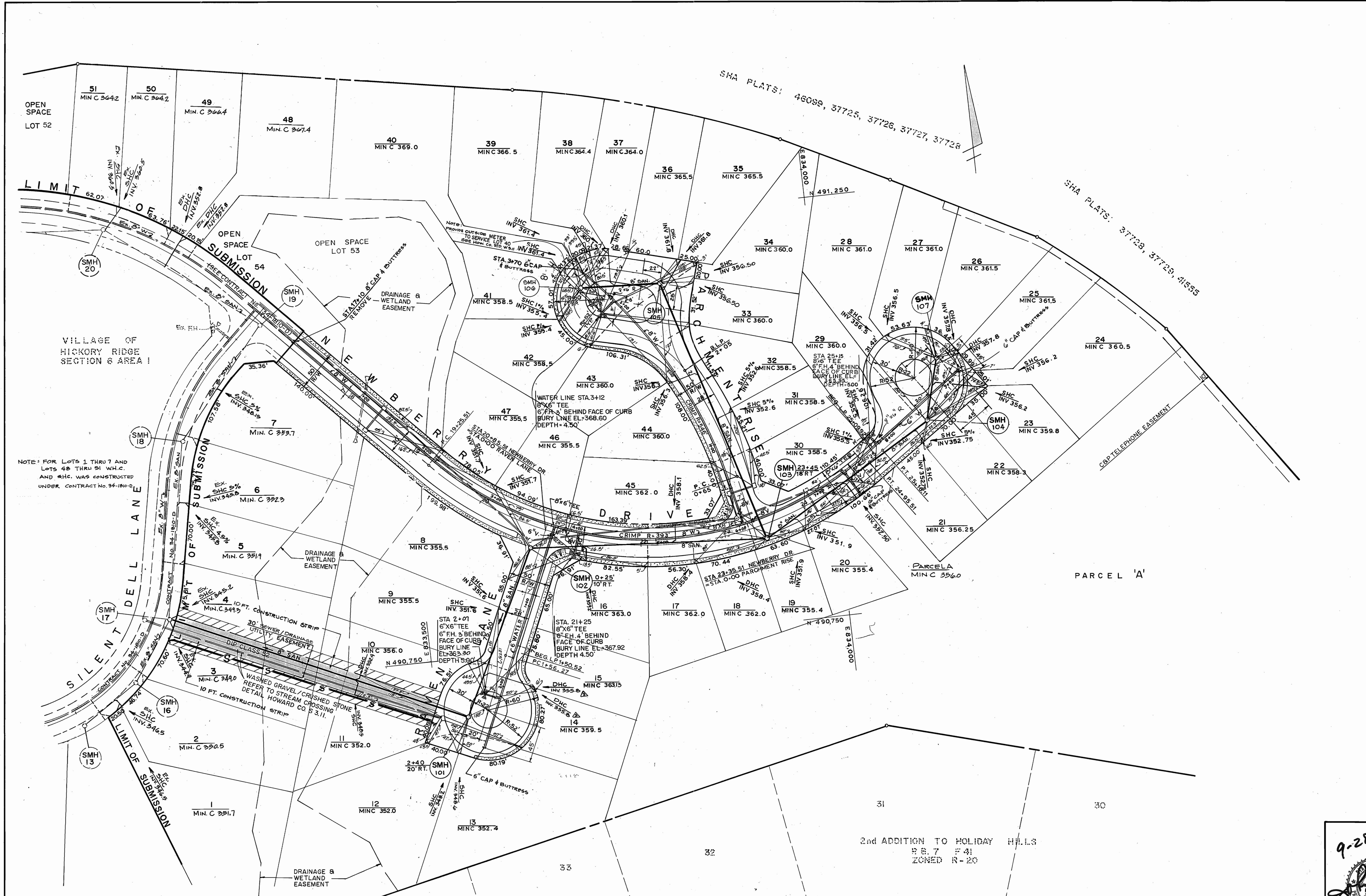
TITLE SHEET
 WATER & SEWER MAINS

VILLAGE OF HICKORY RIDGE
 SECTION 6 AREA 2 PARCEL 45
 CONTRACT NO. 34-1816-D

DRAWING NO. 1 OF 3 SCALE 1"=600'

AS-BUILT 12/5/88





NOTE: FOR LOTS 1 THRU 7 AND LOTS 48 THRU 51 W.H.C. AND S.H.C. WAS CONSTRUCTED UNDER CONTRACT NO. 34-1816-D

DEPARTMENT OF PUBLIC WORKS
HOWARD COUNTY, MARYLAND

Robert Benner 12-2-88
DIRECTOR OF PUBLIC WORKS — DATE

Robert Benner 12-2-88
CHIEF - BUREAU OF UTILITIES — DATE

CENTURY ENGINEERING, INC.
CONSULTING ENGINEERS - PLANNERS

TOWSON, MARYLAND 21204 CEI 87034

DATE	NO.	DESCRIPTION
1-4-89	3	CHANGE INV. 355.0 - LOTS 14 & 15
2-10-89	2	RELOCATE MH 104, 106 & 107
11-1-88	1	ADD MH 107 & ADD FH STA. 21+25

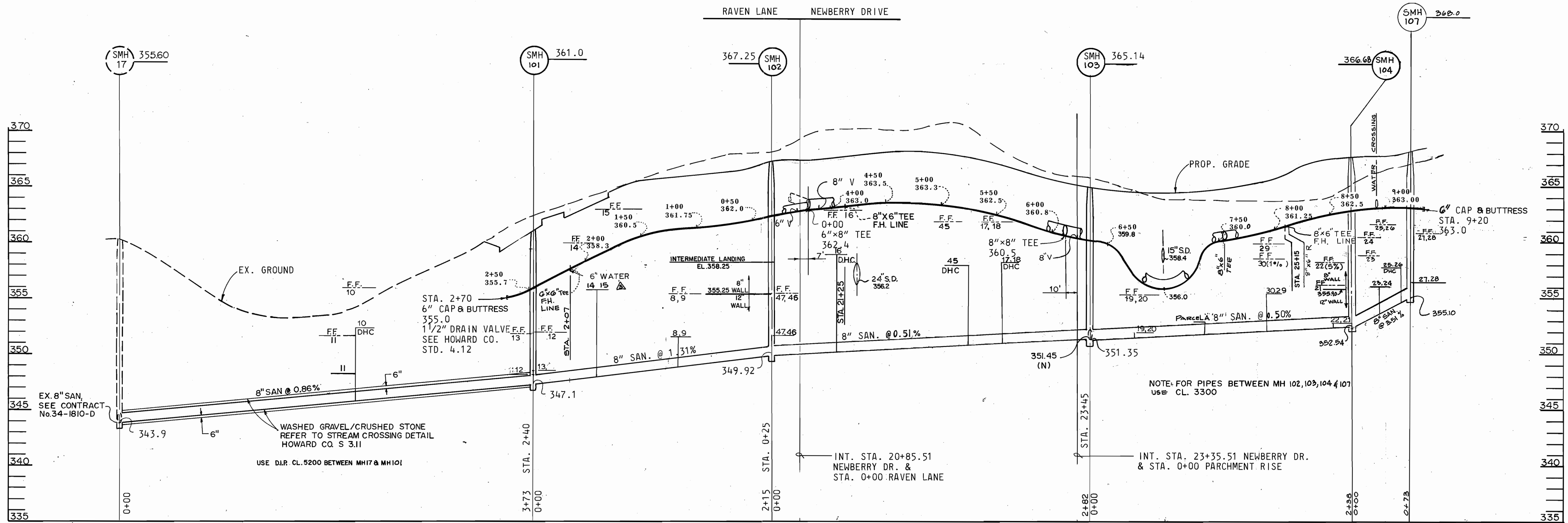
PLAN
WATER & SEWER MAINS

VILLAGE OF HICKORY RIDGE
SECTION 6 AREA 2 PARCEL 45
CONTRACT NO. 34-1816-D

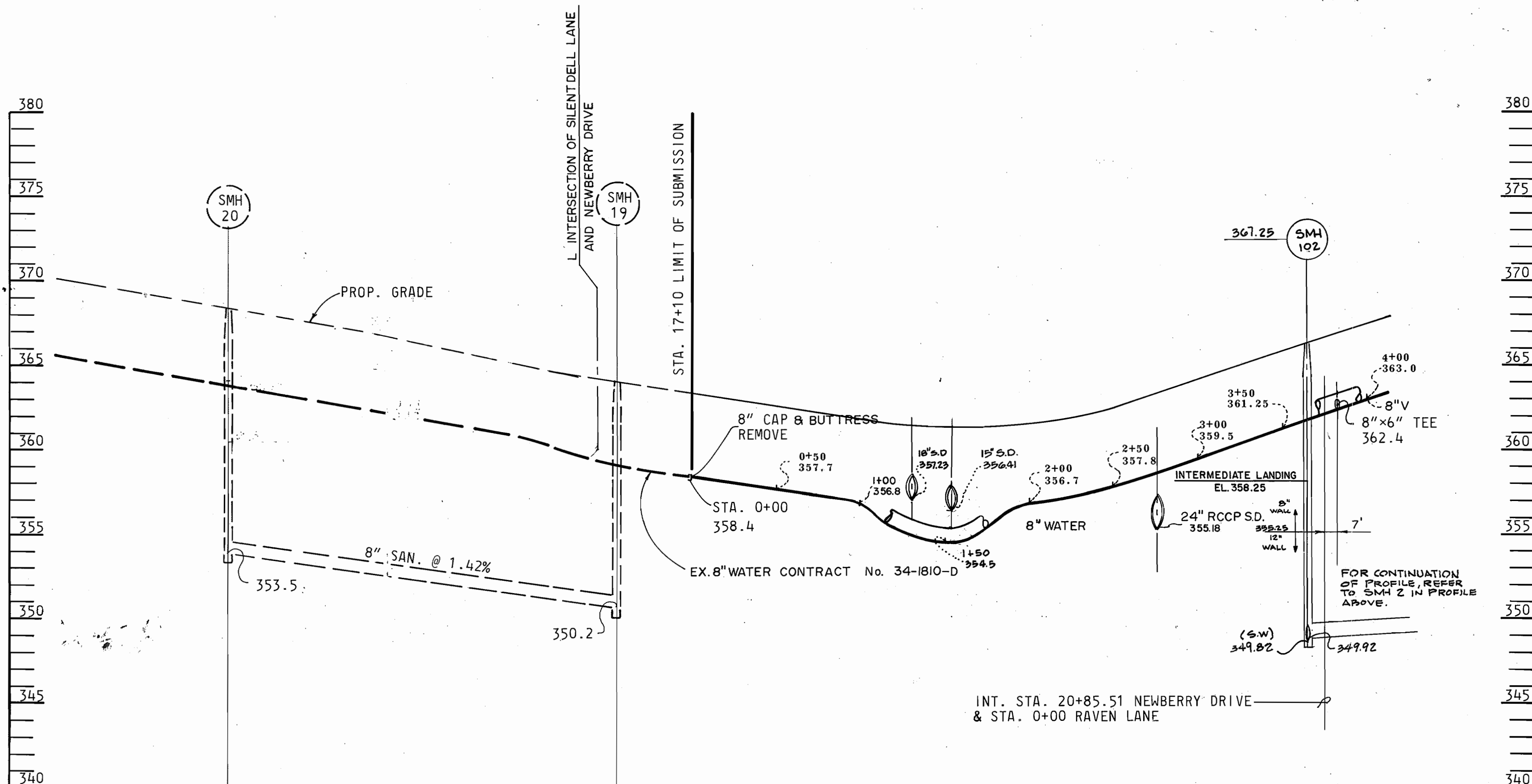
DRAWING NO. 2 OF 3
SCALE 1"=50'

9-28-88
[Signature]

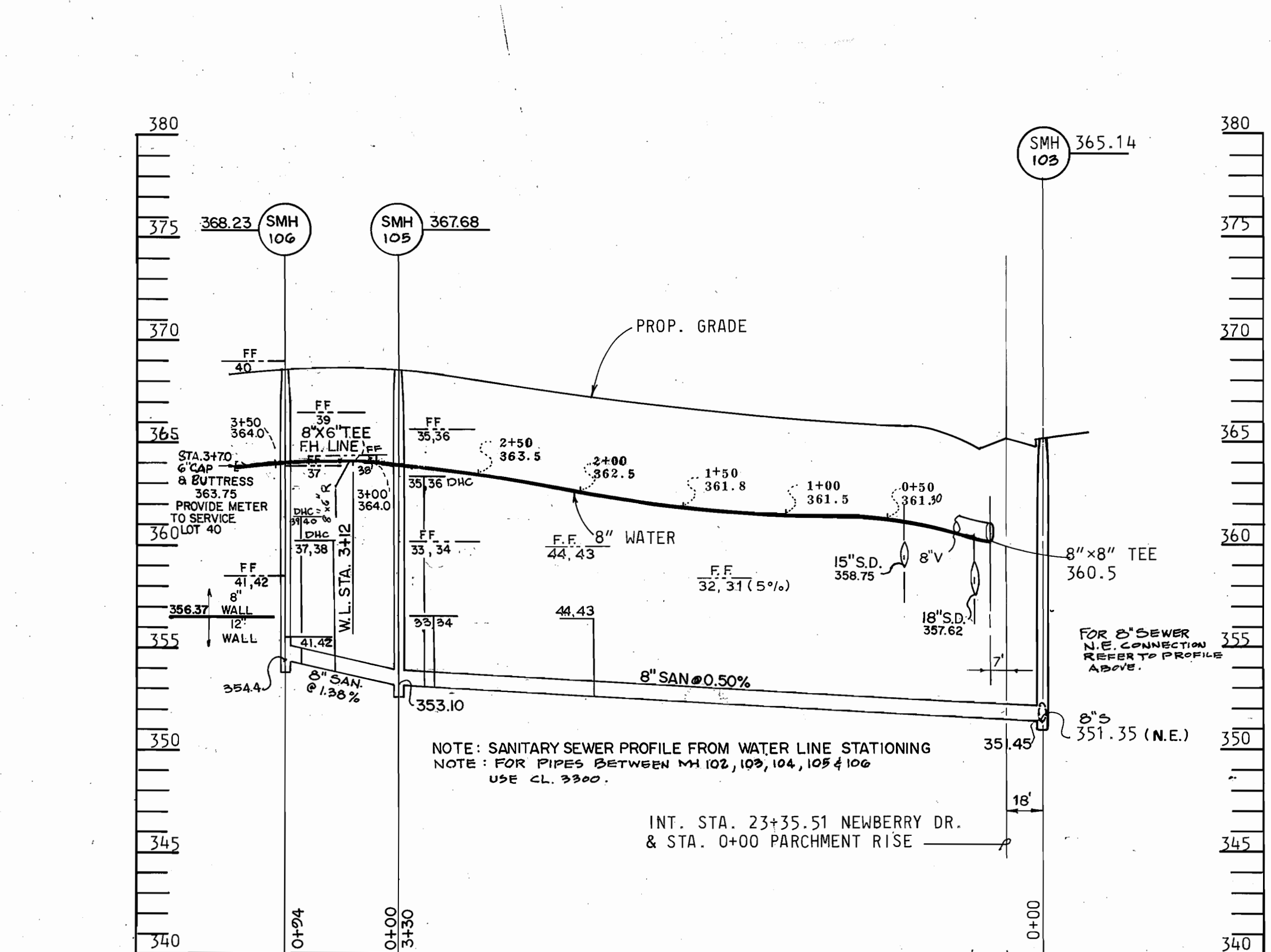
AS-BUILT 12/15/89



RAVEN LANE NEWBERRY DRIVE



NEWBERRY DRIVE



PARCHMENT RISE

DEPARTMENT OF PUBLIC WORKS
HOWARD COUNTY, MARYLAND

James P. ... 12/16/88
DIRECTOR OF PUBLIC WORKS — DATE

Richard ... 12/2/88
CHIEF - BUREAU OF UTILITIES — DATE

CENTURY ENGINEERING, INC.
CONSULTING ENGINEERS - PLANNERS
TOWSON, MARYLAND 21204 CEI 87034

DATE	NO.	DESCRIPTION
1-4-89	3	CHANGE INV. 3558 - LOTS 14 & 15
2-10-89	2	CHANGE PROFILE BETWEEN MH 102, 103, 104 & 105
11-1-88	1	ADD MH 102 ADD PH 9A 21+25, 9M 2 INTERMEDIATE LANDING

PROFILES
WATER & SEWER MAINS

VILLAGE OF HICKORY RIDGE
SECTION 6 AREA 2 PARCEL 45
CONTRACT NO. 34-1816-D

DRAWING NO. 3 OF 3
SCALE HOR. 1"=50' VER. 1"=5'

