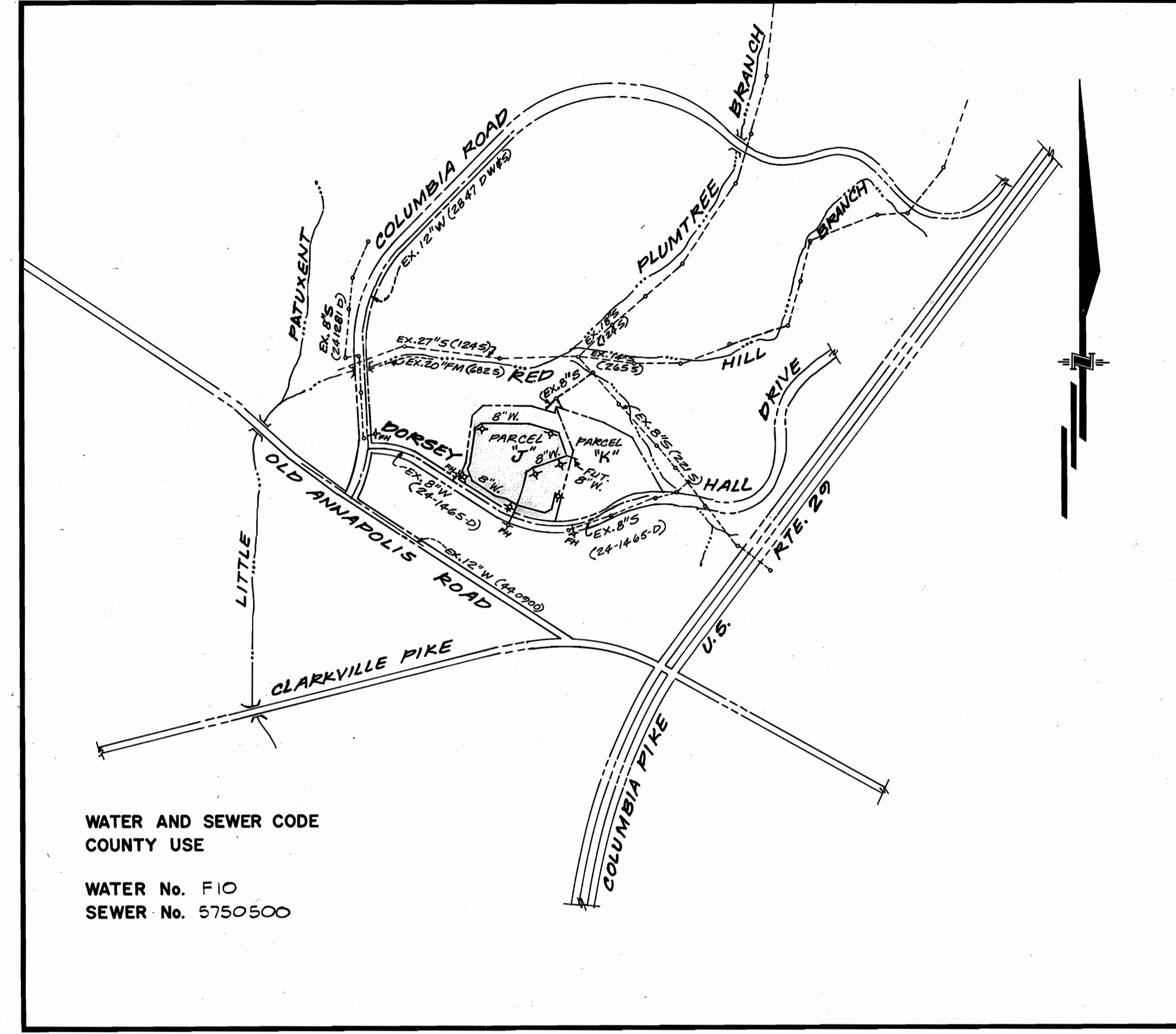


TYPE OF BUILDING	CONDOMINIUM APARTMENTS
NUMBER OF UNITS	132
NUMBER OF SHC's	
NUMBER OF WHC's	15
DRAINAGE AREA	Etc. 108 Pumping Station

GENERAL NOTES

- Approximate locations of existing mains are shown. The contractor shall take all necessary precautions to protect existing mains and services and maintain uninterrupted supply. Any damage incurred shall be repaired immediately to the satisfaction of the Engineer, at the contractor's expense.
- All horizontal controls are based on Maryland State Coordinates.
- All vertical controls are based on U.S.G.S. Datum.
- All pipe elevations shown are invert elevations.
- Clear all utilities by a minimum of 6". Clear all poles by 2'-0" minimum or tunnel as required. Any cost incurred by the contractor for tunnelling or bracing at poles shall be included in unit prices bid for construction of the main.
- For details not shown on the drawings, use Howard County Standard Details.
- For materials and construction methods, use Howard County Standard Specifications & Howard County Design Manual, Volume IX. The Contractor shall have a copy of Volume IX on the job.
- Contractor shall locate existing utilities a minimum of two (2) weeks in advance of construction operations in the vicinity of proposed utilities, at his own expense.
- Contractor shall notify the following utilities or agencies at least five (5) working days before starting work shown on these plans.

State Highway Administration	531-5533	Baltimore Gas & Electric Company	
"Miss Utility"	1-559-0100	Contractor Services	561-2585
Chesapeake & Potomac (C&P)		Underground Damage Control	234-5621
Telephone Company	725-9976	Trouble-shooting	298-9013
Colonial Pipeline Company	795-1390	Bureau of Utilities, Howard County	992-2366
- Trees are to be protected from damage to maximum extent. Trees located within the construction strip are not to be removed or damaged by the contractor.
- Contractor shall remove trees, stumps and roots along line of excavation as directed by the Engineer. Payment for such removal shall be included in the unit price bid for construction of the main.
- Place regulation "Men Working" and warning signs as required to comply with Maryland State Highway Administration Manual of Traffic Control for Highway Construction and Maintenance Operations.
- All water mains to be D.I.P., Class 52 Only.
- Top of all water mains to have a minimum of 3'-1/2' cover unless otherwise noted.
- Valves adjacent to tees shall be strapped to tees.
- Block all fittings with concrete.
- Bury line elevations on fire hydrants shall be set to the elevations shown on the drawings. All fire hydrants shall be strapped and buttressed with concrete in accordance with standard details. Soil around the fire hydrant to be compacted in accordance with Sections 10.03 and 10.08 of the Standard Specifications.
- All water house connections shall be for an outside meter setting. Locations of meter vaults are shown thus: \circ .
- The contractor shall not operate any water main valves on the existing system.
- ~~Small Copper Water House Connections, utilize flared type fittings only.~~
- All sewer mains shall be C.S.P.X., V.C.P.X., R.C.S.P., P.V.C. or A.C.P.-Class 2400 unless otherwise noted.
- The contractor shall provide a joint in all sewer mains within 2'-0" of exterior manhole wall.
- All manholes shall be 4'-0" inside diameter, unless otherwise noted.
- 12" and 16" manhole wall thicknesses shown on profiles pertain to brick manholes only.
- Manholes designated W.T. in plan and profile shall have watertight frames and covers. (See Standard Detail G.5.52). Where watertight manhole frame and cover is used, set top of frame 1'-6" above finished grade. (See Standard Detail G.5.41).
- House(s) with the symbol "CNS" indicates that cellar cannot be served.
- Water main and water house connection lines must have a minimum of one foot separation from either sanitary sewer or sewer house connections as they cross. Except at crossings, water and sewer lines shall have a minimum horizontal separation of 10'.
- All D.I.P. fittings shall be in accordance with A.W.W.A. specification C-153 ductile iron compact fittings, 3-inch through 12-inch for water and other liquids.



VICINITY MAP
SCALE: 1" = 600'

WATER AND SEWER CODE
COUNTY USE

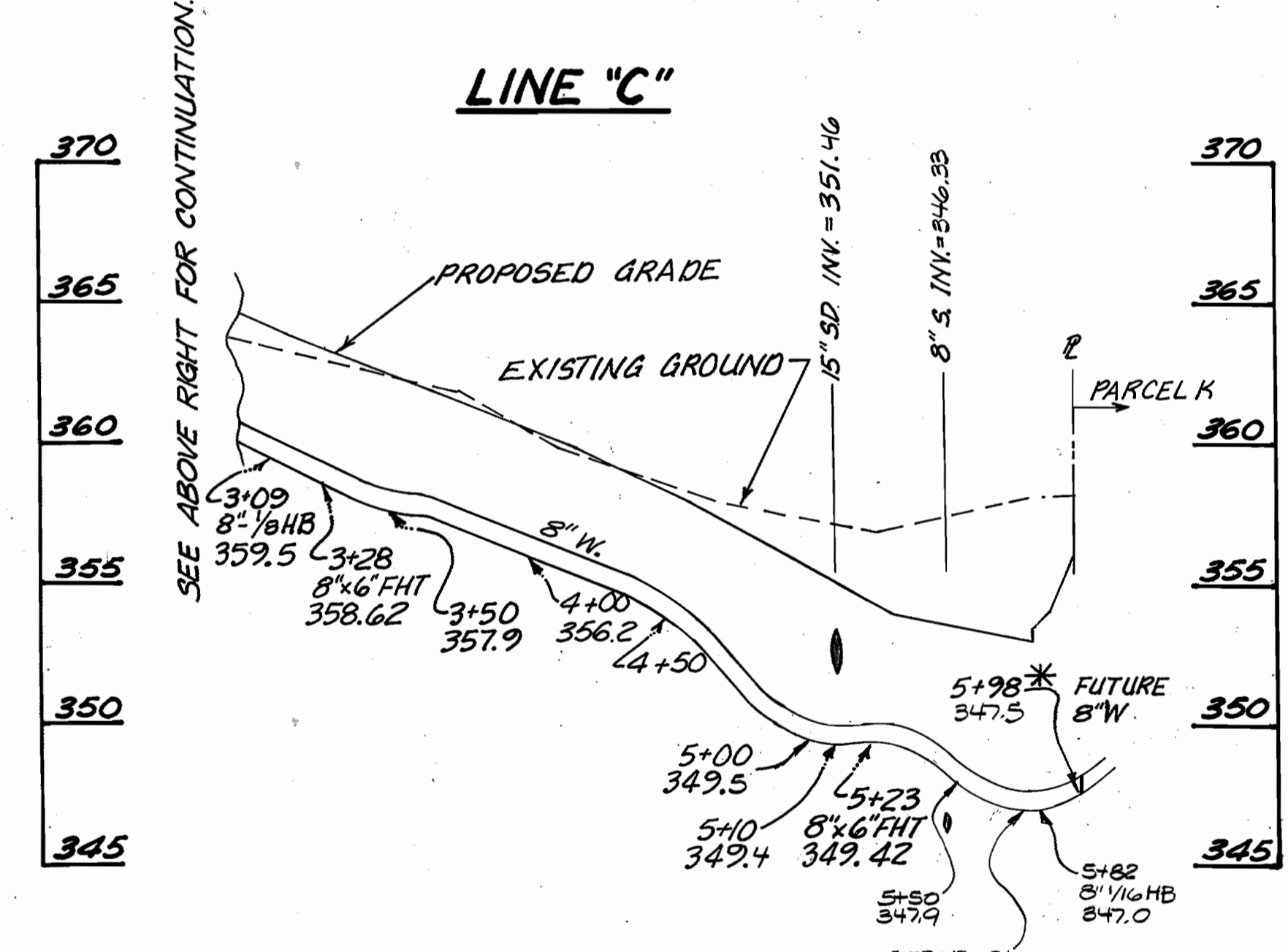
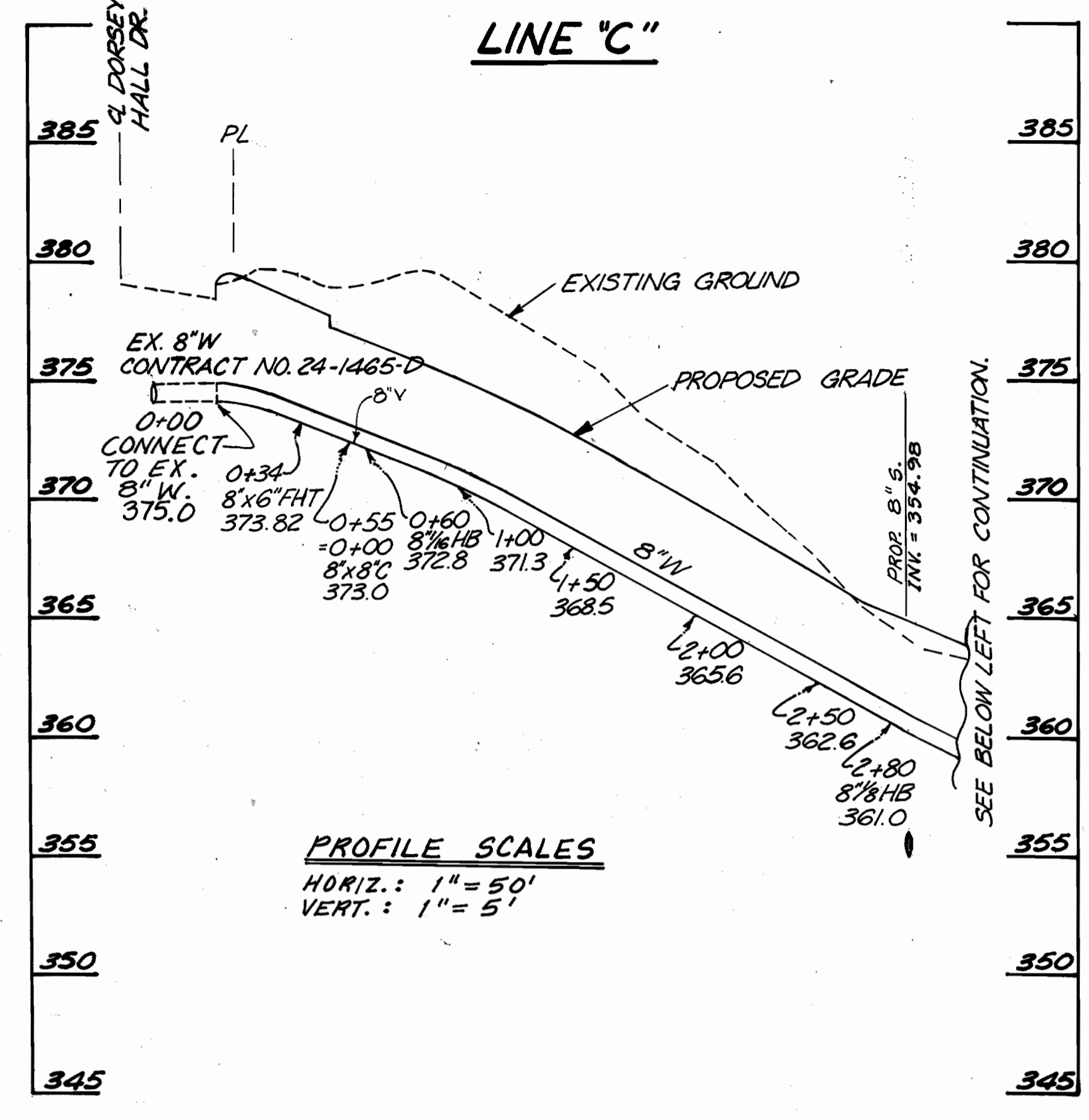
WATER No. F10
SEWER No. 5750500

CONTRACT NO. 24-1813 D

**DORSEY HALL
PARCEL J, SECTION 2 AREA 3
HOWARD COUNTY, MARYLAND
DEPARTMENT OF PUBLIC WORKS**

ITEM	QUANTITIES		MATERIAL / SUPPLIER
	ESTIMATED	AS-BUILT	
8" S	10 L.F.	10 L.F.	
8" W	2247 L.F.	2239 L.F.	MUNICIPAL & CONTRACTOR SALES INC.
4" Dia. MH	1 EA.	1	
F.H.	7 EA.	7	MUNICIPAL & CONTRACTOR SALES INC.
2" METER VAULTS	15 EA.	14	" " " "
8" V.	4 EA.	4	" " " "
2" W.H.C.	259 L.F.	248 L.F.	" " " "
6" W		64 L.F.	" " " "

WATER & SEWER AS-BUILTS



* IF 8" W IS EXISTING ON PARCEL K, CONNECT TO EX. 8" W. OTHERWISE PROVIDE 8" CAP & BUTTRESS.

Sediment Control Measures will be implemented in accordance with Article No. 15 of the Specifications & with S.D.P. 88-217, Drawings 4 & 5. Sediment & Erosion Control.

REVIEWED FOR HOWARD SOIL CONSERVATION DISTRICT AND MEETS TECHNICAL REQUIREMENT.
Signature: [Signature] DATE: 8/12/88
U.S. SOIL CONSERVATION SERVICE

THIS DEVELOPMENT PLAN IS APPROVED FOR SOIL EROSION AND SEDIMENT CONTROL BY THE HOWARD SOIL CONSERVATION DISTRICT.

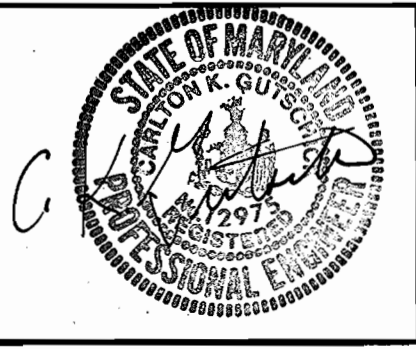
APPROVED: [Signature] DATE: 8/12/88
HOWARD S.C.D.

DEPARTMENT OF PUBLIC WORKS
HOWARD COUNTY, MARYLAND

Director of Public Works: [Signature] DATE: 8/22/88
Chief, Bureau of Engineering: [Signature] DATE: 8/12/88
Chief, Bureau of Utilities: [Signature] DATE: 8-10-88
Chief, Land Development Div.: [Signature] DATE: 8/12/88

GW GUTSCHICK LITTLE & WEBER, P.A.
ENGINEERS, PLANNERS, SURVEYORS

3909 NATIONAL DRIVE, SUITE 250 - BIRTONSVILLE OFFICE PARK
BIRTONSVILLE, MD. 20866
(301) 421-4024



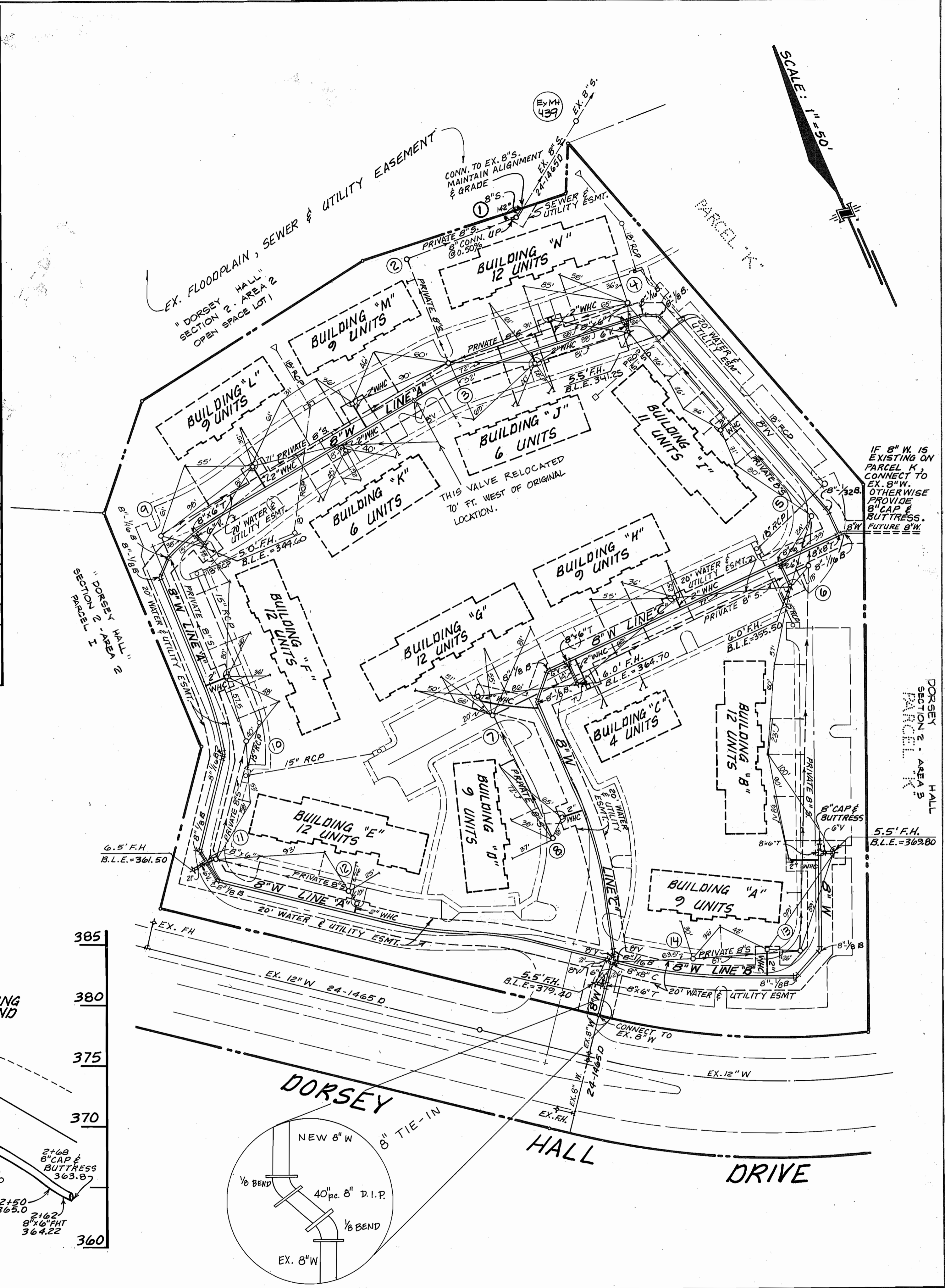
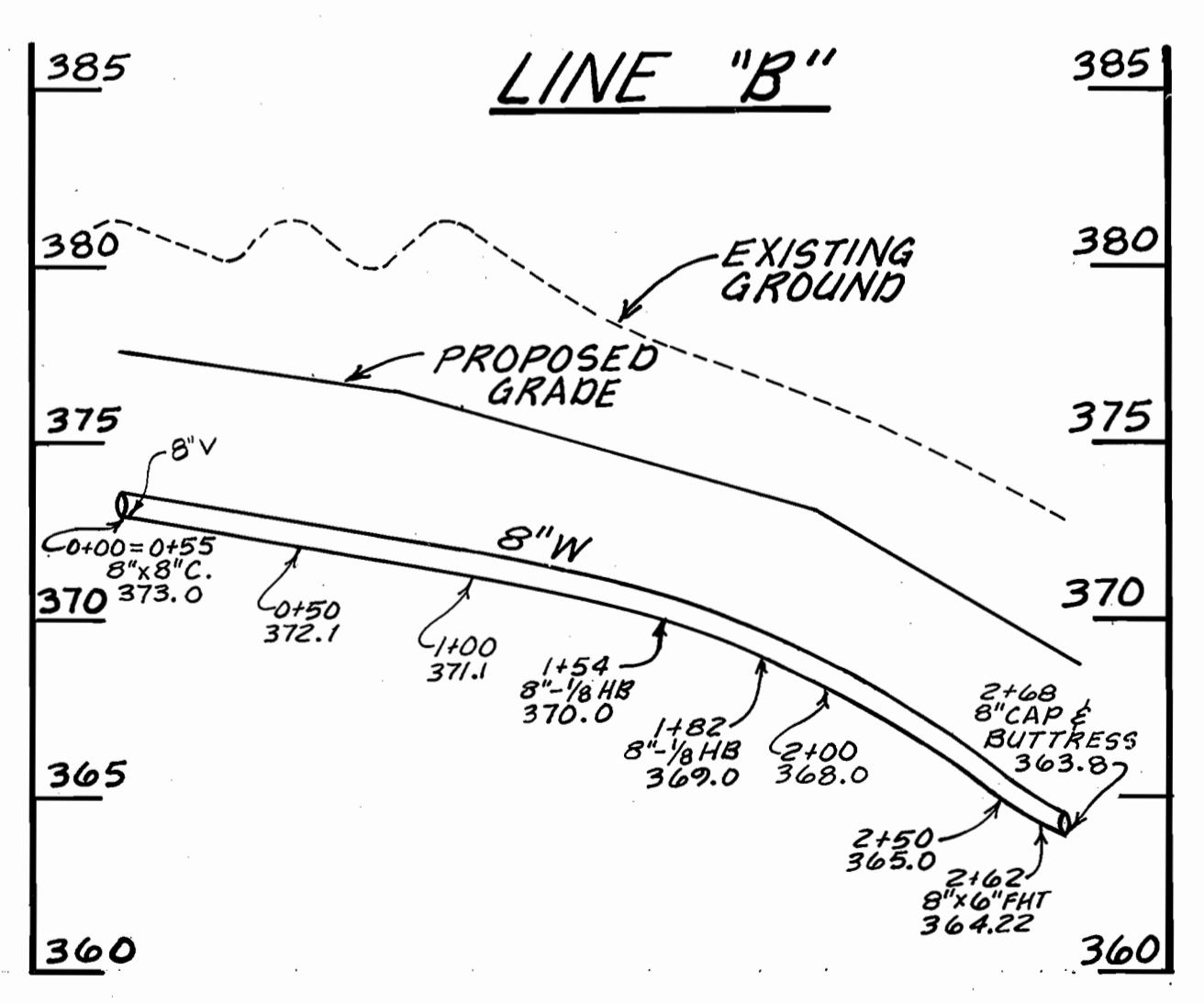
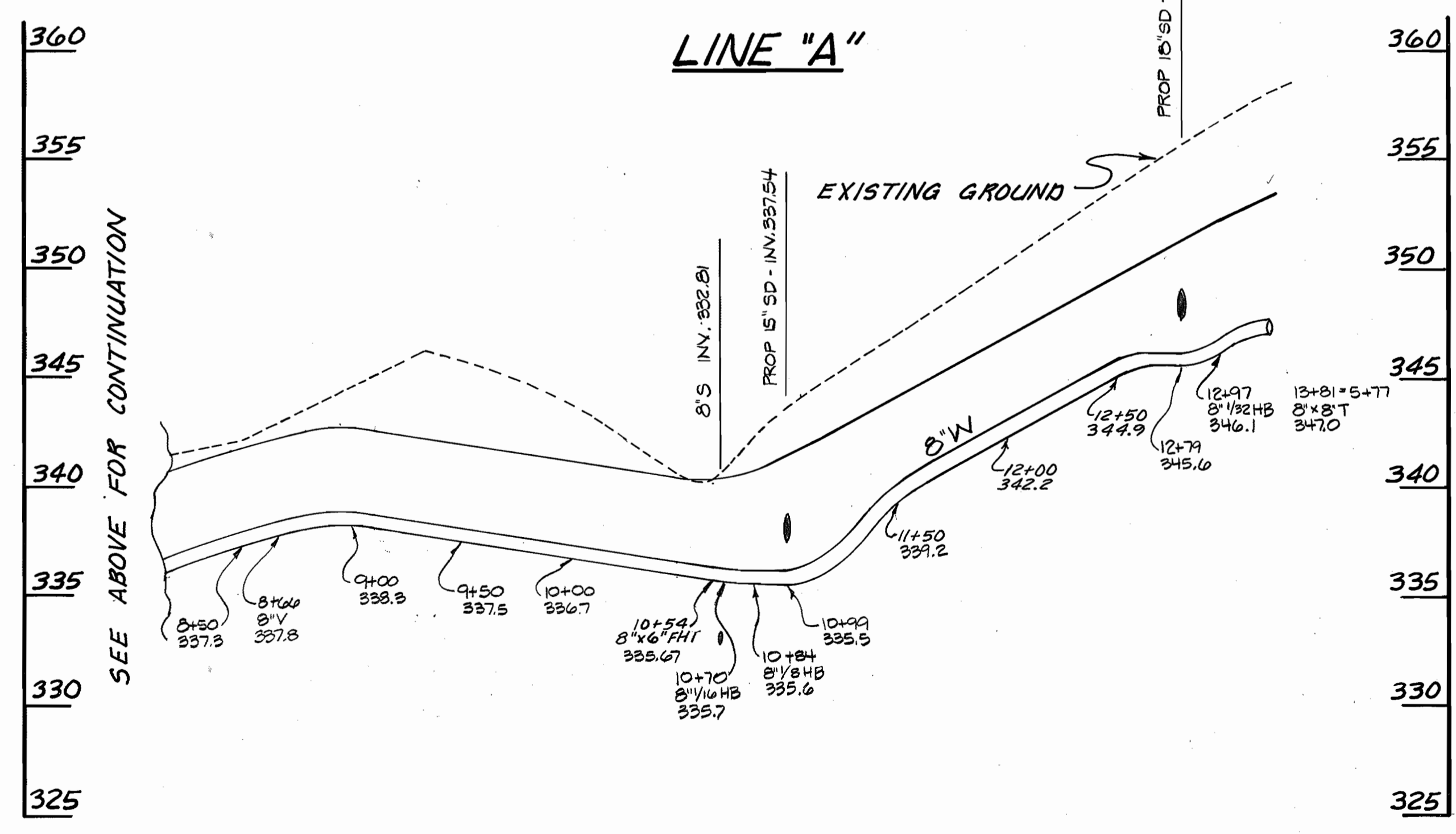
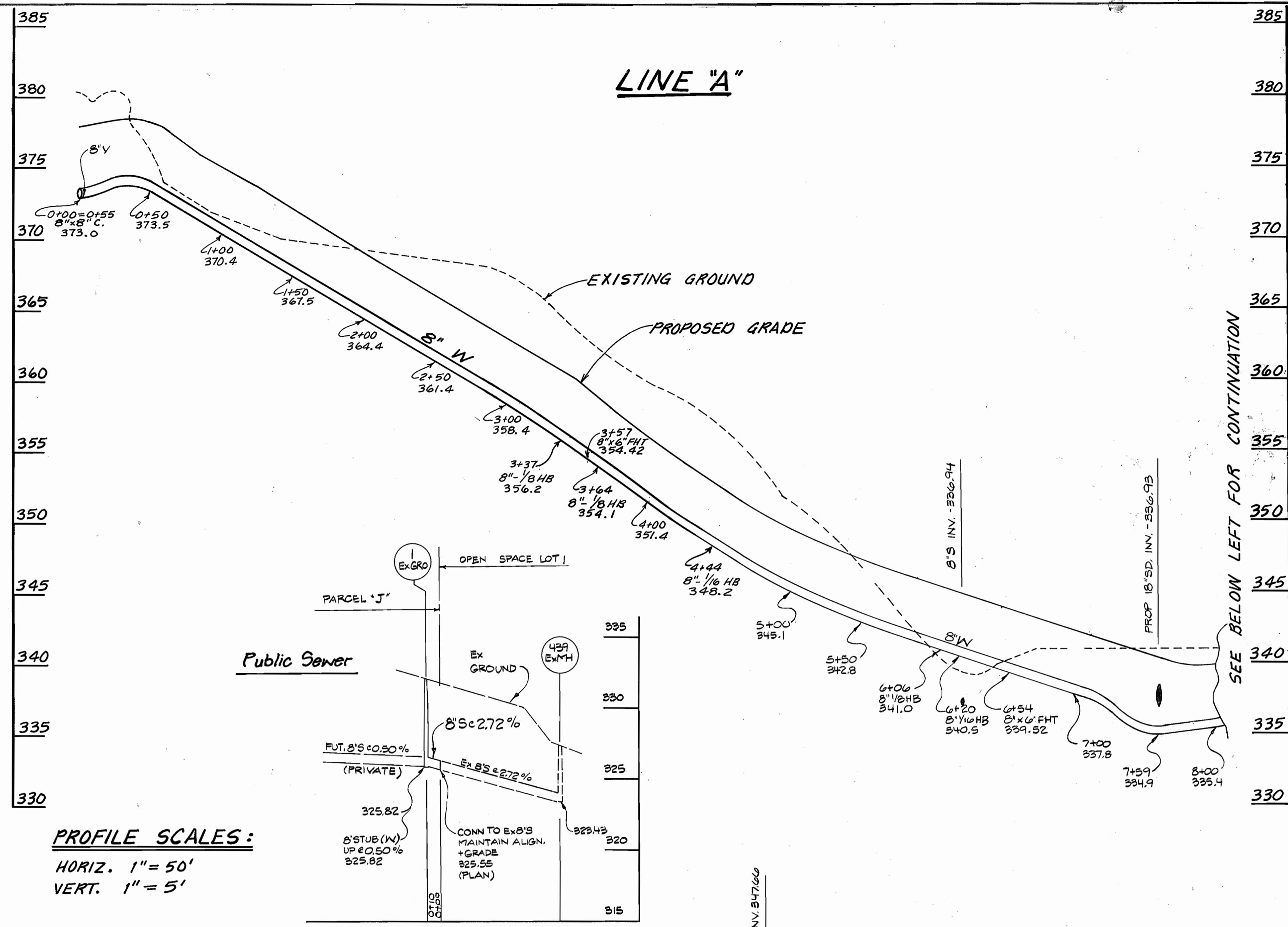
DES: C.K.G.	
DRN: R.R.S.	
CHK: C.K.G.	
DATE: JUNE 1988	
BY: []	NO. []
REVISION	
DATE	

TITLE SHEET &
WATER MAIN PROFILE

600' SCALE MAP NO. 30 BLOCK NO. 4

DORSEY HALL
PARCEL J
SECTION 2 AREA 3
2ND ELECTION DISTRICT
CONTRACT NO. 24-1813 D

SCALE AS SHOWN
SHEET 1 OF 2



DEPARTMENT OF PUBLIC WORKS
 HOWARD COUNTY, MARYLAND

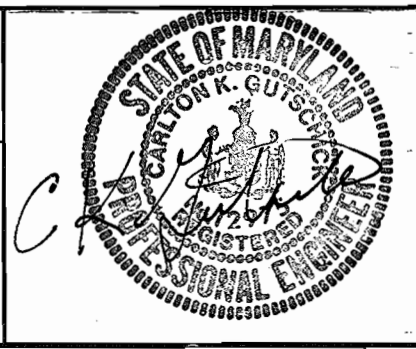
[Signature] DIRECTOR OF PUBLIC WORKS
 DATE 8-10-88

[Signature] CHIEF, BUREAU OF ENGINEERING
 DATE 8-10-88

[Signature] CHIEF, LAND DEVELOPMENT DIV.
 DATE 8/16/88

GW GUTSCHICK LITTLE & WEBER, P.A.
 ENGINEERS, PLANNERS, SURVEYORS

3909 NATIONAL DRIVE SUITE 230 BURTONTOWNE OFFICE PARK
 BURTONTOWNE, MD. 20866
 (301) 421-4024



DES: DPS			
DRN: RTN			
CHK: CKG			
DATE: JUNE 1988	BY	NO.	REVISION

PLAN & PROFILES OF
 WATER MAINS

600' SCALE MAP NO. 30 BLOCK NO. 4

DORSEY HALL
 PARCEL J
 SECTION 2, AREA 3
 2ND ELECTION DISTRICT
 CONTRACT NO. 24-1813D

SCALE AS SHOWN
 SHEET 2 OF 2