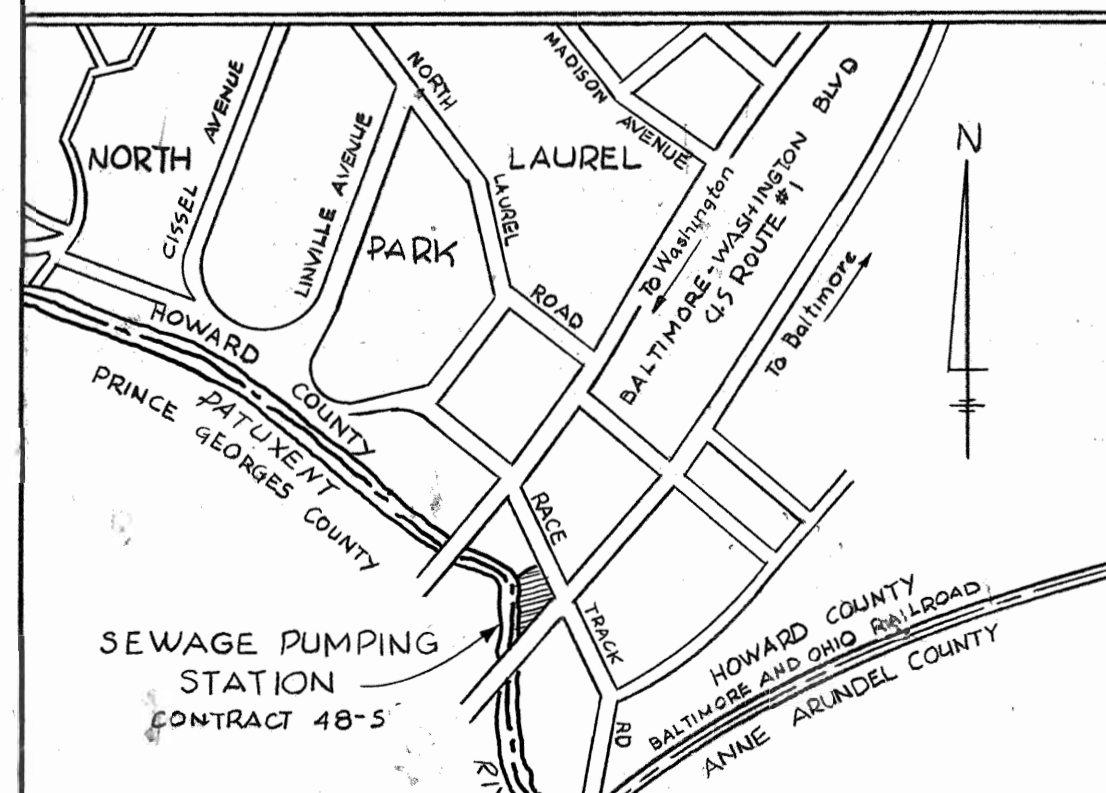
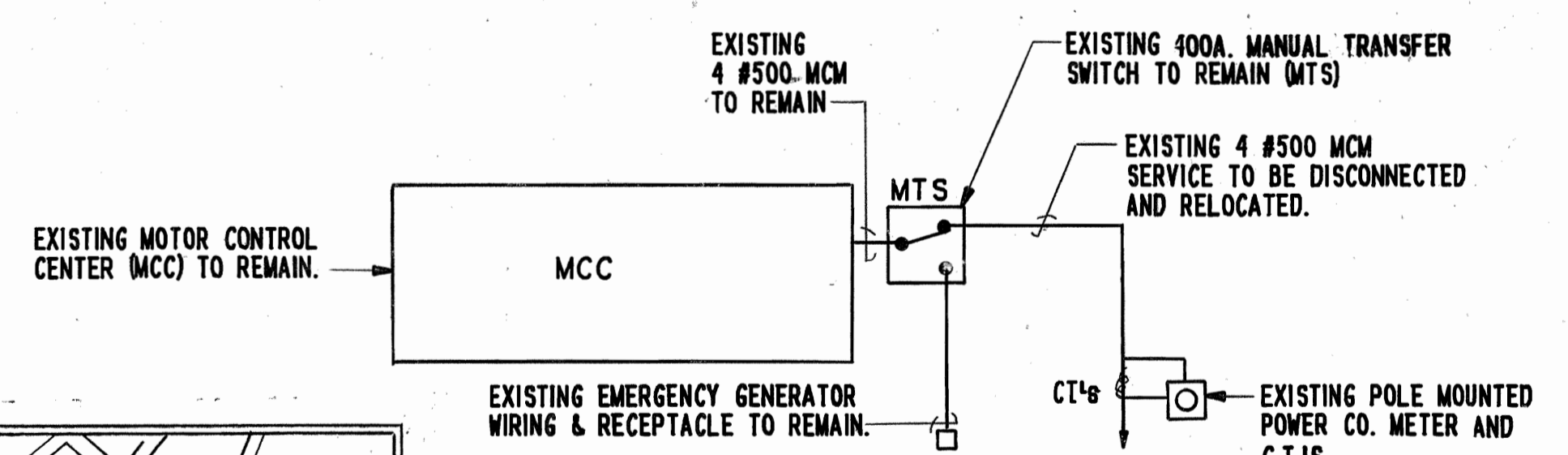
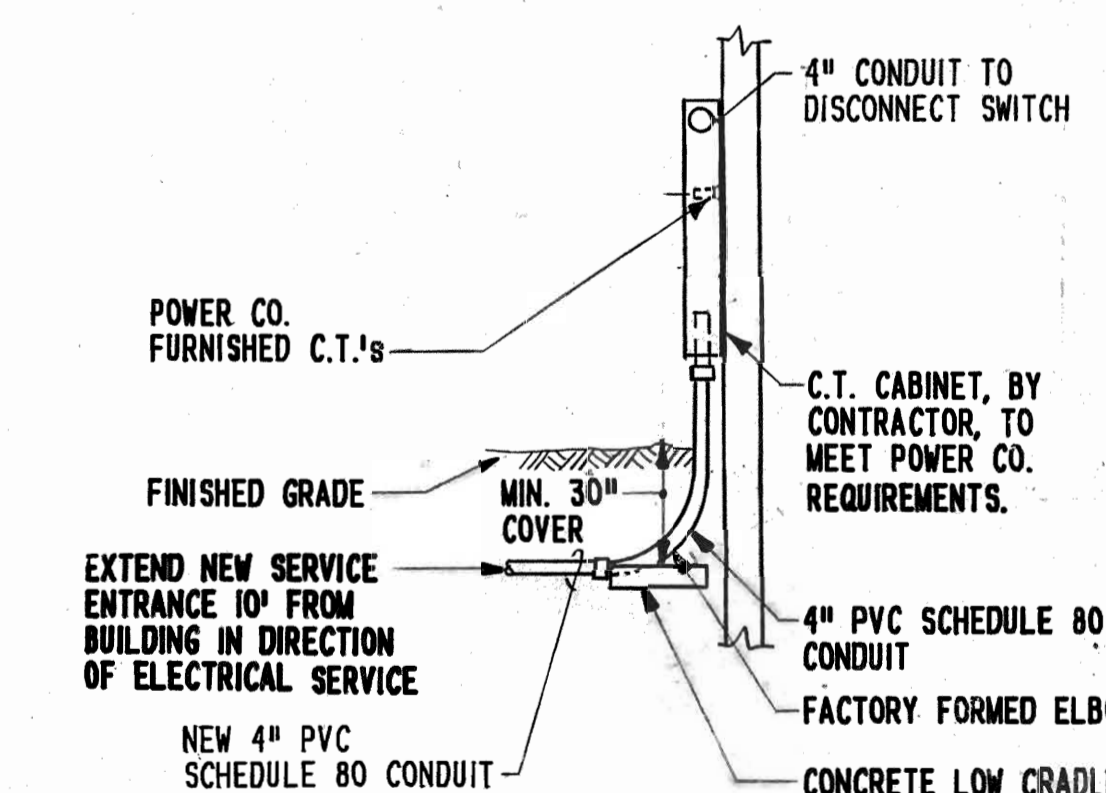
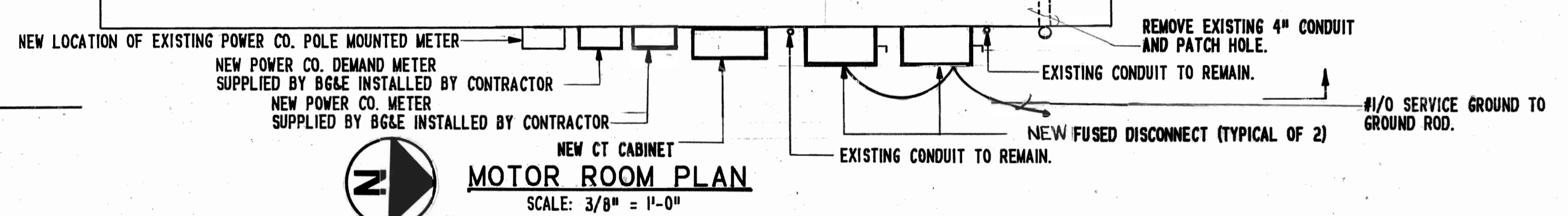
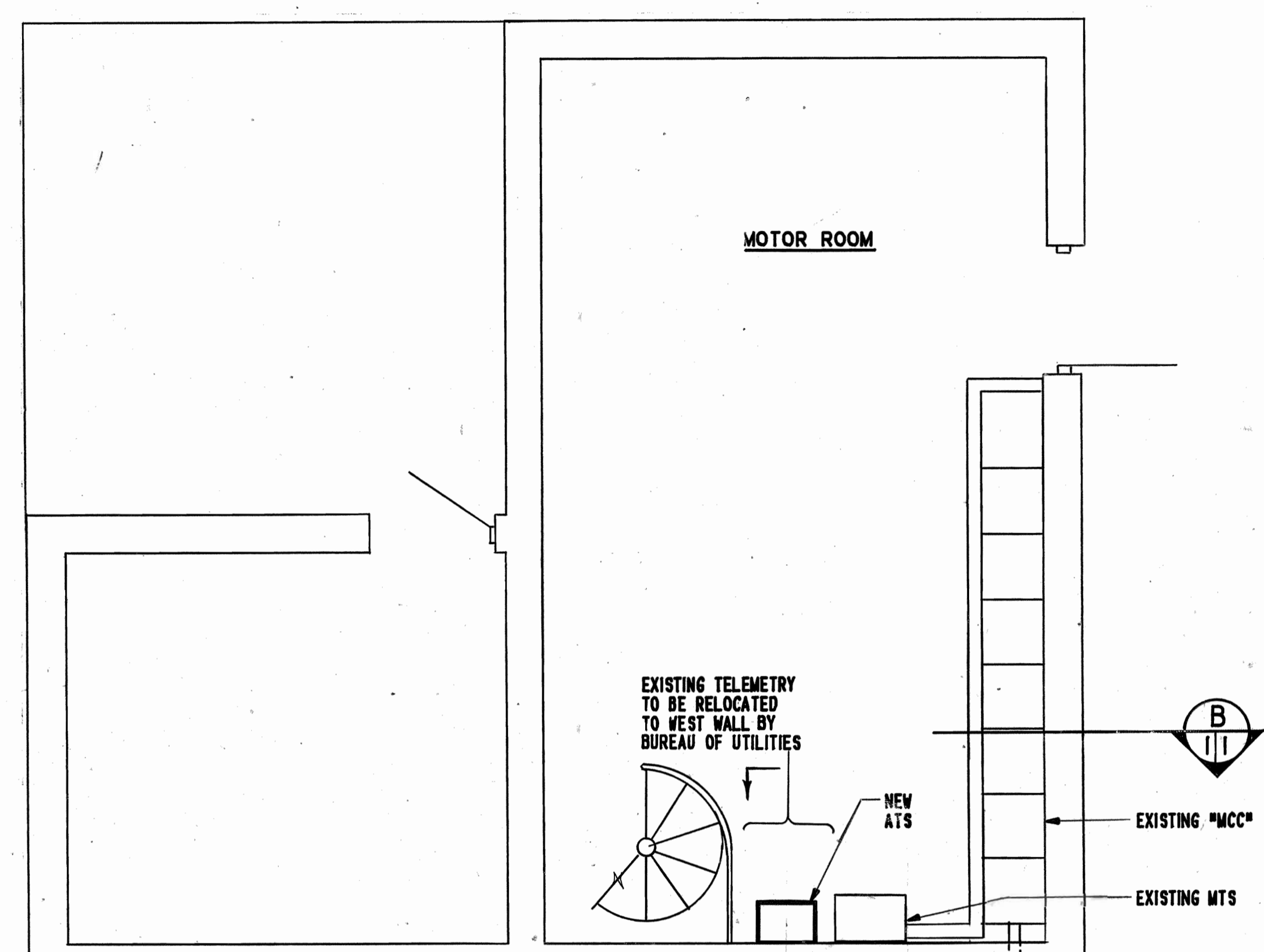
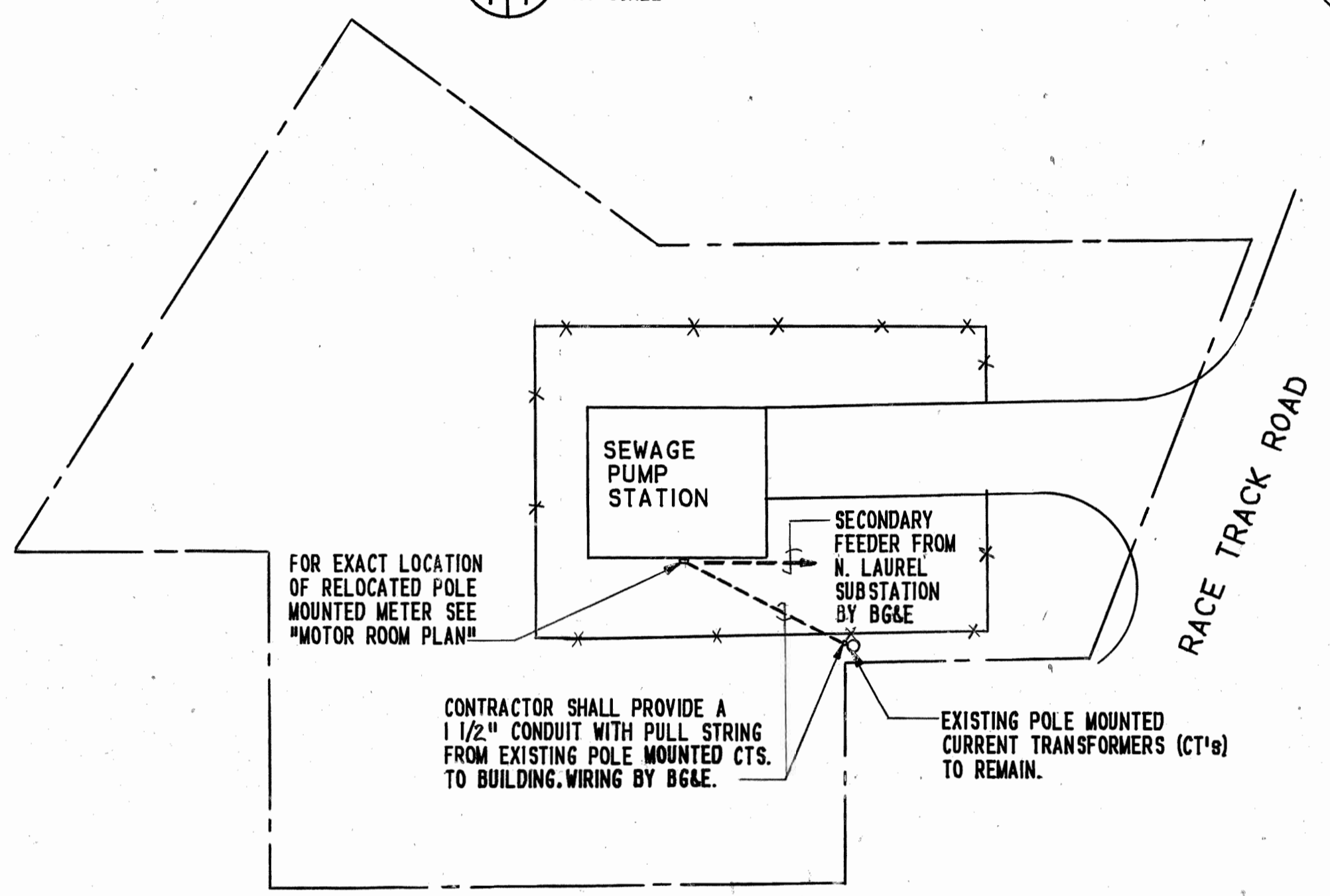
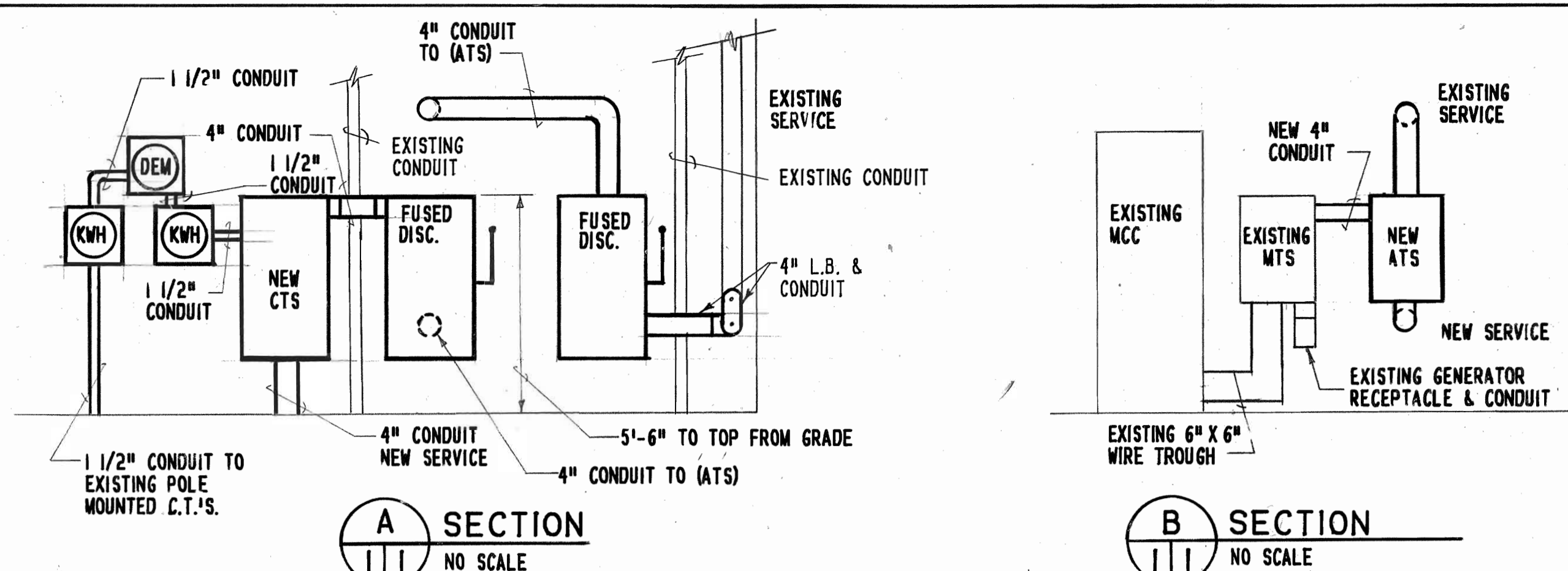


LEGEND

- CONDUIT - UNDER GROUND
- DISCONNECT SWITCH - FUSED MOUNTING HEIGHT 5'-6" TO TOP.

GENERAL NOTES

1. CONTRACTOR WILL PROVIDE A NYLON FISHTAPE IN EACH EMPTY CONDUIT. LEAVE 18 INCHES EXTENDING FROM EACH END OF CONDUIT.
2. BG&E WILL REMOVE EXISTING POLE MOUNTED METER.
3. ALL WORK PERFORMED BY BG&E IS NOTED. ALL OTHER WORK BY CONTRACTOR.
4. CONTRACTOR SHALL CONTACT BG&E TO DETERMINE C.T. CABINET REQUIREMENTS (RAY CAIN - (301) 298-1914)
5. CONTRACTOR TO PROVIDE GROUND RODS AS REQUIRED TO ACHIEVE NEC MINIMAL 25 OHMS.
6. CONTRACTOR SHALL PROVIDE A 1/0 BARE COPPER GROUND WIRE FROM GROUND ROD TO NEAREST INCOMING WATER PIPE AS REQUIRED BY NEC. 250-81.
7. DISCONNECT EXISTING GROUND CONDUCTOR AND REMOVE ANY GROUND STRAPS, ETC. FROM EXISTING INCOMING SERVICE. EQUIPMENT SHALL BE PROPERLY GROUNDED TO NEW SYSTEM (SEE NOTE 5).



<p>DEPARTMENT OF PUBLIC WORKS HOWARD COUNTY, MARYLAND</p> <p>DATE: 10-28-88 CHIEF, BUREAU OF UTILITIES</p>	<p>KIDDE CONSULTANTS, INC. ENGINEERS • SURVEYORS • PLANNERS</p> <p>1020 CROWELL BRIDGE ROAD, BALTIMORE, MARYLAND 21204 TELEPHONE: (301) 321-5700</p>		<p>DES: S.E.A. DRN: M.A.O. CHK: S.F.B. DATE: 6/13/88</p>	<p>BY: NO. REVISION DATE</p>	<p>600' SCALE MAP NO. BLOCK NO.</p>	<p>SECONDARY POWER NORTH LAUREL PUMPING STATION CONTRACT PROJECT NO. W-8688 CONTRACT NO. 20-1808 ELECTION DISTRICT NO. 6 HOWARD COUNTY, MARYLAND</p>	<p>E-1</p> <p>SCALE AS SHOWN</p> <p>SHEET 1 OF 1</p>
---------------------------------------------------------------------------------------------------------------------------	---------------------------------------------------------------------------------------------------------------------------------------------------------------------	--	----------------------------------------------------------------------	------------------------------	-------------------------------------	----------------------------------------------------------------------------------------------------------------------------------------------------------------------------------------	------------------------------------------------------