

GENERAL NOTES

PART 1

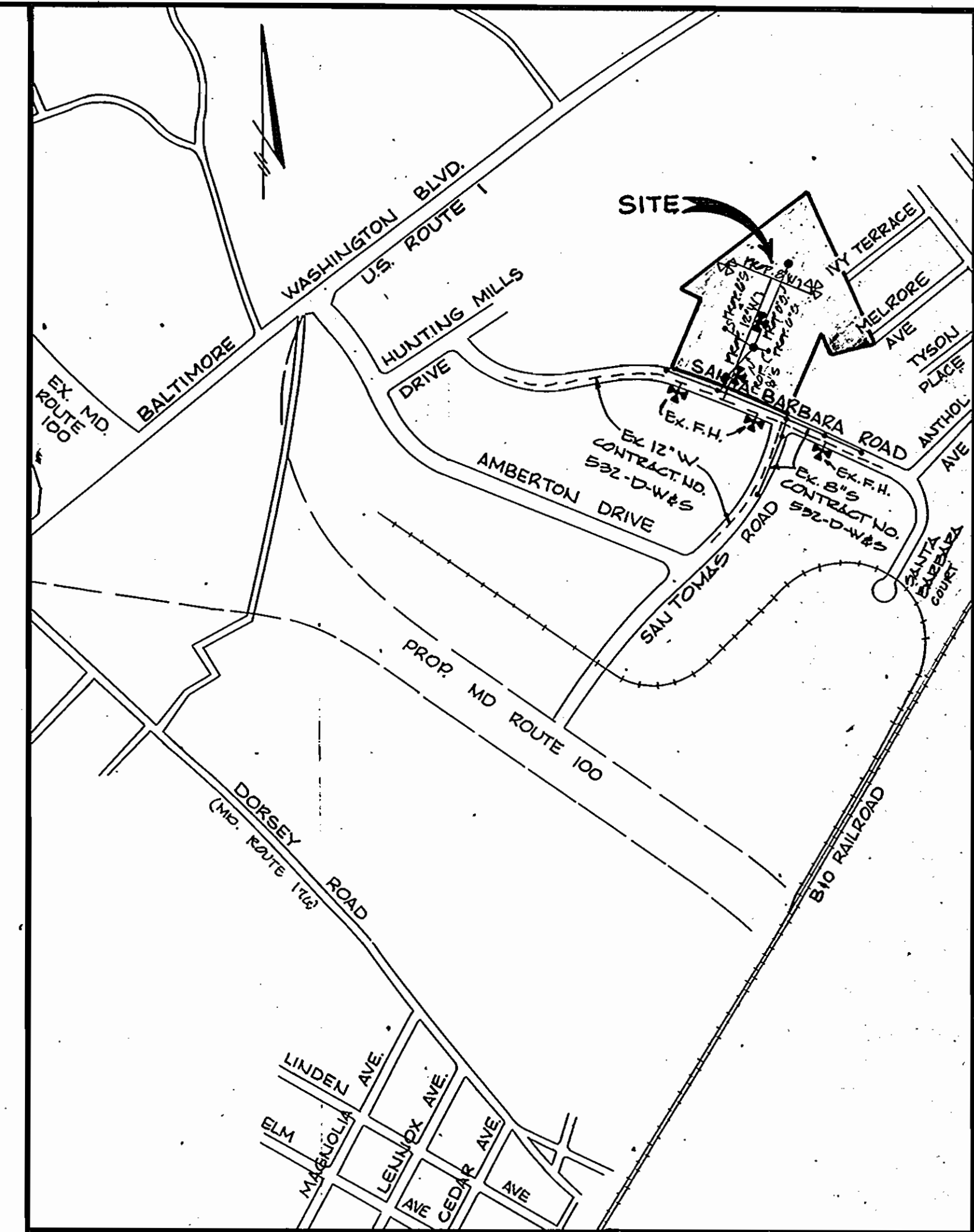
- APPROXIMATE LOCATION OF EXISTING MAINS ARE SHOWN. THE CONTRACTOR SHALL TAKE ALL NECESSARY PRECAUTIONS TO PROTECT EXISTING MAINS AND SERVICE AND MAINTAIN UNINTERRUPTED SUPPLY. ANY DAMAGE INCURRED SHALL BE REPAIRED IMMEDIATELY TO THE SATISFACTION OF THE ENGINEER AT THE CONTRACTOR'S EXPENSE.
- ALL HORIZONTAL CONTROLS ARE BASED ON MARYLAND STATE COORDINATES.
- ALL VERTICAL CONTROLS ARE BASED ON U.S.G.S. DATA.
- ALL PIPE ELEVATIONS ARE INVERT ELEVATIONS.
- CLEAR ALL UTILITIES BY A MINIMUM OF 6", CLEAR ALL POLES BY 2'-0" MINIMUM OR TUNNEL AS REQUIRED. THE OWNER HAS CONTACTED THE UTILITY COMPANIES AND HAS MADE ARRANGEMENTS FOR BRACING OF POLES AS SHOWN ON THE DRAWINGS. IN THE EVENT THE CONTRACTOR'S WORK REQUIRES THE BRACING OF ADDITIONAL POLES, ANY COST INCURRED BY THE OWNER FOR THE BRACING OF ADDITIONAL POLES, OR DAMAGE SHALL BE DEDUCTED FROM THE MONEY OWED TO THE CONTRACTOR. THE CONTRACTOR SHALL COORDINATE WITH THE UTILITY COMPANIES TO SCHEDULE THE BRACING OF POLES.
- FOR DETAILS NOT SHOWN ON THE DRAWINGS, AND FOR MATERIALS AND CONSTRUCTION METHODS, USE HOWARD COUNTY DESIGN MANUAL, VOL. IV, STANDARD SPECIFICATIONS AND DETAILS FOR CONSTRUCTION. THE CONTRACTOR SHALL HAVE A COPY OF VOL. IV ON THE JOB.
- WHERE TEST PITS HAVE BEEN MADE ON EXISTING UTILITIES THEY ARE NOTED BY THE SYMBOL AT THE LOCATION OF THE TEST PIT. A NOTE OR NOTES CONTAINING RESULTS OF THE TEST PITS IS INCLUDED ON THE DRAWINGS. EXISTING UTILITIES IN THE VICINITY OF THE PROPOSED WORK FOR WHICH TEST PITS HAVE NOT BEEN DUG SHALL BE LOCATED BY THE CONTRACTOR TWO WEEKS IN ADVANCE OF CONSTRUCTION OPERATIONS AT HIS OWN EXPENSE.
- CONTRACTOR SHALL NOTIFY THE FOLLOWING UTILITIES OR AGENCIES AT LEAST FIVE WORKING DAYS BEFORE STARTING WORK SHOWN ON THESE PLANS: STATE HIGHWAY ADMINISTRATION 531-5533, BALTO. GAS & ELECTRIC COMPANY - CONTRACTOR SERVICES 850-4620, BALTO. GAS & ELECTRIC COMPANY - UNDERGROUND DAMAGE CONTROL 859-9004, BALTO. GAS & ELECTRIC COMPANY - TROUBLE SHOOTING 296-9001, MISS UTILITY 1-(301) 559-0100, COLONIAL PIPELINE 795-1390 BUREAU OF UTILITIES, HOWARD COUNTY DEPT. OF PUBLIC WORKS 992-2366, C & P TELEPHONE 1-(800) 257-7777.
- TREES AND SHRUBS ARE TO BE PROTECTED FROM DAMAGE TO MAXIMUM EXTENT. TREES AND SHRUBS LOCATED WITHIN THE CONSTRUCTION STRIP ARE NOT TO BE DAMAGED OR REMOVED BY THE CONTRACTOR.
- CONTRACTOR SHALL REMOVE TREES, STUMPS, AND ROOTS ALONG THE LINE OF EXCAVATION. PAYMENT FOR SUCH REMOVAL SHALL BE INCLUDED IN THE UNIT PRICE BID FOR CONSTRUCTION OR THE MAIN.
- PLACE REGULATION "MEN WORKING" WARNING SIGNS AS REQUIRED TO COMPLY WITH MARYLAND STATE HIGHWAY ADMINISTRATIONS MANUAL FOR HIGHWAY CONSTRUCTION AND MAINTENANCE OPERATIONS.

PART 2

- ALL WATER MAINS TO BE D.I.P. UNLESS OTHERWISE NOTED.
- TOPS OF ALL WATER MAINS TO HAVE A MINIMUM OF 3.5 COVER UNLESS OTHERWISE NOTED.
- VALVES ADJACENT TO TEES SHALL BE STRAPPED TO TEES.
- ALL FITTINGS SHALL BE BUTTRESSED OR ANCHORED WITH CONCRETE IN ACCORDANCE WITH THE STANDARD DETAILS UNLESS OTHERWISE PROVIDED ON THE DRAWINGS.
- FIRE HYDRANTS SHALL BE SET TO THE BURY LINE ELEVATION SHOWN ON THE DRAWINGS. ALL FIRE HYDRANTS SHALL BE STRAPPED AND BUTTRESSED WITH CONCRETE IN ACCORDANCE WITH THE STANDARD DETAILS. SOIL AROUND THE FIRE HYDRANT SHALL BE COMPACTED IN ACCORDANCE WITH SECTION 1003 AND 1008 OF THE STANDARD SPECIFICATIONS.
- THE CONTRACTOR SHALL NOT OPERATE ANY WATER MAIN VALVES ON THE EXISTING WATER SYSTEM.
- ALL WATER HOUSE CONNECTIONS SHALL BE INSIDE METER SETTINGS UNLESS OTHERWISE NOTED.
- ALL FIRE HYDRANTS TO BE SET THREE FEET BEHIND FACE OF CURB UNLESS NOTED OTHERWISE.
- ALL WATER HOUSE CONNECTIONS SHALL COMPLY WITH HOWARD CO. STD. 3.21 AS SHOWN ON ART. 40, SPECIAL PROVISIONS.
- MINIMUM CRIMP RADIUS WILL BE SPECIFIED BY PIPE MANUFACTURER.
- WATER MAINS AND WATER HOUSE CONNECTION LINES MUST BE PLACED SO AS TO HAVE AT LEAST ONE FOOT SEPARATION FROM THE SEWER MAIN OR SEWER HOUSE CONNECTION AS THEY PASS ABOUT IT.
- SERVICE CLAMPS ARE TO HAVE STAINLESS STRAPS.
- ALL D.I.P. FITTINGS SHALL BE ACCORDANCE WITH AWWA SPECIFICATION C-153 DUCTILE IRON COMPACT FITTINGS, 3-INCH THROUGH 12-INCH FOR WATER AND OTHER LIQUIDS.

PART 3

- ALL SEWER MAINS SHALL BE C.S.P.X., R.C.S.P., V.C.P.X., A.C.P. CLASS 2400 OR P.V.C. UNLESS OTHERWISE NOTED.
- THE CONTRACTOR SHALL PROVIDE A JOINT IN ALL SEWER MAINS WITHIN 2'-0" OF EXTERIOR MANHOLE WALL.
- ALL MANHOLES SHALL BE 4'-0" INSIDE DIAMETER UNLESS OTHERWISE NOTED.
- MANHOLES SHOWN WITH 12" WALLS ARE BRICK MANHOLES ONLY.
- MANHOLES DESIGNATED WITHIN THE PLAN AND PROFILE SHALL HAVE WATERTIGHT FRAME AND COVERS, STANDARD DETAIL G5.52. WHERE WATERTIGHT MANHOLE FRAME AND COVER IS USED, SET TOP OF FRAME 1'-6" ABOVE FINISHED GRADE UNLESS NOTED ON DRAWINGS.
- MANHOLES LOCATED WITHIN PROPOSED ROADWAY SHALL HAVE STANDARD HEAVY TRAFFIC MANHOLE FRAME AND COVER, STANDARD DETAIL G5.51.
- THE CONTRACTOR SHALL ARRANGE TO HAVE THE EXISTING UNDERGROUND CABLE FIELD-LOCATED PRIOR TO ANY EXCAVATION FOR THE SEWER MAIN.



LOCATION MAP
SCALE: 1"=600'

TYPE OF BUILDING: OFFICE/WAREHOUSE

NUMBER OF LOTS: 1
NUMBER OF WATER HG.: 2
NUMBER OF SEWER H.C.: 3
DRAINAGE AREA-DEEP RUN
WATER CODE: A24
SEWER CODE: 2101000

BENCH MARK
VERTICAL CONTROL: USC & GS BM 121 ELEV. 102.426 AND SHA. B.M. 6-A ELEV. 198.65.
INTERSECTION OF DORSEY RD. AND B&O RAILROAD.

QUANTITIES			
ITEMS	ESTIMATED	AS BUILT	MATERIAL/SUPPLIER
12"x12" TAPPING ELBOW	1	1	A.P. Supplies
12" VALVE	1	1	United Foundry Transit Valley
8" VALVE	5	5	Macler - A.P. Supplies
6" VALVE	4	4	" " " "
12"x8" TEE	1	1	A.P. Supplies
12"x6" TEE	2	2	United Foundry Transit Valley
8"x8" TEE	3	3	" " " "
8"x6" TEE	3	3	" " " "
6" FIRE HYDRANT	4	4	Macler - A.P. Supplies
12" D.I.P.	688 L.F.	688 L.F.	ATLANTIC STATES - A.P.
8" D.I.P.	500 L.F.	500 L.F.	" " " "
6" D.I.P.	73 L.F.	73 L.F.	" " " "
8" CUP	2	2	A.P. Supplies
8" SANITARY	10 L.F.	10 L.F.	United Foundry Transit Valley

REVIEWED FOR HOWARD SOIL CONSERVATION DISTRICT AND MEETS TECHNICAL REQUIREMENTS
 APPROVED: *James Helms* 5/27/88
 SOIL CONSERVATION SERVICES DATE

THE DEVELOPMENT PLAN IS APPROVED FOR SOIL EROSION AND SEDIMENT CONTROL BY THE HOWARD SOIL CONSERVATION DISTRICT
 APPROVED: *Stephen L. Smith* 5/26/88
 HOWARD SOIL CONSERVATION DISTRICT DATE

EROSION CONTROL MEASURES FOR THIS CONTRACT WILL BE IMPLEMENTED IN ACCORDANCE WITH SECTION 219 OF THE STANDARD SPECIFICATIONS AND CFP 88-141

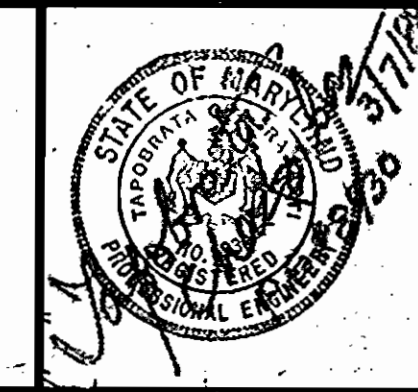
DEPARTMENT OF PUBLIC WORKS
 HOWARD COUNTY, MARYLAND

James Helms 5/27/88
 DIRECTOR OF PUBLIC WORKS DATE

Robert B. Barnes 5/27/88
 CHIEF, BUREAU OF UTILITIES DATE

Paul L. Jones 5/27/88
 CHIEF, LAND DEVELOPMENT DIVISION DATE

ENGINEER
GEORGE WM. STEPHENS JR.
 AND ASSOCIATES, INC.
 303 ALLEGHENY AVENUE TOWSON, MD. 21204
 (301) 825-8120



DESIGNED: CML
 DRAWN: KEM
 CHECKED: TC

BY	NO	REVISION	DATE
GW.S.	1	ADDED F.H. @ STA. 4+82 PROFILE #1	8/24/88

TITLE SHEET
 GENERAL NOTES FOR
 WATER AND SEWER

CONTRACT NO. 14-1807-D

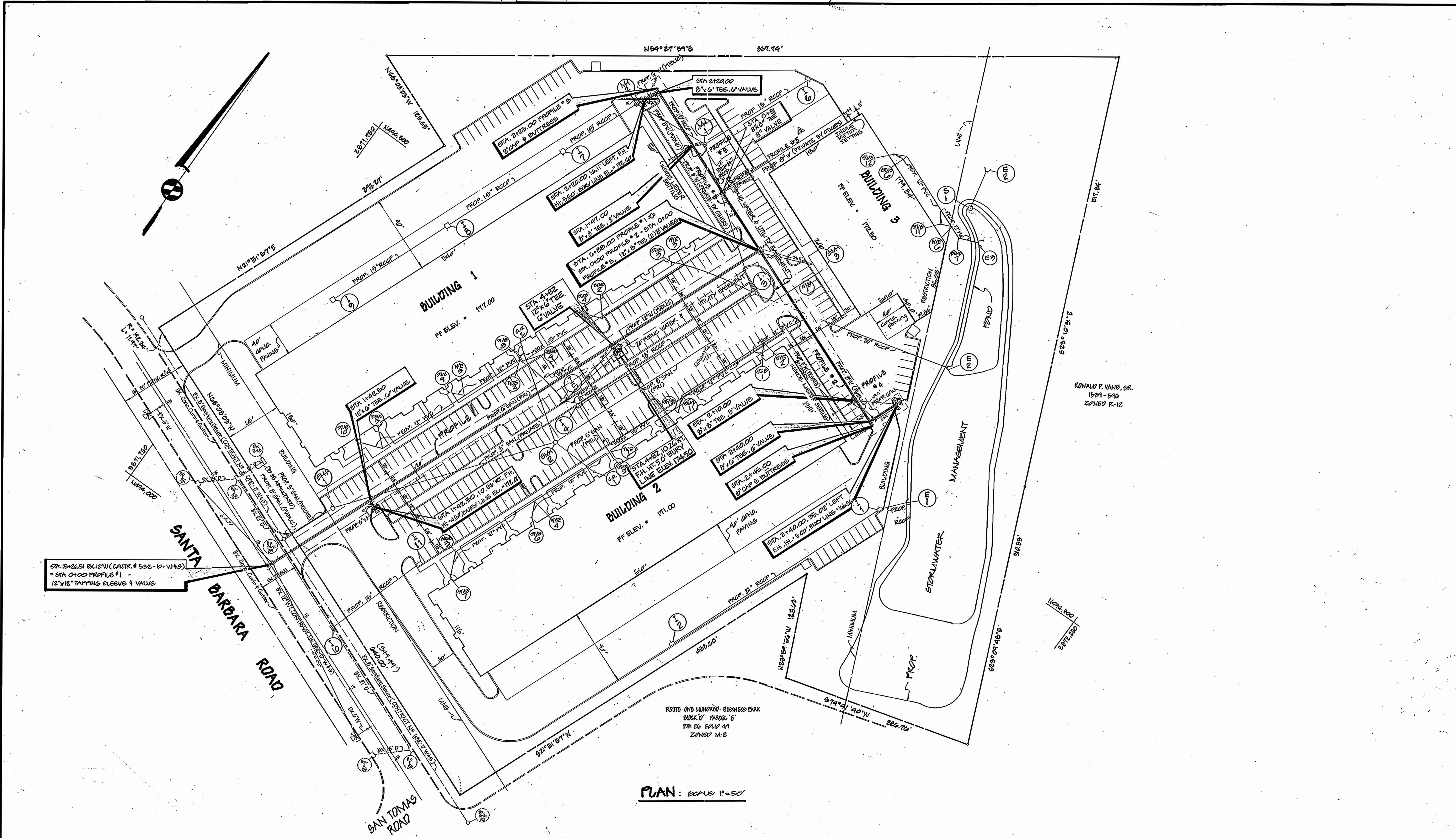
600 SCALE MAP NO. 37 838 BLOCK NO. 198 24

ROUTE ONE HUNDRED BUSINESS PARK
 BLOCK 'D' PARCEL 'D-1'
 HOWARD COUNTY
 MARYLAND

MARCH 4, 1988

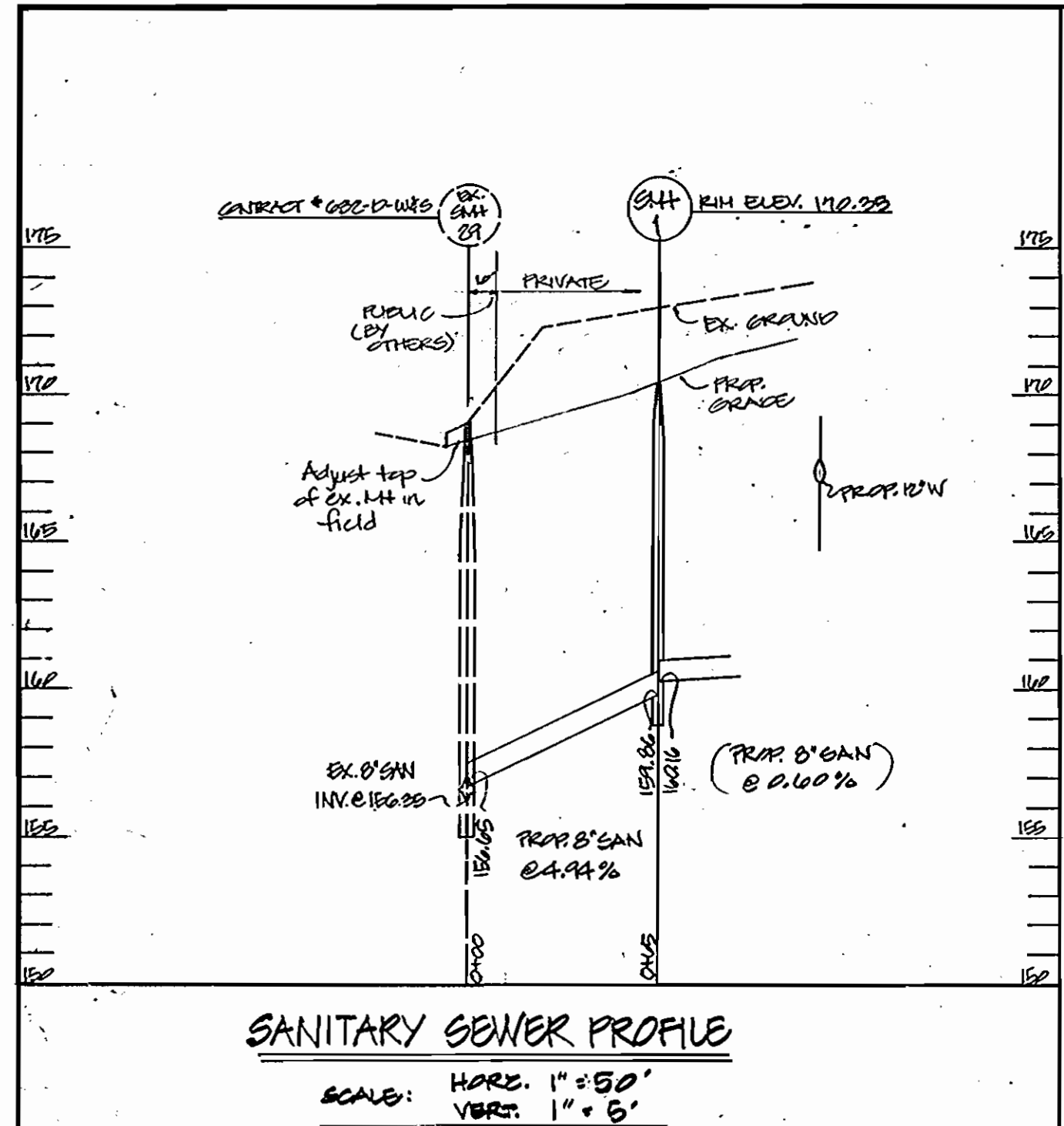
SCALE: AS SHOWN

SHEET NO. 1 OF 3



PLAN: SCALE 1"=50'

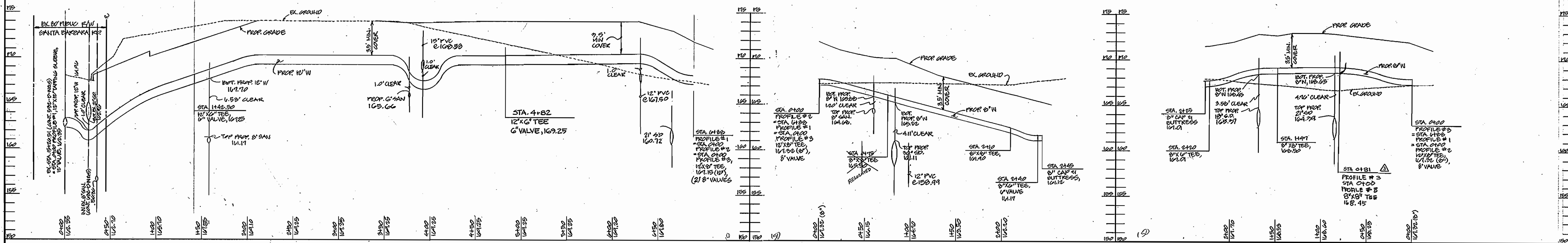
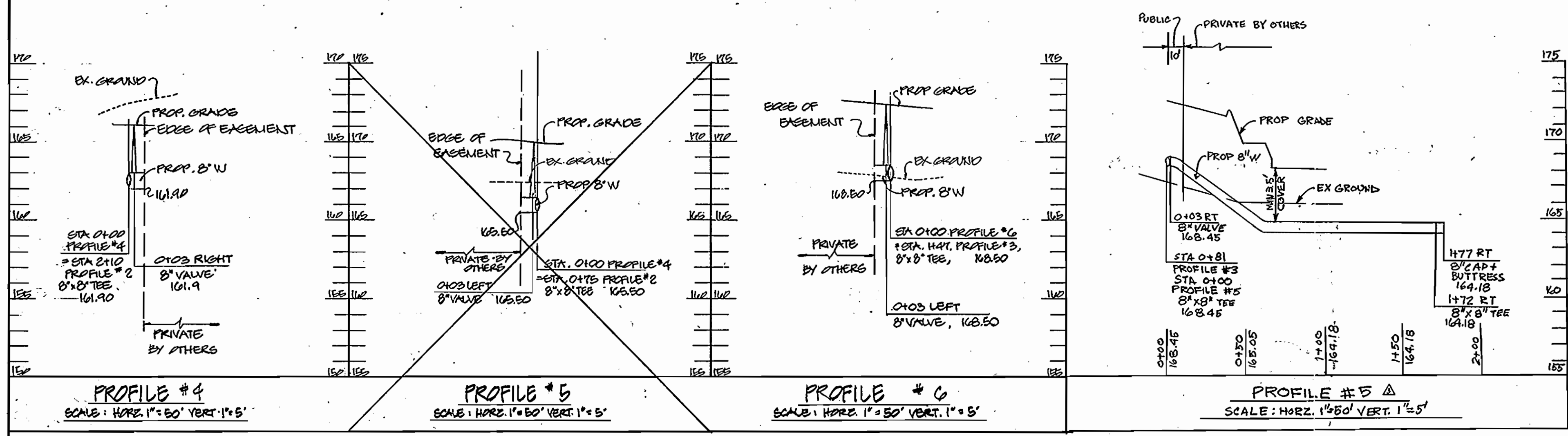
REVIEWED FOR HOWARD ECU CONSERVATION DISTRICT AND MEETS TECHNICAL REQUIREMENTS U.S. ECU CONSERVATION SERVICE DATE		THIS DEVELOPMENT PLAN IS APPROVED FOR SOIL EROSION & SEDIMENT CONTROL BY THE HOWARD ECU CONSERVATION DISTRICT. HOWARD ECU CONSERVATION DISTRICT DATE		SEDIMENT CONTROL MEASURES FOR THIS CONTRACT WILL BE IMPLEMENTED IN ACCORDANCE WITH SECTION 214 OF THE STANDARD SPECIFICATIONS AND ECP - 88-141 DATE		DESIGNED: CHL DRAWN: RBM CHECKED: TC		<table border="1"> <thead> <tr> <th>BY</th> <th>NO.</th> <th>REVISION</th> <th>DATE</th> </tr> </thead> <tbody> <tr> <td>GWS</td> <td>1</td> <td>ADDED F.H. @ STA. 4+82 PROFILE #1</td> <td>8/26/88</td> </tr> <tr> <td>GWS</td> <td>2</td> <td>STORM DRAINS CHANGED BLDG. A & B ROOF DRAINS TO TR.</td> <td>10/24/88</td> </tr> <tr> <td>GWS</td> <td>3</td> <td>RELOC. WATER CONN. BLDG. C</td> <td>7/1/89</td> </tr> </tbody> </table>		BY	NO.	REVISION	DATE	GWS	1	ADDED F.H. @ STA. 4+82 PROFILE #1	8/26/88	GWS	2	STORM DRAINS CHANGED BLDG. A & B ROOF DRAINS TO TR.	10/24/88	GWS	3	RELOC. WATER CONN. BLDG. C	7/1/89	PLAN FOR PROPOSED WATER MAIN CONTRACT NO. 14-1807-D 600' SCALE MAP NBS 37138 BLOCK NO. 19124		PROPOSED OFFICE/WAREHOUSE ROUTE ONE HUNDRED BUSINESS PARK BLOCK D PARCEL D-1 HOWARD COUNTY, MARYLAND ELECTION DISTRICT NO. 1 MARCH 4, 1988		SCALE: AS SHOWN SHEET 2 OF 3
BY	NO.	REVISION	DATE																											
GWS	1	ADDED F.H. @ STA. 4+82 PROFILE #1	8/26/88																											
GWS	2	STORM DRAINS CHANGED BLDG. A & B ROOF DRAINS TO TR.	10/24/88																											
GWS	3	RELOC. WATER CONN. BLDG. C	7/1/89																											
DEPARTMENT OF PUBLIC WORKS HOWARD COUNTY, MARYLAND James H. Lewis, Director of Public Works Date: 5/23/88 Robert B. Reinger, Chief, Bureau of Utilities Date: 5/27/88 Kathleen S. Reilly, Chief, Bureau of Engineering Date: 5/27/88			ENGINEER GEORGE Wm. STEPHENS, JR. AND ASSOCIATES, INC. 303 ALLEGHENY AVE. TOWSON, MD. 21204 (301) 825-8120					ROUTE ONE HUNDRED BUSINESS PARK BLOCK D PARCEL D-1 P.P. 26 PAR 41 ZONED M-2			RONALD P. VANG, SR. 189A-590 ZONED R-12																			



REVIEWED FOR HOWARD EARL CASERATION DISTRICT AND WETTS TECHNICAL REQUIREMENTS
U.S. EARL CASERATION SERVICE DATE

THE ELEVATION PLAN IS APPROVED FOR EARL CASERATION AND SEWERAGE CONTROL BY THE HOWARD EARL CASERATION DISTRICT.
APPROVED: HOWARD EARL CASERATION DISTRICT DATE

SEWERAGE CONTROL MEASURED FOR THIS CONTRACT WILL BE IMPLEMENTED IN ACCORDANCE WITH SECTIONS 214 OF THE STANDARD SPECIFICATIONS AND SDP 88-141.



DEPARTMENT OF PUBLIC WORKS
HOWARD COUNTY, MD.
5-23-94
DATE
6/27/88
DATE

ENGINEER
GEORGE WILLIAM STEPHENS, JR.
AND ASSOCIATES, INC.
308 ALLEGHENY AVENUE
TOWSON, MARYLAND 21284
(301) 925-0120



DESIGNED: CHW
DRAWN: PFM/CHW
CHECKED: TC

NO.	REVISION	DATE
1	ADDED FH @ STA. 4+82 PROFILE #1	8/22/88
2	CHANGED PROFILE TO REFLECT NEW UTILITY CROSSINGS	11/22/88
3	RELOCATED WATER CONN. BLDG C	7/7/89

PROFILES
-for-
PROPOSED WATER MAIN
CONTRACT NO. 14-1807-D
BLOCK NO. 17 & 24

PROPOSED APPROXIMATE
**ROUTE ONE HUNDRED BUSINESS PK.
BLOCK D PARCEL D-1**
HOWARD COUNTY, MARYLAND ELECTION DISTRICT NUMBER: 1
MARCH 4, 1988

SCALE: AS SHOWN
SHEET 1 OF 3