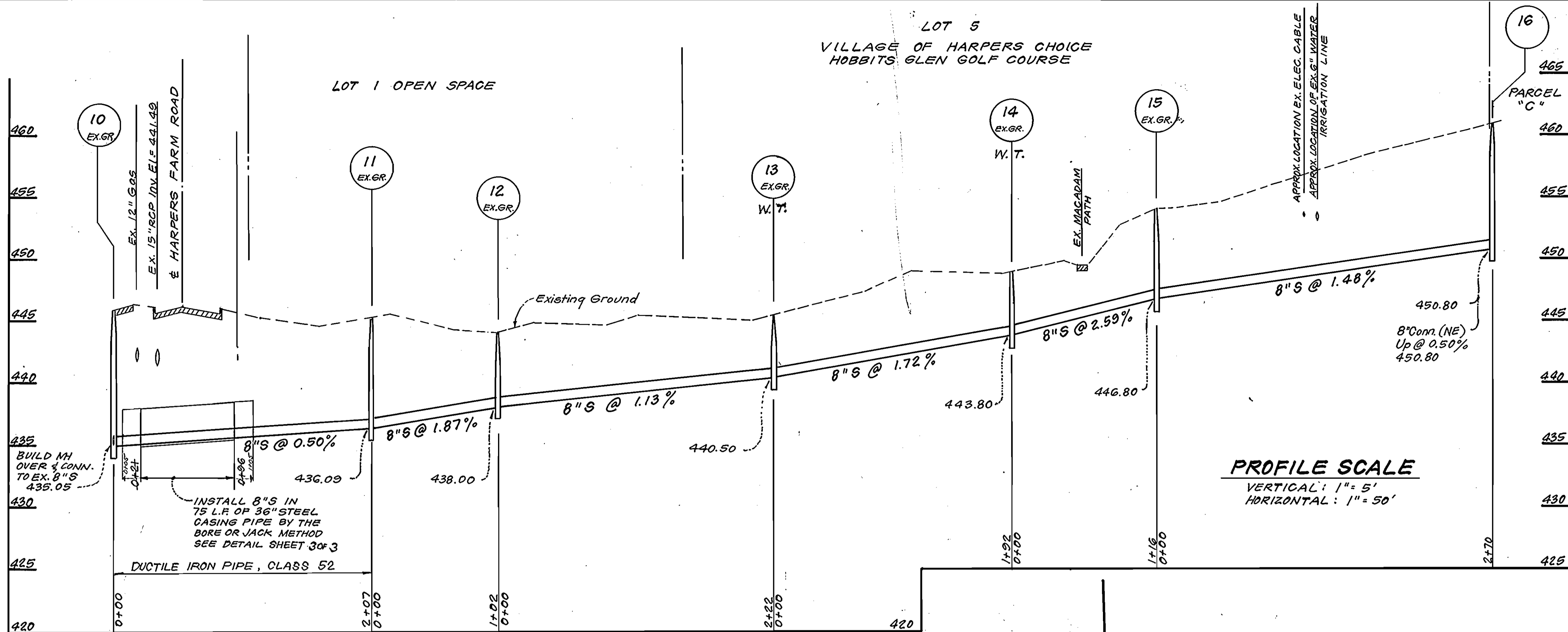
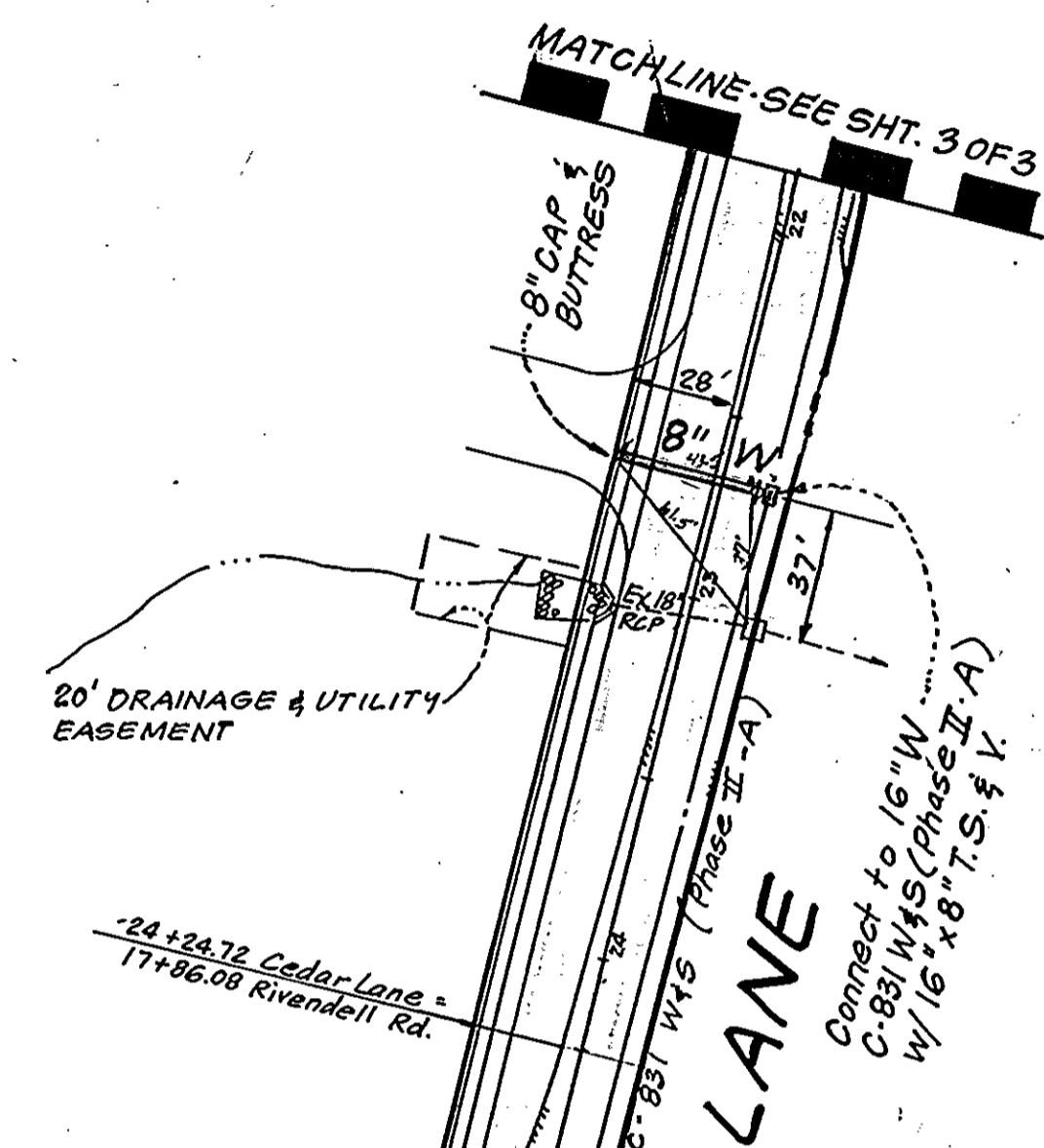


LOT 5
VILLAGE OF HARPERS CHOICE
HOBBITS GLEN GOLF COURSE



PROFILE SCALE

VERTICAL: 1" = 5'
HORIZONTAL: 1" = 50'



OPEN SPACE LOT 1

BUILD MH OVER & CONN. TO EX. 8" S
Property of HOWARD RESEARCH & DEVELOPMENT CORP.

Install 8" S in 75 L.F. of 36" Steel Casing Pipe By The Bore Or Jacking Method. See Detail This Sheet.

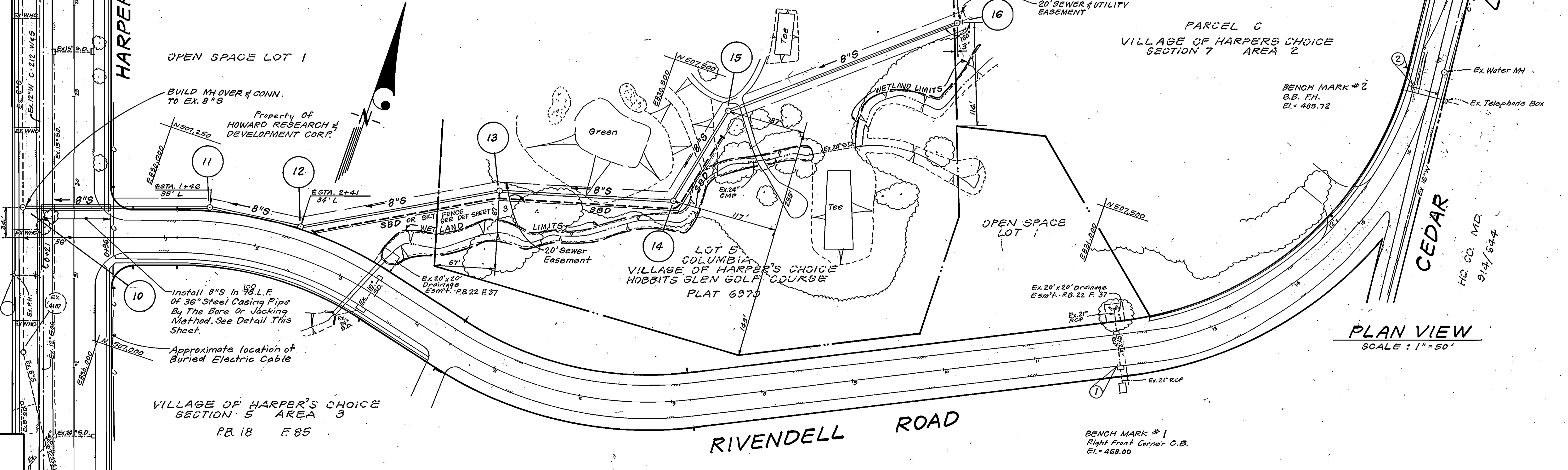
Approximate location of Buried Electric Cable

VILLAGE OF HARPER'S CHOICE
SECTION 5 AREA 3
P.B. 18 F.85

PARCEL C
VILLAGE OF HARPERS CHOICE
SECTION 7 AREA 2

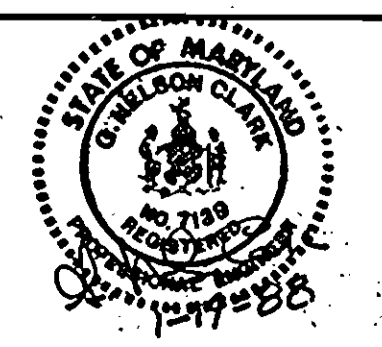
BENCH MARK #2
B.B. F.H.
E.I. = 485.72

PLAN VIEW
SCALE: 1" = 50'



DEPARTMENT OF PUBLIC WORKS
HOWARD COUNTY, MARYLAND
Director of Public Works: *Alte lca*
Chief, Bureau of Engineering: *W. L. F.*
Chief, Bureau of Utilities: *4-13-88*
Chief, Land Development Div.: *4-13-88*

CLARK · FINEPROCK & SACKETT
ENGINEERS · PLANNERS · SURVEYORS
7135 MINSTREL WAY COLUMBIA, MD. 21045
BALT. (301) 381-7500
WASH. (301) 621-8100

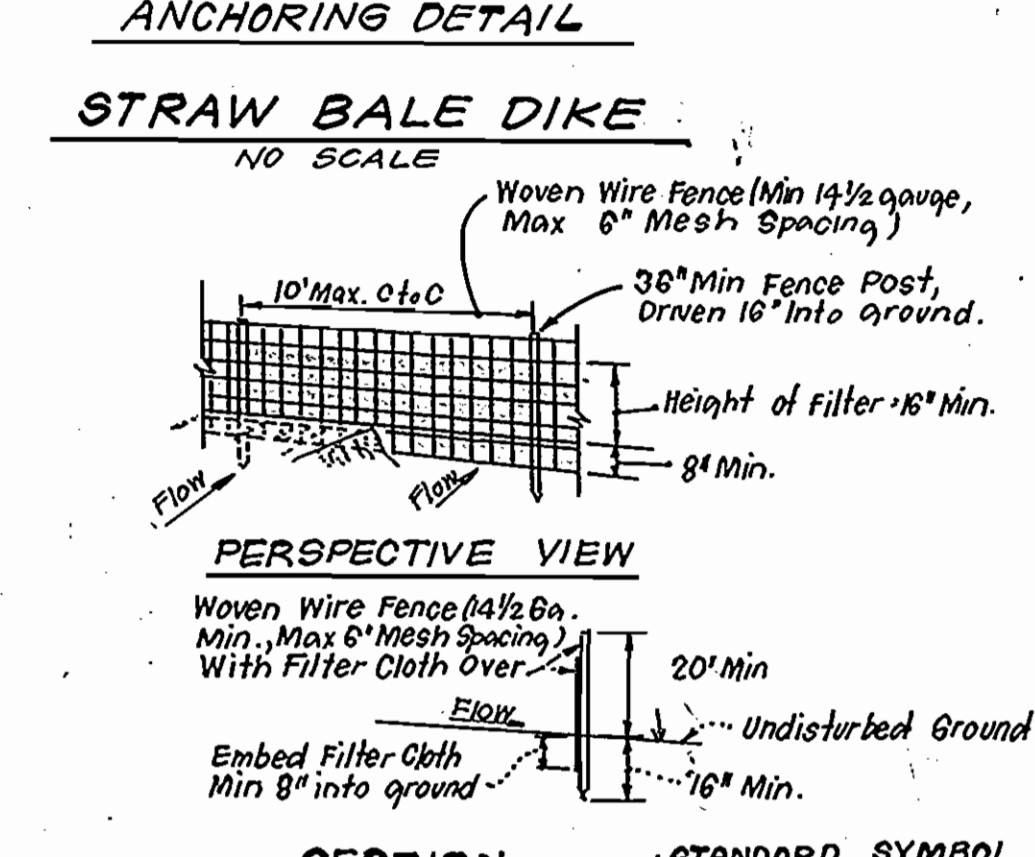
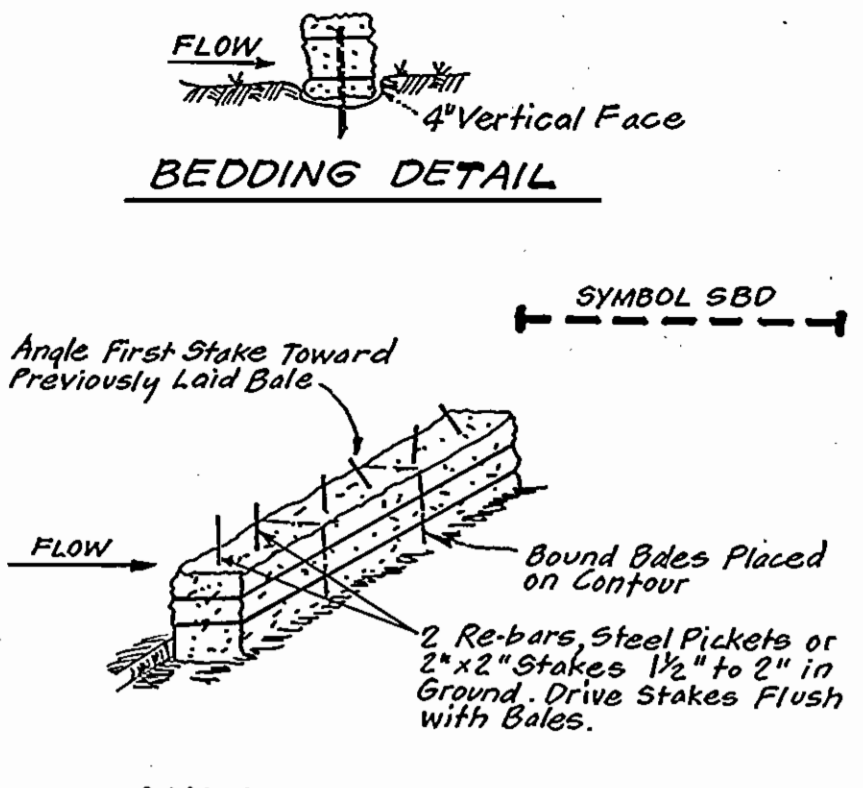
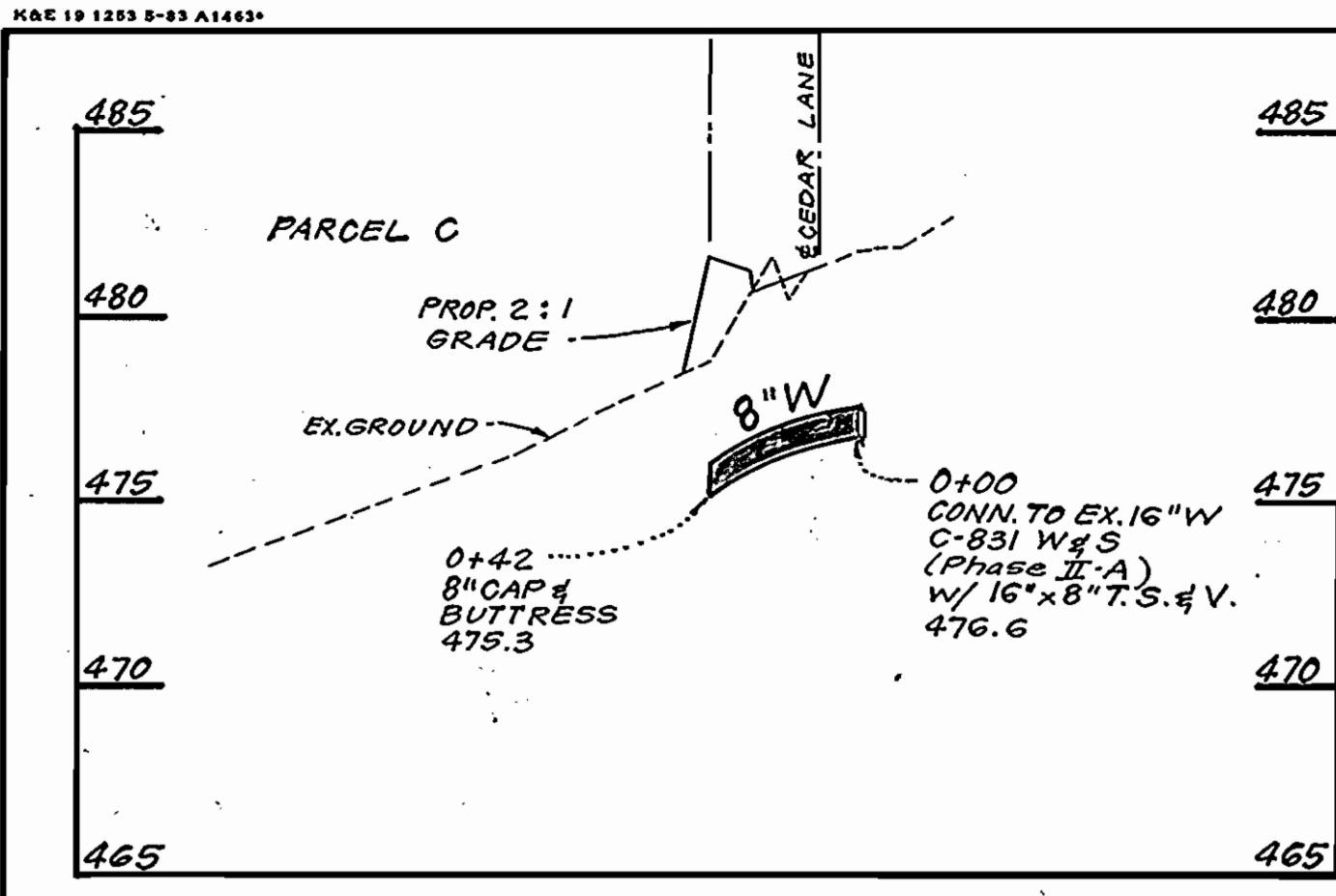


DES: J.T.R.			
DRN: K.L.M.			
CHK: J.T.R.			
DATE: 1-18-88	BY: NO.	REVISION	DATE

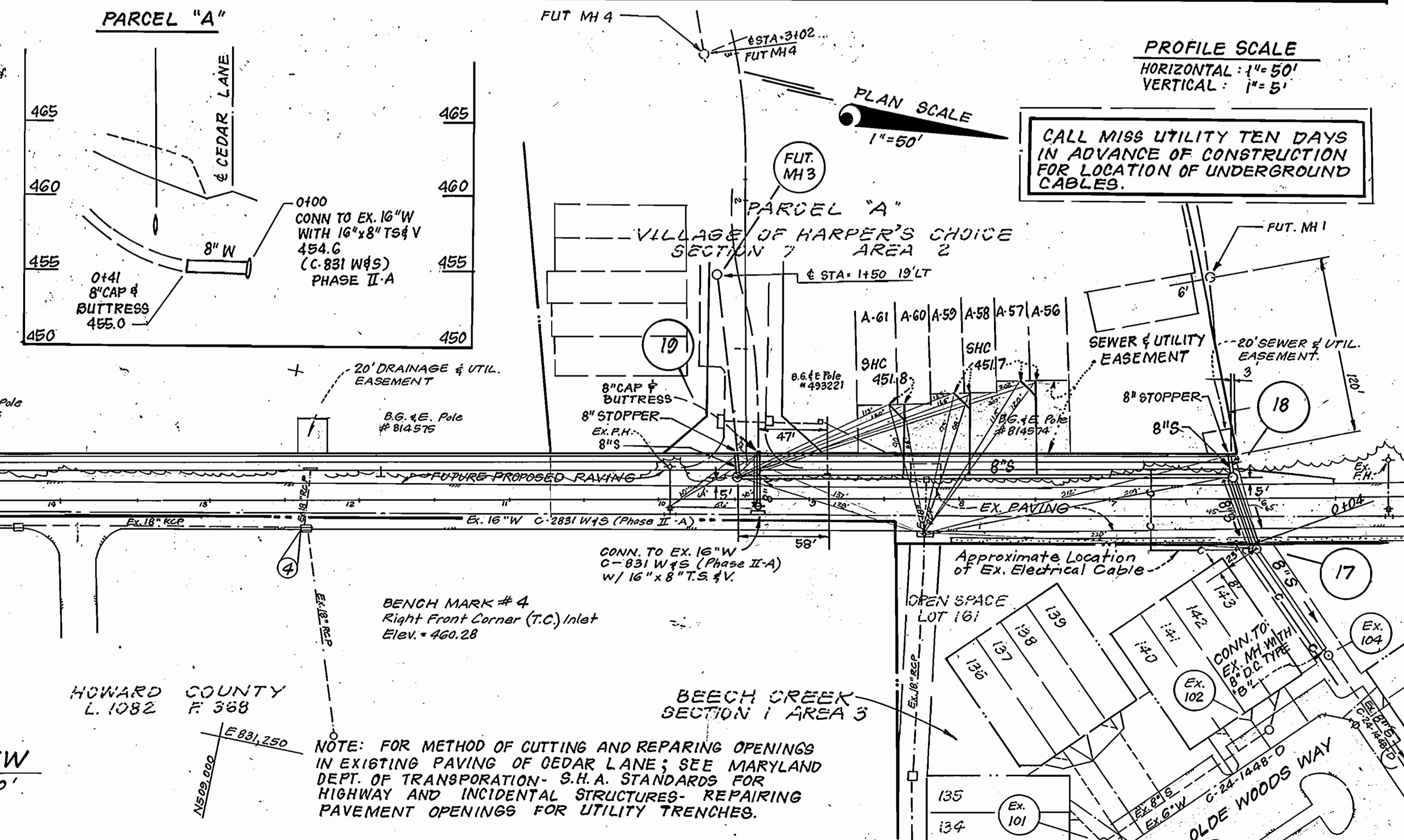
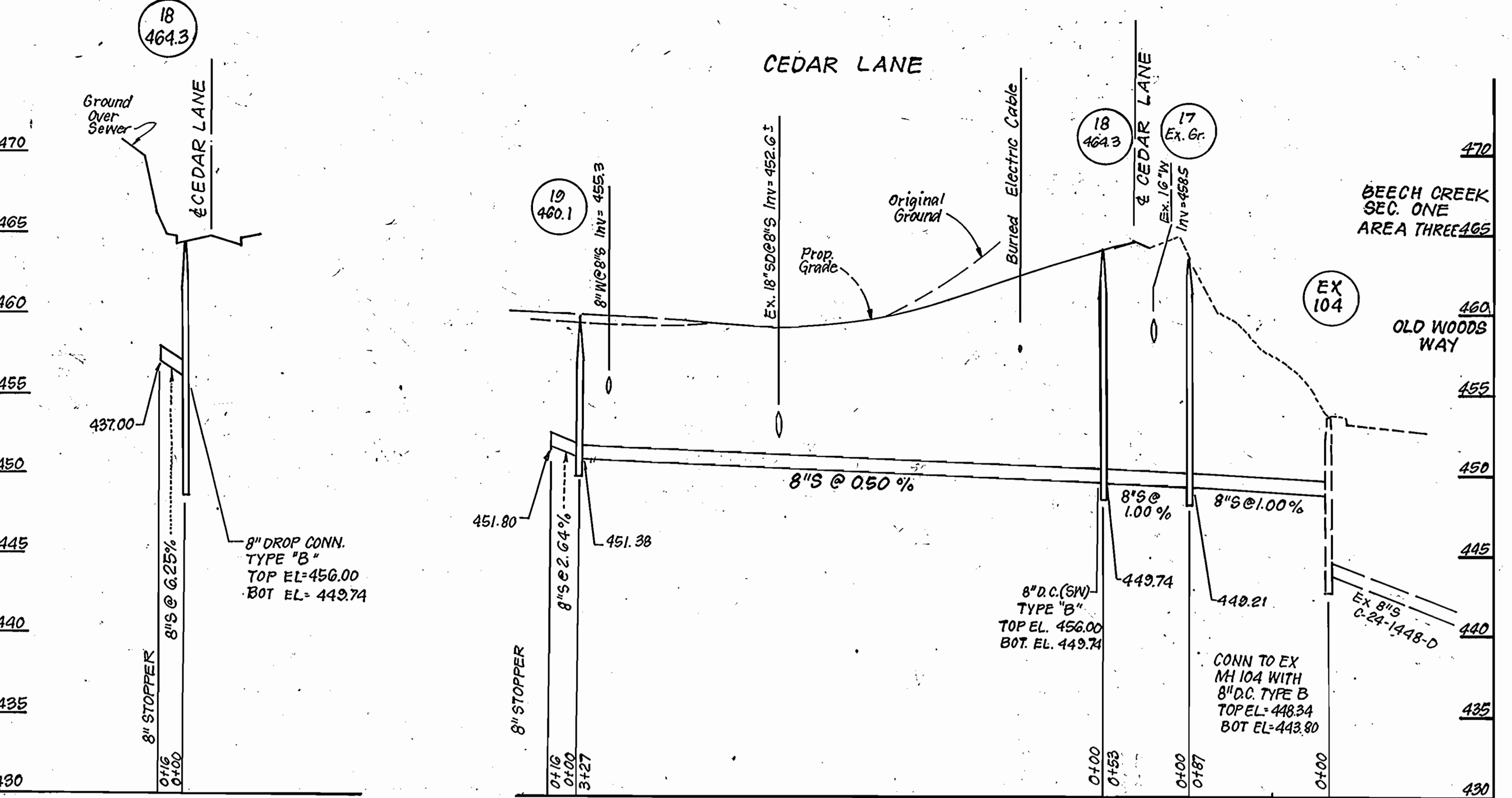
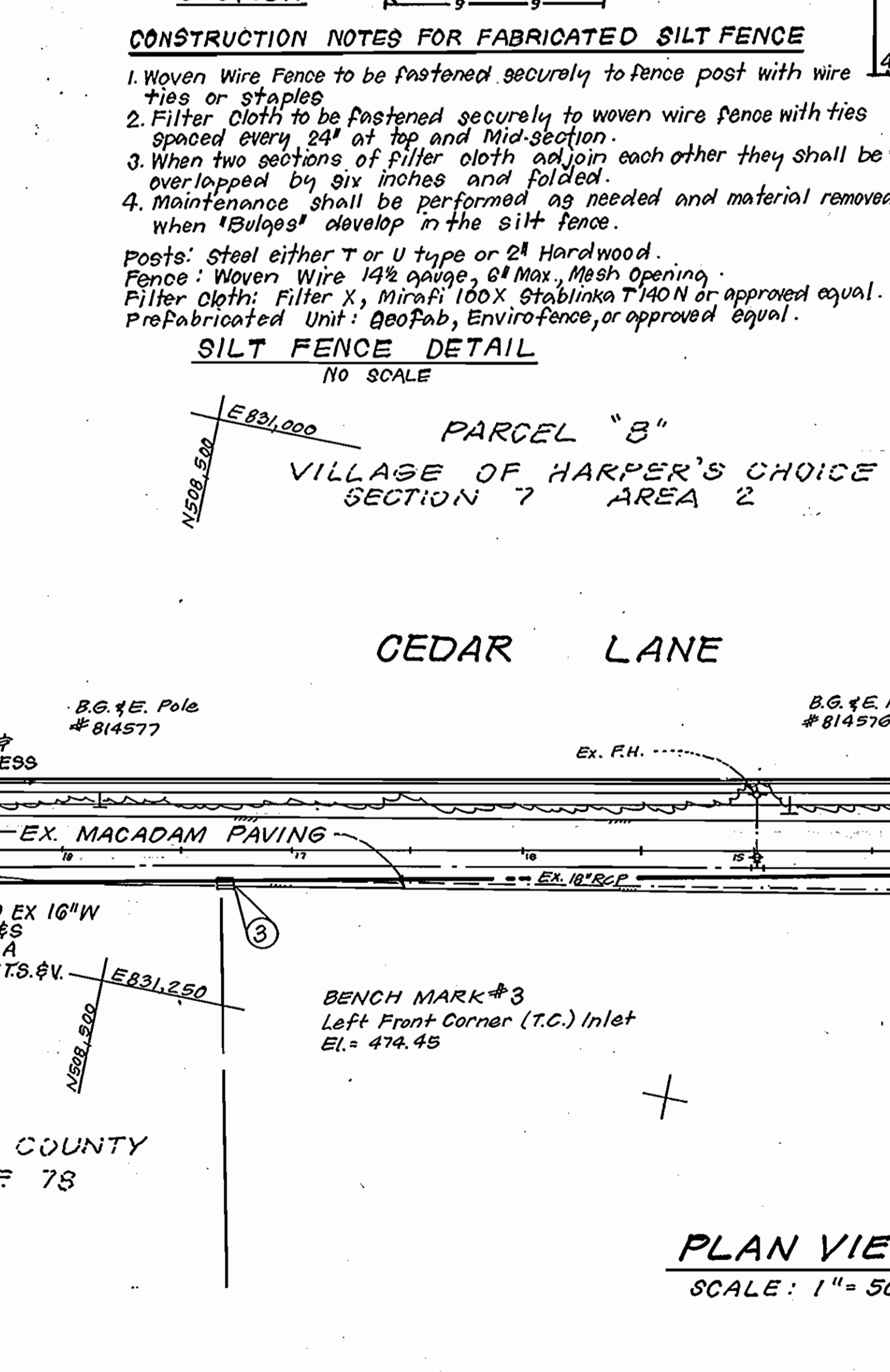
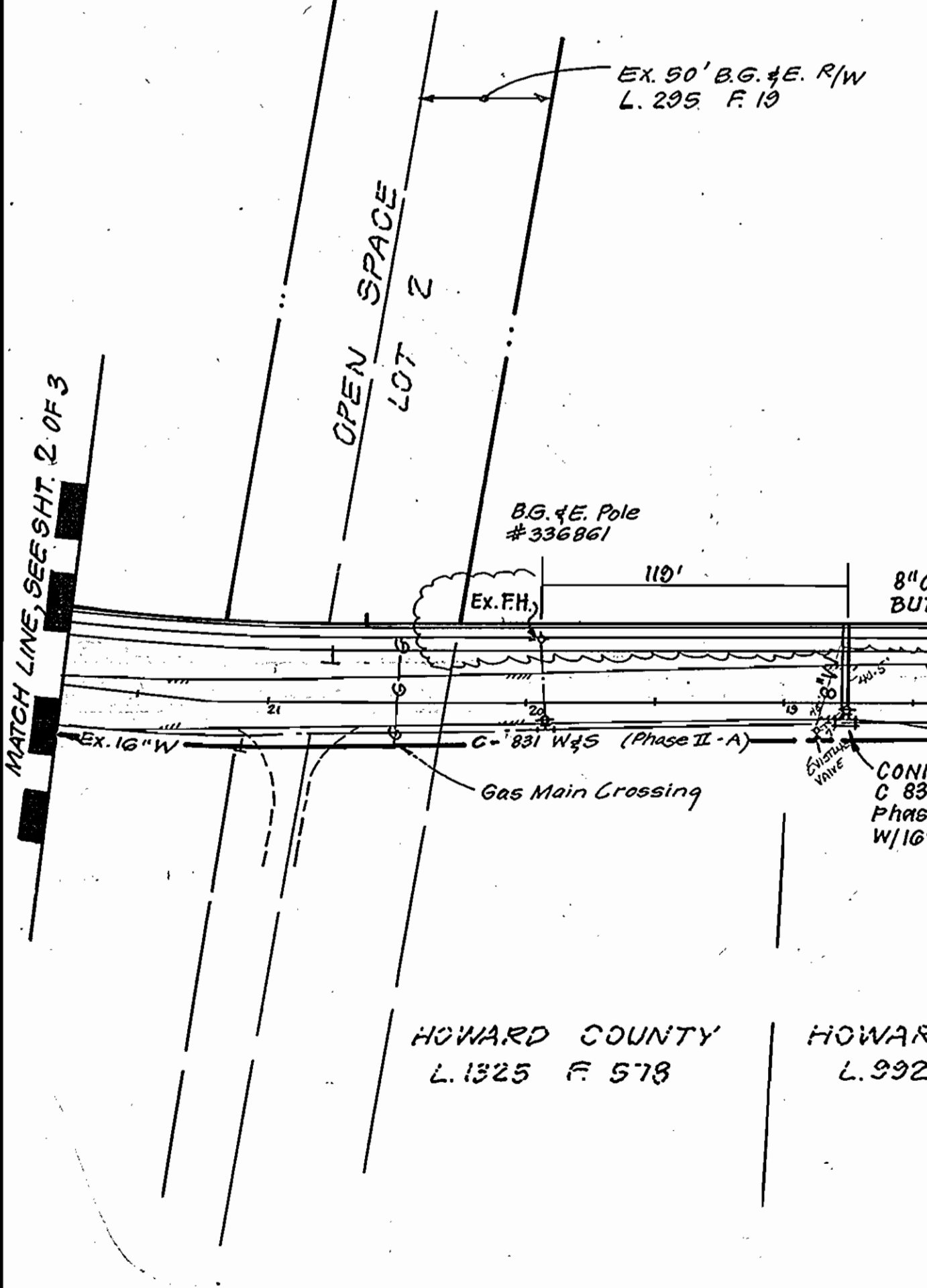
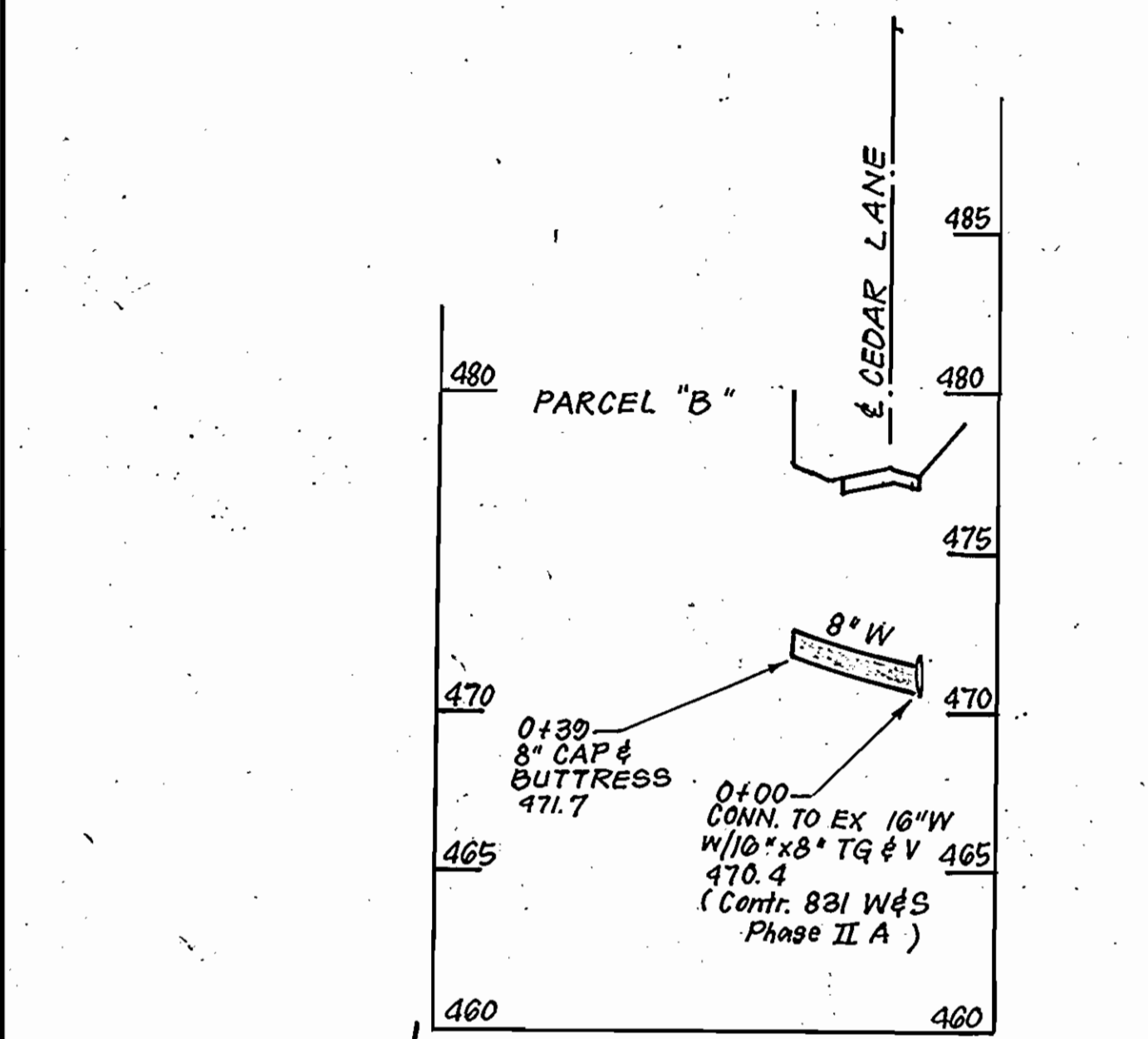
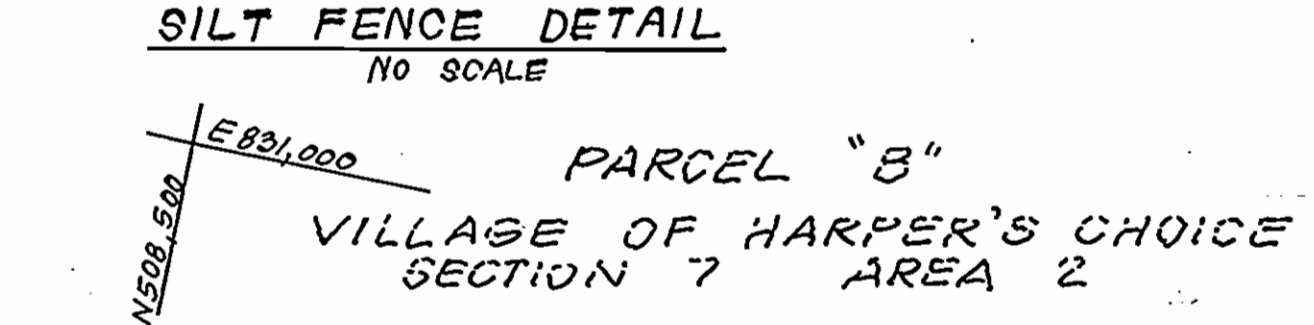
PLAN & PROFILE OF SEWER
600' SCALE MAP NO. 29 BLOCK NO.

COLUMBIA
VILLAGE OF HARPER'S CHOICE
SECTION 7 AREA 2
PARCEL C
5TH ELECTION DISTRICT
CONTRACT NO. 34-1788-D

SCALE As Shown
SHEET 2 OF 3



- CONSTRUCTION NOTES FOR FABRICATED SILT FENCE**
1. Woven Wire Fence to be fastened securely to fence post with wire ties or staples.
 2. Filter Cloth to be fastened securely to woven wire fence with ties spaced every 24" at top and mid-section.
 3. When two sections of filter cloth adjoin each other they shall be overlapped by six inches and folded.
 4. Maintenance shall be performed as needed and material removed when 'Bulges' develop in the silt fence.
- Posts: Steel either T or U type or 2" Hardwood.
 Fence: Woven Wire 1 1/2 gauge, 6" Max. Mesh Opening.
 Filter Cloth: Filter X, Mirafi 100X, Stablinka T140N or approved equal.
 Prefabricated Unit: Geofab, Envirofence, or approved equal.



DEPARTMENT OF PUBLIC WORKS
 HOWARD COUNTY, MARYLAND

Director of Public Works: *[Signature]* 4-11-88
 Chief, Bureau of Engineering: *[Signature]* 4-11-88
 Chief, Bureau of Utilities: *[Signature]* 4-13-88
 Chief, Land Development Div.: *[Signature]* 4-11-88

CLARK · FINEPROCK & SACKETT
 ENGINEERS · PLANNERS · SURVEYORS
 7135 MINSTREL WAY COLUMBIA, MD. 21045
 BALT. (301) 381-7500
 WASH. (301) 621-8100

STATE OF MARYLAND
 DEPARTMENT OF PUBLIC WORKS
 HOWARD COUNTY
 4-11-88

DES:	JTR	1	Revised Elev 8" Cap & Buttress @ Sta 0+41 (P. 2)	5/3/88
UTR:	2		Rev. loc. of 8" W. Conn to Parcel B	10/27/88
DRN:	VLM	6/9	ADDED 2" 8" 4" - RELETED STEEL GUARD ON CEDAR LA.	1-9-89
CHK:	JTR			
DATE:	1-18-88	BY	NO.	REVISION

PLAN & PROFILE OF
 WATER & SEWER

600' SCALE MAP NO. 20 BLOCK NO.

COLUMBIA
 VILLAGE OF HARPER'S CHOICE
 SECTION 7 AREA 2
 PARCELS A, B & C
 5TH ELECTION DISTRICT
 CONTRACT NO. 34-1788-D

SCALE As Shown
 SHEET 3 OF 3

AS-BUILT 3-30-89