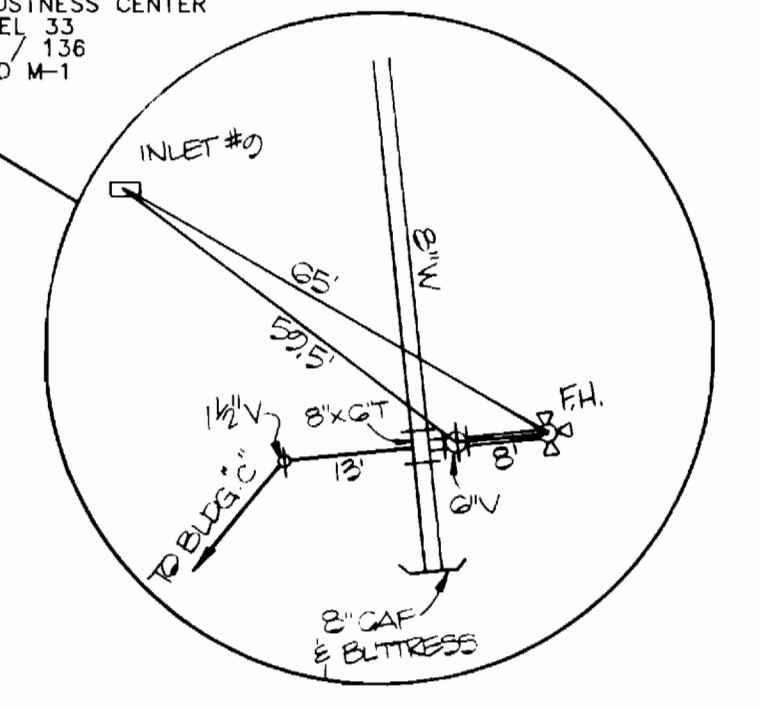
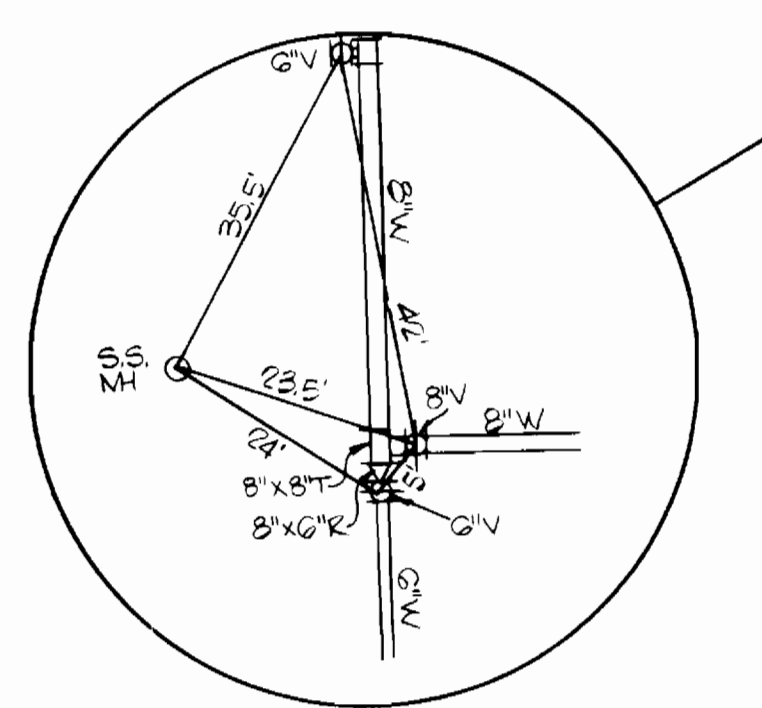


**GENERAL NOTES**

- APPROXIMATE LOCATION OF EXISTING MAINS ARE SHOWN. THE CONTRACTOR SHALL TAKE ALL NECESSARY PRECAUTIONS TO PROTECT EXISTING MAINS AND SERVICES AND MAINTAIN UNINTERRUPTED SUPPLY. ANY DAMAGE INCURRED SHALL BE REPAIRED IMMEDIATELY TO THE SATISFACTION OF THE ENGINEER AT THE CONTRACTOR'S EXPENSE.
- ALL HORIZONTAL CONTROLS ARE BASED ON MARYLAND STATE COORDINATES.
- ALL VERTICAL CONTROLS ARE BASED ON U.S.G.S. DATA.
- ALL PIPE ELEVATIONS SHOWN ARE  $\ominus$  INVERT ELEVATIONS.
- CLEAR ALL UTILITIES BY A MINIMUM OF 6'.
- FOR DETAILS NOT SHOWN ON THE DRAWINGS, AND FOR MATERIALS AND CONSTRUCTION METHODS, USE HOWARD COUNTY DESIGN MANUAL, VOLUME IV, STANDARD SPECIFICATIONS AND DETAILS FOR CONSTRUCTIONS. THE CONTRACTOR SHALL HAVE A COPY OF VOLUME IV ON THE JOB.
- WHERE TEST PITS HAVE BEEN MADE ON EXISTING UTILITIES, THEY ARE NOTED BY THE SYMBOL  $\oplus$  AT THE LOCATION OF THE TEST PIT. A NOTE OR NOTES CONTAINING THE RESULTS OF THE TEST PIT OR PITS IS INCLUDED ON THE DRAWINGS. EXISTING UTILITIES IN THE VICINITY OF THE PROPOSED WORK FOR WHICH TEST PITS HAVE NOT BEEN DUG SHALL BE VERIFIED BY THE CONTRACTOR TO HIS OWN PERSONAL SATISFACTION. ANY DAMAGE TO EXISTING FACILITIES DUE TO THE CONTRACTOR'S NEGLIGENCE SHALL BE REPAIRED AT THE CONTRACTOR'S EXPENSE.
- THE CONTRACTOR SHALL NOTIFY THE FOLLOWING UTILITIES OR AGENCIES AT LEAST FIVE WORKING DAYS BEFORE STARTING WORK SHOWN ON THESE PLANS:  
 STATE HIGHWAY ADMINISTRATION 531-5533  
 BALTIMORE GAS AND ELECTRIC CO. - CONTRACTOR SERVICES 850-4620  
 BALTIMORE GAS AND ELECTRIC CO. - UNDERGROUND DAMAGE CONTROL 859-9004  
 BALTIMORE GAS AND ELECTRIC CO. - TROUBLE SHOOTING 298-9001  
 MISS UTILITY 1-559-0100  
 COLONIAL PIPELINE CO. 795-1390  
 BUREAU OF UTILITIES, HO. CO. DEPARTMENT OF PUBLIC WORKS 992-2366  
 C & P TELEPHONE CO. 1-800-257-7777
- TREES AND SHRUBS ARE TO BE PROTECTED FROM DAMAGE TO MAXIMUM EXTENT. TREES AND SHRUBS LOCATED WITHIN THE CONSTRUCTION STRIP ARE NOT TO BE REMOVED OR DAMAGED BY THE CONTRACTOR.
- THE CONTRACTOR SHALL REMOVE TREES, STUMPS AND ROOTS ALONG LINE OF EXCAVATION. PAYMENT FOR SUCH REMOVAL SHALL BE INCLUDED IN THE UNIT PRICE BID FOR CONSTRUCTION OF THE MAIN.
- ALL WATER MAINS TO BE D.I.P. CLASS 52 UNLESS OTHERWISE NOTED.
- TOPS OF ALL WATER MAINS TO HAVE A MINIMUM OF 3-1/2' COVER UNLESS OTHERWISE NOTED.
- VALVES ADJACENT TO TEES SHALL BE STRAPPED TO TEES.
- ALL FITTINGS SHALL BE BUTTRESSED OR ANCHORED WITH CONCRETE IN ACCORDANCE WITH THE STANDARD DETAILS UNLESS OTHERWISE PROVIDED FOR ON THE DRAWINGS.
- FIRE HYDRANTS SHALL BE SET TO THE BURY LINE ELEVATION SHOWN ON THE DRAWINGS. ALL FIRE HYDRANTS SHALL BE STRAPPED AND BUTTRESSED WITH CONCRETE IN ACCORDANCE WITH THE STANDARD DETAILS. SOIL AROUND THE FIRE HYDRANT SHALL BE COMPACTED IN ACCORDANCE WITH SECTION 1003 OF THE STANDARD SPECIFICATIONS.
- THE CONTRACTOR SHALL NOT OPERATE ANY WATER MAIN VALVES ON THE EXISTING WATER SYSTEM.
- ALL WATER HOUSE CONNECTIONS SHALL BE FOR INSIDE METER SETTING, UNLESS OTHERWISE NOTED ON THE PLANS OR IN THE SPECIFICATIONS.
- SERVICE CLAMPS ARE TO HAVE STAINLESS STRAPS.



SEDIMENT CONTROL MEASURES FOR THIS CONTRACT WILL BE IMPLEMENTED IN ACCORDANCE WITH SECTION 219 OF THE SPECIFICATIONS AND AS SHOWN ON 507-10-119  
*Stephen J. Hahn 4/20/88*  
 HOWARD SOIL CONSERVATION DISTRICT

REVIEW FOR HOWARD SOIL CONSERVATION DISTRICT AND MEETS TECHNICAL REQUIREMENTS.  
*James M. Hahn 4/20/88*  
 U.S. SOIL CONSERVATION SERVICE (DATE)

THIS PLAN IS APPROVED FOR SOIL EROSION AND SEDIMENT CONTROL BY THE HOWARD SOIL CONSERVATION DISTRICT.  
*Stephen J. Hahn 4/20/88*  
 HOWARD SOIL CONSERVATION DISTRICT (DATE)

Item	Quantities		Material Supplier
	Estimated	As Built	
6" Plug & Buttress	1 ea.	1 EA.	UNION FOUNDRY
6" x 6" T	1 ea.	1 EA.	UNION FOUNDRY
8" x 6" R	2 ea.	1 EA.	UNION FOUNDRY
8" W	750 L.F.	248 L.F.	ATLANTIC STATES
8" x 6" F.H.T.	5 ea.	2 EA.	UNION FOUNDRY
8" x 6" T	4 ea.	5 EA.	UNION FOUNDRY
8" Plug & Buttress	1 ea.	1 EA.	UNION FOUNDRY
6" W	100 L.F.	113 L.F.	ATLANTIC STATES
8" V	2 ea.	2 EA.	MUELLER
8" - 1/8" Hor. Band	4 ea.	4 EA.	UNION FOUNDRY
8" V	1 ea.	1 EA.	MUELLER
8" x 8" T	1 ea.	1 EA.	UNION FOUNDRY
12" 8" x 8" T.S. & V.	2 ea.	2 EA.	AMERICAN-DARLING

1 1/2" VALVE	2 EA.	MUELLER
8" x 1 1/2" T	2 EA.	UNION FOUNDRY

DEPARTMENT OF PUBLIC WORKS  
 HOWARD COUNTY, MARYLAND

*Robert M. Bennett 5-12-88*  
 DIRECTOR OF PUBLIC WORKS (DATE)

*Robert M. Bennett 5-9-88*  
 CHIEF, BUREAU OF UTILITIES (DATE)

*Richard J. Pappas 5-11-88*  
 CHIEF, BUREAU OF ENGINEERING (DATE)

*Arthur E. Muegge #8707*  
 CHIEF, LAND DEVELOPMENT (DATE)

THE RIEMER GROUP INC.  
 3105 NORTH RIDGE ROAD  
 ELLICOTT CITY, MARYLAND  
 (301) 461-2690

DES: J.L.B.	J.L.B.	DATE: 1-2-88
DRN: P.B.S.	M.A.D.	BY: NO.
CHK: J.D.P.		REVISION
DATE: 1-2-88		DATE

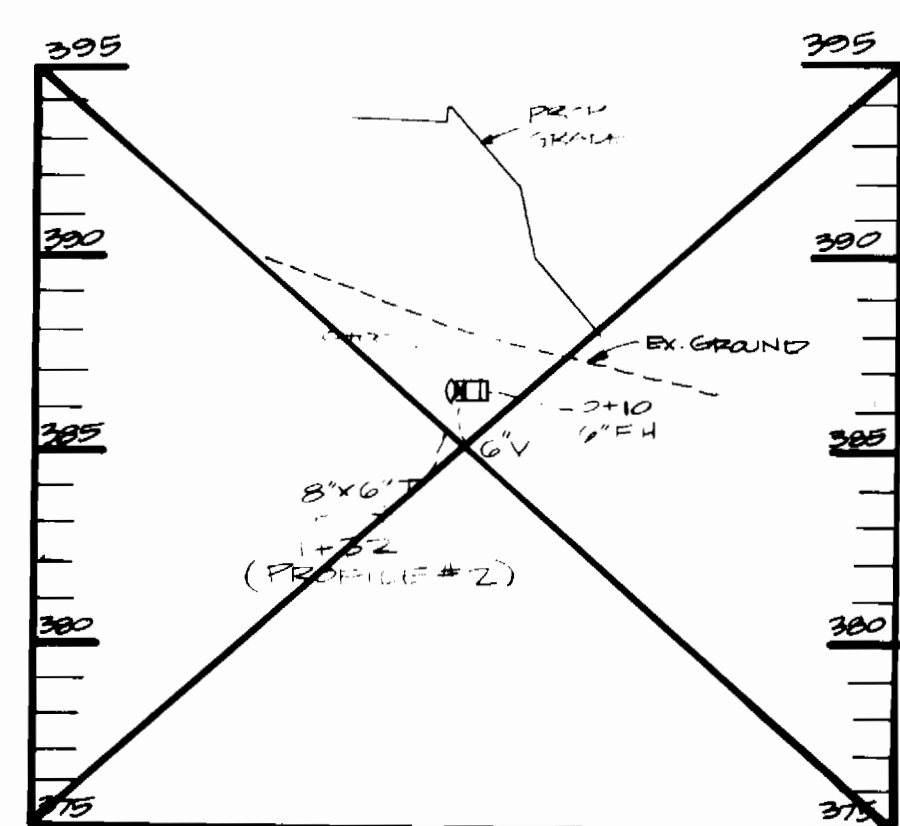
PLAN OF A WATER MAIN AND A SEWER MAIN

600' SCALE MAP NO. 42 BLOCK NO.

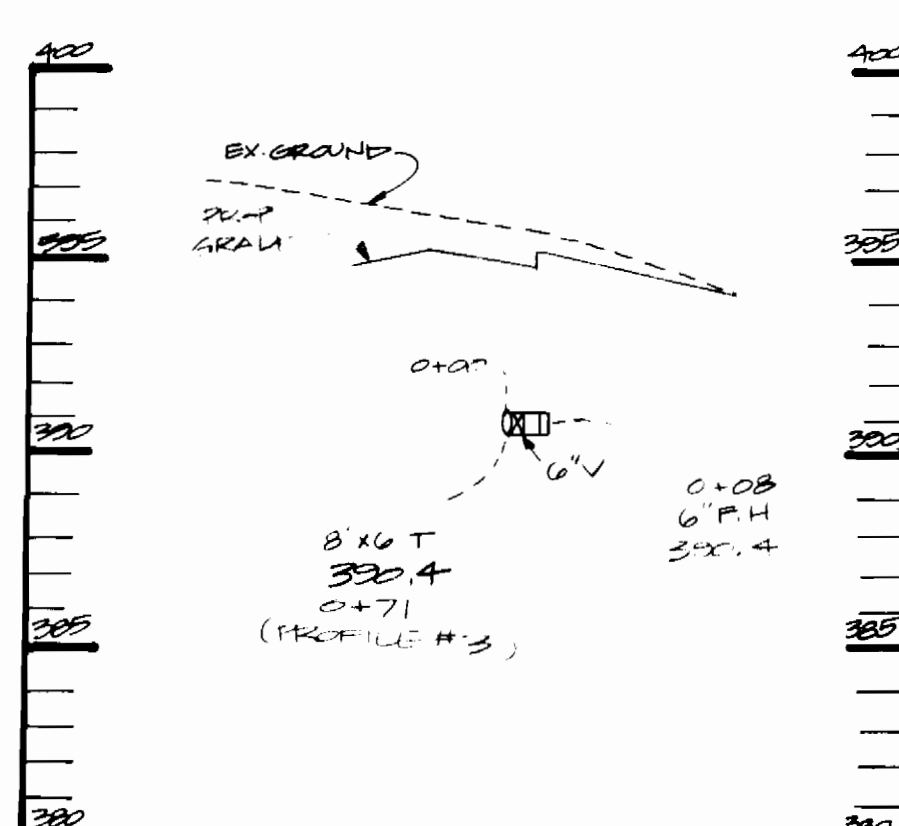
CONNELL PROPERTY  
 6th ELECTION DISTRICT  
 HOWARD COUNTY, MARYLAND  
 CONTRACT NO. 24-1785-D

SCALE AS SHOWN

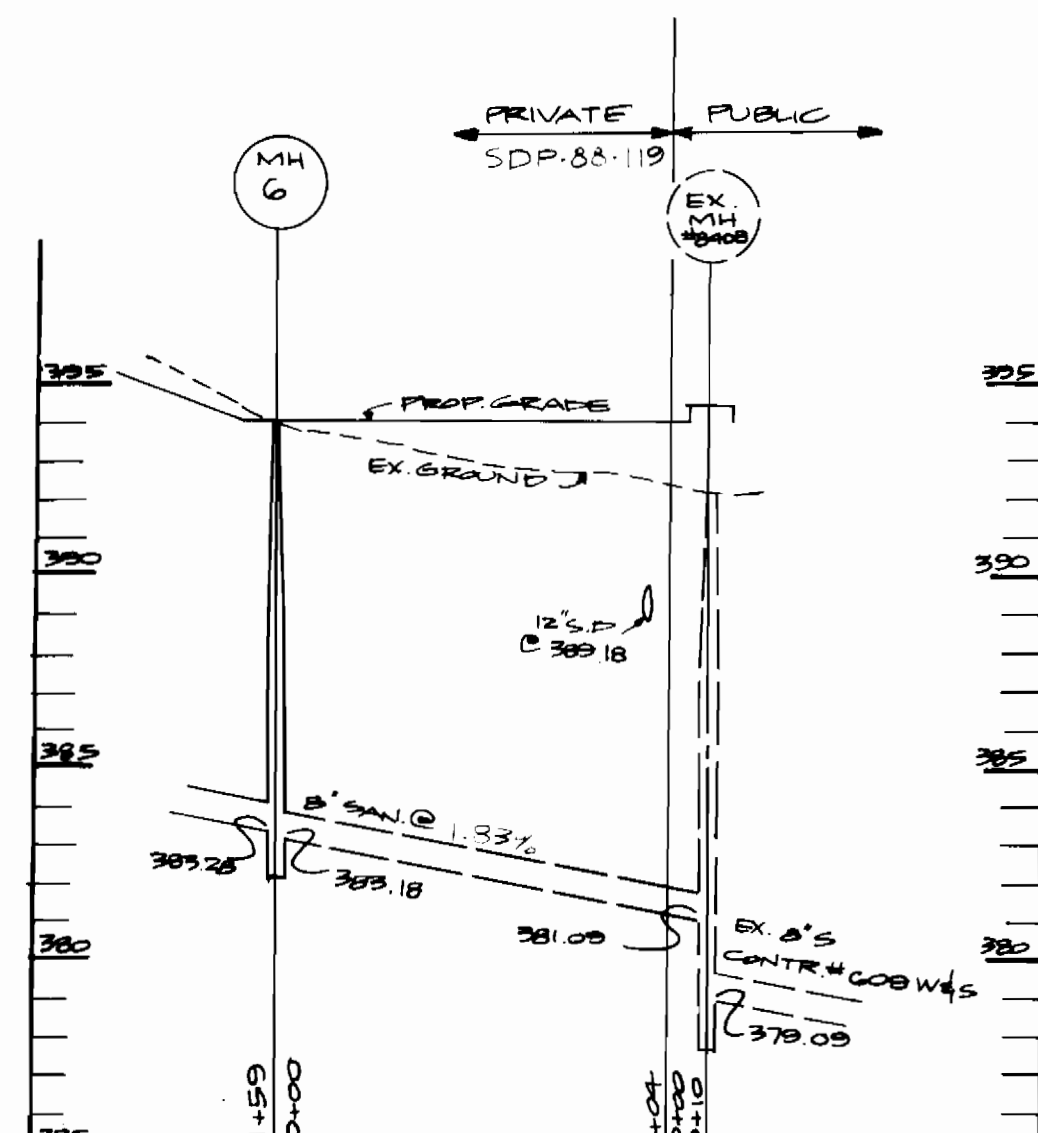
SHEET 1 OF 2



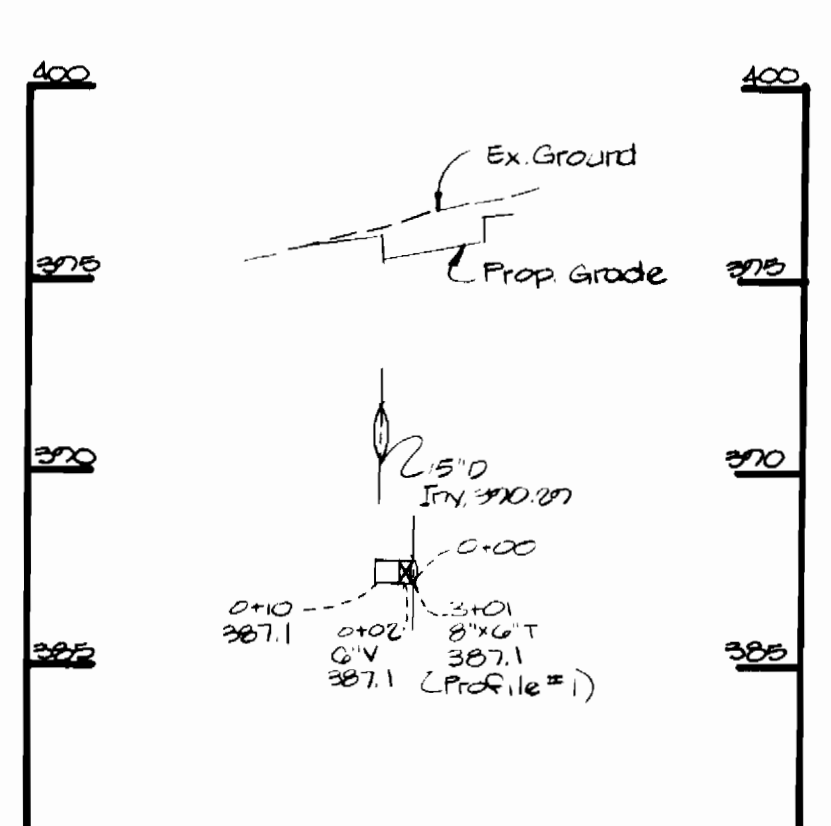
**PROFILE**  
SCALE: HORIZ. 1"=50'  
VERT. 1"=5'



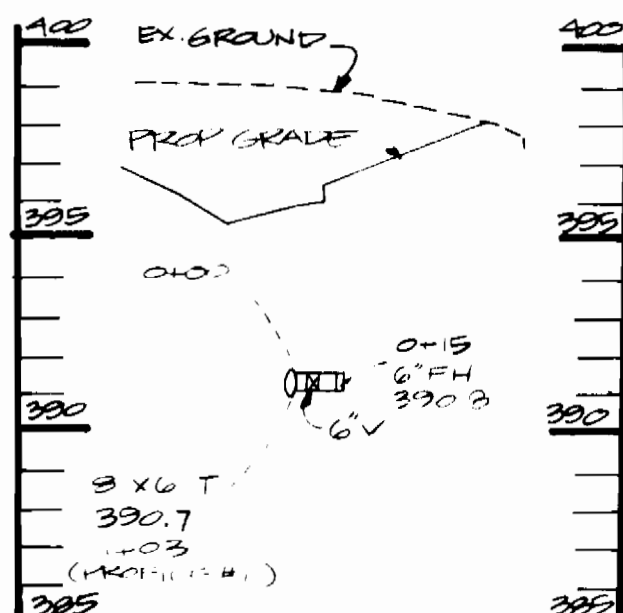
**PROFILE**  
SCALE: HORIZ. 1"=50'  
VERT. 1"=5'



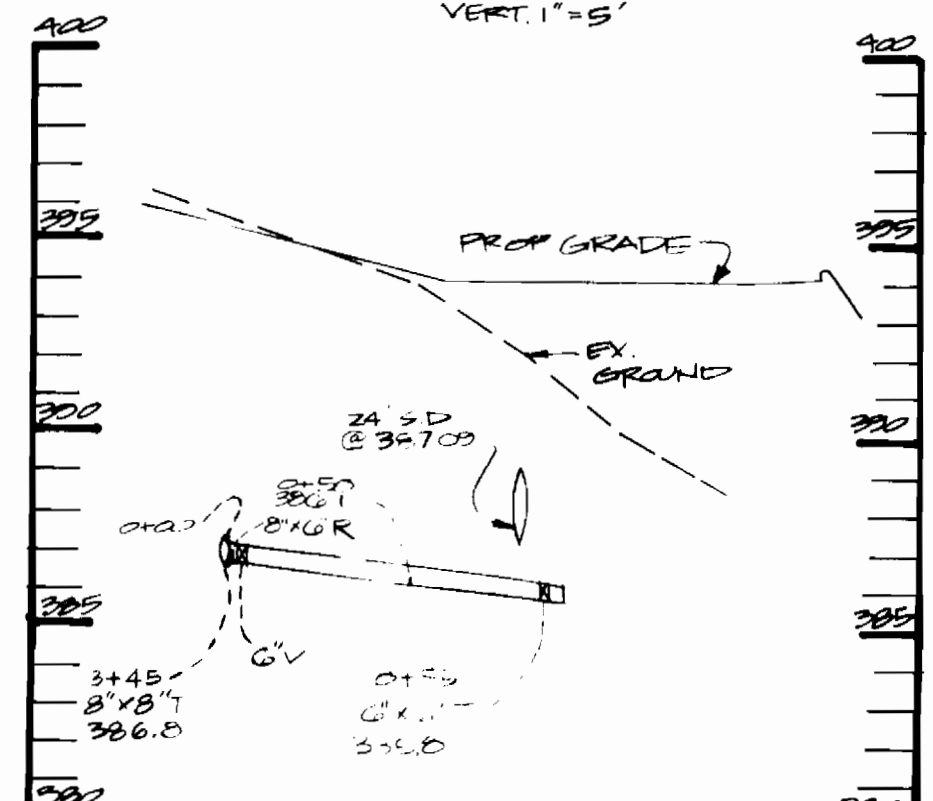
**PUBLIC SEWER PROFILE**  
SCALE: HORIZ. 1"=50'  
VERT. 1"=5'



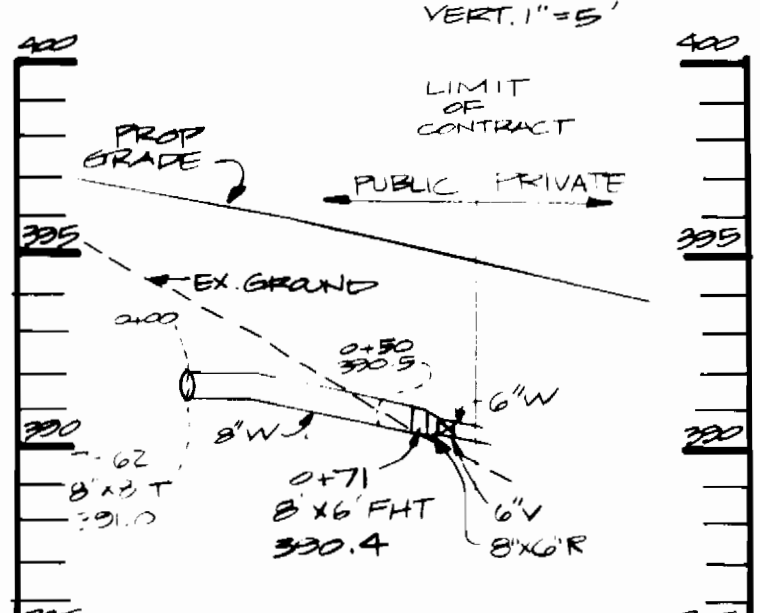
**PROFILE**  
SCALE: HORIZ. 1"=50'  
VERT. 1"=5'



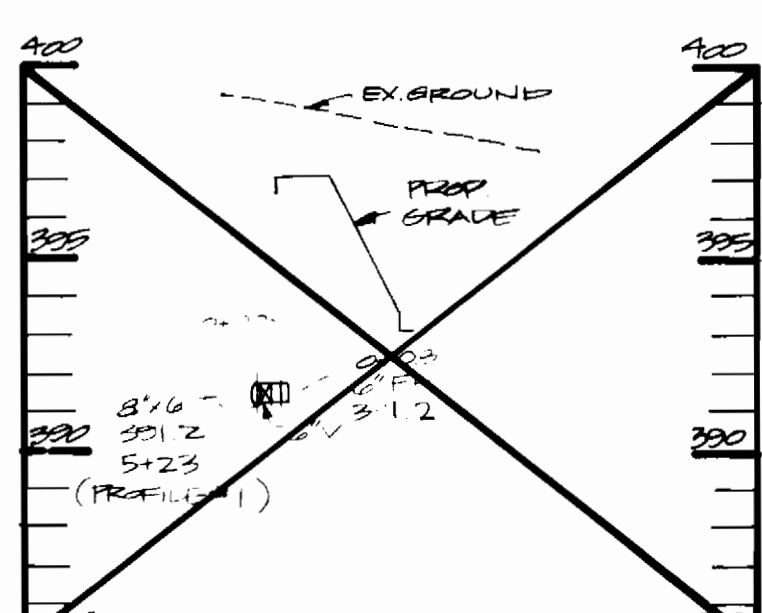
**PROFILE**  
SCALE: HORIZ. 1"=50'  
VERT. 1"=5'



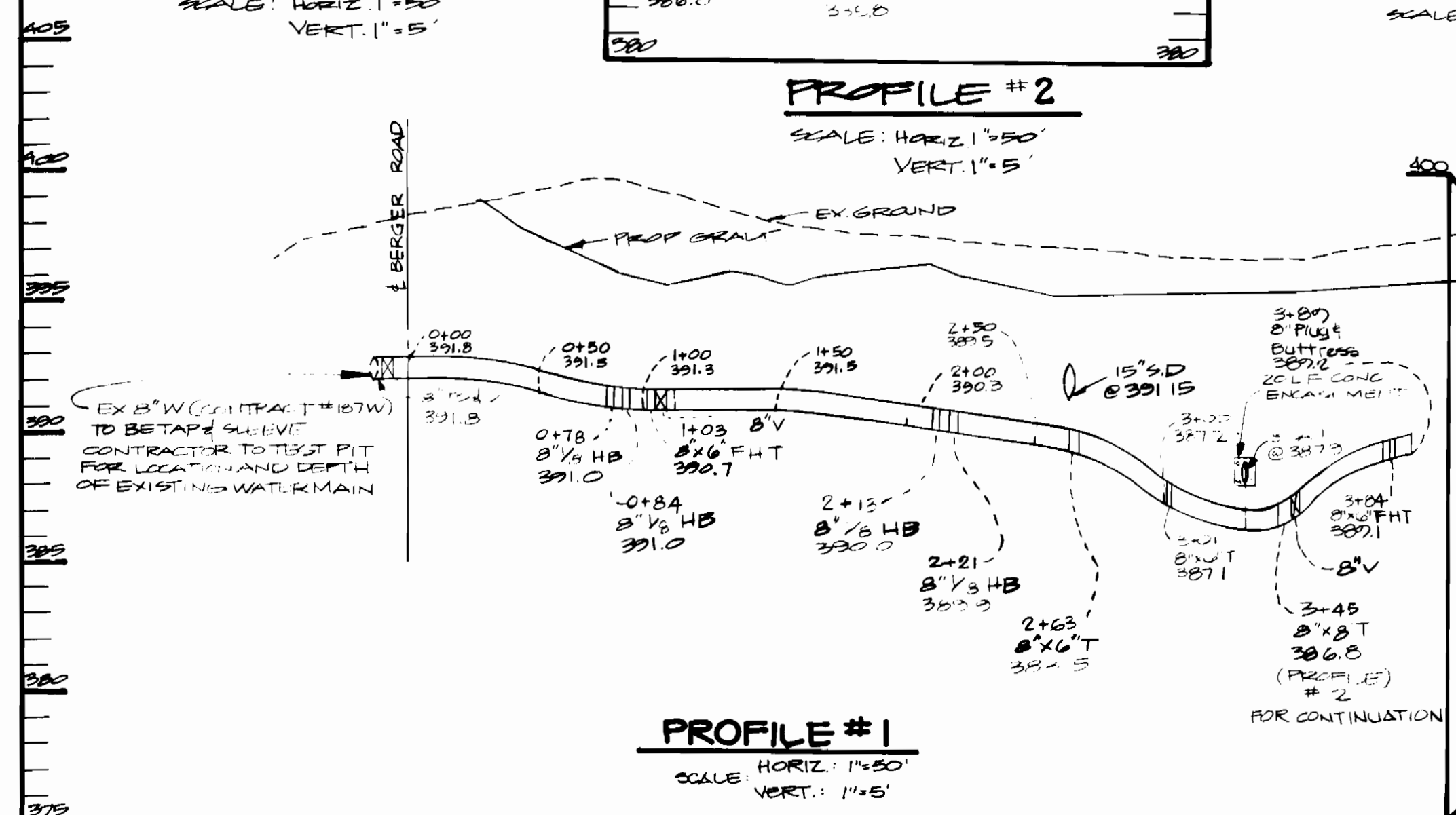
**PROFILE #2**  
SCALE: HORIZ. 1"=50'  
VERT. 1"=5'



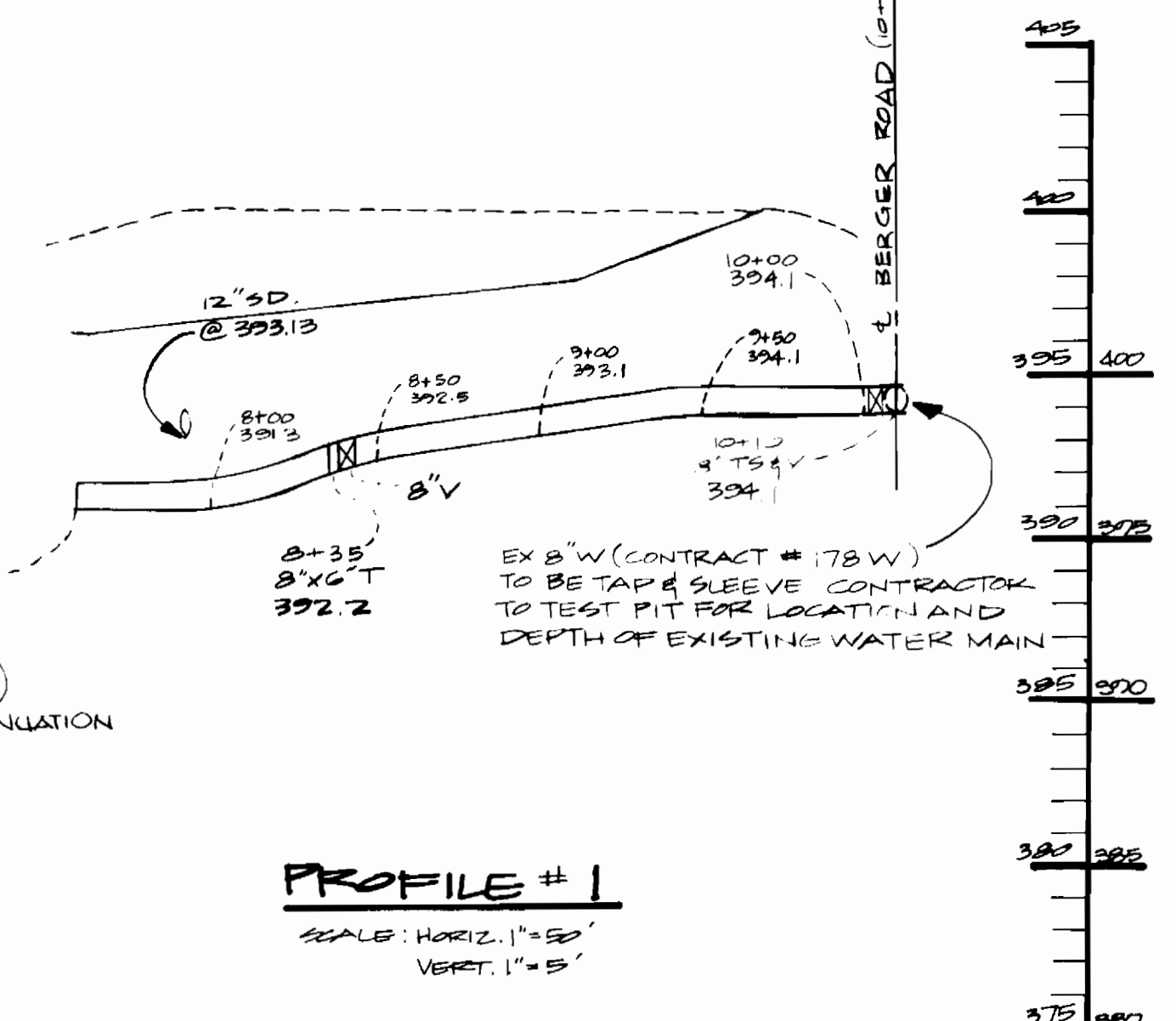
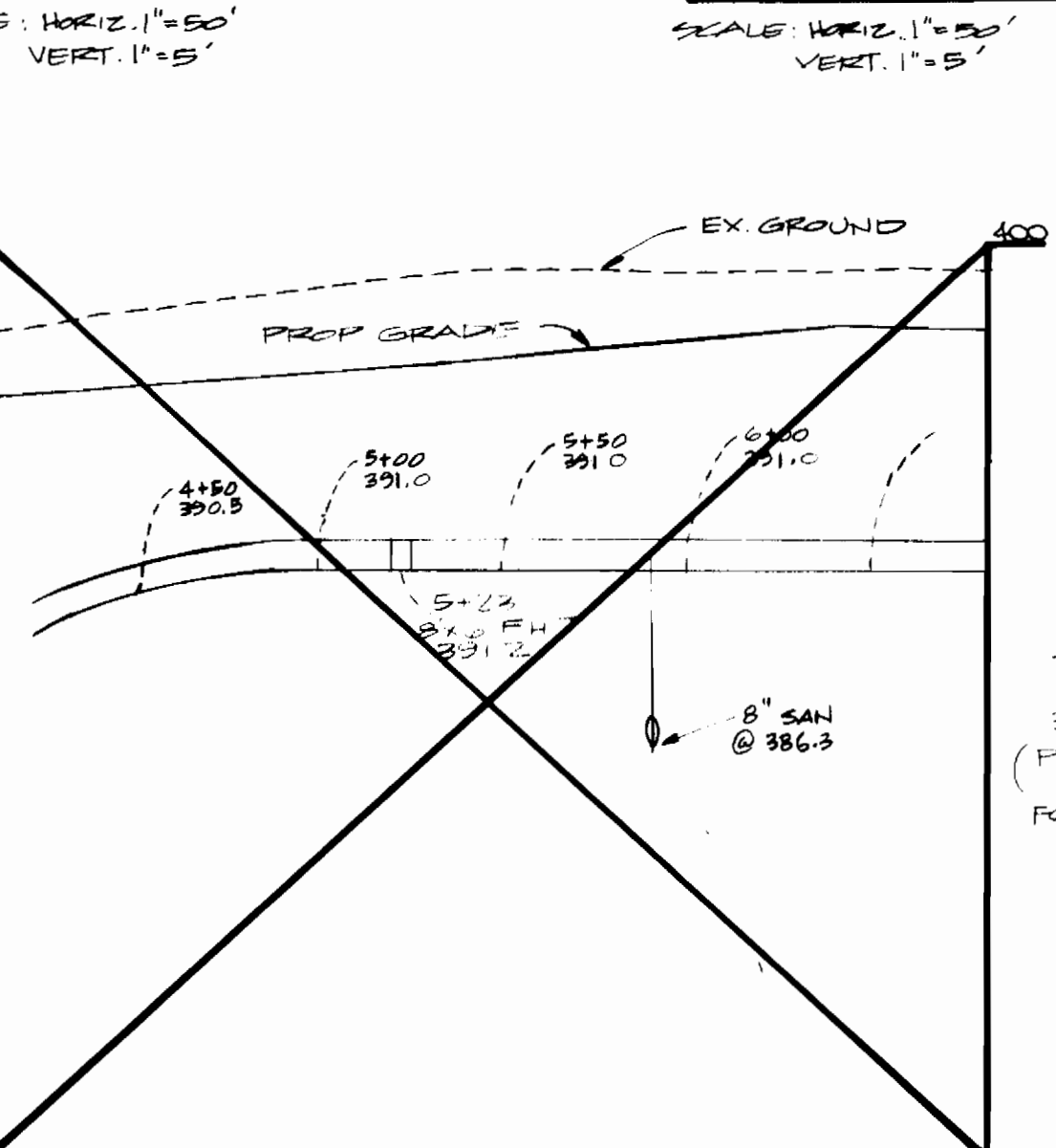
**PROFILE #3**  
SCALE: HORIZ. 1"=50'  
VERT. 1"=5'



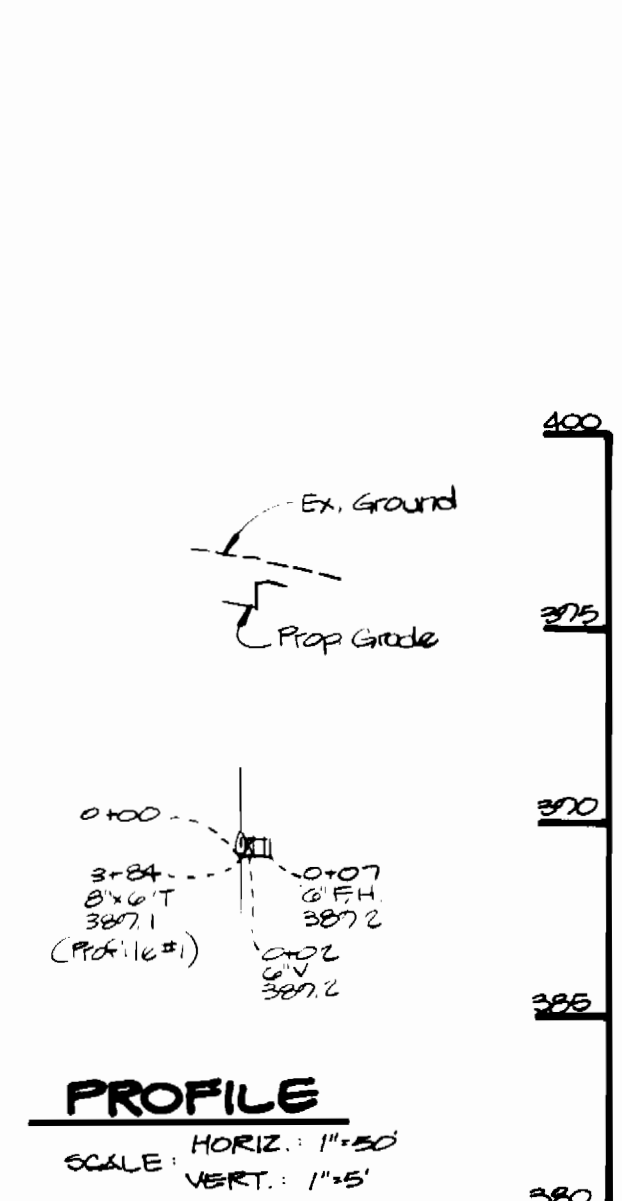
**PROFILE**  
SCALE: HORIZ. 1"=50'  
VERT. 1"=5'



**PROFILE #1**  
SCALE: HORIZ. 1"=50'  
VERT. 1"=5'



**PROFILE #1**  
SCALE: HORIZ. 1"=50'  
VERT. 1"=5'



**PROFILE**  
SCALE: HORIZ. 1"=50'  
VERT. 1"=5'

DEPARTMENT OF PUBLIC WORKS  
HOWARD COUNTY, MARYLAND

*Richard Berman* 5-12-88  
DIRECTOR OF PUBLIC WORKS DATE

*Richard Berman* 5-9-88  
CHIEF, BUREAU OF UTILITIES DATE

*Richard Berman* 5-11-88  
CHIEF, BUREAU OF ENGINEERING DATE

*Richard Berman*  
CHIEF, LAND DEVELOPMENT DATE

THE RIEMER GROUP INC.  
3105 NORTH RIDGE ROAD  
ELLCOTT CITY, MARYLAND  
(301) 481-2690



DES: J.L.B.	J.L.B.	CHANGES MADE ON PROFILES	6-27-88
DRN: J.L.B.	N.A.D.	REVISED WATER PROFILES	10-7-88
CHK: J.P.P.			
DATE: 1-8-88	BY NO.	REVISION	DATE

**PROFILES OF WATER MAIN AND SEWER MAIN**

600' SCALE MAP NO. 42 BLOCK NO.

CONNELL PROPERTY  
6th ELECTION DISTRICT  
HOWARD COUNTY, MARYLAND  
CONTRACT NO. 24-1785-D

SCALE AS SHOWN

SHEET 2 OF 2