

NOTE:

- * FOR ALL SEWER MANHOLES USE "STANDARD PRECAST MANHOLE" PER HO CO STD DETAIL G 3.11 & G 3.12
- * FOR MANHOLE 101 USE WATERTIGHT FRAME AND COVER PER HO CO STD DETAIL G 3.32
- * FOR ALL OTHER MANHOLES USE STD HEAVY TRAFFIC MANHOLE FRAME & COVER PER HO CO STD DETAIL G 3.31

SCALE:
 VERT: 1"=5'
 HORIZ: 1"=50'

DEPARTMENT OF PUBLIC WORKS
 HOWARD COUNTY, MARYLAND

James W. ... 7-27-88
 DIRECTOR OF PUBLIC WORKS DATE

Robert ... 7-27-88
 CHIEF, BUREAU OF UTILITIES DATE

... 7/27/88
 CHIEF, LAND DEVELOPMENT DIVISION DATE

PHR&A

PATTON, HARRIS, RUST & ASSOCIATES, P.C.
 7608 STANDISH PLACE
 ROCKVILLE, MARYLAND 20855
 METRO: 301-782-2210 BALT.: 301-792-7284



DES: M.J.K.			
DRN: J.D.W.			
CHK: R.E.T.			
DATE: G-16-88	MJK	1	REVISED PER HOWARD CO. COMMENTS, DATED 6/3/88
	BY	NO.	REVISION
			DATE

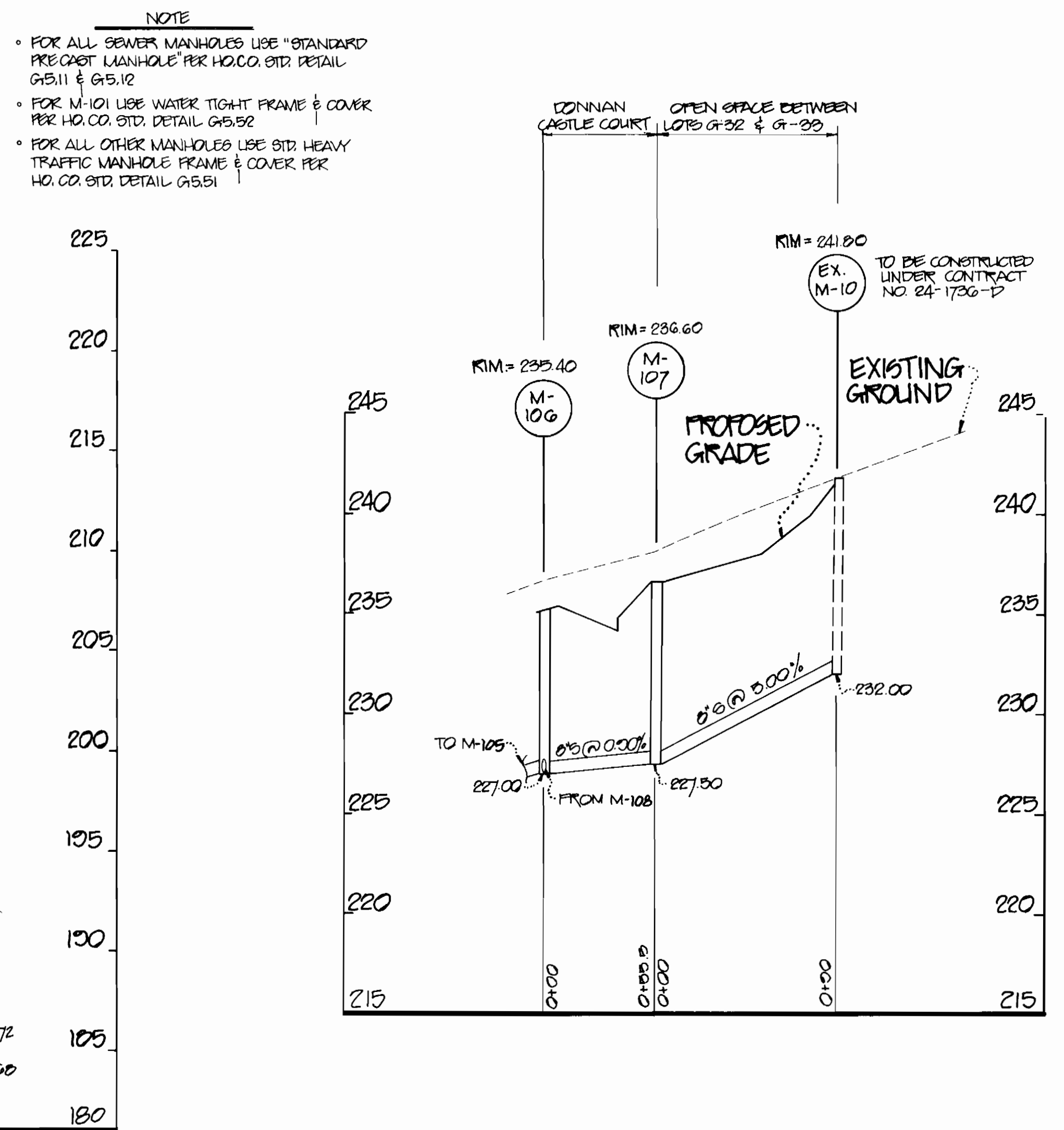
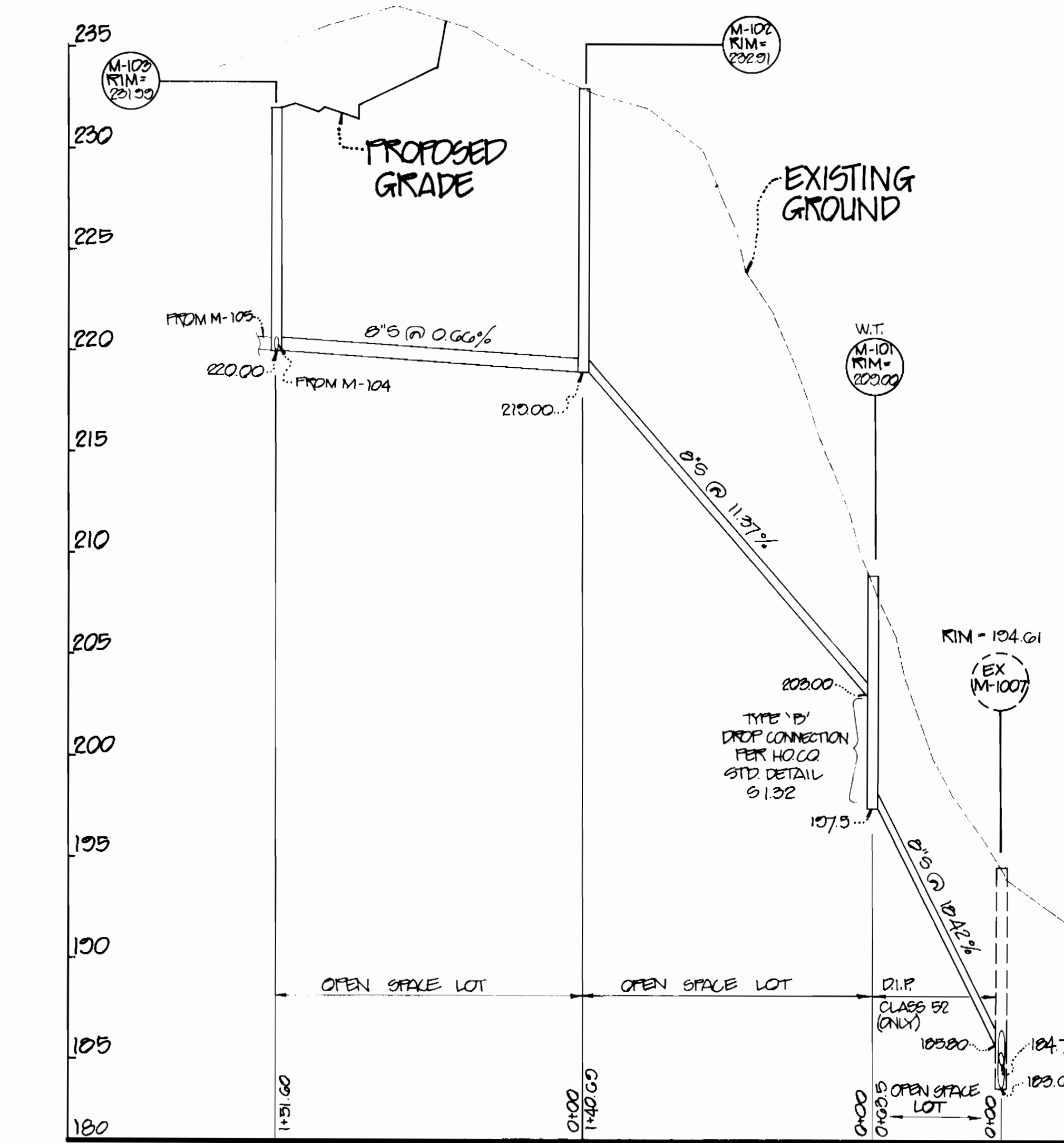
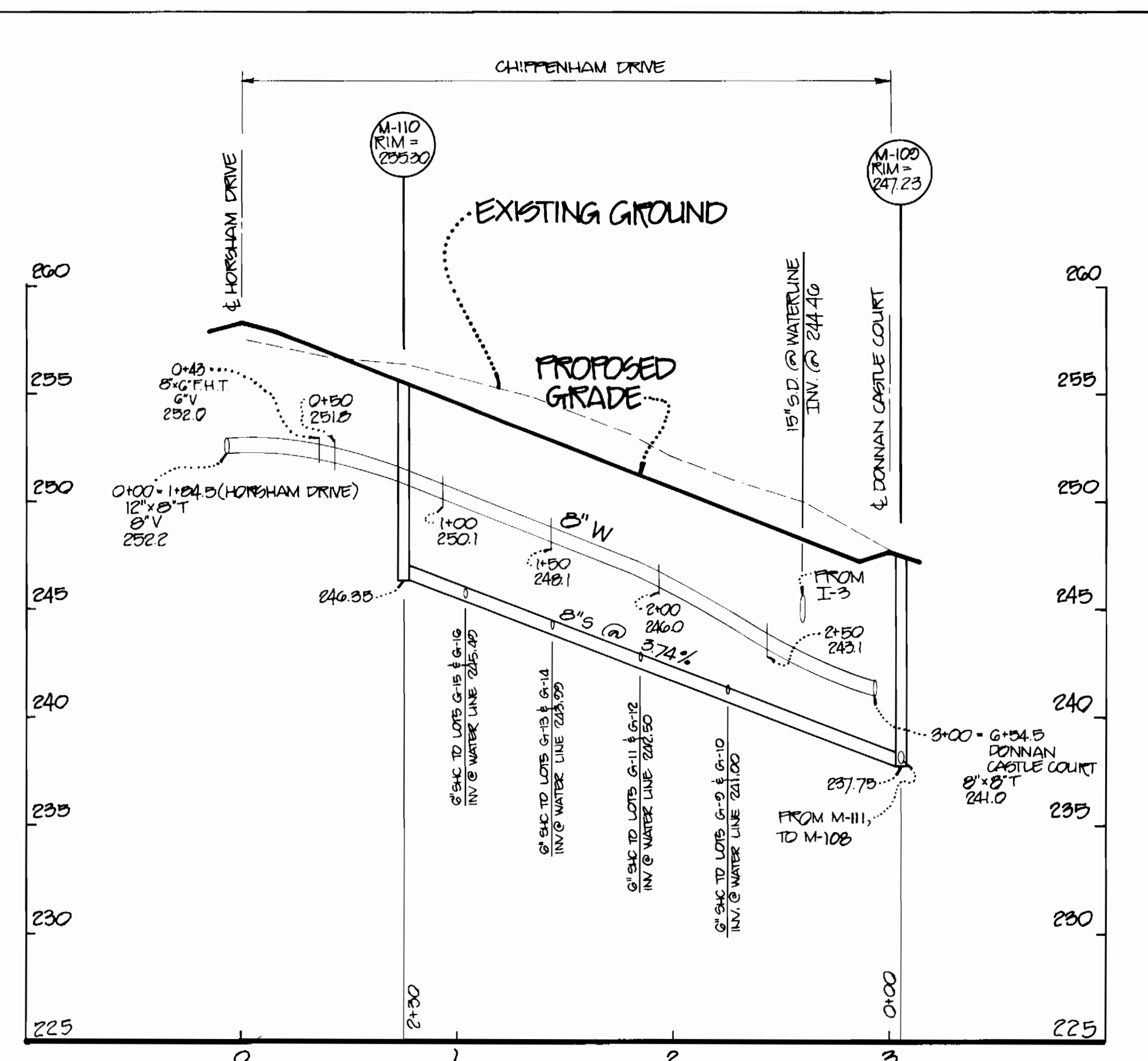
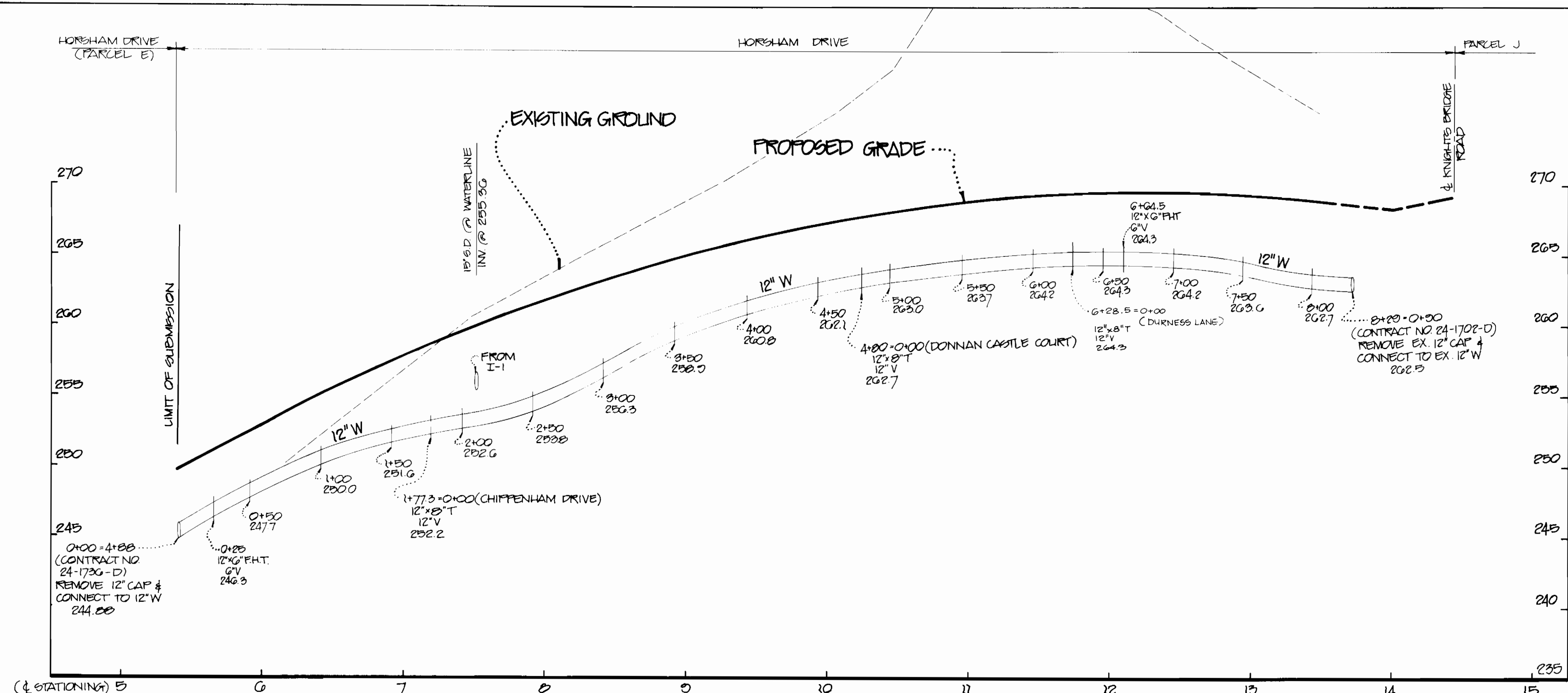
PROFILE
WATER & SEWER MAINS

600' SCALE MAP NO. 47 BLOCK NO.

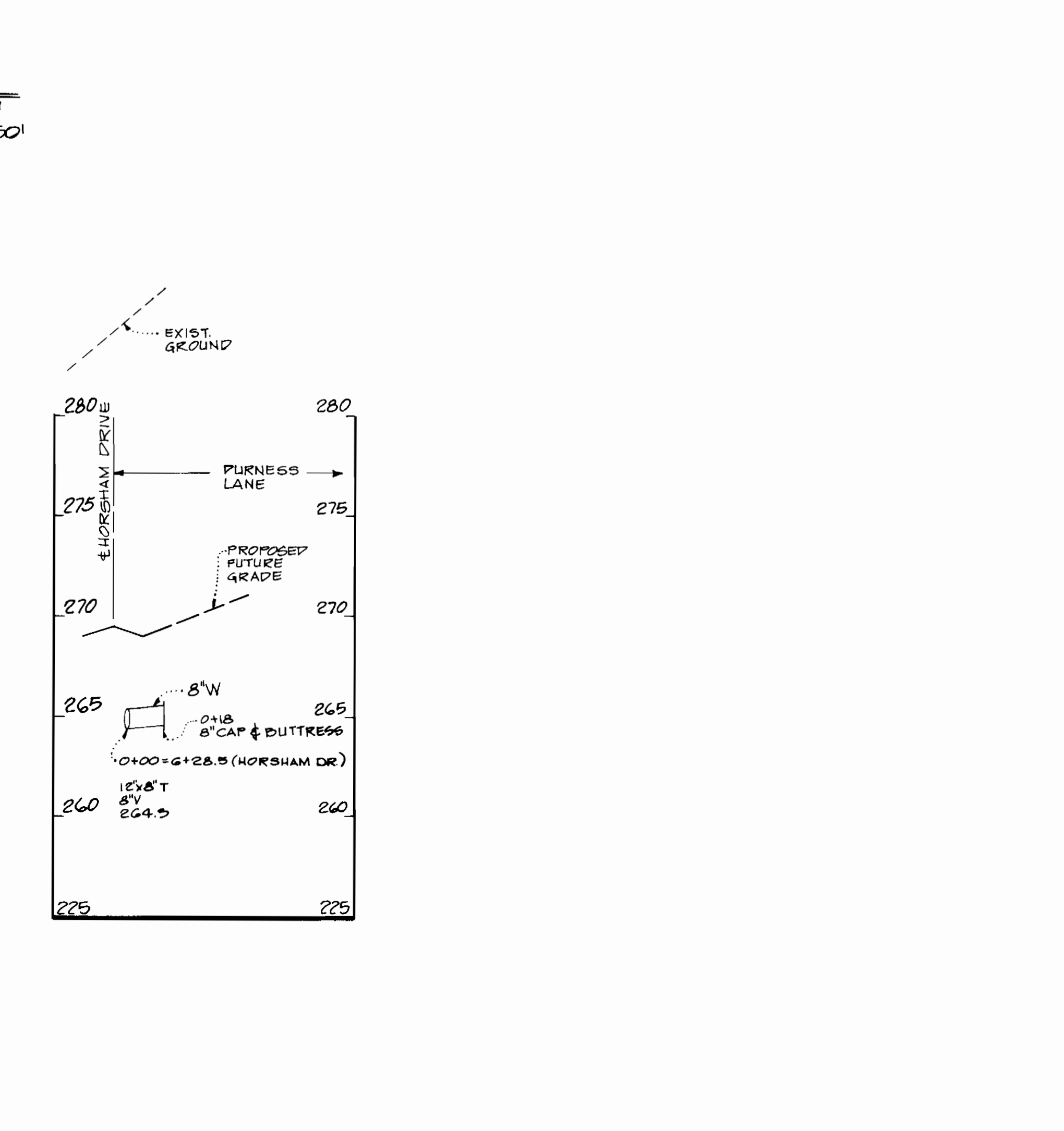
BOWLING BROOK FARMS
 PARCEL G AND H, SECTION 4, AREA 1
 LOTS G-1 THRU G-103 AND LOT 220
 CONTRACT NO. 24-1780-D

A RESUBDIVISION OF BOWLING BROOKE, LOT 2
 SIXTH ELECTION DISTRICT
 HOWARD COUNTY, MARYLAND

SCALE AS SHOWN
 SHEET 2 OF 4A



SCALE:
VERT: 1" = 5'
HORIZ: 1" = 50'



- NOTE
- FOR ALL SEWER MANHOLES USE "STANDARD PRE-CAST MANHOLE" PER H.C.C.O. STD. DETAIL G5.11 & G5.12
 - FOR M-101 USE WATER TIGHT FRAME & COVER PER H.C.C.O. STD. DETAIL G5.52
 - FOR ALL OTHER MANHOLES USE STD. HEAVY TRAFFIC MANHOLE FRAME & COVER PER H.C.C.O. STD. DETAIL G5.51

DEPARTMENT OF PUBLIC WORKS
HOWARD COUNTY, MARYLAND

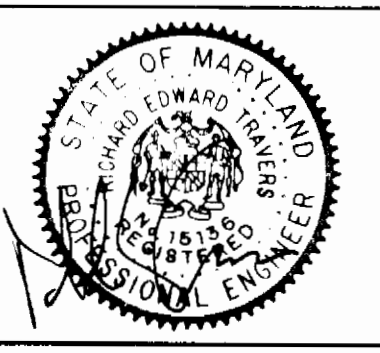
James J. Lee 7/27/08
DIRECTOR OF PUBLIC WORKS

Richard J. Smith 7-22-08
CHIEF, BUREAU OF UTILITIES

Richard J. Smith 7/27/08
CHIEF, BUREAU OF ENGINEERING

Richard J. Smith 7/27/08
CHIEF, LAND DEVELOPMENT DIVISION

PHR&A
PATTON, HARRIS, RUST & ASSOCIATES, P.C.
7000 STANDISH PLACE
ROCKVILLE, MARYLAND 20855
METRO: 301-782-2220 BALT.: 301-782-7200



DES: M.J.K.	
DRN: J.D.W.	
CHK: R.E.T.	
DATE: 6-16-08	
BY: NG	
REVISION	
DATE: 6-22-08	

PROFILE
WATER & SEWER MAINS

600' SCALE MAP NO. 47 BLOCK NO.

BOWLING BROOK FARMS
PARCEL G AND H SECTION 4, AREA 1
LOTS G-1 THRU G-107 AND LOT 220
CONTRACT NO. 24-1780-D
ARESUBDIVISION OF BOLLING BROOKE, LOT 2
SIXTH ELECTION DISTRICT
HOWARD COUNTY, MARYLAND

SCALE AS SHOWN
SHEET 4 OF 4A

SEWER AS BUILT				WATER AS BUILT							
lot G-1	Manhole # 112	89'	lot G-53	Manhole # 103	68'	lot G-1	Manhole # 112	80'	lot G-53	Manhole # 103	60'
lot G-2	Fire Hydrant Donna Castle Cr. Sta: 0138	80'	lot G-54	Manhole # 105	121'	lot G-2	Fire Hydrant Donna Castle Cr. Sta: 0138	69'	lot G-54	Manhole # 105	108'
lot G-3	Manhole # 112	84'	lot G-55	Manhole # 103	134'	lot G-3	Manhole # 112	98'	lot G-55	Manhole # 103	137'
lot G-4	Fire Hydrant Donna Castle Cr. Sta: 0138	93'	lot G-56	Manhole # 104	29'	lot G-4	Fire Hydrant Donna Castle Cr. Sta: 0138	106'	lot G-56	Manhole # 104	85'
lot G-5	Manhole # 112	124'	lot G-57	Manhole # 103	56'	lot G-5	Manhole # 112	110'	lot G-57	Manhole # 103	51'
lot G-6	Fire Hydrant Donna Castle Cr. Sta: 0138	119'	lot G-58	Manhole # 104	128'	lot G-6	Fire Hydrant Donna Castle Cr. Sta: 0138	108'	lot G-58	Manhole # 104	138'
lot G-7	Manhole # 111	123'	lot G-59	Manhole # 103	124'	lot G-7	Manhole # 111	138'	lot G-59	Manhole # 103	110'
lot G-8	Fire Hydrant Donna Castle Cr. Sta: 3126	127'	lot G-60	Manhole # 104	58'	lot G-8	Fire Hydrant Donna Castle Cr. Sta: 3126	144'	lot G-60	Manhole # 104	68'
lot G-9	Manhole # 109	84'	lot G-61	Manhole # 103	84'	lot G-9	Manhole # 109	146'	lot G-61	Manhole # 103	72'
lot G-10	Fire Hydrant Donna Castle Cr. Sta: 7103	152'	lot G-62	Manhole # 104	93'	lot G-10	Fire Hydrant Donna Castle Cr. Sta: 7103	142'	lot G-62	Manhole # 104	105'
lot G-11	Manhole # 109	143'	lot G-63	Manhole # 103	88'	lot G-11	Manhole # 109	130'	lot G-63	Manhole # 103	77'
lot G-12	Donna Castle Cr. Fire Hydrant Sta: 7103	134'	lot G-64	Manhole # 104	88'	lot G-12	Donna Castle Cr. Fire Hydrant Sta: 7103	120'	lot G-64	Manhole # 104	101'
lot G-13	Manhole # 110	111'	lot G-65	Manhole # 109	120'	lot G-13	Manhole # 110	115'	lot G-65	Manhole # 109	104'
lot G-14	Fire Hydrant Chippendale Dr. Sta: 0136	106'	lot G-66	Manhole # 108	61'	lot G-14	Fire Hydrant Chippendale Dr. Sta: 0136	97'	lot G-66	Manhole # 108	78'
lot G-15	Manhole # 110	96'	lot G-67	Manhole # 109	125'	lot G-15	Manhole # 110	86'	lot G-67	Manhole # 109	53'
lot G-16	Fire Hydrant Chippendale Dr. Sta: 0136	92'	lot G-68	Manhole # 103	97'	lot G-16	Fire Hydrant Chippendale Dr. Sta: 0136	86'	lot G-68	Manhole # 103	133'
lot G-17	Manhole # 109	82'	lot G-69	Manhole # 109	173'	lot G-17	Manhole # 109	83'	lot G-69	Manhole # 109	183'
lot G-18	Fire Hydrant Donna Castle Cr. Sta: 7103	99'	lot G-70	Manhole # 108	67'	lot G-18	Fire Hydrant Donna Castle Cr. Sta: 7103	74'	lot G-70	Manhole # 108	78'
lot G-19	Manhole # 109	101'	lot G-71	Manhole # 109	62'	lot G-19	Manhole # 109	110'	lot G-71	Manhole # 109	50'
lot G-20	Fire Hydrant Chippendale Dr. Sta: 0136	97'	lot G-72	Manhole # 103	168'	lot G-20	Fire Hydrant Chippendale Dr. Sta: 0136	115'	lot G-72	Manhole # 103	154'
lot G-21	Manhole # 109	129'	lot G-73	Manhole # 108	136'	lot G-21	Manhole # 109	115'	lot G-73	Manhole # 108	149'
lot G-22	Donna Castle Cr. Fire Hydrant Sta: 7103	126'	lot G-74	Manhole # 109	35'	lot G-22	Donna Castle Cr. Fire Hydrant Sta: 7103	101'	lot G-74	Manhole # 109	45'
lot G-23	Manhole # 112	114'	lot G-75	Manhole # 109	30'	lot G-23	Manhole # 112	131'	lot G-75	Manhole # 109	25'
lot G-24	Fire Hydrant Chippendale Dr. Sta: 0136	145'	lot G-76	Manhole # 108	131'	lot G-24	Fire Hydrant Chippendale Dr. Sta: 0136	125'	lot G-76	Manhole # 108	119'
lot G-25	Manhole # 110	116'	lot G-77	Manhole # 109	102'	lot G-25	Manhole # 110	96'	lot G-77	Manhole # 109	114'
lot G-26	Fire Hydrant Donna Castle Cr. Sta: 0136	83'	lot G-78	Manhole # 109	91'	lot G-26	Fire Hydrant Donna Castle Cr. Sta: 0136	69'	lot G-78	Manhole # 109	26'
lot G-27	Manhole # 112	80'	lot G-79	Manhole # 109	34'	lot G-27	Manhole # 112	62'	lot G-79	Manhole # 109	46'
lot G-28	Fire Hydrant Chippendale Dr. Sta: 0136	106'	lot G-80	Manhole # 109	95'	lot G-28	Fire Hydrant Chippendale Dr. Sta: 0136	92'	lot G-80	Manhole # 109	85'
lot G-29	Manhole # 110	72'	lot G-81	Manhole # 109	72'	lot G-29	Manhole # 110	86'	lot G-81	Manhole # 109	50'
lot G-30	Fire Hydrant Donna Castle Cr. Sta: 7103	55'	lot G-82	Manhole # 109	72'	lot G-30	Fire Hydrant Donna Castle Cr. Sta: 7103	48'	lot G-82	Manhole # 109	80'
lot G-31	Manhole # 109	52'	lot G-83	Manhole # 109	66'	lot G-31	Manhole # 109	58'	lot G-83	Manhole # 109	62'
lot G-32	Manhole # 106	86'	lot G-84	Manhole # 109	42'	lot G-32	Manhole # 106	79'	lot G-84	Manhole # 109	41'
lot G-33	Manhole # 104	86'	lot G-85	Manhole # 109	92'	lot G-33	Manhole # 104	56'	lot G-85	Manhole # 109	85'
lot G-34	Manhole # 104	84'	lot G-86	Manhole # 109	49'	lot G-34	Manhole # 104	56'	lot G-86	Manhole # 109	106'
lot G-35	Manhole # 106	90'	lot G-87	Manhole # 109	72'	lot G-35	Manhole # 106	56'	lot G-87	Manhole # 109	76'
lot G-36	Manhole # 104	66'	lot G-88	Manhole # 109	72'	lot G-36	Manhole # 104	74'	lot G-88	Manhole # 109	72'
lot G-37	Manhole # 104	80'	lot G-89	Manhole # 109	49'	lot G-37	Manhole # 104	44'	lot G-89	Manhole # 109	184'
lot G-38	Manhole # 104	80'	lot G-90	Manhole # 109	112'	lot G-38	Manhole # 104	76'	lot G-90	Manhole # 109	212'
lot G-39	Manhole # 105	72'	lot G-91	Manhole # 109	72'	lot G-39	Manhole # 105	74'	lot G-91	Manhole # 109	174'
lot G-40	Manhole # 105	94'	lot G-92	Manhole # 109	124'	lot G-40	Manhole # 105	91'	lot G-92	Manhole # 109	141'
lot G-41	Manhole # 103	127'	lot G-93	Manhole # 109	83'	lot G-41	Manhole # 103	118'	lot G-93	Manhole # 109	112'
lot G-42	Manhole # 103	89'	lot G-94	Manhole # 109	96'	lot G-42	Manhole # 103	112'	lot G-94	Manhole # 109	109'
lot G-43	Manhole # 105	83'	lot G-95	Manhole # 109	87'	lot G-43	Manhole # 105	112'	lot G-95	Manhole # 109	106'
lot G-44	Manhole # 105	87'	lot G-96	Manhole # 109	94'	lot G-44	Manhole # 105	112'	lot G-96	Manhole # 109	106'
lot G-45	Manhole # 103	84'	lot G-97	Manhole # 109	87'	lot G-45	Manhole # 103	112'	lot G-97	Manhole # 109	106'
lot G-46	Manhole # 103	84'	lot G-98	Manhole # 109	94'	lot G-46	Manhole # 103	112'	lot G-98	Manhole # 109	106'
lot G-47	Manhole # 103	84'	lot G-99	Manhole # 109	87'	lot G-47	Manhole # 103	112'	lot G-99	Manhole # 109	106'
lot G-48	Manhole # 103	84'	lot G-100	Manhole # 109	94'	lot G-48	Manhole # 103	112'	lot G-100	Manhole # 109	106'
lot G-49	Manhole # 103	84'			87'	lot G-49	Manhole # 103	112'			106'
lot G-50	Manhole # 103	84'			94'	lot G-50	Manhole # 103	112'			106'
lot G-51	Manhole # 103	84'			87'	lot G-51	Manhole # 103	112'			106'
lot G-52	Manhole # 103	84'			94'	lot G-52	Manhole # 103	112'			106'
lot G-53	Manhole # 103	84'			87'	lot G-53	Manhole # 103	112'			106'

DEPARTMENT OF PUBLIC WORKS HOWARD COUNTY, MARYLAND		DES: _____ DRN: _____ CHK: _____ DATE: _____		SEWER & WATER AS BUILT CONTRACT NO. 24-1780-D		BOWLING BROOK PARK G-1 THRU G-103 KATHY WILSON		SCALE AS SHOWN
DIRECTOR OF PUBLIC WORKS _____ DATE _____ CHIEF, BUREAU OF ENGINEERING _____ DATE _____		BY _____ NO. _____		REVISION _____		SHEET 48 OF 48		APRIL 02-07-89