

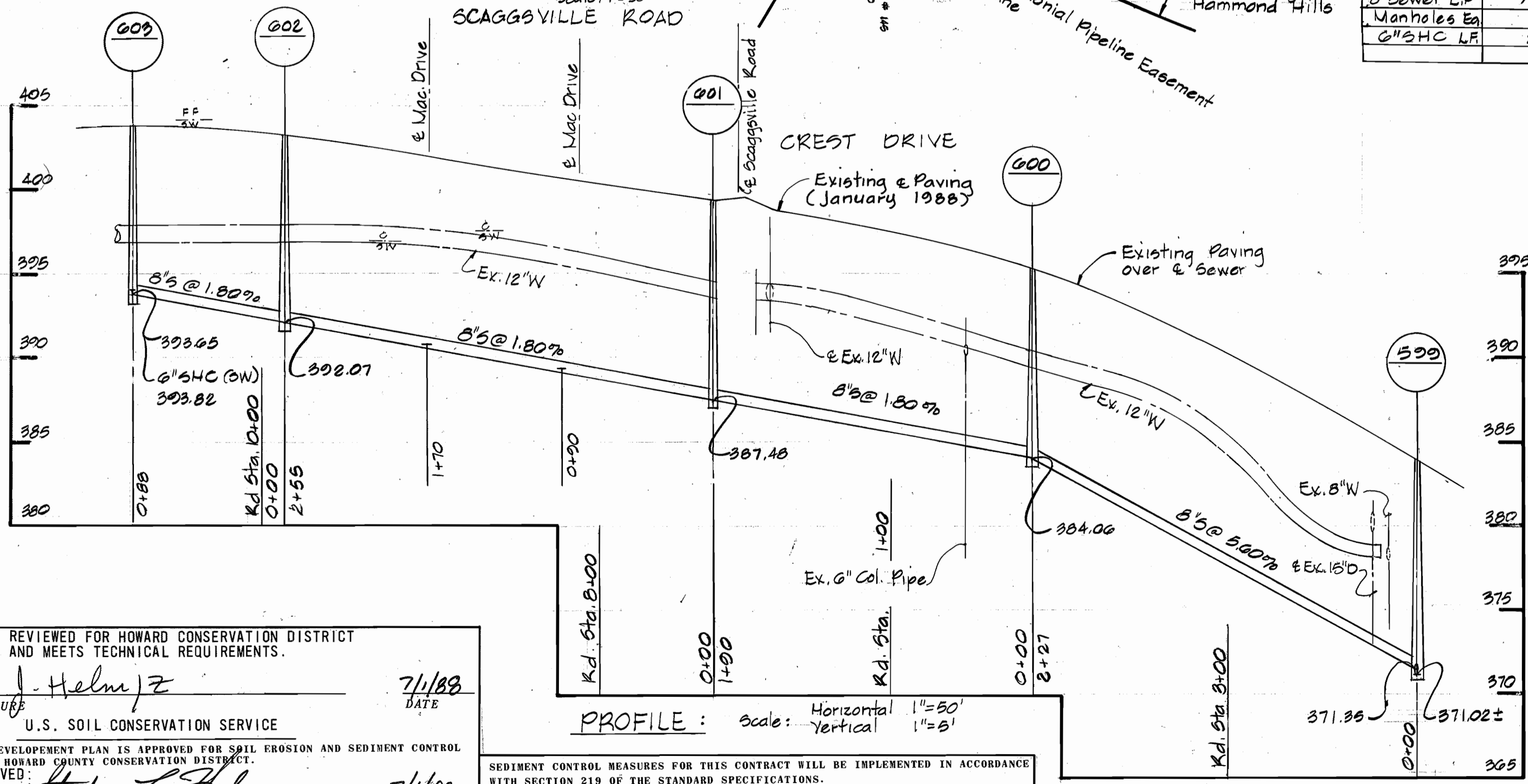
WASTEWATER DISPOSAL: Patapsco
 DRAINAGE AREA: Little Patuxent
 NO. OF SHC: 3
 NO. OF WHC: N/A
 WATER AND SEWER CODE
 (COUNTY USE):
 WATER: N/A
 SEWER: 7600000

VICINITY MAP
 SCALE: 1" = 600'

GENERAL NOTES

- APPROXIMATE LOCATION OF EXISTING MAINS ARE SHOWN. THE CONTRACTOR SHALL TAKE ALL NECESSARY PRECAUTIONS TO PROTECT EXISTING MAINS AND SERVICES AND MAINTAIN UNINTERRUPTED SUPPLY. ANY DAMAGE INCURRED SHALL BE REPAIRED IMMEDIATELY TO THE SATISFACTION OF THE ENGINEER, AT THE CONTRACTOR'S EXPENSE.
- ALL HORIZONTAL CONTROLS ARE BASED ON MARYLAND STATE COORDINATES.
- ALL VERTICAL CONTROLS ARE BASED ON U.S.G.S. DATUM.
- ALL PIPE ELEVATIONS SHOWN ARE INVERT ELEVATIONS.
- CLEAR ALL UTILITIES BY A MINIMUM OF 6".
- FOR DETAILS NOT SHOWN ON THE DRAWINGS, AND FOR MATERIALS AND CONSTRUCTION METHODS USE HOWARD COUNTY DESIGN MANUAL, VOLUME IV, STANDARD SPECIFICATIONS AND DETAILS FOR CONSTRUCTION. THE CONTRACTOR SHALL HAVE A COPY OF VOLUME IV ON THE JOB.
- WHERE TEST PITS HAVE BEEN MADE ON EXISTING UTILITIES, THEY ARE NOTED BY THE SYMBOL [] AT THE LOCATION OF THE TEST PIT. A NOTE OR NOTES CONTAINING THE RESULTS OF THE TEST PIT OR PITS IS INCLUDED ON THE DRAWINGS. EXISTING UTILITIES IN THE VICINITY OF THE PROPOSED WORK FOR WHICH TEST PITS HAVE BEEN DUG SHALL BE VERIFIED BY THE CONTRACTOR TO HIS OWN SATISFACTION. ANY DAMAGE TO EXISTING FACILITIES DUE TO THE CONTRACTOR'S NEGLIGENCE SHALL BE REPAIRED AT THE CONTRACTOR'S EXPENSE.
- CONTRACTOR SHALL NOTIFY THE FOLLOWING UTILITIES OR AGENCIES AT LEAST FIVE WORKING DAYS BEFORE STARTING WORK SHOWN ON THESE PLANS:
 STATE HIGHWAY ADMINISTRATION - 531-5533
 BALTIMORE GAS AND ELECTRIC CO. - CONTRACTOR SERVICES - 850-4620
 BALTIMORE GAS AND ELECTRIC CO. - UNDER GROUND DAMAGE CONTROL - 859-9004
 BALTIMORE GAS AND ELECTRIC CO. - TROUBLE SHOOTING - 298-9001
 MISS UTILITY - 1 - 559-0100
 COLONIAL PIPELINE CO. - 795-1390
 C&P TELEPHONE CO. - 1 - 800-257-7777
 BUREAU OF UTILITIES, HOWARD COUNTY DEPARTMENT OF PUBLIC WORKS - 992-2366
- TREES AND SHRUBS ARE TO BE PROTECTED FROM DAMAGE TO MAXIMUM EXTENT. TREES AND SHRUBS LOCATED WITHIN THE CONSTRUCTION STRIP ARE NOT TO BE REMOVED OR DAMAGED BY THE CONTRACTOR.
- CONTRACTOR SHALL REMOVE TREES, STUMPS AND ROOTS ALONG LINE OF EXCAVATION. PAYMENT FOR SUCH REMOVAL SHALL BE INCLUDED IN THE UNIT PRICE BID FOR CONSTRUCTION OF THE MAIN.
- ALL SEWER MAINS SHALL BE C.S.P.X., D.I.P., V.C.P.X., A.C.P. CLASS 2400 OR P.V.C. UNLESS OTHERWISE NOTED.
- THE CONTRACTOR SHALL PROVIDE A JOINT IN ALL SEWER MAINS WITHIN 2'-0" OF EXTERIOR MANHOLE WALL.
- ALL MANHOLES SHALL BE 4'-0" INSIDE DIAMETER UNLESS OTHERWISE NOTED.
- MANHOLES SHOWN WITH 12" AND 16" WALLS ARE FOR BRICK MANHOLES ONLY.
- MANHOLES DESIGNATED W.T. IN PLAN AND PROFILE SHALL HAVE WATERTIGHT FRAME AND COVERS, STANDARD DETAIL G5.52. WHERE WATERTIGHT MANHOLE FRAME AND COVER IS USED, SET TOP OF FRAME 1.5' ABOVE FINISHED GRADE UNLESS OTHERWISE NOTED ON THE DRAWINGS.
- STRAW BALE DIKE AND SILT FENCE ARE INTERCHANGEABLE.
- FOR MANHOLES IN OPEN SPACE OR OUTFALL, SET TOP OF FRAME 1.5' ABOVE FINISHED GRADE UNLESS OTHERWISE NOTED ON THE DRAWINGS.
- ALL SEWER HOUSE CONNECTIONS ARE TO BE OPEN CUT.

ITEM	QUANTITIES		MATERIAL SUPPLIER
	BID	AS BUILT	
8" Sewer LF	760		
Manholes Ea	5		
6" SHC LF	20		



RESTORATION SCHEDULE
 - CREST DRIVE -
 MH#599 through MH#601 replace Blacktop - SCAGGSVILLE ROAD -
 MH#601 to MH#602 replace Blacktop Shoulder and Blacktop at 2 Driveways.
 MH#602 to MH#603 replace Blacktop shoulder.

REVIEWED FOR HOWARD CONSERVATION DISTRICT AND MEETS TECHNICAL REQUIREMENTS.
 SIGNATURE: J. Helm JZ
 U.S. SOIL CONSERVATION SERVICE
 DATE: 7/1/88

APPROVED: Stephen L. Fisher
 HOWARD S.C.D.
 DATE: 7/1/88

PROFILE: scale: Horizontal 1"=50'
 Vertical 1"=5'

SEDIMENT CONTROL MEASURES FOR THIS CONTRACT WILL BE IMPLEMENTED IN ACCORDANCE WITH SECTION 219 OF THE STANDARD SPECIFICATIONS.

DEPARTMENT OF PUBLIC WORKS
 HOWARD COUNTY, MARYLAND
 DIRECTOR OF PUBLIC WORKS: [Signature] 7/6/88
 CHIEF, BUREAU OF ENGINEERING: [Signature] 7-7-88
 CHIEF, BUREAU OF UTILITIES: [Signature] 7-7-88

WHITMAN, REQUARDT AND ASSOCIATES ENGINEERS
 2315 ST PAUL ST
 BALTIMORE, MARYLAND

DES: G.J.
 DRN: R.C.
 CHK: KBN
 DATE: 9-18-88

VICINITY MAP
 PLAN AND PROFILE
 OF SEWER MAIN

SCAGGSVILLE ROAD SEWER
 ELECTION DISTRICT NO.6
 HOWARD COUNTY
 CONTRACT NO. 20-1777

SCALE AS SHOWN
 SHEET 1 OF 1