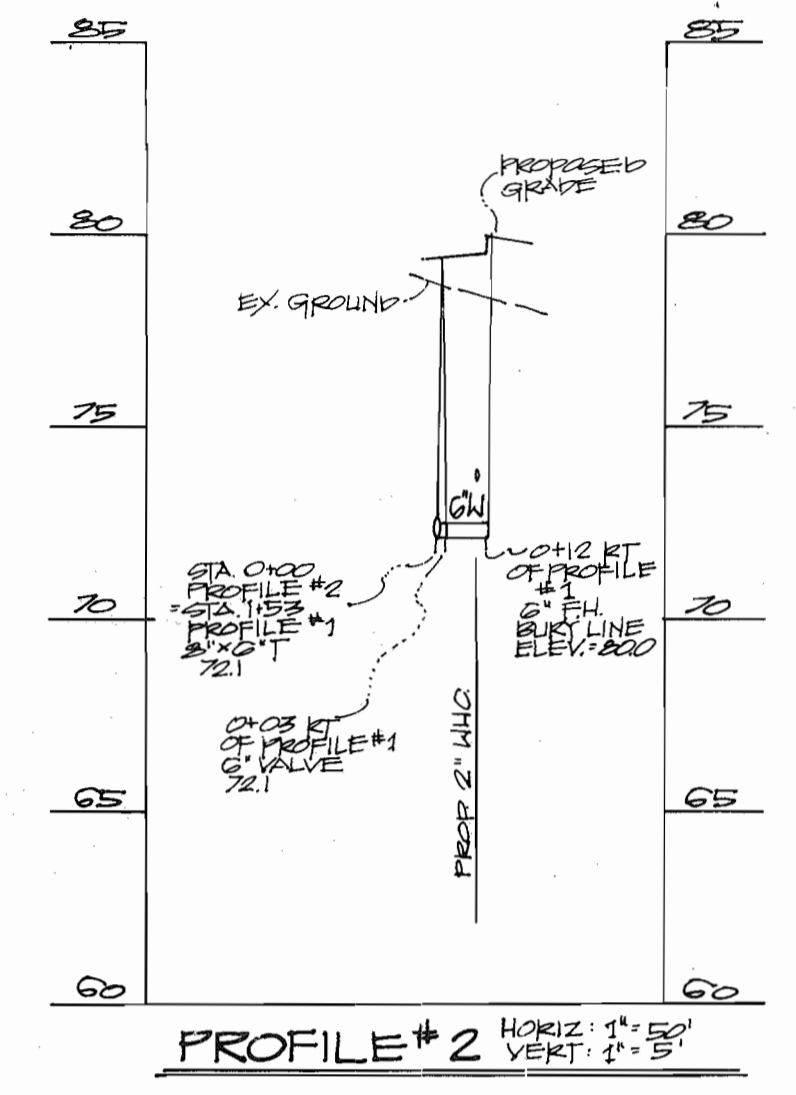
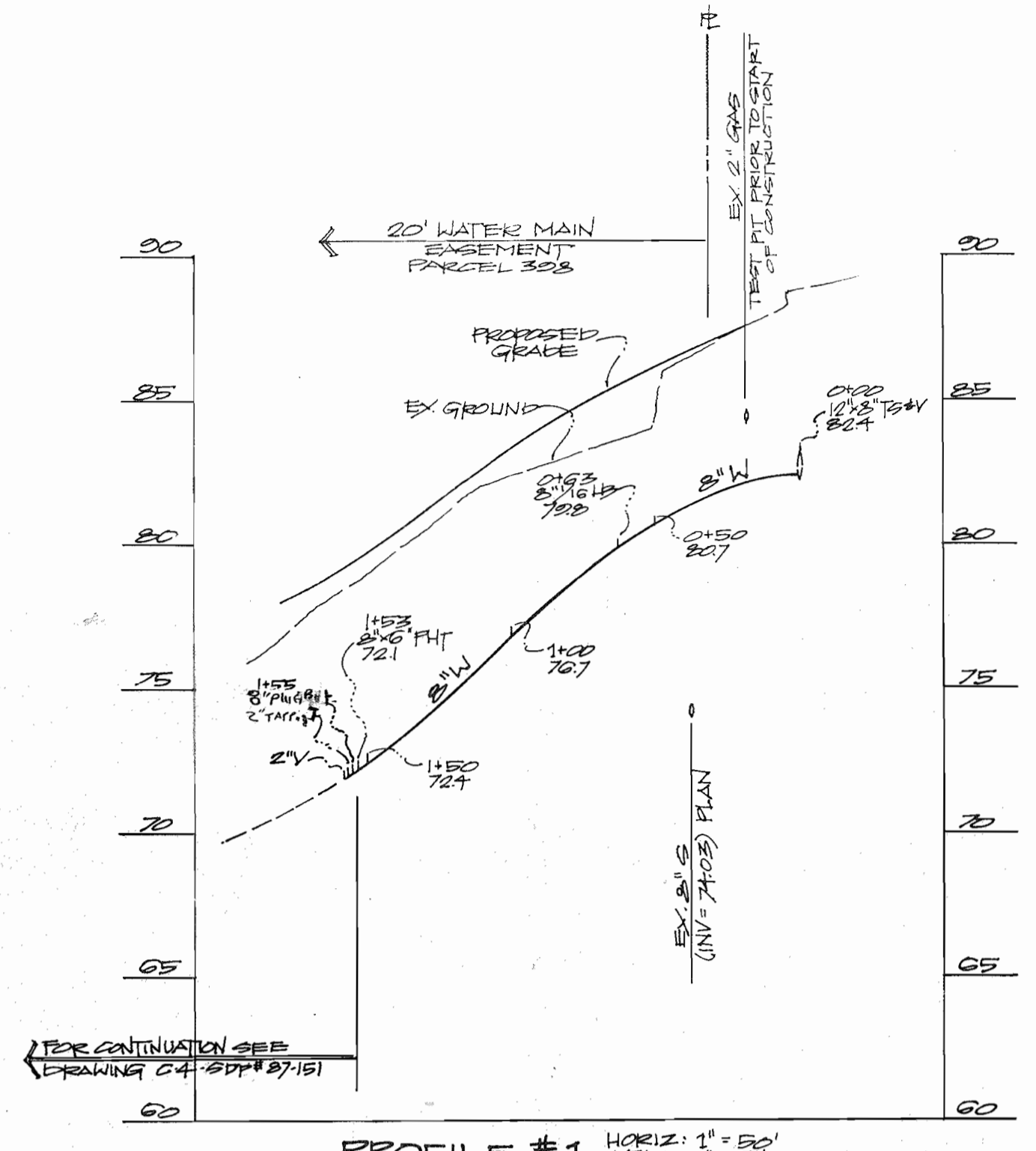


WATER CODE: 901
 LAND USE: B-1 ZONE COMMERCIAL RETAIL
 DRAINAGE BASIN PATUXENT
 NUMBER OF WHC'S: 1 NUMBER OF SHC'S: 1

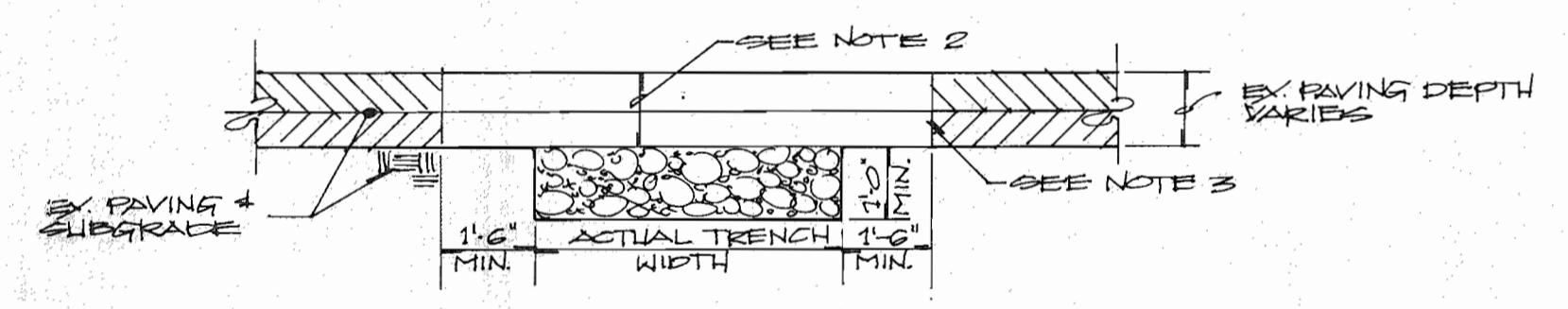
THE EXISTING UNDERGROUND UTILITIES SHOWN HEREON ARE BASED ON INFORMATION AVAILABLE FROM SURVEYS AND RECORDS. THE CONTRACTOR SHALL BE RESPONSIBLE FOR DETERMINING THE EXACT LOCATION OF ALL UTILITIES BEFORE COMMENCING WORK AND FOR ANY DAMAGES WHICH MIGHT OCCUR BY HIS FAILURE TO LOCATE OR PRESERVE THESE UNDERGROUND UTILITIES. IF DURING CONSTRUCTION OPERATION, THE CONTRACTOR SHOULD ENCOUNTER UTILITIES OTHER THAN THOSE SHOWN ON THE PLANS, HE SHALL IMMEDIATELY NOTIFY THE ENGINEER AND TAKE ALL NECESSARY AND PROPER STEPS TO PROTECT THE FACILITY AND ASSURE THE CONTINUANCE OF SERVICE.

BILL OF MATERIALS		
ITEM	QUANTITY	
8" WATER	155 L.F.	145 L.F.
6" WATER	12 L.F.	9.5 L.F.
FIRE HYDRANT	1	1 EA.
12" 2" T ₂ V	1	1 EA.
8" 6" T	1	1 EA.
6" V	1	1 EA.
2" TAPPED TEE	1	1 EA.
2" WGLB	1	1 EA.
2" RUG ADDRESS	1	1 EA.
2" V	1	1 EA.
2" TYPE "K" COPPER	9 L.F.	9 L.F.

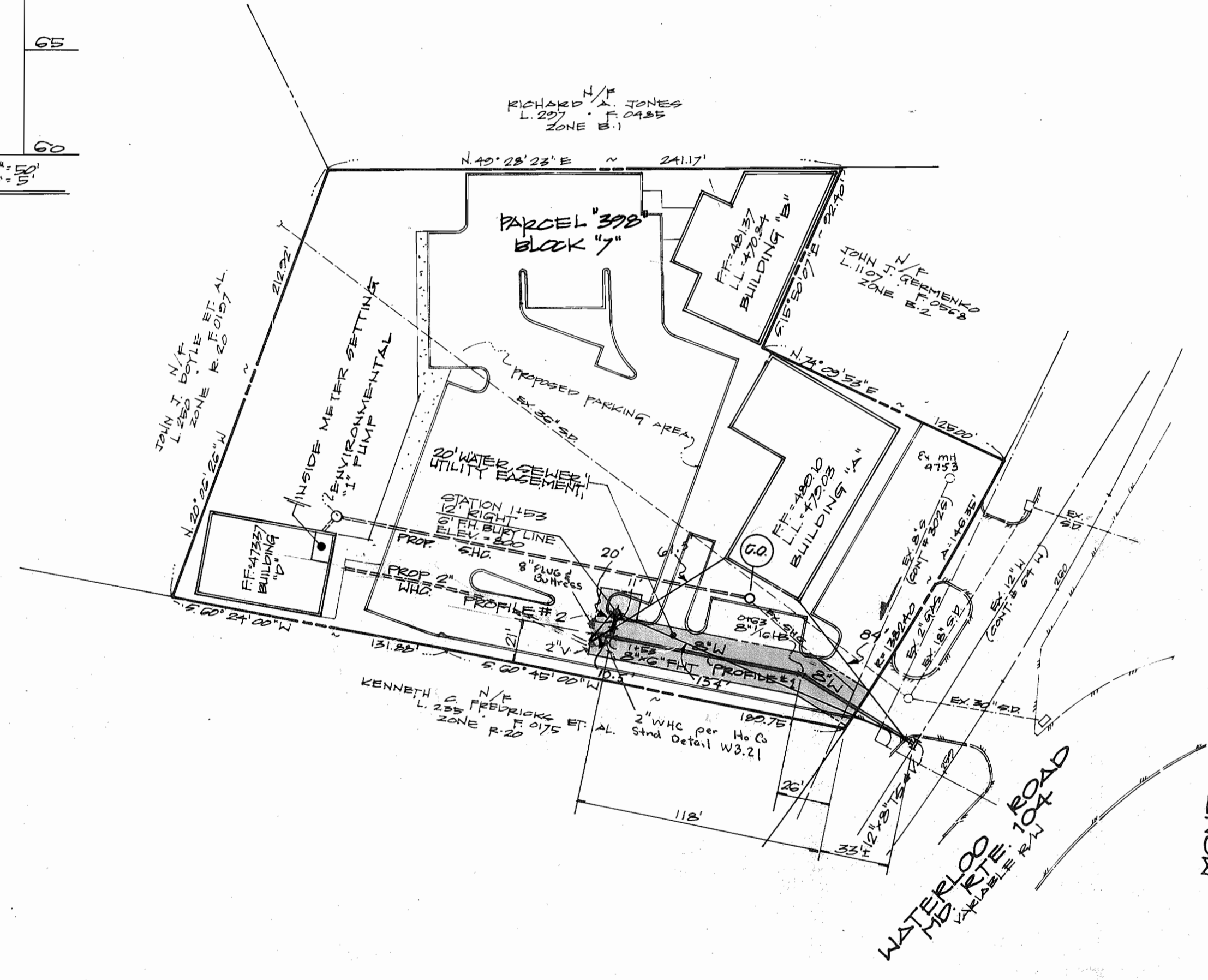


REVISION MADE 3-21-88 - EXTENSION OF 2" WGLB OFF OF 8" WATER FOR FIRE HYDRANT. AS PER REVIEW.

PAVEMENT PATCHING DETAIL
 NO SCALE (AS REQUIRED)



- CLEAN & WET EDGES OF CUT BEFORE PLACING CONCRETE.
- PAVEMENT PATCH MATERIALS AND COURSE THICKNESS SHALL BE EQUAL TO EX. PAVING SECTION OR AS APPROVED BY PRW. THE MINIMUM PAVING PATCH SHALL CONSIST OF 3" BITUMINOUS CONC. SURFACE MATERIAL PLACED IN TWO 1/2" COURSES. BITUMINOUS CONC. BASE MATERIAL, WHEN PLACED, SHALL NOT EXCEED 5" THICKNESS PER COURSE. STONE BASE MATERIAL SHALL NOT EXCEED 5" THICKNESS PER COURSE.
- PLACE HOT LIQUID ASPHALT (MR "K" OR AS APPROVED BY PRW) ALONG VERTICAL FACE OF EX. PAVING PRIOR TO PLACING NEW MATERIAL TO INSURE CONTINUOUS BOND. UPON COMPLETION OF PAVING PATCH, THE HOT LIQUID ASPHALT SHALL BE BRUSHED INTO THE JOINT. BETWEEN OLD AND NEW PAVING SURFACES TO PREVENT EXCESS LIQUID ASPHALT FROM BEING TRACKED BY TRAFFIC.



- GENERAL NOTES**
- APPROXIMATE LOCATION OF EXISTING MAIN ARE SHOWN. THE CONTRACTOR SHALL TAKE ALL NECESSARY PRECAUTIONS TO PROTECT EX. MAINS AND SERVICES, AND MAINTAIN UNINTERRUPTED SUPPLY. ANY DAMAGE INCURRED SHALL BE REPAIRED IMMEDIATELY.
 - ALL PIPE ELEVATIONS SHOWN ARE INVERT (I) ELEVATIONS.
 - THE CONTRACTOR SHALL LOCATE EX. UTILITIES A MINIMUM OF TWO WEEKS IN ADVANCE OF CONSTRUCTION OPERATIONS IN VICINITY OF UTILITIES.
 - FOR ALL STANDARD DETAILS SEE STANDARDS BOUND IN SPECIFICATIONS.
 - ALL WATER MAINS SHALL HAVE A MINIMUM OF 3.5' COVER.
 - BLOCK ALL FITTINGS WITH CONCRETE, SEE STANDARDS BOUND IN SPECIFICATIONS.
 - BURY LINE ELEVATIONS ON FIRE HYDRANTS SHALL BE SET TO THE ELEVATIONS SHOWN ON THE DRAWINGS OR AS DIRECTED BY THE ENGINEER IN THE FIELD.
 - ALL FIRE HYDRANTS SHALL BE STRAPPED AND BUTTRESSED IN ACCORDANCE WITH STANDARD DETAILS.
 - COST OF STRAPPING FIRE HYDRANTS AND VALVES TO TEES TO BE INCLUDED IN PRICE BID FOR FURNISHING AND INSTALLING FIRE HYDRANTS.
 - CLEAR ALL UTILITIES BY A MINIMUM OF 6", CLEAR ALL POLES BY A MINIMUM OF 2'-0" OR TUNNEL AS REQUIRED.
 - ALL HORIZONTAL AND VERTICAL ARE IN HOWARD COUNTY DATUM, AS EXTENDED FROM WGS84.
 - TIME OF CONNECTION TO EXISTING 8" WATER TO BE AS DIRECTED BY HOWARD COUNTY DEPARTMENT OF PUBLIC WORKS. IT MAY BE ANY TIME, ON ANY DAY OR NIGHT. CALL THE BUREAU OF UTILITIES AT (301) 992-2366.
 - SEDIMENT CONTROL MEASURES FOR THIS CONTRACT WILL BE IMPLEMENTED IN ACCORDANCE WITH SECTION 210 OF THE STANDARD SPECIFICATIONS AND SDP 87.151.
 - SERVICE CLAMPS ARE TO HAVE STAINLESS STEEL STRAPS.
 - ALL RIP FITTINGS SHALL BE IN ACCORDANCE WITH ANKA SPECIFICATIONS C-153 DUCTILE IRON COMPACT FITTINGS, 3-INCH THROUGH 12 INCH FOR WATER & OTHER LIQUIDS.
 - ALL WATER MAINS TO BE RIP CLASS 62 UNLESS OTHERWISE NOTED.

DEVELOPER'S CERTIFICATE
 I HEREBY CERTIFY THAT ALL DEVELOPMENT AND/OR CONSTRUCTION WILL BE DONE ACCORDING TO THIS PLAN FOR DEVELOPMENT, EROSION, AND SEDIMENT CONTROL. I AUTHORIZE PERIODIC ON-SITE INSPECTION BY THE HOWARD SOIL CONSERVATION DISTRICT, OR THEIR AUTHORIZED AGENT, AS ARE DEEMED NECESSARY. DEVIATION FROM THIS PLAN WILL NOT BE MADE UNLESS AUTHORIZED BY THE HOWARD SOIL CONSERVATION DISTRICT.
 Vincent Pappi 3.23.88
 DATE

ENGINEER'S CERTIFICATE
 I HEREBY CERTIFY THAT THIS PLAN FOR SOIL EROSION AND SEDIMENT CONTROL REPRESENTS A PRACTICAL AND WORKABLE PLAN BASED ON MY PERSONAL KNOWLEDGE OF THE SITE CONDITIONS. IT WAS PREPARED IN ACCORDANCE WITH THE REQUIREMENTS OF THE HOWARD SOIL CONSERVATION DISTRICT.
 William A. Park, PE 9/28/87
 DATE

GDP. 87-151 TAX MAP #31, L.1524 • F. 605

REVIEWED FOR HOWARD COD AND MEETS TECHNICAL REQUIREMENTS
 James M. Avelin 4-8-88
 DATE

US SOIL CONSERVATION SERVICE
 THIS DEVELOPMENT IS APPROVED SOIL EROSION AND SEDIMENT CONTROL BY THE HOWARD SOIL CONSERVATION DISTRICT
 Stephen L. Fleck 4/8/88
 DATE

HOWARD SOIL CONSERVATION DISTRICT

DEPARTMENT OF PUBLIC WORKS
 HOWARD COUNTY, MARYLAND
 Director of Public Works DATE
 Chief Bureau of Engineering DATE
 Chief Land Development Division DATE

JOYCE ENGINEERING CORPORATION
 Professional Engineering • Land Planning • Surveying
 10766 BALTIMORE AVENUE
 BELTSVILLE, MARYLAND 20705 (301) 525-4333

CONTRACT No 44-1775-D
 BLOCK "7" PARCEL 302B
 KNOLLVIEW LIMITED PARTNERSHIP PROPERTY
 TAX MAP #31
 HOWARD COUNTY, MARYLAND

OWNER/DEVELOPER:
 R.F. OBRECHT AND ASSOCIATES
 2475 PEBBLE ROAD
 TIMONIUM, MARYLAND 21083
 PHONE: (301) 561-8388

WATER EXTENSION PLAN
 ELECTION DISTRICT
 ELLICOTT No 2

DRAWING No 1
 1 of 1
 SCALE AS SHOWN
 DESIGN DATE
 DRAFT DATE
 T.A.M.