

**GENERAL NOTES**

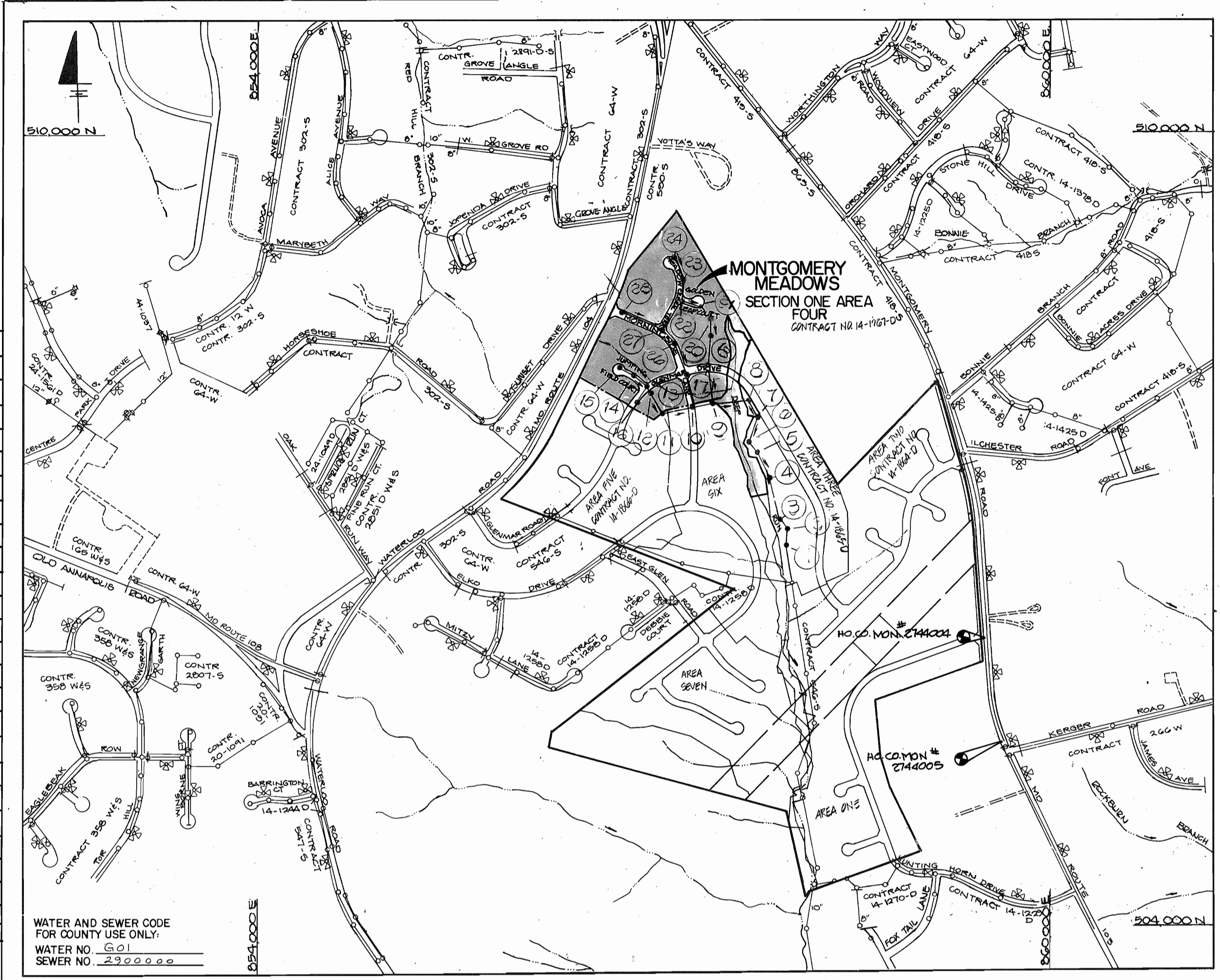
- APPROXIMATE LOCATION OF EXISTING MAINS ARE SHOWN. THE CONTRACTOR SHALL TAKE ALL NECESSARY PRECAUTIONS TO PROTECT EXISTING MAINS AND SERVICES AND MAINTAIN UNINTERRUPTED SUPPLY. ANY DAMAGE INCURRED SHALL BE REPAIRED IMMEDIATELY TO THE SATISFACTION OF THE ENGINEER, AT THE CONTRACTOR'S EXPENSE.
- ALL HORIZONTAL CONTROLS ARE BASED ON MARYLAND STATE COORDINATES.
- ALL VERTICAL CONTROLS ARE BASED ON U.S.G.S. DATUM.
- ALL PIPE ELEVATIONS SHOWN ARE INVERT ELEVATIONS.
- CLEAR ALL UTILITIES BY A MINIMUM OF 6". CLEAR ALL POLES BY 2'-0" MINIMUM OR TUNNEL AS REQUIRED. ANY COST INCURRED TO THE CONTRACTOR FOR TUNNELING OR BRACING AT POLES SHALL BE INCLUDED IN UNIT PRICES BID FOR CONSTRUCTION OF THE MAIN.
- FOR DETAILS NOT SHOWN ON THE DRAWINGS USE HOWARD COUNTY STANDARD DETAILS.
- FOR MATERIALS AND CONSTRUCTION METHODS USE HOWARD COUNTY STANDARD SPECIFICATIONS.
- CONTRACTOR SHALL LOCATE EXISTING UTILITIES A MINIMUM OF TWO (2) WEEKS IN ADVANCE OF CONSTRUCTION OPERATIONS IN THE VICINITY OF PROPOSED UTILITIES AT HIS OWN EXPENSE.
- CONTRACTOR SHALL NOTIFY THE FOLLOWING UTILITIES OR AGENCIES AT LEAST FIVE (5) WORKING DAYS BEFORE STARTING WORK SHOWN ON THESE PLANS.
  - STATE HIGHWAY ADMINISTRATION 531-5533
  - BALTIMORE GAS AND ELECTRIC COMPANY - UNDERGROUND ELECTRIC DISTRIBUTION CUSTOMER SERVICE 685-0123
  - BALTIMORE GAS AND ELECTRIC COMPANY - UNDERGROUND GAS DISTRIBUTION CUSTOMER SERVICE 685-0123
  - ENGINEERING - "DAMAGE CONTROL" 234-5611
  - "MISS UTILITY" 1-559-0100
  - CHESAPEAKE & POTOMAC (C&P) TELEPHONE COMPANY 725-9976
  - AMERICAN TELEPHONE AND TELEGRAPH - CABLE LOCATION DIVISION 393-3533
  - COLONIAL PIPELINE COMPANY 795-1390
  - BUREAU OF UTILITIES HOWARD COUNTY 992-2366
- TREES ARE TO BE PROTECTED FROM DAMAGE TO MAXIMUM EXTENT. TREES LOCATED WITHIN THE CONSTRUCTION STRIP ARE NOT TO BE REMOVED OR DAMAGED BY THE CONTRACTOR.
- CONTRACTOR SHALL REMOVE TREES, STUMPS, AND ROOTS ALONG LINE OF EXCAVATION AS DIRECTED BY THE ENGINEER. PAYMENT FOR SUCH REMOVAL SHALL BE INCLUDED IN THE UNIT PRICE BID FOR CONSTRUCTION OF THE MAIN.
- PLACE REGULATION "MEN WORKING" AND WARNING SIGNS AS REQUIRED TO COMPLY WITH MARYLAND STATE HIGHWAY ADMINISTRATION MANUAL OF TRAFFIC CONTROL FOR HIGHWAY CONSTRUCTION AND MAINTENANCE.
- ALL WATER MAINS TO BE D.I.P. CLASS 52 ONLY.
- TOP OF ALL WATER MAINS TO HAVE A MINIMUM OF 3-1/2' COVER UNLESS OTHERWISE NOTED.
- VALVES ADJACENT TO TEES SHALL BE STRAPPED TO TEES.
- BLOCK ALL FITTINGS WITH CONCRETE.
- BURYLINE ELEVATIONS ON ALL FIRE HYDRANTS SHALL BE SET TO THE ELEVATIONS SHOWN ON THE DRAWINGS. ALL FIRE HYDRANTS SHALL BE STRAPPED AND BUTTRESSED WITH CONCRETE IN ACCORDANCE WITH STANDARD DETAILS. SOIL AROUND THE FIRE HYDRANT TO BE COMPACTED IN ACCORDANCE WITH SECTIONS 10.05 OF THE STANDARD SPECIFICATIONS.
- ALL WATER HOUSE CONNECTIONS SHALL BE FOR INSIDE METER SETTING UNLESS OTHERWISE SHOWN.
- THE CONTRACTOR SHALL NOT OPERATE ANY WATER MAIN VALVES ON THE EXISTING SYSTEM.
- ALL SEWER MAINS SHALL BE C.S.P.X., R.C.S.P., V.C.P.X., A.C.P. CLASS 2400 OR PVC UNLESS OTHERWISE NOTED.
- THE CONTRACTOR SHALL PROVIDE A JOINT IN ALL SEWER MAINS WITHIN 2'-0" OF EXTERIOR MANHOLE WALL.
- ALL MANHOLES SHALL BE 4'-0" INSIDE DIAMETER, UNLESS OTHERWISE NOTED.
- FORCE MAINS SHALL BE D.I.P. ONLY.
- MANHOLES DESIGNATED W.T. IN PLAN AND PROFILE SHALL HAVE WATERTIGHT FRAME AND COVERS, STANDARD DETAIL G.5.52. WHERE WATERTIGHT MANHOLE FRAME AND COVER IS USED, SET TOP OF FRAME 1'-6" ABOVE FINISHED GRADE, STANDARD DETAIL G.5.41
- HOUSE (S) WITH THE SYMBOL "C.N.S." INDICATES THAT CELLAR CAN NOT BE SERVED.
- ALL D.I.P. FITTINGS SHALL BE IN ACCORDANCE WITH A.W.W.A. SPECIFICATION C-153 DUCTILE IRON COMPACT FITTINGS, 3-INCH THROUGH 12 INCH WATER AND OTHER LIQUIDS.
- ALL S.H.C.s ARE AT 2% SLOPE.
- ALL CONSTRUCTION TO BE DONE AS PER THIS PLAN AND HOWARD COUNTY DESIGN MANUAL VOL. IV.

QUANTITIES				
ITEM	EST'D	AS BUILT	SUPPLIER	
MANHOLES	28	28 EA.	ATLANTIC CONC. PROD.	ATLANTIC CONC. PROD.
8" SEWER	4220 L.F.	4137 L.F.	BELAIR Rd. SUP.	AMERICAN PIPE
6" SHC	L.F.	1589 L.F.	"	"
6" WATER	2685 L.F.	2481 L.F.	ATL WATER & SEWER SUPPLY INC.	ATLANTIC STATES
6" WATER	482 L.F.	477 L.F.	"	"
E.H.W. VALVE	7 EA.	7 EA.	BELAIR Rd. SUP.	Mueller Co.
1" WHC	637 L.F.	564 L.F.	"	HOWELL METAL
3/4" WHC	1069 L.F.	891 L.F.	"	"
6" VALVES	9 EA.	7 EA.	"	Mueller Co.
12" 8" TS & 8" V	1 EA.	1 EA.	"	"
8" 6" FHT	7	7 EA.	"	Griffin Pipe.
8" 8" CROSS	1	1 EA.	"	"
8" 8" T	3	1 EA.	"	"
8" 6" REDUCER	3	2 EA.	"	"
8" CAPS	3	3 EA.	"	"
6" CAPS	3	1 EA.	"	"
8" D.I. SEWER	427 L.F.			
3" BLOWOFF	2	2 EA.	BELAIR Rd. SUP.	
METER VAULTS	3	3 EA.	"	"
4" VALVES	2	2 EA.	"	Mueller Co.
8" 4" REDUCER	1	1 EA.	"	Griffin Pipe
4" 3" REDUCER	1	2 EA.	"	"
1 1/2" DRAIN	1	1 EA.	"	Howell Metal
6" 4" REDUCER		4 EA.	"	Griffin Pipe
4" SHC		1384 L.F.	"	AMERICAN PIPE

**BENCH MARKS**  
 Note: USED 45° BEND @ Lot # 243

HOWARD CO. NO. 2744604 ELEV. 415.967  
 3/4" BEAR 0.6' BELOW SURFACE, 7'± (W) OF ROUTE 103 & 1400'± (S) OF INTER. WITH ILLCHESTER ROAD.

HOWARD CO. NO. 277005 ELEV. 419.025  
 3/4" BEAR 0.6' BELOW SURFACE, 10'± (W) EDGE OF ROUTE 103 & 80'± (N) OF E OF KERGER ROAD.



WATER AND SEWER CODE FOR COUNTY USE ONLY:  
 WATER NO. 6.01  
 SEWER NO. 2.300.000

TYPE OF BUILDING: SINGLE FAMILY - RESIDENTIAL  
 NUMBER OF LOTS: 50  
 NO. OF WATER HOUSE CONNECTIONS: 50  
 NO. OF SEWER HOUSE CONNECTIONS: 50  
 DRAINAGE AREA: DEEP RUN CREEK, PATAPSCO RIVER

**LOCATION MAP**  
 SCALE: 1" = 600'

# CONTRACT NO. 14-1767-D

# MONTGOMERY MEADOWS

## SECTION ONE AREA FOUR

## WATER AND SEWER MAIN EXTENSIONS

## HOWARD COUNTY, MARYLAND

## DEPARTMENT OF PUBLIC WORKS

SEDIMENT CONTROL MEASURES FOR THIS CONTRACT WILL BE IMPLEMENTED IN ACCORDANCE WITH ARTICLE 15 OF THE HOWARD COUNTY DESIGN MANUAL AND STANDARDS AND SPECIFICATIONS FOR SOIL EROSION AND SEDIMENT CONTROL IN DEVELOPING AREAS AND ALSO AS SHOWN ON THE GRADING AND SEDIMENT CONTROL PLAN FOR P. 88-170

THIS DEVELOPMENT PLAN IS APPROVED FOR EROSION AND SEDIMENT CONTROL BY HOWARD COUNTY SOIL CONSERVATION DISTRICT

REVIEW FOR HOWARD COUNTY SOIL CONSERVATION DISTRICT AND MEETS TECHNICAL REQUIREMENTS  
 [Signature] 3/29/89  
 S. SOIL CONSERVATION SERVICE DATE

APPROVED:  
 [Signature] 3/29/89  
 HOWARD SOIL CONSERVATION DISTRICT DATE

CONTRACT NO. 14-1767-D  
 MONTGOMERY MEADOWS  
 SECTION ONE AREA FOUR  
 WATER & SEWER MAIN EXTENSIONS

**DEPARTMENT OF PUBLIC WORKS**  
 HOWARD COUNTY, MARYLAND

Director of Public Works: [Signature] 3/31/89  
 Chief, Bureau of Engineering: [Signature] 3-31-89  
 Chief, Bureau of Utilities: [Signature] 3-20-89  
 Chief, Land Development Division: [Signature] 3/30/89

**DEWBERRY & DAVIS**  
 ARCHITECTS-ENGINEERS-PLANNERS-SURVEYORS  
 3300 N. RIDGE ROAD  
 SUITE 100  
 ELLICOTT CITY, MD. 21043  
 (301) 461-7478



DES: K.A. FRITZ				
DRN: K.A. FRITZ				
CHK: DDBLTON	WAO	REV. AS PER HOWARD CO COMMENTS JAN 26, 1990	2-21-90	
	WFO	REVISED PER COMMENTS DATED SEPT. 5, 1989	9/25/89	
	KMG	REVISED PER COMMENTS DATED DECEMBER 5, 1988	1/29/89	
DATE: FEB. 2, 1989	BY NO.	REVISION	DATE	

**TITLE SHEET**

600' SCALE MAP NO. 281 BLOCK NO. 14

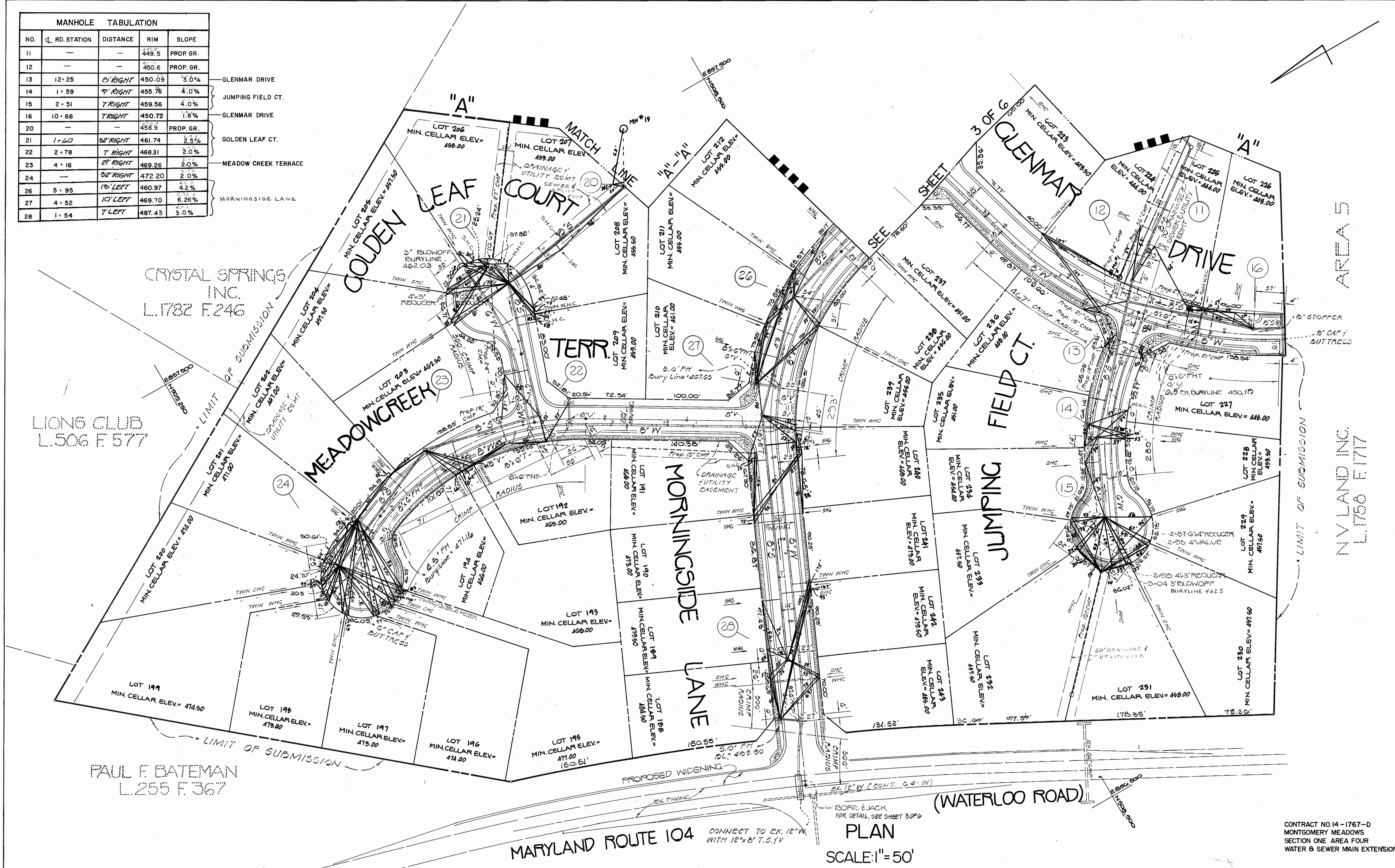
**MONTGOMERY MEADOWS**  
 SECTION ONE AREA FOUR  
 CONTRACT NO. 14-1767-D  
 1st ELECTION DISTRICT  
 HOWARD COUNTY, MARYLAND

SCALE AS SHOWN  
 SHEET 1 OF 6

AS-BUILT 3-13-91

W60092C

MANHOLE TABULATION				
NO.	RD. STATION	DISTANCE	RIM	SLOPE
11	—	—	449.5	PROP. GR.
12	—	—	450.6	PROP. GR.
13	12+25	6' RIGHT	450.09	3.0%
14	1+59	7' RIGHT	455.76	4.0%
15	2+51	7' RIGHT	459.56	4.0%
16	10+66	7' RIGHT	450.72	1.8%
20	—	—	456.9	PROP. GR.
21	1+60	22' RIGHT	461.74	2.5%
22	2+78	7' RIGHT	468.31	2.0%
23	4+16	21' RIGHT	469.26	2.0%
24	—	22' RIGHT	472.20	2.0%
26	5+95	10' LEFT	460.97	4.2%
27	4+52	10' LEFT	469.70	6.26%
28	1+54	7' LEFT	487.43	3.0%



LIONS CLUB  
L.506 F.577

CRYSTAL SPRINGS  
INC.  
L.1782 F.246

PAUL F. BATEMAN  
L.255 F.367

MARYLAND ROUTE 104  
CONNECT TO EX. 12" W.  
WITH 12" X 8" T.S. 1 V

(WATERLOO ROAD)

PLAN  
SCALE: 1" = 50'

CONTRACT NO. 14-1767-D  
MONTGOMERY MEADOWS  
SECTION ONE AREA FOUR  
WATER & SEWER MAIN EXTENSIONS

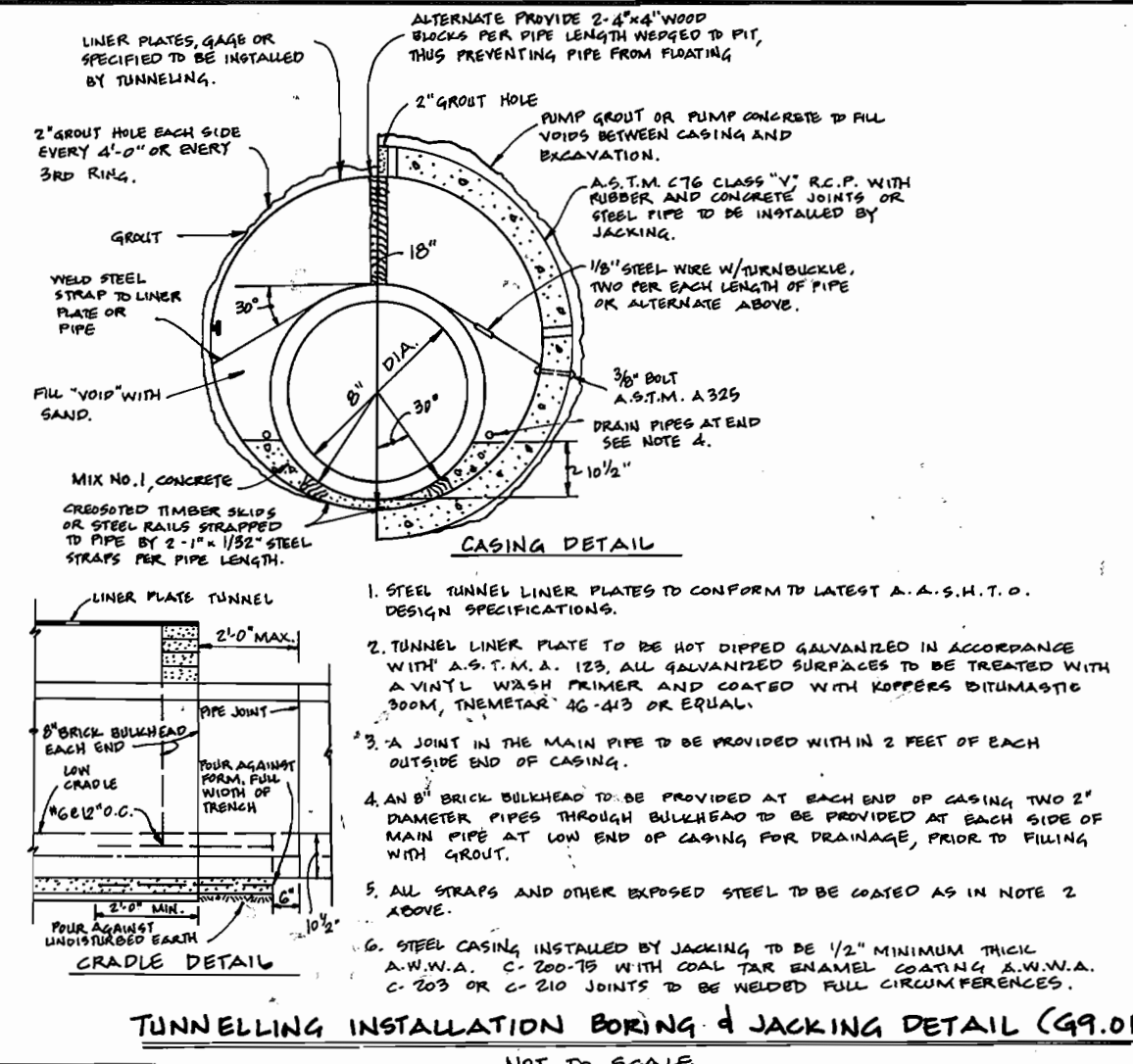
DEPARTMENT OF PUBLIC WORKS HOWARD COUNTY, MARYLAND Director of Public Works: <i>James H. Brown</i> 3/31/89 Chief, Bureau of Utilities: <i>Paul F. Bateman</i> 3-20-89	DEWBERRY AND DAVIS ARCHITECTS ENGINEERS PLANNERS SURVEYORS 3300 N. RIDGE ROAD SUITE 100 ELLICOTT CITY, MARYLAND 21043 PHONE: (301) 461-7478		DES: WLB				PLAN WATER & SEWER MAIN 600' SCALE MAP NO. 31 BLOCK NO. 14	MONTGOMERY MEADOWS SECTION ONE AREA FOUR CONTRACT NO. 14-1767-D 1ST ELECTION DISTRICT HOWARD COUNTY, MARYLAND	SCALE AS SHOWN
			DRN: WLB, WEO	CHK: W, L, B	DATE: JULY 1989	BY: NO.			REVISION

AS-BUILT 3-13-91

W5003EC

MANHOLE TABULATION				
NO.	RD. STATION	DISTANCE	RIM	SLOPE
1	—	—	420.3	EX. GR. 1.6
2	—	—	421.4	
3	—	—	422.1	
4	—	—	428.4	
5	—	—	430.0	
6	—	—	431.9	
7	—	—	435.9	
8	—	—	439.9	EX. GR. 1.6
9	—	—	440.0	PROP. GR.
10	10+85	10' LEFT	445.55	2.5%
17	17+67	11' RIGHT	447.07	2.9%
18	—	—	459.0	PROP. GR.
19	—	—	458.2	PROP. GR.
25	8+39	12' LEFT	454.45	4.0%

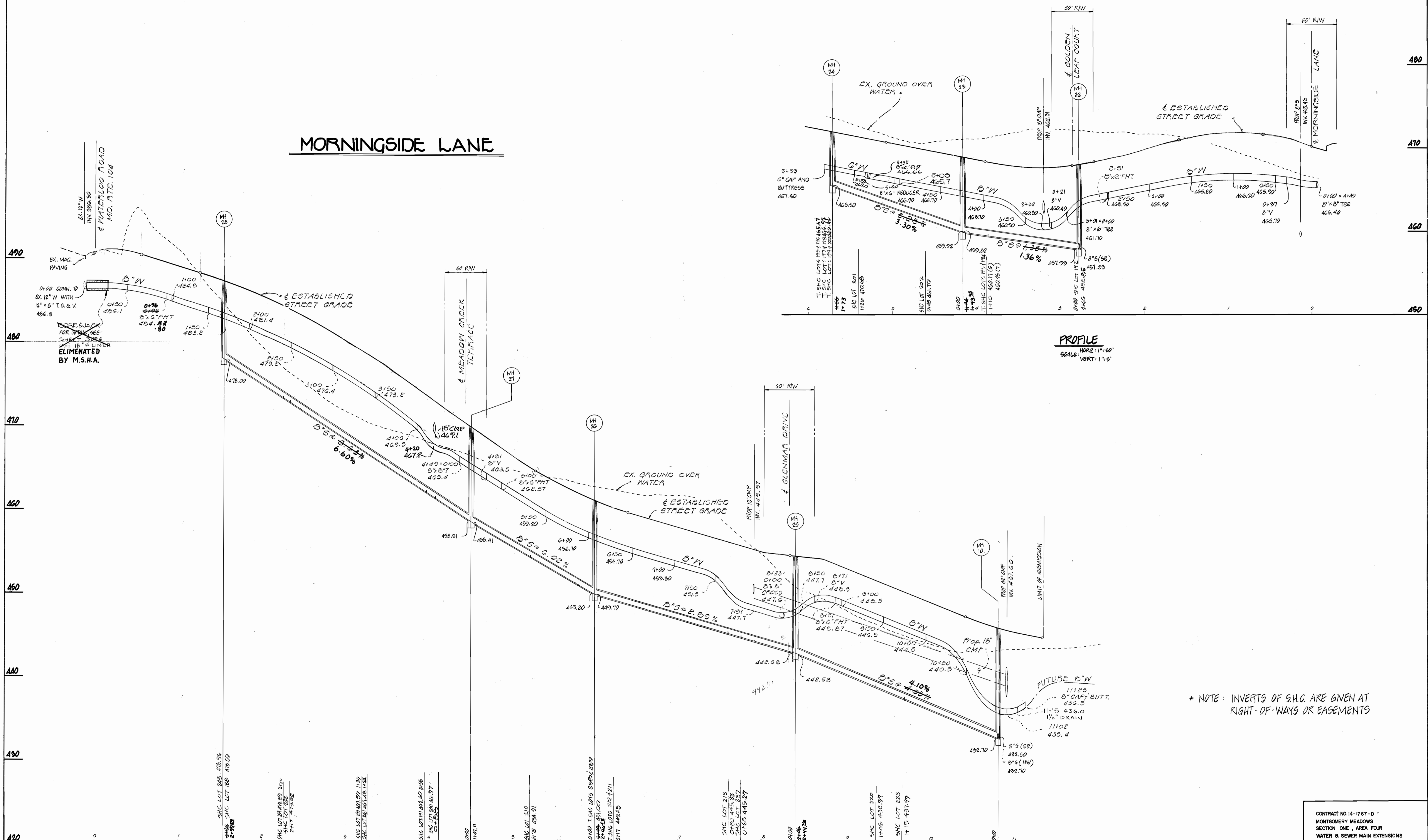
OUTFALL  
MORNINGSIDE LANE  
GLENMAR DRIVE  
MORNINGSIDE LANE



INVERT OF SEWER CONNECTIONS AT PROPERTY LINE											
STATION	LOT NO.	INVERT	STATION	LOT NO.	INVERT	STATION	LOT NO.	INVERT	STATION	LOT NO.	INVERT
MH 9 TO MH 10	LOT 10	431.13	MH 20 TO MH 21	LOT 20	448.97	MH 10 TO MH 15	LOT 223	438.16	MH 10 TO MH 25	LOT 220	439.13
MH 10 TO MH 11	LOT 11	434.81	MH 21 TO MH 22	LOT 21	451.46	MH 15 TO MH 20	LOT 221	440.88	MH 15 TO MH 20	LOT 221	440.88
MH 11 TO MH 12	LOT 12	438.55	MH 22 TO MH 23	LOT 22	453.98	MH 20 TO MH 25	LOT 222	445.47	MH 15 TO MH 20	LOT 221	440.88
MH 12 TO MH 13	LOT 13	438.71	MH 23 TO MH 24	LOT 23	455.35	MH 25 TO MH 26	LOT 223	445.47	MH 15 TO MH 20	LOT 221	440.88
MH 13 TO MH 14	LOT 14	442.24	MH 24 TO MH 25	LOT 24	456.11	MH 26 TO MH 27	LOT 224	445.47	MH 15 TO MH 20	LOT 221	440.88
MH 14 TO MH 15	LOT 15	442.82	MH 25 TO MH 26	LOT 25	460.34	MH 27 TO MH 28	LOT 225	445.47	MH 15 TO MH 20	LOT 221	440.88
MH 15 TO MH 16	LOT 16	445.01	MH 26 TO MH 27	LOT 26	464.26	MH 28 TO MH 29	LOT 226	445.47	MH 15 TO MH 20	LOT 221	440.88
MH 16 TO MH 17	LOT 17	447.88	MH 27 TO MH 28	LOT 27	466.42	MH 29 TO MH 30	LOT 227	445.47	MH 15 TO MH 20	LOT 221	440.88
MH 17 TO MH 18	LOT 18	451.17	MH 28 TO MH 29	LOT 28	466.42	MH 30 TO MH 31	LOT 228	445.47	MH 15 TO MH 20	LOT 221	440.88
MH 18 TO MH 19	LOT 19	451.43	MH 29 TO MH 30	LOT 29	466.90	MH 31 TO MH 32	LOT 229	445.47	MH 15 TO MH 20	LOT 221	440.88
MH 19 TO MH 20	LOT 20	451.43	MH 30 TO MH 31	LOT 30	467.36	MH 32 TO MH 33	LOT 230	445.47	MH 15 TO MH 20	LOT 221	440.88
MH 20 TO MH 21	LOT 21	451.25	MH 31 TO MH 32	LOT 31	467.36	MH 33 TO MH 34	LOT 231	445.47	MH 15 TO MH 20	LOT 221	440.88
MH 21 TO MH 22	LOT 22	451.25	MH 32 TO MH 33	LOT 32	467.36	MH 34 TO MH 35	LOT 232	445.47	MH 15 TO MH 20	LOT 221	440.88
MH 22 TO MH 23	LOT 23	441.08	MH 33 TO MH 34	LOT 33	467.36	MH 35 TO MH 36	LOT 233	445.47	MH 15 TO MH 20	LOT 221	440.88
MH 23 TO MH 24	LOT 24	441.08	MH 34 TO MH 35	LOT 34	467.36	MH 36 TO MH 37	LOT 234	445.47	MH 15 TO MH 20	LOT 221	440.88
MH 24 TO MH 25	LOT 25	441.08	MH 35 TO MH 36	LOT 35	467.36	MH 37 TO MH 38	LOT 235	445.47	MH 15 TO MH 20	LOT 221	440.88
MH 25 TO MH 26	LOT 26	441.08	MH 36 TO MH 37	LOT 36	467.36	MH 38 TO MH 39	LOT 236	445.47	MH 15 TO MH 20	LOT 221	440.88
MH 26 TO MH 27	LOT 27	441.08	MH 37 TO MH 38	LOT 37	467.36	MH 39 TO MH 40	LOT 237	445.47	MH 15 TO MH 20	LOT 221	440.88
MH 27 TO MH 28	LOT 28	441.08	MH 38 TO MH 39	LOT 38	467.36	MH 40 TO MH 41	LOT 238	445.47	MH 15 TO MH 20	LOT 221	440.88
MH 28 TO MH 29	LOT 29	441.08	MH 39 TO MH 40	LOT 39	467.36	MH 41 TO MH 42	LOT 239	445.47	MH 15 TO MH 20	LOT 221	440.88
MH 29 TO MH 30	LOT 30	441.08	MH 40 TO MH 41	LOT 40	467.36	MH 42 TO MH 43	LOT 240	445.47	MH 15 TO MH 20	LOT 221	440.88
MH 30 TO MH 31	LOT 31	441.08	MH 41 TO MH 42	LOT 41	467.36	MH 43 TO MH 44	LOT 241	445.47	MH 15 TO MH 20	LOT 221	440.88
MH 31 TO MH 32	LOT 32	441.08	MH 42 TO MH 43	LOT 42	467.36	MH 44 TO MH 45	LOT 242	445.47	MH 15 TO MH 20	LOT 221	440.88
MH 32 TO MH 33	LOT 33	441.08	MH 43 TO MH 44	LOT 43	467.36	MH 45 TO MH 46	LOT 243	445.47	MH 15 TO MH 20	LOT 221	440.88
MH 33 TO MH 34	LOT 34	441.08	MH 44 TO MH 45	LOT 44	467.36	MH 46 TO MH 47	LOT 244	445.47	MH 15 TO MH 20	LOT 221	440.88
MH 34 TO MH 35	LOT 35	441.08	MH 45 TO MH 46	LOT 45	467.36	MH 47 TO MH 48	LOT 245	445.47	MH 15 TO MH 20	LOT 221	440.88
MH 35 TO MH 36	LOT 36	441.08	MH 46 TO MH 47	LOT 46	467.36	MH 48 TO MH 49	LOT 246	445.47	MH 15 TO MH 20	LOT 221	440.88
MH 36 TO MH 37	LOT 37	441.08	MH 47 TO MH 48	LOT 47	467.36	MH 49 TO MH 50	LOT 247	445.47	MH 15 TO MH 20	LOT 221	440.88
MH 37 TO MH 38	LOT 38	441.08	MH 48 TO MH 49	LOT 48	467.36	MH 50 TO MH 51	LOT 248	445.47	MH 15 TO MH 20	LOT 221	440.88
MH 38 TO MH 39	LOT 39	441.08	MH 49 TO MH 50	LOT 49	467.36	MH 51 TO MH 52	LOT 249	445.47	MH 15 TO MH 20	LOT 221	440.88
MH 39 TO MH 40	LOT 40	441.08	MH 50 TO MH 51	LOT 50	467.36	MH 52 TO MH 53	LOT 250	445.47	MH 15 TO MH 20	LOT 221	440.88
MH 40 TO MH 41	LOT 41	441.08	MH 51 TO MH 52	LOT 51	467.36	MH 53 TO MH 54	LOT 251	445.47	MH 15 TO MH 20	LOT 221	440.88
MH 41 TO MH 42	LOT 42	441.08	MH 52 TO MH 53	LOT 52	467.36	MH 54 TO MH 55	LOT 252	445.47	MH 15 TO MH 20	LOT 221	440.88
MH 42 TO MH 43	LOT 43	441.08	MH 53 TO MH 54	LOT 53	467.36	MH 55 TO MH 56	LOT 253	445.47	MH 15 TO MH 20	LOT 221	440.88
MH 43 TO MH 44	LOT 44	441.08	MH 54 TO MH 55	LOT 54	467.36	MH 56 TO MH 57	LOT 254	445.47	MH 15 TO MH 20	LOT 221	440.88
MH 44 TO MH 45	LOT 45	441.08	MH 55 TO MH 56	LOT 55	467.36	MH 57 TO MH 58	LOT 255	445.47	MH 15 TO MH 20	LOT 221	440.88
MH 45 TO MH 46	LOT 46	441.08	MH 56 TO MH 57	LOT 56	467.36	MH 58 TO MH 59	LOT 256	445.47	MH 15 TO MH 20	LOT 221	440.88
MH 46 TO MH 47	LOT 47	441.08	MH 57 TO MH 58	LOT 57	467.36	MH 59 TO MH 60	LOT 257	445.47	MH 15 TO MH 20	LOT 221	440.88
MH 47 TO MH 48	LOT 48	441.08	MH 58 TO MH 59	LOT 58	467.36	MH 60 TO MH 61	LOT 258	445.47	MH 15 TO MH 20	LOT 221	440.88
MH 48 TO MH 49	LOT 49	441.08	MH 59 TO MH 60	LOT 59	467.36	MH 61 TO MH 62	LOT 259	445.47	MH 15 TO MH 20	LOT 221	440.88
MH 49 TO MH 50	LOT 50	441.08	MH 60 TO MH 61	LOT 60	467.36	MH 62 TO MH 63	LOT 260	445.47	MH 15 TO MH 20	LOT 221	440.88
MH 50 TO MH 51	LOT 51	441.08	MH 61 TO MH 62	LOT 61	467.36	MH 63 TO MH 64	LOT 261	445.47	MH 15 TO MH 20	LOT 221	440.88
MH 51 TO MH 52	LOT 52	441.08	MH 62 TO MH 63	LOT 62	467.36	MH 64 TO MH 65	LOT 262	445.47	MH 15 TO MH 20	LOT 221	440.88
MH 52 TO MH 53	LOT 53	441.08	MH 63 TO MH 64	LOT 63	467.36	MH 65 TO MH 66	LOT 263	445.47	MH 15 TO MH 20	LOT 221	440.88
MH 53 TO MH 54	LOT 54	441.08	MH 64 TO MH 65	LOT 64	467.36	MH 66 TO MH 67	LOT 264	445.47	MH 15 TO MH 20	LOT 221	440.88
MH 54 TO MH 55	LOT 55	441.08	MH 65 TO MH 66	LOT 65	467.36	MH 67 TO MH 68	LOT 265	445.47	MH 15 TO MH 20	LOT 221	440.88
MH 55 TO MH 56	LOT 56	441.08	MH 66 TO MH 67	LOT 66	467.36	MH 68 TO MH 69	LOT 266	445.47	MH 15 TO MH 20	LOT 221	440.88
MH 56 TO MH 57	LOT 57	441.08	MH 67 TO MH 68	LOT 67	467.36	MH 69 TO MH 70	LOT 267	445.47	MH 15 TO MH 20	LOT 221	440.88
MH 57 TO MH 58	LOT 58	441.08	MH 68 TO MH 69	LOT 68	467.36	MH 70 TO MH 71	LOT 268	445.47	MH 15 TO MH 20	LOT 221	440.88
MH 58 TO MH 59	LOT 59	441.08	MH 69 TO MH 70	LOT 69	467.36	MH 71 TO MH 72	LOT 269	445.47	MH 15 TO MH 20	LOT 221	440.88
MH 59 TO MH 60	LOT 60	441.08	MH 70 TO MH 71	LOT 70	467.36	MH 72 TO MH 73	LOT 270	445.47	MH 15 TO MH 20	LOT 221	440.88
MH 60 TO MH 61	LOT 61	441.08	MH 71 TO MH 72	LOT 71	467.36	MH 73 TO MH 74	LOT 271	445.47	MH 15 TO MH 20	LOT 221	440.88
MH 61 TO MH 62	LOT 62	441.08	MH 72 TO MH 73	LOT 72	467.36	MH 74 TO MH 75	LOT 272	445.47	MH 15 TO MH 20	LOT 221	440.88
MH 62 TO MH 63	LOT 63	441.08	MH 73 TO MH 74	LOT 73	467.36	MH 75 TO MH 76	LOT 273	445.47	MH 15 TO MH 20	LOT 221	440.88
MH 63 TO MH 64	LOT 64	441.08	MH 74 TO MH 75	LOT 74	467.36	MH 76 TO MH 77	LOT 274	445.47	MH 15 TO MH 20	LOT 221	440.88
MH 64 TO MH 65	LOT 65	441.08	MH 75 TO MH 76	LOT 75	467.36	MH 77 TO MH 78	LOT 275	445.47	MH 15 TO MH 20	LOT 221	440.88
MH 65 TO MH 66	LOT 66	441.08	MH 76 TO MH 77	LOT 76	467.36	MH 78 TO MH 79	LOT 276	445.47	MH 15 TO MH 20	LOT 221	440.88
MH 66 TO MH 67	LOT 67	441.08	MH 77 TO MH 78	LOT 77	467.36	MH 79 TO MH 80	LOT 277	445.47	MH 15 TO MH 20	LOT 221	440.88
MH 67 TO MH 68	LOT 68	441.08	MH 78 TO MH 79	LOT 78	467.36	MH 80 TO MH 81	LOT 278	445.47	MH 15 TO MH 20	LOT 221	440.88
MH 68 TO MH 69	LOT 69	441.08	MH 79 TO MH 80	LOT 79	467.36	MH 81 TO MH 82	LOT 279	445.47	MH 15 TO MH 20	LOT 221	440.88
MH 69 TO MH 70	LOT 70	441.08	MH 80 TO MH 81	LOT 80	467.36	MH 82 TO MH 83	LOT 280	445.47	MH 15 TO MH 20	LOT 221	440.88
MH 70 TO MH 71	LOT 71	441.08	MH 81 TO MH 82	LOT 81	467.36	MH 83 TO MH 84	LOT 281	445.47	MH 15 TO MH 20	LOT 221	440.88
MH 71 TO MH 72	LOT 72	441.08	MH 82 TO MH 83	LOT 82	467.36	MH 84 TO MH 85	LOT 282	445.47	MH 15 TO MH 20	LOT 221	440.88
MH 72 TO MH 73	LOT 73	441.08	MH 83 TO MH 84	LOT 83	467.36	MH 85 TO MH 86	LOT 283	445.47	MH 15 TO MH 20	LOT 221	440.88
MH 73 TO MH 74	LOT 74	441.08	MH 84 TO MH 85	LOT 84	467.36	MH 86 TO MH 87	LOT 284	445.47	MH 15 TO MH 20	LOT 221	440.88
MH 74 TO MH 75	LOT 75	441.08	MH 85 TO MH 86	LOT 85	467.36	MH 87 TO MH 88	LOT 285	445.47	MH 15 TO MH 20	LOT 221	440.88
MH 75 TO MH 76	LOT 76	441.08	MH 86 TO MH 87	LOT 86	467.36	MH 88 TO MH 89	LOT 286	445.47	MH 15 TO MH 20	LOT 221	440.88
MH 76 TO MH 77	LOT 77	441.08	MH 87 TO MH 88	LOT 87	467.36	MH 89 TO MH 90	LOT 287	445.47	MH 15 TO MH 20	LOT 221	440.88
MH 77 TO MH 78	LOT 78	441.08	MH 88 TO MH 89	LOT 88	467.36	MH 90 TO MH 91	LOT 288	445.47	MH 15 TO MH 20	LOT 221	440.88
MH 78 TO MH 79	LOT 79	441.08	MH 89 TO MH 90	LOT 89	467.36	MH 91 TO MH 92	LOT 289	445.47	MH 15 TO MH 20	LOT 221	440.88
MH 79 TO MH 80	LOT 80	441.08	MH 90 TO MH 91	LOT 90	467.36	MH 92 TO MH 93	LOT 290	445.47	MH 15 TO MH 20	LOT 221	440.88
MH 80 TO MH 81	LOT 81	441.08	MH 91 TO MH 92	LOT 91	467.36	MH 93 TO MH 94	LOT 291	445.47	MH 15 TO MH 20	LOT 221	440.88
MH 81 TO MH 82	LOT 82	441.08	MH 92 TO MH 93	LOT 92	467.36	MH 94 TO MH 95	LOT 292	445.47	MH 15 TO MH 20	LOT 221	440.88
MH 82 TO MH 83	LOT 83	441.08	MH 93 TO MH 94	LOT 93	467.36	MH 95 TO MH 96	LOT 293	445.47	MH 15 TO MH 20	LOT 221	440.88
MH 83 TO MH 84	LOT 84	441.08	MH 94 TO MH 95	LOT 94	467.36	MH 96 TO MH 97	LOT 294	445.47	MH 15 TO MH 20	LOT 221	440.88
MH 84 TO MH 85	LOT 85	441.08	MH 95 TO MH 96	LOT 95	467.36	MH 97 TO MH 98	LOT 295	445.47	MH 15 TO MH 20	LOT 221	440.88
MH 85 TO MH 86	LOT 86	441.08	MH 96 TO MH 97	LOT 96	467.36	MH 98 TO MH 99	LOT 296	445.47	MH 15 TO MH 20	LOT 221	440.88
MH 86 TO											

MEADOW CREEK TERRACE

MORNINGSIDE LANE



PROFILE  
 HORIZ. 1"=50'  
 VERT. 1"=5'

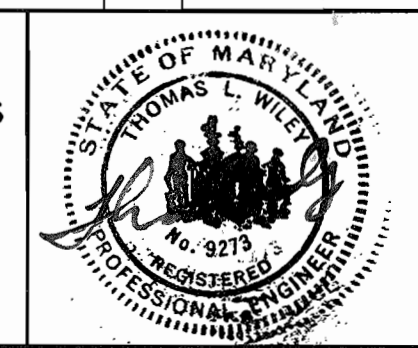
\* NOTE: INVERTS OF S.H.C. ARE GIVEN AT RIGHT-OF-WAYS OR EASEMENTS

DEPARTMENT OF PUBLIC WORKS  
 HOWARD COUNTY, MARYLAND

Director of Public Works: *Robert J. DeWitt* 3/20/89  
 Chief, Bureau of Engineering: *William E. Riley* 3-21-89  
 Chief, Bureau of Utilities: *Robert J. DeWitt* 3-20-89  
 Chief, Land Development Division: *William E. Riley* 3/20/89

DEWBERRY & DAVIS  
 ARCHITECTS ENGINEERS PLANNERS SURVEYORS

3300 N. RIDGE ROAD  
 SUITE 100  
 ELLICOTT CITY, MARYLAND 21043  
 (301) 461-7478



DES: WED	DATE: JULY 1985
DRN: WLB, WEO	BY: NO.
CHK: WLB, WEO	REVISION
KMG	DATE

REV. AS PER REDLINE COMMENTS 7/10/90	10/1/90
REV. AS PER HOWARD CO COMMENTS JAN 26, 1996	2-21-96
REVISED PER COMMENTS DATED SEPT. 5, 1989	9/20/89
REVISED PER COMMENTS DATED DECEMBER 5, 1988	11/30/88

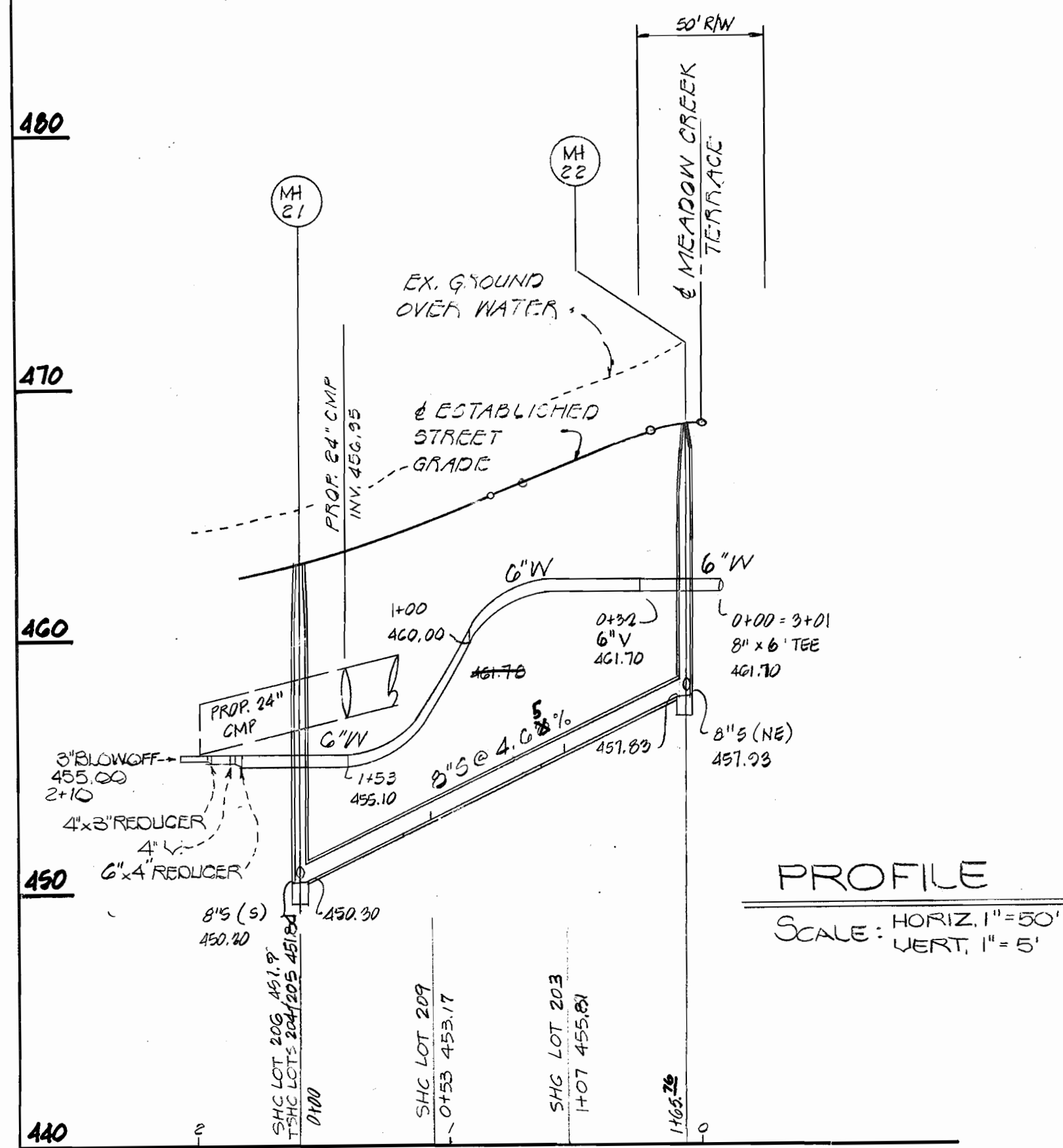
PROFILE  
 WATER & SEWER MAIN

600' SCALE MAP NO. 31 BLOCK NO. 14

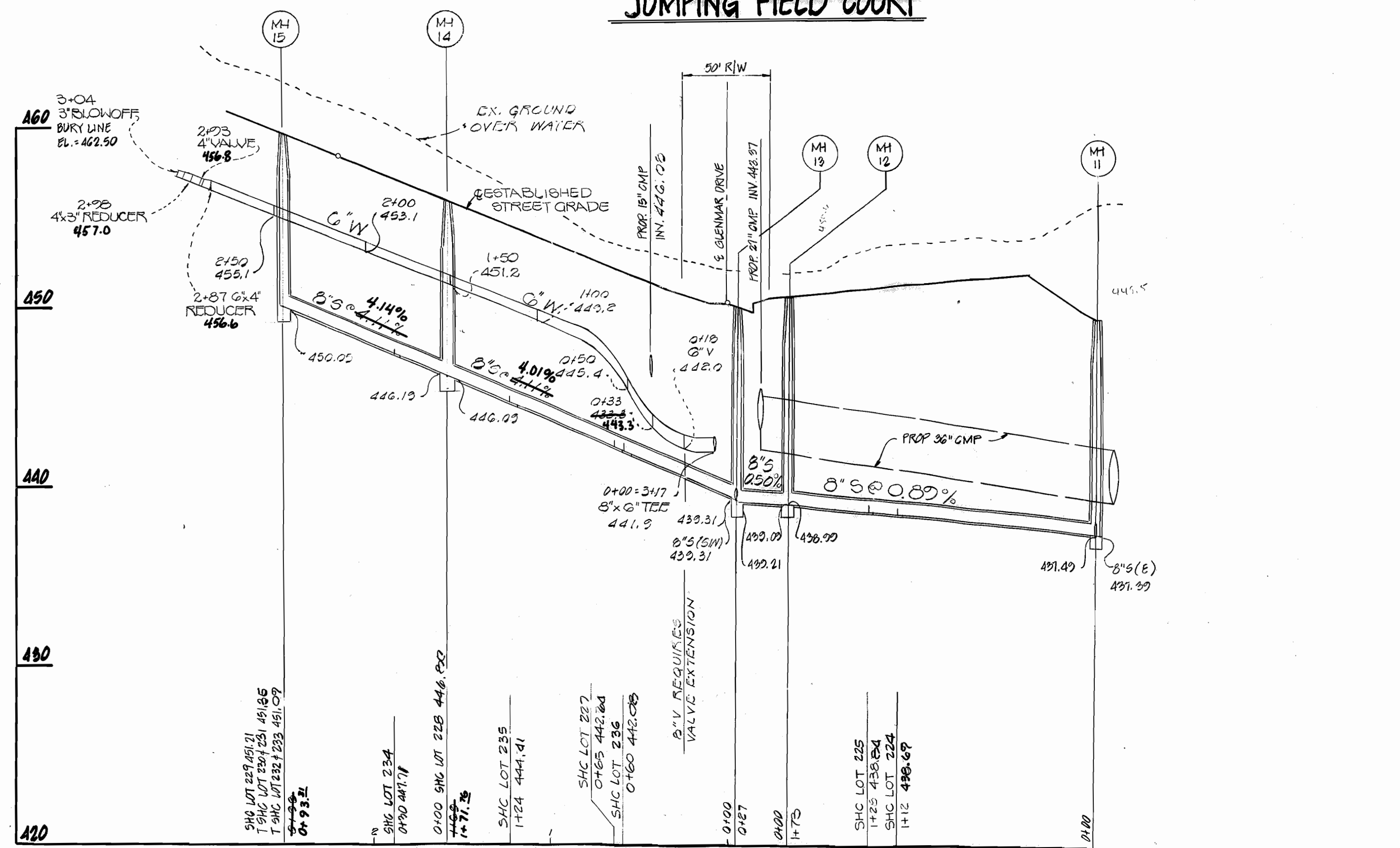
MONTGOMERY MEADOWS  
 SECTION ONE, AREA FOUR  
 CONTRACT NO. 14-1767-D  
 1st ELECTION DISTRICT  
 HOWARD COUNTY, MARYLAND

SCALE AS SHOWN  
 SHEET 4 OF 6

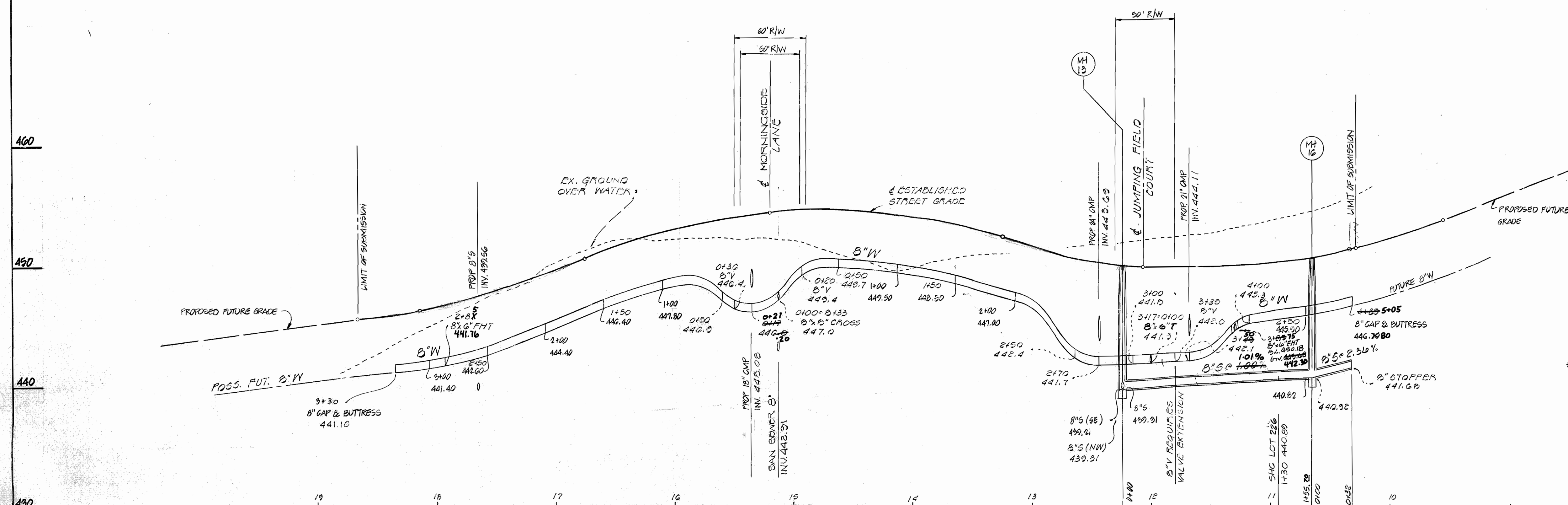
**GOLDEN LEAF COURT**



**JUMPING FIELD COURT**



**GLENMAR DRIVE**



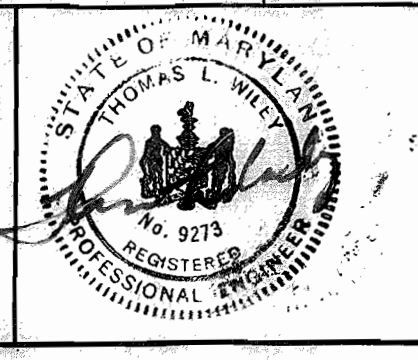
**PROFILE**  
SCALE: HORIZ. 1"=50'  
VERT. 1"=5'

\* NOTE: INVERTS OF SHC ARE GIVEN AT RIGHT-OF-WAYS OR EASEMENTS

CONTRACT NO. 14-1767-D  
MONTGOMERY MEADOWS  
SECTION ONE AREA FOUR  
WATER & SEWER MAIN EXTENSIONS

DEPARTMENT OF PUBLIC WORKS  
HOWARD COUNTY, MARYLAND  
3-20-89  
DATE

DEWBERRY & DAVIS  
ARCHITECTS-ENGINEERS-PLANNERS-SURVEYORS  
3300 N. RIDGE ROAD  
SUITE 100  
ELLCOTT CITY, MD. 21043  
(301) 461-7478



DES: WLD	DATE: JUL 1988
DRN: WDG	BY: NO.
CHK: WLB	REVISION
DATE: JUL 1988	REVISION

**PROFILE**  
**WATER & SEWER MAIN**

MONTGOMERY MEADOWS  
SECTION ONE AREA FOUR  
CONTRACT NO. 14-1767-D  
1st ELECTION DISTRICT  
HOWARD COUNTY, MARYLAND  
AS-R111T 3-12-91  
SCALE AS SHOWN  
SHEET 5 OF 6

