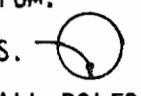
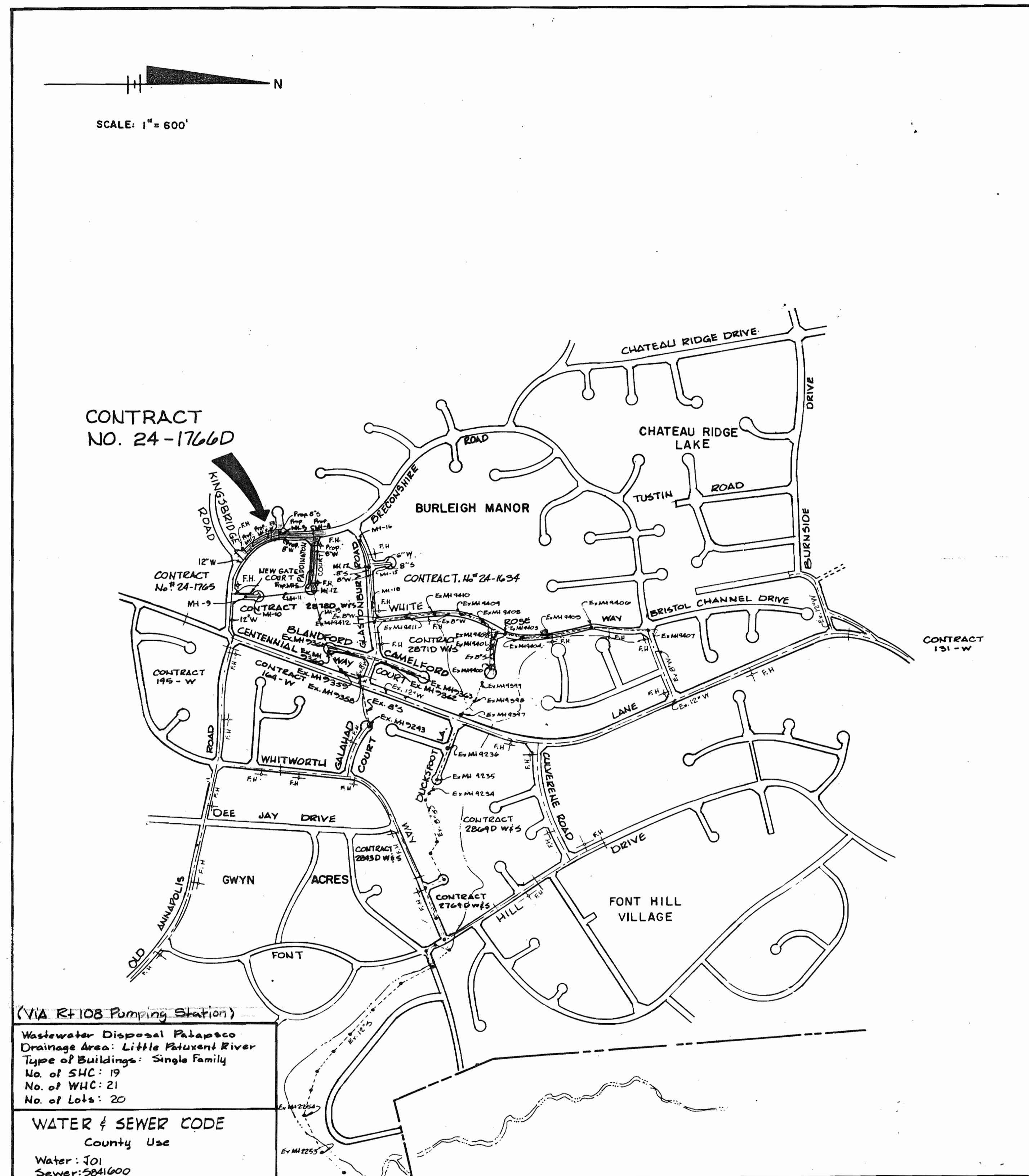


GENERAL NOTES

- APPROXIMATE LOCATION OF EXISTING MAINS ARE SHOWN. THE CONTRACTOR SHALL TAKE ALL NECESSARY PRECAUTIONS TO PROTECT EXISTING MAINS AND SERVICES AND MAINTAIN UNINTERRUPTED SUPPLY. ANY DAMAGE INCURRED SHALL BE REPAIRED IMMEDIATELY TO THE SATISFACTION OF THE ENGINEER, AT THE CONTRACTOR'S EXPENSE.
- ALL HORIZONTAL CONTROLS ARE BASED ON MARYLAND STATE COORDINATES.
- ALL VERTICAL CONTROLS ARE BASED ON U.S.G.S. DATUM.
- ALL PIPE ELEVATIONS SHOWN ARE INVERT ELEVATIONS.
- CLEAR ALL UTILITIES BY A MINIMUM OF 6". CLEAR ALL POLES BY 2'-0" MINIMUM OR TUNNEL AS REQUIRED.
- FOR DETAILS NOT SHOWN ON THE DRAWINGS, AND FOR MATERIALS AND CONSTRUCTION METHODS USED HOWARD COUNTY DESIGN MANUAL, VOLUME IV, STANDARD SPECIFICATIONS AND DETAILS FOR CONSTRUCTION. THE CONTRACTOR SHALL HAVE A COPY OF VOLUME IV ON THE JOB.
- WHERE TEST PITS HAVE BEEN MADE ON EXISTING UTILITIES, THEY ARE NOTED BY THE SYMBOL  AT THE LOCATION OF THE TEST PIT. A NOTE OR NOTES CONTAINING THE RESULTS OF THE TEST PIT OR PITS IS INCLUDED ON THE DRAWINGS. EXISTING UTILITIES IN THE VICINITY OF THE PROPOSED WORK FOR WHICH TEST PITS HAVE NOT BEEN DUG SHALL BE VERIFIED BY THE CONTRACTOR TO HIS OWN SATISFACTION. ANY DAMAGE TO EXISTING FACILITIES DUE TO THE CONTRACTOR'S NEGLIGENCE SHALL BE REPAIRED AT THE CONTRACTOR'S EXPENSE.
- CONTRACTOR SHALL NOTIFY THE FOLLOWING UTILITIES OR AGENCIES AT LEAST FIVE WORKING DAYS BEFORE STARTING WORK SHOWN ON THESE PLANS:
 - STATE HIGHWAY ADMINISTRATION - 531-5533
 - BALTIMORE GAS AND ELECTRIC CO. - CONTRACTOR SERVICES 850-4620
 - BALTIMORE GAS AND ELECTRIC CO. - UNDER GROUND DAMAGE CONTROL - 859-9004
 - BALTIMORE GAS AND ELECTRIC CO. - TROUBLE SHOOTING - 298-9001
 - MISS UTILITY - 1 - 559-0100
 - COLONIAL PIPELINE CO. - 795-1390/C&P TELEPHONE CO. - 1-800-257-7777
 - BUREAU OF UTILITIES HOWARD COUNTY DEPARTMENT OF PUBLIC WORKS - 992-2366
- TREES AND SHRUBS ARE TO BE PROTECTED FROM DAMAGE TO A MAXIMUM EXTENT. TREES AND SHRUBS, LOCATED WITHIN THE CONSTRUCTION STRIP ARE NOT TO BE REMOVED OR DAMAGED BY THE CONTRACTOR.
- CONTRACTOR SHALL REMOVE TREES, STUMPS AND ROOTS ALONG LINE OF EXCAVATION.
- ALL WATER MAINS TO BE D.I.P. CLASS 52 UNLESS OTHERWISE NOTED.
- TOPS OF ALL WATER MAINS TO HAVE A MINIMUM OF 3-1/2' COVER UNLESS OTHERWISE NOTED.
- VALVES ADJACENT TO TEES SHALL BE STRAPPED TO TEES.
- ALL FITTINGS SHALL BE BUTTRESSED OR ANCHORED WITH CONCRETE IN ACCORDANCE WITH THE STANDARD DETAILS UNLESS OTHERWISE PROVIDED FOR ON THE DRAWINGS.
- FIRE HYDRANTS SHALL BE SET TO THE BURY LINE ELEVATIONS SHOWN ON THE DRAWINGS. ALL FIRE HYDRANTS SHALL BE STRAPPED AND BUTTRESSED WITH CONCRETE IN ACCORDANCE WITH STANDARD DETAILS. SOIL AROUND THE FIRE HYDRANT SHALL BE COMPACTED IN ACCORDANCE WITH SECTION 1003 THE STANDARD SPECIFICATIONS.
- THE CONTRACTOR SHALL NOT OPERATE ANY WATER MAIN VALVES ON THE EXISTING WATER SYSTEM.
- ALL WATER HOUSE CONNECTIONS SHALL BE FOR INSIDE METER SETTINGS. UNLESS OTHERWISE NOTED ON THE PLANS OR IN THE SPECIFICATIONS.
- ALL W.H.C.'S SHALL BE 3/4" UNLESS OTHERWISE NOTED.
- ALL COPPER WATER HOUSE CONNECTIONS SHALL UTILIZE FLARED FITTINGS.
- ALL SEWER MAINS SHALL BE C.S.P.X., D.I.P., V.C.P.X., A.C.P. CLASS 2400 OR P.V.C. UNLESS OTHERWISE NOTED.
- THE CONTRACTOR SHALL PROVIDE A JOINT IN ALL SEWER MAINS WITHIN 2'-0" OF EXTERIOR MANHOLE WALL.
- ALL MANHOLES SHALL BE 4'-0" INSIDE DIAMETER UNLESS OTHERWISE NOTED.
- MANHOLES SHOWN WITH 12" AND 16" WALLS ARE FOR BRICK MANHOLES ONLY.
- MANHOLES DESIGNATED W.T. IN PLAN AND PROFILE SHALL HAVE WATERTIGHT FRAME AND COVERS. STANDARD DETAIL 65.52 WHERE WATERTIGHT MANHOLE FRAME AND COVER IS USED, SET TOP OF FRAME 1.5' ABOVE FINISHED GRADE UNLESS OTHERWISE NOTED ON THE DRAWINGS.
- STRAW BALE DIKE AND SILT FENCE ARE INTERCHANGEABLE.
- FOR MANHOLES IN OPEN SPACE OR OUTFALL, SET TOP OF FRAME 1.5' ABOVE FINISHED GRADE UNLESS OTHERWISE NOTED ON THE DRAWINGS.
- ALL D.I.P. FITTINGS SHALL BE IN ACCORDANCE WITH AWWA SPECIFICATION C-153 DUCTILE IRON COMPACT FITTINGS, 3-INCH THROUGH 12-INCH FOR WATER AND OTHER LIQUIDS.

ITEM	QUANTITIES		MATERIAL/SUPPLIER
	BID	AS BUILT	
8" Sewer LF	1040	1043	PVC / J.M. Man
Sewer Manholes	5	5	A. Precast
8" Water LF	1200	1205	DIP / S.J. McWane
6" Water LF	45	144	DIP / S.J. McWane
Fire Hydrants Ea.	4	4	Mueller
8" Valve Ea.	2	2	DIP / Mueller
6" V(Except F.H.)	1	1	DIP / Mueller
1" WHC LF	140	140	Copper / Howell
3/4" WHC LF	440	440	Copper / Howell
6" SHC LF	490	450	PVC / J.M. Man
1/8" Bend	1	1	DIP / Griffin



CONTRACT NO. 24-1766 D
 BURLEIGH MANOR
 HOWARD COUNTY, MARYLAND
 DEPARTMENT OF PUBLIC WORKS

REVIEWED FOR HOWARD SOIL CONSERVATION DISTRICT AND MEETS TECHNICAL REQUIREMENT


James M. Helm 5-6-88
 SIGNATURE DATE
 U.S. SOIL CONSERVATION SERVICE

This Development Plan is approved for Soil Erosion and Sediment Control by the Howard County Conservation District
 APPROVED

Stephen L. Horn 5/5/88
 HOWARD S.C.D. DATE

Sediment Control Measures for this Contract will be implemented in accordance with Section 219 of the Standard Specifications and Road Construction Drawings F-88-108

DEPARTMENT OF PUBLIC WORKS
 HOWARD COUNTY, MARYLAND
Ramon J. Davis 5/16/88
 DIRECTOR OF PUBLIC WORKS - DATE
Ruth M. Bessinger 5-4-88
 CHIEF - BUREAU OF UTILITIES - DATE

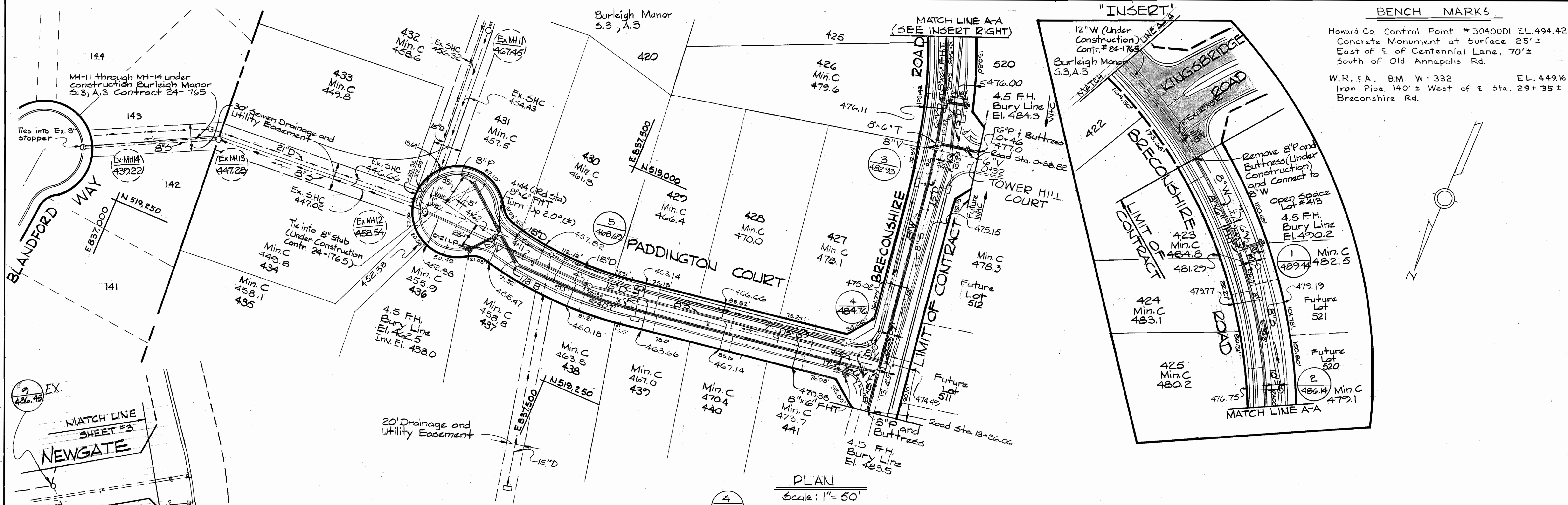
WHITMAN, REQUARDT
 AND ASSOCIATES
 ENGINEERS
 2315 ST PAUL ST
 BALTIMORE, MARYLAND


DES	SJG				
CHK	R.L.P.				
CHK	R.B.N.				
DATE	5/6	1	Bureau of Engineering Comments #6	2-208	
BY	NO	REVISION	DATE	600' SCALE MAP NO	BLOCK NO

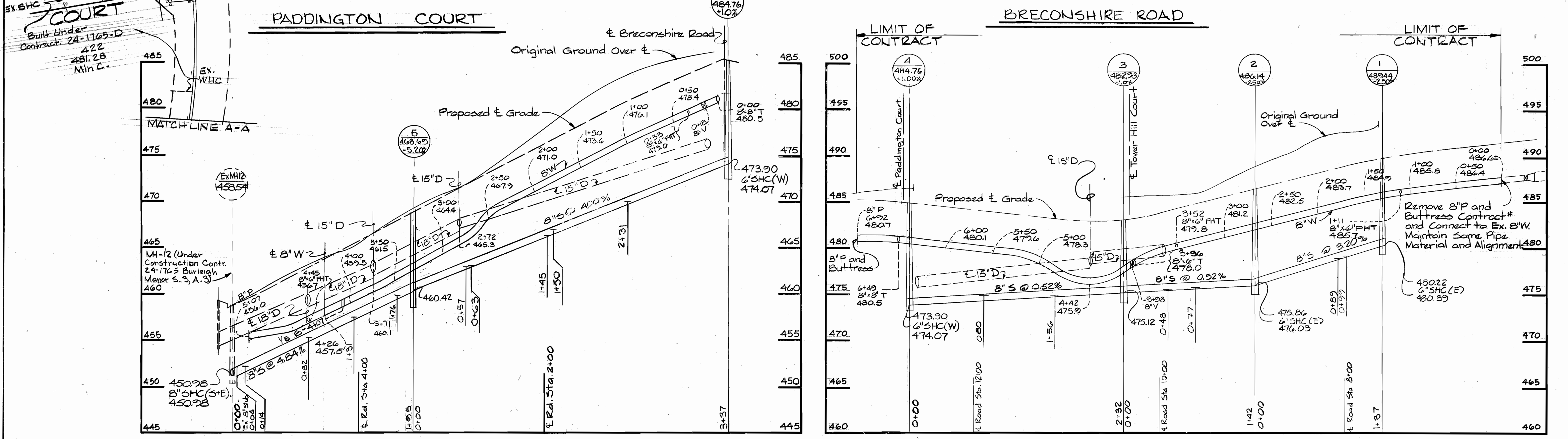
VICINITY MAP
 AND
 GENERAL NOTES

BURLEIGH MANOR
 SECTION 3 AREA 4
 LOTS 422 - 441
 ELECTION DISTRICT NO. 2
 CONTRACT NO. 24-1766 D
 SCALE 1"=600'
 SHEET 1 OF 2

Howard Co. Control Point #3040001 EL.494.42
Concrete Monument at surface 25'±
East of E of Centennial Lane, 70'±
South of Old Annapolis Rd.
W.R. & A. B.M. W-332 EL.449.16
Iron Pipe 140'± West of E Sta. 29+35±
Breconshire Rd.



PLAN
Scale: 1" = 50'



Scale: Hor. 1" = 50'
Ver. 1" = 5'

Scale: Hor. 1" = 50'
Ver. 1" = 5'

24+ 518-837.5
24+ 519-839
24+ 519-837.5

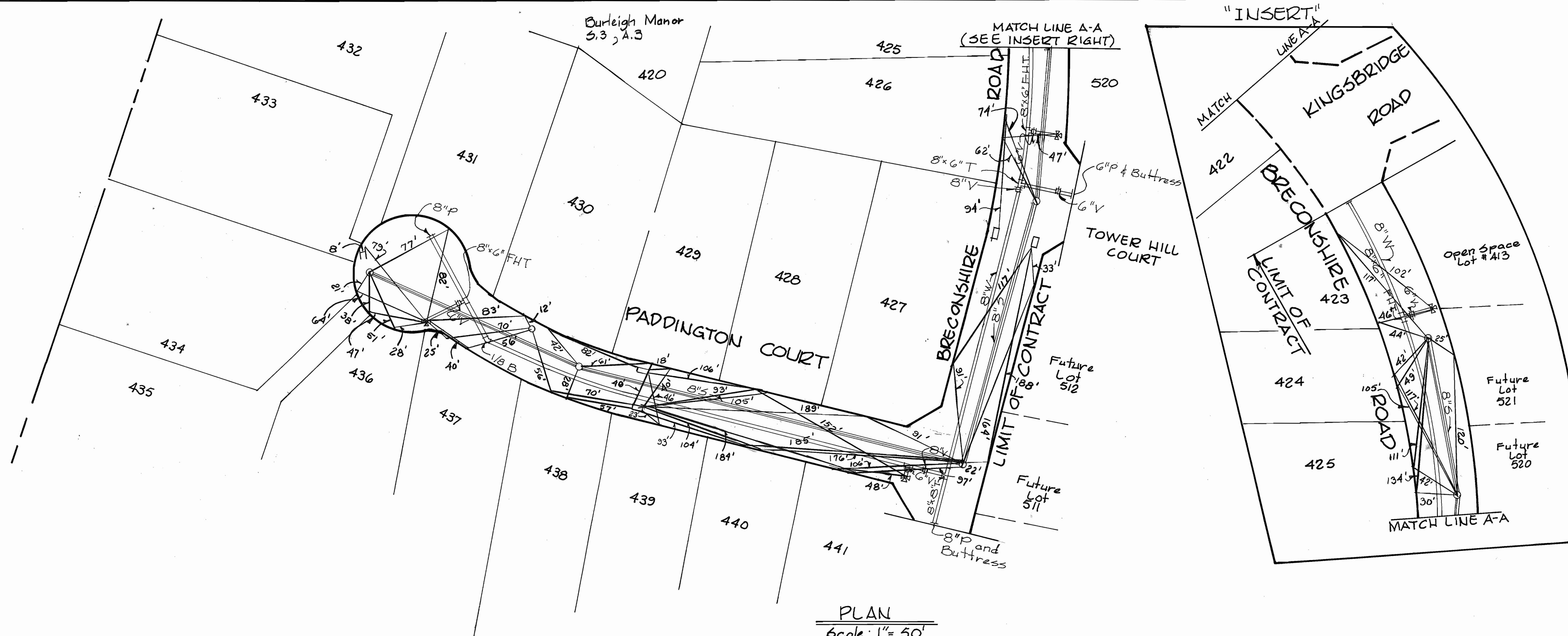
DEPARTMENT OF PUBLIC WORKS
HOWARD COUNTY, MARYLAND
Director of Public Works - DATE
Chief - Bureau of Engineering - DATE
Chief - Bureau of Utilities - DATE
Chief - Land Development Division - DATE

WHITMAN, REQUARDT
AND ASSOCIATES
ENGINEERS
2315 ST. PAUL ST.
BALTIMORE, MARYLAND 21218

Table with columns: DES, ARN, CHK, DATE, BY, NO., REVISION, DATE. Includes revision notes from Bureau of Engineering.

PLAN & PROFILE OF
WATER & SEWER MAINS

BURLEIGH MANOR
SECTION 3 AREA 4
ELECTION DISTRICT NO. 2
CONTRACT NO. 24-1766 D
SCALE AS SHOWN
SHEET 2 OF 2



PLAN
Scale: 1" = 50'

DEPARTMENT OF PUBLIC WORKS
HOWARD COUNTY, MARYLAND

DIRECTOR OF PUBLIC WORKS _____ DATE _____ CHIEF, BUREAU OF ENGINEERING _____ DATE _____

DES:					
DRN:					
CHK:					
DATE:	BY	NO.	REVISION	DATE	600' SCALE MAP NO. _____ BLOCK NO. _____

AS BUILT OF
WATER & SEWER MAINS

BURLEIGH MANOR
SECTION 3 AREA 4
CONTRACT NO. 24-1766 D

SCALE
AS
SHOWN

SHEET
2 A OF 2

AS BUILT 10/3/08