

VICINITY MAP
SCALE: 1" = 600'
GENERAL NOTES

- APPROXIMATE LOCATION OF EXISTING MAINS ARE SHOWN. THE CONTRACTOR SHALL TAKE ALL NECESSARY PRECAUTIONS TO PROTECT EXISTING MAINS AND SERVICES AND MAINTAIN UNINTERRUPTED SUPPLY. ANY DAMAGE INCURRED SHALL BE REPAIRED IMMEDIATELY TO THE SATISFACTION OF THE ENGINEER AT THE CONTRACTOR'S EXPENSE.
- ALL HORIZONTAL CONTROLS ARE BASED ON MARYLAND STATE COORDINATES.
- ALL VERTICAL CONTROLS ARE BASED ON U.S.G.S. DATA.
- ALL PIPE ELEVATIONS SHOWN ARE INVERT ELEVATIONS.
- CLEAR ALL UTILITIES BY A MINIMUM OF 6" CLEAR ALL POLES BY 2'-0" MINIMUM OR TUNNEL AS REQUIRED. THE OWNER HAS CONTACTED THE UTILITY COMPANIES AND HAS MADE ARRANGEMENTS FOR BRACING OF POLES AS SHOWN ON THE DRAWINGS. IN THE EVENT THE CONTRACTOR'S WORK REQUIRES THE BRACING OF ADDITIONAL POLES, ANY COST INCURRED BY THE OWNER FOR THE BRACING OF ADDITIONAL POLES OR DAMAGES SHALL BE DEDUCTED FROM MONEY OWED THE CONTRACTOR. THE CONTRACTOR SHALL COORDINATE WITH THE UTILITY COMPANIES TO SCHEDULE THE BRACING OF THE POLES.
- FOR DETAILS NOT SHOWN ON THE DRAWINGS, AND FOR MATERIALS AND CONSTRUCTION METHODS, USE HOWARD COUNTY DESIGN MANUAL, VOLUME IV, STANDARD SPECIFICATIONS AND DETAILS FOR CONSTRUCTION. THE CONTRACTOR SHALL HAVE A COPY OF VOLUME IV ON THE JOB.
- WHERE TEST PITS HAVE BEEN MADE ON EXISTING UTILITIES, THEY ARE NOTED BY THE SYMBOL \square AT THE LOCATION OF THE TEST PIT. A NOTE OR NOTES CONTAINING THE RESULTS OF THE TEST PIT OR PITS IS INCLUDED ON THE DRAWINGS. EXISTING UTILITIES IN THE VICINITY OF THE PROPOSED WORK FOR WHICH TEST PITS HAVE NOT BEEN DUG SHALL BE LOCATED BY THE CONTRACTOR TWO WEEKS IN ADVANCE OF CONSTRUCTION OPERATIONS AT HIS OWN EXPENSE.
- CONTRACTOR SHALL NOTIFY THE FOLLOWING UTILITIES OR AGENCIES AT LEAST FIVE WORKING DAYS BEFORE STARTING WORK SHOWN ON THESE PLANS:
 - C&P - 1-800-257-7777
 - STATE HIGHWAY ADMINISTRATION - 531-5533
 - BALTIMORE GAS & ELECTRIC CO. CONTRACTOR SERVICES - 850-4620
 - BALTIMORE GAS & ELECTRIC CO. UNDER GROUND DAMAGE CONTROL - 859-9004
 - BALTIMORE GAS & ELECTRIC CO. TROUBLE SHOOTING - 298-9001
 - MISS UTILITY - 1-559-0100
 - COLONIAL PIPELINE CO. - 795-1390
 - BUREAU OF UTILITIES, HOWARD COUNTY DEPARTMENT OF PUBLIC WORKS - 992-2366
- TREES ARE TO BE PROTECTED FROM DAMAGE TO MAXIMUM EXTENT. TREES LOCATED WITHIN THE CONSTRUCTION STRIP ARE NOT TO BE REMOVED OR DAMAGED BY THE CONTRACTOR.
- CONTRACTOR SHALL REMOVE TREES, STUMPS AND ROOTS ALONG LINE OF EXCAVATION AS DIRECTED BY THE ENGINEER. PAYMENT FOR SUCH REMOVAL SHALL BE INCLUDED IN THE UNIT PRICE BID FOR EXCAVATION AND BACKFILL.
- PLACE REGULATION "MEN WORKING" AND WARNING SIGNS AS REQUIRED TO COMPLY WITH MARYLAND STATE HIGHWAY ADMINISTRATION MANUAL OF TRAFFIC CONTROL FOR HIGHWAY CONSTRUCTION AND MAINTENANCE OPERATIONS.
- ALL WATER MAINS TO BE 2" I.P. UNLESS OTHERWISE NOTED.
- TOP OF ALL WATER MAINS TO HAVE A MINIMUM OF 3" COVER UNLESS OTHERWISE NOTED.
- VALVES ADJACENT TO TEES SHALL BE STRAPPED TO TEES.
- BLOCK ALL FITTINGS WITH CONCRETE.
- BURY LINE ELEVATIONS ON FIRE HYDRANTS SHALL BE SET TO THE ELEVATIONS SHOWN ON THE DRAWINGS. ALL FIRE HYDRANTS SHALL BE STRAPPED AND BUTTRESSED WITH CONCRETE IN ACCORDANCE WITH STANDARD DETAILS. SOIL AROUND THE FIRE HYDRANT TO BE COMPACTED IN ACCORDANCE WITH SECTIONS 1003 AND 1008 OF THE GENERAL REQUIREMENTS FOR WATER AND SEWER.
- ALL WATER HOUSE CONNECTIONS SHALL BE FOR AN INSIDE METER SETTING.
- THE CONTRACTOR SHALL NOT OPERATE ANY WATER MAIN VALVES ON THE EXISTING SYSTEM.
- FOR ALL COPPER WATER HOUSE CONNECTIONS UTILIZE FLARED TYPE FITTINGS ONLY.
- THE SERVICE CLAMPS ARE TO HAVE STAINLESS STEEL STRAPS.
- ALL SEWER MAINS SHALL BE C.S.P.X., V.C.P.X., P.V.C. OR A.C.P. CLASS 2400 UNLESS OTHERWISE NOTED.
- THE CONTRACTOR SHALL PROVIDE A JOINT IN ALL SEWER MAINS WITHIN 2'-0" OF EXTERIOR MANHOLE WALL.
- ALL MANHOLES SHALL BE 4'-0" INSIDE DIAMETER UNLESS OTHERWISE NOTED.
- MANHOLES SHOWN WITH 12" AND 16" WALLS ARE BRICK MANHOLES ONLY.
- MANHOLES DESIGNATED W.T. IN PLAN AND PROFILE SHALL HAVE WATER TIGHT FRAME AND COVERS, STANDARD DETAIL 65.52 VOLUME 11.
- WHERE WATER TIGHT MANHOLE FRAME AND COVER IS USED, SET TOP OF FRAME 1'-6" ABOVE FINISHED GRADE.
- HOUSE(S) WITH THE SYMBOL "C.N.S." INDICATES THE CELLAR CANNOT BE SERVED.
- ALL WATER HOUSE CONNECTIONS SHALL HAVE A MINIMUM VERTICAL CLEARANCE OF 12" ABOVE ALL SANITARY SEWER CROSSINGS.
- ALL SANITARY SEWER HOUSE CONNECTIONS SHALL HAVE A MINIMUM VERTICAL CLEARANCE OF 12" BELOW ALL WATER MAIN CROSSINGS.
- PROFILE STATIONS SHALL BE ADJUSTED AS NECESSARY TO CONFORM TO PLAN DIMENSIONS.
- NO PIPE SHALL BE LAID UNTIL LINES OF EXCAVATION HAVE BEEN BROUGHT TO SUBGRADE.

ITEM	QUANTITY	AS-BUILT	SUPPLIER
8" SEWER	2209 LF	2301 LF	BEAIRE RD. SUPPLY
6" S/C	1073 LF	1144 LF	BEAIRE RD. SUPPLY
VF MANHOLE	211 VF	211 VF	ATLANTIC CONC. PROD.
6" WATER	408 LF	360 LF	ATLANTIC CONC. PROD.
8" WATER	2607 LF	2124 LF	ATLANTIC CONC. PROD.
8" V	6 EA.	6 EA.	ATLANTIC CONC. PROD.
FIRE HYDRANTS	6 EA.	6 EA.	ATLANTIC CONC. PROD.
1" W/C	495 LF	365 LF	ATLANTIC CONC. PROD.
3/4" W/C	456 LF	650 LF	ATLANTIC CONC. PROD.

HOWARD SOIL CONSERVATION DISTRICT:
REVIEWED FOR HOWARD SOIL CONSERVATION DISTRICT
AND ITS TECHNICAL REQUIREMENTS.
[Signature] 3/17/89
DATE
SOIL CONSERVATION SERVICE

THIS PLAN IS APPROVED FOR SOIL EROSION AND SEDIMENT
CONTROL BY THE HOWARD SOIL CONSERVATION DISTRICT.
[Signature] 3/16/89
DATE
HOWARD SOIL CONSERVATION DISTRICT

SEDIMENT CONTROL MEASURES FOR THIS CONTRACT WILL BE
IMPLEMENTED IN ACCORDANCE WITH SECTION 219 OF THE
HOWARD COUNTY STANDARD SPECIFICATIONS AND AS PER
ROAD CONSTRUCTION PLANS #F-80-03

DEPARTMENT OF PUBLIC WORKS
HOWARD COUNTY, MARYLAND

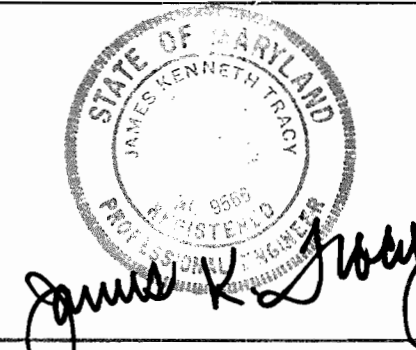
[Signature] 3/16/89
DATE
DIRECTOR OF PUBLIC WORKS

[Signature] 3/20/89
DATE
CHIEF, BUREAU OF ENGINEERING

[Signature] 3/14/89
DATE
CHIEF, BUREAU OF UTILITIES

[Signature] 3/20/89
DATE
CHIEF, LAND DEVELOPMENT DIVISION

TRACY, SCHULTE
& ASSOCIATES INC.
planning architecture engineering
8480 Baltimore National Pike Suite 418
Ellicott City, Maryland 21043



DES: DAM	DRN: JH	CHK:	EJS	CHANGED LOT NUMBERS	5/25/89
DATE: 10-4-80	BY: NO.	REVISION	DATE	600 SCALE MAP NO. 30	BLOCK NO. 6

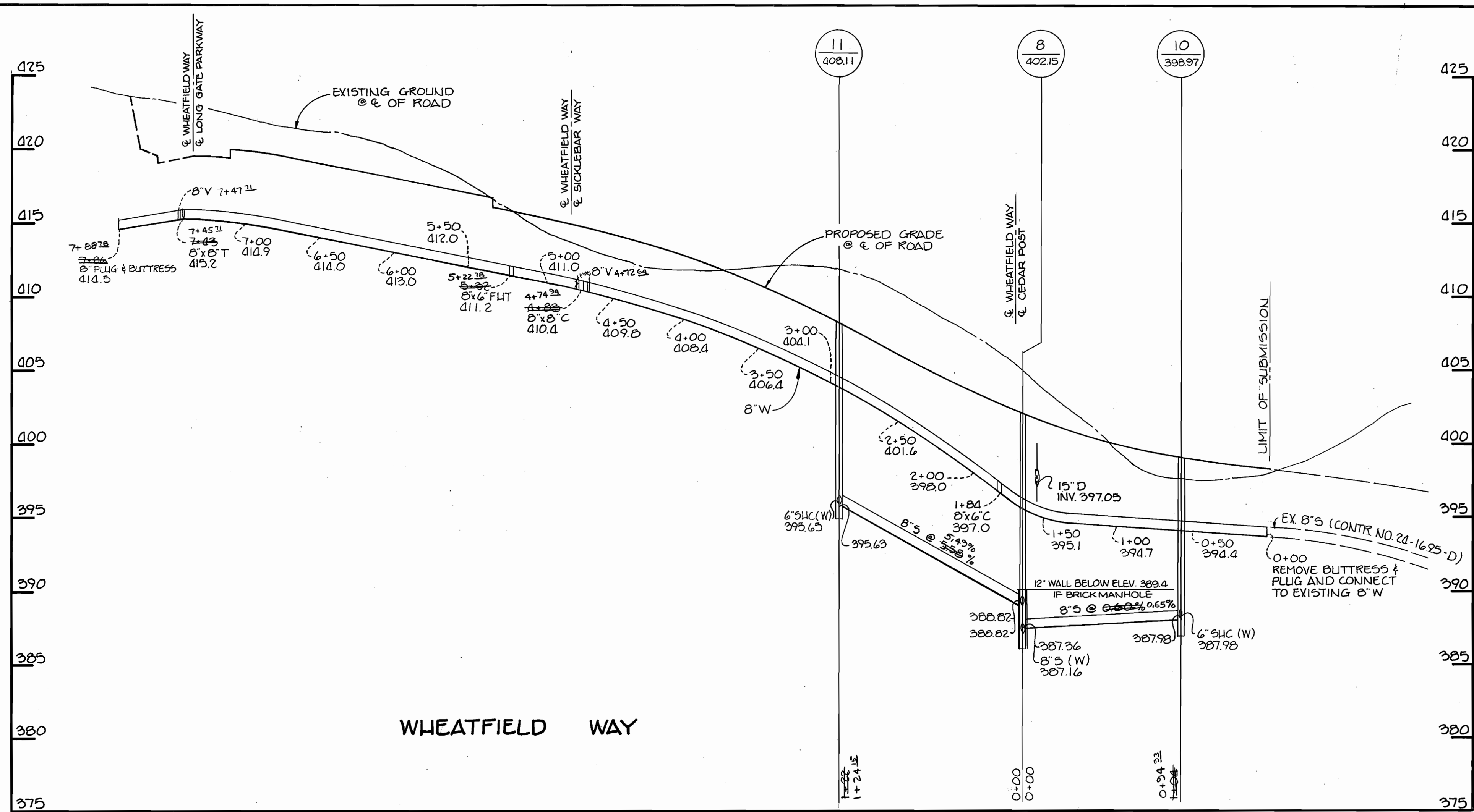
PLAN OF
WATER AND SEWER MAINS

LONG GATE
SECTION 3, AREA 1
ELECTION DISTRICT NO.
CONTRACT NO. 24-1763-D

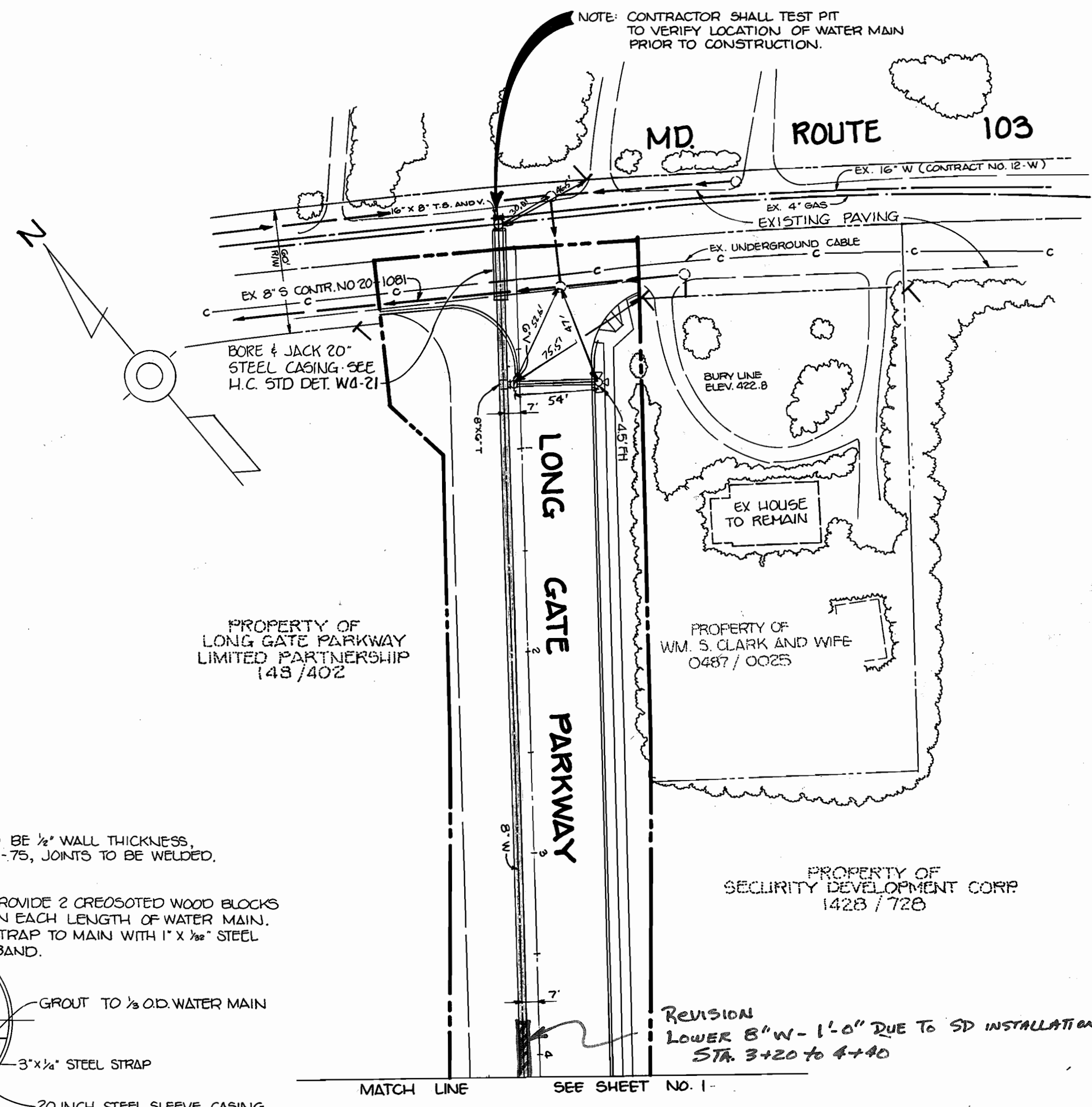
SCALE
AS
SHOWN

SHEET
1 OF 3

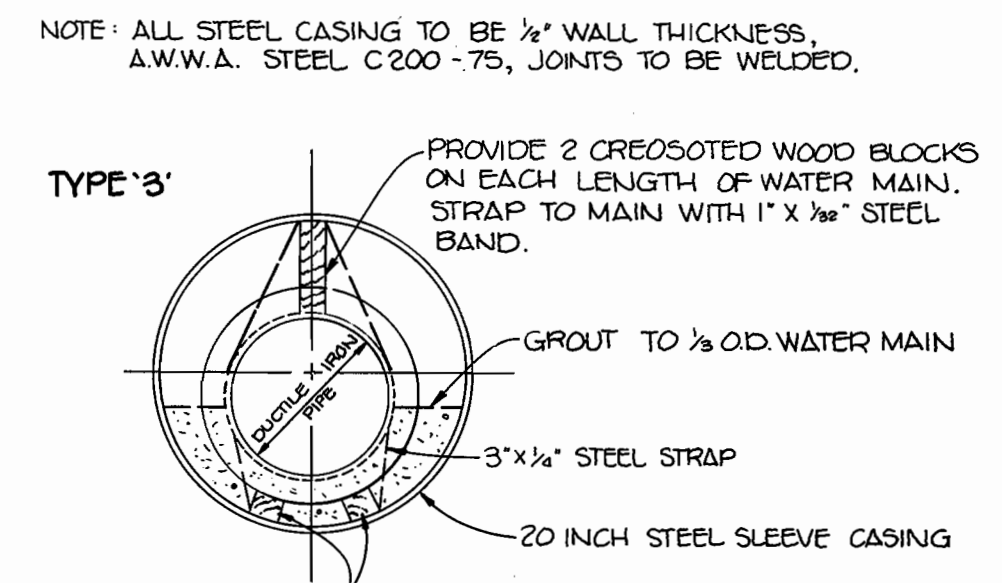
AS-BUILT 2/5/92



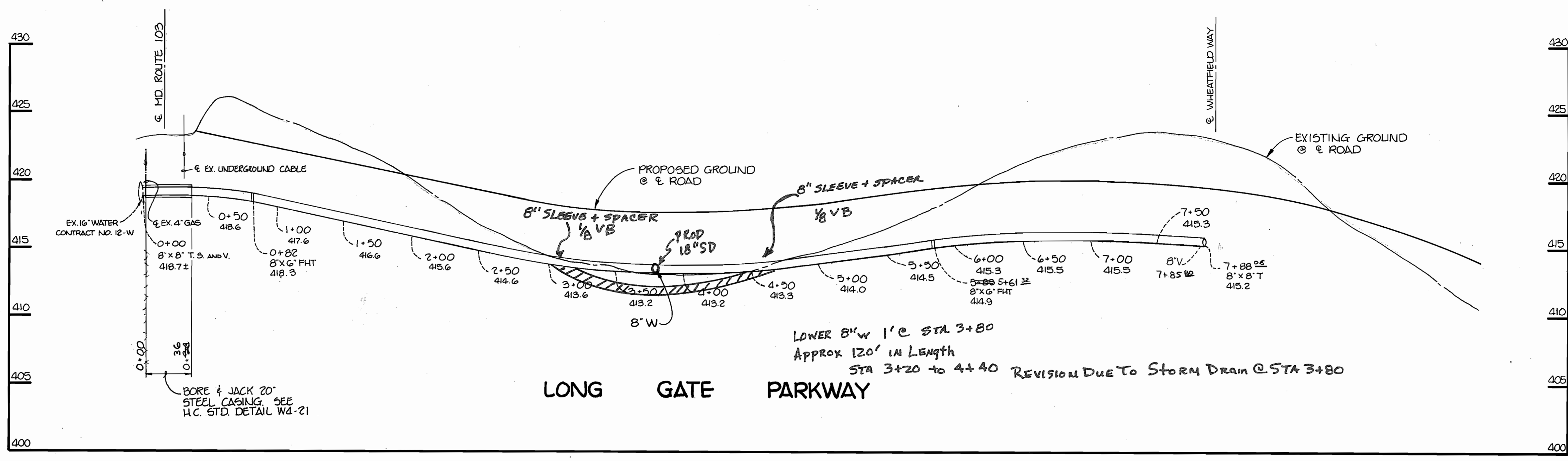
PROFILE
 SCALE: HORIZ. 1"=50'
 VERT. 1"=5'



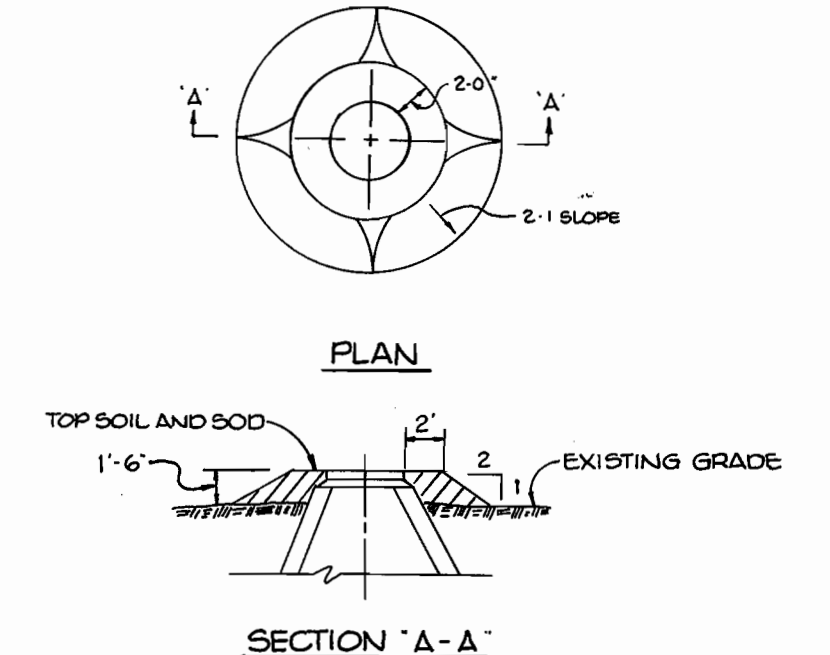
PLAN
 SCALE 1"=50'



BORE AND JACK DETAIL
 NO SCALE



PROFILE
 SCALE: HORIZ. 1"=50'
 VERT. 1"=5'



FILL AROUND MH'S DETAIL
 NO SCALE

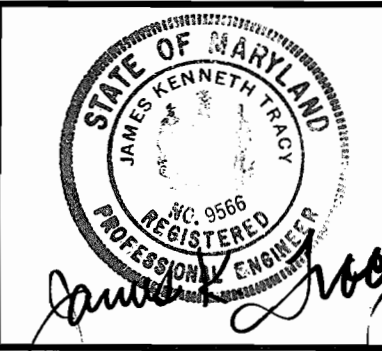
DEPARTMENT OF PUBLIC WORKS
 HOWARD COUNTY, MARYLAND

Roman J. Shaw 3/2/89
 DIRECTOR OF PUBLIC WORKS DATE

Robert J. Benning 3-14-89
 CHIEF, BUREAU OF UTILITIES DATE

TRACY, SCHULTE &
 ASSOCIATES INC.

planning architecture engineering
 8480 Baltimore National Pike Suite 418
 Ellicott City, Maryland 21043



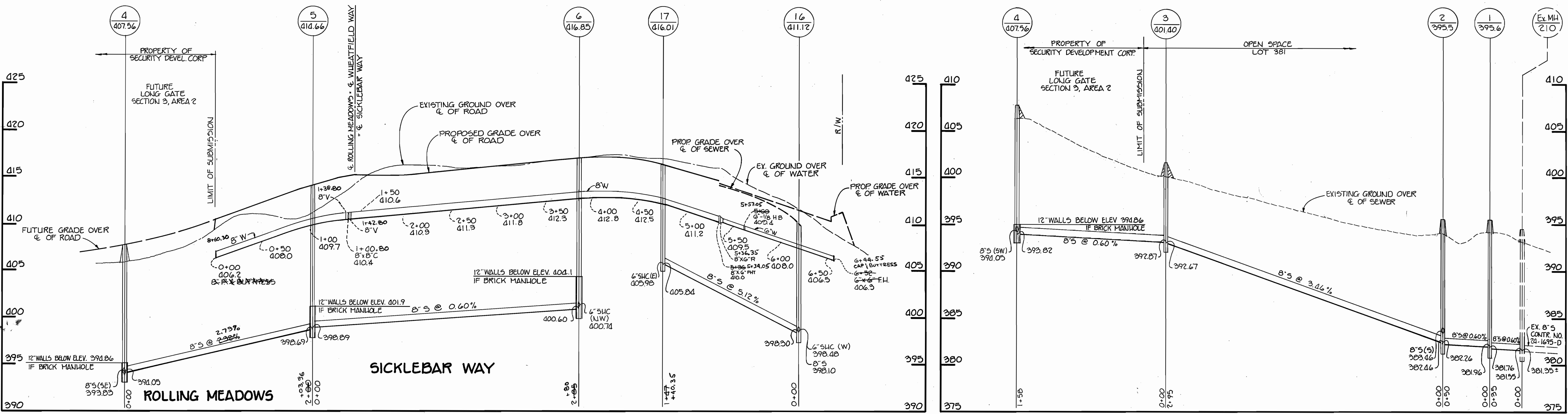
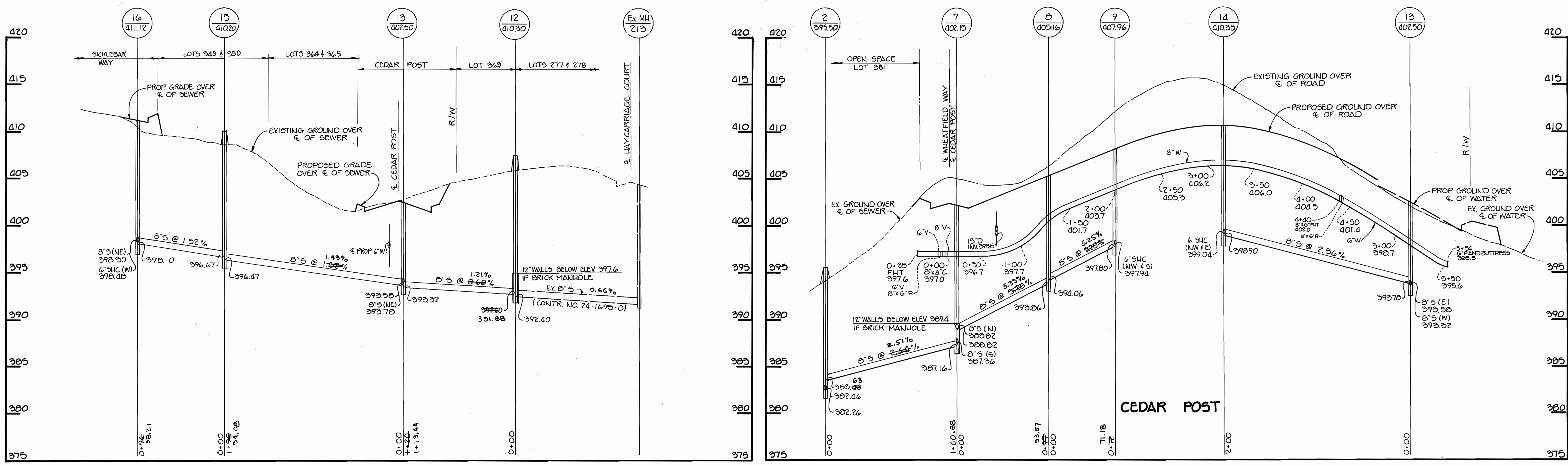
DES. DAM/JH	G.L. 1	8" W 1' C STA. 3+80 LOWERED	10-7-93
DRN. JH			
CHK.			
DATE 10-4-88			
BY	NO.	REVISIONS	DATE

PROFILE OF WATER AND SEWER MAINS

600' SCALE MAP NO. 30 BLOCK NO. 6

LONG GATE
 SECTION 3, AREA 1
 ELECTION DISTRICT NO. 2
 CONTRACT NO. 24-1763-D

SCALE AS SHOWN
 SHEET 2 OF 3



PROFILES
SCALE: HORIZ. 1" = 50'
VERT. 1" = 5'

DEPARTMENT OF PUBLIC WORKS
HOWARD COUNTY, MARYLAND

TRACY, SCHULTE
& ASSOCIATES INC.
planning architecture engineering
8480 Baltimore National Pike Suite 418
Ellicott City, Maryland 21043



DES: DAM	
DRN: JH	
CHK:	
DATE: 10-4-88	
EJS	CHANGED LOT NUMBERS
BY NO.	REVISION
	DATE

PROFILES OF
WATER AND SEWER MAINS

LONG GATE
SECTION 3, AREA 1
ELECTION DISTRICT NO. 2
CONTRACT NO. 24-1763-D

SCALE AS SHOWN
SHEET 3 OF 3

AS-BUILT 2/5/92