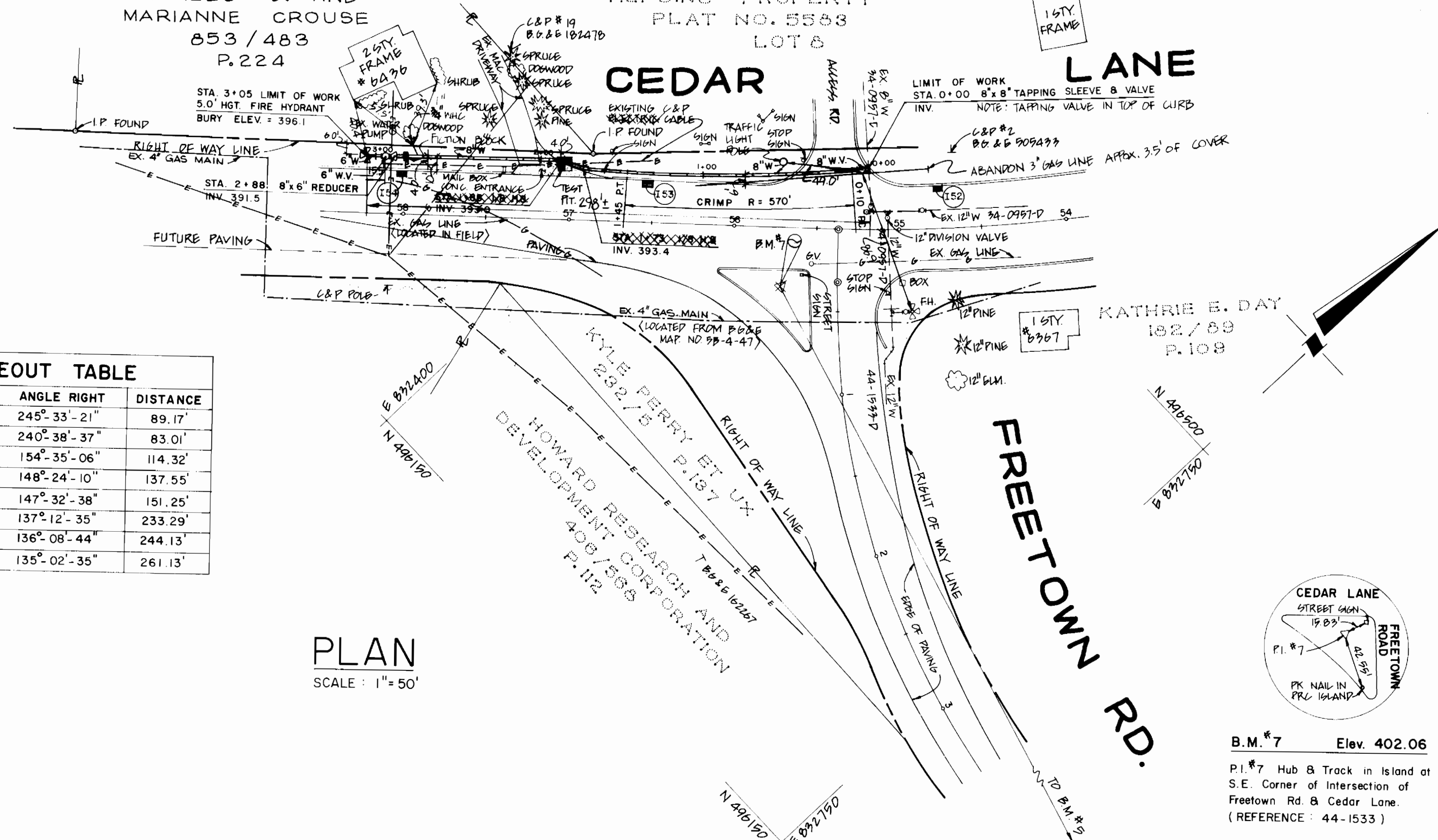


CHARLES J. AND
MARIANNE CROUSE
853 / 483
P.224

HEPDING PROPERTY
PLAT NO. 5588
LOT 8

CEDAR LANE



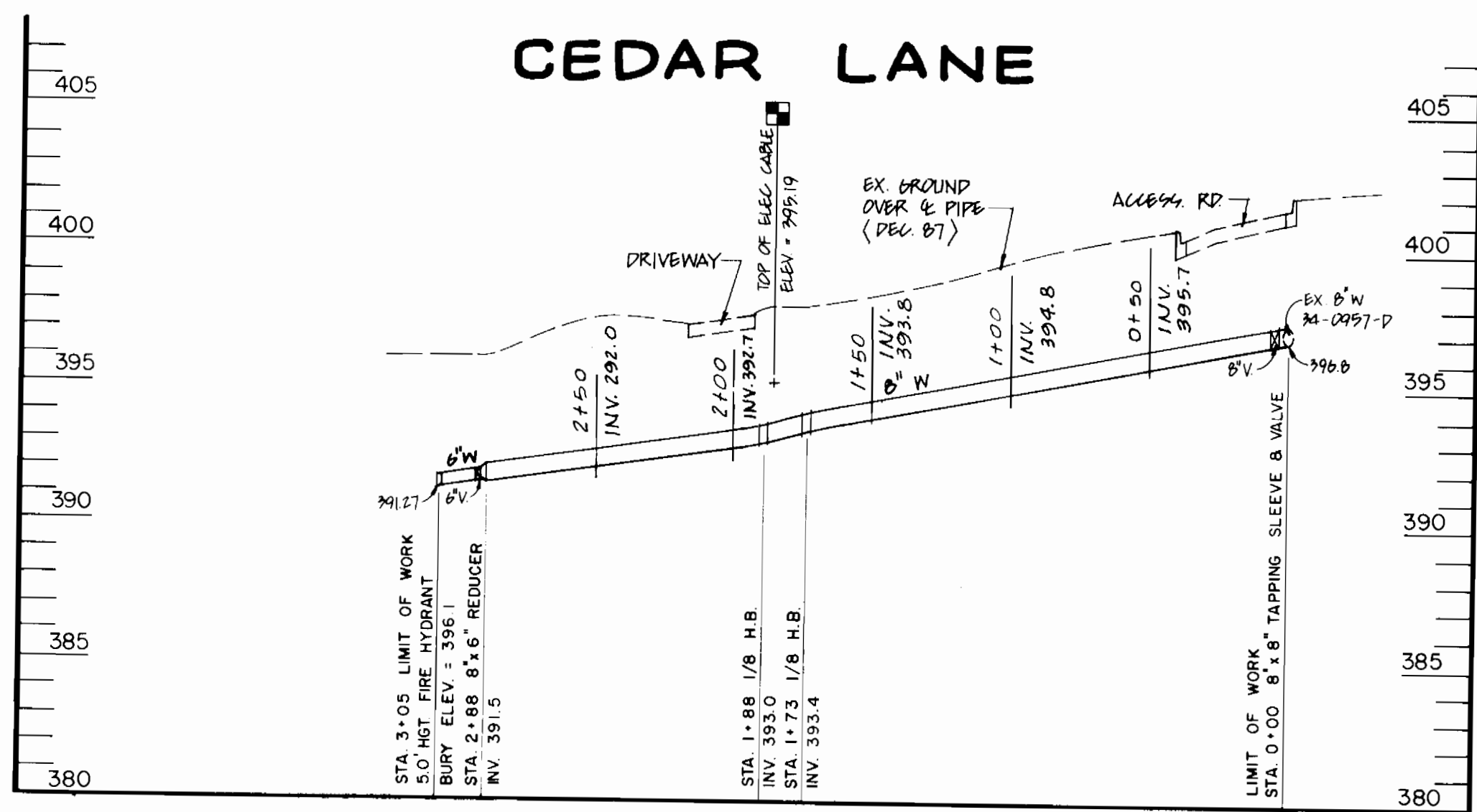
WATER MAIN STAKEOUT TABLE

STATION/APPROX.	INST. AT	BACKSIGHT	ANGLE RIGHT	DISTANCE	
0+00	8"x8" T.S. & V.	B.M.#7	B.M.#5	245°-33'-21"	89.17'
0+10	P.C.	B.M.#7	B.M.#5	240°-38'-37"	83.01'
1+45	P.T.	B.M.#7	B.M.#5	154°-35'-06"	114.32'
1+73	1/8" H.B.	B.M.#7	B.M.#5	148°-24'-10"	137.55'
1+88	1/8" H.B.	B.M.#7	B.M.#5	147°-32'-38"	151.25'
2+75	3/4" W.H.C.	B.M.#7	B.M.#5	137°-12'-35"	233.29'
2+88	8"x6" REDUCER	B.M.#7	B.M.#5	136°-08'-44"	244.13'
3+05	5.0' HGT. F.H.	B.M.#7	B.M.#5	135°-02'-35"	261.13'

PLAN
SCALE: 1" = 50'

RESTORATION SCHEDULE

STATION	MATERIAL
0+00 TO 0+45	BITUMINOUS CONCRETE
0+45 TO 1+88	SOD
1+88 TO 2+00	CONCRETE
2+00 TO 2+13	BITUMINOUS CONCRETE
2+13 TO 3+05	SOD



PROFILE
SCALE: HOR 1" = 50'
VER. 1" = 5'

SEDIMENT CONTROL NOTES

- SEDIMENT CONTROL APPROVAL IS PREDICATED ON DAILY BACKFILLING OF ALL OPEN TRENCHES.
- PROVISIONS SHALL BE MADE FOR DAILY CLEANUP OF ANY SEDIMENT THAT ACCUMULATES ON THE PUBLIC RIGHT-OF-WAY.

SEDIMENT CONTROL MEASURES FOR THIS CONTRACT WILL BE IMPLEMENTED IN ACCORDANCE WITH SECTION 219 OF THE HOWARD COUNTY DESIGN MANUAL VOLUME IV - STANDARD SPECIFICATIONS AND DETAILS FOR CONSTRUCTION, AND THE 1983 MARYLAND STANDARDS AND SPECIFICATIONS FOR SOIL EROSION AND SEDIMENT CONTROL.

REVIEWED FOR HOWARD COUNTY SOIL CONSERVATION DISTRICT AND MEETS TECHNICAL REQUIREMENTS
APPROVED:

U.S. SOIL CONSERVATION SERVICE DATE

THIS PLAN IS APPROVED FOR EROSION AND SEDIMENT CONTROL BY THE HOWARD COUNTY SOIL CONSERVATION DISTRICT.
APPROVED:

HOWARD COUNTY SOIL CONSERVATION DISTRICT DATE

PLAN REFERENCE:

WATER PLAN - CONTRACT NO. 34-0957-D
- CAPITAL PROJECT NO. W-8147, CONTRACT NO. 44-1533
ROAD PLAN - CAPITAL PROJECT NO. J-4062

DEPARTMENT OF PUBLIC WORKS
HOWARD COUNTY, MARYLAND

APPROVED: *[Signature]* 8/1/89
DIRECTOR OF PUBLIC WORKS DATE

APPROVED: *[Signature]* 1-21-88
CHIEF, BUREAU OF UTILITIES DATE

PREPARED BY
HOWARD COUNTY, MARYLAND
DEPARTMENT OF PUBLIC WORKS
BUREAU OF ENGINEERING
SURVEY/DRAFTING DIVISION
11226 ROUTE 216
LAUREL, MARYLAND 20707



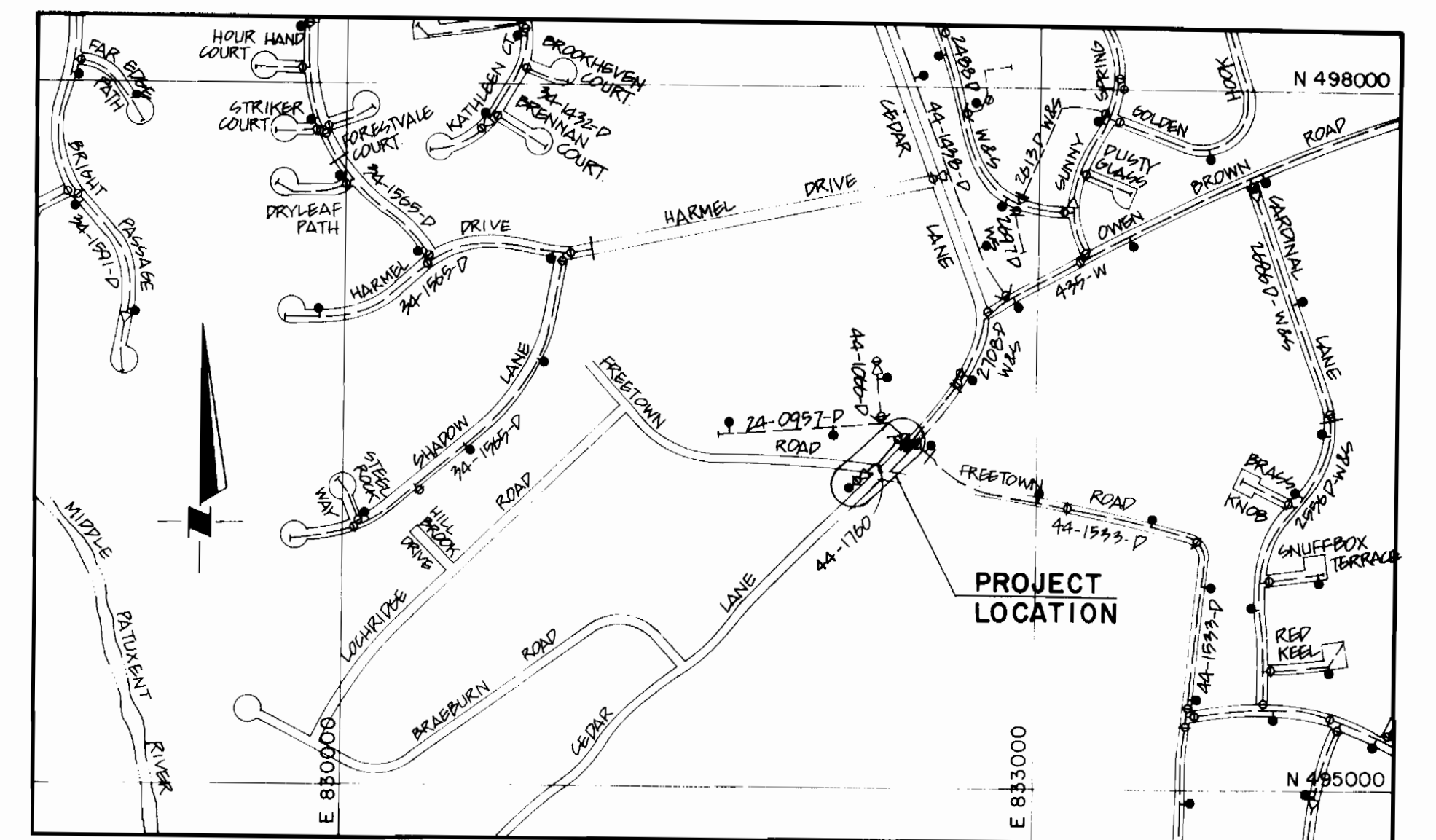
DES: M.H.	
DRN: Y.P.	
CHK: M.H.	
DATE: 7/21/88	
BY NO.	
REVISION	
DATE	

PLAN AND PROFILE

600' SCALE MAP NO. 35 BLOCK NO. 17

**ROUTINE WATER EXTENSION
CEDAR LANE**
CAPITAL PROJECT NO. W-8688
CONTRACT NO. 44-1760
ELECTION DISTRICT NO. 5
HOWARD COUNTY, MARYLAND

SCALE AS SHOWN
SHEET 1 OF 1



TYPE OF BUILDINGS	RESIDENTIAL
NUMBER OF PARCELS	1
NUMBER OF HOUSE CONNECTIONS	1
DRAINAGE AREA	N/A

VICINITY MAP
SCALE: 1" = 600'

WATER CODE E28
FOR COUNTY USE ONLY

GENERAL NOTES

- APPROXIMATE LOCATION OF EXISTING MAINS ARE SHOWN. THE CONTRACTOR SHALL TAKE ALL NECESSARY PRECAUTIONS TO PROTECT EXISTING MAINS AND SERVICES AND MAINTAIN UNINTERRUPTED SUPPLY ANY DAMAGE INCURRED SHALL BE REPAIRED IMMEDIATELY TO THE SATISFACTION OF THE ENGINEER AT THE CONTRACTOR'S EXPENSE.
- ALL HORIZONTAL CONTROLS ARE BASED ON MARYLAND STATE COORDINATES.
- ALL VERTICAL CONTROLS ARE BASED ON U.S.G.S. DATUM.
- ALL PIPE ELEVATIONS SHOWN ARE INVERT ELEVATIONS.
- CLEAR ALL UTILITIES BY A MINIMUM OF 6"
- FOR DETAILS NOT SHOWN ON THE DRAWINGS, AND FOR MATERIALS AND CONSTRUCTION METHODS, USE HOWARD COUNTY DESIGN MANUAL, VOLUME IV STANDARD SPECIFICATIONS AND DETAILS FOR CONSTRUCTION. THE CONTRACTOR SHALL HAVE A COPY OF VOLUME IV ON THE JOB.
- WHERE TEST PITS HAVE BEEN MADE ON EXISTING UTILITIES, THEY ARE NOTED BY THE SYMBOL [] AT THE LOCATION OF THE TEST PIT. A NOTE OR NOTES CONTAINING THE RESULTS OF THE TEST PIT OR PITS IS INCLUDED ON THE DRAWING. EXISTING UTILITIES IN THE VICINITY OF THE PROPOSED WORK FOR WHICH TEST PITS HAVE NOT BEEN DUG SHALL BE LOCATED BY THE CONTRACTOR TWO WEEKS IN ADVANCE OF CONSTRUCTION OPERATIONS AT HIS OWN EXPENSE.
- CONTRACTOR SHALL NOTIFY THE FOLLOWING UTILITIES OR AGENCIES AT LEAST FIVE WORKING DAYS BEFORE STARTING WORK SHOWN ON THESE PLANS:
 - STATE HIGHWAY ADMINISTRATION 531-5533
 - BALTIMORE GAS & ELECTRIC COMPANY CONTRACTOR SERVICES 850-4620
 - BALTIMORE GAS & ELECTRIC COMPANY UNDER GROUND DAMAGE CONTROL 859-9004
 - BALTIMORE GAS & ELECTRIC COMPANY TROUBLE SHOOTING 298-9001
 - MISS UTILITY 1-800-257-7777
 - COLONIAL PIPE LINE COMPANY 795-1390
 - BUREAU OF UTILITIES, HOWARD COUNTY DEPARTMENT OF PUBLIC WORKS 992-2366
 - CHESAPEAKE & POTOMAC (C&P) TELEPHONE COMPANY 1-800-257-7777
- TREES AND SHRUBS ARE TO BE PROTECTED FROM DAMAGE TO MAXIMUM EXTENT. TREES AND SHRUBS LOCATED WITHIN THE CONSTRUCTION STRIP ARE NOT TO BE REMOVED OR DAMAGED BY THE CONTRACTOR.
- CONTRACTOR SHALL REMOVE TREES, STUMPS AND ROOTS ALONG LINE OF EXCAVATION. PAYMENT FOR SUCH REMOVAL SHALL BE INCLUDED IN THE UNIT PRICE BID FOR CONSTRUCTION OF THE MAIN.
- ALL WATER MAINS TO BE D.I.P. CLASS 52 UNLESS OTHERWISE NOTED.
- TOP OF ALL WATER MAINS TO HAVE A MINIMUM OF 3/2' COVER UNLESS OTHERWISE NOTED.
- VALVES ADJACENT TO TEES SHALL BE STRAPPED TO TEES.
- ALL FITTINGS SHALL BE BUTTRESSED OR ANCHORED WITH CONCRETE IN ACCORDANCE WITH THE STANDARD DETAILS UNLESS OTHERWISE PROVIDED FOR ON THE DRAWINGS.
- FIRE HYDRANTS SHALL BE SET TO THE BURY LINE ELEVATIONS SHOWN ON THE DRAWINGS. ALL FIRE HYDRANTS SHALL BE STRAPPED AND BUTTRESSED WITH CONCRETE IN ACCORDANCE WITH THE STANDARD DETAILS SOIL AROUND THE FIRE HYDRANTS SHALL BE COMPACTED IN ACCORDANCE WITH SECTION 1003 OF THE STANDARD SPECIFICATIONS.
- THE CONTRACTOR SHALL NOT OPERATE ANY WATER MAIN VALVES ON THE EXISTING WATER SYSTEM.
- ALL WATER HOUSE CONNECTIONS SHALL BE FOR INSIDE METER SETTING, UNLESS OTHERWISE NOTED ON THE DRAWINGS OR IN THE SPECIFICATION.
- T.B. DENOTES TEST (SOIL) BORING.

QUANTITIES

ITEM	BID	AS-BUILT	MATERIAL	SUPPLIER
8" WATER PIPE	288 LF	283 LF	GRIFPIN	MEL
6" WATER PIPE	17 LF	15 LF	GRIFPIN	MEL
1 3/4" W.H.C.	6 LF	6 LF		MEL
8"x8" T.S. & V.	1	1	M-H	MEL
8"-1/8" H.B.	2	0	N/A	MEL
8"x6" REDUCER	1	1	TYLER	MEL
8" WATER VALVE	1	1		MEL
6" WATER VALVE	1	1	M-H	MEL
FIRE HYDRANT	1	1	M-H	MEL

AS-BUILT 3/13/89