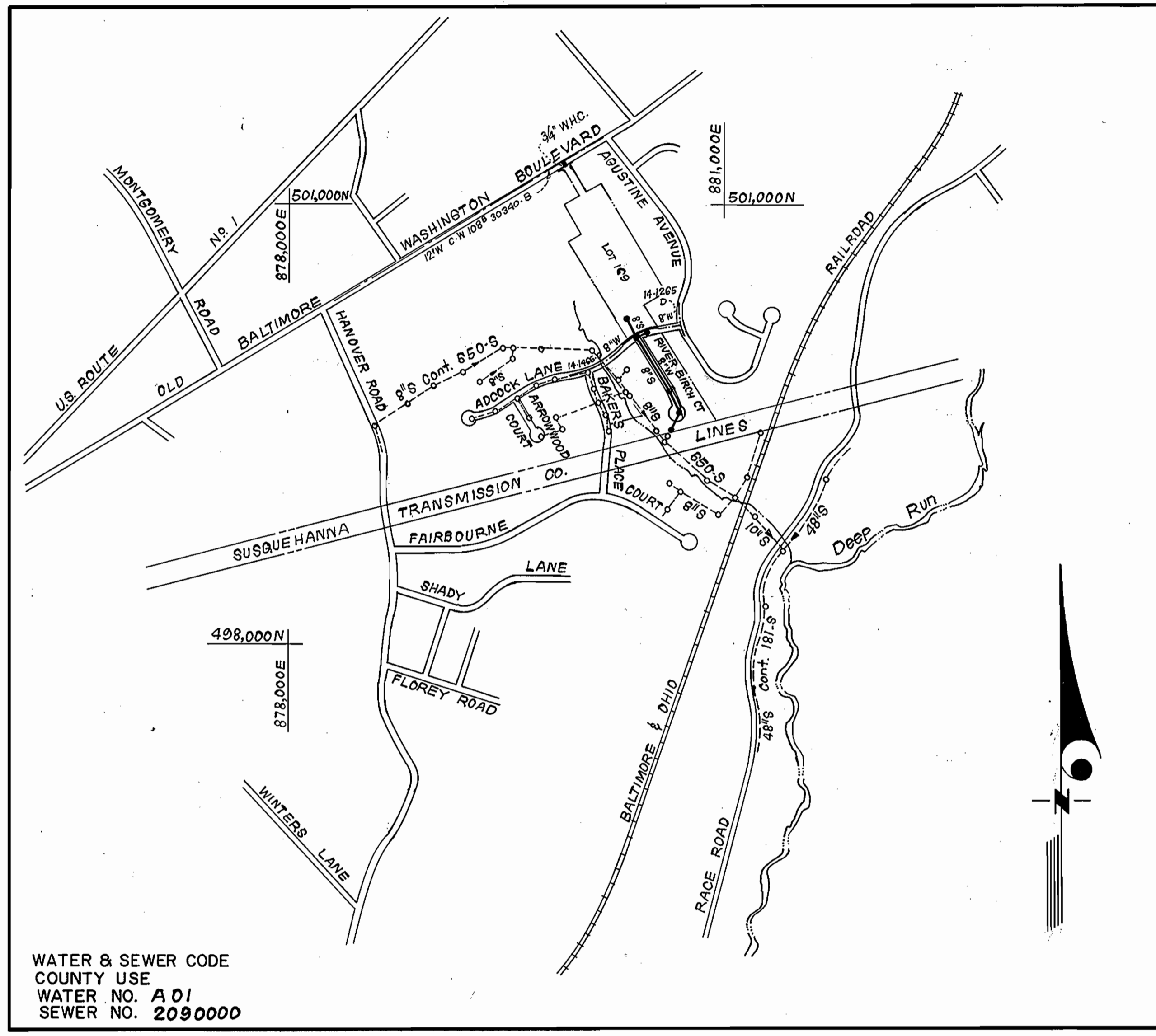


SEWER HOUSE CONNECTION TABLE					
LOTS	Inv. @ E	Min C.	LOTS	Inv. @ E	Min C.
138	73.5	77.3	152	56.6	60.6
139	58.1	61.0	153	59.0	62.6
140	75.4	79.0	154	58.8	62.7
141	68.9	72.3	155 / 156	70.5	74.4 / 74.9
142	74.7	78.4	157 / 158	70.9	76.9 / 74.8
143	88.9	90.6	159 / 160	73.4	77.3 / 77.0
144	74.7	79.1	161 / 162	78.0	81.8 / 81.7
145	68.4	71.5	163 / 164	83.6	87.4 / 87.3
146	60.6	64.6	165	87.8	91.2
147	78.4	82.4	166	92.8	103.5
148	76.1	80.0	167	91.1	94.1
149 / 150	58.8	62.6	168	91.1	94.2
151	71.1	74.7			

TYPE OF BUILDING	Single Family
Nº OF LOTS	32
Nº OF WHO'S	26
Nº OF SHC'S	19
DRAINAGE AREA	Patapsco W.W.T.P.



WATER & SEWER CODE
COUNTY USE
WATER NO. A 01
SEWER NO. 2090000

VICINITY MAP
SCALE: 1" = 600'

GENERAL NOTES

- Approximate location of existing mains are shown. The contractor shall take all necessary precautions to protect existing mains and services and maintain uninterrupted supply. Any damage incurred shall be repaired immediately to the satisfaction of the Inspector, at the contractor's expense.
- All horizontal controls are based on Maryland State Coordinates.
- All vertical controls are based on U.S.G.S. Datum.
- All pipe elevations shown are invert elevations.
- Clear all utilities by a minimum of 6" clear all poles by 2'-0" minimum or tunnel as required. Any cost incurred to the contractor for tunneling or bracing at poles shall be included in unit prices bid for excavation and backfill.
- For details not shown on the drawings use Howard County Standard Details.
- For materials and construction methods use Howard County Standard Specifications & Ho.Co. Design Manual, Volume 12. The contractor shall have Volume IV on the job.
- Contractor shall locate existing utilities a minimum of two (2) weeks in advance of construction operations in the vicinity of proposed utilities at his own expense.
- Contractor shall notify the following utilities or agencies at least five (5) working days before starting work shown on these plans.
State Highway Administration - 531-5533
Baltimore Gas & Electric Company - Contractor Services - 850-4620
Baltimore Gas & Electric Company - Underground Damage Control - 859-9004
Baltimore Gas & Electric Company - Trouble Shooting - 298-9001
"Miss Utility" - 1-559-0100
Chesapeake & Potomac (C & P) Telephone Company - 1-800-257-7777
Colonial Pipeline Company - 795-1380
Bureau of Utilities Howard County - 992-2366
- Trees are to be protected from damage to maximum extent. Trees located within the construction strip are not to be removed or damaged by the contractor.
- Contractor shall remove trees, stumps, and roots along line of excavation as directed by the Inspector. Payment for such removal shall be included in the unit price bid for excavation and backfill.
- Place regulation "Men Working" and warning signs as required to comply with Maryland State Highway Administration Manual of Traffic Control for Highway Construction and Maintenance Operations.
- All water mains to be D.I.P. Class 52 unless otherwise noted.
- Top of all water mains to have a minimum of 3-1/2' cover unless otherwise noted.
- Valves adjacent to tees shall be strapped to tees.
- Block all fittings with concrete.
- Bury line elevations on fire hydrants shall be set to the elevations shown on the drawings. All fire hydrants shall be strapped and buttressed with concrete in accordance with standard details. Soil around the fire hydrant to be compacted in accordance with Sections 1003 & 1009 of the Standard Specifications.
- All water house connections shall be for an inside meter setting.
- The contractor shall not operate any water main valves on the existing system.
- All sewer mains shall be C.S.P.X., V.C.P.X., P.V.C., or A.C.P. Class 2400 unless otherwise noted.
- The contractor shall provide a joint in all sewer mains within 2'-0" of exterior manhole wall.
- All manholes shall be 4'-0" inside diameter, unless otherwise noted.
- Water main and water house connection lines must have a minimum of one foot separation from the sanitary sewer and sewer house connections as they cross. Except at crossings, water and sewer lines shall have a minimum horizontal separation of 10'.
- All DIP fittings shall be in accordance with AWWA specification C-153 Ductile Iron Compact Fittings, 3" through 12" for water and other liquids.

CONTRACT NO. 14-1755-D
CANBURY WOODS
SECTION 2 AREA 2 LOTS 137 THRU 170
HOWARD COUNTY, MARYLAND
DEPARTMENT OF PUBLIC WORKS

QUANTITIES			
ITEM	EST'IMP	AS BUILT	MATERIAL / SUPPLIER
8" W	748 LF	804'	ATLANTIC STATES / A & P
6" W	110 LF	177'	" " / " "
8" S	943 LF	945'	CHARLOTTE PIPE / A & P
6" SHC	410 LF	427'	" " / " "
1" WHC	245 LF	245'	VINCENT BRASS & HALSTEAD / A & P
3/4" WHC	277 LF	280'	" " / " "
F.H.	2 EA	2	MUELLER / A & P
4'-0" DIA. MH	6 EA	6	ATLANTIC / A & P
8" V	1 EA	1	MUELLER / A & P
6" V (exc) FH	1 EA	1	MUELLER / A & P

Sediment Control Measures will be implemented in accordance with Section 219 of the Specifications & with Road Construction Plan F-88-99; Drawing , Sediment & Erosion Control.

REVIEWED FOR HOWARD SOIL CONSERVATION DISTRICT AND MEETS TECHNICAL REQUIREMENT.
Signature: *Janis M. Helms* DATE: 3/1/88

U.S. SOIL CONSERVATION SERVICE
This Development Plan is approved for Soil Erosion and Sediment Control by the Howard Soil Conservation District.

APPROVED:
Signature: *Stephen L. Smith* DATE: 3/1/88
Howard S.C.D.

DEPARTMENT OF PUBLIC WORKS
HOWARD COUNTY, MARYLAND
Signature: *James M. Allen* DATE: 4/18/88
DIRECTOR OF PUBLIC WORKS
Signature: *Robert M. Remier* DATE: 3-4-88
CHIEF, BUREAU OF UTILITIES

CLARK - FINEFROCK & SACKETT
ENGINEERS - PLANNERS - SURVEYORS
7105 MINSTREL WAY - COLUMBIA, MD. 21045
(301) 381-7500-BALTO. (301) 621-8100-WASH.

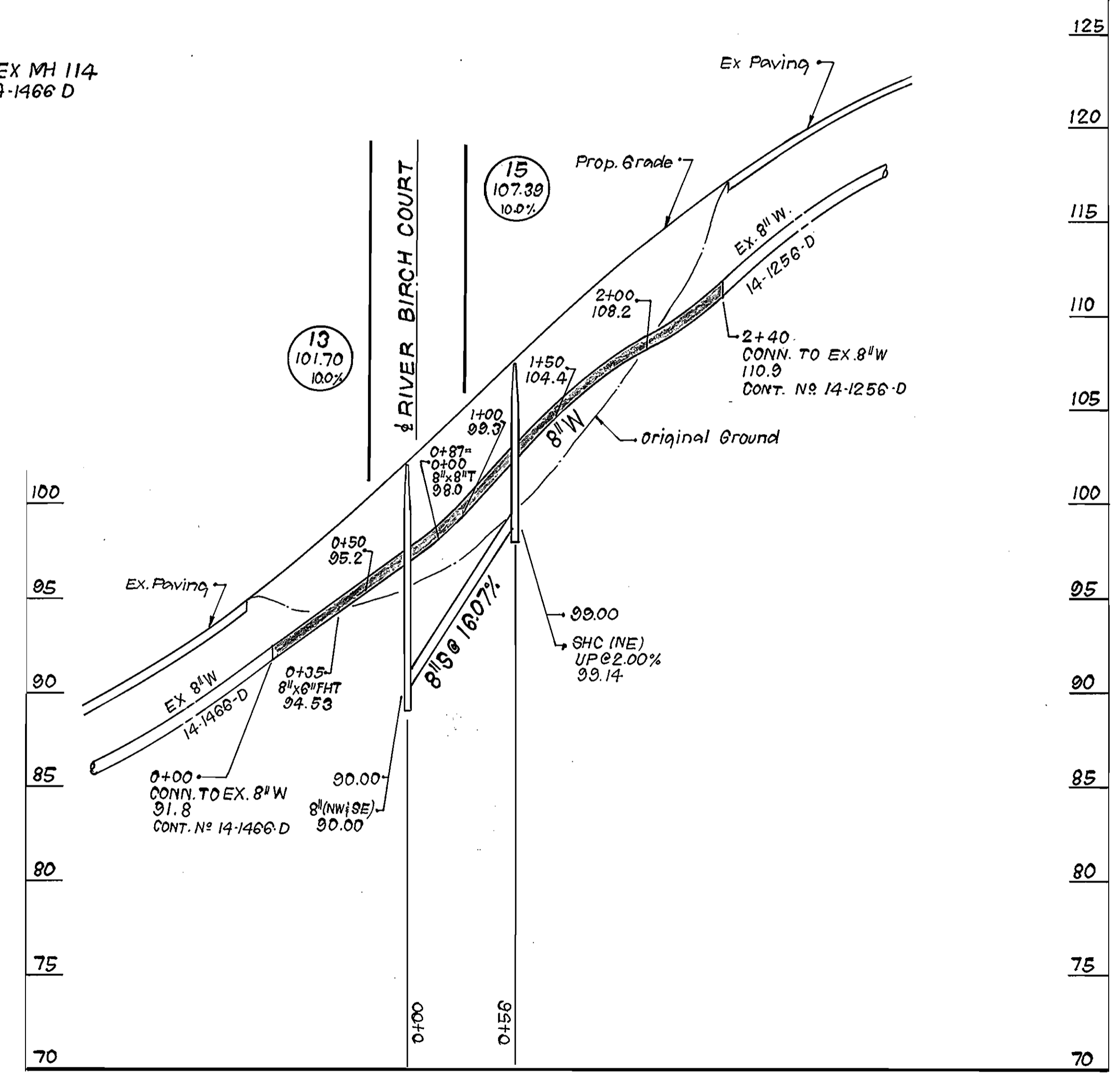
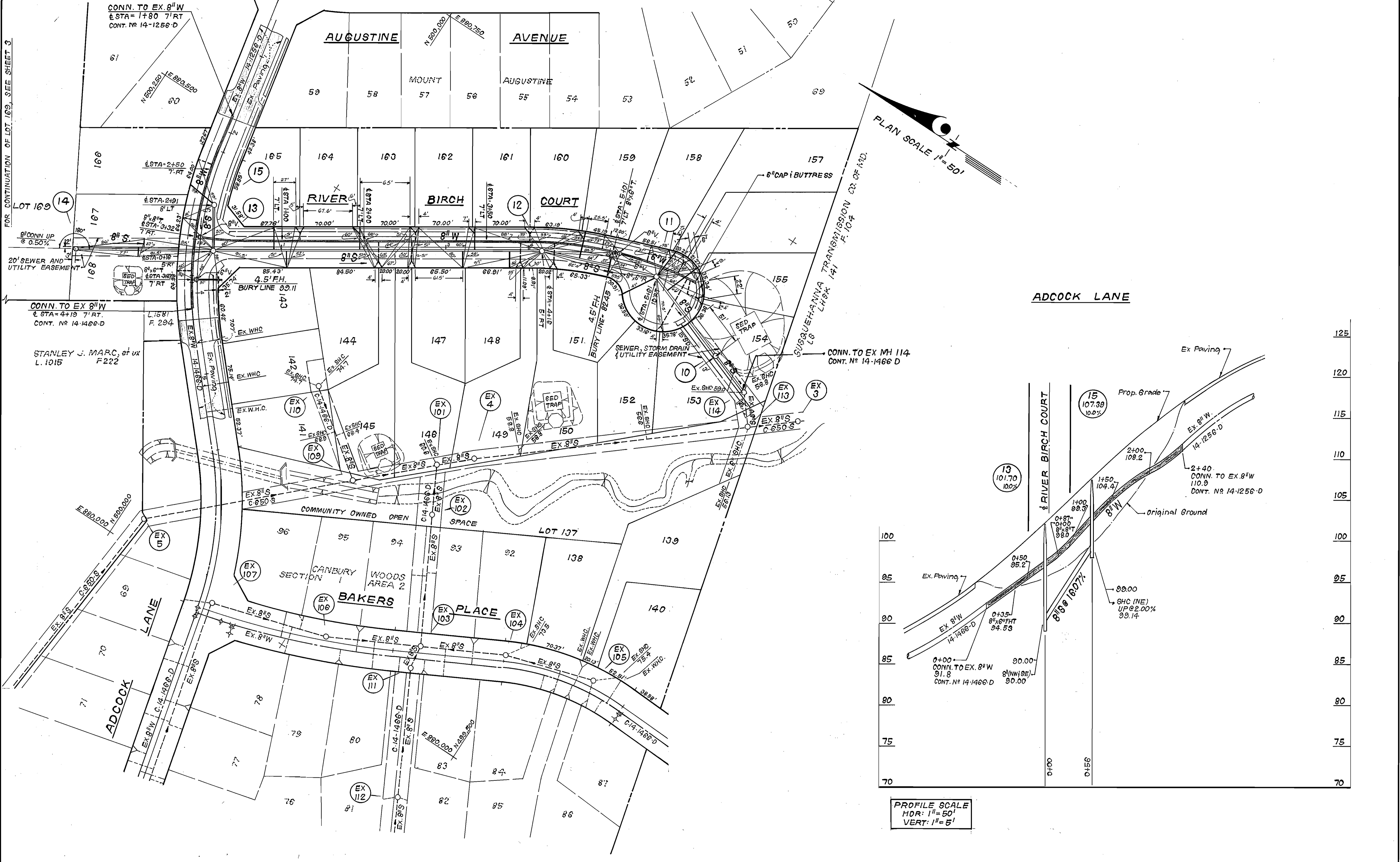


DES: JTR			
DRN: JTR			
CHK: CCM			
DATE: 11-3-87			
BY NO.		REVISION	DATE
		Remove blowoff from Quantities chart	11-9-88

TITLE SHEET
600' SCALE MAP NO. 38 BLOCK NO.

CANBURY WOODS
SECTION 2, AREA 2 LOTS 137 THRU 170
1ST ELECTION DISTRICT
CONTRACT NO. 14-1755-D

SCALE AS SHOWN
SHEET 1 OF 3



PROFILE SCALE
 HOR: 1" = 50'
 VERT: 1" = 5'

DEPARTMENT OF PUBLIC WORKS
 HOWARD COUNTY, MARYLAND

James M. ... 4/18/88
 DIRECTOR OF PUBLIC WORKS DATE

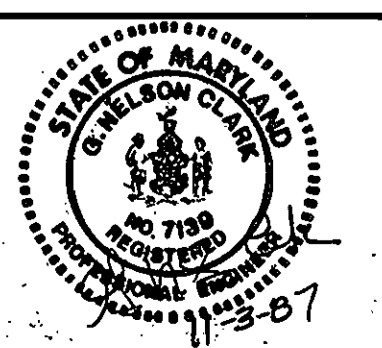
... 3-4-88
 CHIEF, BUREAU OF UTILITIES DATE

... 3-30-88
 CHIEF, BUREAU OF ENGINEERING DATE

... 7-20-88
 CHIEF, LAND DEVELOPMENT DIV. DATE

CFE CLARK · FINEPROCK & SACKETT
 ENGINEERS · PLANNERS · SURVEYORS

7135 MINSTREL WAY · COLUMBIA, MD. 21045
 (301) 381-7500 · BALTO. (301) 621-8100 WASH.



DES: JTR	GS 1	Added SHO to lots 107 & 108 Plan View	5-23-88
DRN: JTR	GS 2	Delete 3" Blowoff at end of River Birch Ct.	11-9-88
CHK: OCM			
DATE: 11-3-87			
BY: NO.		REVISION	DATE

PLAN AND PROFILES OF
 WATER & SEWER MAINS

600' SCALE MAP NO. 38 BLOCK NO.

CANBURY WOODS
 SECTION 2, AREA 2 LOTS 137 THRU 170
 1ST ELECTION DISTRICT
 CONTRACT NO. 14-1755-D

SCALE AS SHOWN
 SHEET 2 OF 3

