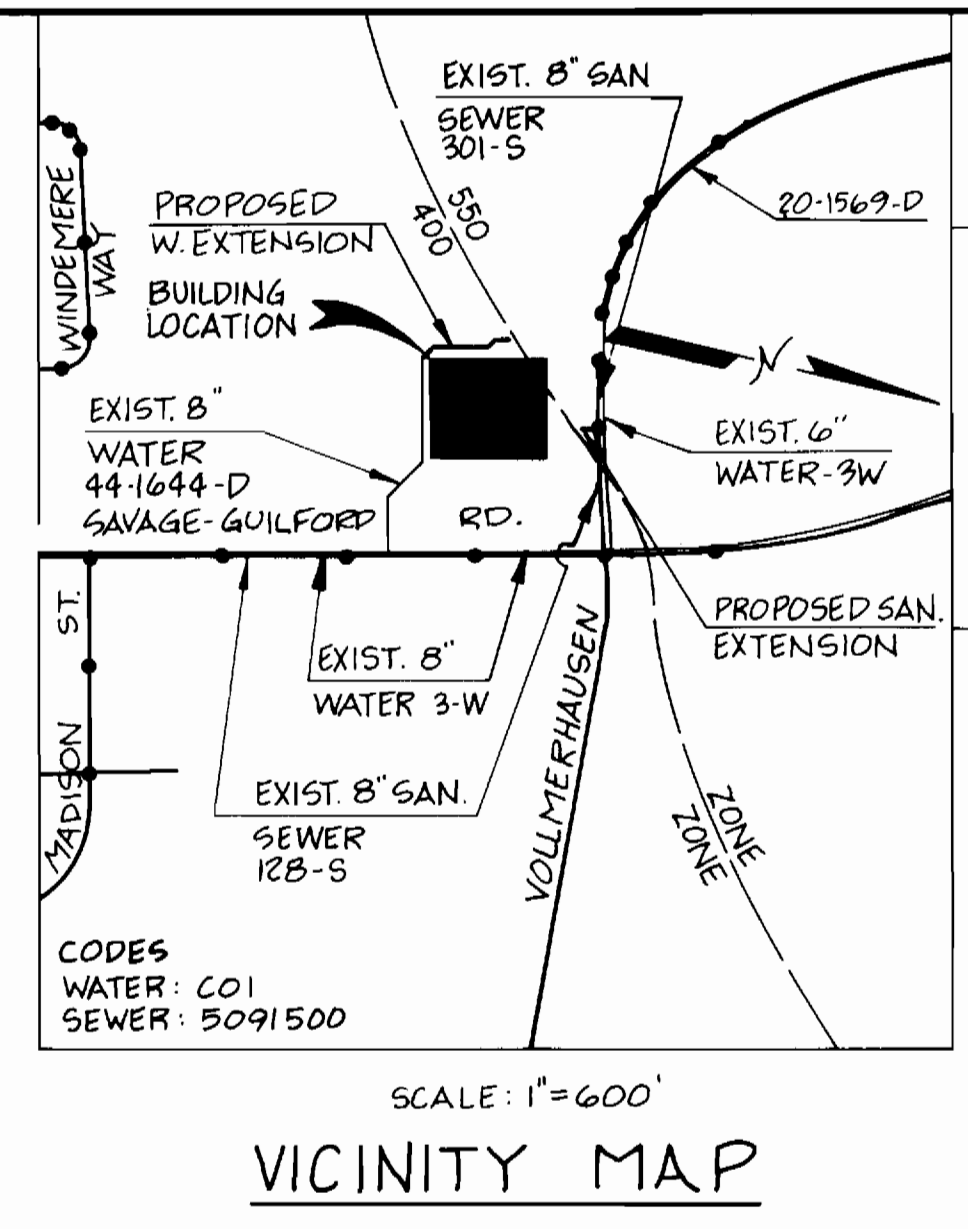


PLAN
SCALE: 1"=50'

LIST OF MATERIALS	
ITEM	QUANTITY
WATER	
8" x 6" TEE	2 EA.
6" VALVE	2 EA.
8" x 4" TEE	1 EA.
8" CAP & BLOCK	1 EA.
FIRE HYDRANT	1 EA.
4" VALVE	1 EA.
8" 1/8" HB	6 EA.
8" W. MAIN	310 L.F.
6" W. MAIN	45 L.F.
4" W. MAIN	6 L.F.
W 3/4" W	1 EA.
6" METER	1 EA.
DETECTOR CHECK	1 EA.
SEWER	
8" SAN PIPE	42 L.F.

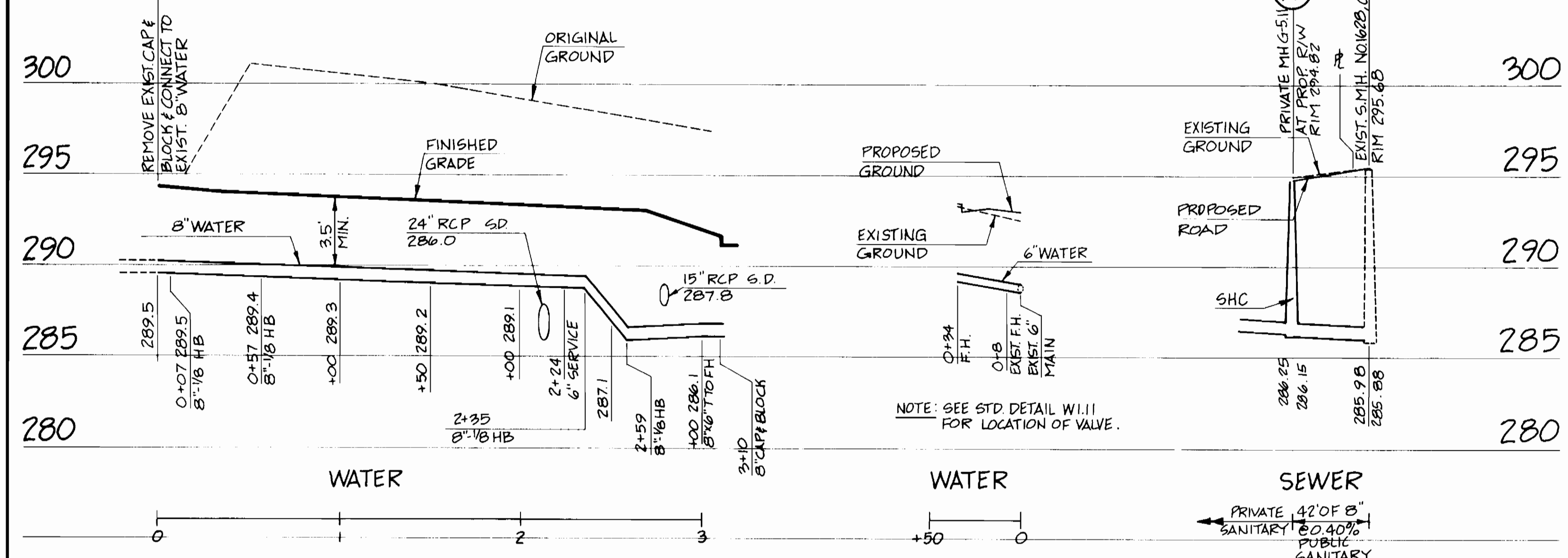


WATER AND SEWER CODES
Water: C01
Sewer: 5091500

GENERAL SITE INFO.
Number of Lots: 1
Building Type: School
Number of WHCs: 1
Number of SHCs: 1
Drainage Area: Little Patuxent

GENERAL NOTES

- APPROXIMATE LOCATION OF EXISTING MAINS ARE SHOWN. THE CONTRACTOR SHALL TAKE ALL NECESSARY PRECAUTIONS TO PROTECT EXISTING MAINS AND SERVICES AND MAINTAIN UNINTERRUPTED SUPPLY. ANY DAMAGE INCURRED SHALL BE REPAIRED IMMEDIATELY TO THE SATISFACTION OF THE ENGINEER AT THE CONTRACTOR'S EXPENSE.
- ALL HORIZONTAL CONTROLS ARE BASED ON MARYLAND STATE COORDINATES.
- ALL VERTICAL CONTROLS ARE BASED ON U.S.G.S. DATA.
- ALL PIPE ELEVATIONS SHOWN ARE INVERT ELEVATIONS.
- CLEAR ALL UTILITIES BY A MINIMUM OF 6". CLEAR ALL POLES BY A MINIMUM OF 2'-0" OR TUNNEL AS REQUIRED. THE OWNER HAS CONTACTED THE UTILITY COMPANIES AND HAS MADE ARRANGEMENTS FOR BRACING OF POLES AS SHOWN ON THE DRAWINGS. IN THE EVENT THE CONTRACTOR'S WORK REQUIRES THE BRACING OF ADDITIONAL POLES, ANY COST INCURRED BY THE OWNER FOR THE BRACING OF ADDITIONAL POLES OR DAMAGES SHALL BE DEDUCTED FROM MONEY OWED THE CONTRACTOR. THE CONTRACTOR SHALL COORDINATE WITH THE UTILITY COMPANIES TO SCHEDULE THE BRACING OF POLES.
- FOR DETAILS NOT SHOWN ON THE DRAWINGS, AND FOR MATERIALS AND CONSTRUCTION METHODS, USE HOWARD COUNTY DESIGN MANUAL, VOLUME IV, STANDARD SPECIFICATIONS AND DETAILS FOR CONSTRUCTION. THE CONTRACTOR SHALL HAVE A COPY OF VOLUME IV ON THE JOB.
- WHERE TEST PITS HAVE BEEN MADE ON EXISTING UTILITIES, THEY ARE NOTED BY THE SYMBOL AT THE LOCATION OF THE TEST PIT. A NOTE OR NOTES CONTAINING THE RESULTS OF THE TEST PIT OR PITS IS INCLUDED ON THE DRAWINGS. EXISTING UTILITIES IN THE VICINITY OF THE PROPOSED WORK FOR WHICH TEST PITS HAVE NOT BEEN DUG SHALL BE LOCATED BY THE CONTRACTOR TWO WEEKS IN ADVANCE OF CONSTRUCTION OPERATIONS AT HIS OWN EXPENSE.
- CONTRACTOR SHALL NOTIFY THE FOLLOWING UTILITY COMPANIES OR AGENCIES AT LEAST FIVE WORKING DAYS BEFORE STARTING WORK SHOWN ON THESE PLANS:
STATE HIGHWAY ADMINISTRATION 591-5533
BALTIMORE GAS & ELECTRIC CO. 850-4620
CONTRACTOR SERVICES 859-9004
UNDERGROUND DAMAGE CONTROL 298-9001
TROUBLE SHOOTING 1-559-0100
MISS UTILITY 795-1390
COLONIAL PIPELINE CO.
BUREAU OF UTILITIES
HOWARD COUNTY DEPARTMENT OF PUBLIC WORKS 992-2966
- TREES AND SHRUBS ARE TO BE PROTECTED FROM DAMAGE TO MAXIMUM EXTENT. TREES AND SHRUBS LOCATED WITHIN THE CONSTRUCTION STRIP ARE NOT TO BE REMOVED OR DAMAGED BY THE CONTRACTOR.
- CONTRACTOR SHALL REMOVE TREES, STUMPS AND ROOTS ALONG LINE OF EXCAVATION. PAYMENT FOR SUCH REMOVAL SHALL BE INCLUDED IN THE UNIT PRICE BID FOR CONSTRUCTION OF THE MAIN.



ON-SITE WATER AND SANITARY SEWER MAINS PROFILE

SCALE: HORIZ. 1"=50'
VERT. 1"=5'

LEGEND

- HB HORIZONTAL BEND
- S.D. STORM DRAIN
- R.C.P. REINFORCED CONCRETE PIPE
- T TEE
- F.H. FIRE HYDRANT
- S.M.H. SANITARY MANHOLE
- S.H.C. SEWER HOUSE CONNECTION

Plot No.: 24-1754-D-1-2 Plan No. C 1-3 of 14 SDP-88-50
Howard Soil Conservation District:
Reviewed for Howard Soil Conservation District and meets technical requirements.
U.S. Soils Conservation Service: 3/1/88 Date
This plan is approved for soil erosion and sediment control by the Howard Soil Conservation District.
Stephen J. Fisher 3/2/88 Date
Howard Soil Conservation District

Sediment control measures for this contract will be implemented in accordance with Section 219 of the Specification and as shown on this plan and as shown on SDP-88-50.
Owner-Developer:
Howard County Board of Education
10910 Route 108
Ellicott City, MD 21043
(301) 992-0500

DEPARTMENT OF PUBLIC WORKS
HOWARD COUNTY, MARYLAND
Director of Public Works: 3/9/88 DATE
Chief, Bureau of Engineering: 3/9/88 DATE
Chief, Bureau of Utilities: 3/1/88 DATE
Chief, Land Development Div.: 3/2/88 DATE

WATER MAIN AND SANITARY SEWER EXTENSIONS
TO SERVE
PATUXENT VALLEY MIDDLE SCHOOL
PARCEL 25 TAX MAP 47
SIXTH ELECTION DISTRICT

PLAN AND PROFILE OF A
WATER MAIN AND SANITARY SEWER
600' SCALE MAP NO. 47 BLOCK NO.

CONTRACT NO. 24-1754-D
REVISIONS

HANKINS & ANDERSON
CONSULTING ENGINEERS
1604 SANTA ROSA ROAD
RICHMOND, VIRGINIA 23288
(804) 285-4171
DATE: 25 FEB 1988
SCALE: AS NOTED
JOB NO.
DRAWING NO. 1 of 1