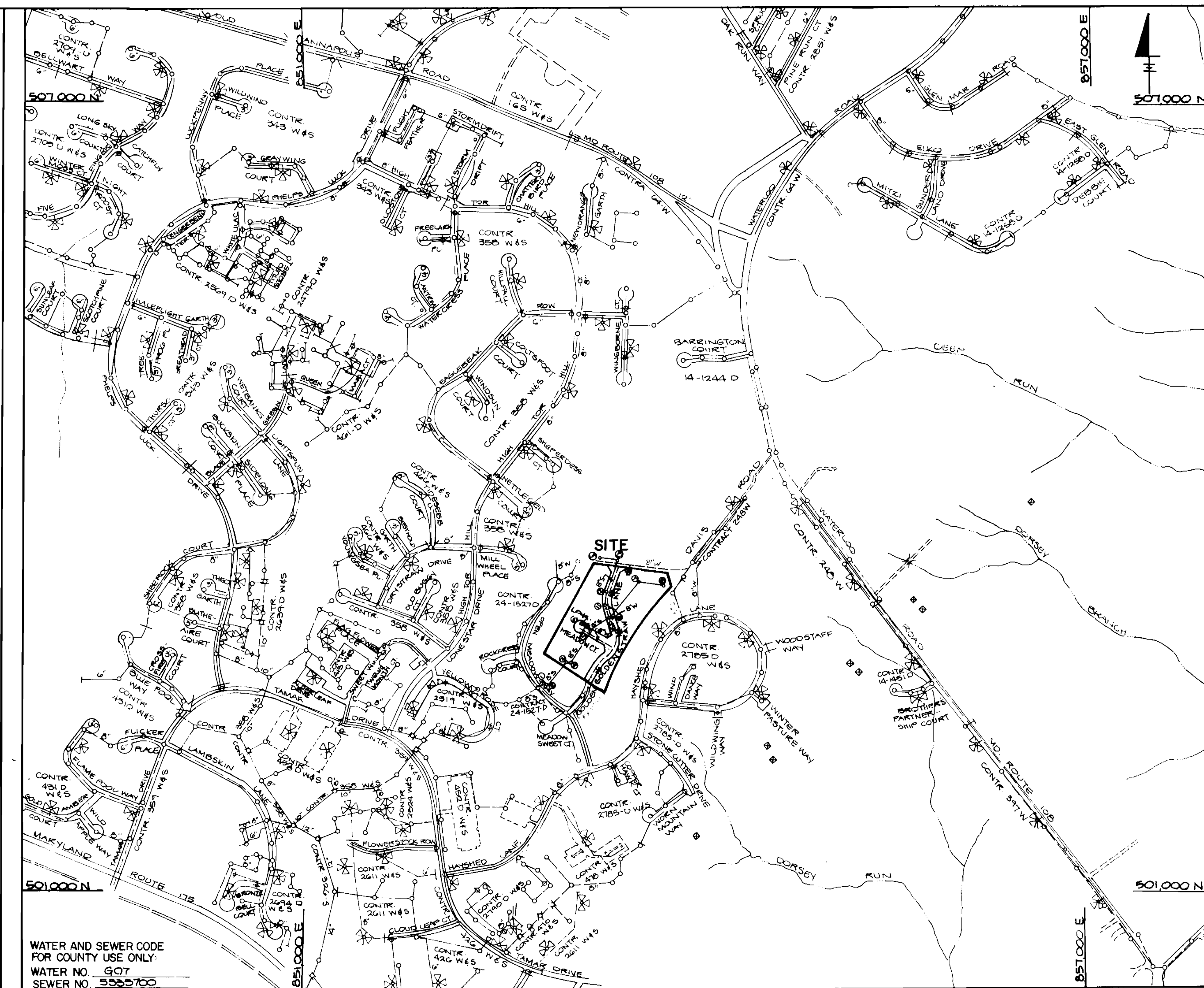


QUANTITIES			
ITEM	EST'D	AS BUILT	SUPPLIER
8" WATER	1720 L.F.	1953	DIP Atlantic C-52 States
6" WATER	O.L.F.	55	"
3/4" W.H.C.	780 L.F.	850	Fytek Munici pal
2" D.I.P. SEWER	107 L.F.	N/A	N/A
FIRE HYDRANTS	5 EA.	5	Kennedy Munici pal
8" SEWER	1751 L.F.	1926	PVC SDP35 National
MAN HOLES	14 EA.	14	Atlantic States
4" SHC	645 L.F.	685	PVC SDP35 National
8" VALVES	4 EA.	5	M Gate Valve Munici pal
6" VALVES	5 EA.	5	"
8" TEE	5 EA.	5	"
8" TEE	1 EA.	1	"
8" CROSS	1 EA.	1	"



TYPE OF BUILDING	SINGLE FAMILY
NUMBER OF LOTS	80
NO. OF WATER HOUSE CONNECTIONS	210
NO. OF SEWER HOUSE CONNECTIONS	210
DRAINAGE AREA	LITTLE PATUXENT

SCALE: 1" = 600'

- ### GENERAL NOTES
- APPROXIMATE LOCATION OF EXISTING MAINS ARE SHOWN. THE CONTRACTOR SHALL TAKE ALL NECESSARY PRECAUTIONS TO PROTECT EXISTING MAINS AND SERVICES AND MAINTAIN UNINTERRUPTED SUPPLY. ANY DAMAGE INCURRED SHALL BE REPAIRED IMMEDIATELY TO THE SATISFACTION OF THE ENGINEER, AT THE CONTRACTOR'S EXPENSE.
 - ALL HORIZONTAL CONTROLS ARE BASED ON MARYLAND STATE COORDINATES.
 - ALL VERTICAL CONTROLS ARE BASED ON U. S. G. S. DATUM.
 - ALL PIPE ELEVATIONS SHOWN ARE INVERT ELEVATIONS.
 - CLEAR ALL UTILITIES BY A MINIMUM OF 6". CLEAR ALL POLES BY 2'-0" MINIMUM OR TUNNEL AS REQUIRED. ANY COST INCURRED TO THE CONTRACTOR FOR TUNNELING OR BRACING AT POLES SHALL BE INCLUDED IN UNIT PRICES BID FOR CONSTRUCTION OF THE MAIN.
 - FOR DETAILS NOT SHOWN ON THE DRAWINGS USE HOWARD COUNTY STANDARD DETAILS.
 - CONTRACTOR SHALL LOCATE EXISTING UTILITIES A MINIMUM OF TWO (2) WEEKS IN ADVANCE OF CONSTRUCTION OPERATIONS IN THE VICINITY OF PROPOSED UTILITIES AT HIS OWN EXPENSE.
 - CONTRACTOR SHALL NOTIFY THE FOLLOWING UTILITIES OR AGENCIES AT LEAST FIVE (5) WORKING DAYS BEFORE STARTING WORK SHOWN ON THESE PLANS.
 - STATE HIGHWAY ADMINISTRATION 531-5533
 - BALTIMORE GAS AND ELECTRIC COMPANY - UNDERGROUND ELECTRIC DISTRIBUTION CUSTOMER SERVICE 685-0123
 - BALTIMORE GAS AND ELECTRIC COMPANY - UNDERGROUND GAS DISTRIBUTION CUSTOMER SERVICE 685-0123
 - ENGINEERING - "DAMAGE CONTROL" 234-5611
 - "MISS UTILITY" 1-559-0100
 - CHESAPEAKE & POTOMAC (C&P) TELEPHONE COMPANY 725-9976
 - AMERICAN TELEPHONE AND TELEGRAPH - CABLE LOCATION DIVISION 393-3533
 - COLONIAL PIPELINE COMPANY 795-1390
 - BUREAU OF UTILITIES HOWARD COUNTY 992-2366
 - TREES ARE TO BE PROTECTED FROM DAMAGE TO MAXIMUM EXTENT. TREES LOCATED WITHIN THE CONSTRUCTION STRIP ARE NOT TO BE REMOVED OR DAMAGED BY THE CONTRACTOR.
 - CONTRACTOR SHALL REMOVE TREES, STUMPS, AND ROOTS ALONG LINE OF EXCAVATION AS DIRECTED BY THE ENGINEER. PAYMENT FOR SUCH REMOVAL SHALL BE INCLUDED IN THE UNIT PRICE BID FOR CONSTRUCTION OF THE MAIN.
 - PLACE REGULATION "MEN WORKING" AND WARNING SIGNS AS REQUIRED TO COMPLY WITH MARYLAND STATE HIGHWAY ADMINISTRATION MANUAL OF TRAFFIC CONTROL FOR HIGHWAY CONSTRUCTION AND MAINTENANCE.
 - ALL WATER MAINS TO BE D.I.P. CLASS 52 UNLESS OTHERWISE NOTED.
 - TOP OF ALL WATER MAINS TO HAVE A MINIMUM OF 3'-1/2" COVER UNLESS OTHERWISE NOTED.
 - VALVES ADJACENT TO TEES SHALL BE STRAPPED TO TEES.
 - BLOCK ALL FITTINGS WITH CONCRETE.
 - BURY LINE ELEVATIONS ON FIRE HYDRANTS SHALL BE SET TO THE ELEVATIONS SHOWN ON THE DRAWINGS. ALL FIRE HYDRANTS SHALL BE STRAPPED AND BUTTRESSED WITH CONCRETE IN ACCORDANCE WITH STANDARD DETAILS. SOIL AROUND THE FIRE HYDRANT TO BE COMPACTED IN ACCORDANCE WITH SECTIONS 10.05 OF THE STANDARD SPECIFICATIONS.
 - ALL WATER HOUSE CONNECTIONS SHALL BE FOR AN INSIDE METER SETTING, UNLESS OTHERWISE NOTED.
 - THE CONTRACTOR SHALL NOT OPERATE ANY WATER MAIN VALVES ON THE EXISTING SYSTEM.
 - ALL SEWER MAINS SHALL BE C.S.P.X., R.C.S.P., V.C.P.X., A.C.P. CLASS 2400 OR PVC UNLESS OTHERWISE NOTED.
 - THE CONTRACTOR SHALL PROVIDE A JOINT IN ALL SEWER MAINS WITHIN 2'-0" OF EXTERIOR MANHOLE WALL.
 - ALL MANHOLES SHALL BE 4'-0" INSIDE DIAMETER, UNLESS OTHERWISE NOTED.
 - FORCE MAINS SHALL BE D.I.P. ONLY.
 - MANHOLES SHOWN WITH 12" AND 16" WALLS ARE BRICK MANHOLES ONLY.
 - MANHOLES DESIGNATED W.T. IN PLAN AND PROFILE SHALL HAVE WATERTIGHT FRAME AND COVERS, STANDARD DETAIL G.5.52. WHERE WATERTIGHT MANHOLE FRAME AND COVER IS USED, SET TOP OF FRAME 1'-6" ABOVE FINISHED GRADE, STANDARD DETAIL G.5.41.
 - HOUSE(S) WITH THE SYMBOL "C.N.S." INDICATES THAT CELLAR CAN NOT BE SERVED.
 - ALL D.I.P. FITTINGS SHALL BE IN ACCORDANCE WITH AWWA SPECIFICATION C-153 DUCTILE IRON COMPACT FITTINGS 3" THROUGH 12" WIDTH.
 - ALL CONSTRUCTION TO BE DONE AS PER THIS PLAN & HOWARD COUNTY DESIGN MANUAL VOL. IV.

CONTRACT NO. 24-1750-D

LONG MEADOW II

WATER AND SEWER MAIN EXTENSIONS

HOWARD COUNTY, MARYLAND

DEPARTMENT OF PUBLIC WORKS

SEDIMENT CONTROL MEASURES FOR THIS CONTRACT WILL BE IMPLEMENTED IN ACCORDANCE WITH ARTICLE 15 OF THE HOWARD COUNTY DESIGN MANUAL AND STANDARDS AND SPECIFICATIONS FOR SOIL EROSION AND SEDIMENT CONTROL IN DEVELOPING AREAS AND ALSO AS SHOWN ON THE GRADING AND SEDIMENT CONTROL PLAN F-89-90

REVIEW FOR HOWARD COUNTY SOIL CONSERVATION DISTRICT AND MEETS TECHNICAL REQUIREMENTS

THIS DEVELOPMENT PLAN IS APPROVED FOR EROSION AND SEDIMENT CONTROL BY HOWARD COUNTY SOIL CONSERVATION DISTRICT

James M. Heston 8/3/89
U.S. SOIL CONSERVATION SERVICE DATE

APPROVED: *Stephen L. Hahn* 8/3/89
HOWARD SOIL CONSERVATION DISTRICT DATE

FOLLOWING INITIAL SOIL DISTURBANCE OR REDISTURBANCE, PERMANENT STABILIZATION SHALL BE COMPLETED WITHIN:

- 7 CALANDER DAYS FOR PERIMETER SEDIMENT CONTROL STRUCTURES, DIKES, SWALES, DITCHES, PERIMETER SLOPES & ALL SLOPES GREATER THAN 3:1.
- 14 DAYS AS TO ALL OTHER DISTURBED OR GRADED AREAS ON THE PROJECT SITE.

CONTRACT NO. 24-1750-D
LONG MEADOW II
WATER AND SEWER EXTENSION

DRAWING 44 132 09150

DEPARTMENT OF PUBLIC WORKS
HOWARD COUNTY, MARYLAND

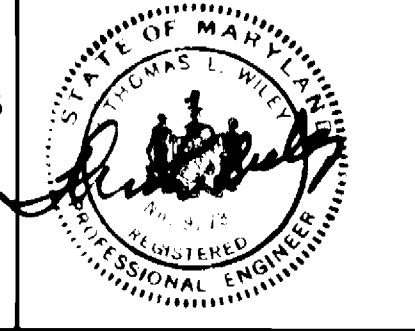
Granville W. Wickland 8/9/89
DIRECTOR OF PUBLIC WORKS DATE

Robert Benjamin 8-2-89
CHIEF, BUREAU OF UTILITIES DATE

Paul M. [unclear] 8/4/89
CHIEF, LAND DEVELOPMENT DIVISION DATE

DEWBERRY & DAVIS
ARCHITECTS-ENGINEERS-PLANNERS-SURVEYORS

3300 N. RIDGE ROAD
SUITE 100
ELLCOTT CITY, MD. 21043
(301) 461-7478



DES: D.E.T.	REC:	REVISION AS PER HOWARD COUNTY COMMENTS 10/19/80 (4/1987)
DRN: G.D.P.	WA: J	AS PER HOWARD CO. COMMENTS, EMBIT STANDARD DETAIL 10.08 CORRECTED TO 10.05 01-24-81
CHK: J.H.E.		
DATE: 11/88	BY NO.	REVISION DATE

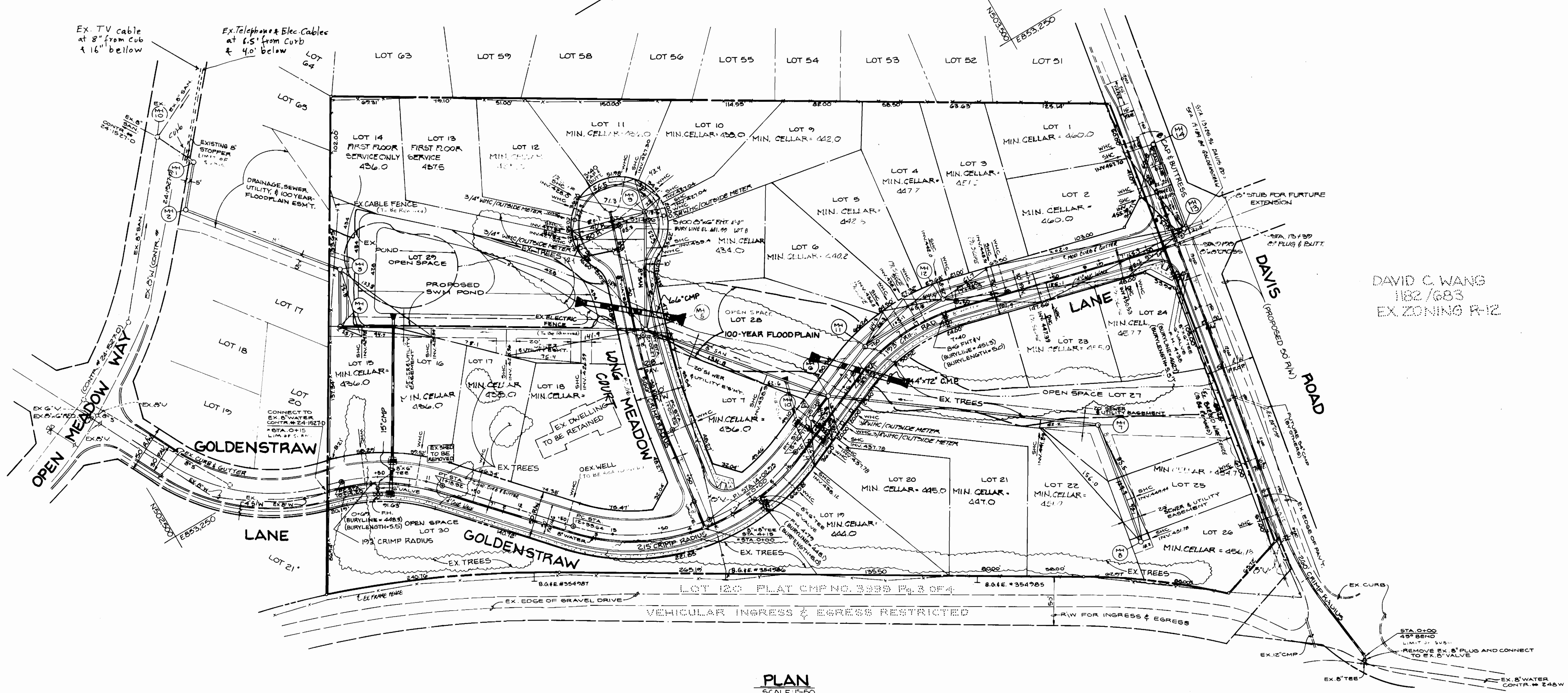
TITLE SHEET	
600' SCALE MAP NO. 30.3, 36, 37	BLOCK NO. _____

LONG MEADOW II
TAX MAP 36 PARCEL 264
6th ELECTION DISTRICT
HOWARD COUNTY, MARYLAND

SCALE AS SHOWN
SHEET 1 OF 4

MANHOLE TABULATION				
NO.	ROAD STATION	OFFSET	RIM ELEV.	SLOPE
1				
2				
3				
4				
5	2+07 BRIGHT MEADOW WAY	5' RIGHT	441.29	+4.00%
6	15+82.5 GOLDENSTRAW LA.	7' LEFT	447.21	+4.00%
7				
8				
9	5+55 BRIGHT MEADOW WAY	10' LEFT	442.72	+1.00%
10	15+52.5 GOLDENSTRAW LA.	7' LEFT	447.91	+1.47%
11	16+46 GOLDENSTRAW LA.	7' LEFT	448.30	+1.47%
12	17+36 GOLDENSTRAW LA.	7' RIGHT	451.48	+1.47%
13	13+30 DAVIS ROAD	7' RIGHT	461.70	+4.50%
14	14+20 DAVIS ROAD	7' RIGHT	470.50	+5.00%

LONG MEADOW - SECTION ONE
 PLAT NO. 7009
 EX. ZONING R-12



DAVID C. WANG
 1182/683
 EX. ZONING R-12

As BUILT, Sewer Only

CONTRACT NO. 24-1750-D
 LONG MEADOW II
 WATER AND SEWER EXTENSION

DEPARTMENT OF PUBLIC WORKS
 HOWARD COUNTY, MARYLAND
 Director: *Francis W. Cleveland* 8/18/89
 Chief, Bureau of Engineering: *Paul J. ...* 8/18/89
 Chief, Bureau of Utilities: *...* 8/2/89
 Chief, Land Development Division: *...* 8/18/89

DEWBERRY & DAVIS
 ARCHITECTS-ENGINEERS-PLANNERS-SURVEYORS
 3303 N. RIDGE ROAD
 SUITE 100
 ELLICOTT CITY, MD 21043
 (301) 461-7478



DES:	WRO	REVISION 80 PER HOWARD COUNTY COMMENTS	0/26/89	6/21/89
DRN:	WAW	AS PER HOWARD CO. COMMENTS (H10 MOVED) AND CORRECTED SEWER HOUSE CONNECTIONS FOR LOTS 19 THROUGH 22.		01/14/90
CHK:	MLH	CHANGE SMC LOTS 3-6 & 25-26 & 15-18		4/26/90
DATE:	BY	NO.	REVISION	DATE

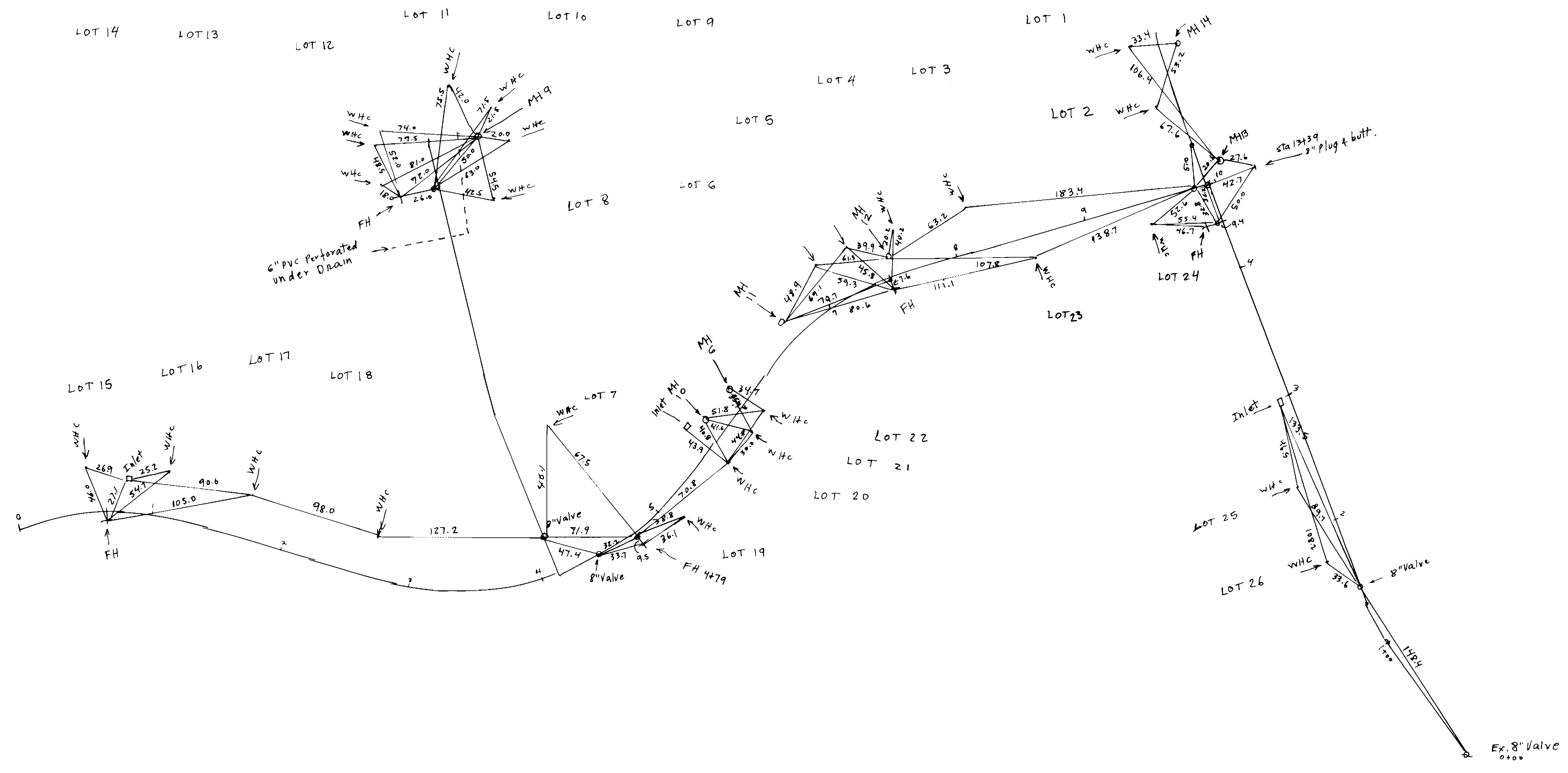
PLAN
 WATER & SEWER

LONG MEADOW II
 CONTRACT NO. 24-1750-D
 TAX MAP 36 PARCEL 234
 6 IN ELECTION DISTRICT
 HOWARD COUNTY, MARYLAND

SCALE AS SHOWN
 SHEET 2 OF 4

AS-BUILT 10-22-90

W5017-EC



AS BUILT, WATER ONLY

DEPARTMENT OF PUBLIC WORKS
 HOWARD COUNTY, MARYLAND

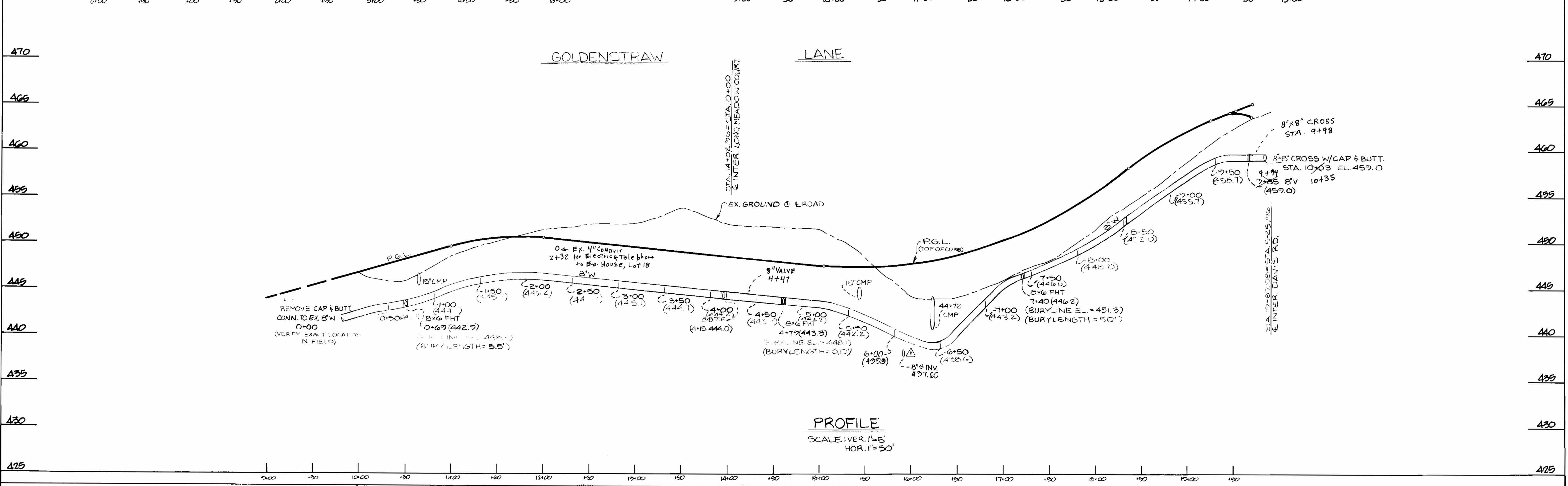
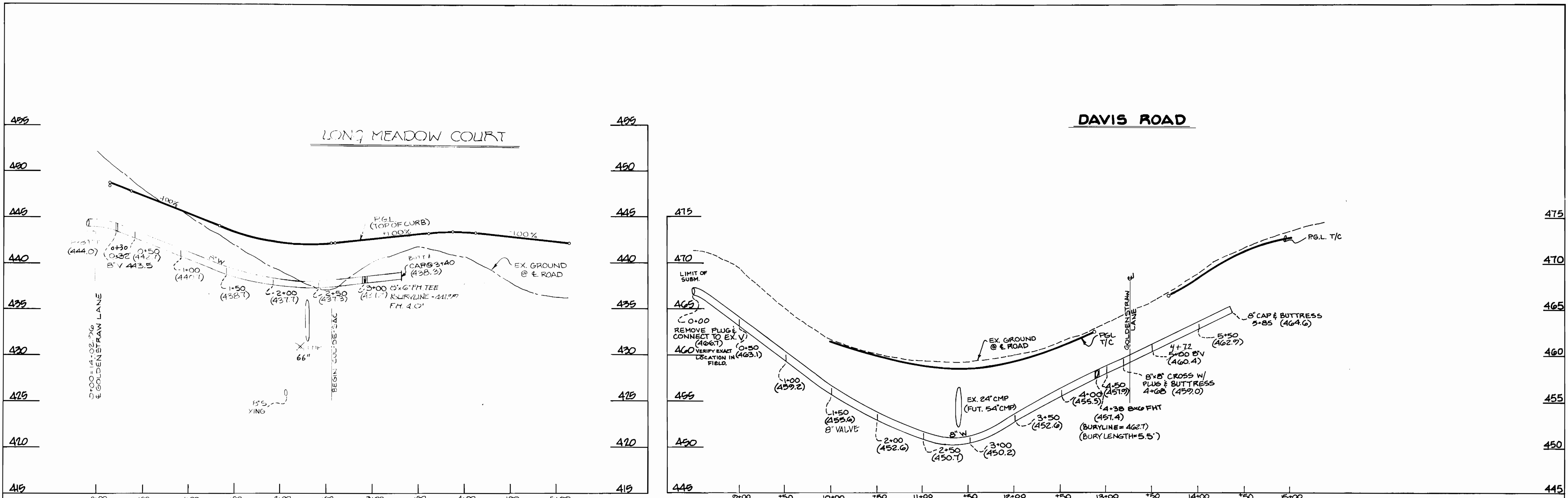
DIRECTOR OF PUBLIC WORKS _____ DATE _____
 CHIEF, BUREAU OF ENGINEERING _____ DATE _____

DES:				
DRN:				
CHK:				
DATE:	BY	NO.	REVISION	DATE

600' SCALE MAP NO. _____ BLOCK NO. _____

LONG MEADOW II
 24-1750-D

SHEET
 24 OF 4



PROFILE
SCALE: VER. 1"=5'
HOR. 1"=50'

DEPARTMENT OF PUBLIC WORKS
HOWARD COUNTY, MARYLAND

Granville W. Weiland 8/1/89
DIRECTOR OF PUBLIC WORKS DATE

Paul J. Ryan 8-2-89
CHIEF, BUREAU OF UTILITIES DATE

Donald J. Ryan 8/4/89
CHIEF, LAND DEVELOPMENT DIVISION DATE

DEWBERRY & DAVIS
ARCHITECTS ENGINEERS PLANNERS SURVEYORS

3300 N. RIDGE ROAD
SUITE 100
ELLCOTT CITY, MD. 21043
(301) 461-7478



DES:	WAD	NO. PER. HOWARD CO., LOCATION OF 8" BLOWER SHOWN ON THE WATER MAIN PROFILE	12440
DRN:			2
CHK:			
DATE:	BY NO.	REVISION	DATE

PROFILE WATER MAIN

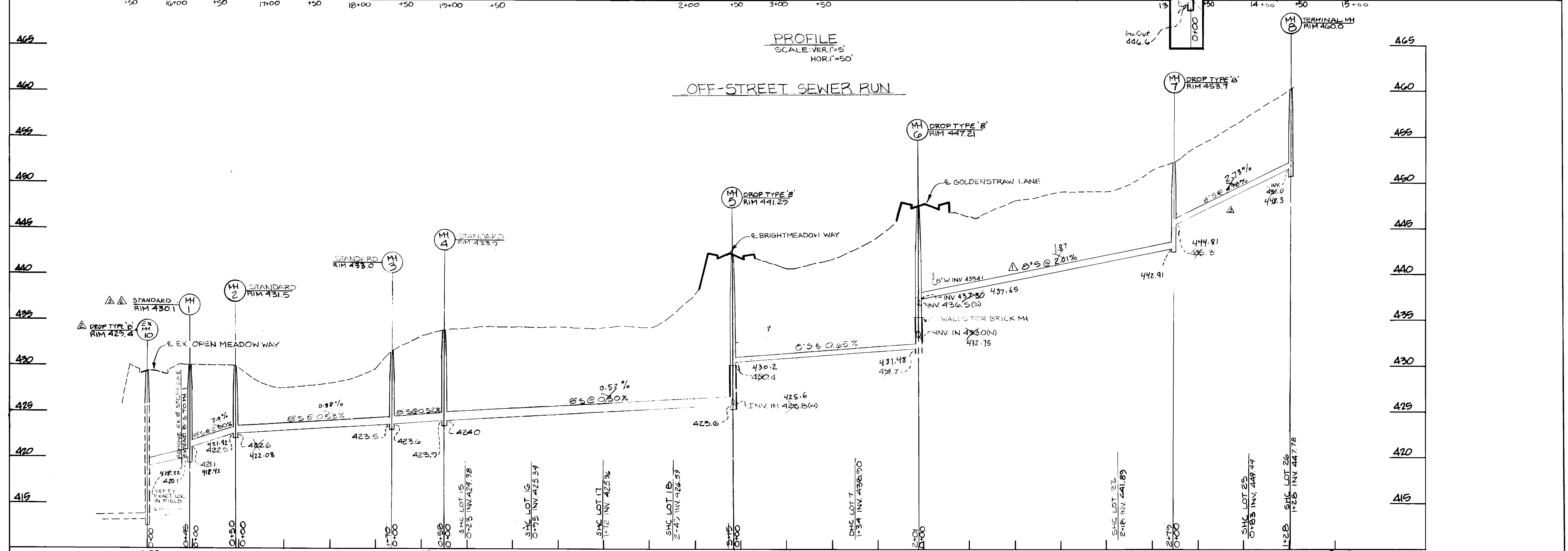
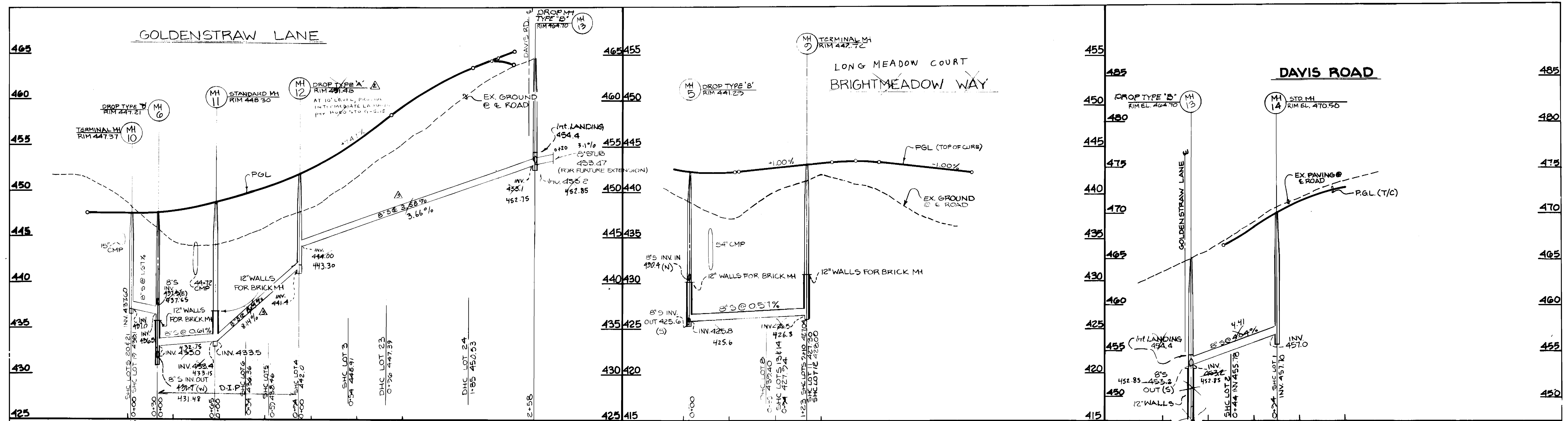
600' SCALE MAP NO. _____ BLOCK NO. _____

LONG MEADOW II

CONTRACT NO. 24-1750-D
6TH ELECTION DISTRICT
HOWARD COUNTY, MARYLAND

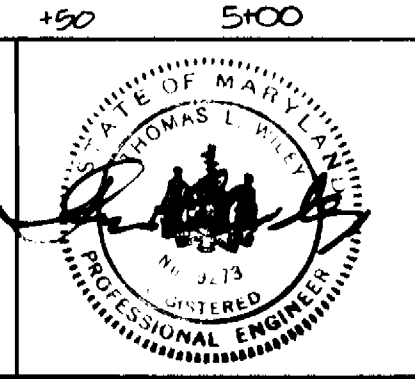
SCALE AS SHOWN

SHEET 3 OF 4



DEPARTMENT OF PUBLIC WORKS
 HOWARD COUNTY, MARYLAND
 Director of Public Works: *William W. Holland* 8/14/89
 Chief, Bureau of Engineering: *Paul J. Ryan* 8/14/89
 Chief, Bureau of Utilities: *John R. ...* 8-2-89
 Chief, Land Development Division: *Paul J. Ryan* 8/14/89

DEWBERRY & DAVIS
 ARCHITECTS-ENGINEERS-PLANNERS-SURVEYORS
 3300 N. RIDGE ROAD
 SUITE 100
 ELLICOTT CITY, MD. 21043
 (301) 461-7478



DES:	WAJ	AS PRE. HOWARD CO. SEWER MAIN BETWEEN MH 6 & MH 7 LOWERED 01/24/90	01/24/90
DRN:	M.C.	CHANGED TERMINAL TO PROP TYPE 'A'	01/24/90
CHK:	MLH	DELETE CHANGE 'A' AND CHANGE SLOPE OF PIPE	4/24/90
DATE:	BY	NO.	REVISION

**PROFILE
SEWER MAINS**

600' SCALE MAP NO. _____ BLOCK NO. _____

LONG MEADOWS II
 CONTRACT NO. 24-1750-D
 6 TH ELECTION DISTRICT
 HOWARD COUNTY, MARYLAND

SCALE AS SHOWN
 SHEET 4 OF 4