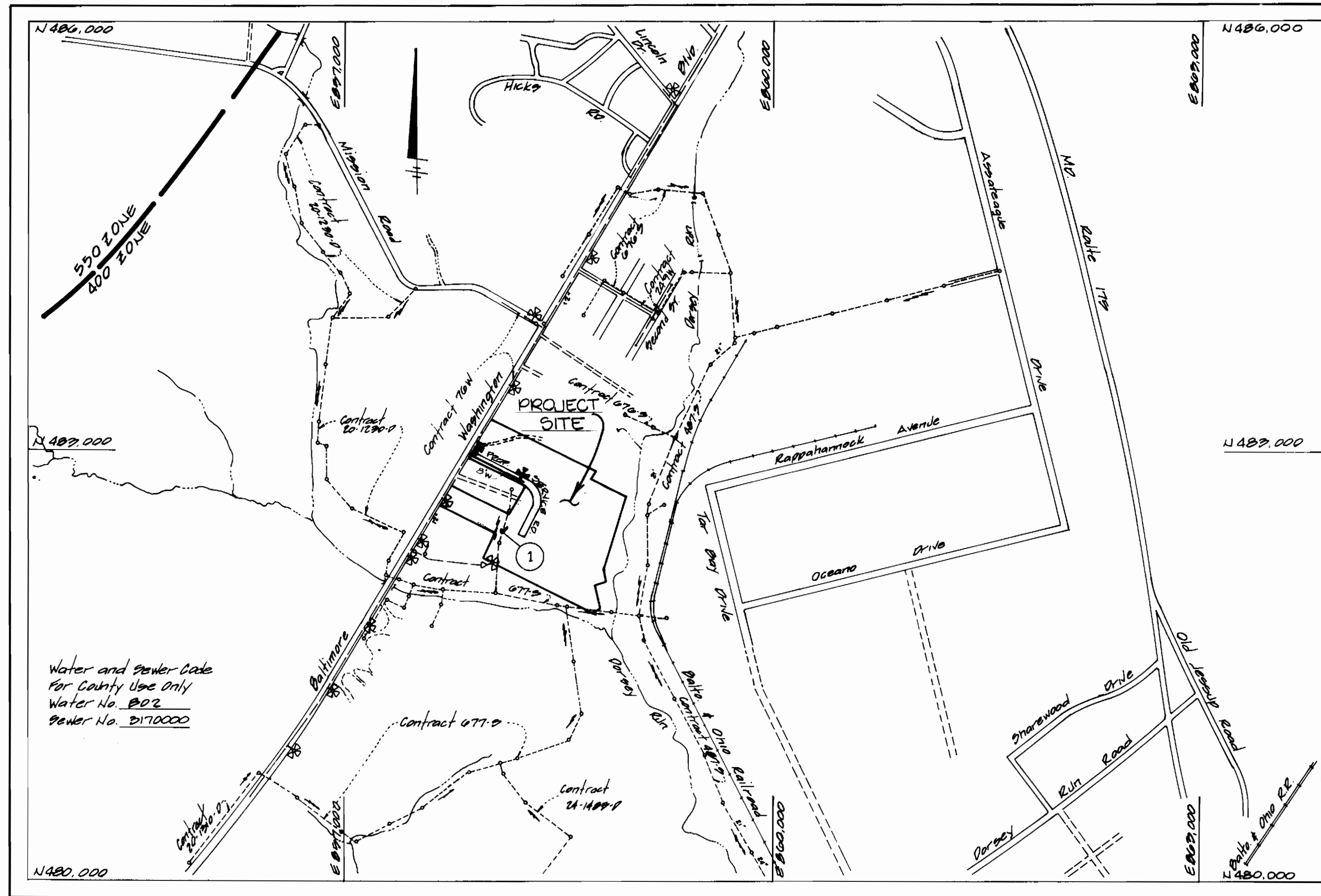


QUANTITIES			
ITEM	ESTIMATED	AS BUILT	SUPPLIER
MANHOLE	1 EACH	1	ATLANTIC BRASS
8" SWEDE	12 LF	12	ATLANTIC PIPE
8" PLUG (SWEDE)	1 EACH	1	FOUNDRY
*	1 EACH	1	
8" WATER	44 LF	434	ATLANTIC STATES
6" WATER	89 LF	80	JUSTICE IRON
4" WATER	10 LF	23	
8" x 4" TEE	2 EACH	2	
8" x 4" TEE	1 EACH	1	
6" VALVE	2 EACH	2	MUELLER CO
FIRE HYDRANT	1 EACH	1	MUELLER CO
1/2" BONO	1 EACH	1	ATLANTIC STATES
2" CAP	1 EACH	1	CAST IRON
4" CAP	1 EACH	1	
4" VALVE	1 EACH	1	MUELLER CO
2" METER	1 EACH	1	
2" METER VAULT	1 EACH	1	
* 1/2" TAPPING SUBEVE VALVE	1	1	MUELLER CO

50835 PVC

4173



Water and Sewer Code
for County Use Only
Water No. 002
Sewer No. 0170000

Type of Building LIGHT INDUSTRIAL
No. of Lots 3
No. of Water Mains Connections 2
No. of Sewer Mains Connections 2
Drainage Area 20000
Treatment Plant Storage Howard Co.

SCALE 1"=600'

- GENERAL NOTES**
- APPROXIMATE LOCATION OF EXISTING MAINS ARE SHOWN. THE CONTRACTOR SHALL TAKE ALL NECESSARY PRECAUTIONS TO PROTECT EXISTING MAINS & SERVICES AND MAINTAIN UNINTERRUPTED SUPPLY. ANY DAMAGE INCURRED SHALL BE REPAIRED IMMEDIATELY TO THE SATISFACTION OF THE ENGINEER AT THE CONTRACTOR'S EXPENSE.
 - ALL HORIZONTAL CONTROLS ARE BASED ON MARYLAND STATE COORDINATES.
 - ALL VERTICAL CONTROLS ARE BASED ON U.S.G.S. DATA.
 - ALL PIPE ELEVATIONS SHOWN ARE INVERT ELEVATIONS.
 - CLEAR ALL UTILITIES BY A MINIMUM OF 6" CLEAR ALL POLES BY 1'-0" MINIMUM OR TUNNEL AS REQUIRED. THE OWNER HAS CONTACTED THE UTILITY COMPANIES AND HAS MADE ARRANGEMENTS FOR BRACING OF POLES IF ANY.
 - CONTRACTOR SHALL NOTIFY THE FOLLOWING UTILITIES OR AGENCIES AT LEAST FIVE (5) WORKING DAYS BEFORE STARTING WORK SHOWN ON THESE PLANS:
AT&T COMPANY: 322-2156
BALTO GAS & ELECT. CO. - CONTRACTOR SERVICES: 561-2505
BALTO GAS & ELECT. CO. - UNDERGROUND DAMAGE CONTROL: 234-5021
BALTO GAS & ELECT. CO. - TROUBLE SHOOTING: 235-9013
WES UTILITY: 1-553-0100
CHESAPEAKE & POTOMAC TELEPHONE CO.: 725-7976
BUREAU OF UTILITIES - HOWARD CO.: 722-2366
 - TREES ARE TO BE PROTECTED FROM DAMAGE TO MAXIMUM EXTENT. TREES LOCATED WITHIN THE CONSTRUCTION STRIP ARE NOT TO BE REMOVED OR DAMAGED BY THE CONTRACTOR.
 - CONTRACTOR SHALL REMOVE TREES, STUMPS AND ROOTS ALONG LINE OF EXCAVATION AS DIRECTED BY THE ENGINEER. PAYMENT FOR SUCH REMOVAL SHALL BE INCLUDED IN THE UNIT PRICE BID FOR CONSTRUCTION OF THE MAIN.
 - PLACE REGULATION "MEN WORKING" AND WARNING SIGNS AS REQUIRED TO COMPLY WITH MARYLAND STATE HIGHWAY ADMINISTRATION MANUAL OF TRAFFIC CONTROL FOR HIGHWAY CONSTRUCTION & MAINTENANCE OPERATIONS.
 - ALL SEWER MAINS SHALL BE C.S.P.X., R.C.S.P., PVC, V.C.P.X. OR A.C.P. CLASS 2000
 - CONTRACTOR SHALL PROVIDE A JOINT IN ALL SEWER MAINS WITHIN 2'-0" OF EXTERIOR MANHOLE WALLS.
 - ALL MANHOLES SHALL BE 4'-0" INSIDE DIA. UNLESS OTHERWISE NOTED
 - ALL WATER MAINS TO BE R.I.P. UNLESS OTHERWISE NOTED
 - TOP OF WATER MAINS TO HAVE A MINIMUM OF 2'-6" COVER UNLESS OTHERWISE NOTED
 - VALVES ADJACENT TO TEE'S SHALL BE STRAPPED TO TEE'S.
 - BURY LINE ELEVATIONS ON FIRE HYDRANTS SHALL BE SET TO THE ELEVATIONS SHOWN ON THE DRAWINGS. ALL FIRE HYDRANTS SHALL BE STRAPPED AND BUTTRESSED WITH CONCRETE IN ACCORDANCE WITH STANDARD DETAILS. SOIL AROUND FIRE HYDRANT TO BE COMPACTED IN ACCORDANCE WITH SECTION 1002 AND 1003 OF THE STANDARD SPECIFICATIONS.
 - THE CONTRACTOR SHALL NOT OPERATE ANY WATER MAIN VALVES ON THE EXISTING SYSTEM.
 - MANHOLES LOCATED WITHIN PROPOSED ROADWAY SHALL HAVE STD. HEAVY TRAFFIC MANHOLE FRAME & COVER. STANDARD DETAIL 65.51.
 - FOR DETAILS NOT SHOWN ON THE DRAWINGS, AND FOR MATERIALS AND CONSTRUCTION METHODS USE HOWARD COUNTY DESIGN MANUAL, VOLUME II, STANDARD SPECIFICATIONS AND DETAILS FOR CONSTRUCTION. THE CONTRACTOR SHALL HAVE A COPY OF VOLUME II ON THE JOB.
 - EXISTING UTILITIES IN THE VICINITY OF THE PROPOSED WORK FOR WHICH TEST PITS HAVE NOT BEEN DUG SHALL BE LOCATED BY THE CONTRACTOR TWO WEEKS IN ADVANCE OF CONSTRUCTION OPERATIONS AT HIS OWN EXPENSE.
 - ALL FITTINGS SHALL BE BUTTRESSED OR ANCHORED WITH CONCRETE IN ACCORDANCE WITH THE STANDARD DETAILS UNLESS OTHERWISE PROVIDED FOR ON THE DRAWINGS.

CONTRACT NO. 24-1746-D

CHERRY HILL PROPERTY

WATER AND SEWER MAIN EXTENSIONS

HOWARD COUNTY, MARYLAND

DEPARTMENT OF PUBLIC WORKS

SEWAGE CONTROL MEASURES FOR THIS CONTRACT WILL BE IMPLEMENTED IN ACCORDANCE WITH SECTION 219 OF THE HOWARD COUNTY DESIGN MANUAL AND STANDARDS AND SPECIFICATIONS FOR SOIL EROSION AND SEDIMENT CONTROL IN DEVELOPING AREAS AND ALSO AS SHOWN ON THE GRADING AND SEDIMENT CONTROL PLAN 20P-00-02

REVIEW FOR HOWARD COUNTY SOIL CONSERVATION DISTRICT AND MEETS TECHNICAL REQUIREMENTS

Jack Helms / 12/11/87
U.S. SOIL CONSERVATION SERVICE / DATE

THE DEVELOPMENT PLAN IS APPROVED FOR EROSION AND SEDIMENT CONTROL BY HOWARD COUNTY SOIL CONSERVATION DISTRICT

Robert W. Helms / 12/17/87
HOWARD COUNTY SOIL CONSERVATION DISTRICT / DATE

CONTRACT NO. 24-1746-D
CHERRY HILL PROPERTY
WATER AND SEWER MAIN EXTENSIONS
HOWARD COUNTY, MARYLAND

<p>DEPARTMENT OF PUBLIC WORKS HOWARD COUNTY, MARYLAND</p> <p>12/10/87 DIRECTOR OF PUBLIC WORKS</p> <p>12-18-87 M. J. A. ... CHIEF, BUREAU OF UTILITIES</p>	<p>DEVELOPMENT ENGINEERING CONSULT.</p> <p>6603 YORK RD. BALTIMORE, MARYLAND 21212 (301) 377-2600</p>		<p>DES: SET</p> <p>DRN: SET</p> <p>CHK: S.B.S.</p> <p>DATE: 11/16/87</p>	<h2 style="font-size: 2em;">TITLE SHEET</h2>	<p>CHERRY HILL PROPERTY WATER AND SEWER MAIN EXT. CONTRACT NO. 24-1746-D SIXTH ELECTION DISTRICT HOWARD COUNTY, MARYLAND</p>	<p>SCALE AS SHOWN</p> <p>SHEET 1 OF 2</p>
--	---	--	--	--	--	---

BENCH MARK

STA 2812.00 ELEV. 217.572
COORDINATE: N 48°17'00" W 689'12.937
DESCRIPTION: CONC. MON. 2' BELOW SURFACE
N. 90° HILLS RD., W. SIDE L.S.
ROUTE 1

NOTE: REMOVE THE EX. FIRE HYD. & CAPS IF NOT USED WITHIN THE PROJ. W.P. TO THE BUREAU OF UTILITIES, HOWARD COUNTY, 992-2300

EX FIRE HYD. TO BE RELOCATED
NOTE: CONTRACTOR MUST TEST EX. GAS MAIN & OTHER UTILITIES @ HIS OWN EXPENSE @ LEAST TWO WEEKS BEFORE CONSTRUCTION ON PROP. MAIN.

STA 0+26.16 RT
12" B TAPPING SUBSIVE VALVE

WASHINGTON BLVD.
BALTO.

NOTE: SEE I.D.A. 4/10/88

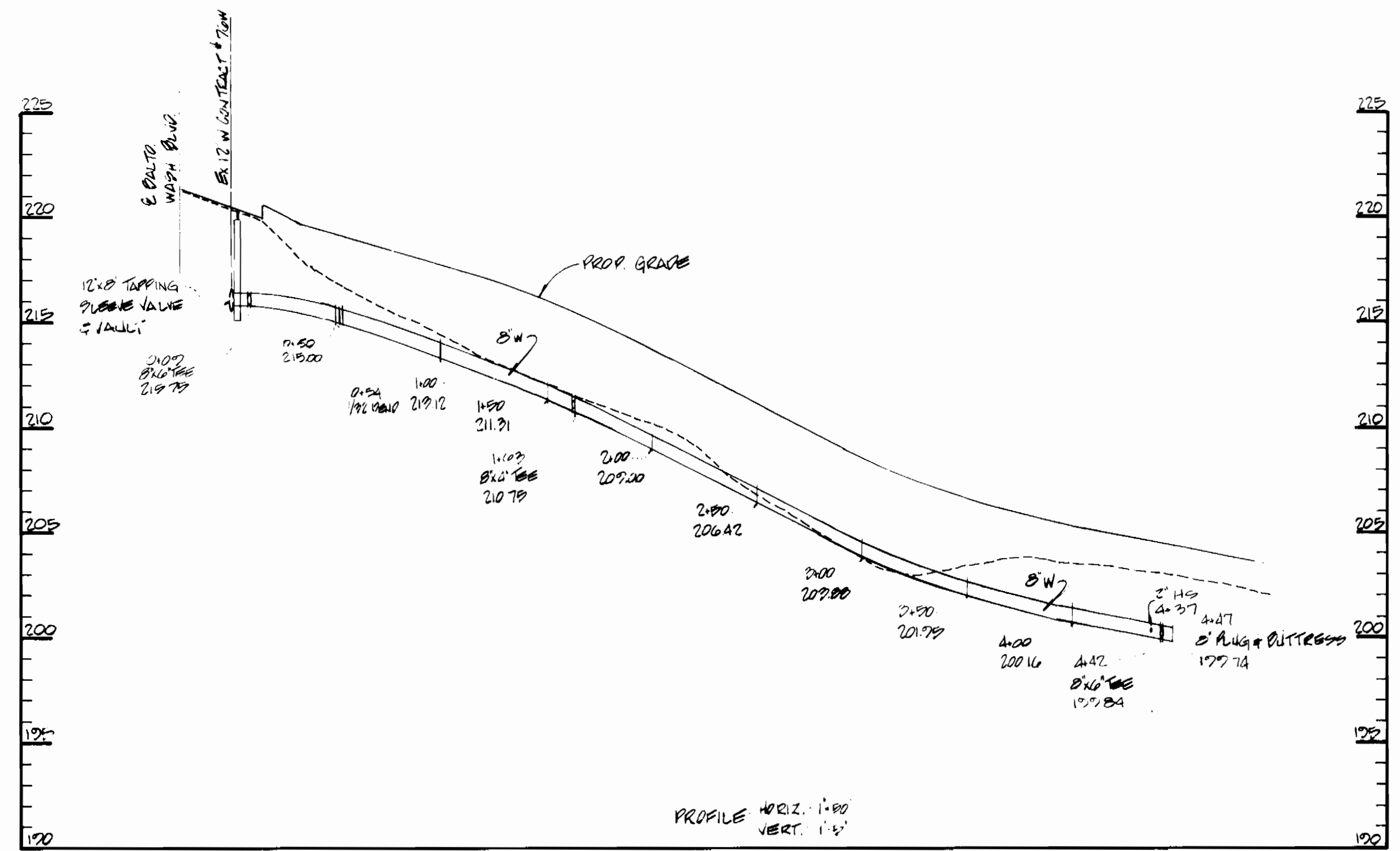
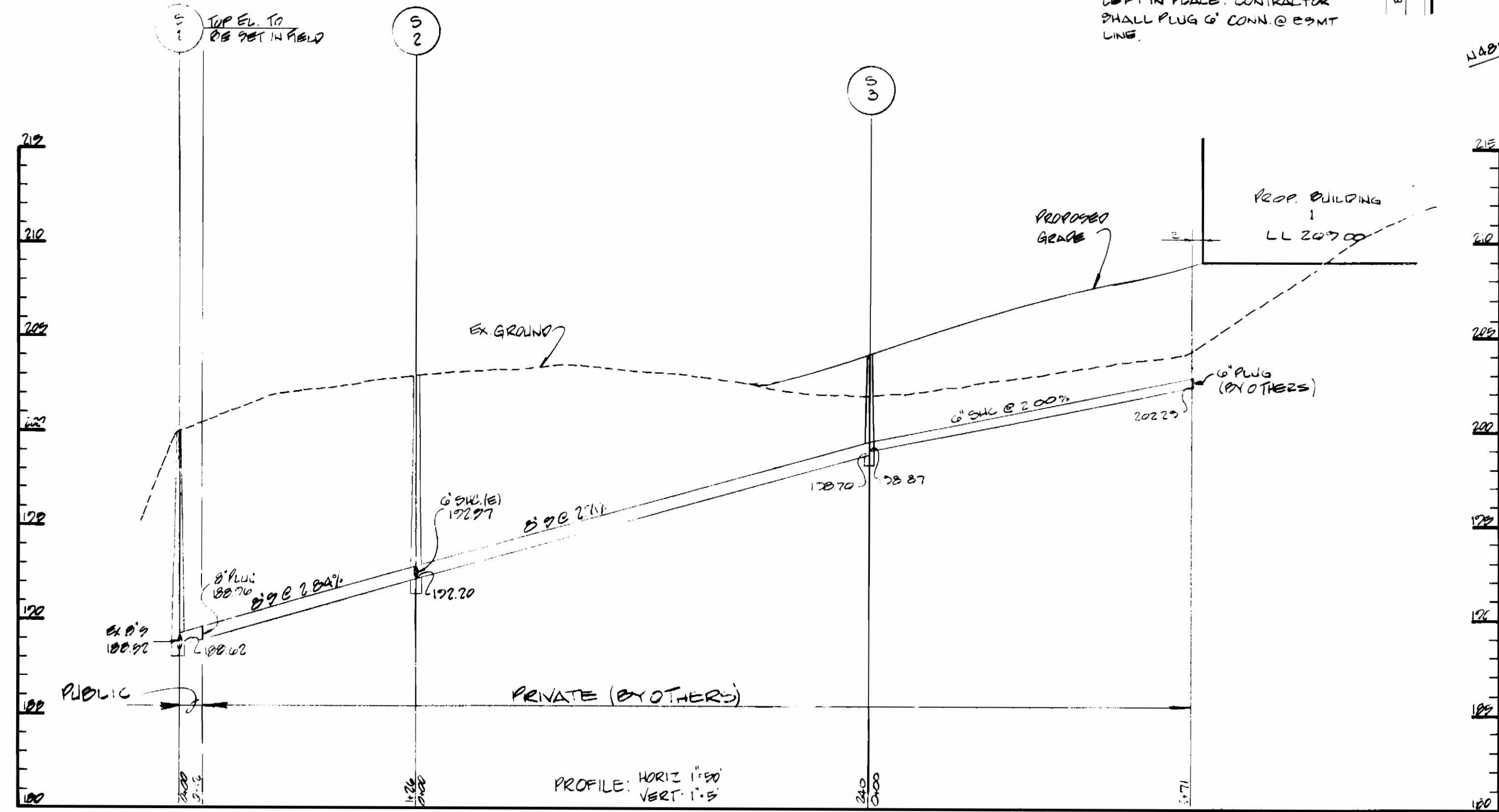
EX 20" R/W CONTRACT 0719

PLAN 1"=50'

NOTE: EX METERS TO BE RETURNED TO BUREAU OF UTILITIES.

NOTE: G. SHC TO BE ABANDONED & LEFT IN PLACE. CONTRACTOR SHALL PLUG G. COIN @ EOMT LINE.

CONTRACT NO. 00719



DEPARTMENT OF PUBLIC WORKS
HOWARD COUNTY, MARYLAND

DEVELOPMENT ENGINEERING CONSULTANT

Director of Public Works
12/10/87
12-10-87

Chief, Bureau of Engineering
12-10-87
Chief, Land Development Division

6605 YORK RD.
BALTIMORE, MARYLAND 21212
(301) 371-2600



DES:	ZET.				
DRN:	ZET.				
CHK:	ZET.				
DATE:	11/14/87				
		RELLOCATE FIRE HYDRANT SHIRT SO' N			12/21
		REVISE EX PLUGS - SERVICES TO REMAIN			12/21

PLAN AND PROFILES
WATER AND SEWER MAINS

CHERRY HILL PROPERTY
WATER AND SEWER MAIN EXT.
CONTRACT NO. 24-1746-D
SIXTH ELECTION DISTRICT
HOWARD COUNTY, MARYLAND

SCALE AS SHOWN
SHEET 2 OF 2