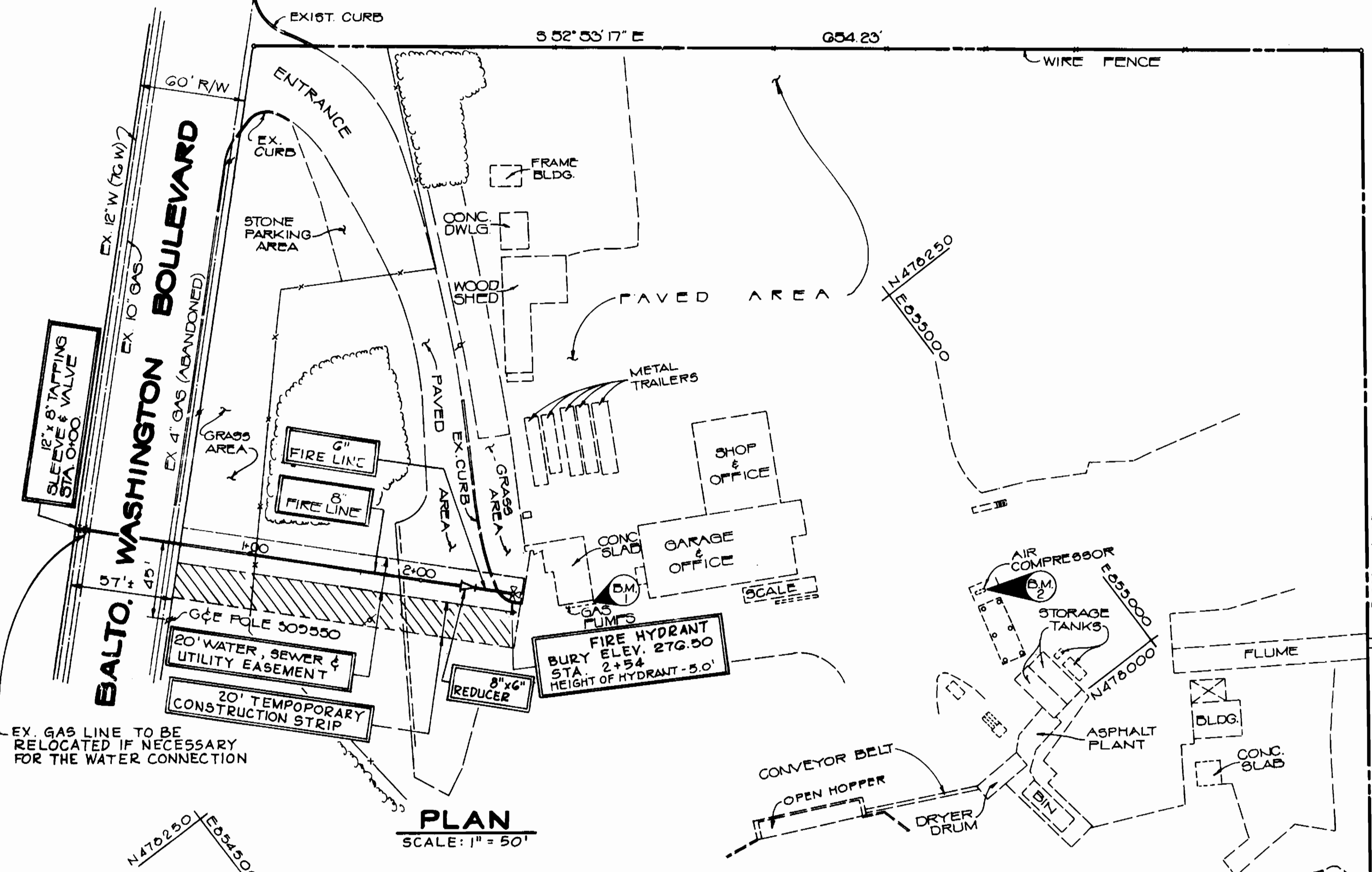


BALTIMORE - WASHINGTON INDUSTRIAL PARK  
FLAT 3435

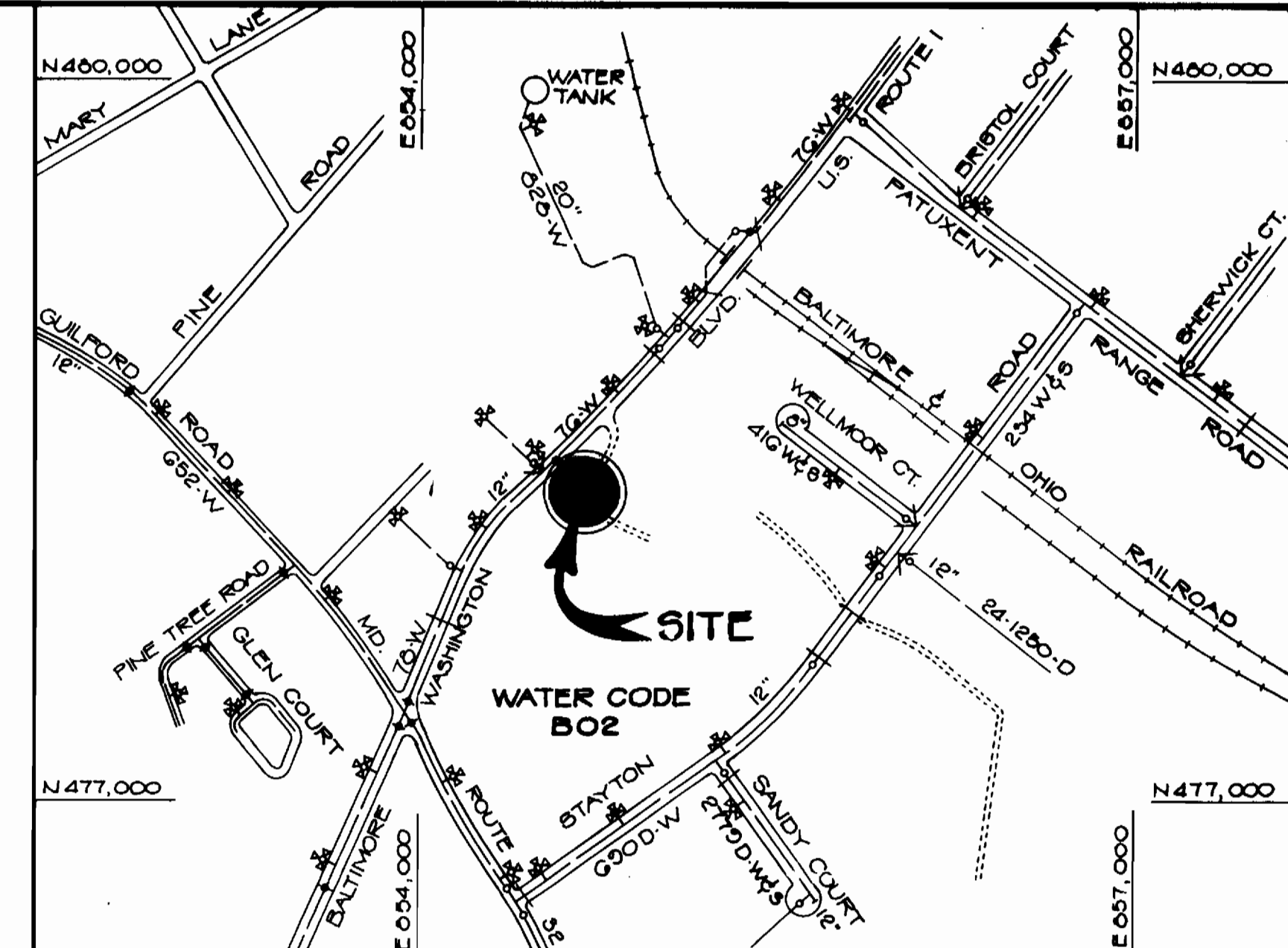


**PLAN**  
SCALE: 1" = 50'

**BENCH MARKS**

- B.M.-1 ELEV. 274.27  
□ CUT IN S.E. CORNER OF CONCRETE GAS PUMP ISLAND W. OF OFFICE BLDG.
- B.M.-2 ELEV. 270.49  
□ CUT IN CONCRETE SLAB NORTH OF ASPHALT PLANT.

QUANTITIES			
ITEM NO.	ITEM	PROP.	AS-BUILT
1.	12" x 6" TAPPING SLEEVE	1 EA.	
2.	6" VALVE & VALVE BOX	1 EA.	
3.	FIRE HYDRANT	1 EA.	
4.	6" WATER LINE	225 L.F.	
5.	6" WATER LINE	20 L.F.	

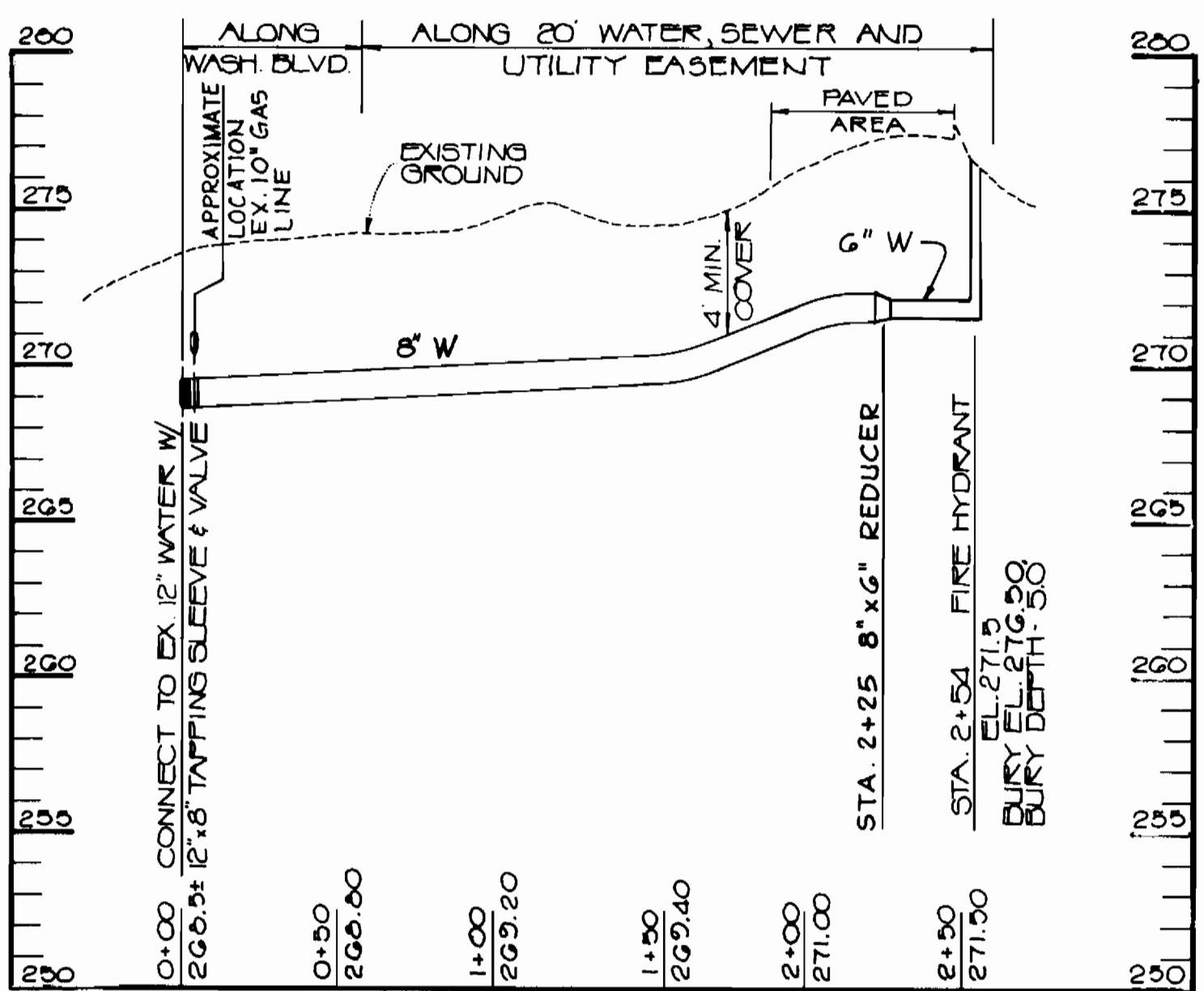


**VICINITY MAP**  
SCALE: 1" = 600'

No. WHC - 0  
No. SHC - 0

**GENERAL NOTES**

1. APPROXIMATE LOCATION OF EXISTING MAINS ARE SHOWN. THE CONTRACTOR SHALL TAKE ALL NECESSARY PRECAUTIONS TO PROTECT EXISTING MAINS AND SERVICES AND MAINTAIN UNINTERRUPTED SUPPLY. ANY DAMAGE INCURRED SHALL BE REPAIRED IMMEDIATELY TO THE SATISFACTION OF THE ENGINEER, AT THE CONTRACTOR'S EXPENSE.
2. ALL PIPE ELEVATIONS SHOWN ARE INVERT ELEVATIONS.
3. CLEAR ALL UTILITIES BY A MINIMUM OF 6'. CLEAR ALL POLES BY 2'-0" MINIMUM OR TUNNEL AS REQUIRED. ANY COST INCURRED TO THE CONTRACTOR FOR TUNNELING OR BRACING AT POLES SHALL BE INCLUDED IN UNIT PRICES BID FOR CONSTRUCTION OF THE MAIN.
4. FOR DETAILS NOT SHOWN ON THE DRAWINGS USE HOWARD COUNTY STANDARD DETAILS.
5. FOR MATERIALS AND CONSTRUCTION METHODS USE HOWARD COUNTY STANDARD SPECIFICATIONS.
6. CONTRACTOR SHALL LOCATE EXISTING UTILITIES A MINIMUM OF TWO (2) WEEKS IN ADVANCE OF CONSTRUCTION OPERATIONS IN THE VICINITY OF PROPOSED UTILITIES AT HIS OWN EXPENSE.
7. CONTRACTOR SHALL NOTIFY THE FOLLOWING UTILITIES OR AGENCIES AT LEAST FIVE (5) DAYS BEFORE STARTING WORK SHOWN ON THESE PLANS:
  - STATE HIGHWAY ADMINISTRATION - 531-5533
  - BALTIMORE GAS AND ELECTRIC COMPANY - UNDERGROUND ELECTRIC DISTRIBUTION CUSTOMER SERVICE - 685-0123
  - BALTIMORE GAS AND ELECTRIC COMPANY - UNDERGROUND GAS DISTRIBUTION CUSTOMER SERVICE - 685-0123
  - ENGINEERING - "DAMAGE CONTROL" - 234-5621
  - "MISS UTILITY" - 1-550-0100
  - CHESAPEAKE & POTOMAC (C&P) TELEPHONE COMPANY - 725-3076
  - AMERICAN TELEPHONE AND TELEGRAPH - CABLE LOCATION DIVISION - 333-3553
  - COLONIAL PIPELINE COMPANY - 705-1300
  - BUREAU OF UTILITIES HOWARD COUNTY - 502-2366
8. TREES ARE TO BE PROTECTED FROM DAMAGE TO THE MAXIMUM EXTENT. TREES LOCATED WITHIN THE CONSTRUCTION STRIP ARE NOT TO BE REMOVED OR DAMAGED BY THE CONTRACTOR.
9. CONTRACTOR SHALL REMOVE TREES, STUMPS AND ROOTS ALONG LINE OF EXCAVATION AS DIRECTED BY THE ENGINEER. PAYMENT FOR SUCH REMOVAL SHALL BE INCLUDED IN THE UNIT PRICE BID FOR CONSTRUCTION OF THE MAIN.
10. PLACE REGULATION "MEN WORKING" AND WARNING SIGNS AS REQUIRED TO COMPLY WITH MARYLAND STATE HIGHWAY ADMINISTRATION MANUAL OF TRAFFIC CONTROL FOR HIGHWAY CONSTRUCTION AND MAINTENANCE OPERATIONS.
11. ALL WORK WITHIN BALTIMORE WASHINGTON BOULEVARD SHALL BE DONE IN ACCORDANCE WITH THE REQUIREMENTS OF STATE HIGHWAY ADMINISTRATION UTILITY PERMIT.



**WATER MAIN PROFILE**

SCALE: HORIZ 1" = 50'  
VERT. 1" = 5'

**WATER MAIN NOTES**

1. ALL WATER MAINS TO BE C.I.P. OR D.I.P. UNLESS OTHERWISE NOTED
2. TOP OF ALL WATER MAINS TO HAVE A MINIMUM OF 4' COVER UNLESS OTHERWISE NOTED
3. VALVES ADJACENT TO TEES SHALL BE STRAPPED TO TEES.
4. BLOCK ALL FITTINGS WITH CONCRETE.
5. BURY LINE ELEVATIONS ON FIRE HYDRANTS SHALL BE SET TO THE ELEVATIONS SHOWN ON THE DRAWINGS. ALL FIRE HYDRANTS SHALL BE STRAPPED AND BUTTRESSED WITH CONCRETE IN ACCORDANCE WITH STANDARD DETAILS. SOIL AROUND THE FIRE HYDRANT TO BE COMPACTED IN ACCORDANCE WITH SECTIONS 1003 AND 1008 OF THE STANDARD SPECIFICATIONS.
6. THE CONTRACTOR SHALL NOT OPERATE ANY WATER MAIN VALVES ON THE EXISTING SYSTEM.

SEDIMENT CONTROL MEASURES FOR THIS CONTRACT WILL BE IMPLEMENTED IN ACCORDANCE WITH SECTION 210 OF THE HOWARD COUNTY DESIGN MANUAL & STANDARD SPECIFICATIONS FOR SOIL EROSION & SEDIMENT CONTROL & SDP-06-70.

THIS DEVELOPMENT PLAN IS APPROVED FOR SOIL EROSION AND SEDIMENT CONTROL BY THE HOWARD COUNTY SOIL CONSERVATION DISTRICT.

APPROVED: *[Signature]* 12/21/87  
SIGNATURE DATE  
HOWARD COUNTY SOIL CONSERVATION DISTRICT

REVIEWED FOR HOWARD COUNTY SOIL CONSERVATION DISTRICT AND MEETS TECHNICAL REQUIREMENTS.

APPROVED: *[Signature]* 12-31-87  
SIGNATURE DATE  
U.S. SOIL CONSERVATION SERVICE

DEPARTMENT OF PUBLIC WORKS  
HOWARD COUNTY, MARYLAND

*[Signature]* 1-11-88  
DIRECTOR OF PUBLIC WORKS DATE

*[Signature]* 1-11-88  
CHIEF, BUREAU OF UTILITIES DATE

*[Signature]* 1-12-88  
CHIEF, BUREAU OF ENGINEERING DATE

*[Signature]* 7-11-88  
CHIEF, LAND DEVELOPMENT DIVISION DATE

**WHITNEY MAILEY FOX MAGNANI**  
CONSULTING ENGINEERS  
1850 YORK ROAD  
TIMONIUM, MARYLAND 21093  
PHONE: (301) 252-6060

DESIGNED: A.R.  
DRAWN: M.E.W.  
CHECKED: A.R.  
DATE: 12-25-87

*[Signature]* 10/13/87

**WATER MAIN EXTENSION**  
**CONTRACT NO. 44-1745-D**

600' SCALE MAP NO. 40 BLOCK NO. \_\_\_\_\_

**RATRIE, ROBBINS & SCHWEIZER, INC.**  
**ASPHALT PLANT**

ELECTION DISTRICT: GUILFORD NO. G

SCALE AS SHOWN  
SHEET 1 OF 1