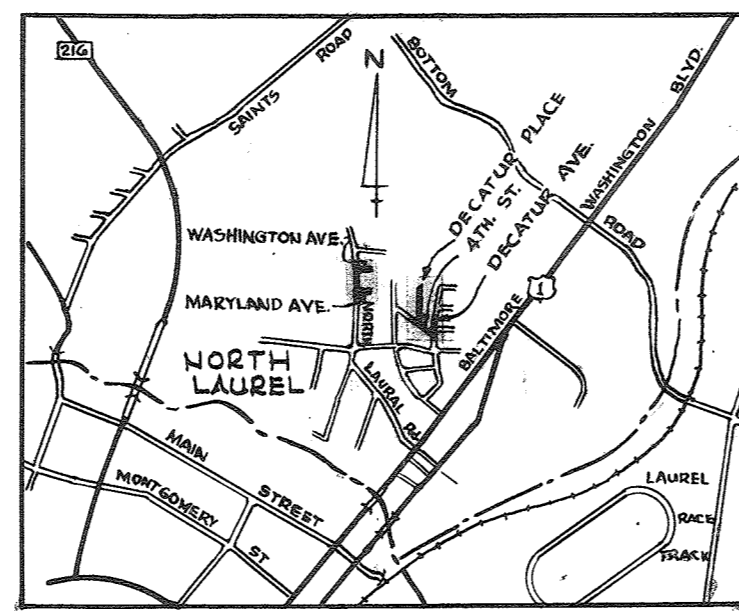


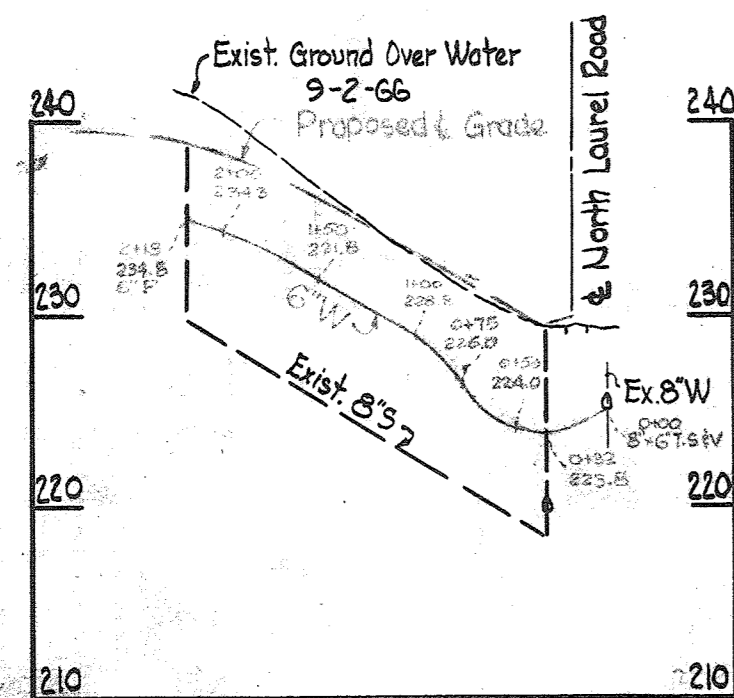
**GENERAL NOTES**

1. Approximate location of existing mains are shown. The Contractor shall take all necessary precautions to protect existing mains and services and maintain uninterrupted supply. Any damage incurred shall be repaired immediately.
2. All pipe elevations shown are invert elevations.
3. The Contractor shall locate existing utilities a minimum of two weeks in advance of construction operations in vicinity of utilities.
4. For all standard details see standards bound in Specifications.
5. All water mains to be C.I.P. or D.I.P. and have a minimum of 3/2' cover.
6. Block all fittings with concrete, see standard details bound in specifications.
7. Bury line elevation on fire hydrants shall be set the same as edge of paving or as directed by the Engineer in the field.
8. Buttress fire hydrants with concrete; provide copper pipe at weep holes as required for positive drainage. For Buttress dimensions see standard detail W-8 Buttress for Caps.
9. Clear all poles by 2'-0" minimum or tunnel as required. Clear all existing utilities by 6' minimum.

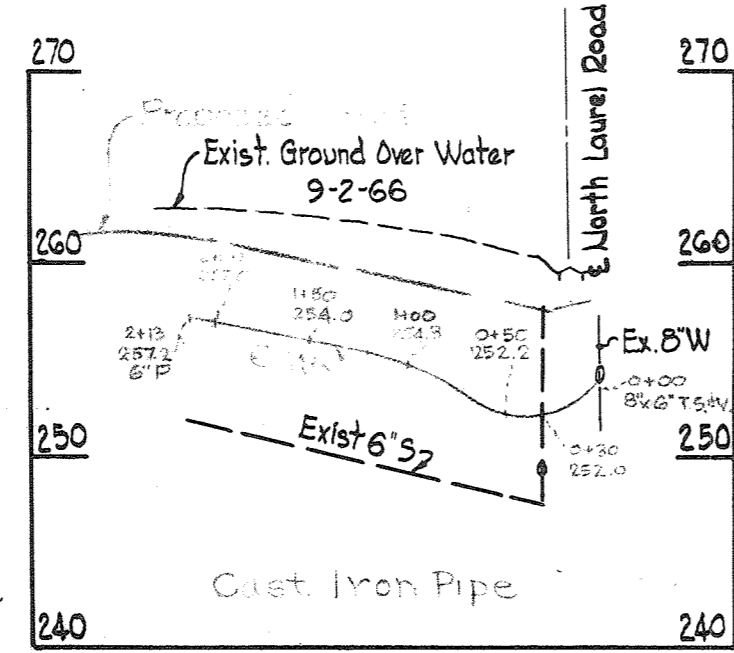


**LOCATION MAP**  
Scale: 1" = 1/2 mile

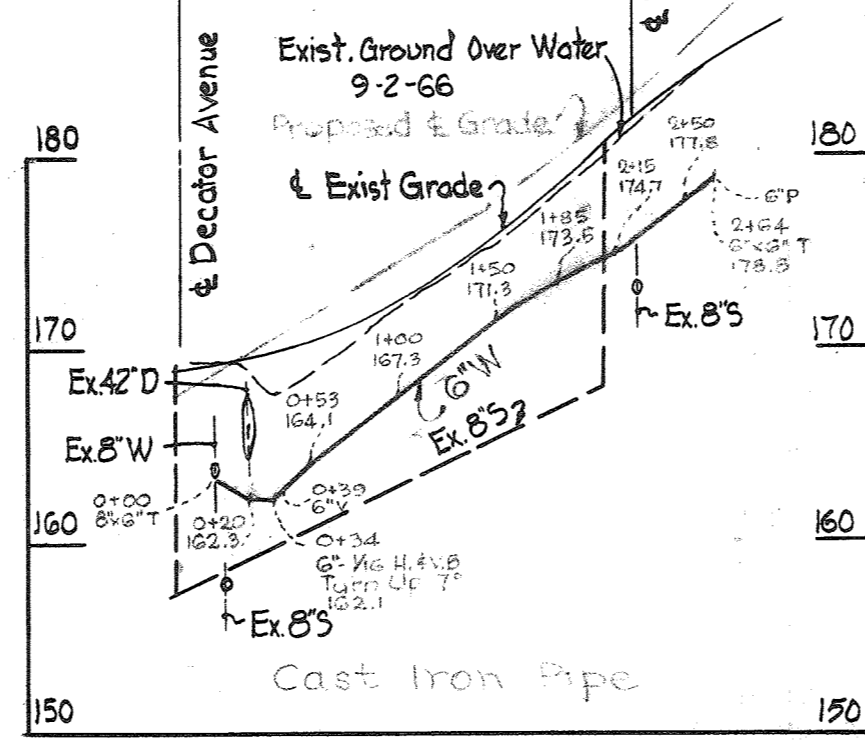
**MARYLAND AVENUE**



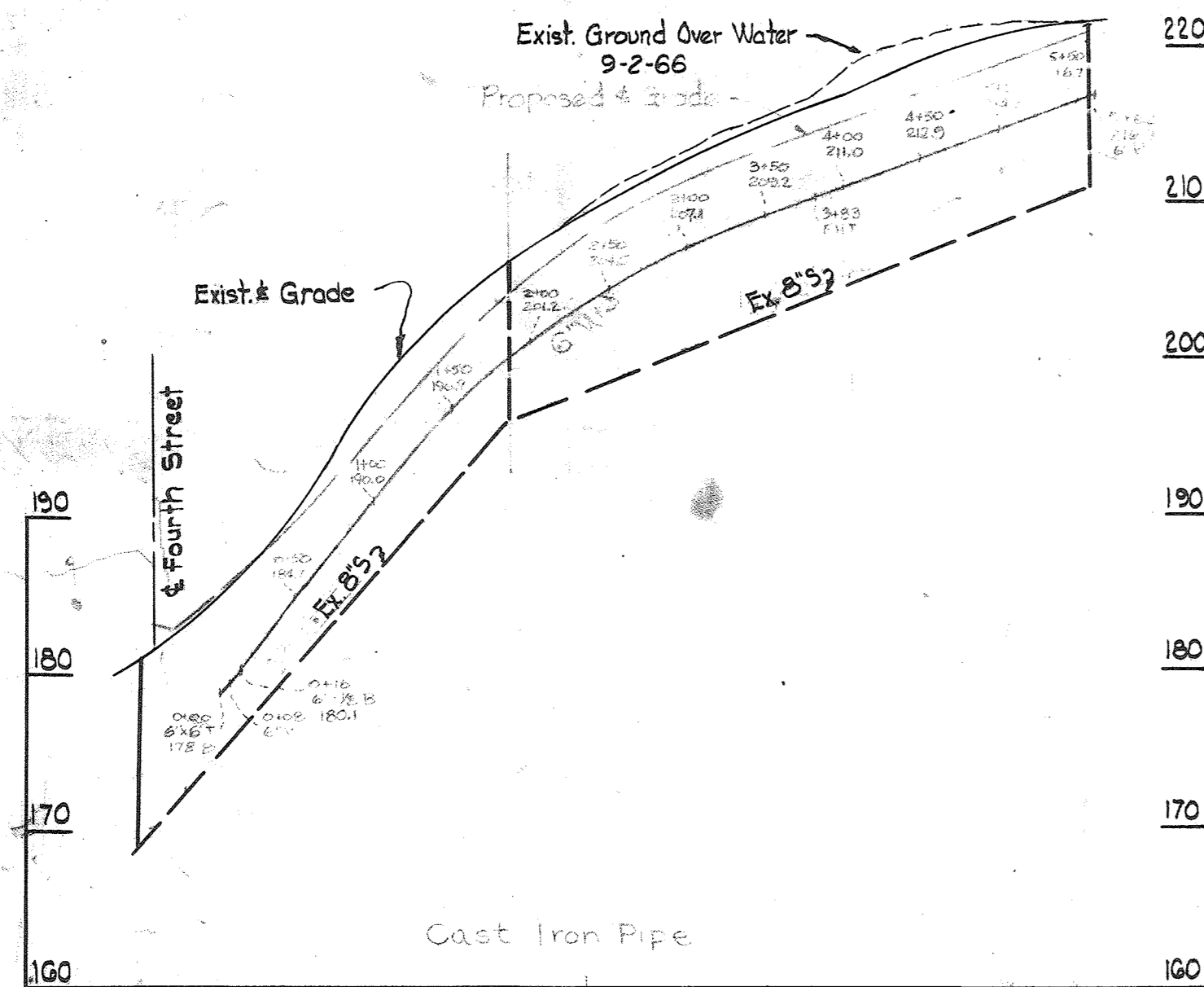
**WASHINGTON AVENUE**



**FOURTH STREET**

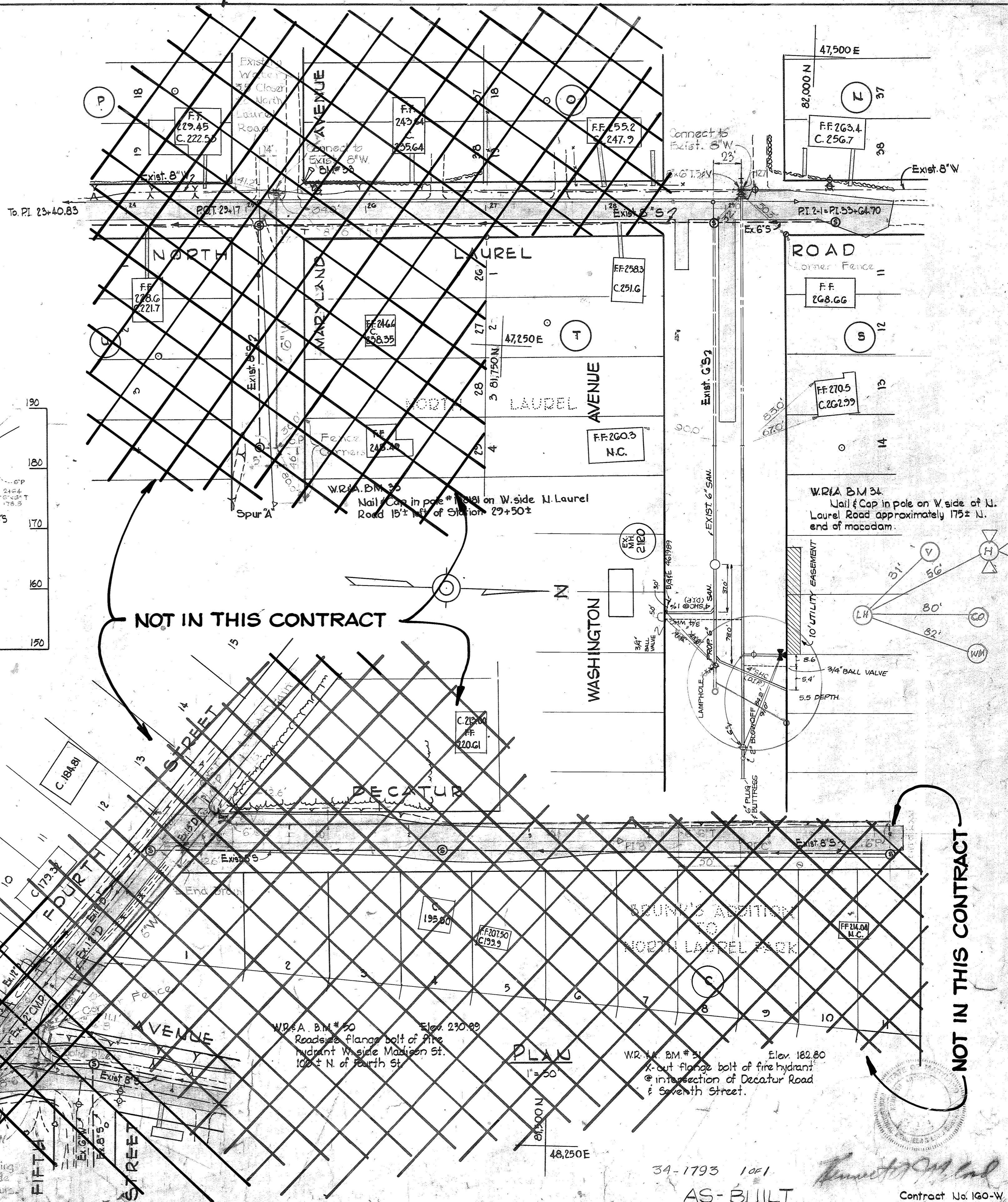


**DECATUR PLACE**



**PROFILE**

Scale: Hor 1" = 100'  
Vert 1" = 10'



**NOT IN THIS CONTRACT**

**NOT IN THIS CONTRACT**

WHITMAN, REQUARDT & ASSOCIATES  
ENGINEERS  
1304 ST. PAUL ST.  
BALTIMORE, MARYLAND

HOWARD COUNTY METROPOLITAN COMMISSION  
DATE: 4/67  
W. J. Hillier  
CHIEF ENGINEER

CONTRACT NO. 34-1793

PLAN AND PROFILE OF  
WATER MAINS

ELECTION DISTRICT  
GUILFORD NO. 6

DRAWING NO. 1 OF 1  
SCALE AS SHOWN

AS-BUILT

Contract No. 160-W