

GENERAL NOTES

- APPROXIMATE LOCATION OF EXISTING MAINS ARE SHOWN. THE CONTRACTOR SHALL TAKE ALL NECESSARY PRECAUTIONS TO PROTECT EXISTING MAINS AND SERVICES AND MAINTAIN UNINTERRUPTED SUPPLY. ANY DAMAGE INCURRED SHALL BE REPAIRED IMMEDIATELY TO THE SATISFACTION OF THE ENGINEER AT THE CONTRACTOR'S EXPENSE.
- ALL HORIZONTAL CONTROLS ARE BASED ON MARYLAND STATE COORDINATES.
- ALL VERTICAL CONTROLS ARE BASED ON U.S.G.S. DATA.
- ALL PIPE ELEVATIONS SHOWN ARE \ominus INVERT ELEVATIONS.
- CLEAR ALL UTILITIES BY A MINIMUM OF 6".
- FOR DETAILS NOT SHOWN ON THE DRAWINGS, AND FOR MATERIALS AND CONSTRUCTION METHODS, USE HOWARD COUNTY DESIGN MANUAL, VOLUME IV, STANDARD SPECIFICATIONS AND DETAILS FOR CONSTRUCTIONS. THE CONTRACTOR SHALL HAVE A COPY OF VOLUME IV ON THE JOB.
- WHERE TEST PITS HAVE BEEN MADE ON EXISTING UTILITIES, THEY ARE NOTED BY THE SYMBOL \blacksquare AT THE LOCATION OF THE TEST PIT. A NOTE OR NOTES CONTAINING THE RESULTS OF THE TEST PIT OR PITS IS INCLUDED ON THE DRAWINGS. EXISTING UTILITIES IN THE VICINITY OF THE PROPOSED WORK FOR WHICH TEST PITS HAVE NOT BEEN DUG SHALL BE VERIFIED BY THE CONTRACTOR TO HIS OWN PERSONAL SATISFACTION. ANY DAMAGE TO EXISTING FACILITIES DUE TO THE CONTRACTOR'S NEGLIGENCE SHALL BE REPAIRED AT THE CONTRACTOR'S EXPENSE.
- THE CONTRACTOR SHALL NOTIFY THE FOLLOWING UTILITIES OR AGENCIES AT LEAST FIVE WORKING DAYS BEFORE STARTING WORK SHOWN ON THESE PLANS:

STATE HIGHWAY ADMINISTRATION	531-5533
BALTIMORE GAS AND ELECTRIC CO. - CONTRACTOR SERVICES	850-4620
BALTIMORE GAS AND ELECTRIC CO. - UNDERGROUND DAMAGE CONTROL	859-9004
BALTIMORE GAS AND ELECTRIC CO. - TROUBLE SHOOTING	298-9001
MISS UTILITY	1-559-0100
COLONIAL PIPELINE CO.	795-1390
BUREAU OF UTILITIES, HO.CO. DEPARTMENT OF PUBLIC WORKS	992-2366
C & P TELEPHONE CO.	1-800-257-7777
- TREES AND SHRUBS ARE TO BE PROTECTED FROM DAMAGE TO MAXIMUM EXTENT. TREES AND SHRUBS LOCATED WITHIN THE CONSTRUCTION STRIP ARE NOT TO BE REMOVED OR DAMAGED BY THE CONTRACTOR.
- THE CONTRACTOR SHALL REMOVE TREES, STUMPS AND ROOTS ALONG LINE OF EXCAVATION. PAYMENT FOR SUCH REMOVAL SHALL BE INCLUDED IN THE UNIT PRICE BID FOR CONSTRUCTION OF THE MAIN.
- ALL WATER MAINS TO BE D.I.P. CLASS 52 UNLESS OTHERWISE NOTED.
- TOPS OF ALL WATER MAINS TO HAVE A MINIMUM OF 3-1/2' COVER UNLESS OTHERWISE NOTED.
- VALVES ADJACENT TO TEES SHALL BE STRAPPED TO TEES.
- ALL FITTINGS SHALL BE BUTTRESSED OR ANCHORED WITH CONCRETE IN ACCORDANCE WITH THE STANDARD DETAILS UNLESS OTHERWISE PROVIDED FOR ON THE DRAWINGS.
- FIRE HYDRANTS SHALL BE SET TO THE BURY LINE ELEVATION SHOWN ON THE DRAWINGS. ALL FIRE HYDRANTS SHALL BE STRAPPED AND BUTTRESSED WITH CONCRETE IN ACCORDANCE WITH THE STANDARD DETAILS. SOIL AROUND THE FIRE HYDRANT SHALL BE COMPACTED IN ACCORDANCE WITH SECTION 1003 OF THE STANDARD SPECIFICATIONS.
- THE CONTRACTOR SHALL NOT OPERATE ANY WATER MAIN VALVES ON THE EXISTING WATER SYSTEM.
- ALL WATER HOUSE CONNECTIONS SHALL BE FOR INSIDE METER SETTING UNLESS OTHERWISE NOTED ON PLANS OR SPECIFICATIONS.
- SERVICE CLAMPS ARE TO HAVE STAINLESS STRAPES.

PLAN
SCALE: 1"=50'

SEDIMENT CONTROL MEASURES FOR THIS CONTRACT WILL BE IMPLEMENTED IN ACCORDANCE WITH SECTION 219 OF THE SPECIFICATIONS AND AS SHOWN ON SDP-86-88

REVIEW FOR HOWARD SOIL CONSERVATION DISTRICT AND MEETS TECHNICAL REQUIREMENTS.

James M. Hahn 12-3-87
U.S. SOIL CONSERVATION SERVICE DATE

THIS PLAN IS APPROVED FOR SOIL EROSION AND SEDIMENT CONTROL BY THE HOWARD SOIL CONSERVATION DISTRICT.

Stephen L. Fisher 12/3/87
HOWARD SOIL CONSERVATION DISTRICT DATE

Item	Quantities		Material Supplier
	Estimated	As Built	
8" W	1165 LF	1258 LF	ASP Supplies
6" W	171 LF	550 LF	"
8" V	4 ea.	4	Kennedy
6" V	7 ea.	7	"
8" x 6" T	2 ea.	2	ASP Supplies
6" x 4" T	4 ea.	4	"
8" x 6" R	3 ea.	3	"
Fire Hydrant	4 ea.	4	"
6" x 4" T		2	"

DEPARTMENT OF PUBLIC WORKS
HOWARD COUNTY, MARYLAND

James M. Hahn 12/6/87
DIRECTOR OF PUBLIC WORKS DATE

Richard B. Bennett 12-8-87
CHIEF, BUREAU OF UTILITIES DATE

William E. Rouse 12-3-87
CHIEF, BUREAU OF ENGINEERING DATE

Arthur E. Muegge 12-8-87
CHIEF, LAND DEVELOPMENT DIVISION DATE

THE RIEMER GROUP INC.
3105 NORTH RIDGE ROAD
ELLCOTT CITY, MARYLAND
(301) 461-2690



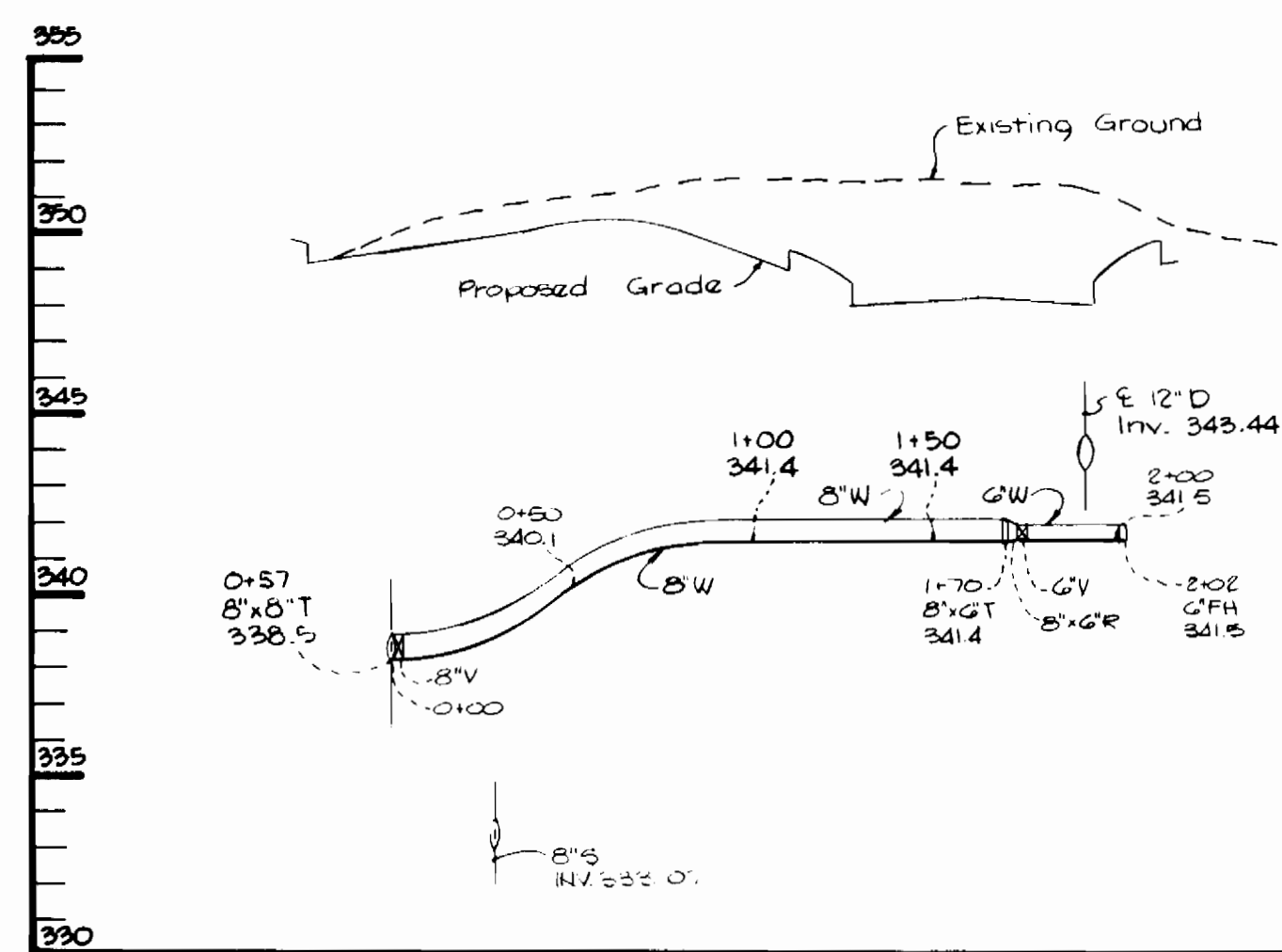
DES: W.C.W.	
DRN: D.D.B.	
CHK:	
DATE:	
BY NO.	
REVISION	
DATE	

600' SCALE MAP NO. 43 BLOCK NO.

SAMMIS BUSINESS CENTER AT COLUMBIA
COLUMBIA GATEWAY
6th ELECTION DISTRICT
HOWARD COUNTY, MARYLAND
CONTRACT NO. 44-1734-D

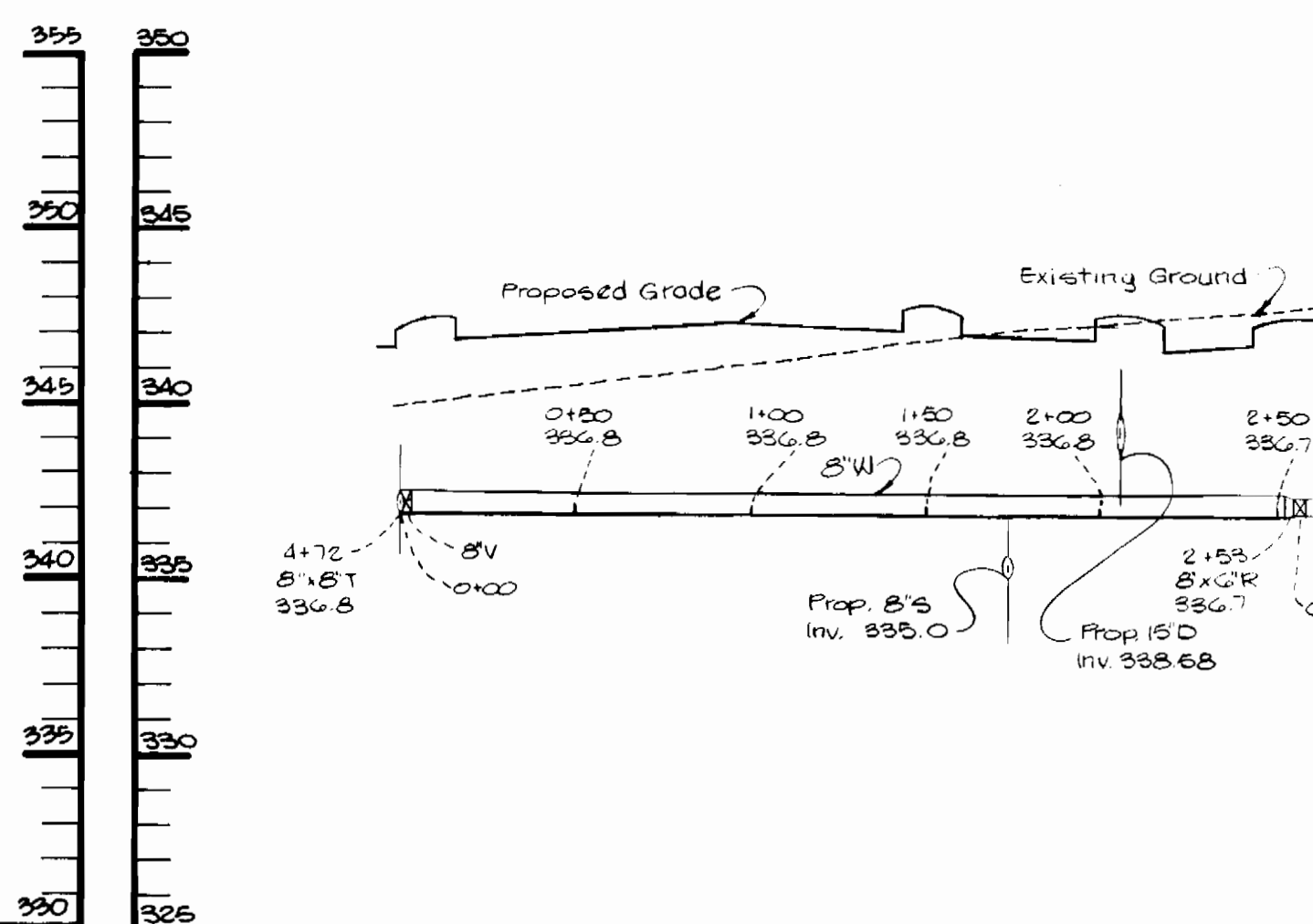
SCALE AS SHOWN

SHEET 1 OF 2



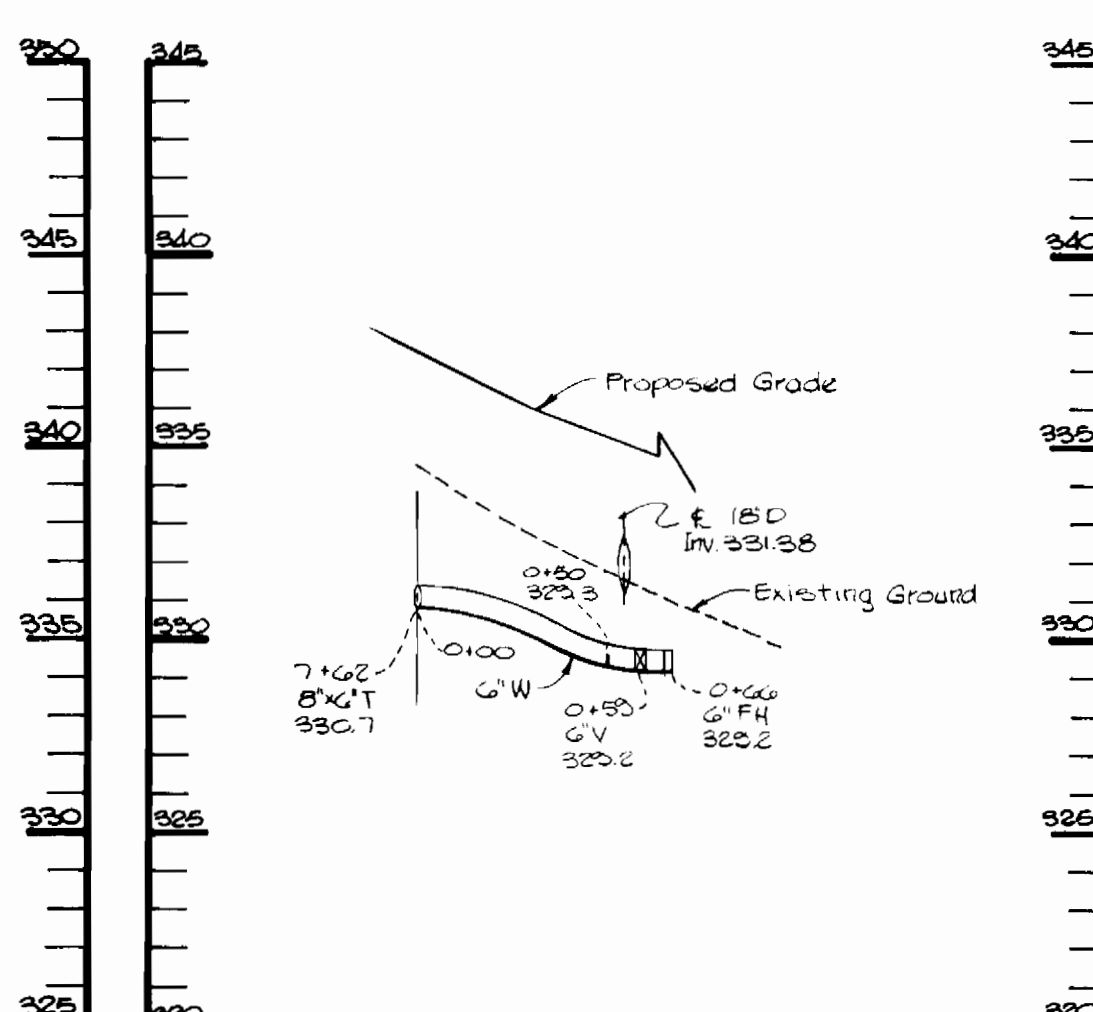
PROFILE

Scale: Horiz. 1"=50'
Vert. 1"=5'



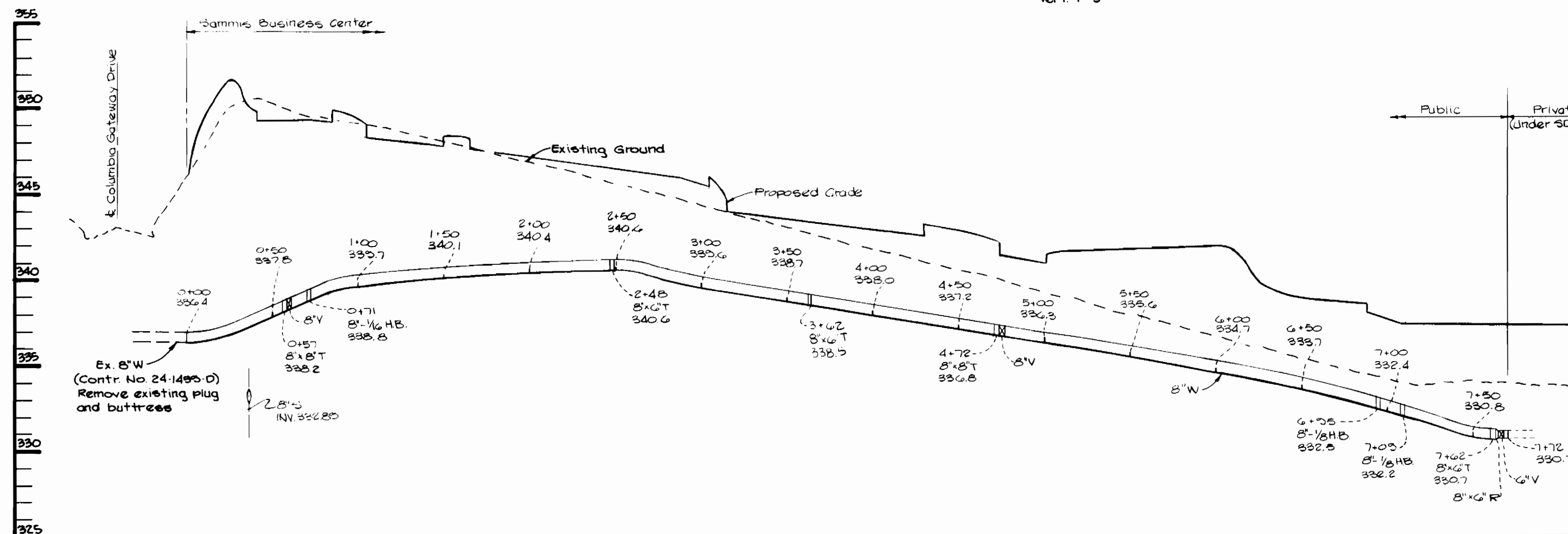
PROFILE

Scale: Horiz. 1"=50'
Vert. 1"=5'



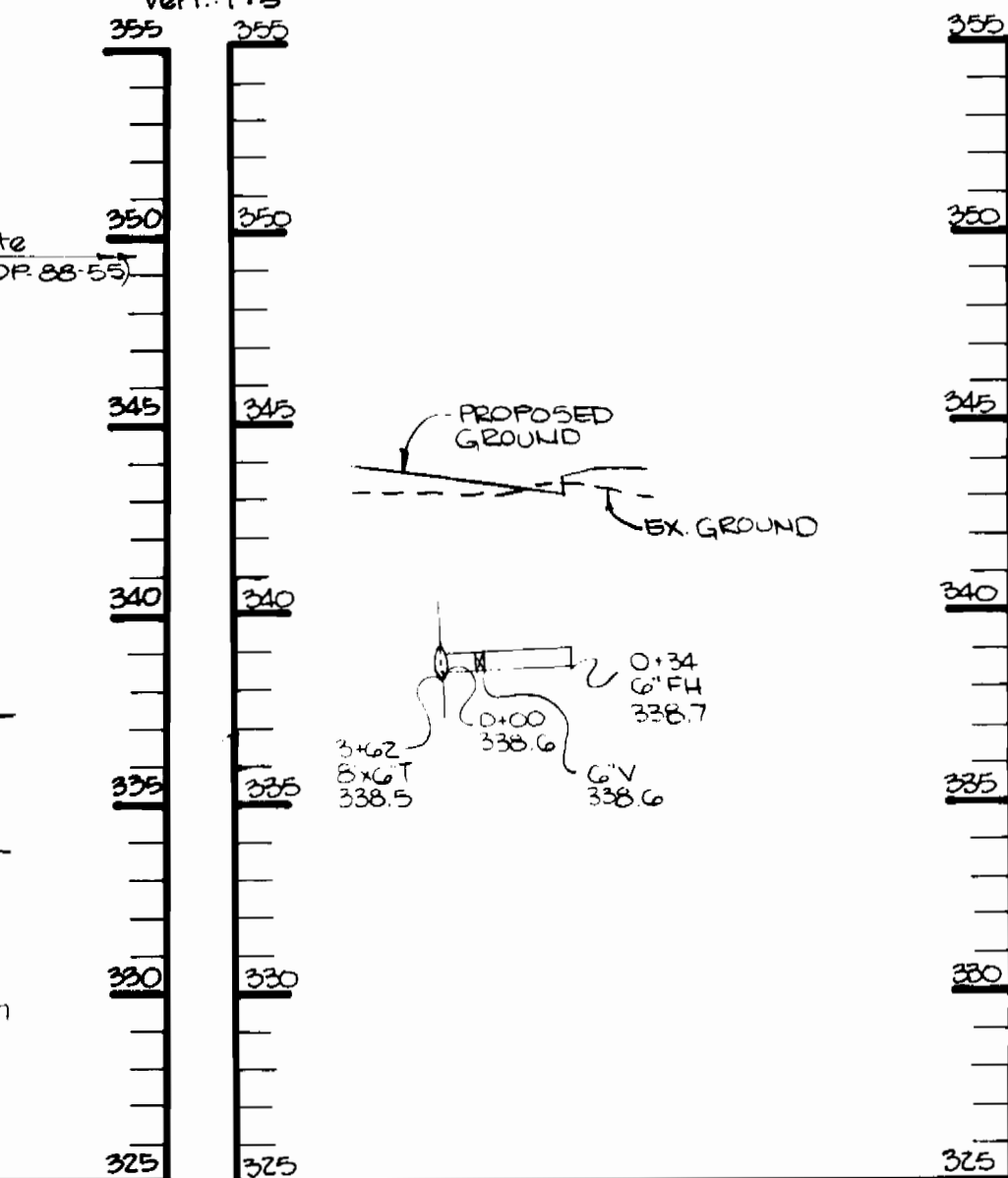
PROFILE

Scale: Horiz. 1"=50'
Vert. 1"=5'



PROFILE

SCALE: HORIZ. 1"=50'
VERT. 1"=5'



PROFILE

SCALE: HORIZ. 1"=50'
VERT. 1"=5'

DEPARTMENT OF PUBLIC WORKS
HOWARD COUNTY, MARYLAND

THE RIEMER GROUP INC.
3105 NORTH RIDGE ROAD
ELLCOTT CITY, MARYLAND
(301) 461-2690



DES: W.C.W.	
DRN: W.L.D.	
CHK:	
DATE:	
BY:	
NO.:	
REVISION:	
DATE:	

PROFILE OF A WATER MAIN

SAMMIS BUSINESS CENTER AT COLUMBIA
COLUMBIA GATEWAY
6th ELECTION DISTRICT
HOWARD COUNTY, MARYLAND
CONTRACT NO. 44-1734-D

SCALE
AS
SHOWN

SHEET
2 OF 2

BUILT 8 16 58