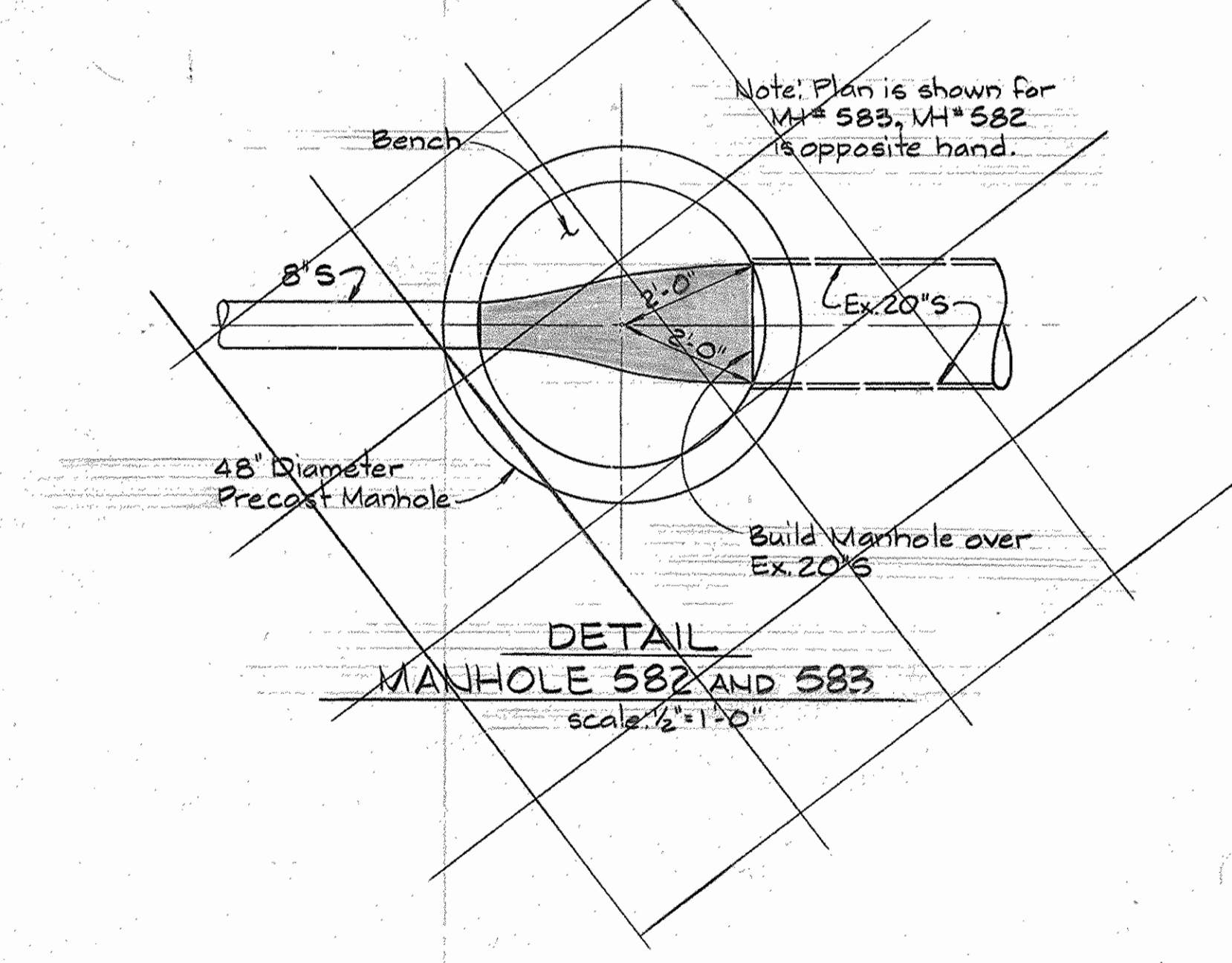
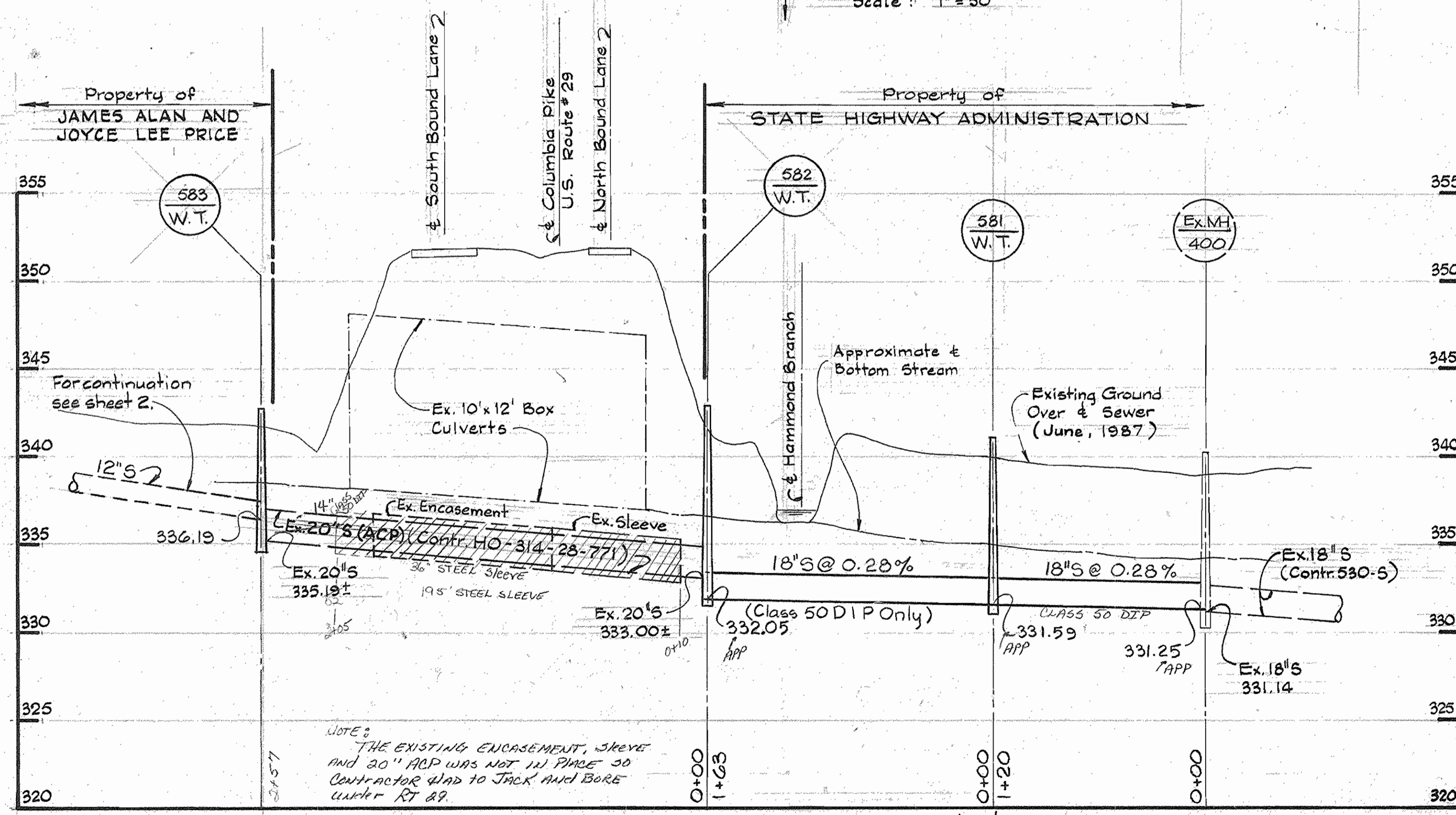


- GENERAL NOTES**
- APPROXIMATE LOCATION OF EXISTING MAINS ARE SHOWN. THE CONTRACTOR SHALL TAKE ALL NECESSARY PRECAUTIONS TO PROTECT EXISTING MAINS AND SERVICES AND MAINTAIN UNINTERRUPTED SUPPLY. ANY DAMAGE INCURRED SHALL BE REPAIRED IMMEDIATELY TO THE SATISFACTION OF THE ENGINEER, AT THE CONTRACTOR'S EXPENSE.
 - ALL HORIZONTAL CONTROLS ARE BASED ON MARYLAND STATE COORDINATES.
 - ALL VERTICAL CONTROLS ARE BASED ON U.S.G.S. DATUM.
 - ALL PIPE ELEVATIONS SHOWN ARE INVERT ELEVATIONS.
 - CLEAR ALL UTILITIES BY A MINIMUM OF 6". CLEAR ALL POLES BY 2'-0" MINIMUM OR TUNNEL AS REQUIRED.
 - FOR DETAILS NOT SHOWN ON THE DRAWINGS, AND FOR MATERIALS AND CONSTRUCTION METHODS USE HOWARD COUNTY DESIGN MANUAL, VOLUME IV, STANDARD SPECIFICATIONS AND DETAILS FOR CONSTRUCTION. THE CONTRACTOR SHALL HAVE A COPY OF VOLUME IV ON THE JOB.
 - WHERE TEST PITS HAVE BEEN MADE ON EXISTING UTILITIES, THEY ARE NOTED BY THE SYMBOL AT THE LOCATION OF THE TEST PIT. A NOTE OR NOTES CONTAINING THE RESULTS OF THE TEST PIT OR PITS IS INCLUDED ON THE DRAWINGS. EXISTING UTILITIES IN THE VICINITY OF THE PROPOSED WORK FOR WHICH TEST PITS HAVE BEEN DUG SHALL BE VERIFIED BY THE CONTRACTOR TO HIS OWN SATISFACTION. ANY DAMAGE TO EXISTING FACILITIES DUE TO THE CONTRACTOR'S NEGLIGENCE SHALL BE REPAIRED AT THE CONTRACTOR'S EXPENSE.
 - CONTRACTOR SHALL NOTIFY THE FOLLOWING UTILITIES OR AGENCIES AT LEAST FIVE WORKING DAYS BEFORE STARTING WORK SHOWN ON THESE PLANS:
 - STATE HIGHWAY ADMINISTRATION - 531-5533
 - BALTIMORE GAS & ELECTRIC CO. - CONTRACTOR SERVICES - 850-4620
 - BALTIMORE GAS & ELECTRIC CO. - UNDER GROUND DAMAGE CONTROL - 859-9004
 - BALTIMORE GAS & ELECTRIC CO. - TROUBLE SHOOTING - 298-9001
 - MISS UTILITY - 1 - 559-0100
 - COLONIAL PIPELINE CO. - 795-1390
 - C&P TELEPHONE CO. - 1 - 800-257-7777
 - BUREAU OF UTILITIES, HOWARD COUNTY DEPARTMENT OF PUBLIC WORKS - 992-2366
 - TREES AND SHRUBS ARE TO BE PROTECTED FROM DAMAGE TO MAXIMUM EXTENT. TREES AND SHRUBS LOCATED WITHIN THE CONSTRUCTION STRIP ARE NOT TO BE REMOVED OR DAMAGED BY THE CONTRACTOR.
 - CONTRACTOR SHALL REMOVE TREES, STUMPS AND ROOTS ALONG LINE OF EXCAVATION.
 - ALL SEWER MAINS SHALL BE C.S.P.X., D.I.P., V.C.P.X., A.C.P. CLASS 2400 OR P.V.C. UNLESS OTHERWISE NOTED.
 - THE CONTRACTOR SHALL PROVIDE A JOINT IN ALL SEWER MAINS WITHIN 2'-0" OF EXTERIOR MANHOLE WALL.
 - ALL MANHOLES SHALL BE 4'-0" INSIDE DIAMETER UNLESS OTHERWISE NOTED.
 - MANHOLES SHOWN WITH 12" AND 16" WALLS ARE FOR BRICK MANHOLES ONLY.
 - MANHOLES DESIGNATED W.T. IN PLAN AND PROFILE SHALL HAVE WATERTIGHT FRAME AND COVERS, STANDARD DETAIL 65.52. WHERE WATERTIGHT MANHOLE FRAME AND COVER IS USED, SET TOP OF FRAME 1.5' ABOVE FINISHED GRADE UNLESS OTHERWISE NOTED ON THE DRAWINGS.
 - STRAW BALE DIKE AND SILT FENCE ARE INTERCHANGEABLE.
 - FOR MANHOLES IN OPEN SPACE OR OUTFALL, SET TOP OF FRAME 1.5' ABOVE FINISHED GRADE UNLESS OTHERWISE NOTED ON THE DRAWINGS.



QUANTITIES

ITEM	BID	AS BUILT	MATERIAL/SUPPLIER
14" Sewer L.F.	120	257	GRIFFIN PIPE PRODUCTS
18" D.I.P. Sewer L.F.	170	283	GRIFFIN PIPE PRODUCTS
Sewer Manholes Ea.	5	5	ATLANTIC PRECAST
12" Sewer L.F.	510	504	GRIFFIN PIPE PRODUCTS
36" STEEL SLEEVE		195	SEVEREN STEEL
24" STEEL SLEEVE		90 LF	SEVEREN STEEL

REVIEWED FOR HOWARD SOIL CONSERVATION DISTRICT AND MEETS TECHNICAL REQUIREMENT

James Alan Price
DATE: 4-22-88

SIGNATURE: _____ DATE: _____
U.S. SOIL CONSERVATION SERVICE

This Development Plan is approved for soil Erosion and Sediment Control by the Howard County Conservation District.

APPROVED: *Stephen L. Price* DATE: 4/26/88
HOWARD S.C.D.

DEPARTMENT OF PUBLIC WORKS
HOWARD COUNTY, MARYLAND

James Alan Price 4-22-88
DIRECTOR OF PUBLIC WORKS - DATE

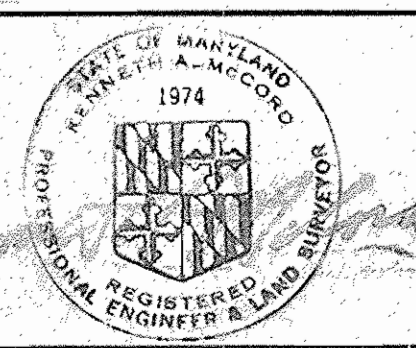
Robert H. Benner 4-21-88
CHIEF - BUREAU OF UTILITIES - DATE

William E. Ryan 4-22-88
CHIEF - BUREAU OF ENGINEERING - DATE

Joseph L. ... 4/21/88
CHIEF - LAND DEVELOPMENT DIVISION - DATE

WHITMAN, REQUARDT
AND ASSOCIATES
ENGINEERS

2315 ST. PAUL ST.
BALTIMORE, MARYLAND



DES: S.J.
DRN: Q.D.N.
CHK: R.B.N.

DATE: _____

R.B.N. 1 Revised Pipe Size 6/15

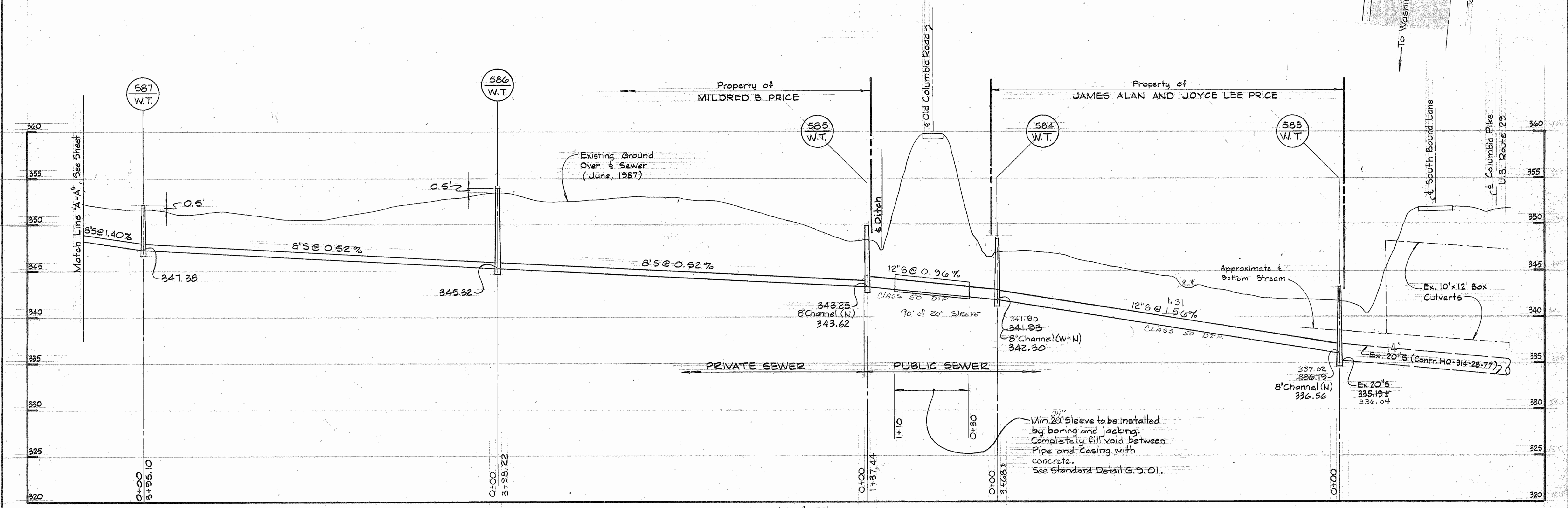
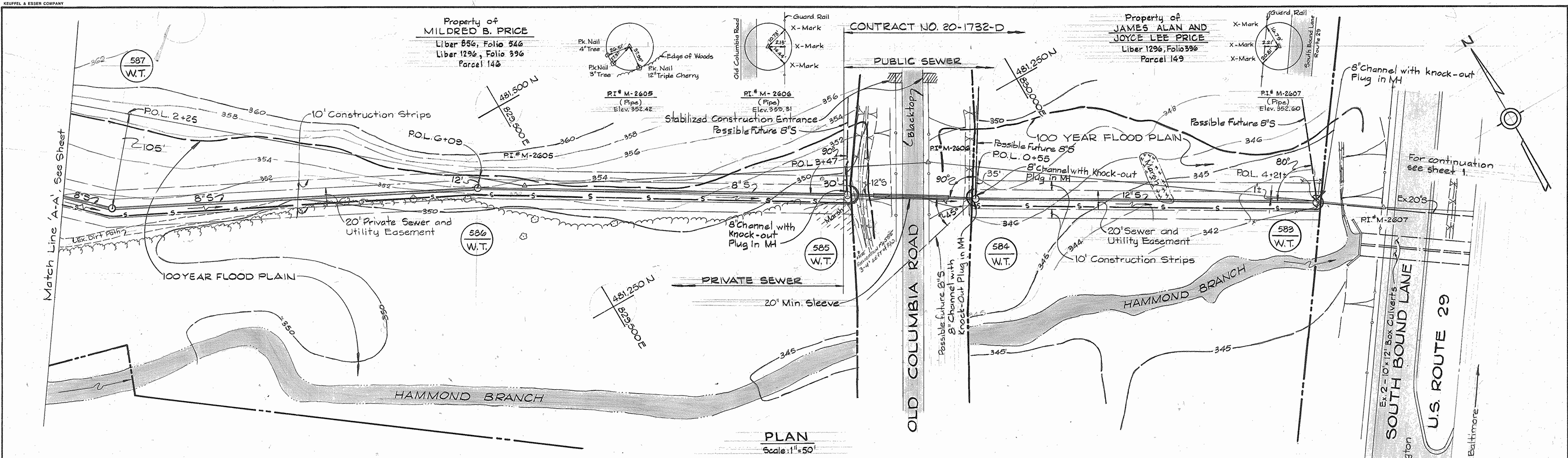
BY NO. REVISION DATE

VICINITY MAP
PLAN & PROFILE
OF SEWER MAINS

600' SCALE MAP NO. 41 BLOCK NO. _____

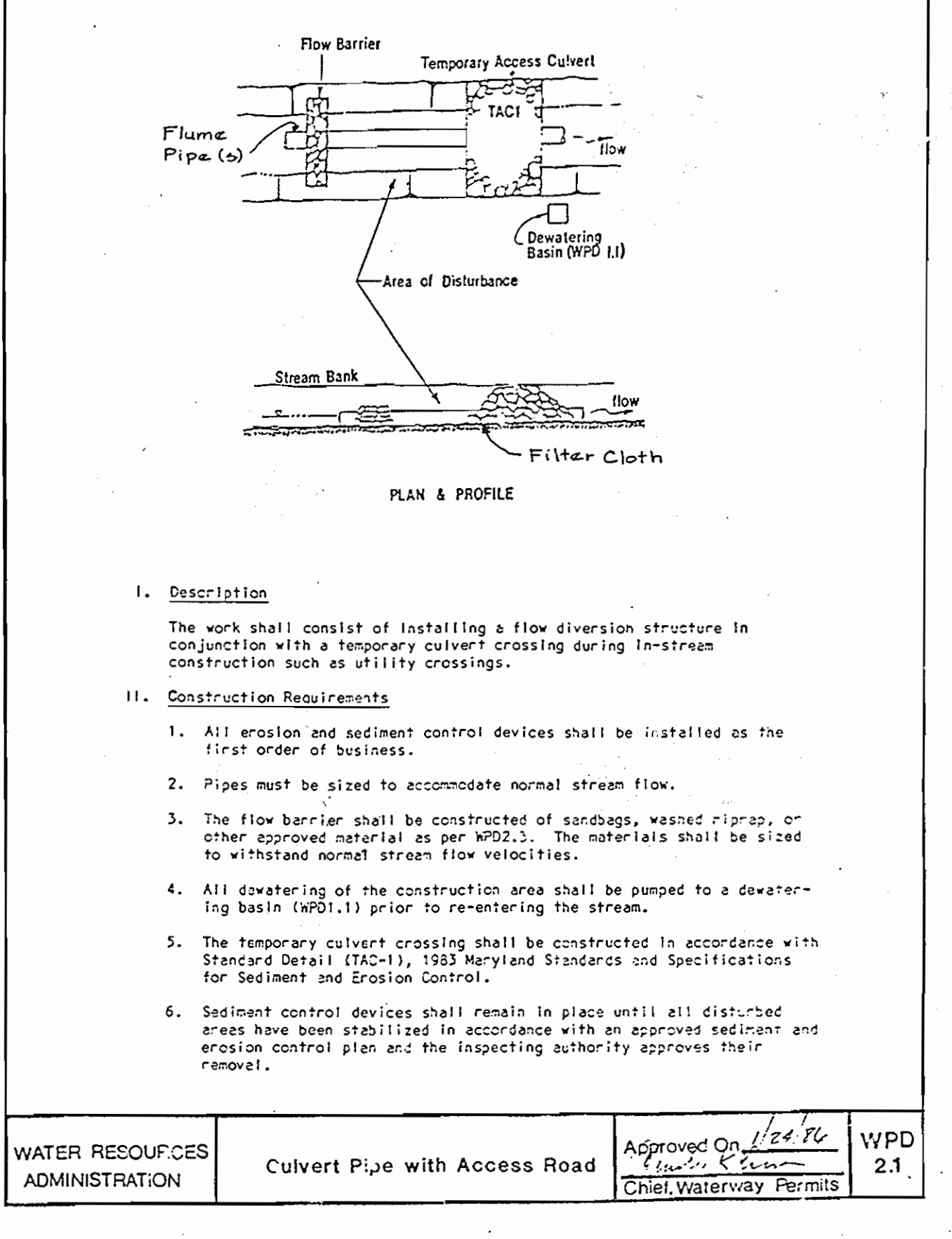
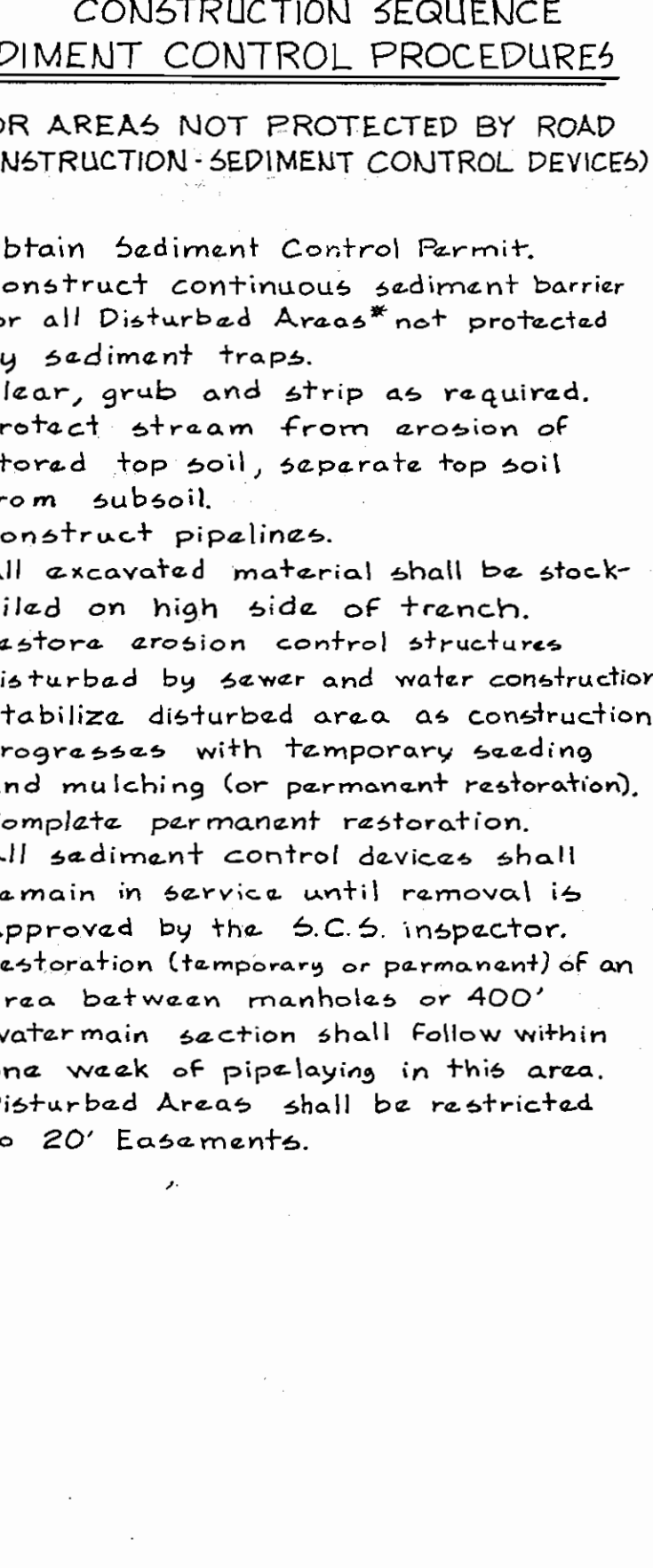
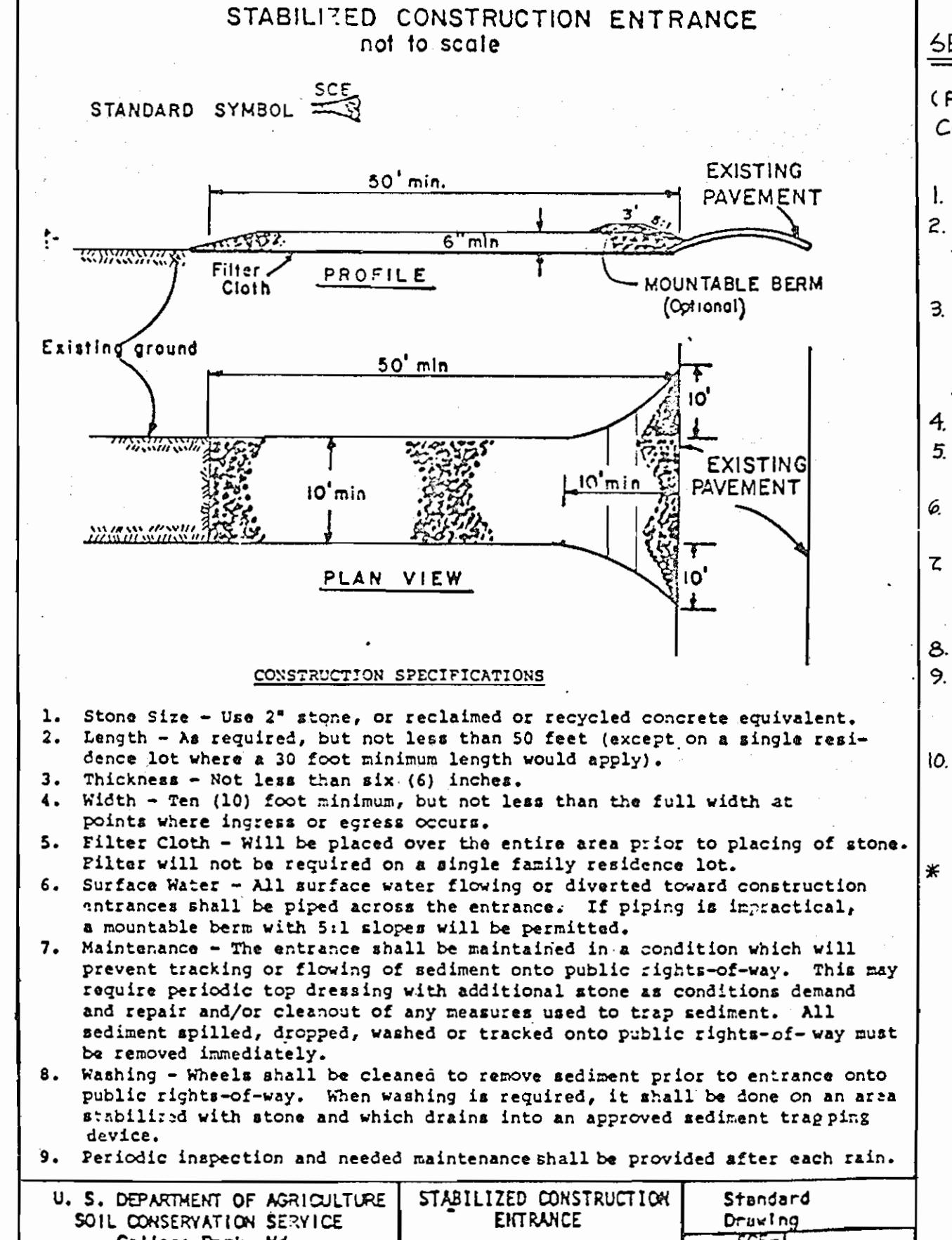
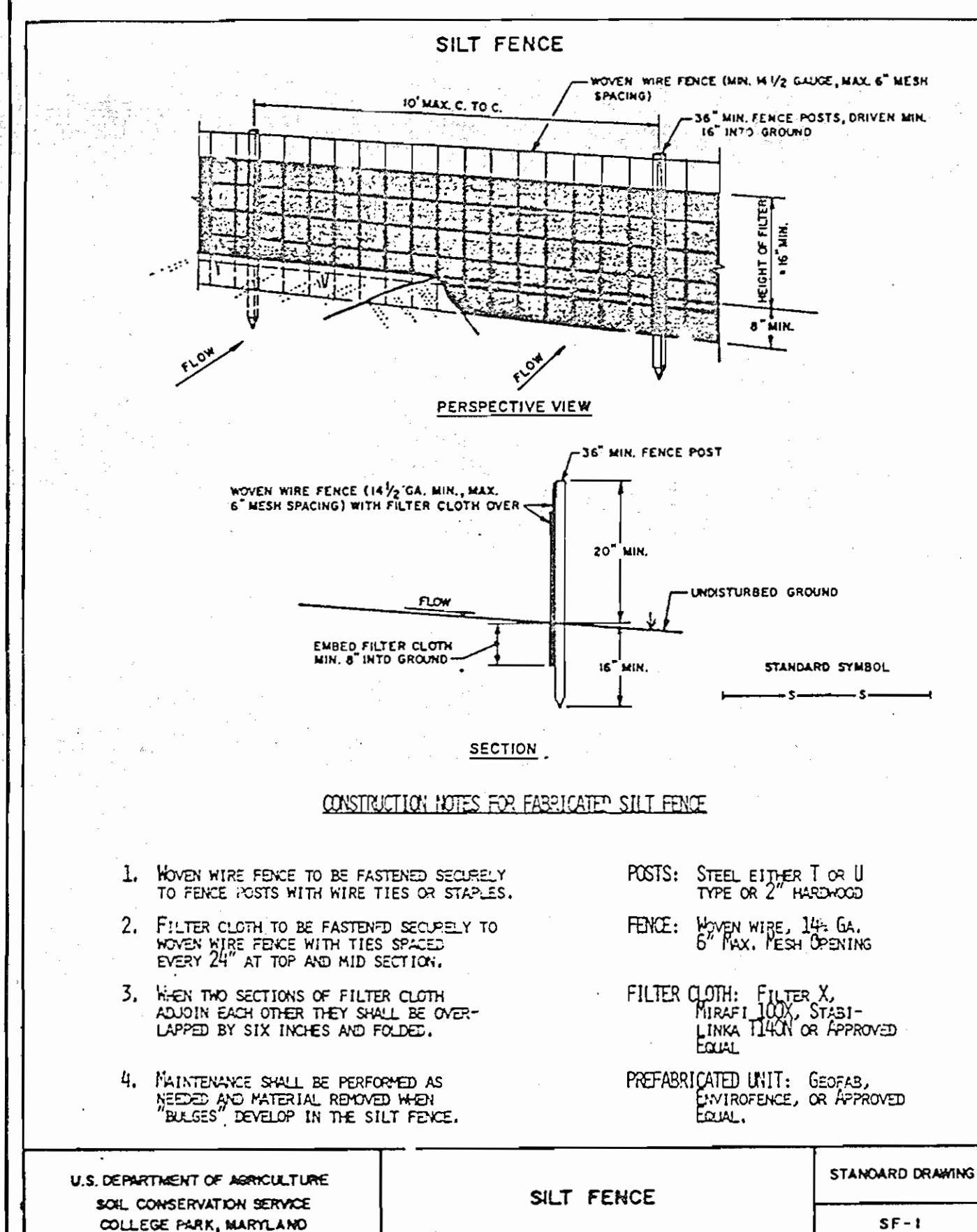
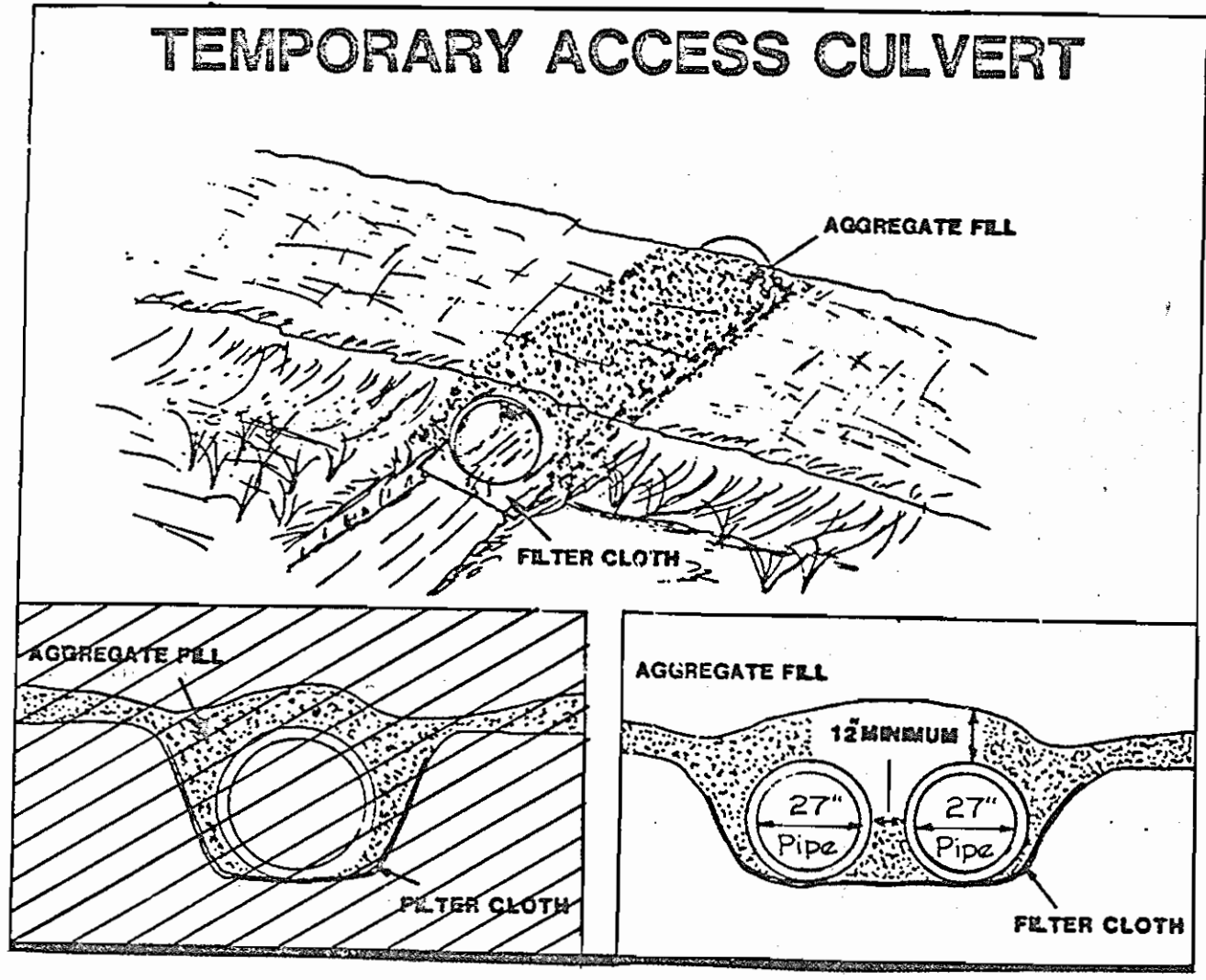
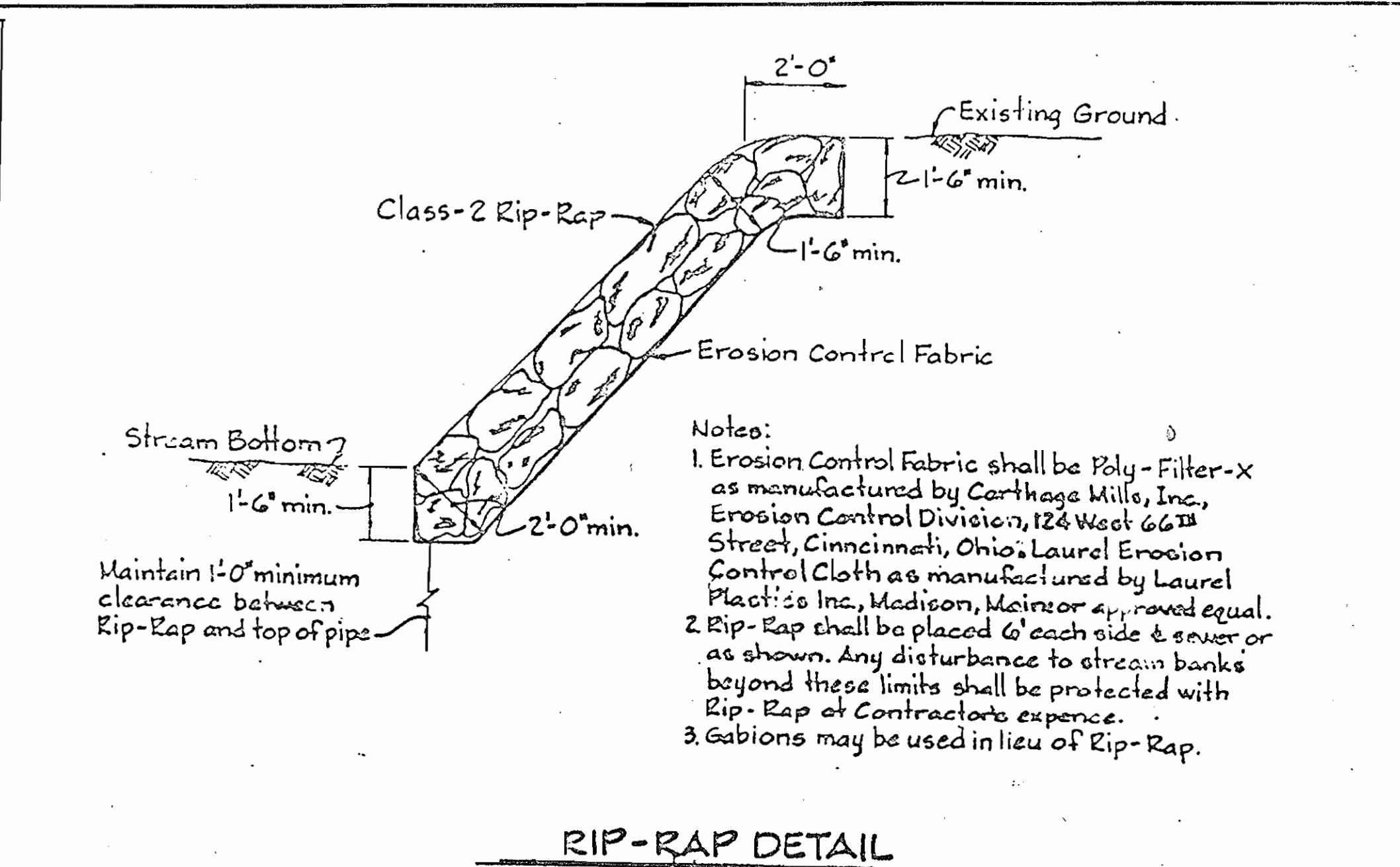
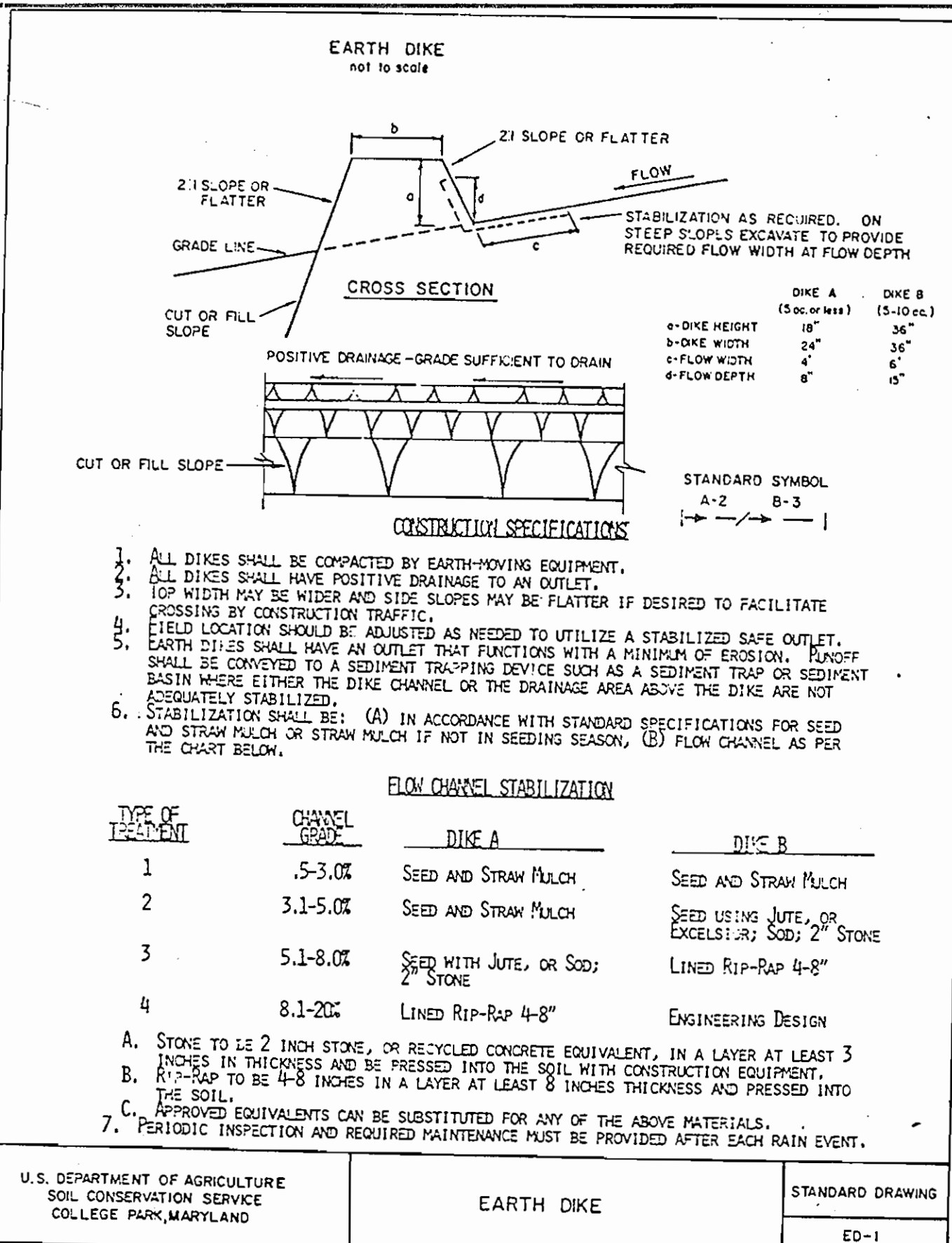
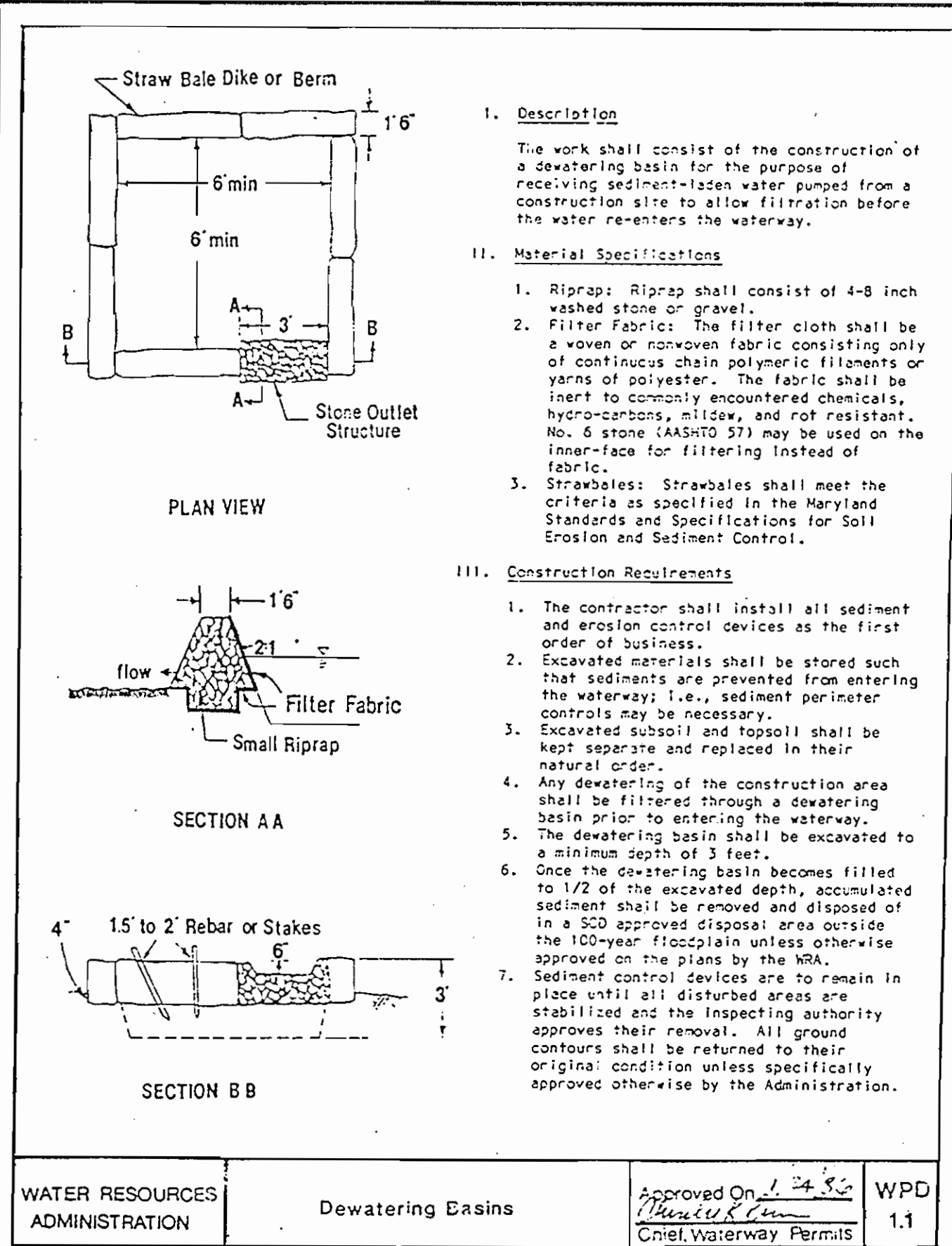
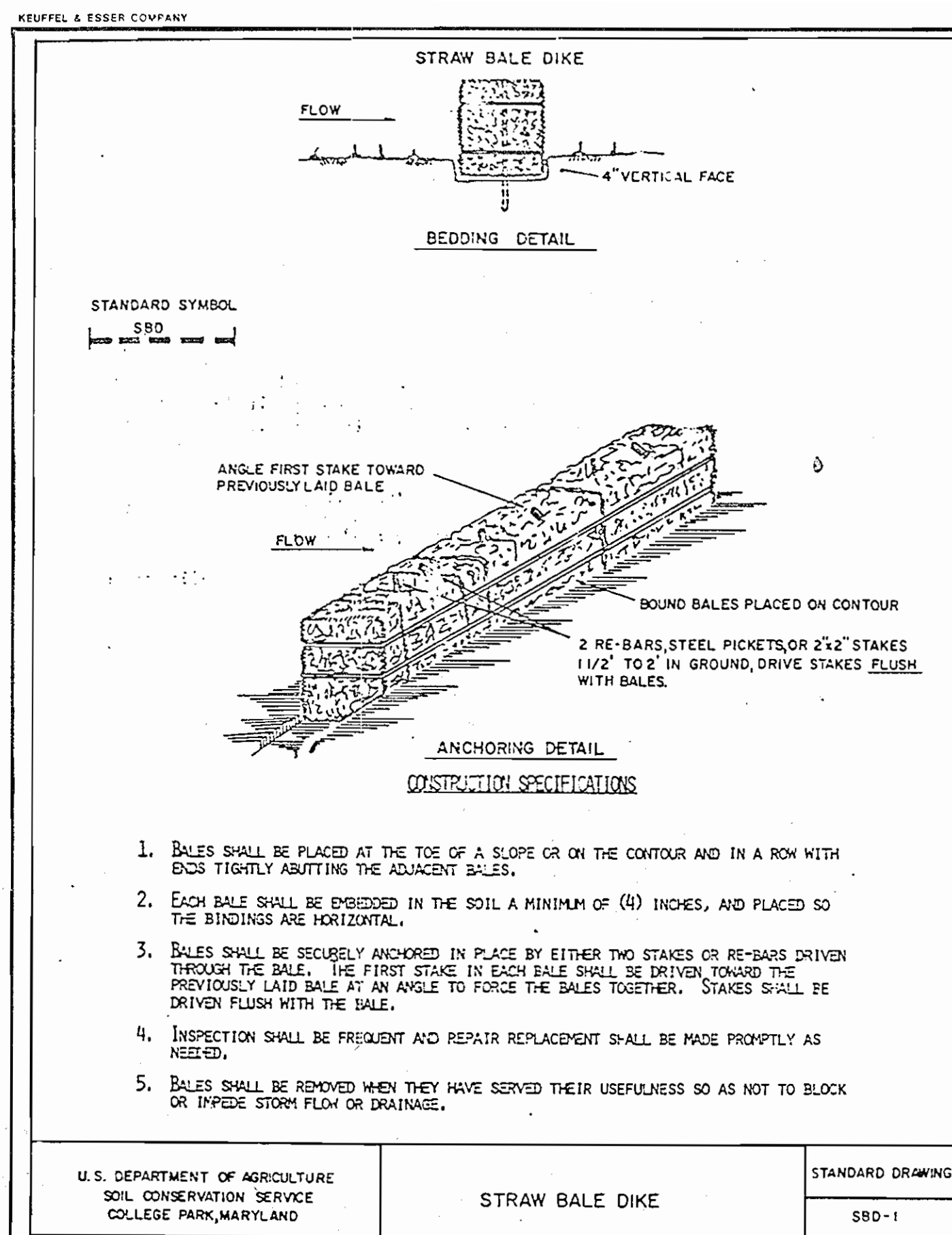
WESTVACO CORPORATION
LAUREL RESEARCH CENTER
JOHNS HOPKINS ROAD
ELECTION DISTRICT 5 & 6
CONTRACT NO. 20-1732-D

SCALE AS SHOWN
SHEET 1 OF 3



DEPARTMENT OF PUBLIC WORKS HOWARD COUNTY, MARYLAND Director of Public Works - DATE Chief - Bureau of Utilities - DATE	WHITMAN, REQUARDT AND ASSOCIATES ENGINEERS 2315 ST. PAUL ST. BALTIMORE, MARYLAND		DES: S.J.		PLAN & PROFILE OF SEWER MAINS	WESTVACO CORPORATION LAUREL RESEARCH CENTER JOHNS HOPKINS ROAD ELECTION DISTRICT 5 & 6 CONTRACT NO. 20-1732-D	SCALE AS SHOWN SHEET 2 OF 3
			DRN: Q.D.N.				

AS-BUILT 2-3-89 AS-BUILT 1-6-89 April 13, 1988



DEPARTMENT OF PUBLIC WORKS
HOWARD COUNTY, MARYLAND

James M. Lewis 4-27-88
DIRECTOR OF PUBLIC WORKS - DATE

Richard Berman 4-21-88
CHIEF - BUREAU OF UTILITIES - DATE

Whitman, Requardt and Associates Engineers
2315 ST. PAUL ST.
BALTIMORE, MARYLAND

John R. L.P.
4-27-88
CHIEF - LAND DEVELOPMENT DIVISION - DATE

WHITMAN, REQUARDT AND ASSOCIATES ENGINEERS
2315 ST. PAUL ST. BALTIMORE, MARYLAND

DES: J.W.B.
CHK: R.L.P.
DATE: _____

SEDIMENT CONTROL DETAILS

600' SCALE MAP NO. 41 BLOCK NO. _____

AS-BUILT 2-3-89

WESTVACO CORPORATION
LAUREL RESEARCH CENTER
JOHNS HOPKINS ROAD
ELECTION DISTRICT 5 & 6
CONTRACT NO. 20-1732-D

SCALE AS SHOWN
SHEET 3 OF 3