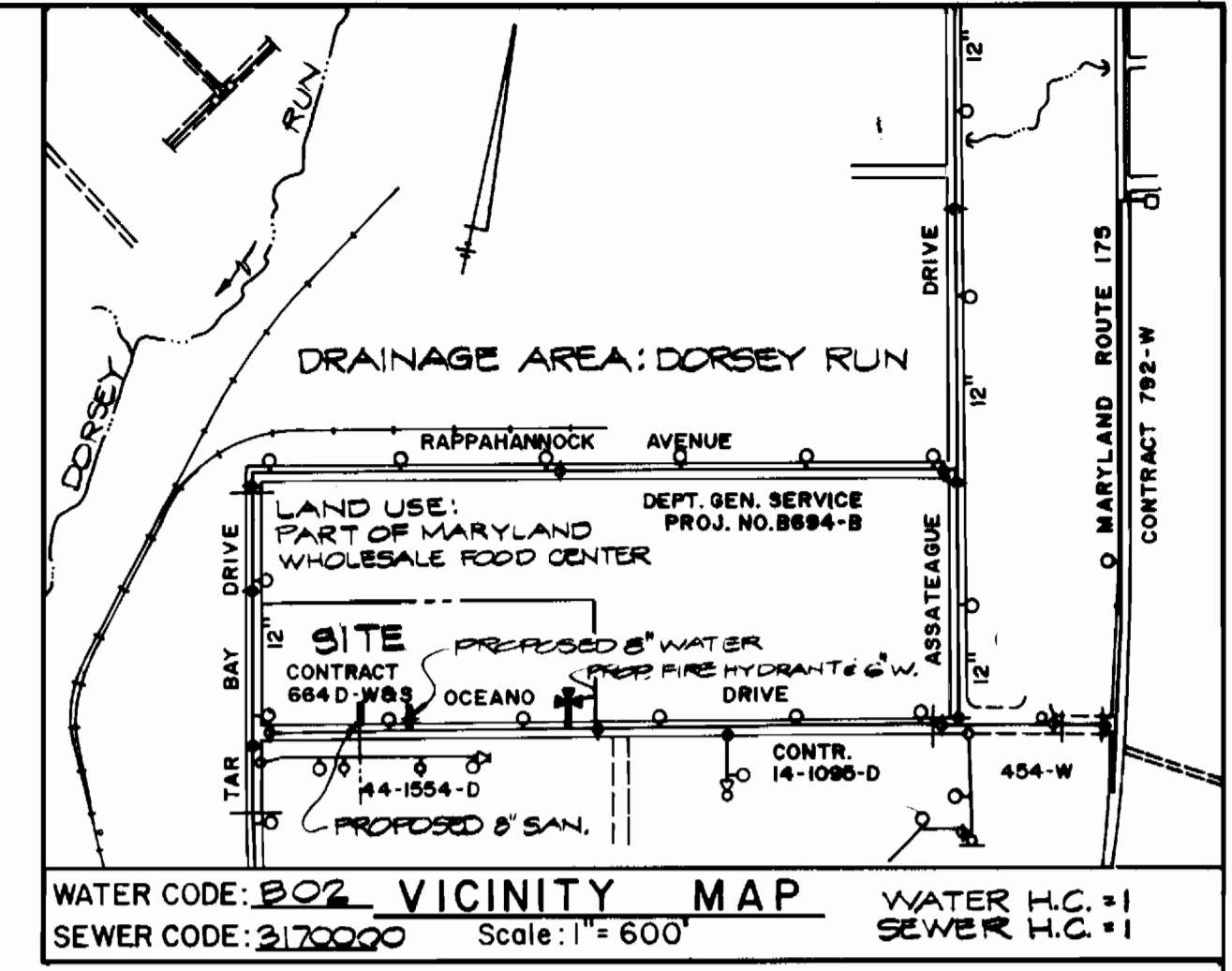


SECTION 2, BLOCK 'A'  
PARCEL 'E'  
PLAT 29, FOLIO 55

SECTION 2, BLOCK 'A'  
PARCEL 'D'  
PLAT 24, FOLIO 59

SECTION 2, BLOCK 'A'  
PARCEL 'C'  
PLAT NO. 3687

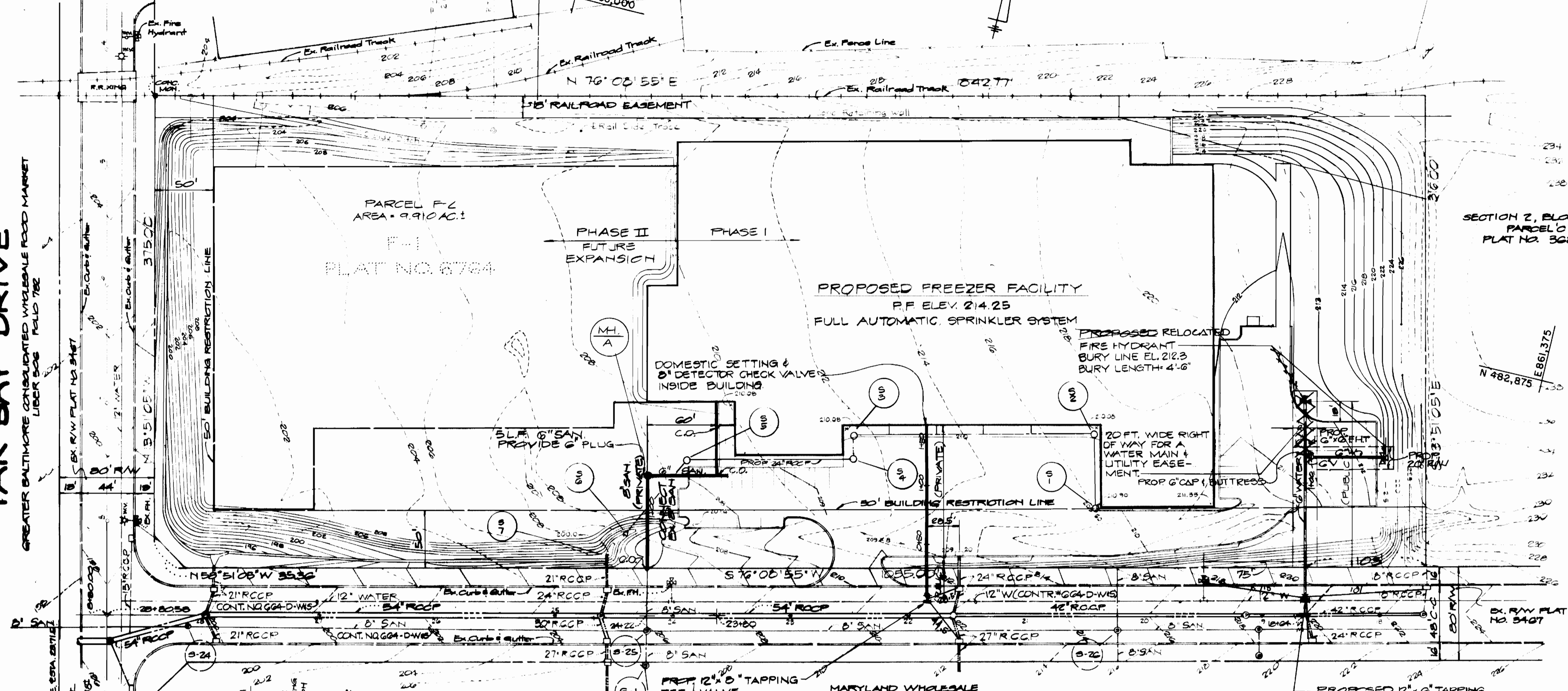


WATER CODE: 202 VICINITY MAP WATER H.C. = 1  
SEWER CODE: 210000 Scale: 1" = 600' SEWER H.C. = 1

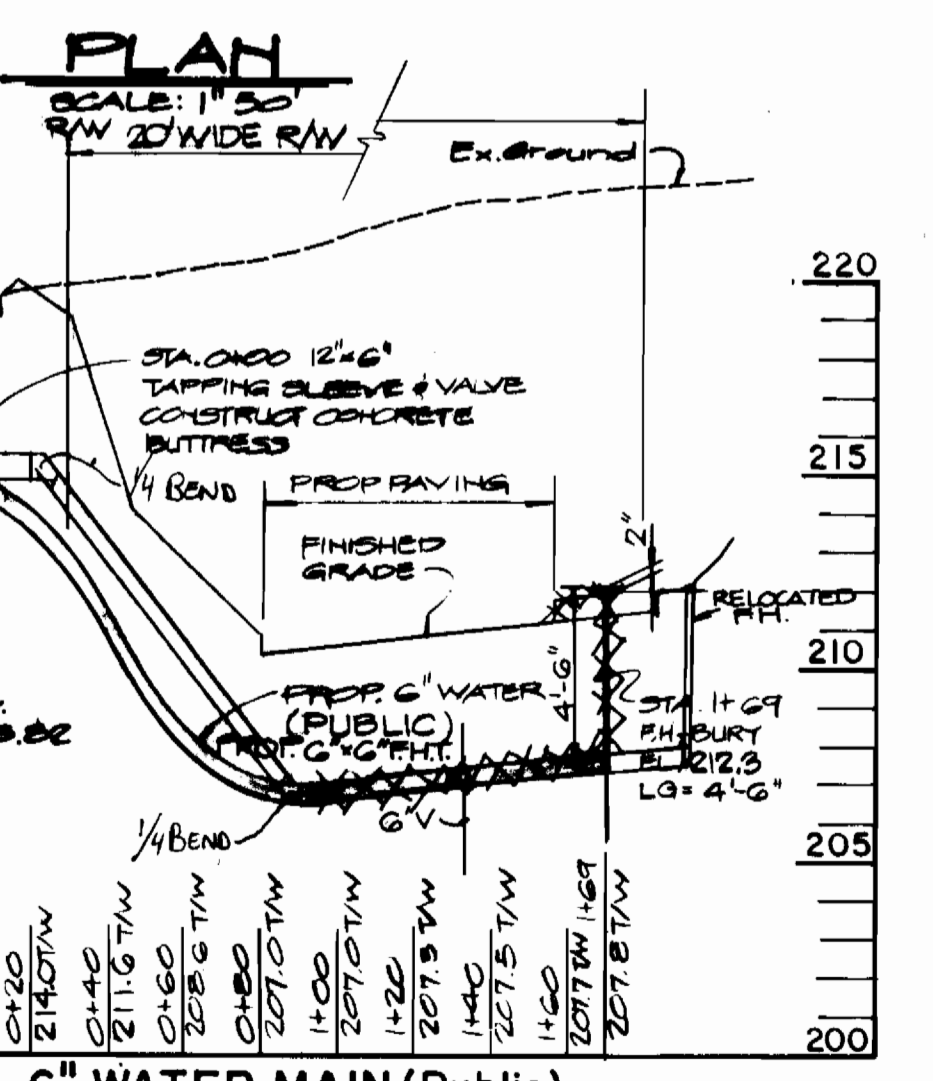
**GENERAL NOTES**

- APPROXIMATE LOCATIONS OF EXISTING UTILITIES ARE SHOWN. THE CONTRACTOR SHALL TAKE ALL NECESSARY PRECAUTIONS TO PROTECT EXISTING MAINS AND SERVICES AND MAINTAIN UNINTERRUPTED SUPPLY. ANY DAMAGE INCURRED SHALL BE REPAIRED IMMEDIATELY TO THE SATISFACTION OF THE ENGINEER AT THE CONTRACTOR'S EXPENSE.
- ALL PIPE ELEVATIONS SHOWN ARE INVERT (I) ELEVATIONS, UNLESS OTHERWISE INDICATED.
- THE CONTRACTOR SHALL LOCATE EXISTING UTILITIES A MINIMUM OF TWO WEEKS IN ADVANCE OF CONSTRUCTION OPERATIONS IN THE VICINITY OF PROPOSED UTILITIES AT HIS OWN EXPENSE. ANY CONFLICTS SHALL BE IMMEDIATELY REPORTED TO THE ENGINEER.
- ALL MATERIALS AND CONSTRUCTION SHALL BE PERFORMED IN ACCORDANCE WITH THE HOWARD COUNTY DESIGN MANUAL, VOLUME II, STANDARD SPECIFICATIONS AND DETAILS FOR CONSTRUCTION.
- CLEAR ALL UTILITIES BY A MINIMUM OF 6 INCHES, CLEAR ALL POLES BY 2'-0" MIN. OR TUNNEL, AS REQUIRED. ANY COSTS INCURRED TO THE CONTRACTOR FOR TUNNELING OR BRACING AT POLES SHALL BE INCLUDED IN THE UNIT PRICES BID FOR PIPE INSTALLATION AS APPLICABLE.
- FOR DETAILS NOT SHOWN ON THE DRAWINGS, AND FOR MATERIALS AND CONSTRUCTION METHODS, USE HOWARD COUNTY DESIGN MANUAL, VOLUME II, STANDARD SPECIFICATIONS AND DETAILS FOR CONSTRUCTION. THE CONTRACTOR SHALL HAVE A COPY OF VOLUME II ON THE JOB.
- WHERE TEST PITS HAVE BEEN MADE ON EXISTING UTILITIES, THEY ARE NOTED BY THE SYMBOL (S) AT THE LOCATION OF THE TEST PIT. A NOTE OR NOTES CONTAINING THE RESULTS OF THE TEST PIT OR PITS IS INCLUDED ON THE DRAWINGS. EXISTING UTILITIES IN THE VICINITY OF THE PROPOSED WORK FOR WHICH TEST PITS HAVE NOT BEEN DUG SHALL BE LOCATED BY THE CONTRACTOR TWO WEEKS IN ADVANCE OF CONSTRUCTION OPERATIONS AT HIS OWN EXPENSE.
- CONTRACTOR SHALL NOTIFY THE FOLLOWING UTILITIES AT LEAST FIVE WORKING DAYS BEFORE STARTING WORK SHOWN ON THESE PLANS:
  - STATE HIGHWAY ADMINISTRATION 531-5533
  - BALTIMORE GAS & ELECTRIC CO. - CONTRACTOR SERVICES 561-2585
  - BALTIMORE GAS & ELECTRIC CO. - UNDERGROUND DAMAGE CONTROL 234-5621
  - BALTIMORE GAS & ELECTRIC CO. - TROUBLE SHOOTING 298-9013
  - MISS UTILITY 1-800-257-7777
  - COLONIAL PIPELINE CO. 795-1350
  - BUREAU OF UTILITIES, HOWARD COUNTY DEPARTMENT OF PUBLIC WORKS 832-2900
- TREES AND SHRUBS ARE TO BE PROTECTED FROM DAMAGE TO MAXIMUM EXTENT. TREES AND SHRUBS LOCATED WITHIN THE CONSTRUCTION STRIP ARE NOT TO BE REMOVED OR DAMAGED BY THE CONTRACTOR.
- CONTRACTOR SHALL REMOVE TREES, STUMPS AND ROOTS ALONG LINE OF EXCAVATION. PAYMENT FOR SUCH REMOVAL SHALL BE INCLUDED IN THE UNIT PRICE BID FOR CONSTRUCTION OF THE MAIN.
- WATER MAINS TO BE D.I.P. UNLESS OTHERWISE NOTED.
- TOP OF ALL WATER MAINS TO HAVE A MINIMUM OF 3' COVER UNLESS OTHERWISE NOTED.
- VALVES ADJACENT TO TEES SHALL BE STRAPPED TO TEES.
- ALL FITTINGS SHALL BE BUTTRESSED OR ANCHORED WITH CONCRETE IN ACCORDANCE WITH THE STANDARD DETAILS UNLESS OTHERWISE PROVIDED FOR ON THE DRAWINGS.
- FIRE HYDRANTS SHALL BE SET TO THE BURY LINE ELEVATIONS SHOWN ON THE DRAWINGS. ALL FIRE HYDRANTS SHALL BE STRAPPED AND BUTTRESSED WITH CONCRETE IN ACCORDANCE WITH STANDARD DETAILS. SOIL AROUND THE FIRE HYDRANTS SHALL BE COMPACTED IN ACCORDANCE WITH SECTION 1003 OF THE STANDARD SPECIFICATIONS.
- THE CONTRACTOR SHALL NOT OPERATE ANY WATER MAIN VALVES ON THE EXISTING WATER SYSTEM.
- ALL WATER HOUSE CONNECTIONS SHALL BE FOR INSIDE METER SETTINGS.
- SERVICE CLAMPS ARE TO HAVE STAINLESS STRAPS.

TAR BAY DRIVE  
GREATER BALTIMORE CONSOLIDATED WHOLESALE FOOD MARKET  
LIBER 806 FOLIO 782

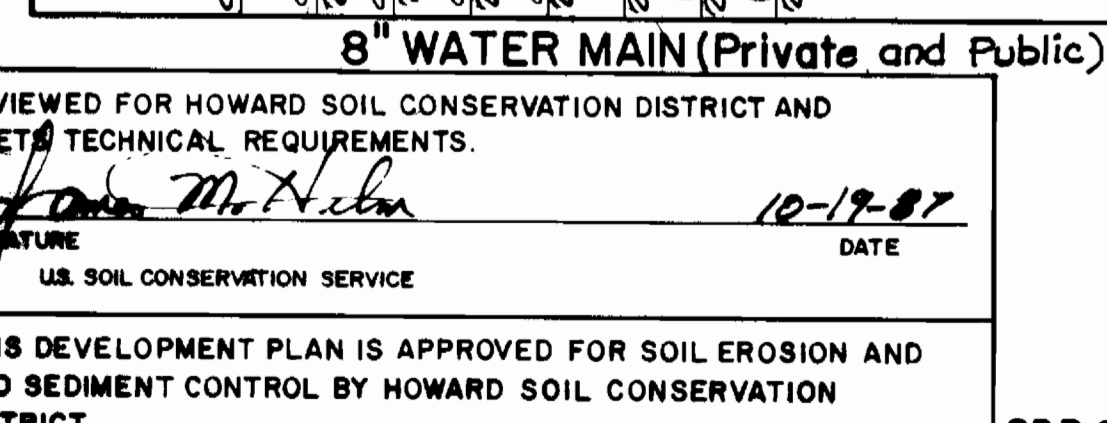
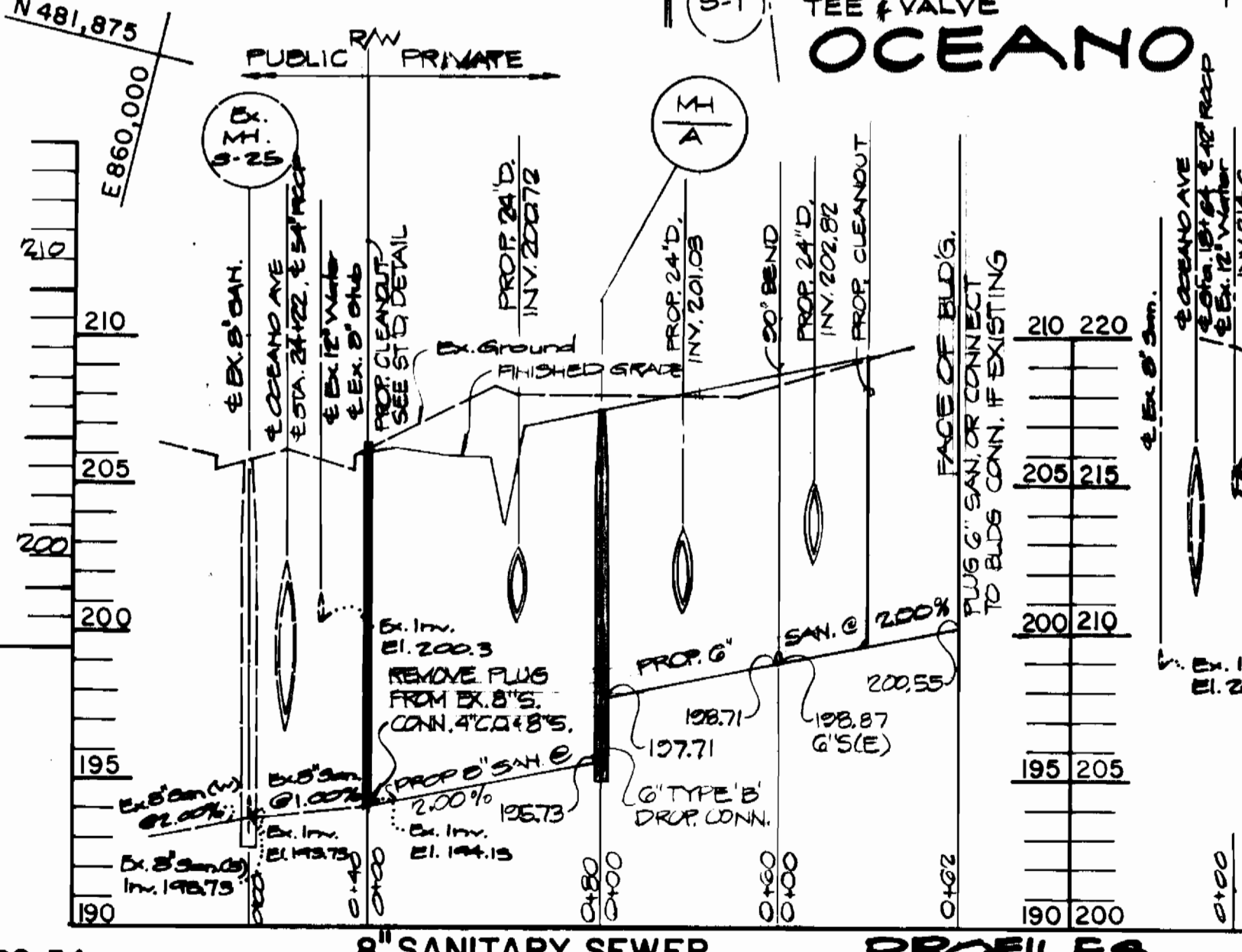


OCEANO AVENUE  
MARYLAND WHOLESALE FOOD CENTER  
SECTION 3, BLOCK 'A'  
PARCEL 'C'



QUANTITIES			
ITEM	ESTIMATED	AS-BUILT	MATERIAL/SUPPLIER
8" VALVE	1	1	MUELLER
6" VALVE	1	1	MUELLER
6" SAN. PLUG	1	1	SA
8" WATER MAIN	40 LF.	40 LF.	Atlantic States C.I.P.
6" WATER MAIN	170 LF.	170 LF.	"
6" VALVE	1 EA.	1 EA.	American Dabline
6" TAPPING TEE	1 EA.	1 EA.	"
6" FIRE HYDRANT	1 EA.	1 EA.	MUELLER A 423
6" CAP	1 EA.	1 EA.	"
CONC. BUTTRESS	3 EA.	3 EA.	ARMOR

NOTE:  
ALL D.I.P. FITTINGS SHALL BE IN ACCORDANCE WITH AWWA SPECIFICATION C-153 DUCTILE IRON COMPACT FITTINGS, 3 INCHES THROUGH 12 INCHES FOR WATER AND OTHER LIQUIDS.



REVIEWED FOR HOWARD SOIL CONSERVATION DISTRICT AND MEETS TECHNICAL REQUIREMENTS.  
*John McNeil* 10-19-87  
U.S. SOIL CONSERVATION SERVICE

APPROVED: *John McNeil* 10/19/87  
HOWARD SOIL CONSERVATION DISTRICT

SDP 88-34  
SEDIMENT CONTROL MEASURES FOR THIS CONTRACT WILL BE IMPLEMENTED IN ACCORDANCE WITH SECTION 219 OF THE STANDARD SPECIFICATION AND SDP-88-34

DEPARTMENT OF PUBLIC WORKS  
HOWARD COUNTY, MARYLAND  
DIRECTOR OF PUBLIC WORKS  
*John McNeil* 10-22-87  
BUREAU OF UTILITIES

HICKS ENGINEERING COMPANY, INC.  
CIVIL ENGINEERS - SURVEYORS - PLANNERS  
200 EAST JOPPA ROAD, SUITE 402  
TOWSON, MARYLAND 21284 (301) 494-0001

DES: D.J.D.			
DRN: L.A.W.			
CHK: D.E.H.	2	REVISED F.H. PER. AS-BUILT.	11/20/87
DATE: AUG, 87	BY NO.	REVISION	DATE

PLAN & PROFILE FOR PROPOSED 8-INCH & 6-INCH WATER MAINS  
CONTRACT NO. 44-1724-D  
600' SCALE MAP NO. BLOCK NO.

MERCHANTS TERMINAL CORPORATION  
OCEANO AVENUE & TAR BAY DRIVE  
6TH ELECTION DISTRICT  
HOWARD COUNTY, MARYLAND  
SCALE AS SHOWN  
SHEET 1 OF 1

6-21-88 AS-BUILT 11-23-92