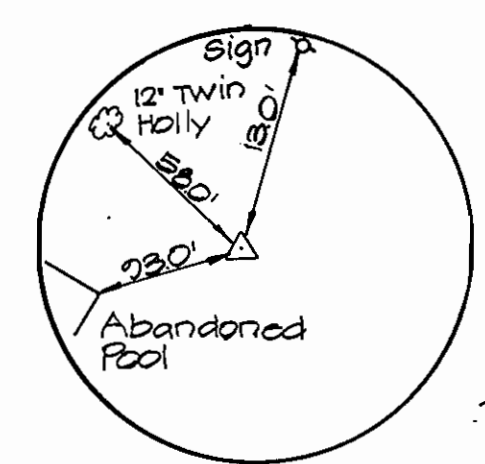
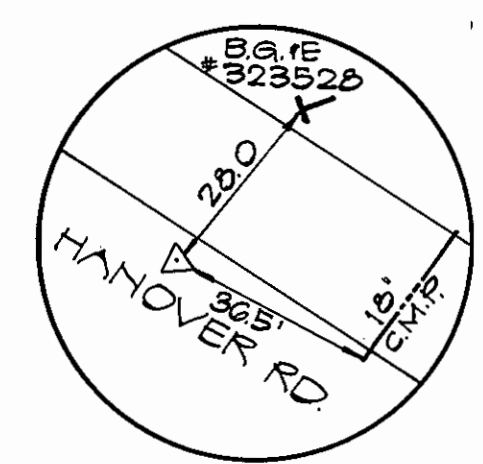
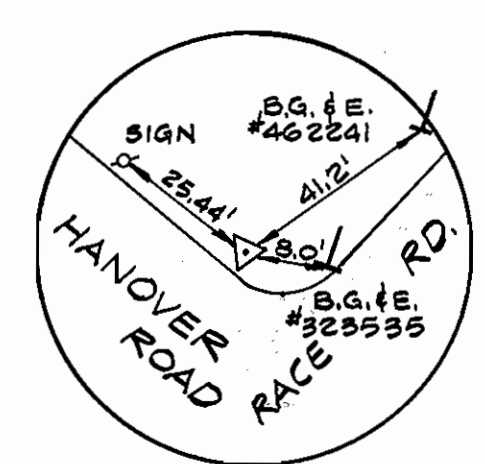
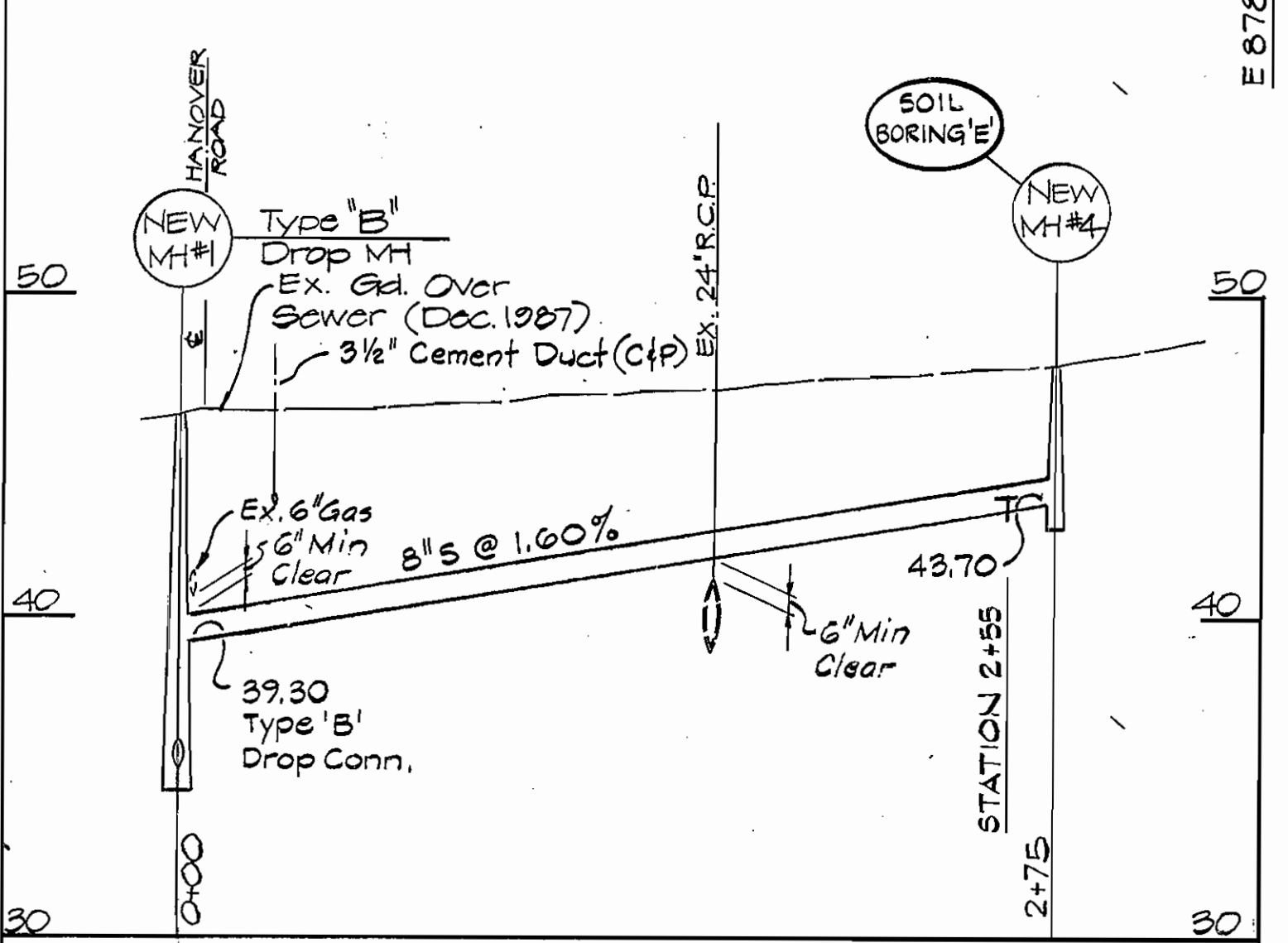


SEWER CODE
2150000



NUMBER OF LOTS 6
TYPE OF BUILDING 2 INDUSTRIAL, 4 RESIDENTIAL
NUMBER OF S.H.G. 5
DRAINAGE AREA DEEP RUN

VICINITY MAP
SCALE: 1"=200'



PROFILE
SCALE: VERT. 1"=5', HORIZ. 1"=50'

BENCH MARKS

Ho. Co. #2447003 Elev. 46.266
Conc. Monument North of Intersection of Hanover & Race Roads 0.2' Below Surface.
Ho. Co. #2447002 Elev. 59.819
Conc. Monument N.E. Corner of R.R. Tracks & Hanover Rd., 0.3' Below Surface.

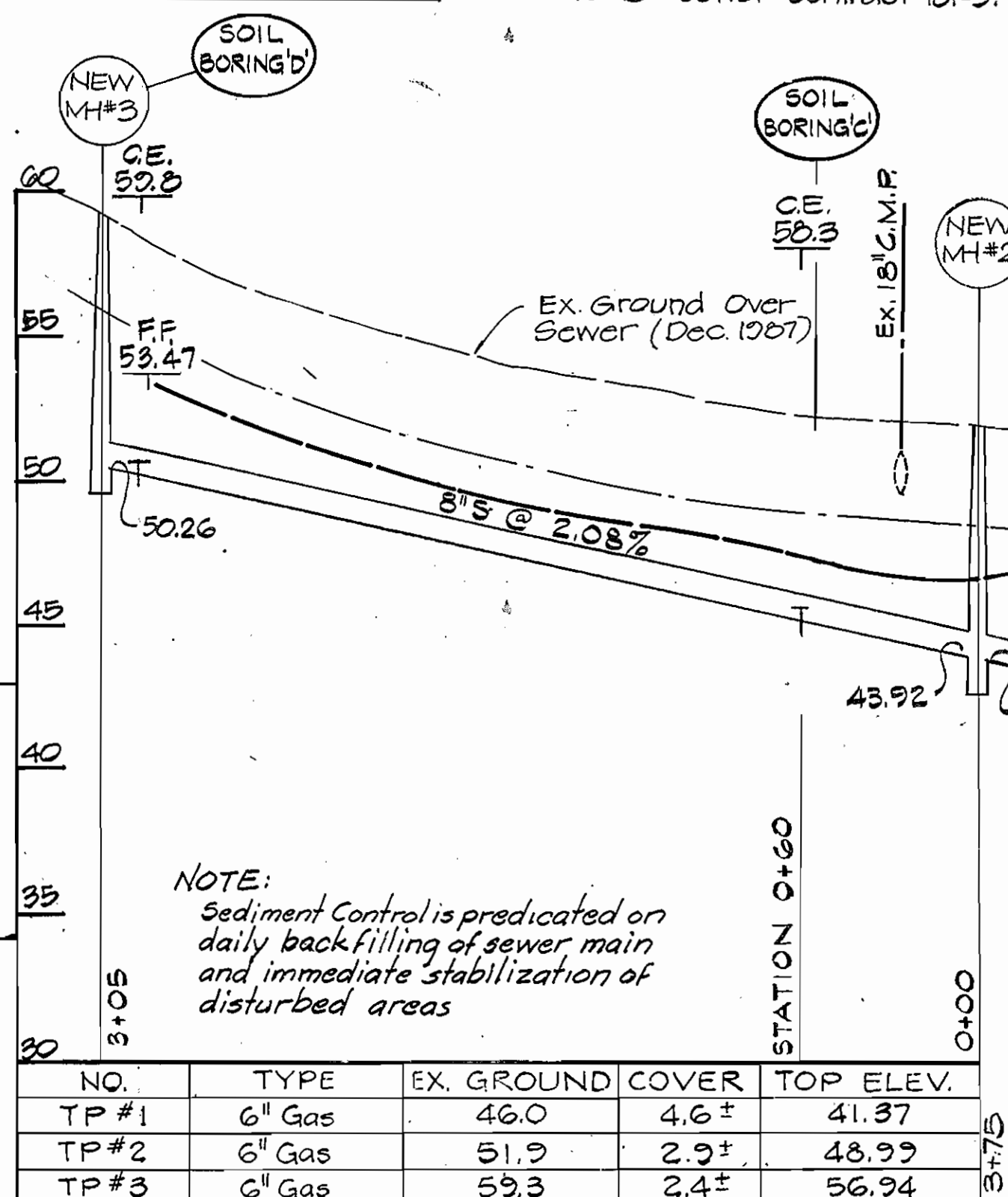
DAILY BACKFILL SEDIMENT CONTROL MEASURES FOR THIS CONTRACT WILL BE IMPLEMENTED IN ACCORDANCE WITH SECTION 219 OF THE STANDARD SPECIFICATION.

REVIEWED FOR HOWARD SOIL CONSERVATION DISTRICT AND MEETS TECHNICAL REQUIREMENT.
Signature: [Signature] DATE: 6/23/88

U.S. SOIL CONSERVATION SERVICE

This Construction Plan is approved for Soil Erosion and Sediment Control by the Howard Soil Conservation District.

APPROVED: [Signature] DATE: 6/23/88
HOWARD S.C.D.



PLAN
SCALE: 1"=50'

NO.	TYPE	EX. GROUND	COVER	TOP ELEV.
TP #1	6" Gas	46.0	4.6±	41.37
TP #2	6" Gas	51.9	2.9±	48.99
TP #3	6" Gas	59.3	2.4±	56.94

DEPARTMENT OF PUBLIC WORKS
HOWARD COUNTY, MARYLAND

DIRECTOR OF PUBLIC WORKS DATE: [Signature] 6-10-88
CHIEF, BUREAU OF UTILITIES

CHIEF, BUREAU OF ENGINEERING DATE: [Signature] 6-1-88
CHIEF, UTILITY DESIGN DIVISION

HICKS ENGINEERING CO. INC.
ENGINEERS · SURVEYORS · PLANNERS
200 E. JOPPA ROAD · SUITE 402
TOWSON MARYLAND 21204

STATE OF MARYLAND
DONALD E. HICKS P.E. REG. NO. 8676

DES: T.A.W.
DRN: L.A.W.
CHK: D.E.H.
DATE: [] BY NO. [] REVISION []

8" SANITARY SEWER
CONTRACT NO. 10-1720

600' SCALE MAP NO. 38 BLOCK NO. 21

HANOVER EAST COLLECTOR SEWER
FIRST ELECTION DISTRICT
HOWARD COUNTY, MARYLAND
CAPITAL PROJECT S-6157

SCALE AS SHOWN
SHEET 1 OF 1

QUANTITIES

ITEM	ESTIMATE	AS BUILT	SUPPLIER
8" SANC	1022		
6" SHC	105		
Manhole (F)	38		

TRAVERSE INFO

HO. CO. #2447003 = N 494,376.047
E 879,030.173
N 54° 00' 32" W = 388.58'
HEC TRAV RT. 2210 = N 494,604.40
E 878,715.77
N 55° 58' 29" W = 228.20'
HEC TRAV RT. 2211 = N 494,788.15
E 878,527.56

- GENERAL NOTES
- Approximate location of existing mains are shown. The contractor shall take all necessary precautions to protect existing mains and services and maintain uninterrupted supply. Any damage incurred shall be repaired immediately to the satisfaction of the Engineer, at the Contractor's Expense.
 - All Horizontal Controls Are Based on Maryland State Coordinates.
 - All Vertical Controls Are Based on U.S.G.S. Data
 - All Pipe Elevations Shown Are Invert Elevations.
 - Clear All Utilities By a Minimum of 6" Clear All Poles By 2'-0" Minimum Or Toler AS Required. The Owner has Contracted The Utility Companies And Has Made Arrangements For Bracing Of Poles AS SHOWN ON THE DRAWINGS. In The Event The Contractor's Work Requires The Bracing Of Additional Poles, Any Cost Incurred By The Owner For The Bracing Of Additional Poles Or Damages Shall Be Deducted From Money Owed The Contractor. The Contractor Shall Coordinate With The Utility Companies To Schedule The Bracing Of The Poles.
 - For Details Not Shown On The Drawings, And For Materials And Construction Methods, Use Howard County Design Manual, Volume IX, Standard Specifications And Details For Construction. The Contractor Shall Have A Copy Of Volume IX On The Job.
 - Where Test Pits Have Been Made On Existing Utilities, They Are Noted By The Symbol [] at the Location of The Test Pit. A Note Or Notes Containing The Results Of The Test Pit Or Pits Is Included On The Drawings. Existing Utilities In The Vicinity Of The Proposed Work For Which Test Have Not Been Dug Shall Be Located By The Contractor Two Weeks In Advance Of Construction Operations At The Owners Expense.
 - Contractor Shall Notify The Following Utilities Companies Or Agencies At Least Five Working Days Before Starting Work Shown On These Plans:
 - State Highway Administration - 531-3533
 - Baltimore Gas & Electric Co. - 850-4620
 - Baltimore Gas & Electric Co. - 850-4620
 - Underground Damage Control - 850-9004
 - Baltimore Gas & Electric Co. - 298-1301
 - Trouble Shooting - 1-800-257-7777
 - Miss Utility - 795-1390
 - Colonial Pipeline Co. - 795-1390
 - Bureau Of Utilities, Howard County Dept. Of Public Works - 292-2366
 - Trees And Shrubs Are To Be Protected From Damage To Maximum Extent. Trees And Shrubs Located Within The Construction Strip Are Not To Be Removed Or Damaged By The Contractor.
 - Contractor Shall Remove Trees, Stumps And Roots Along Line of Excavation. Payment For Such Removal Shall Be Included In The Unit Price For Construction Of The Main.
 - All Sewer Mains Shall Be C.S.P.X., R.C.S.P., V.C.P.X., A.C.P. Class 2400 Or PVC Unless Otherwise Noted.
 - The Contractor Shall Provide A Joint In All Sewer Mains Within 2'-0" Of Exterior Manhole Wall.
 - All Manholes Shall Be 4'-0" Inside Diameter Unless Otherwise Noted.

RESTORATION SCHEDULE

LOCATION	DISTANCE	TYPE
EX. MH 2577 TO MH 1	67'	SEED
MH 1 TO MH 2	375'	BLACKTOP
MH 2 TO 1+50	150'	BLACKTOP
1+50 TO 2+40	90'	SEED/BLKTOP
2+40 TO 2+90	50'	BLACKTOP
2+90 TO MH 3	15'	SEED/BLKTOP
MH 1 TO MH 4	275'	BLACKTOP

MANHOLE STAKEOUT TABLE

MANHOLE	DISTANCE	OFFSET
1	43' South of Ho. Co. #2447003	33' West
2	58' South of RT. #2210	None
3	21' North of RT. #2211	26' East
4	251' East of Ho. Co. #2447003	20' South