

GENERAL NOTES

(TO BE PRINTED ON THE CONSTRUCTION PLAN, DRAWING NO. 1 OF 2)

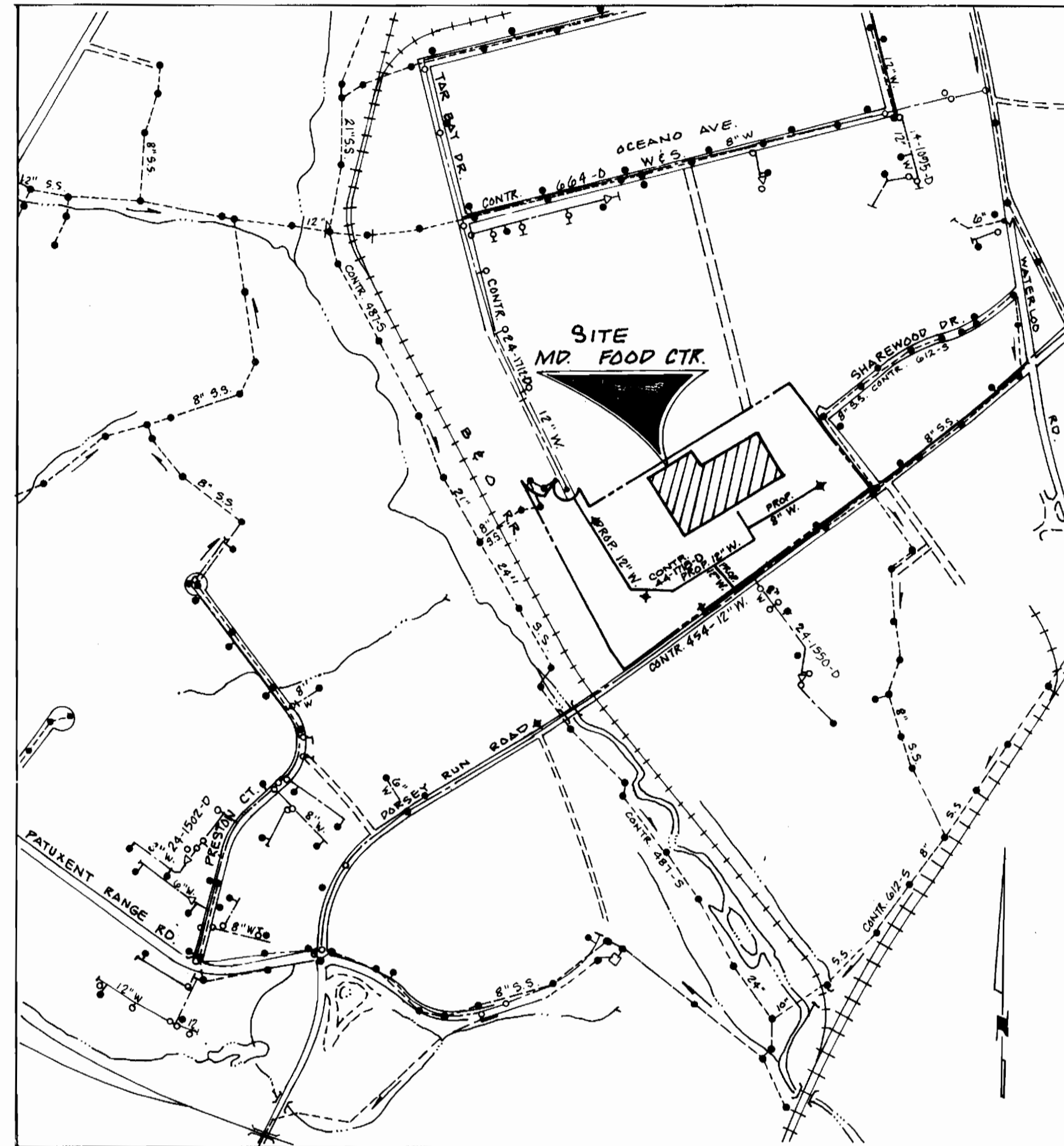
PARTS I, II & III

PART I (TO BE PRINTED ON BOTH WATER AND SEWER PLANS)

- APPROXIMATE LOCATION OF EXISTING MAINS ARE SHOWN. THE CONTRACTOR SHALL TAKE ALL NECESSARY PRECAUTIONS TO PROTECT EXISTING MAINS AND SERVICES AND MAINTAIN UNINTERRUPTED SUPPLY. ANY DAMAGE INCURRED SHALL BE REPAIRED IMMEDIATELY TO THE SATISFACTION OF THE ENGINEER AT THE CONTRACTOR'S EXPENSE.
- ALL HORIZONTAL CONTROLS ARE BASED ON MARYLAND STATE COORDINATES.
- ALL VERTICAL CONTROLS ARE BASED ON U.S.G.S DATUM.
- ALL PIPE ELEVATIONS SHOWN ARE INVERT ELEVATIONS.
- CLEAR ALL UTILITIES BY A MINIMUM OF 6". CLEAR ALL POLES 2'-0" MINIMUM OR TUNNEL AS REQUIRED. THE OWNER HAS CONTACTED THE UTILITY COMPANIES AND HAS MADE ARRANGEMENTS FOR BRACING OF POLES AS SHOWN ON THE DRAWINGS. IN THE EVENT THE CONTRACTOR WORK REQUIRES THE BRACING OF ADDITIONAL POLES, ANY COST INCURRED BY THE OWNER FOR THE BRACING OF ADDITIONAL POLES OR DAMAGES SHALL BE DEDUCTED FROM THE MONEY OWED THE CONTRACTOR. THE CONTRACTOR SHALL COORDINATE WITH THE UTILITY COMPANIES TO SCHEDULE THE BRACING OF POLES.
- FOR DETAILS NOT SHOWN ON THE DRAWINGS, AND FOR MATERIALS AND CONSTRUCTION METHODS, USE HOWARD COUNTY DESIGN MANUAL, VOL. IV, STANDARD SPECIFICATIONS AND DETAILS FOR CONSTRUCTION. THE CONTRACTOR SHALL HAVE A COPY OF VOL. IV ON THE JOB.
- CONTRACTOR SHALL LOCATE EXISTING UTILITIES IN ADVANCE OF CONSTRUCTION OPERATIONS IN THE VICINITY OF PROPOSED UTILITIES.
- CONTRACTOR SHALL NOTIFY THE FOLLOWING UTILITIES OR AGENCIES AT LEAST FIVE (5) DAYS BEFORE STARTING WORK SHOWN ON THESE PLANS:
 - STATE HIGHWAY ADMINISTRATION - 551-5533
 - BALTIMORE GAS AND ELECTRIC COMPANY - UNDERGROUND ELECTRIC DISTRIBUTION ENGINEERING - "DAMAGE CONTROL" - 244-5691
 - BALTIMORE GAS AND ELECTRIC COMPANY - UNDERGROUND GAS DISTRIBUTION ENGINEERING - 559-0100
 - CHESTATEAKE AND POTOMAC TELEPHONE COMPANY - 725-9976
 - AMERICAN TELEPHONE AND TELEGRAPH - CABLE LOCATION DIVISION - 301-393-5553
 - COLONIAL PIPELINE COMPANY - 781-4641
- TREES ARE TO BE PROTECTED FROM DAMAGE TO MAXIMUM EXTENT. TREES LOCATED WITHIN THE CONSTRUCTION STRIP ARE NOT TO BE REMOVED OR DAMAGED BY THE CONTRACTOR.
- CONTRACTOR SHALL REMOVE TREES, STUMPS AND ROOTS ALONG LINE OF EXCAVATION AS DIRECTED BY THE ENGINEER. PAYMENT FOR SUCH REMOVAL SHALL BE INCLUDED IN THE UNIT PRICE BID FOR EXCAVATION AND BACKFILL FOR WATER AND SEWER MAINS.
- PLACE REGULATION "MIN WORKING" AND WARNING SIGNS AS REQUIRED TO COMPLY WITH MARYLAND STATE HIGHWAY ADMINISTRATION MANUAL OF TRAFFIC CONTROL FOR HIGHWAY CONSTRUCTION AND MAINTENANCE OPERATIONS.

WATER - PART II

- ALL WATER MAINS TO BE D.I.P. UNLESS OTHERWISE NOTED.
- TOP OF ALL WATER MAINS TO HAVE A MINIMUM OF 3'-1/2' COVER UNLESS OTHERWISE NOTED.
- ALL VALVES SHALL BE STRAPPED TO TEES IN ACCORDANCE WITH STANDARD DETAILS.
- ALL FITTINGS SHALL BE BUTTRESSED OR ANCHORED WITH CONCRETE IN ACCORDANCE WITH THE STANDARD DETAILS UNLESS OTHERWISE PROVIDED ON THE DRAWINGS.
- FIRE LINE ELEVATIONS ON FIRE HYDRANTS SHALL BE SET TO THE ELEVATIONS SHOWN ON THE DRAWINGS. ALL FIRE HYDRANTS SHALL BE STRAPPED AND BUTTRESSED WITH CONCRETE IN ACCORDANCE WITH STANDARD DETAILS. SOIL AROUND THE FIRE HYDRANT TO BE COMPACTED IN ACCORDANCE WITH SECTION 1003 & 1008 OF THE STANDARD SPECIFICATIONS.
- THE CONTRACTOR SHALL NOT OPERATE ANY WATER MAIN VALVES ON THE EXISTING WATER SYSTEM.
- ALL WATER HOUSE CONNECTIONS SHALL BE INSIDE METER SETTINGS UNLESS OTHERWISE NOTED.
- ALL FIRE HYDRANTS TO BE SET THREE FEET BEHIND PROPOSED FACE OF CURB UNLESS NOTED OTHERWISE.
- ALL WATER HOUSE CONNECTIONS SHALL COMPLY WITH HOWARD CO. STD. 3.21 AS SHOWN ON ARTICLE 40, SPECIAL PROVISIONS.
- MINIMUM CRIMP RADIUS WILL BE SPECIFIED BY PIPE MANUFACTURER.
- WATER MAINS AND WATER HOUSE CONNECTION LINES MUST BE PLACED SO AS TO HAVE AT LEAST ON FOOT SEPARATION FROM THE SEWER HOUSE CONNECTION AS THEY PASS ABOUT IT.



VICINITY MAP
SCALE: 1" = 600'

INFORMATION:
TYPE OF BUILDING: OFFICE/
WAREHOUSE
NUMBER OF WHCS: 3
DRAINAGE AREA:
WATER CODE: B-02
SEWER CODE: 313 000

WATER AS BUILTS

QUANTITIES

ITEM	ESTIMATED	AS-BUILT	MATERIAL/SUPPLIER
12" x 12" TAPPING SLEEVE	1	1	MUELLER COMPANY
12" VALVE	4	4	MUELLER COMPANY
4" VALVE	1	1	"
8" VALVE	2	2	"
6" VALVE	4	4	"
6" F.H.	4	4	"
12" D.I.P.	1364 L.F.	1374	GRIFFIN PIPE PRODUCTS (COMURIA) CLSE/DIP
8" D.I.P.	385 L.F.	452	"
6" D.I.P.	0	86	"
8" CAP	1	1	"
12" x 12" TEE	1	1	"
8" x 4" TEE	1	1	"
12" x 8" REDUCER	1	1	"
8" x 6" REDUCER	1	1	"
12" - 1/8 BEND	4	4	"
12" x 8" CROSS	1	1	"
8" CHECK DETECTOR VAULT	2	2	"
12" CAP	0	1	"
12" x 8" TEE	0	1	"
12" x 6" F.H.T.	0	3	"

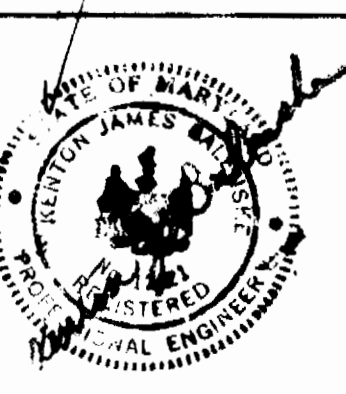
STEPHEN R. GREENMAN
ENGINEER
HOWARD COUNTY CONSERVATION DISTRICT

James M. Helm
10/29/87
DATE

IMPLEMENTED IN ACCORDANCE WITH SECTION 219 OF THE STANDARD SPECIFICATIONS AND SECTION 219.047

DEPARTMENT OF PUBLIC WORKS
HOWARD COUNTY, MARYLAND
James
DIRECTOR OF PUBLIC WORKS
10/26/87
Robert M. Beinger
10-26-87
CHIEF, BUREAU OF ENGINEERING

ENGINEERING
Greenman - Pedersen, Inc.
ENGINEERS/ARCHITECTS/PLANNERS
14504 GREENVIEW DR. SUITE 100 LAUREL
MD 20641
JOB NO. 86164 W3

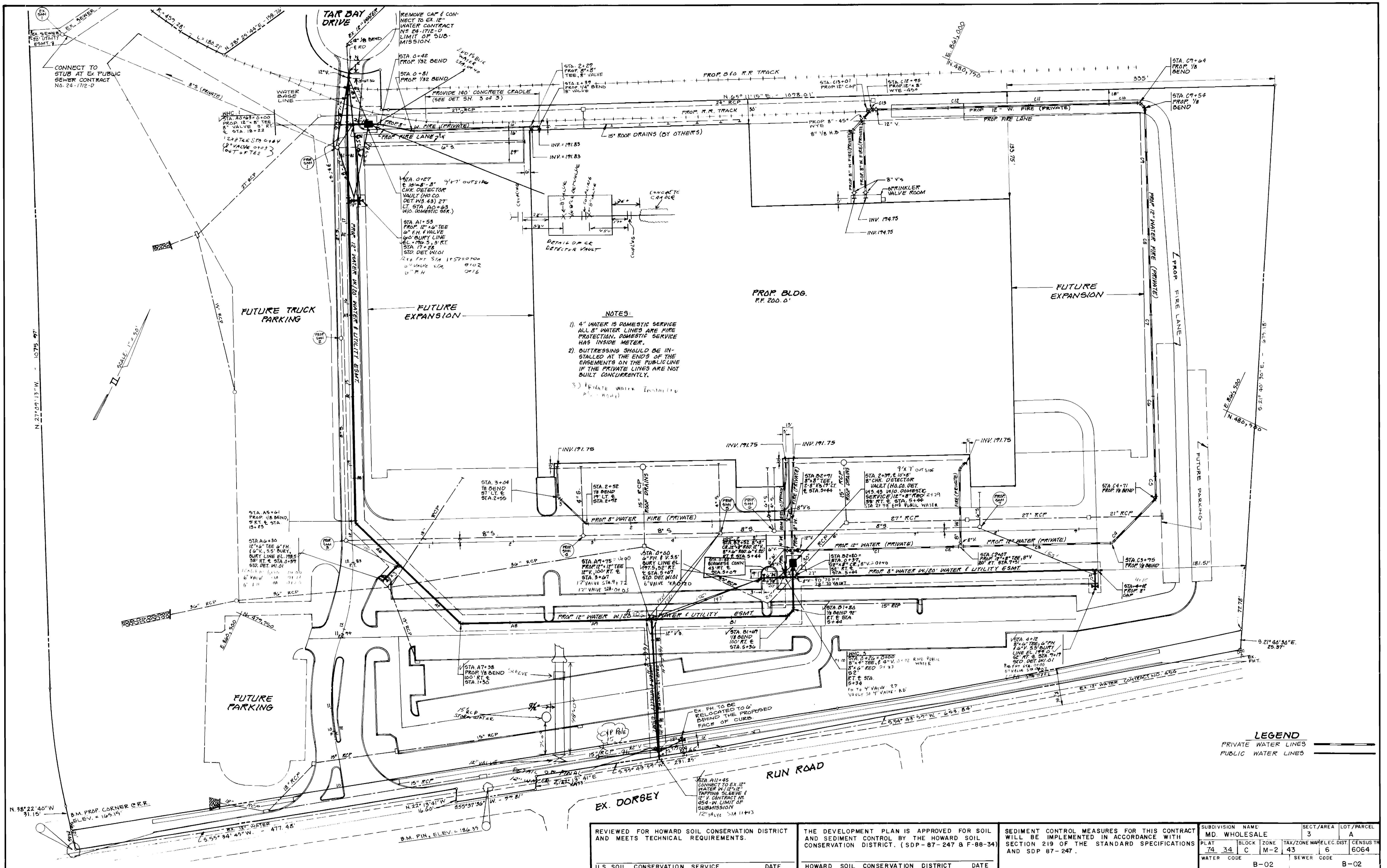


D.J.M.
S.M.C.
D.J.M.
10/29/87

TITLE SHEET
GENERAL NOTES FOR WATER

PHASE III
FOOD SERVICE FACILITY
CONTINENTAL SMELKINSON
ELECTION DISTRICT GULFORD NO. 6

AS SHOWN
NO.
1 OF 3



NOTES:

- 1) 4" WATER IS DOMESTIC SERVICE ALL 8" WATER LINES ARE FIRE PROTECTION. DOMESTIC SERVICE HAS INSIDE METER.
- 2) OUTLETTING SHOULD BE INSTALLED AT THE ENDS OF THE EASEMENTS ON THE PUBLIC LINE IF THE PRIVATE LINES ARE NOT BUILT CONCURRENTLY.
- 3) PRIVATE WATER INSTALLATION (SEE DET. SHEET)

LEGEND
 PRIVATE WATER LINES
 PUBLIC WATER LINES

REVIEWED FOR HOWARD SOIL CONSERVATION DISTRICT AND MEETS TECHNICAL REQUIREMENTS.	THE DEVELOPMENT PLAN IS APPROVED FOR SOIL AND SEDIMENT CONTROL BY THE HOWARD SOIL CONSERVATION DISTRICT. (SDP-87-247 & F-88-34)	SEDIMENT CONTROL MEASURES FOR THIS CONTRACT WILL BE IMPLEMENTED IN ACCORDANCE WITH SECTION 219 OF THE STANDARD SPECIFICATIONS AND SDP 87-247.	SUBDIVISION NAME: MD. WHOLESALE SECT./AREA: 3 LOT/PARCEL: A
U.S. SOIL CONSERVATION SERVICE	HOWARD SOIL CONSERVATION DISTRICT		PLAT: 74 34 BLOCK: C ZONE: M-2 TAX/ZONE MAP/ELEC. DIST: 43 CENSUS TR. CODE: 6 WATER CODE: B-02 SEWER CODE: B-02

DEPARTMENT OF PUBLIC WORKS
 HOWARD COUNTY, MARYLAND

Director of Public Works: [Signature] DATE: 10-26-87
 Chief, Bureau of Utilities

Chief, Bureau of Engineering: [Signature] DATE: [Blank]
 Chief, Land Development

ENGINEER

gpi GREENMAN - PEDERSEN INC.
 ENGINEERS/ARCHITECT/PLANNERS
 14504 GREENVIEW DR. SUITE 100 LAUREL MD
 20708 (301) 470-2772
 JOB NO 86164 W3



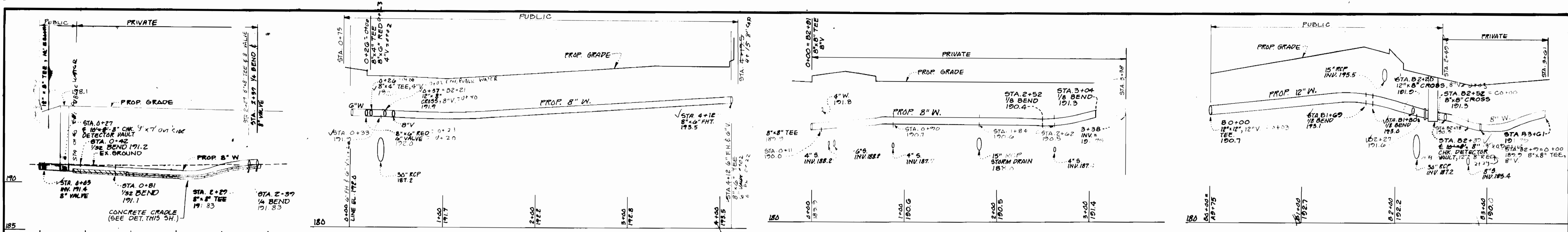
DESIGNED: D.J.M.	BY NO	REVISION	DATE
DRAWN: S.M.C.	EMT 1	COMMENTS - DEPARTMENT OF HEALTH STATE OF MD. REV. TO UTILITY STA.	12/15
CHECKED: D.J.M.	2	MISC REVISIONS	2/26
	3	MISC REVISIONS	5/6
10/29/87			

PLAN OF WATER MAINS

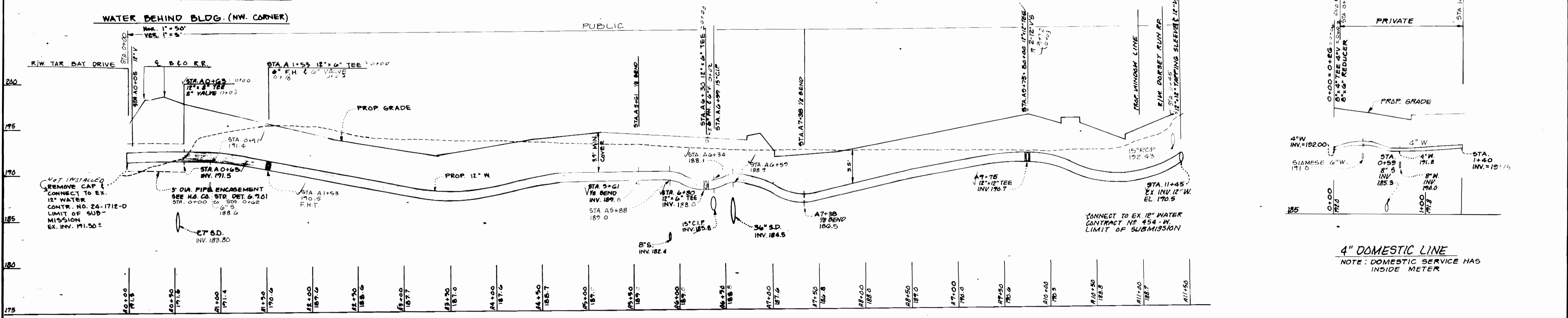
CONTRACT NO. 44-1718-D
 600 SCALE MAP NO. 43 BLOCK NO. 20 & 21

PHASE III
FOOD SERVICE FACILITY
 ELECTION DISTRICT GUILFORD NO. 6

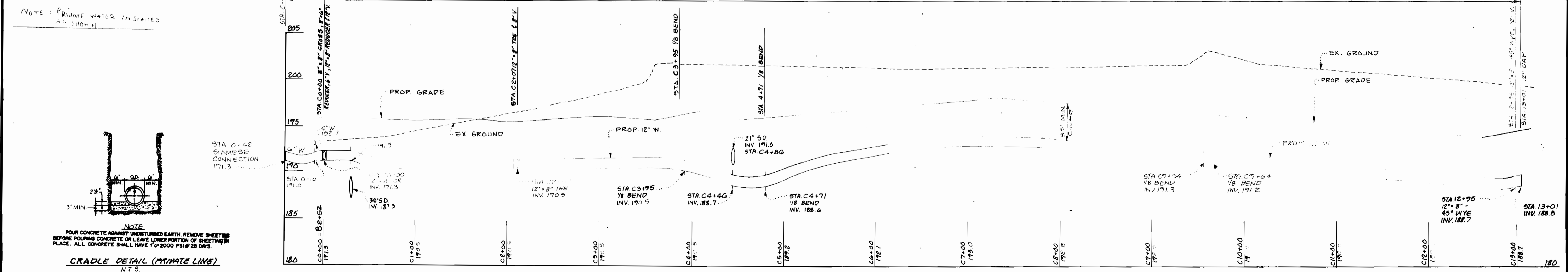
SCALE: 1" = 50'
 SHEET NO: 2 OF 3



8" W. FROM F.H. TO F.H.T. 8" WATER FROM STA. B2+91 12" W. TO INV. @ BLDG. (B) 12" W. FROM STA. A9+75 ON 12" W. TO INV. @ BLDG.



(A) 12" WATER FROM TAR BAY DRIVE TO DORSEY RUN ROAD



(C) 12" WATER FROM STA. B2+52 ON 12" PROPOSED W. TO 12" CAP NE CORNER OF BLDG.

SUBDIVISION NAME: M.D. WHOLESALE FOOD CTR PLAT: 74-34 WATER CODE: B-02		SECT./AREA: 3 LOT/PARCEL: A TAX/ZONING/ELEC DIST: 43 6 6064 SEWER CODE: B-02		REVIEWED FOR HOWARD SOIL CONSERVATION DISTRICT AND MEETS TECHNICAL REQUIREMENTS. U.S. SOIL CONSERVATION SERVICE DATE:		THE DEVELOPMENT PLAN IS APPROVED FOR SOIL AND SEDIMENT CONTROL BY THE HOWARD SOIL CONSERVATION DISTRICT. (SDP-87-247 & F88-34) HOWARD SOIL CONSERVATION DISTRICT DATE:		SEDIMENT CONTROL MEASURES FOR THIS CONTRACT WILL BE IMPLEMENTED IN ACCORDANCE WITH SECTION 219 OF THE STANDARD SPECIFICATIONS AND SDP 87-247.									
DEPARTMENT OF PUBLIC WORKS HOWARD COUNTY, MARYLAND DIRECTOR OF PUBLIC WORKS: [Signature] DATE: 10-26-87			ENGINEER gpi GREENMAN - PEDERSEN INC. ENGINEERS/ARCHITECT/PLANNERS 20706 (301) 470-2772 JOE NO. 86164-W3			DESIGNED: D.J.M. DRAWN: S.M.C. CHECKED: D.J.M. 10/29/87			REVISION BY NO. DATE 1 EMT 1 COMMENTS-DEPT. OF HEALTH- STATE. OF MD. UTILITY STATIONING, CROSSING 12/75 2 MISC. REVISIONS 2/26 3 MISC. REVISIONS 5/6			PLAN OF WATER MAINS PHASE III SERVICE FACILITY CONTINENTAL SMELKINSON ELECTION DISTRICT GUILFORD NO. 6 CONTRACT NO. 44-1718-D 600 SCALE MAP NO. 43 BLOCK NO. 20-21			SCALE: HOR. 1"=50' VERT. 1"=5' SHEET NO. 3 OF 3		

6-27-88 AS-PUN:W