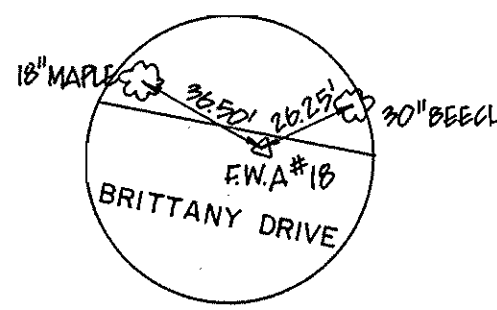
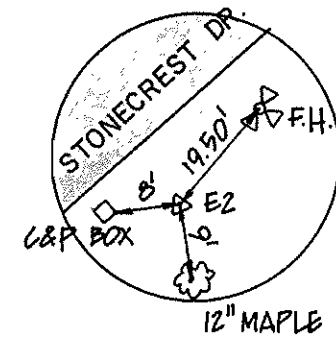


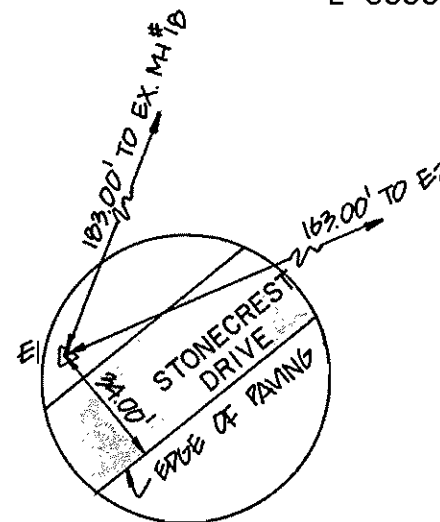
BENCHMARK
 B.M.#5 ELEV. 458.89
 TOP FIRE HYDRANT SOUTHEAST SIDE OF
 STONECREST DRIVE AT BRITTANY DRIVE.
 (REFERENCE: CAPITAL PROJECT NO. S-6088
 SEWER CONTRACT NO. 20-1069)



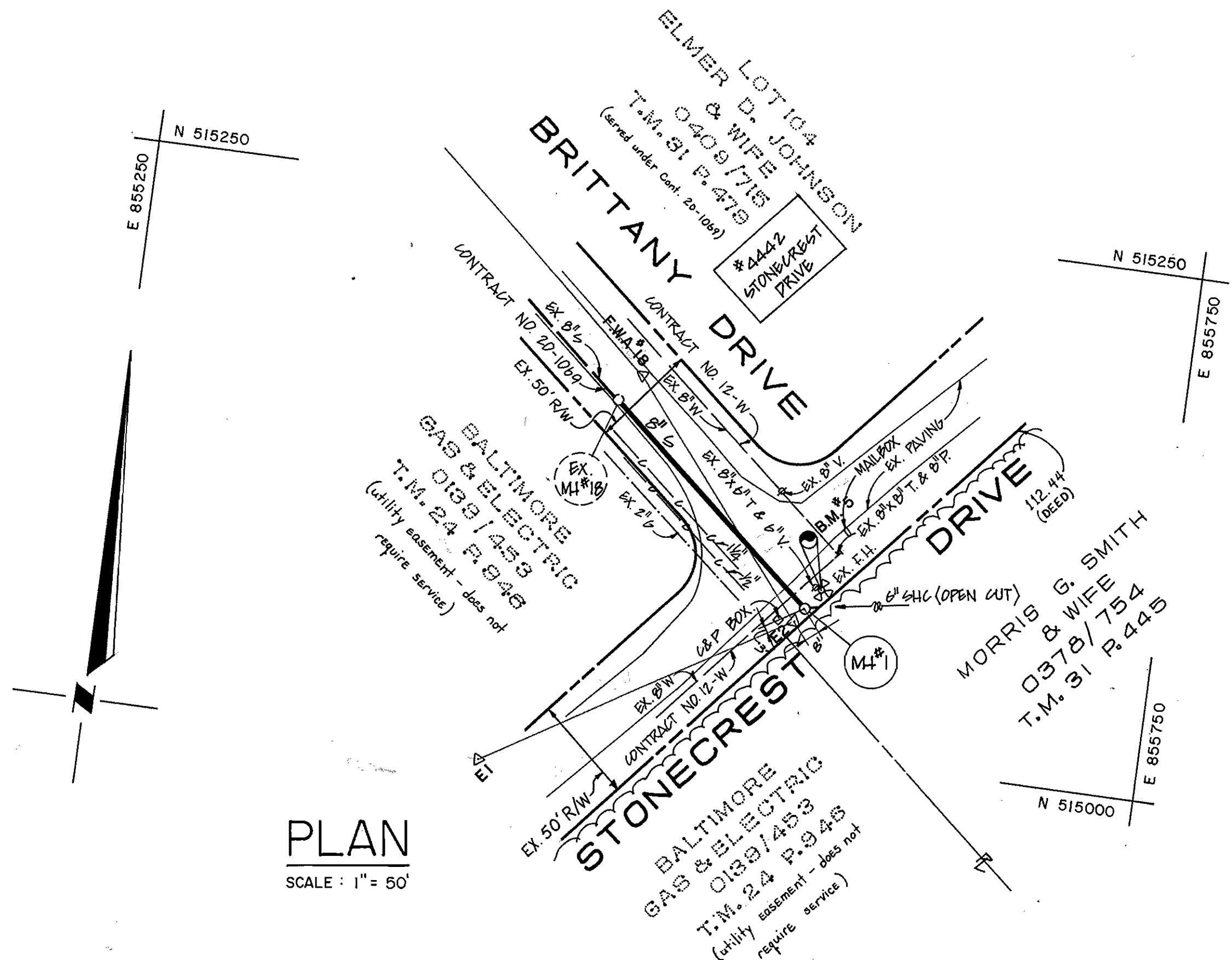
F.W.A.#18: PK. SET ELEV. 450.81
 COORDINATE N 515170.40
 E 855492.23
 (REFERENCE: CAPITAL PROJECT NO. S-6088
 SEWER CONTRACT NO. 20-1069)



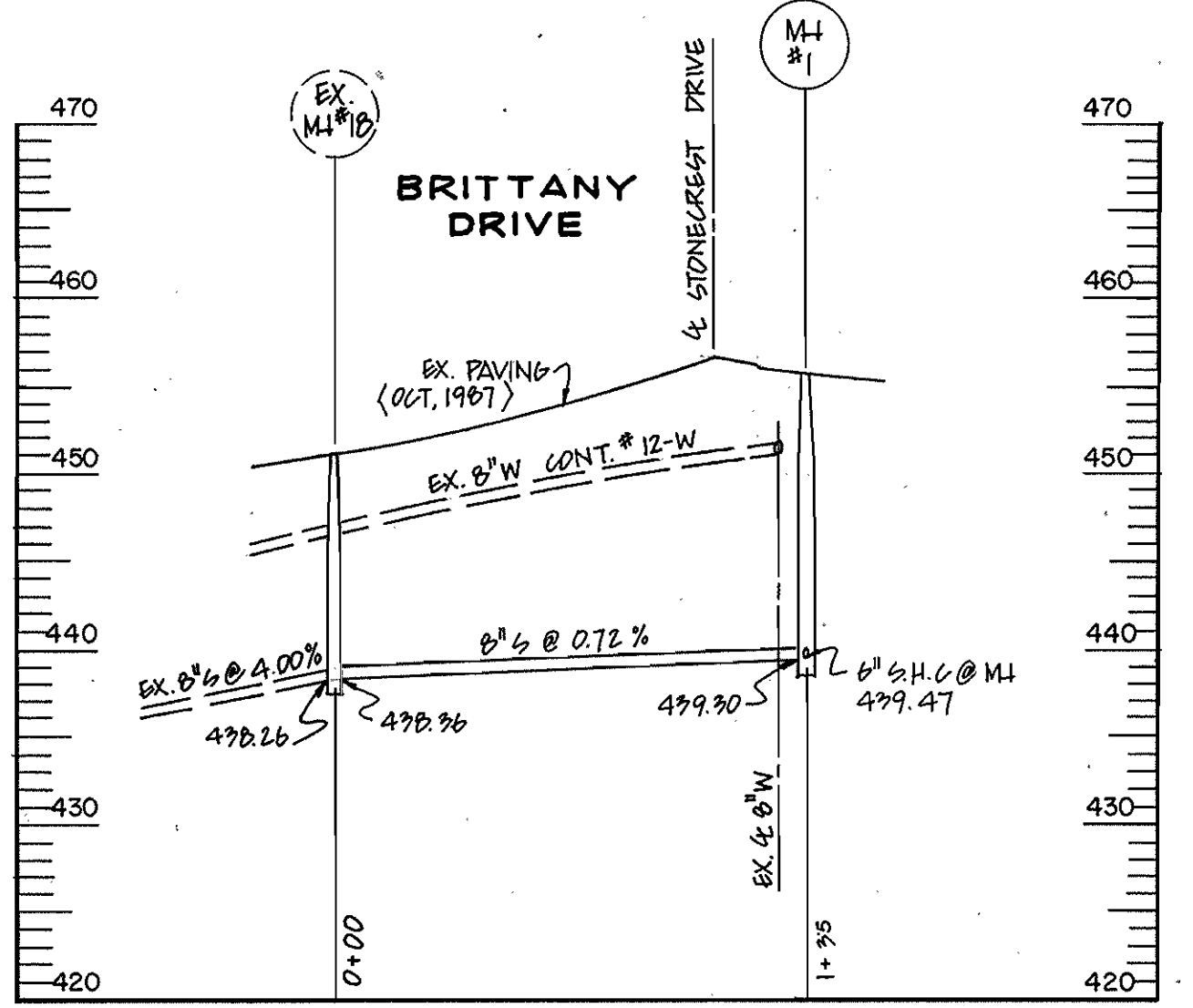
E2: IRON PIN
 COORDINATE N 515062.03
 E 855577.86



E1: IRON PIN
 COORDINATE N 514979.22
 E 855440.61



PLAN
 SCALE: 1" = 50'



PROFILE
 SCALE: HOR. 1" = 50'
 VERT. 1" = 10'

RESTORATION SCHEDULE	
STATION	TYPE OF MATERIAL
0+00 TO 1+18	BITUMINOUS CONCRETE (P-3) IN EXISTING PAVED AREA. SEED AND MULCH TO RIGHT OF EXISTING PAVED AREA.
1+18 TO 1+35	SEED AND MULCH.

SEDIMENT CONTROL NOTES

- SEDIMENT CONTROL APPROVAL IS PREDICATED ON DAILY BACKFILLING OF ALL OPEN TRENCHES.
- PROVISIONS SHALL BE MADE FOR DAILY CLEANUP OF ANY SEDIMENT THAT ACCUMULATES ON THE PUBLIC RIGHT-OF-WAY

SEDIMENT CONTROL MEASURES FOR THIS CONTRACT WILL BE IMPLEMENTED IN ACCORDANCE WITH SECTION 219 OF THE HOWARD COUNTY DESIGN MANUAL VOLUME IV - STANDARD SPECIFICATIONS AND DETAILS FOR CONSTRUCTION, AND THE 1983 MARYLAND STANDARDS AND SPECIFICATIONS FOR SOIL EROSION AND SEDIMENT CONTROL.

REVIEWED FOR HOWARD COUNTY SOIL CONSERVATION DISTRICT AND MEETS TECHNICAL REQUIREMENTS
 APPROVED:

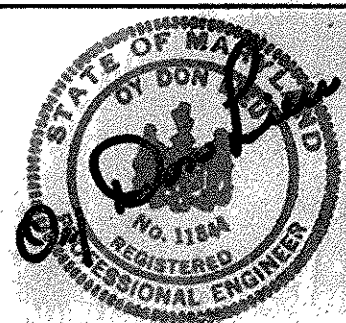
THIS PLAN IS APPROVED FOR EROSION AND SEDIMENT CONTROL BY THE HOWARD COUNTY SOIL CONSERVATION DISTRICT.
 APPROVED:

U.S. SOIL CONSERVATION SERVICE DATE

HOWARD COUNTY SOIL CONSERVATION DISTRICT DATE

DEPARTMENT OF PUBLIC WORKS
 HOWARD COUNTY, MARYLAND
 Director of Public Works: Robert M. Beaman, 3-30-89
 Chief, Bureau of Engineering: [Signature], 3-30-89
 Chief, Utility Design Division: [Signature], 3/30/88

HOWARD COUNTY, MARYLAND
 DEPARTMENT OF PUBLIC WORKS
 UTILITY DESIGN DIVISION



DES: M.H.			
DRN: Y.F.			
CHK: Q.D.L.			
DATE:	BY	NO.	REVISION

**PLAN AND PROFILE OF
 SEWER MAINS EXTENSION**

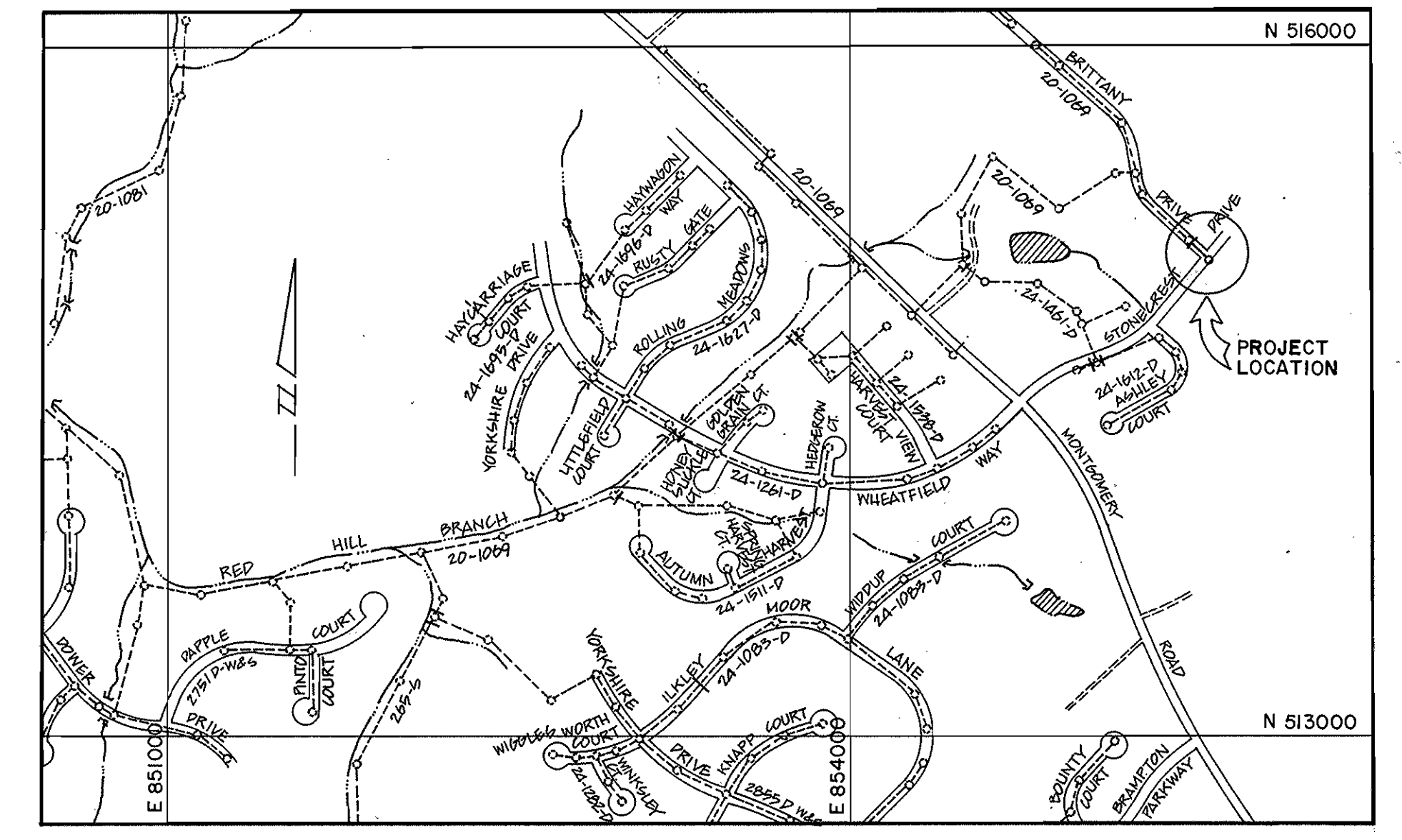
600' SCALE MAP NO. 31 BLOCK NO. 1

BRITTANY DRIVE SEWER EXTENSION

CAPITAL PROJECT NO. S-6688
 CONTRACT NO. 20-1717
 SECOND ELECTION DISTRICT
 HOWARD COUNTY, MARYLAND

SCALE AS SHOWN

SHEET 1 OF 1



TYPE OF BUILDINGS	RESIDENTIAL
NUMBER OF PARCELS	1
NUMBER OF HOUSE CONNECTION	1
DRAINAGE AREA	LITTLE PATUXENT

VICINITY MAP
 SCALE 1" = 600'

SEWER CODE 5750638
 FOR COUNTY USE ONLY

GENERAL NOTES

- APPROXIMATE LOCATION OF EXISTING MAINS ARE SHOWN. THE CONTRACTOR SHALL TAKE ALL NECESSARY PRECAUTIONS TO PROTECT EXISTING MAINS AND SERVICES AND MAINTAIN UNINTERRUPTED SUPPLY. ANY DAMAGE INCURRED SHALL BE REPAIRED IMMEDIATELY TO THE SATISFACTION ENGINEER AT THE CONTRACTOR'S EXPENSE.
- ALL HORIZONTAL CONTROLS ARE BASED ON MARYLAND STATE COORDINATES.
- ALL VERTICAL CONTROLS ARE BASED ON U.S.G.S. DATUM.
- ALL PIPE ELEVATIONS SHOWN ARE INVERT ELEVATION.
- CLEAR ALL UTILITIES BY A MINIMUM OF 6"
- FOR DETAILS NOT SHOWN ON THE DRAWINGS, AND FOR MATERIALS AND CONSTRUCTION METHODS, USE HOWARD COUNTY DESIGN MANUAL VOLUME IV, STANDARD SPECIFICATIONS AND DETAILS FOR CONSTRUCTION. THE CONTRACTOR SHALL HAVE A COPY OF VOLUME IV ON THE JOB.
- WHERE TEST PITS HAVE BEEN MADE ON EXISTING UTILITIES, THEY ARE NOTED BY THE SYMBOL [Symbol] AT THE LOCATION OF THE TEST PIT. A NOTE OR NOTES CONTAINING THE RESULTS OF THE TEST PIT OR PITS IS INCLUDED ON THE DRAWING. UTILITIES IN THE VICINITY OF THE PROPOSED WORK FOR WHICH TEST PITS HAVE NOT BEEN DUG SHALL BE LOCATED BY THE CONTRACTOR TWO WEEKS IN ADVANCE OF CONSTRUCTION OPERATIONS AT HIS OWN EXPENSE.
- CONTRACTOR SHALL NOTIFY THE FOLLOWING UTILITIES OR AGENCIES AT LEAST FIVE WORKING DAYS BEFORE STARTING WORK SHOWN ON THESE PLANS:
 STATE HIGHWAY ADMINISTRATION 531-5533
 BALTIMORE GAS & ELECTRIC COMPANY CONTRACTOR SERVICES 850-4620
 BALTIMORE GAS & ELECTRIC COMPANY UNDER GROUND DAMAGE CONTROL 859-9004
 BALTIMORE GAS & ELECTRIC COMPANY TROUBLE SHOOTING 298-9001
 MISS UTILITY 1-559-0100
 COLONIAL PIPELINE COMPANY 795-1390
 BUREAU OF UTILITIES, HOWARD COUNTY DEPARTMENT OF PUBLIC WORKS. 992-2366
 CHESAPEAKE & POTOMAC (C & P) TELEPHONE COMPANY 1-800-257-7777
- TREES AND SHRUBS ARE TO BE PROTECTED FROM DAMAGE TO MAXIMUM EXTENT. TREES AND SHRUBS LOCATED WITHIN THE CONSTRUCTION STRIP ARE NOT TO BE REMOVED OR DAMAGED BY THE CONTRACTOR.
- CONTRACTOR SHALL REMOVE TREES, STUMPS AND ROOTS ALONG LINE OF EXCAVATION. PAYMENT FOR SUCH REMOVAL SHALL BE INCLUDED IN THE UNIT PRICE BID FOR CONSTRUCT OF THE MAIN.
- MANHOLES DESIGNATED W.T. IN PLAN AND PROFILE SHALL HAVE WATERTIGHT FRAME AND COVERS STANDARD DETAIL G.5.2. WHERE WATERTIGHT MANHOLE FRAME AND COVER IS USED, SET TOP OF FRAME 1'-6" ABOVE FINISHED GRADE UNLESS OTHERWISE NOTED ON THE DRAWINGS.
- ALL SEWER MAINS SHALL BE C.S.P.X., R.C.S.P., V.C.P.X., A.C.P. CLASS 2400 OR P.V.C. UNLESS OTHERWISE NOTED.
- THE CONTRACTOR SHALL PROVIDE A JOINT IN ALL SEWER MAINS WITHIN 2'-0" OF EXTERIOR MANHOLE WALL.
- ALL MANHOLE SHALL BE 4'-0" INSIDE DIAMETER UNLESS OTHERWISE NOTED.
- MANHOLE SHOWN WITH 12" AND 16" WALLS ARE FOR BRICK MANHOLES ONLY.
- MANHOLES LOCATED WITHIN PROPOSED ROADWAY SHALL HAVE STANDARD HEAVY TRAFFIC MANHOLE FRAME AND COVER, STANDARD DETAIL G.5.1

QUANTITIES				
ITEM	BID	AS-BUILT	MATERIAL	SUPPLIER
MANHOLES	1 EA.			
8" SEWER	131 LF.			
6" S.H.C.	5 LF.			