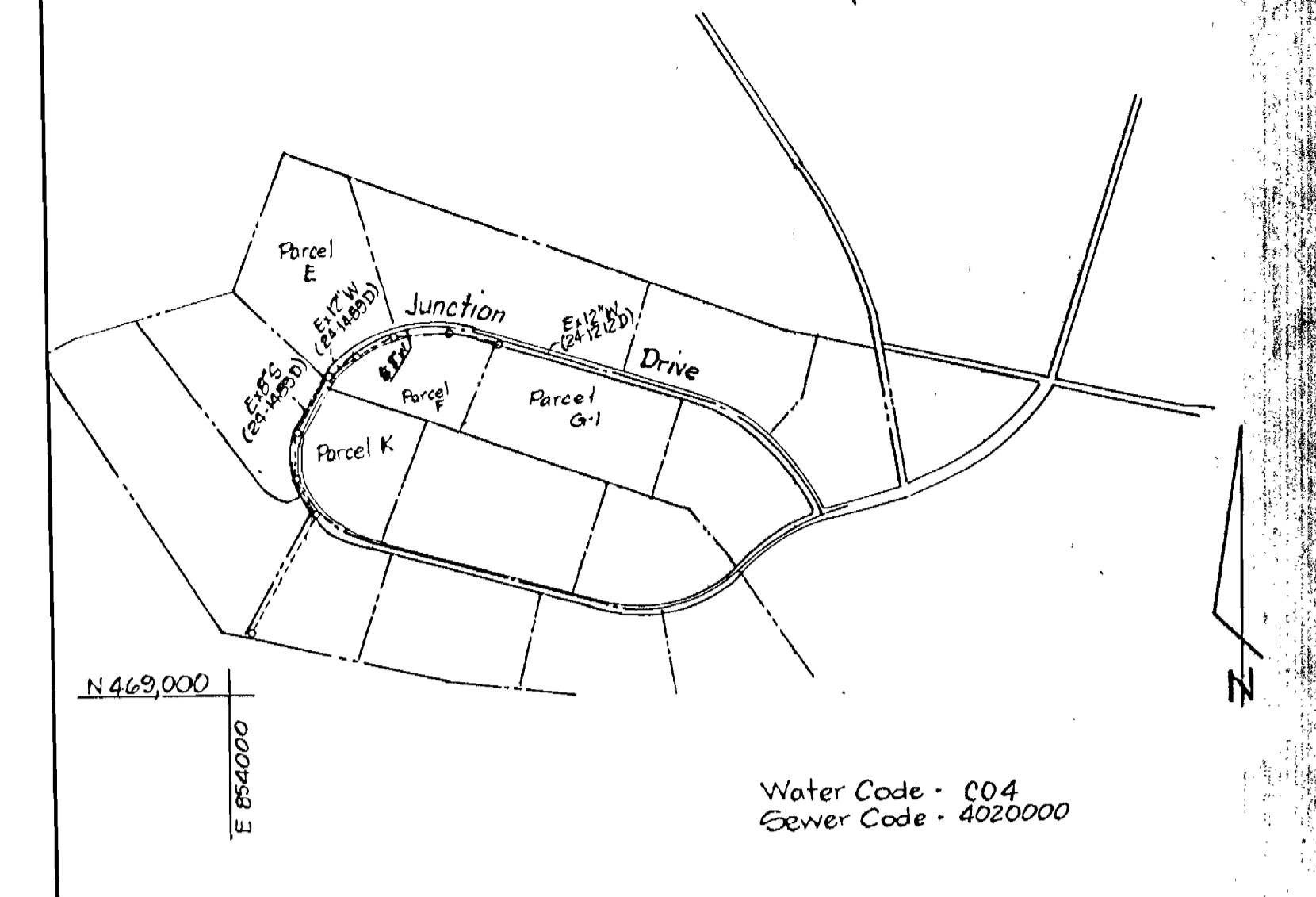


BENCHMARKS

BM*1 - 1" dia cut in top of curb NW corner of Parcel G-1 Elev. 214.78

BM*2 - 1" dia cut in top of curb SW corner of Parcel G-1 Elev. 209.91

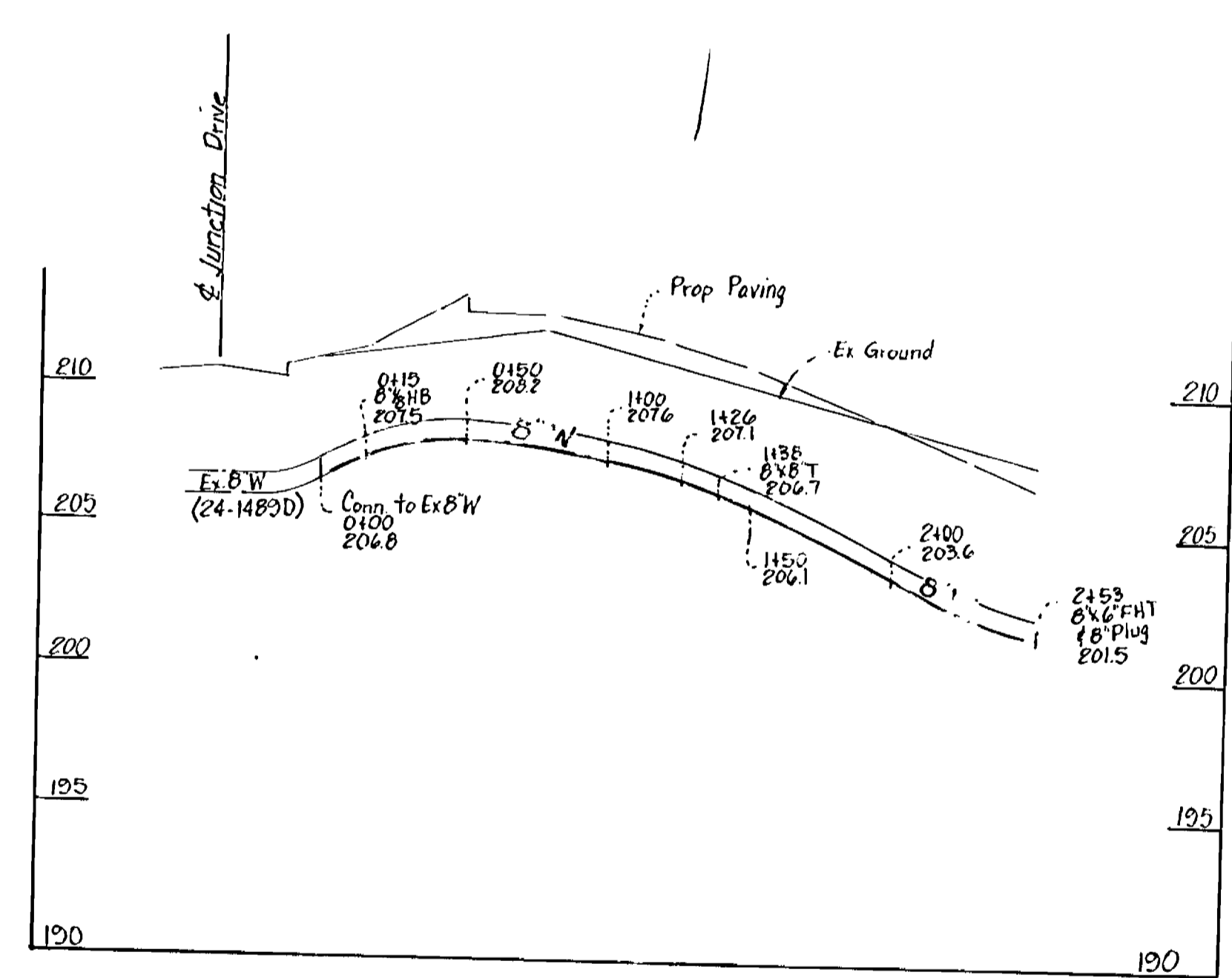


Type of Building: Ink Manufacturing
 Number of Lots: 1
 Number of House Connections: 1
 Drainage Area: Little Patuxent

LOCATION PLAN
 SCALE: 1" = 600'

Water Code - C04
 Sewer Code - 4020000

PLAN
 Scale: 1" = 50'



PROFILE
 Scale: Vert 1" = 5'
 Horiz 1" = 50'

- CONSTRUCTION SEQUENCE**
SEDIMENT CONTROL PROCEDURES
1. Obtain Sediment Control Permit (Article 15.05-3)
 2. Clear, grub, and strip as required for water construction.
 3. Construct water pipe lines.
 4. Restore erosion control structures disturbed by construction.
 5. Stabilize disturbed areas, as construction progresses with temporary seeding and mulching (or permanent restoration)
 6. Complete permanent restoration.
 7. Remove sediment structures when directed.

- GENERAL NOTES**
1. Approximate location of existing mains are shown. The contractor shall take all necessary precautions to protect existing services and maintain uninterrupted supply. Any damage incurred shall be repaired immediately to the satisfaction of the engineer.
 2. All horizontal controls are based on Maryland State Coordinates.
 3. All vertical controls are based on U.S.G.S. datum.
 4. All pipe elevations shown are invert elevations.
 5. Clear all utilities by a minimum of 6'. Clear all poles by 2'-0" minimum or tunnel as required.
 6. For all standard details see standards bound in specifications.
 7. Contractor shall locate existing utilities a minimum of two (2) weeks in advance of construction operations in the vicinity of proposed utilities.
 8. Contractor shall notify the following utilities agencies at least five (5) working days before starting work shown on these plans:
 Baltimore Gas & Electric Company - Underground Gas Distribution
 Engineering - Damage Control - 659-0100
 Baltimore Gas & Electric Company - Underground Electric Distribution
 Engineering - Damage Control - 234-5691
 Chesapeake & Potomac Telephone Company - 726-0976
 State Highway Administration - 531-5553
 American Telephone and Telegraph - Cable Location Division - (801) 593-3553
 Colonial Pipeline Company - 781-4641
 9. Trees are to be protected from damage to maximum extent. Trees located within the construction strip are not to be removed or damaged by the contractor.
 10. Contractor shall remove trees, stumps, and roots along line of excavation as directed by the engineer. Payment for such removal shall be included in the unit price bid for construction of the main.
 11. Place regulation "Men Working" and warning signs as required to comply with Maryland State Highway Administration Manual of Traffic Control for Highway Construction and Maintenance Operations.
 12. All water mains to be D.I.P.
 13. Top of all water mains to have a minimum of 3 1/2' cover.
 14. Values adjacent to trees shall be strapped to tree in accordance with standard details.
 15. Block all fittings with concrete, see standards bound in specifications.
 16. Bury line elevation on fire hydrant shall be set to the elevation shown on the drawing. Fire hydrant shall be strapped and buttressed with concrete in accordance with standard details. Soil around the fire hydrant to be compacted in accordance with Sections 1003 and 1008 of the Standard Specifications.
 17. Water house connection shall have inside meter setting.

ITEM	QUANTITIES		MATERIAL / SUPPLIER
	BID	AS BUILT	
6" Water	253'	255'	ATLANTIC STATES DIP CL 82
6" Water	21'	20'	" " " " " "
8" x 6" T	"	"	TRINITY VALLEY
8" x 6" T	1	1	"
Fire Hydrant	1	1	MUELLER COMPANY
8" Valve	1	0	"
8" Plug	1	1	TRINITY VALLEY
8" Valve	1	1	MUELLER COMPANY

REVIEWED FOR HOWARD SOIL CONSERVATION DISTRICT AND MEETS TECHNICAL REQUIREMENT

[Signature] 10-9-87
 SIGNATURE DATE

U.S. SOIL CONSERVATION SERVICE

This Development Plan is approved for Soil Erosion and Sediment Control by the Howard County Conservation District

APPROVED: *[Signature]* 10/7/87
 HOWARD C.C.D. DATE

Sediment Control Measures for this Contract will be implemented in accordance with Article 21.03 of the Standard Specifications, and SDI 28-05

DEPARTMENT OF PUBLIC WORKS
 HOWARD COUNTY, MARYLAND

[Signature] 10/20/87
 DIRECTOR OF PUBLIC WORKS DATE

[Signature] 10-20-87
 CHIEF BUREAU OF ENGINEERING DATE

[Signature] 10-19-87
 CHIEF, LAND DEVELOPMENT DIVISION DATE

MACRIS, HENDRICKS, & WITMER, P.A.
 ENGINEERS - PLANNERS - SURVEYORS
 9220 WIGHTMAN ROAD
 GAITHERSBURG, MD. 20879
 (301) 670-0840

DES: JCG			
DRN: CK			
CHK: JCG			
DATE: 9/27/87	BY NO.	REVISION	DATE

PLAN & DETAILS
 CONTRACT 44-1716-D
 DATE 600' SCALE MAP NO. 48 BLOCK NO. 19

PARCEL F
 SECTION 2 AREA 1
JUNCTION INDUSTRIAL PARK
 ELECTION DISTRICT GILFORD No 6
 HOWARD COUNTY, MARYLAND 1 of 1

SCALE AS SHOWN
 SHEET 1 OF 1