


GENERAL NOTES

PART I

- APPROXIMATE LOCATION OF EXISTING MAINS ARE SHOWN. THE CONTRACTOR SHALL TAKE ALL NECESSARY PRECAUTIONS TO PROTECT EXISTING MAINS AND SERVICE AND MAINTAIN UNINTERRUPTED SUPPLY. ANY DAMAGE INCURRED SHALL BE REPAIRED IMMEDIATELY TO THE SATISFACTION OF THE ENGINEER AT THE CONTRACTOR'S EXPENSE.
- ALL HORIZONTAL CONTROLS ARE BASED ON MARYLAND STATE COORDINATES.
- ALL VERTICAL CONTROLS ARE BASED ON U.S.G.S. DATA.
- ALL PIPE ELEVATIONS ARE INVERT ELEVATIONS.
- CLEAR ALL UTILITIES BY A MINIMUM OF 6". CLEAR ALL POLES BY 2'-0" MINIMUM OR TUNNEL AS REQUIRED. THE OWNER HAS CONTACTED THE UTILITY COMPANIES AND HAS MADE ARRANGEMENTS FOR BRACING OF POLES AS SHOWN ON THE DRAWINGS. IN THE EVENT THE CONTRACTORS WORK REQUIRES THE BRACING OF ADDITIONAL POLES, ANY COST INCURRED BY THE OWNER FOR THE BRACING OF ADDITIONAL POLES, OR DAMAGE SHALL BE DEDUCTED FROM THE MONEY OWED THE CONTRACTOR. THE CONTRACTOR SHALL COORDINATE WITH THE UTILITY COMPANIES TO SCHEDULE THE BRACING OF POLES.
- FOR DETAILS NOT SHOWN ON THE DRAWINGS, AND FOR MATERIALS AND CONSTRUCTION METHODS, USE HOWARD COUNTY DESIGN MANUAL, VOL. IV STANDARD SPECIFICATIONS AND DETAILS FOR CONSTRUCTION THE CONTRACTOR SHALL HAVE A COPY OF VOL. IV ON THE JOB.
- WHERE TEST PITS HAVE BEEN MADE ON EXISTING UTILITIES THEY ARE NOTED BY THE SYMBOL  AT THE LOCATION OF THE TEST PIT. A NOTE OR NOTES CONTAINING RESULTS OF THE TEST PITS IS INCLUDED ON THE DRAWINGS. EXISTING UTILITIES IN THE VICINITY OF PROPOSED WORK FOR WHICH TEST PITS HAVE NOT BEEN DUG SHALL BE LOCATED BY THE CONTRACTOR TWO WEEKS IN ADVANCE OF CONSTRUCTION OPERATIONS AT HIS OWN EXPENSE.
- CONTRACTOR SHALL NOTIFY THE FOLLOWING UTILITIES OR AGENCIES AT LEAST FIVE WORKING DAYS BEFORE STARTING WORK SHOWN ON THESE PLANS. STATE HIGHWAY ADMINISTRATION 531-5533 BALTO. GAS AND ELECTRIC CO. - CONTRACTOR SERVICES 850-4620, GAS AND ELECTRIC CO. - UNDERGROUND DAMAGE CONTROL 859-9004, BALTO. GAS AND ELECTRIC CO. - TROUBLE SHOOTING 295-9001, MISS UTILITY- 1-559-0100, COLONIAL PIPELINE 795-1390, BUREAU OF UTILITIES, HOWARD CO. DEPT. OF PUBLIC WORKS 992-2366, C&P TELEPHONE 1-800-257-7777.
- TREES AND SHRUBS ARE TO BE PROTECTED FROM DAMAGE TO MAXIMUM EXTENT. TREES AND SHRUBS LOCATED WITHIN THE CONSTRUCTION STRIP ARE NOT TO BE REMOVED OR DAMAGED BY THE CONTRACTOR.
- CONTRACTOR SHALL REMOVE TREES, STUMPS, AND ROOTS ALONG THE LINE OF EXCAVATION. PAYMENT FOR SUCH REMOVAL SHALL BE INCLUDED IN THE UNIT PRICE BID FOR CONSTRUCTION OF THE MAIN.
- PLACE REGULATION * MEN WORKING * WARNING SIGNS AS REQUIRED TO COMPLY WITH MARYLAND STATE HIGHWAY ADMINISTRATION MANUAL FOR HIGHWAY CONSTRUCTION AND MAINTENANCE OPERATIONS.

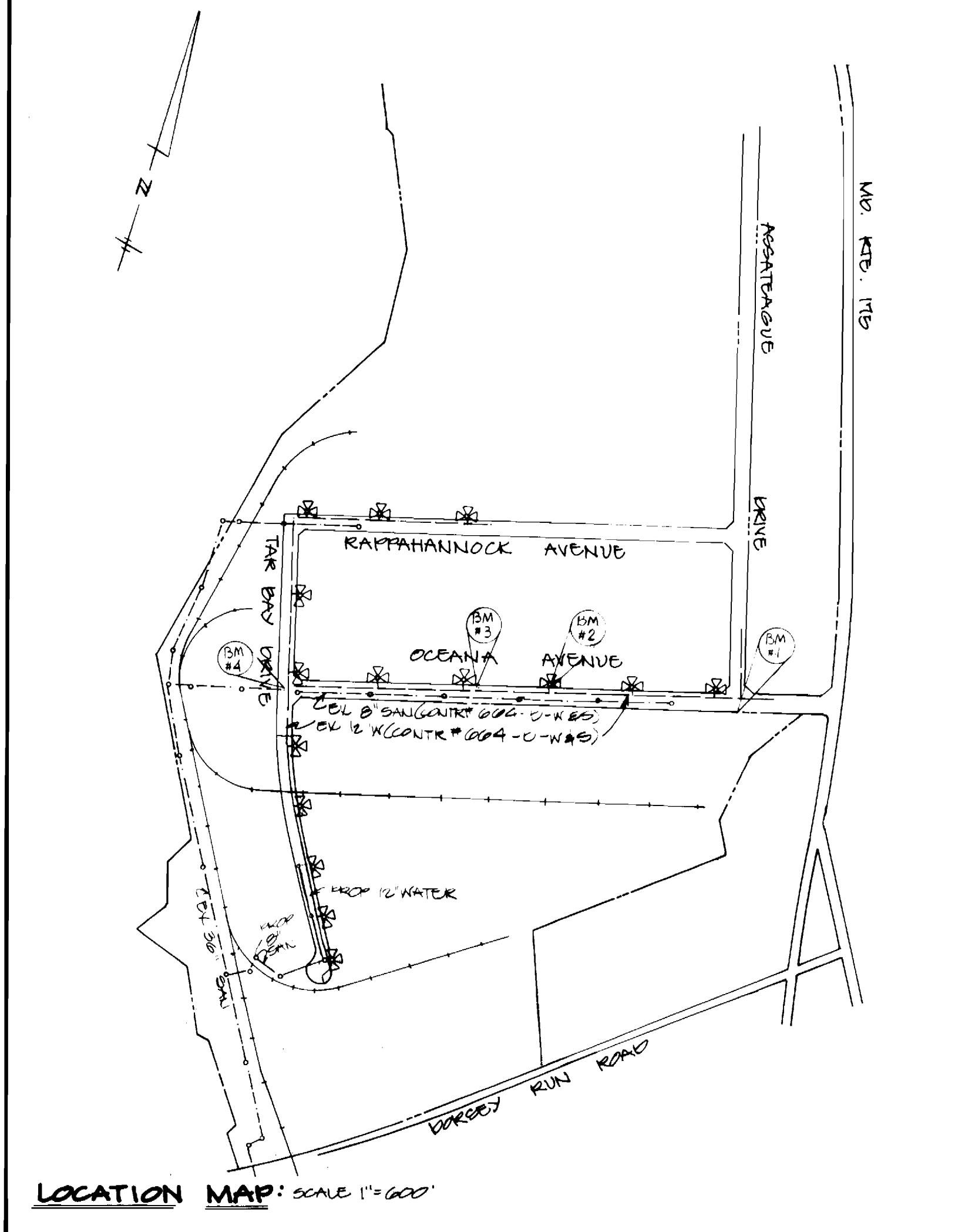
PART II - WATER

- ALL WATER MAINS TO BE D.I.P. UNLESS OTHERWISE NOTED.
- TOPS OF ALL WATER MAINS TO HAVE A MINIMUM OF 3.5' COVER UNLESS OTHERWISE NOTED.
- VALVES ADJACENT TO TEES SHALL BE STRAPPED TO TEES.
- ALL FITTINGS SHALL BE BUTTRESSED OR ANCHORED WITH CONCRETE IN ACCORDANCE WITH THE STANDARD DETAIL UNLESS OTHERWISE PROVIDED ON THE DRAWINGS.
- FIRE HYDRANTS SHALL BE SET TO THE BURY LINE ELEVATION SHOWN ON THE DRAWINGS. ALL FIRE HYDRANTS SHALL BE STRAPPED AND BUTTRESSED WITH CONCRETE IN ACCORDANCE WITH THE STANDARD DETAILS. SOIL AROUND THE FIRE HYDRANT SHALL BE COMPACTED IN ACCORDANCE WITH SECTION 1003 AND 1008 OF THE STANDARD SPECIFICATIONS.
- THE CONTRACTOR SHALL NOT OPERATE ANY WATER MAIN VALVES ON THE EXISTING WATER SYSTEM.
- ALL WATER HOUSE CONNECTIONS SHALL BE INSIDE METER SETTINGS UNLESS OTHERWISE NOTED.
- ALL FIRE HYDRANTS TO BE SET THREE FEET BEHIND PROPOSED FACE OF CURB UNLESS OTHERWISE NOTED.
- ALL WATER HOUSE CONNECTIONS SHALL COMPLY WITH HOWARD CO. STD. 3.21 AS SHOWN ON ART. 40, SPECIAL PROVISIONS.
- MINIMUM CRIMP RADIUS WILL BE SPECIFIED BY PIPE MANUFACTURER.
- WATER MAINS AND WATER HOUSE CONNECTION LINES MUST BE PLACED SO AS TO HAVE AT LEAST ONE FOOT SEPARATION FROM THE SEWER MAIN OR SEWER HOUSE CONNECTION AS THEY PASS ABOVE IT.

PART III - SEWER

- ALL SEWER MAINS SHALL BE C.S.P.X., R.C.S.P., V.C.P.X., A.C.P. CLASS 2400 OR P.V.C. UNLESS OTHERWISE NOTED.
- THE CONTRACTOR SHALL PROVIDE A JOINT IN ALL SEWER MAINS WITHIN 2'-0" OF EXTERIOR MANHOLE WALL.
- ALL MANHOLES SHALL BE 4'-0" INSIDE DIAMETER UNLESS OTHERWISE NOTED.
- MANHOLES SHOWN WITH 12" WALLS ARE BRICK MANHOLES ONLY.
- MANHOLES DESIGNATED W.T. IN THE PLAN AND PROFILE SHALL HAVE WATERTIGHT FRAME AND COVERS, STANDARD DETAIL G 5.52 WHERE WATERTIGHT MANHOLE FRAME AND COVER IS USED, SET TOP OF FRAME 1'-6" ABOVE FINISHED GRADE UNLESS NOTED ON DRAWINGS.
- MANHOLES LOCATED WITHIN PROPOSED ROADWAYS SHALL HAVE STANDARD HEAVY TRAFFIC MANHOLES FRAMES AND COVERS, STANDARD DETAIL G 5.51
- THE CONTRACTOR SHALL ARRANGE TO HAVE EXISTING UNDERGROUND CABLE FIELD LOCATED PRIOR TO ANY EXCAVATION FOR THE SEWER MAIN.

NOTE: ALL D.I.P. FITTINGS SHALL BE IN ACCORDANCE WITH AWWA SPECIFICATION 3-153 DUCTILE IRON COMPACT FITTINGS, 2" THROUGH 12" FOR WATER AND OTHER LIQUIDS



Benchmark: 209 reset Elevation: 253.34
 Description: G.R.C. Brass Marker Set Concrete, East Side Rte. 17B, 45' From Edge of Paving, And 30' From The South Curb of The North Entrance to The Patient Institute.

BM. 1 x-cut 24.25' Lt. & 8+20⁰⁰ Oceana Avenue Elev. 252.59'
 BM. 2 x-cut In Hydrant Hold-Down Bolt 15+00 Oceana Ave. Elev. 252.53
 BM. 3 x-cut 24.25' Lt. & 19+00 Oceana Avenue Elevation. 218.13
 BM. 4 x-cut 22.25' Rt. & 0+00 Tar Bay Drive & Pt. Elev. 191.26

Type of Building	Industrial
Number of Lots	N/A
Number of W.H.C.	N/A
Number of S.H.C.	N/A
Drainage Area	Little Patuxent
WATER CODE	872
SEWER CODE	3130000

QUANTITIES			
ITEM	ESTIMATED	AS-BUILT	MATERIAL/SUPPLIER
6" DIP	05	05	MUNICIPAL CONTRACTORS SUPPLY
12" DIP	1395	1397	M&C SUPPLY
FH	5	5	M&C SUPPLY
6" VALVE	5	5	M&C SUPPLY
12" VALVE	2	2	M&C SUPPLY
12" X 6" TEE	5	5	M&C SUPPLY
12" X 12" TEE	1	1	M&C SUPPLY
12" V.D. BEND	2	2	M&C SUPPLY
2" COP & BUTTRESS	2	2	M&C SUPPLY
8" SEWER PLUS 151 LF D.I.P.	877 LF	865 LF	M&C SUPPLY
SMH	6	6	ATLANTIC CONCRETE PRODUCTS
1" AIR RELEASE VALVE MANHOLE	1	1	M&C SUPPLY

Reviewed For Howard Soil Conservation District and Meets Technical Requirements

James M. Mattem 4/22/88
 U.S. Soil Conservation Service Date:

The Development Plan is Approved For Soil Erosion and Sediment Control By The Howard Soil Conservation District

Approved: *Stephen L. Fisher* 4/23/88
 HOWARD SOIL CONSERVATION DISTRICT Date:

Sediment Control Measures For This Contract Will Be Implemented In Accordance With Section 219 of The Standard Specifications, AND F-88-11P

DEPARTMENT OF PUBLIC WORKS
 HOWARD COUNTY, MARYLAND
 Director of Public Works DATE: 4/27/88
 Chief, Bureau of Utilities DATE:
 Chief, Bureau of Engineering DATE:
 Chief, Land Development Division DATE:

ENGINEER
GEORGE W.M. STEPHENS JR.
 AND ASSOCIATES INC.
 803 ALLEGHENY AVENUE
 TOWSON, MD. 21284
 301-925-8120

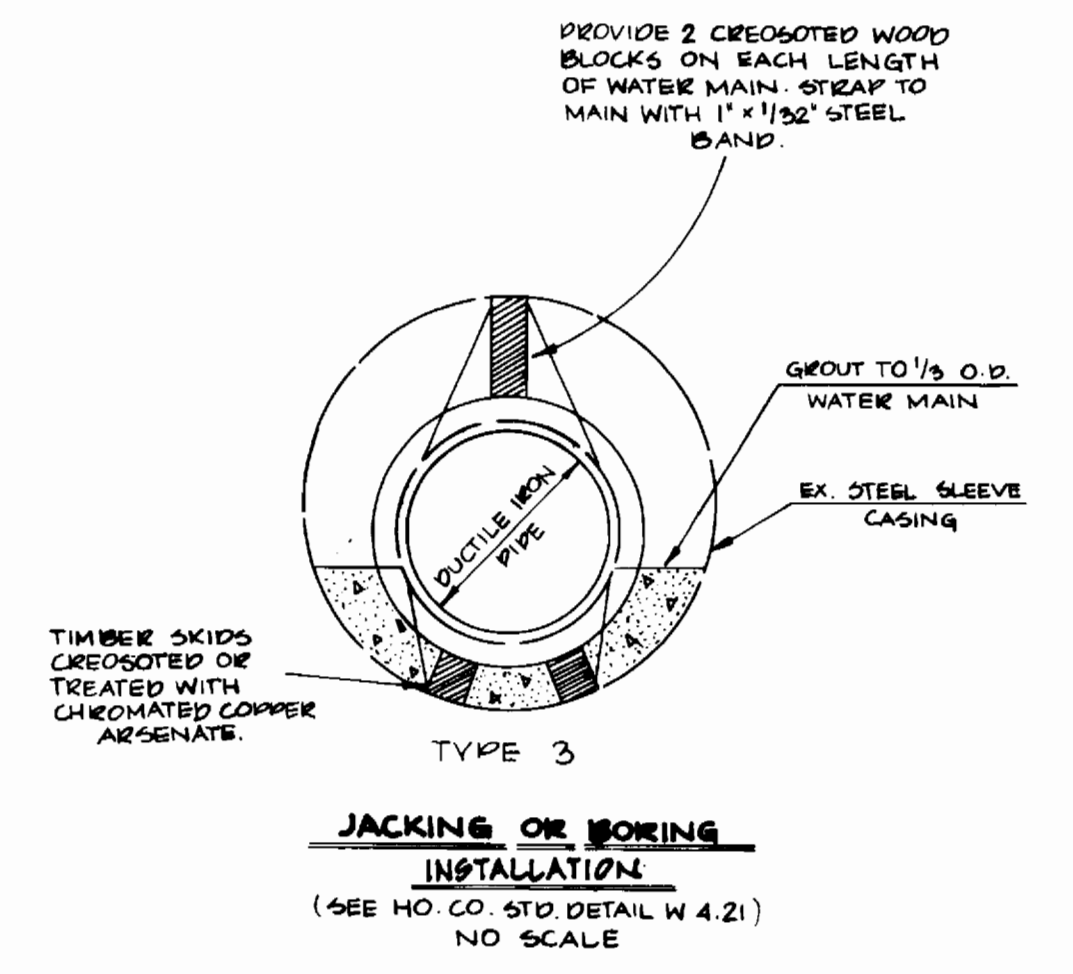
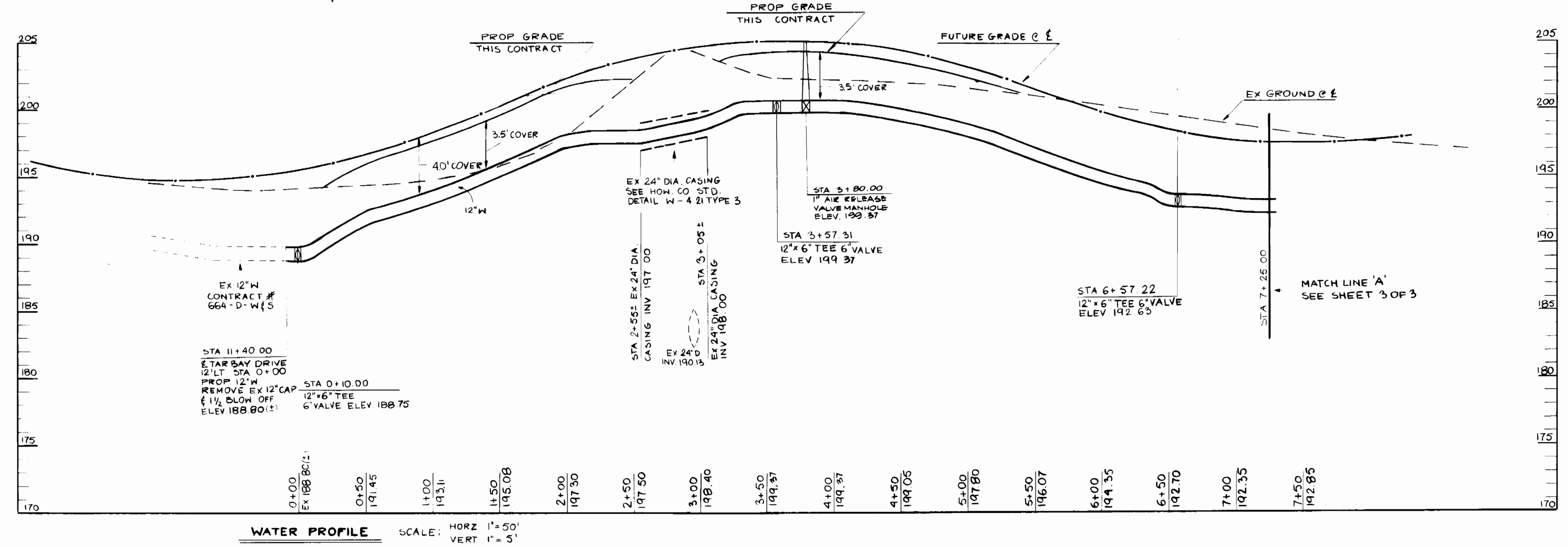
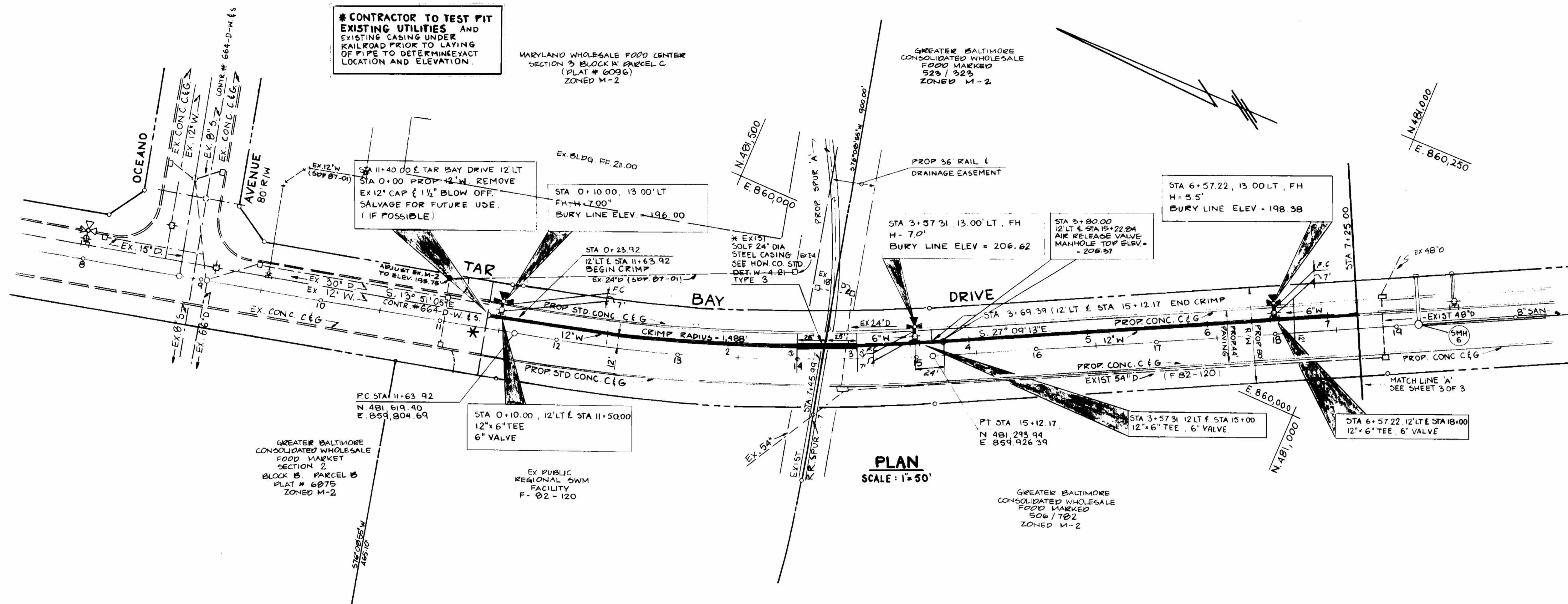
Designed: W.Z.
 Drawn: D.A.L.
 Checked: T.C.

BY	NO.	REVISION	DATE
I		AS BUILT REVISION	5.25.92

GENERAL NOTES
 for
WATER & SEWER
 Contract No. 2A-1712-D
 600' SCALE MAP NO. 43 BLOCK NO. 20 & 21

MARYLAND WHOLESALE FOOD CENTER
 Tar Bay Drive
 HOWARD COUNTY, MD. ELECTION DIST. NO. 0
 JUNE 10, 1987

SCALE SHOWN
 SHEET 1 OF 3



* CONTRACTOR TO TEST PIT EXISTING UTILITIES AND EXISTING CASING UNDER RAILROAD PRIOR TO LAYING OF PIPE TO DETERMINE EXACT LOCATION AND ELEVATION.

MARYLAND WHOLESALE FOOD CENTER SECTION 3 BLOCK M PARCEL C (PLAT # 6099) ZONED M-2

GREATER BALTIMORE CONSOLIDATED WHOLESALE FOOD MARKET SECTION 2 BLOCK B PARCEL B (PLAT # 6875) ZONED M-2

GREATER BALTIMORE CONSOLIDATED WHOLESALE FOOD MARKET SECTION 2 BLOCK B PARCEL B (PLAT # 6875) ZONED M-2

Reviewed For Howard Soil Conservation District And Meets Technical Requirements
 U.S. Soil Conservation Service Date:

The Development Plan is Approved For Soil Erosion and Sediment Control By The Howard Soil Conservation District
 Approved:
 Howard Soil Conservation District Date:

Sediment Control Measures For This Contract Will Be Implemented In Accordance With Section 214 of The Standard Specifications.

DEPARTMENT OF PUBLIC WORKS
 HOWARD COUNTY, MARYLAND
 DIRECTOR OF PUBLIC WORKS DATE: 4-27-89
 CHIEF, BUREAU OF UTILITIES DATE:
 CHIEF, BUREAU OF ENGINEERING DATE:
 CHIEF, BUREAU OF LAND DEVELOPMENT DATE:

ENGINEER
GEORGE WM. STEPHENS JR.
 AND ASSOCIATES INC.
 200 ALBEMARLY AVE.
 TOWSON, MD. 21284
 301-923-8120



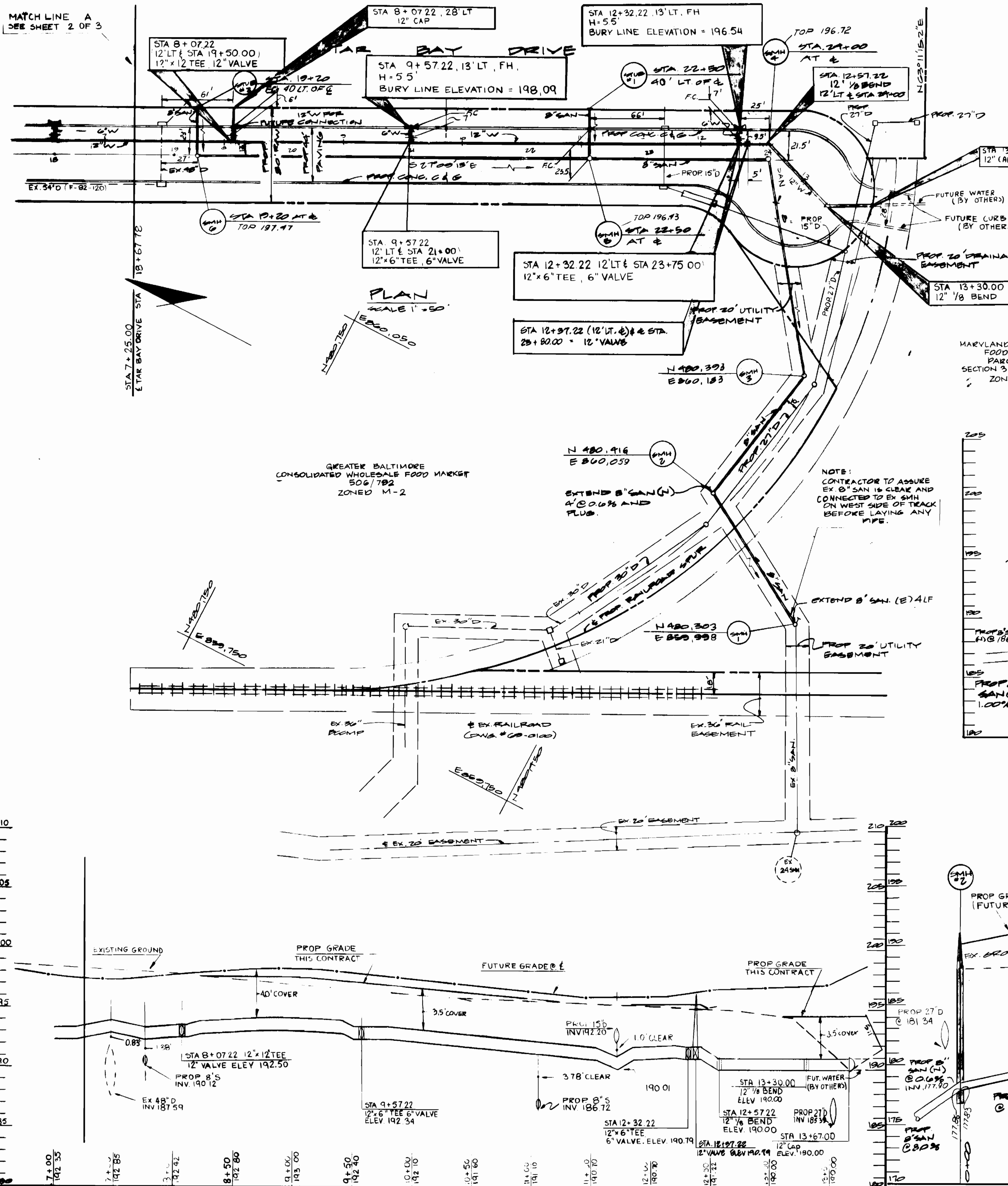
Designed: W.Z.
 Drawn: J.M.
 Checked: Tc

By	No.	Revisions	Date
	1	AS BUILT REVISION	5-23-89

PLAN & PROFILE
 for
 WATER & SEWER
 Contract No. 24-1712-D
 600' SCALE MAP NO. 4B BLOCK NO. 20 & 21

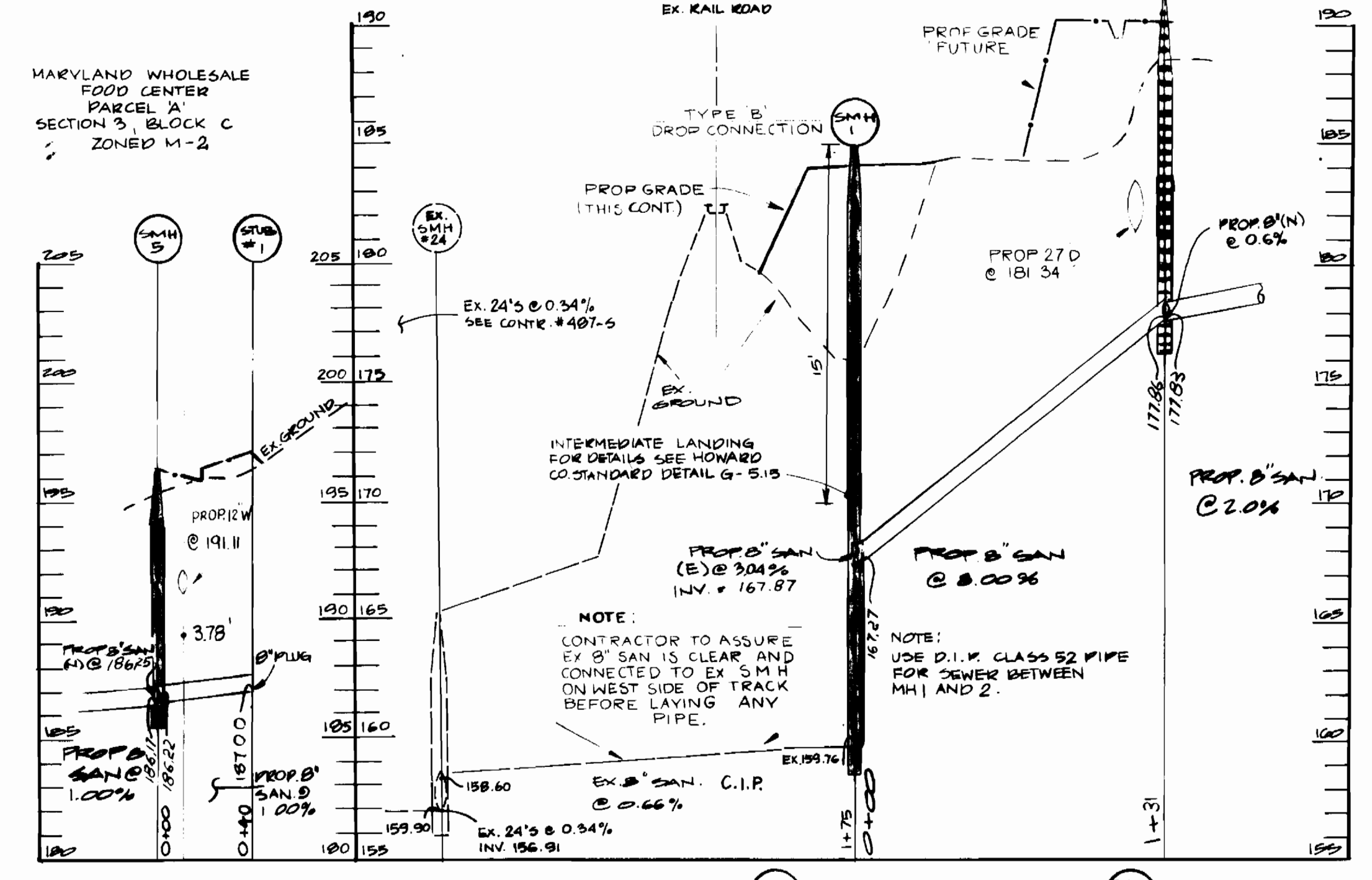
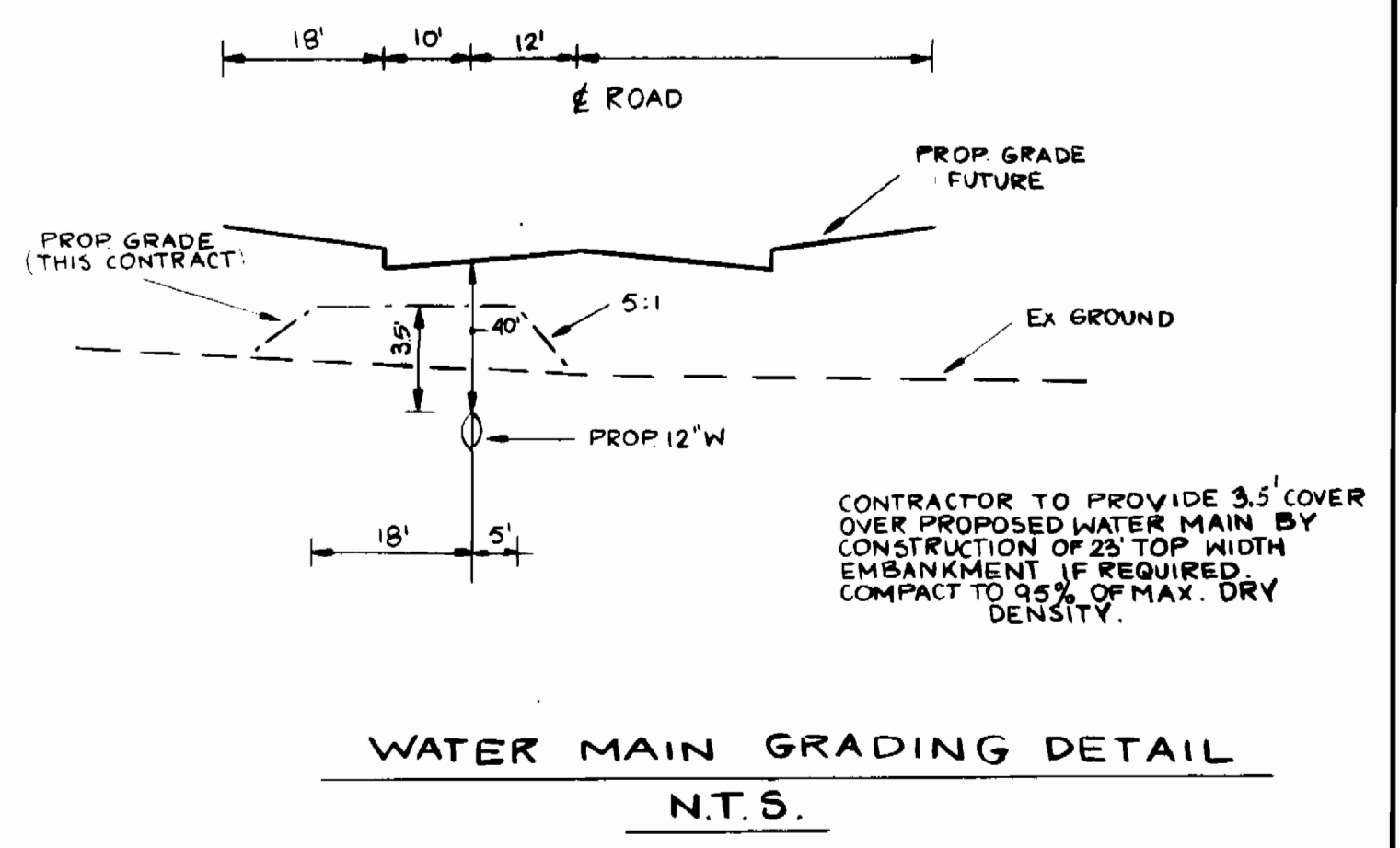
MARYLAND WHOLESALE FOOD CENTER
 Tar Bay Drive
 HOWARD COUNTY, MD
 ELECTION DIST. NO. 9
 JUNE 19, 1987

SCALE AS SHOWN
 SHEET 2 OF 5



MANHOLE SCHEDULE

NO.	TYPE	ELEVATION			REMARKS
		TOP	INV IN	INV OUT	
SMH 1	8" D' PRECAST MANHOLE	189.68	187.87	189.61	SEE HOWARD CO DETAIL S-1-B2
SMH 2	8" D' PRECAST MANHOLE	190.86	177.90	177.86	SEE HOWARD CO DETAIL S-5-11
SMH 3	8" D' PRECAST MANHOLE	193.28	180.66	180.58	SEE HOWARD CO DETAIL S-5-11
SMH 4	8" D' PRECAST MANHOLE	196.72	181.78	181.70	SEE HOWARD CO DETAIL S-5-11
SMH 5	8" D' PRECAST MANHOLE	196.43	186.25	186.17	SEE HOWARD CO DETAIL S-5-11
SMH 6	8" D' PRECAST MANHOLE	197.47	186.24	189.18	SEE HOWARD CO DETAIL S-5-11



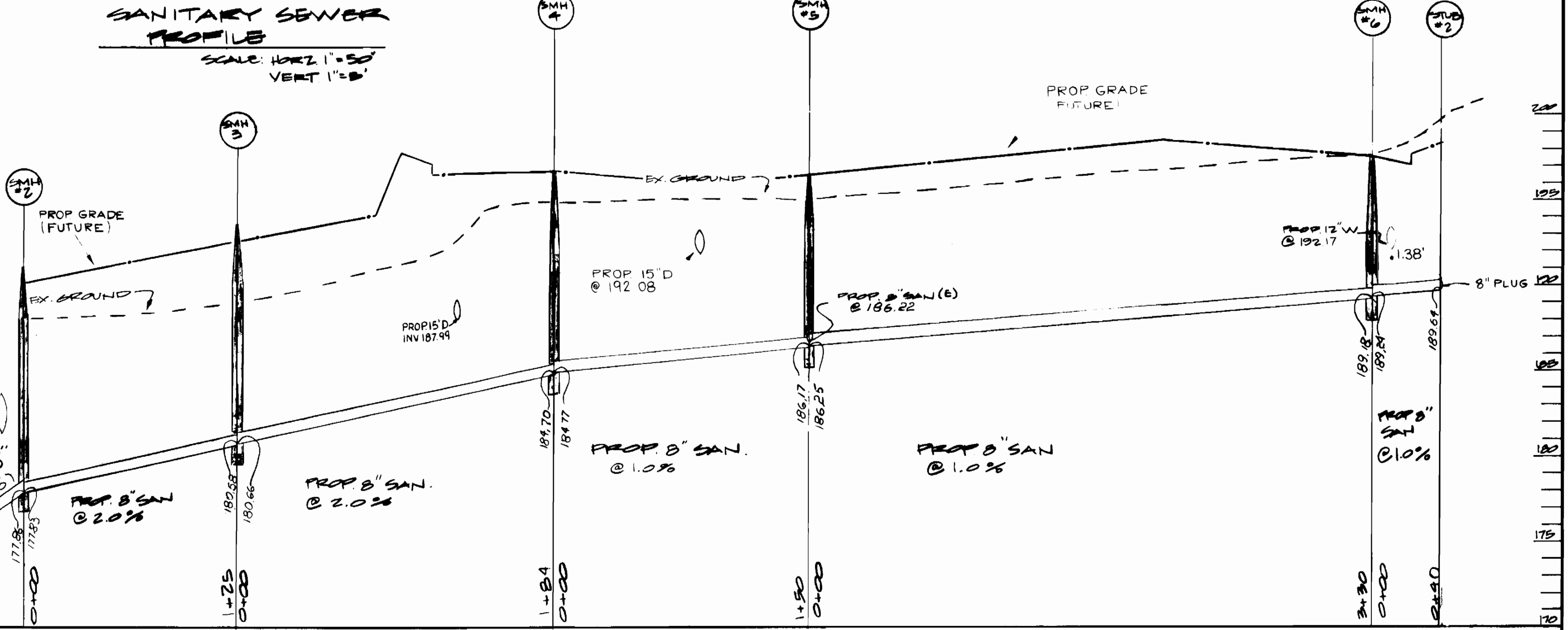
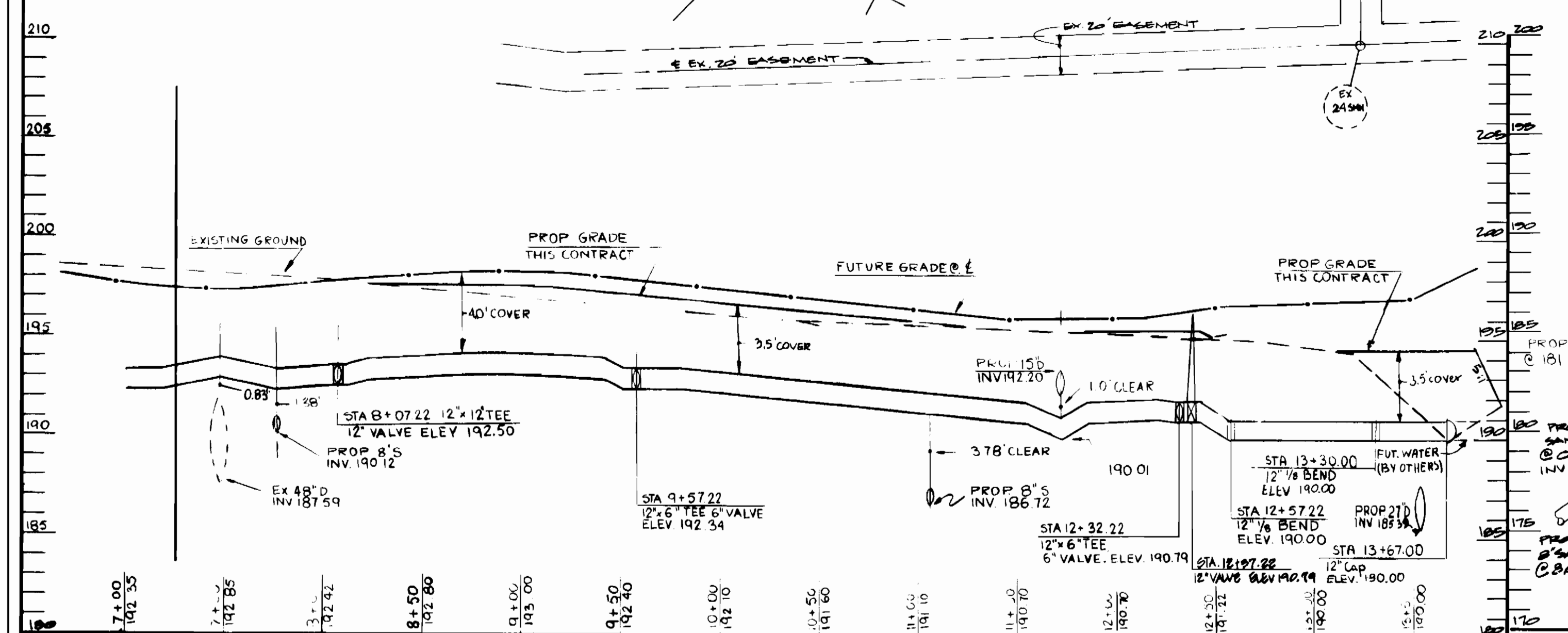
REVIEWED FOR HOWARD SOIL CONSERVATION DISTRICT AND MOETS TECHNICAL REQUIREMENTS.

US SOIL CONSERVATION SERVICE DATE

THE DEVELOPMENT PLAN IS APPROVED FOR GRASS AND SEEDMENT CONTROL BY THE HOWARD SOIL CONSERVATION DISTRICT APPROVED.

HOWARD SOIL CONSERVATION DISTRICT DATE

SEEDMENT CONTROL MEASURES FOR THIS CONTRACT WILL BE IMPLEMENTED IN ACCORDANCE WITH SECTION 210 OF THE STD. SPEC.

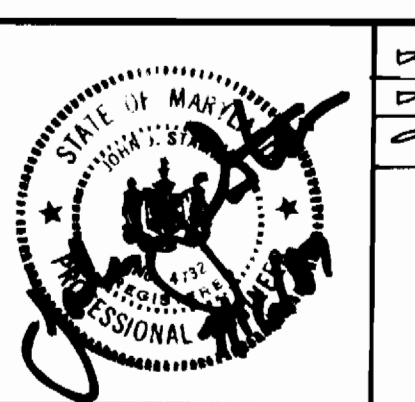


DEPARTMENT OF PUBLIC WORKS
HOWARD COUNTY, MARYLAND

Robert M. Berman 4-27-88
DIRECTOR OF PUBLIC WORKS DATE

GEORGE W. STEPHENS JR.
AND ASSOCIATES

303 ALLEGHANY AVENUE
TOWSON MARYLAND 21284
(301) 825-8120



DESIGNED	BY	NO.	REVISIONS	DATE
W.E.	J.S.	1	AS BUILT REVISION	8-25-90
CHECKED	W.E.			

PLAN AND PROFILE
FOR
WATER AND SEWER
CONTRACT NO. 24-VIIIC-D

SCALE AS SHOWN

SHEET 3 OF 3

600' SCALE MAP NO. 43 BLOCK NO. 20 & 21

MARYLAND WHOLESALE FOOD CENTER

TAR BAY DRIVE
HOWARD COUNTY MD

SECTION DISTRICT #6
JUNE 10 1987