

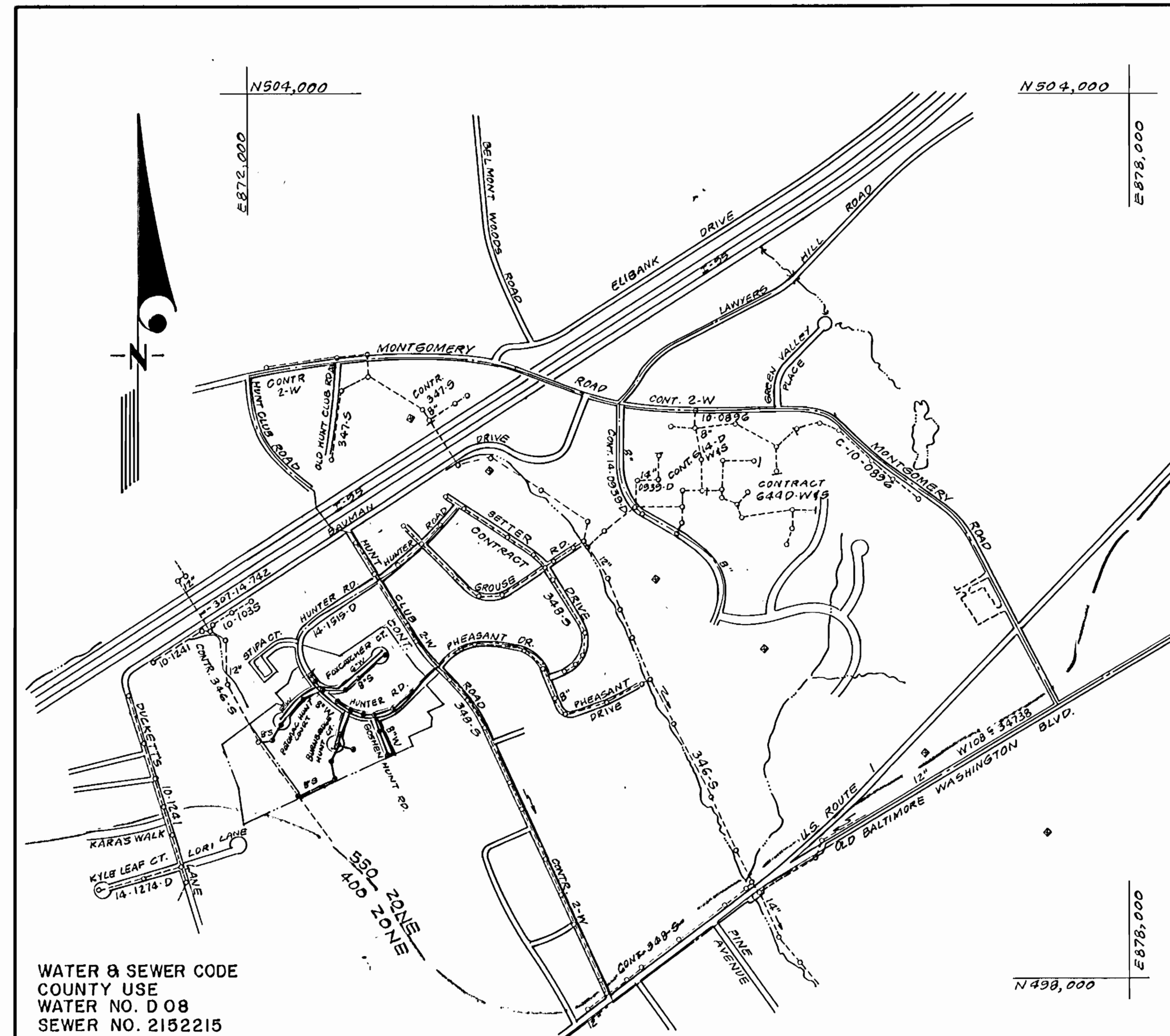
SEWER HOUSE CONNECTION TABLE

LOTS	INV@R	MIN. C.	LOTS	INV@R	MIN. C.
77	185.5	188.9	113	197.2	204.0
78	184.3	187.8	114	198.2	205.0
79	182.3	185.6	115	201.8	205.3
80	180.6	184.1	116	205.9	209.7
81	172.2	175.4	117	203.5	209.5
82	171.3	175.1	119	204.7	210.9
83	178.1	181.6	120	199.7	203.3
84	179.2	182.3	121	191.6	195.0
85	182.0	185.3	122	186.1	192.7
86	180.9	184.3	124	182.3	185.8
87	174.3	177.7	125	180.2	183.6
88	171.1	174.8	126	179.4	183.0
89/90	170.3	176.9	127	178.1	181.7
91	165.3	169.1	128	186.0	189.5
92	169.1	169.1	129	187.9	191.5
93	164.2	167.5	130	189.6	193.4
94	157.8	161.6	131	191.5	195.5
95	160.5	164.1	132	196.2	199.8
96	164.6	168.6	133	200.0	203.8
97	168.8	170.4	134	205.0	209.2
98	165.0	168.4	135	203.9	213.5
99	173.3	176.4	136	209.0	213.1
100	172.4	176.9	137	208.0	214.1
101	172.7	183.3	138	204.0	207.4
102	181.7	185.0	140	193.8	202.1
103	182.0	188.5	141	191.8	195.1
104	168.2	171.3	142	188.3	191.9
105	168.0	172.1	143	184.4	189.0
106	183.0	186.6	144	184.3	192.1
107	183.2	186.8	146	195.0	198.8
108	182.8	189.3	148	204.2	210.4
109	182.7	189.1	149	185.6	192.3
110	182.3	185.9	149	209.0	212.6
111	185.2	188.6	145	185.0	181.2
112	181.3	193.0			

TYPE OF BUILDING	Single Family
NO. OF LOTS	70
NO. OF WHC's	70
NO. OF SHC's	70
DRAINAGE AREA	Patapsco

GENERAL NOTES

- Approximate location of existing mains are shown. The contractor shall take all necessary precautions to protect existing mains and services and maintain uninterrupted supply. Any damage incurred shall be repaired immediately to the satisfaction of the Inspector, at the contractor's expense.
- All horizontal controls are based on Maryland State Coordinates.
- All vertical controls are based on U.S.G.S. Datum.
- All pipe elevations shown are invert elevations.
- Clear all utilities by a minimum of 6" clear all poles by 2'-0" minimum or tunnel as required. Any cost incurred to the contractor for tunneling or bracing at poles shall be included in unit prices bid for excavation and backfill.
- For details not shown on the drawings use Howard County Standard Details.
- For materials and construction methods use Howard County Standard Specifications and Howard County Design Manual, Volume IV. The Contractor shall have Volume IV on the job.
- Contractor shall locate existing utilities a minimum of two (2) weeks in advance of construction operations in the vicinity of proposed utilities at his own expense.
- Contractor shall notify the following utilities or agencies at least five (5) working days before starting work shown on these plans.
 - State Highway Administration - 531-5533
 - Baltimore Gas & Electric Company - Underground Damage Control - 859-9004
 - Baltimore Gas & Electric Company - Contractor Services - 850-4620
 - Baltimore Gas & Electric Company - Trouble Shooting - 298-9001
 - "Miss Utility" - 1-800-257-7777
 - Chesapeake & Potomac (C & P) Telephone Company - 1-800-257-7777
 - Bureau of Utilities Howard County - 992-2566
 - Colonial Pipeline Company - 798-1390
- Trees are to be protected from damage to maximum extent. Trees located within the construction strip are not to be removed or damaged by the contractor.
- Contractor shall remove trees, stumps, and roots along line of excavation as directed by the Inspector. Payment for such removal shall be included in the unit price bid for excavation and backfill.
- Place regulation "Men Working" and warning signs as required to comply with Maryland State Highway Administration Manual of Traffic Control for Highway Construction and Maintenance Operations.
- All water mains to be D.I.P. Class 52 unless otherwise noted.
- Top of all water mains to have a minimum of 3'-1/2' cover unless otherwise noted.
- Valves adjacent to tees shall be strapped to tees.
- Block all fittings with concrete.
- Bury line elevations on fire hydrants shall be set to the elevations shown on the drawings. All fire hydrants shall be strapped and buttressed with concrete in accordance with standard details. Soil around the fire hydrant to be compacted in accordance with Sections 1003 & 1008 of the Standard Specifications.
- Lots 145 & 144 shall have outside meter settings; all other lots shall have inside meter settings.
- The contractor shall not operate any water main valves on the existing system.
- All sewer mains shall be C.S.P.X., V.C.P.X., or P.V.C. unless otherwise noted.
- The contractor shall provide a joint in all sewer mains within 2'-0" of exterior manhole wall.
- All manholes shall be 4'-0" inside diameter, unless otherwise noted.
- Water main and water house connection lines must have a minimum of one foot separation from the sanitary sewer and sewer house connections as they cross. Except at crossings, water and sewer lines shall have a minimum horizontal separation of 10'.
- Manholes designated thus: WT, shall have a Watertight Frame and Cover.
- All D.I.P. Fittings shall be in accordance with AWWA Specification C-153 Ductile Iron Compact Fittings, 3" through 12" for water and other liquids.



WATER & SEWER CODE
COUNTY USE
WATER NO. D 08
SEWER NO. 2152215

VICINITY MAP
SCALE: 1" = 600'

CONTRACT NO. 14-1710 - D
HUNT CLUB ESTATES
LOTS 77 THRU 148, SECTION 5 AREA 2
A RESUBDIVISION OF
LOT 76, SECTION 5 AREA 1
HOWARD COUNTY, MARYLAND
DEPARTMENT OF PUBLIC WORKS

Sediment Control Measures will be implemented in accordance with Section 219 of the Specifications & with Road Construction Plan F-83-109 Drawing, Sediment & Erosion Control.

REVIEWED FOR HOWARD SOIL CONSERVATION DISTRICT AND MEETS TECHNICAL REQUIREMENTS
[Signature] 4/27/89
SIGNATURE DATE

U.S. SOIL CONSERVATION SERVICE
This Development Plan is approved for Soil Erosion and Sediment Control by the Howard Soil Conservation District.

APPROVED:
[Signature] 4/24/89
Howard S.C.D. DATE

QUANTITIES			
ITEM	EST'D	AS BUILT	MATERIAL / SUPPLIER
8"W	2,159 LF	2152.5 LF	GRIFFEN PIPE PRODUCTS CO / GRIFFEN
6"W	655 LF	708.5 LF	GRIFFEN PIPE PRODUCTS CO / GRIFFEN
8" S	3,188 LF	3133.5 LF	NATIONAL / MUNICIPAL & CONTRACTOR SALES, INC.
4" S H C	1,933 LF	1892.2 LF	NATIONAL / MUNICIPAL & CONTRACTOR SALES, INC.
1" WHC	885 LF	841.8 LF	NATIONAL / MUNICIPAL & CONTRACTOR SALES, INC.
3/4" WHC	820 LF	862.5 LF	NATIONAL / MUNICIPAL & CONTRACTOR SALES, INC.
F.H.	5 EA	5 EA	KENNEDY / MUNICIPAL & CONTRACTOR SALES, INC.
4'-0" DIA. MH	23 EA	23 EA	ATLANTIC DUC UTILITY SUPPLY, INC.
8" V	4 EA	4 EA	KENNEDY / MUNICIPAL & CONTRACTOR SALES, INC.
6" V (excl. F.H.)	3 EA	3 EA	KENNEDY / MUNICIPAL & CONTRACTOR SALES, INC.
8" x 8" T.S. & V.	1 EA	1 EA	KENNEDY / MUNICIPAL & CONTRACTOR SALES, INC.
BLOWOFF	2 EA	2 EA	1 MUNICIPAL & CONTRACTOR SALES, INC.
3/4" METER BOX	2 EA	2 EA	1 MUNICIPAL & CONTRACTOR SALES, INC.

DEPARTMENT OF PUBLIC WORKS
HOWARD COUNTY, MARYLAND

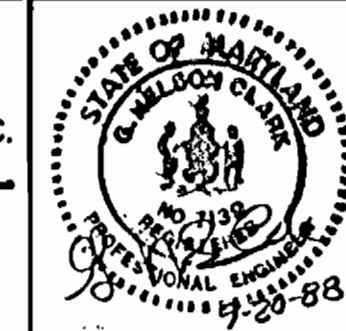
[Signature] 4-27-89
DIRECTOR OF PUBLIC WORKS DATE

[Signature] 4-21-89
CHIEF, BUREAU OF UTILITIES DATE

[Signature] 4/21/89
CHIEF, LAND DEVELOPMENT DIV. DATE

CFE CLARK, FINEPROCK & SACKETT, INC.
ENGINEERS, PLANNERS, SURVEYORS

7133 MINSTREL WAY COLUMBIA MARYLAND 21045
(301) 391-7500 BALTO. (301) 821-8100 WASH.



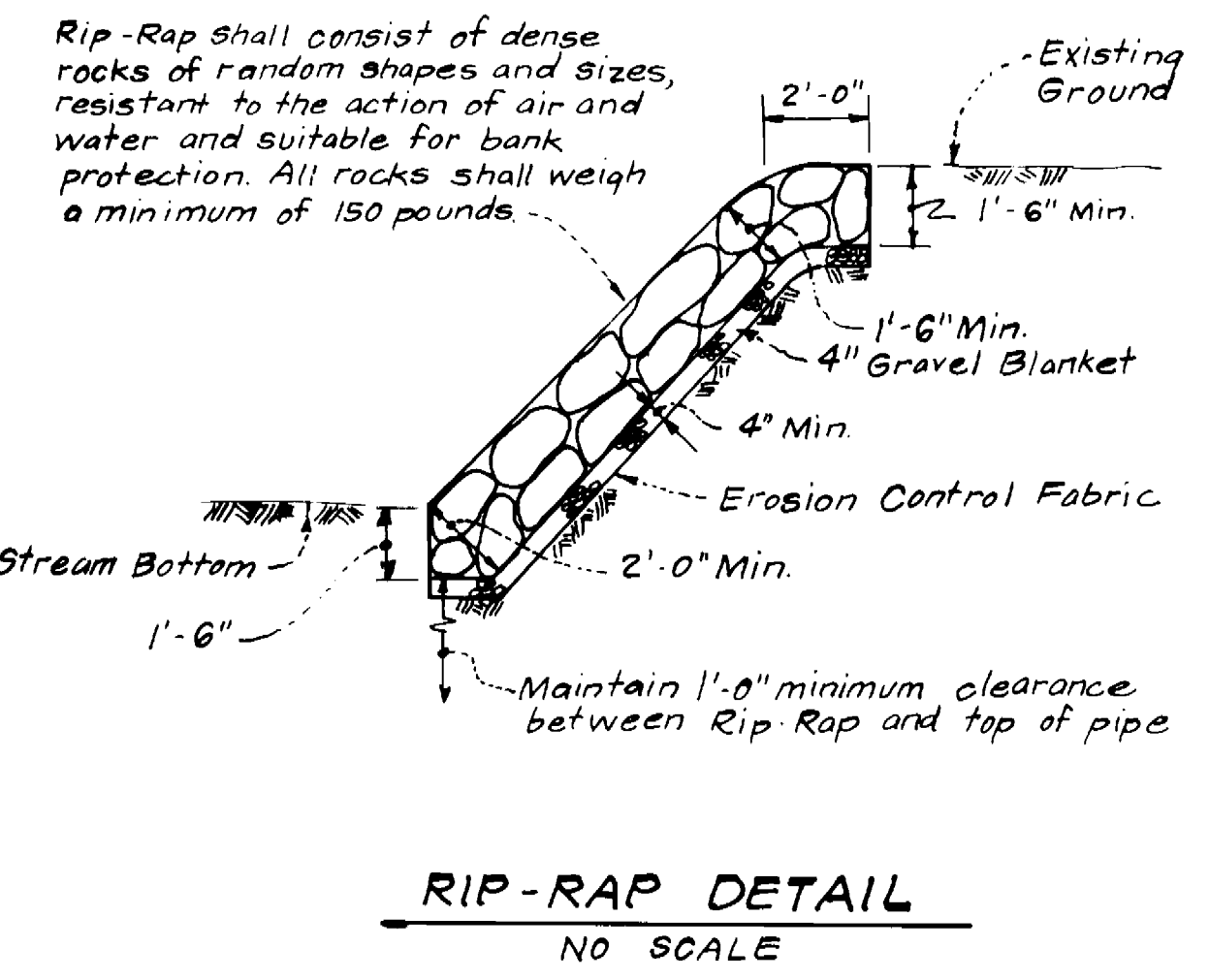
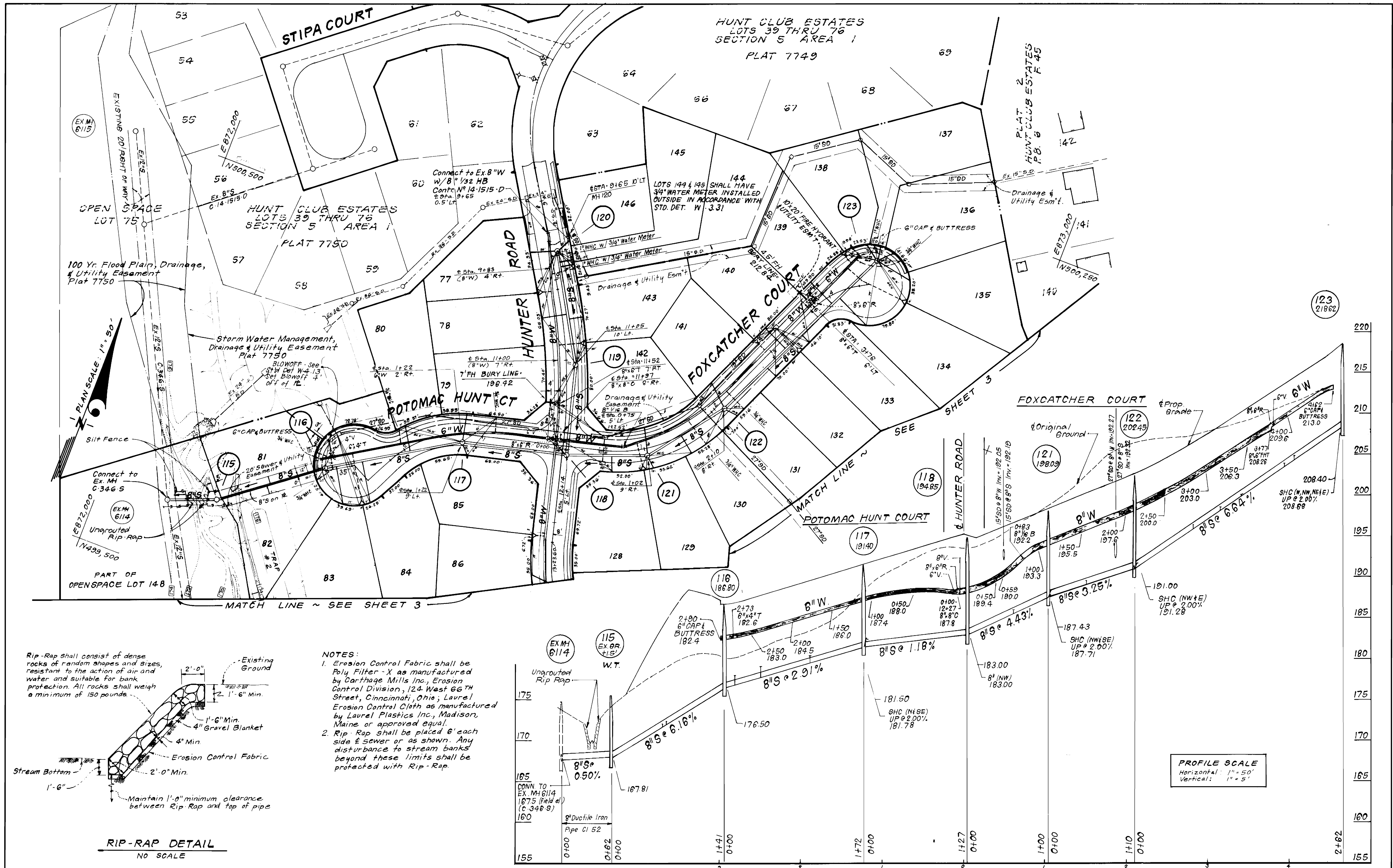
DES: JTR			
DRN: VLM			
CHK: JTR			
DATE: 9-88	BY NO.	REVISION	DATE

TITLE SHEET

600' SCALE MAP NO. 38 BLOCK NO.

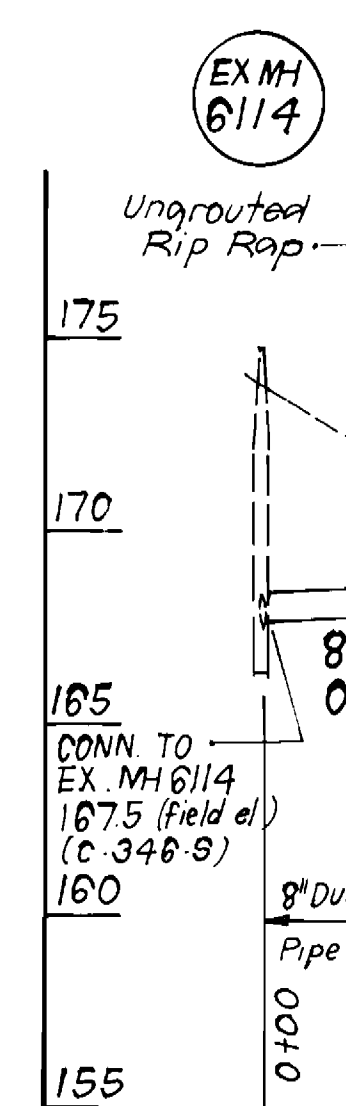
HUNT CLUB ESTATES
LOTS 77 THRU 148 SECTION 5 AREA 2
A RESUBDIVISION OF
LOT 76, SECTION 5 AREA 1
197th ELECTION DISTRICT
CONTRACT NO. 14-1710 - D

SCALE AS SHOWN
SHEET 1 OF 4



NOTES:

- Erosion Control Fabric shall be Poly Filter - X as manufactured by Carthage Mills Inc., Erosion Control Division, 124 West 66th Street, Cincinnati, Ohio; Laurel Erosion Control Cloth as manufactured by Laurel Plastics Inc., Madison, Maine or approved equal.
- Rip-Rap shall be placed 6' each side of sewer or as shown. Any disturbance to stream banks beyond these limits shall be protected with Rip-Rap.



PROFILE SCALE
 Horizontal: 1" = 50'
 Vertical: 1" = 5'

DEPARTMENT OF PUBLIC WORKS
 HOWARD COUNTY, MARYLAND

John O'Hara
 DIRECTOR OF PUBLIC WORKS
 DATE: 4-27-89

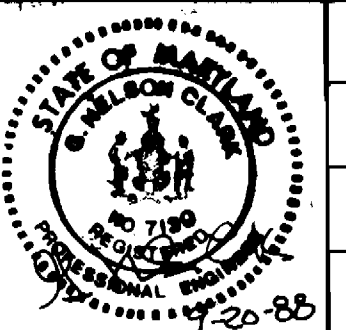
Robert Quinn
 CHIEF, BUREAU OF UTILITIES
 DATE: 4-21-89

Michael J. ...
 CHIEF, BUREAU OF ENGINEERING
 DATE: 4-27-89

...
 CHIEF, LAND DEVELOPMENT DIV.
 DATE: 4-27-89

CFS CLARK - FINEFROCK & SACKETT, INC.
 ENGINEERS - PLANNERS - SURVEYORS

7135 MINSTREL WAY COLUMBIA MARYLAND 21045
 (301) 381-7500 BALTO. (301) 621-8100 WASH.



DES: JTR			
DRN: VLM			
CHK: JTR			
DATE: 9-88			
BY: NO.	REVISION	DATE	
	1	Revised lot lines & lot frontages Lots 77-81 & 05-75	12-3-88

PLAN & PROFILES OF
 WATER & SEWER MAINS

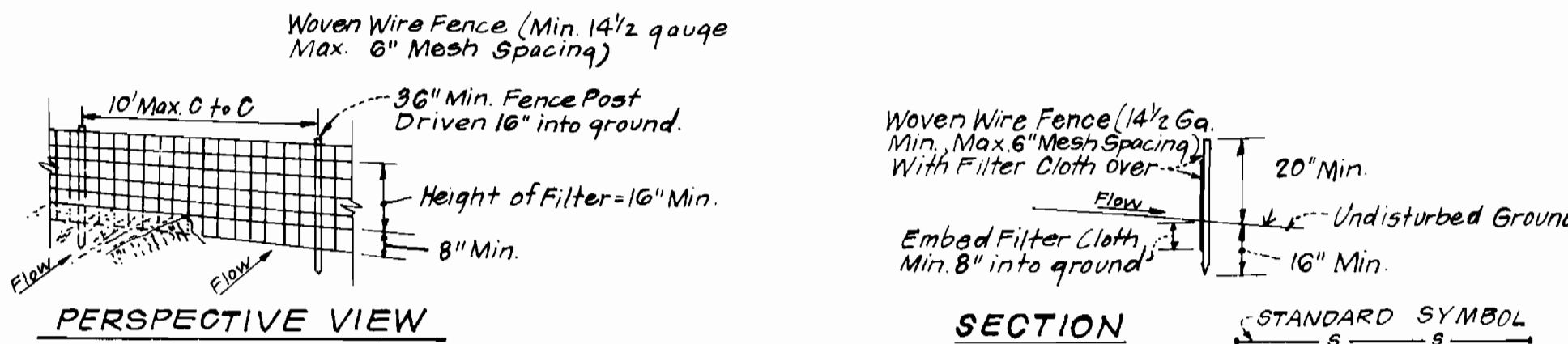
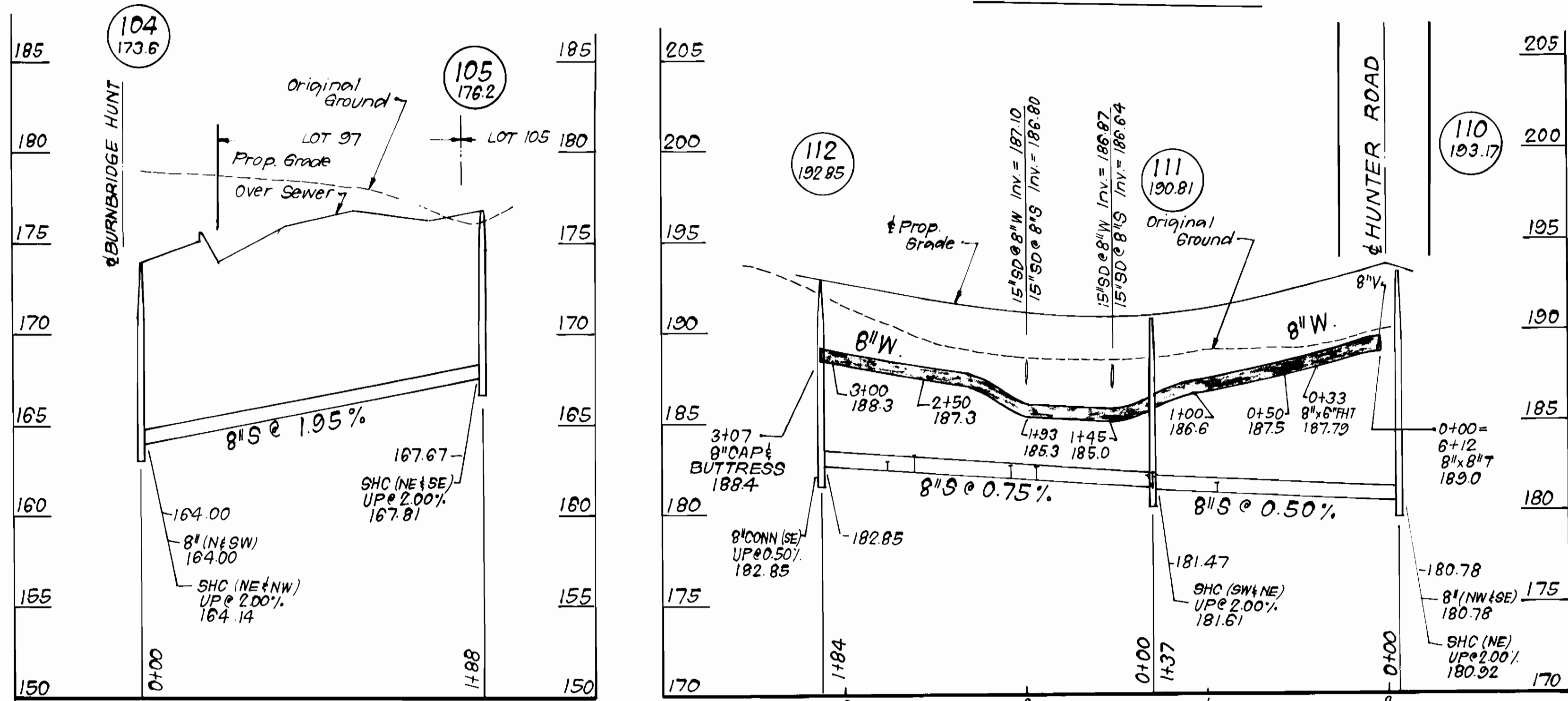
600' SCALE MAP NO. 38 BLOCK NO.

HUNT CLUB ESTATES
 LOTS 77 THRU 148 SECTION 5 AREA 2
 A RESUBDIVISION OF
 LOT 76 SECTION 5 AREA 1
 1ST ELECTION DISTRICT
 CONTRACT NO 14 - 1710-D

SCALE AS SHOWN
 SHEET 2 OF 4

PROFILE SCALE
 Horizontal: 1" = 50'
 Vertical: 1" = 5'

GOSHEN HUNT ROAD

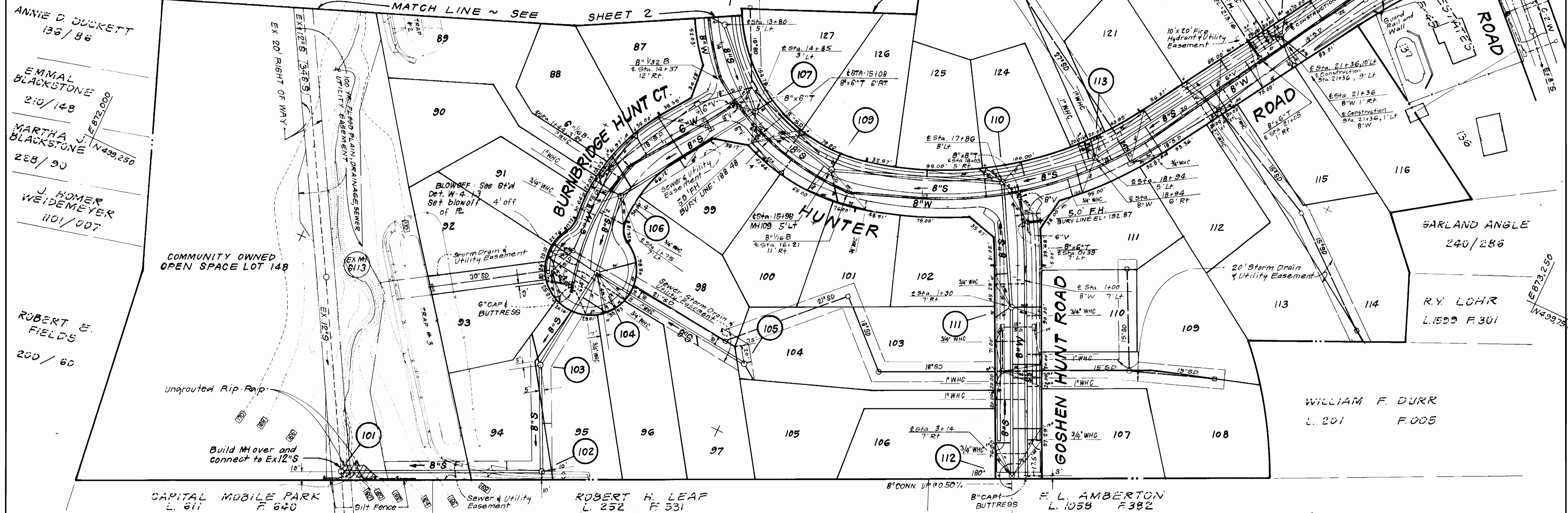


CONSTRUCTION NOTES FOR FABRICATED SILT FENCE

1. Woven Wire Fence to be fastened securely to fence post with wire ties or staples.
2. Filter Cloth to be fastened securely to woven wire fence with ties spaced every 24" at top and Mid-Section.
3. When two sections of filter cloth adjoin each other they shall be overlapped by six inches and folded.
4. Maintenance shall be performed as needed and material removed when "Bulges" develop in the silt fence.

Posts: Steel either T or U type or 2" Hardwood
 Fence: Woven Wire 1 1/2 gauge, 6" Max. Mesh Opening
 Filter Cloth: Filter X, Mirafil 100X, Stablilinka T140 N or approved equal
 Prefabricated Unit: Geofab, Envirofence, or approved equal.

SILT FENCE DETAIL
 NO SCALE



DEPARTMENT OF PUBLIC WORKS
 HOWARD COUNTY, MARYLAND

Director of Public Works: [Signature] DATE: 4/24/89
 Chief, Bureau of Engineering: [Signature] DATE: 4/13/89
 Chief, Bureau of Utilities: [Signature] DATE: 4/21/89
 Chief, Land Development Div.: [Signature] DATE: 4/13/89

CFB CLARK - FINEPROCK & SACKETT, INC.
 ENGINEERS - PLANNERS - SURVEYORS
 7135 MINSTREL WAY COLUMBIA MARYLAND 21045
 (301) 381-7500 BALTO. (301) 621-8100 WASH.

DES: J.T.R.
 DRN: V.L.M.
 CHK: J.T.R.
 DATE: 9/88

REVISION	DATE

PLAN & PROFILES OF
 WATER & SEWER MAINS

600' SCALE MAP NO. 32 BLOCK NO. _____

HUNT CLUB ESTATES
 LOTS 77 THRU 148 SECTION 5 AREA 2
 A RESUBDIVISION OF
 LOT 76 SECTION 5 AREA 1
 1ST ELECTION DISTRICT
 CONTRACT NO. 14-1710-D

SCALE
 AS SHOWN

SHEET
 3 OF 4

