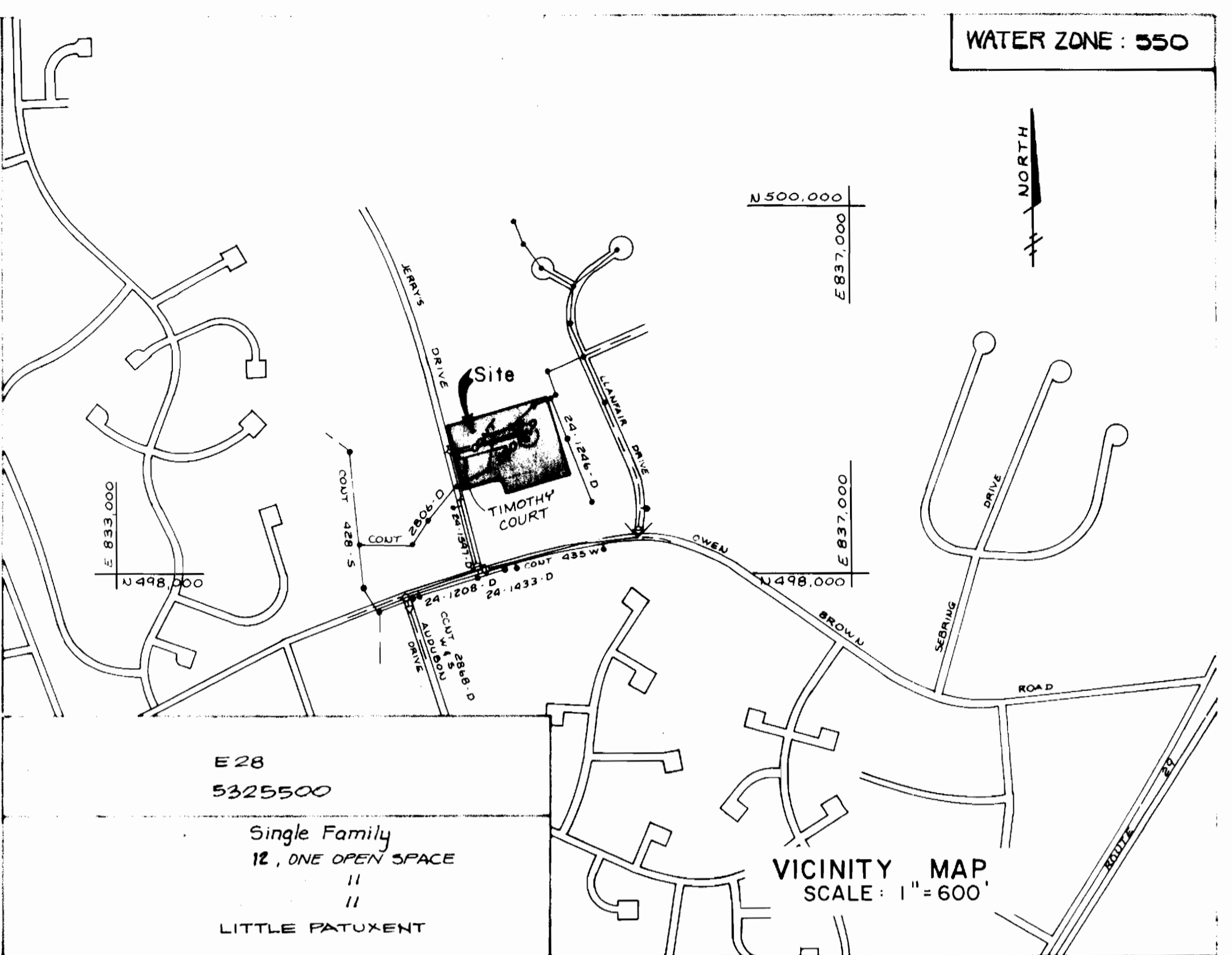


W. LINE STA.	E. OFFSET
3+10	7' LEFT
3+15	7.5' LEFT
3+20	8' LEFT
3+25	9' LEFT
3+30	10' LEFT
3+35	11.5' LEFT
3+40	12' LEFT
3+45	12.5' LEFT
3+50 THRU 3+75	13' LEFT
3+80	12.5' LEFT
3+85	12' LEFT
3+90	11' LEFT
3+95	9.5' LEFT
4+00	8.5' LEFT
4+05	7' LEFT

- BENCHMARKS:**
- KIDDE BM # B-1 ELEV. = 374.25
REAR 8" CAP & BUTTRESS SPIKE IN WEST SIDE OF POLE # 240882. LOCATED @ THE INTERSECTION OF W. OF W. PROPERTY CORNER WITH WESTERN PROPERTY CORNER.
 - KIDDE BM # B-2 ELEV. = 389.43
SAN. SEWER MANHOLE, 18" SOUTH OF THE NORTHERN MOST PROPERTY CORNER.
- Abandonment procedure for septic tank
1. Pump the tank out
 2. Remove all the pipes
 3. Crash the tank
 4. Fill the area with clean soil

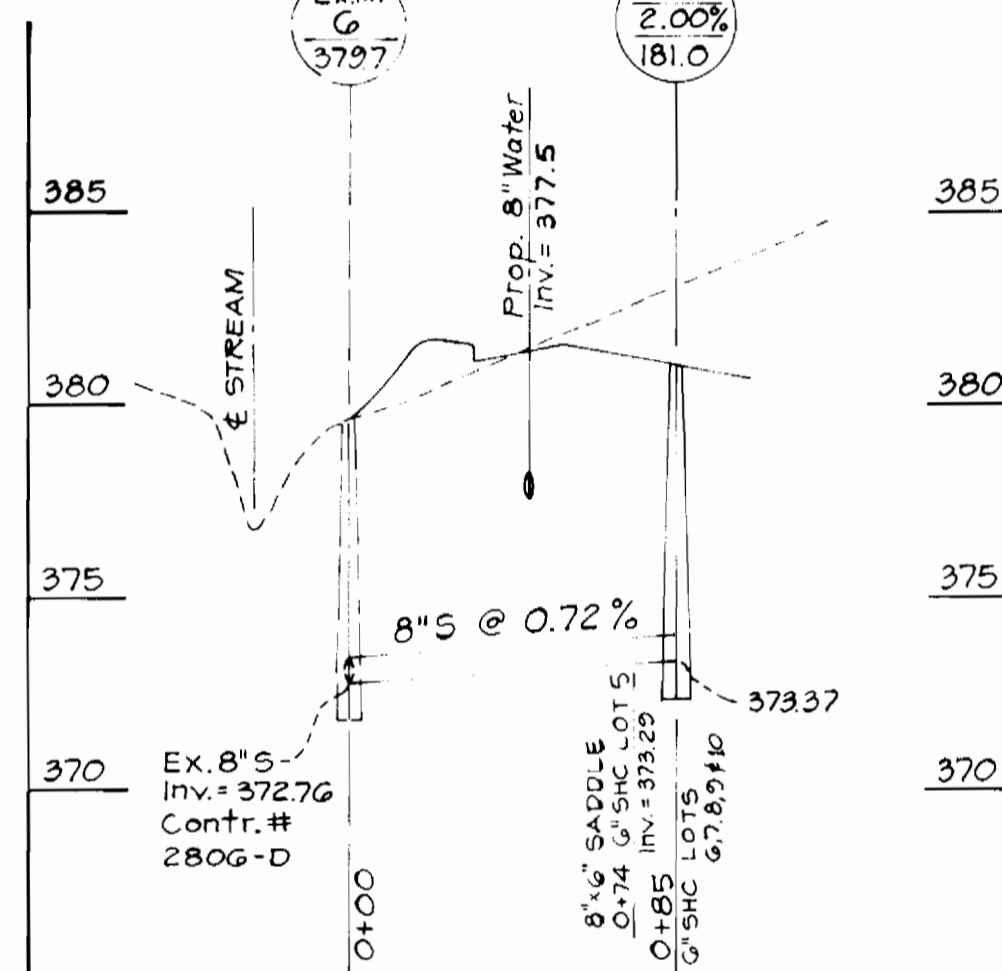


WATER HOUSE CONNECTIONS

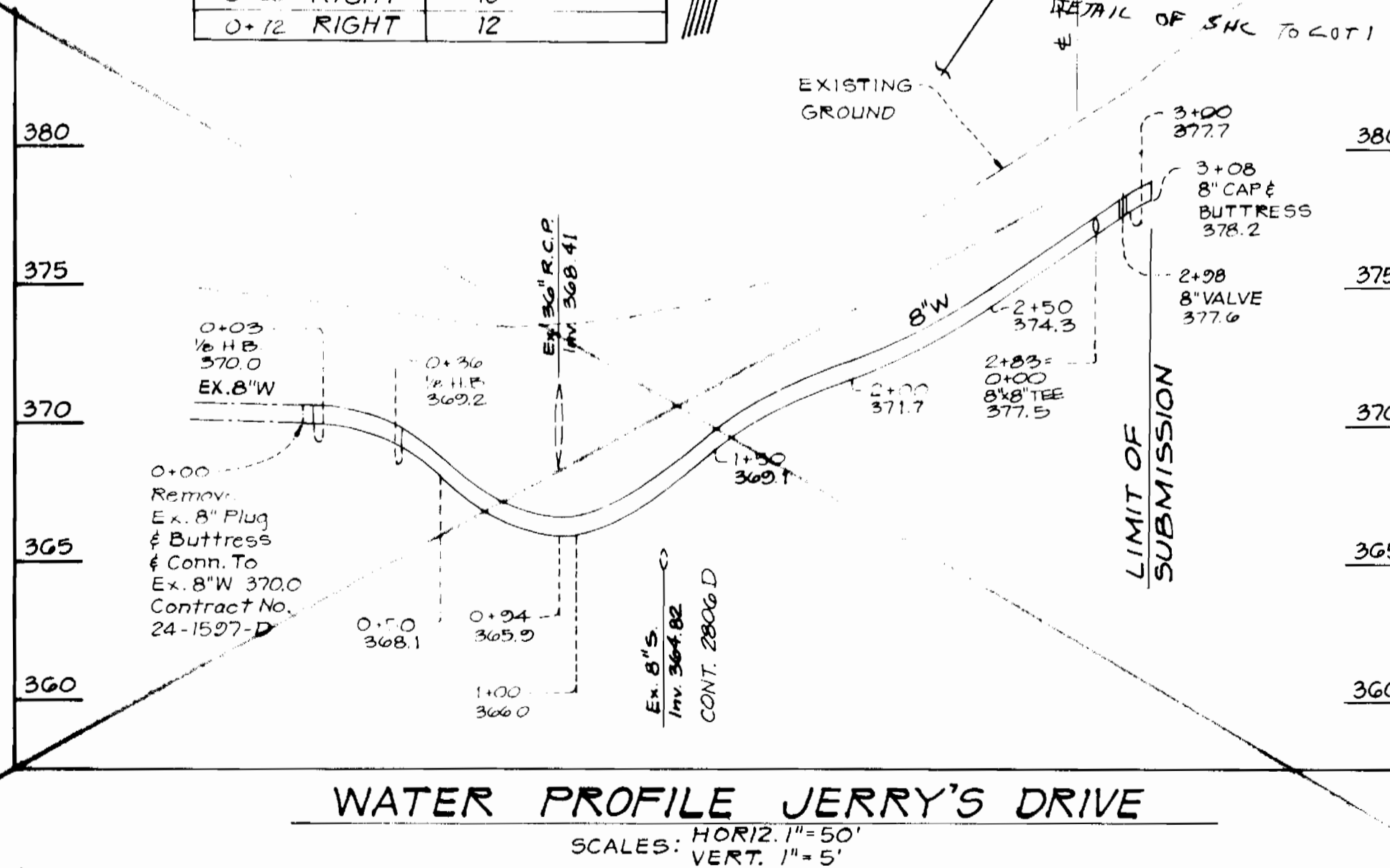
STATIONS	LOT
1+71 LEFT	1
1+71 LEFT	2
3+48 LEFT	3
4+32 LEFT	4
4+36 LEFT	5
4+39 RIGHT	6
4+35 RIGHT	7
4+35 RIGHT	8
3+90 RIGHT	9
3+90 RIGHT	10
0+12 RIGHT	12

QUANTITIES

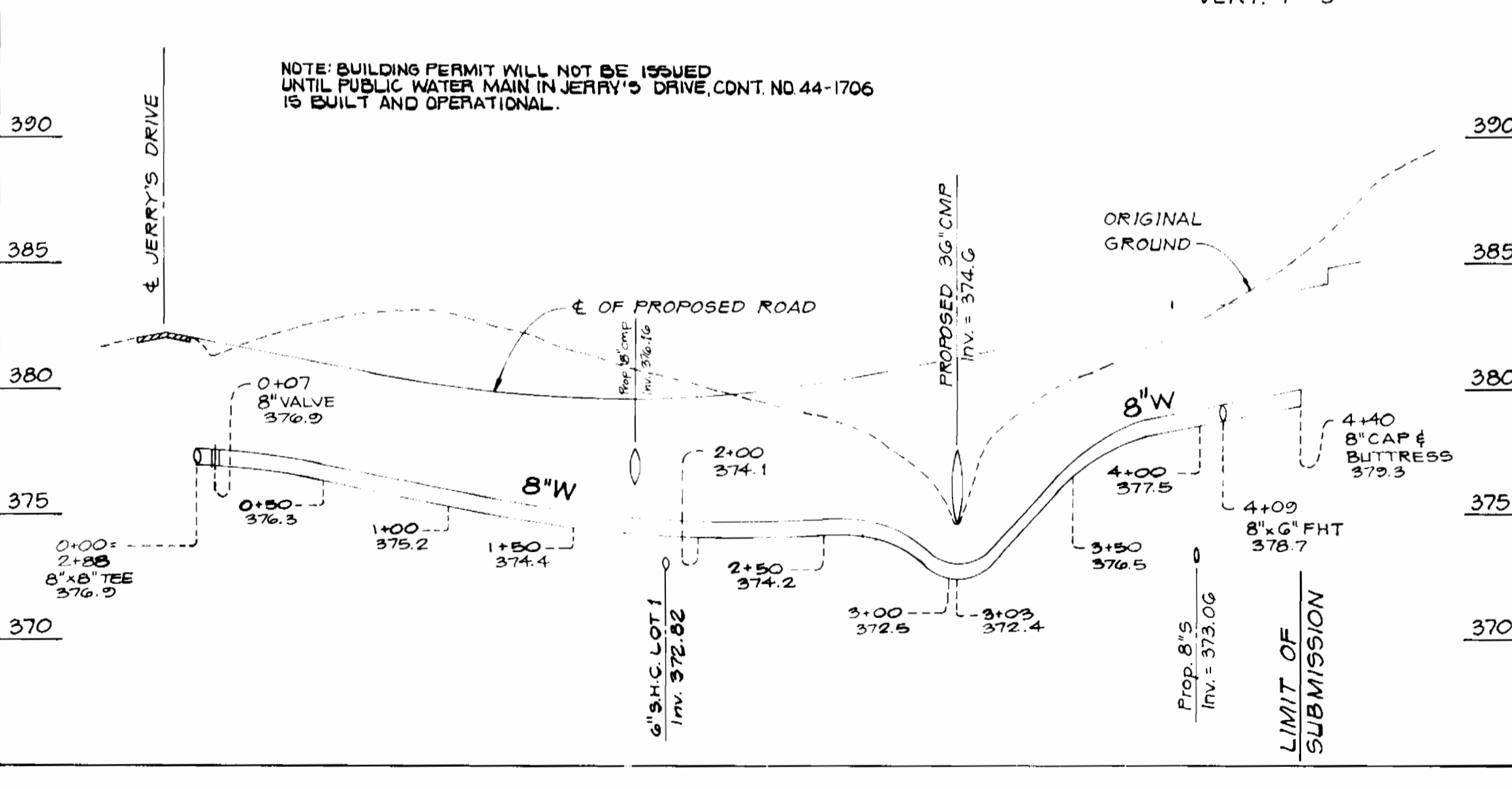
ITEM	DESIGN	AS-BUILT	MAT'L/SUPPLIER
8" SEWER	85 LF	83 LF	J.M. INTL
6" SHC	30 LF	30 LF	J.M. INTL
MANHOLES	1	1	CONCRETE PRODUCTS
8" SADDLES	4	3	ROMAC INTL
8" WATER	440 LF	430 LF	GRUBBIN PIPE
FIRE HYDRANTS	1	1	MILLER CO.
1" WHC	180 LF	152 LF	HOWELL METALS
3/4" WHC	61 LF	139 LF	HOWELL METALS
8" VALVES	2	0	MULLER CO.
6" FH VALVES	1	1	MULLER CO.



SEWER PROFILE
SCALES: HORIZ. 1"=50'
VERT. 1"=5'



WATER PROFILE JERRY'S DRIVE
SCALES: HORIZ. 1"=50'
VERT. 1"=5'



WATER PROFILE TIMOTHY COURT
SCALES: HORIZ. 1"=50'
VERT. 1"=5'

FINAL PLAN NUMBER F-88-62
J. Helm / 2 1/27/88
DATE

FINAL PLAN NUMBER F-88-62
Stephen L. Helm 1/27/88
DATE

KIDDE CONSULTANTS INC.
ENGINEERS, PLANNERS & SURVEYORS



DES: MK
DRN: SK
CHK: RA/DW
DATE: 7/87

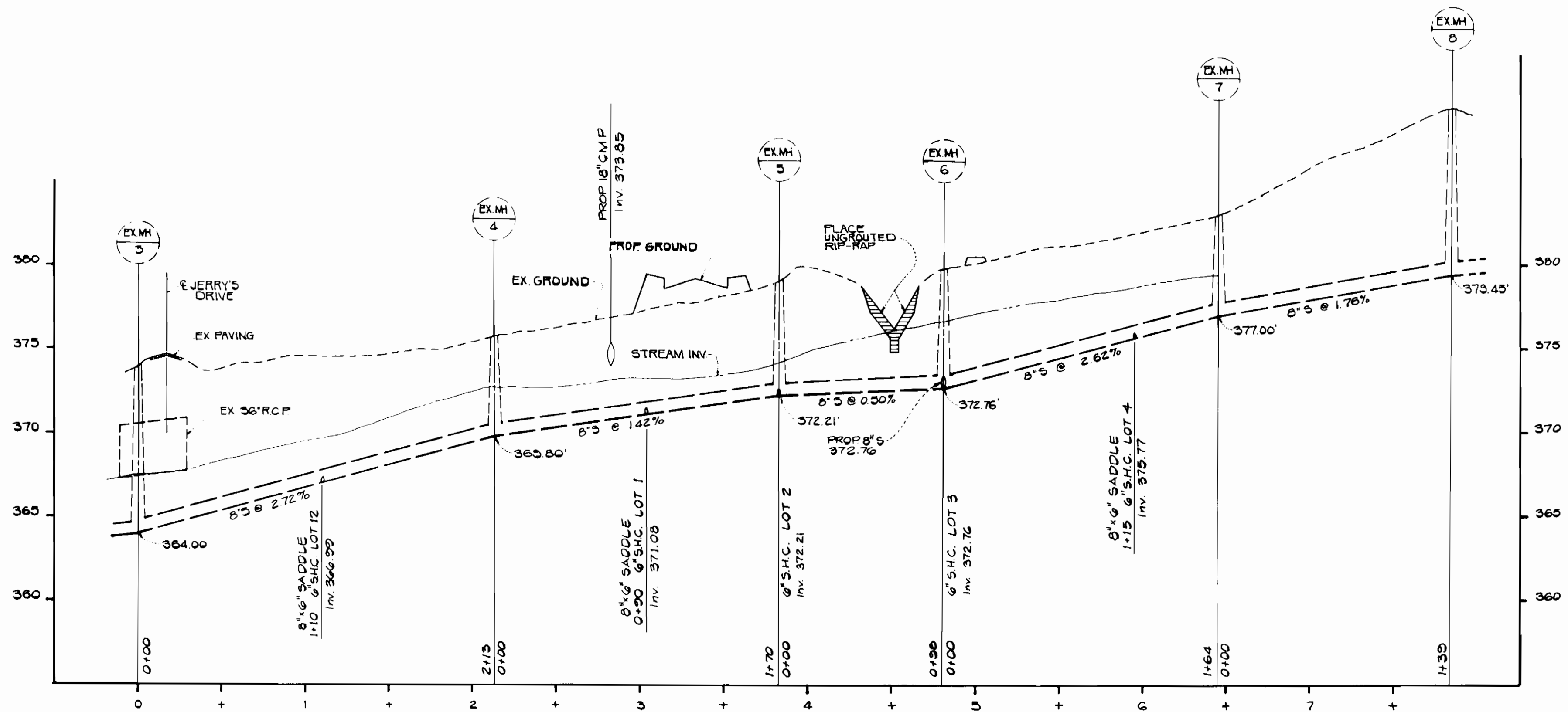
**WATER & SEWER
PLAN & PROFILE**

(CONTRACT 24-1698-D)
LOTS 1 THRU 12
HICKORY WOODS
TAX MAP 35 PARCEL 179
5TH ELECTION DIST. HOWARD COUNTY MD
A RESUBDIVISION OF LOT 6 "EDWARD BASSLER SUBDIVISION,
NOS. 2", AND LOTS 4, 5 AND PART OF LOTS 2, 3 "EDWIN BASSLER PROPERTY"
CONTRACT 24-1698-D

6-21-88 AS-BUILT

SEWER HOUSE CONNECTIONS
INVERT ELEV. 'S @ R/W LINES

LOT NUMBER	CONNECTION LOCATIONS	STATION	LENGTH FT.	INVERT R/W	INVERT CONNECTOR
1	EX. MH4 TO EX. MH5	0+90 LEFT	96	372.8	371.08
2	EX. MH5	1+72 LEFT	9	372.39	372.21
3	EX. MH5	0+98 LEFT	10	372.96	372.76
4	EX. MH6 TO EX. MH7	1+12 RIGHT	9	375.95	375.77
5	PROP. MM TO EX. MH7	0+74	71	374.71	373.29
6	PROPOSED MH1	0+85	56	374.47	373.37
7	PROPOSED MH1	0+85	56	374.47	373.37
8	PROPOSED MH1	0+85	25	373.87	373.37
9	PROPOSED MH1	0+85	25	373.87	373.37
10	PROPOSED MH1	0+85	21	373.79	373.37
12	EX. MH5 TO EX. MH4	1+10 LEFT	9	367.17	366.99



PROFILE - OUTFALL
SCALE: HORIZ. 1" = 50'
VERT. 1" = 5'
EXISTING SEWER - CONT. NO. 2806-D

REVIEWED BY: J. Hehn / E
DATE: 1-27-88
FINAL PLAN NUMBER F-88-62

DEPARTMENT OF PUBLIC WORKS
CHIEF, BUREAU OF UTILITIES

DESIGNED BY: Stephen L. Hehn
DATE: 1/27/88
FINAL PLAN NUMBER F-88-62

KIDDE CONSULTANTS INC.
ENGINEERS, PLANNERS & SURVEYORS
JOHN E.C. PATMORE - M.L.P.E. No. 8978

WATER & SEWER
PLAN & PROFILE
CONTRACT No. 24-1698-D
35

HICKORY WOODS
LOTS 1 THRU 12 (CONTRACT 24-1698-D)
TAX MAP 35 PARCEL 179
5TH ELEC. DIST. HOWARD CO. MD.
A RESUBDIVISION OF LOT 6 "EDWARD BASSLER SUBDIVISION" NOS. 2,
AND OF LOTS 4, 5 AND PART OF LOTS 2 & 3 "EDWIN BASSLER" PROPERTY