

VICINITY MAP
 GENERAL NOTES

- APPROXIMATE LOCATION OF EXISTING MAINS ARE SHOWN. THE CONTRACTOR SHALL TAKE ALL NECESSARY PRECAUTIONS TO PROTECT EXISTING MAINS AND SERVICES AND MAINTAIN UNINTERRUPTED SUPPLY. ANY DAMAGE INCURRED SHALL BE REPAIRED IMMEDIATELY TO THE SATISFACTION OF THE ENGINEER AT THE CONTRACTOR'S EXPENSE.
- ALL HORIZONTAL CONTROLS ARE BASED ON MARYLAND STATE COORDINATES.
- ALL VERTICAL CONTROLS ARE BASED ON U.S.G.C. DATA.
- ALL PIPE ELEVATIONS SHOWN ARE INVERT ELEVATIONS.
- CLEAR ALL UTILITIES BY A MINIMUM OF 6". CLEAR ALL POLES BY 2'-0" MINIMUM OR TURNED AS REQUIRED. THE OWNER HAS CONTACTED THE UTILITY COMPANIES AND HAS MADE ARRANGEMENTS FOR BRACING OF POLES AS SHOWN ON THE DRAWINGS. IN THE EVENT THE CONTRACTOR'S WORK REQUIRES THE BRACING OF ADDITIONAL POLES, ANY COST INCURRED BY THE OWNER FOR THE BRACING OF ADDITIONAL POLES OR DAMAGES SHALL BE DEBITED FROM MONEY PAID TO THE CONTRACTOR. THE CONTRACTOR SHALL COORDINATE WITH THE UTILITY COMPANIES TO SCHEDULE THE BRACING OF THE POLES.
- FOR DETAILS NOT SHOWN ON THE DRAWINGS, AND FOR MATERIALS AND CONSTRUCTION METHODS, USE HOWARD COUNTY DESIGN MANUAL, VOLUME IV, STANDARD SPECIFICATIONS AND DETAILS FOR CONSTRUCTION. THE CONTRACTOR SHALL HAVE A COPY OF VOLUME IV ON THE JOB.
- WHERE TEST PITS HAVE BEEN MADE ON EXISTING UTILITIES, THEY ARE NOTED BY THE SYMBOL AT THE LOCATION OF THE TEST PIT. A NOTE OR NOTES CONTAINING THE RESULTS OF THE TEST PIT OR PITS IS INCLUDED IN THE DRAWING. EXISTING UTILITIES IN THE VICINITY OF THE PROPOSED WORK FOR WHICH TEST PITS HAVE NOT BEEN DUG SHALL BE LOCATED BY THE CONTRACTOR TWO WEEKS IN ADVANCE OF CONSTRUCTION OPERATIONS AT HIS OWN EXPENSE.
- CONTRACTOR SHALL NOTIFY THE FOLLOWING UTILITIES OR AGENCIES AT LEAST FIVE WORKING DAYS BEFORE STARTING WORK SHOWN ON THESE PLANS:
 - STATE HIGHWAY ADMINISTRATION - 531-4534
 - BALTIMORE GAS & ELECTRIC CO., CONTRACT SERVICES - 333-4100
 - BALTIMORE GAS & ELECTRIC CO., UNDERGROUND DAMAGE CONTROL - 333-4100
 - BALTIMORE GAS & ELECTRIC CO., TROUBLE SHOOTING - 333-4100
 - MISS. UTILITY - 333-4100
 - COLONIAL PIPELINE CO. - 796-1390
 - BUREAU OF UTILITIES, HOWARD COUNTY DEPARTMENT OF PUBLIC WORKS - 480-1864
- TREES ARE TO BE PROTECTED FROM DAMAGE TO MAXIMUM EXTENT. TREES LOCATED WITHIN THE CONSTRUCTION STRIP ARE NOT TO BE REMOVED OR DAMAGED BY THE CONTRACTOR.
- CONTRACTOR SHALL REMOVE TREES, STUMPS AND ROOTS ALONG LINE OF EXCAVATION AS DIRECTED BY THE ENGINEER. PAYMENT FOR SUCH REMOVAL SHALL BE INCLUDED IN THE UNIT PRICE BID FOR EXCAVATION AND BACKFILL.
- PLACE REGULATION "MEN WORKING" AND WARNING SIGNS AS REQUIRED TO COMPLY WITH MARYLAND STATE HIGHWAY ADMINISTRATION MANUAL OF TRAFFIC CONTROL FOR HIGHWAY CONSTRUCTION AND MAINTENANCE OPERATIONS.
- ALL WATER MAINS TO BE D.I.P. UNLESS OTHERWISE NOTED.
- TOP OF ALL WATER MAINS TO HAVE A MINIMUM OF 4' COVER UNLESS OTHERWISE NOTED.
- VALVES ADJACENT TO TIES SHALL BE STRAPPED TO TIES.
- GRACE ALL FITTINGS WITH CHROME PLATE.
- PIPE LINE ELEVATIONS ON PIPE HYDRANTS SHALL BE SET BY THE ELEVATIONS SHOWN ON THE DRAWINGS. ALL PIPE HYDRANTS SHALL BE STRAPPED AND BRIDGED WITH CONCRETE IN ACCORDANCE WITH STANDARD DETAILS. SET AROUND THE PIPE HYDRANT TO BE COMPACTED TO ACCORDANCE WITH SECTIONS 1801 AND 1802 OF THE GENERAL REQUIREMENTS FOR WATER AND SEWER.
- ALL WATER HOUSE CONNECTIONS SHALL BE FOR AN INSIDE REEF SETTING.
- THE CONTRACTOR SHALL NOT OPERATE ANY WATER MAIN VALVES ON THE EXISTING SYSTEM.
- FOR ALL COPPER WATER HOUSE CONNECTIONS UTILIZE FLARED TYPE FITTINGS ONLY.
- THE SERVICE CLAMP ARE TO HAVE STAINLESS STEEL STRAPS.
- ALL SEWER MAINS SHALL BE C.S.P.X., V.C.P.X., P.V.C. OR A.C.P. CLASS 2400 UNLESS OTHERWISE NOTED.
- THE CONTRACTOR SHALL PROVIDE A JOINT IN ALL SEWER MAINS WITHIN 2'-0" OF EXTERIOR MIDDLE WALL.
- ALL MANHOLES SHALL BE 4'-0" INSIDE DIAMETER UNLESS OTHERWISE NOTED.
- MANHOLES SHALL BE 12" AND 16" WALLS ARE BRICK MANHOLES ONLY.
- MANHOLES DESIGNATED W.T. IN PLAN AND PROFILE SHALL HAVE WATER TIGHT FRAME AND COVER. STANDARD DETAIL SHALL APPLY UNLESS OTHERWISE NOTED.
- WHERE WATER TIGHT MANHOLES FRAME AND COVER IS USED, SET TOP OF FRAME 1'-0" ABOVE FINISHED GRADE.
- HOUSE(S) WITH THE SYMBOL INDICATES THE CLEARANCE SHOULD BE MAINTAINED.
- ALL WATER HOUSE CONNECTIONS SHALL HAVE A MINIMUM VERTICAL CLEARANCE OF 1'-0" ABOVE ALL SANITARY SEWER CONNECTIONS.
- ALL SANITARY SEWER HOUSE CONNECTIONS SHALL HAVE A MINIMUM VERTICAL CLEARANCE OF 1'-0" BELOW ALL WATER MAIN CONNECTIONS.
- PROFILE STATINGS SHALL BE ADJUSTED AS NECESSARY TO CONFORM TO PLAN DIMENSIONS.
- NO PIPE SHALL BE LAID UNTIL LINES OF EXCAVATION HAVE BEEN BROUGHT TO SUBGRADE.

QUANTITIES

ITEM	QUANTITY	AS-BUILT	SUPPLIER
6" SEWER	1829 LF	2147	M.P. CONCRETE
6" SHC	889 LF	605	"
12" MANHOLE	126 V.F.	127	ATLANTIC PRECAST
PIPE HYDRANTS	4 EA	4	M.P. WATER & SEWER
6" WATER	516 LF	582	"
6" WATER	602 LF	600	"
1" WHC	307 LF	366	"
3/4" WHC	303 LF	551	"
6" VALVES	1 EA	1	"
2" VALVES	2 EA	0	"

HOWARD SOIL CONSERVATION DISTRICT REVIEWED FOR HOWARD SOIL CONSERVATION DISTRICT AND MEETS TECHNICAL REQUIREMENTS.
 9-29-87
 U.S. SOIL CONSERVATION SERVICE DATE

THIS PLAN IS APPROVED FOR SOIL EROSION AND SEDIMENT CONTROL BY THE HOWARD SOIL CONSERVATION DISTRICT.
 9/29/87
 HOWARD SOIL CONSERVATION DISTRICT DATE

SEDIMENT CONTROL MEASURED FOR THIS CONTRACT WILL BE IMPLEMENTED IN ACCORDANCE WITH SECTION 217 OF THE HOWARD COUNTY STANDARD SPECIFICATIONS AND AS PER ROAD CONSTRUCTION PLANS 87-102

DEPARTMENT OF PUBLIC WORKS
 HOWARD COUNTY, MARYLAND

Richard B. ... 10-2-87
 DIRECTOR OF PUBLIC WORKS DATE

Michael A. ... 10-1-87
 CHIEF, BUREAU OF UTILITIES DATE

Tracy Schulte 10-1-87
 CHIEF, LAND DEVELOPMENT DIVISION DATE

TRACY, SCHULTE & ASSOCIATES INC.
 planning architecture engineering
 8480 Baltimore National Pike Suite 418
 Ellicott City, Maryland 21043

STATE OF MARYLAND
 PROFESSIONAL ENGINEER

DE: JLR
 DRN: JCA
 CHK: RJW
 DATE: 5-1-87

JLK
 CDT
 JLK
 CN

Change 1 Blower
 Corrections to sewer between Manholes 207 & 210
 Remove 12" manhole and 12" fire hydrant

AS-BUILT
 AS-BUILT

11-24-87
 2-9-88
 4-15-88
 7-1-88

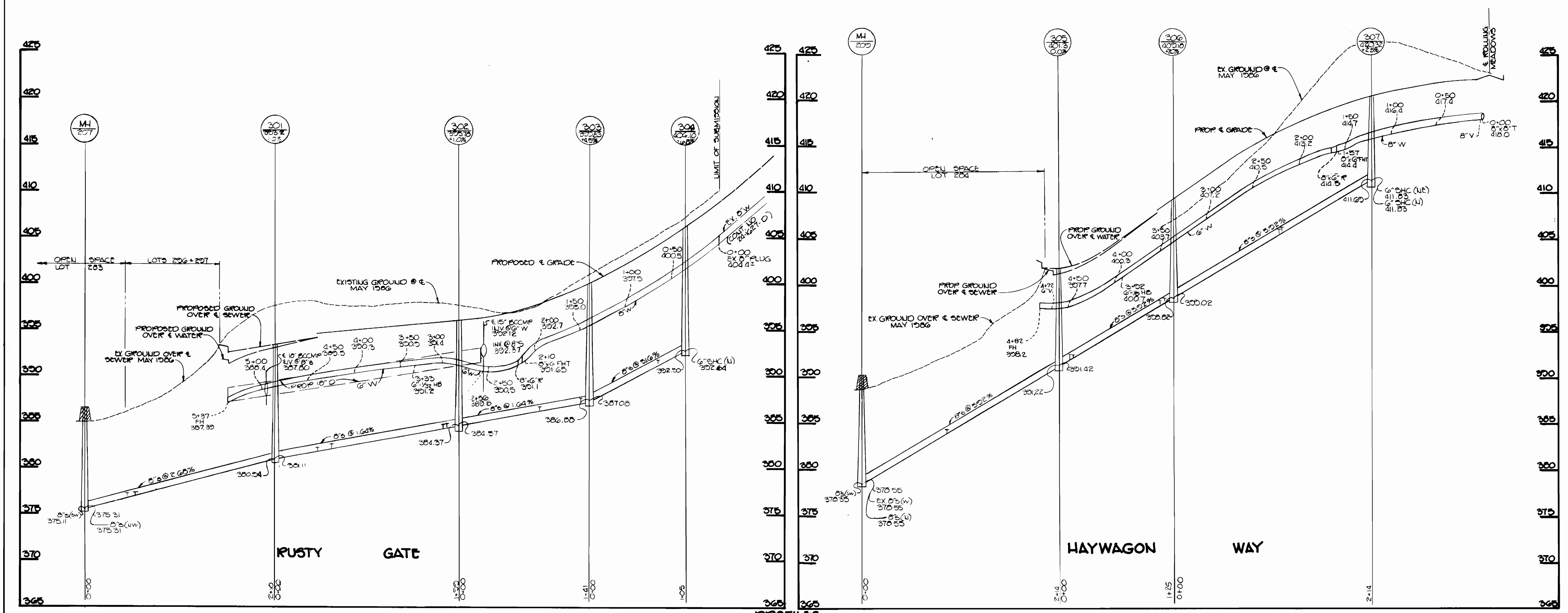
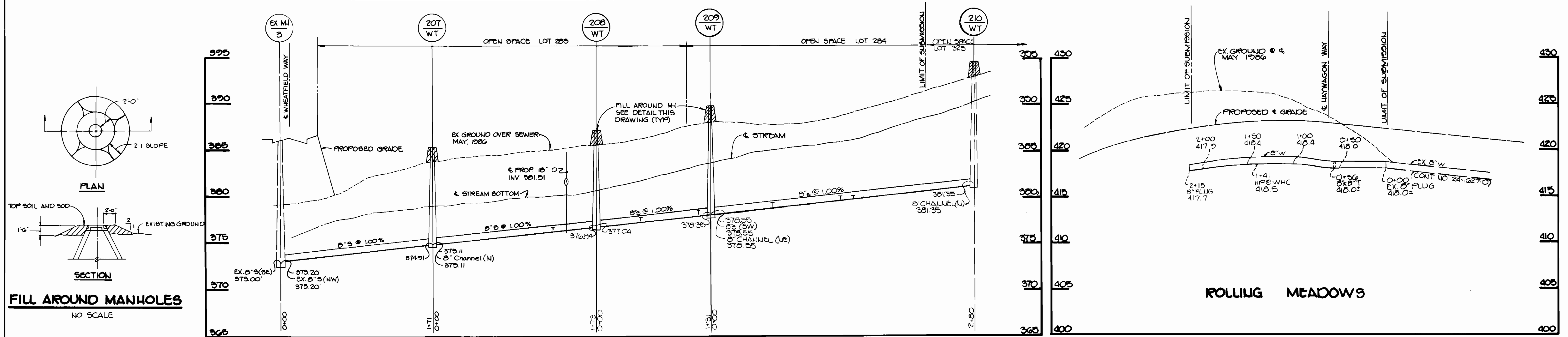
BY: NO.
 REVISION
 DATE

PLAN OF WATER AND SEWER MAINS

LONG GATE SECTION 2, AREA 3
 ELECTION DISTRICT NO. 2
 CONTRACT NO. 24-1696-D

60' SCALE MAP NO. 30
 BLOCK NO. 6

SCALE AS SHOWN
 SHEET 1 OF 2



DEPARTMENT OF PUBLIC WORKS HOWARD COUNTY, MARYLAND Director of Public Works: JMI 10-2-87 Chief, Bureau of Engineering: [Signature] 10-1-87 Chief, Bureau of Utilities: [Signature] 10-1-87		TRACY, SCHULTE & ASSOCIATES INC. planning architecture engineering 8480 Baltimore National Pike Suite 418 Ellicott City, Maryland 21043 State of Maryland Professional Engineer Seal		DES: JLR DRN: JCA CHK: RJW DATE: 5-1-87		JLR CDT JLR AS-BUILT		Changed blow-off sizes to 3" Corrections on Manholes Removed Blow-offs and added fire hydrants 11-8-87 2-9-87 4-15-88		PROFILES OF WATER AND SEWER MAINS LONG GATE SECTION 2, AREA 3 ELECTION DISTRICT 2 CONTRACT NO.		SCALE AS SHOWN SHEET 2 OF 2
--	--	--	--	--	--	-------------------------------	--	--	--	--	--	--------------------------------

AS-BUILT 7-1-88