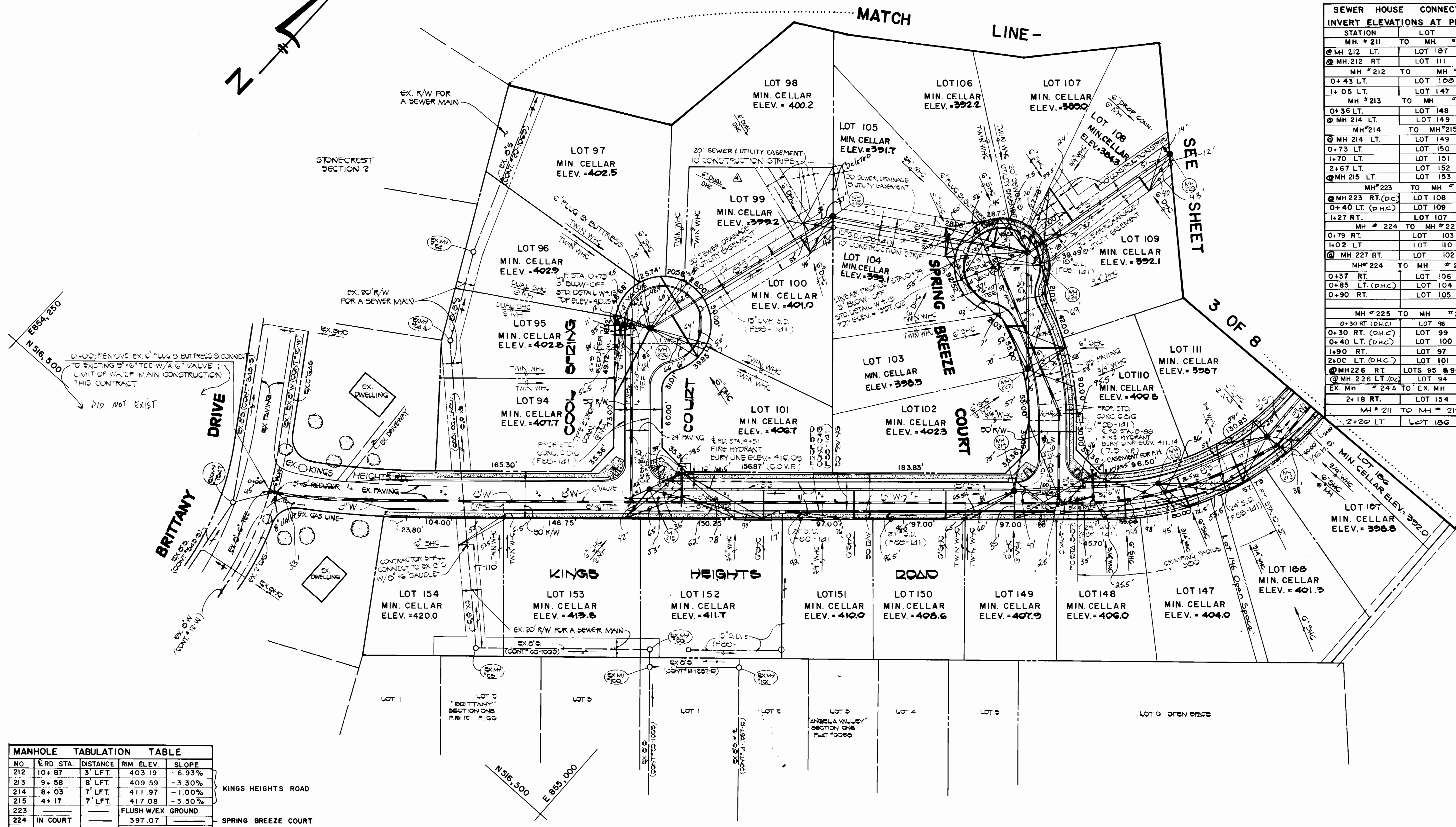


E 855,000 N 517,750



SEWER HOUSE CONNECTIONS		
INVERT ELEVATIONS AT PROPERTY LINE		
STATION	LOT	ELEVATION
MH # 211 TO MH # 212		
0+212 LT.	LOT 187	393.27
0+212 RT.	LOT 111	393.13
MH # 212 TO MH # 213		
0+43 LT.	LOT 108	395.58
1+05 LT.	LOT 147	398.90
MH # 213 TO MH # 214		
0+36 LT.	LOT 148	400.55
0+214 LT.	LOT 149	402.30
MH # 214 TO MH # 215		
0+214 LT.	LOT 149	402.30
0+73 LT.	LOT 150	403.20
1+70 LT.	LOT 151	404.52
2+67 LT.	LOT 152	405.64
0+215 LT.	LOT 153	407.74
MH # 223 TO MH # 224		
0+223 RT. (D.C.)	LOT 108	379.31
0+40 LT. (D.H.C.)	LOT 109	366.40
1+27 RT.	LOT 107	363.69
MH # 224 TO MH # 227		
0+79 RT.	LOT 103	392.89
1+02 LT.	LOT 110	395.51
0+227 RT.	LOT 102	397.20
MH # 224 TO MH # 225		
0+37 RT.	LOT 106	365.23
0+85 LT. (D.H.C.)	LOT 104	363.20
0+90 RT.	LOT 105	366.65
MH # 225 TO MH # 226		
0+30 RT. (D.H.C.)	LOT 98	395.60
0+30 RT. (D.H.C.)	LOT 99	394.20
0+40 LT. (D.H.C.)	LOT 100	395.40
1+80 RT.	LOT 97	396.54
2+00 LT. (D.H.C.)	LOT 101	401.06
0+226 RT.	LOTS 95 & 96	397.90
0+226 LT. (D.C.)	LOT 94	402.66
EX. MH # 24 A TO EX. MH # 25		
2+18 RT.	LOT 154	415.06
MH # 211 TO MH # 212		
2+20 LT.	LOT 186	396.83

MANHOLE TABULATION TABLE				
NO.	RD. STA.	DISTANCE	RIM ELEV.	SLOPE
212	10+87	3' LFT.	403.19	-6.93%
213	9+58	8' LFT.	409.59	-3.30%
214	8+03	7' LFT.	411.97	-1.00%
215	4+17	7' LFT.	417.08	-3.50%
223			FLUSH W/EX GROUND	
224	IN COURT		397.07	
225			FLUSH W/EX GROUND	
226	IN COURT		409.66	
227	1+42	20' LFT.	405.13	-6.30%

SEE SHEET 5 FOR PROFILES IN KINGS HEIGHTS ROAD
 SEE SHEET 6 FOR PROFILES IN SPRING BREEZE COURT
 SEE SHEET 6 FOR PROFILES IN COOL SPRING COURT (6" W)
 SEE SHEET 9 FOR PROFILES OF 8" S/MH#223 TO MH#226

CONTRACT NO. 14-1692-D
 AUTUMN MANOR
 SECTION I AREA 2
 WATER AND SEWER EXTENSIONS
 HOWARD COUNTY, MARYLAND

DEPARTMENT OF PUBLIC WORKS
 HOWARD COUNTY, MARYLAND
 Director of Public Works: James J. Ryan, 7/26/88
 Chief, Bureau of Engineering: William J. Ryan, 7/28/88
 Chief, Bureau of Utilities: Ralph Bruning, 7/19/88
 Chief, Land Development Division: Paul J. Bloom, 4/25/88

FISHER, COLLINS, AND CARTER, INC.
 CONSULTING ENGINEERS AND LAND SURVEYORS
 8388 COURT AVENUE
 ELLICOTT CITY, MARYLAND 21043
 State of Maryland Professional Engineer Seal: Terrell A. Fisher, No. 9757, Exp. 12/31/90

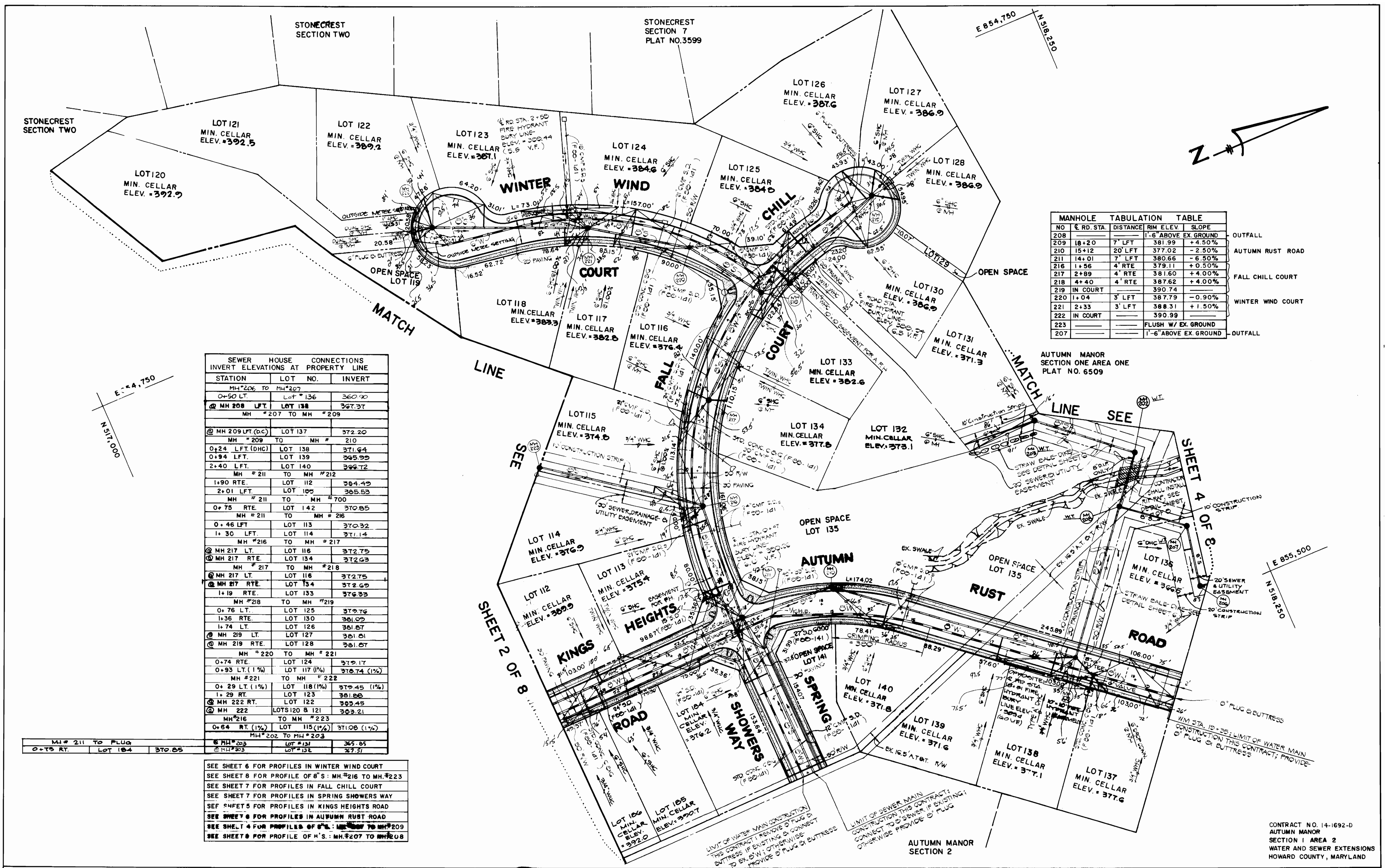
DES:	P.W.K.	DATE:	12/1/77
DRN:	J.O.	BY:	J.O.
CHK:	TAF	DATE:	12/1/77
REVISED:		BY:	
1	S.H.	DATE:	9/27/81
2	G.W.	DATE:	4/6/81
3	S.H.	DATE:	2/1/81
4	G.W.	DATE:	1/30/82

PLAN
 WATER AND SEWER MAINS
 600' SCALE MAP NO. 25 BLOCK NO. _____

AUTUMN MANOR
 SECTION I AREA 2
 CONTRACT NO. 14-1692-D
 SECOND ELECTION DISTRICT
 HOWARD COUNTY, MARYLAND

SCALE AS SHOWN
 SHEET 2 OF 8

3/1/90



MANHOLE TABULATION TABLE				
NO	RD. STA.	DISTANCE	RIM ELEV.	SLOPE
208			1'-6" ABOVE EX. GROUND	
209	18+20	7' LFT	381.99	+4.50%
210	15+12	20' LFT	377.02	-2.50%
211	14+01	7' LFT	380.66	-6.50%
216	1+56	4' RTE	379.11	+0.50%
217	2+89	4' RTE	381.60	+4.00%
218	4+40	4' RTE	387.62	+4.00%
219	IN COURT		390.74	
220	1+04	3' LFT	387.79	-0.90%
221	2+33	3' LFT	388.31	+1.50%
222	IN COURT		390.99	
223			FLUSH W/ EX. GROUND	
207			1'-6" ABOVE EX. GROUND	

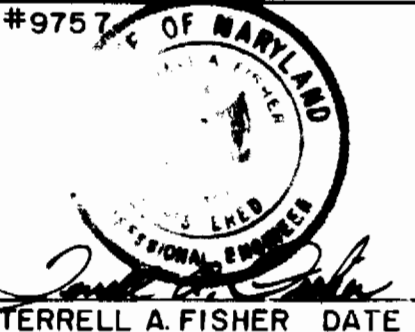
SEWER HOUSE CONNECTIONS INVERT ELEVATIONS AT PROPERTY LINE		
STATION	LOT NO.	INVERT
MH #206 TO MH #207		
0+50 LT.	LOT #136	360.90
MH #208 LFT.	LOT #138	367.37
MH #207 TO MH #209		
MH #209 LFT. (DC)	LOT #137	372.20
MH #209 TO MH #210		
0+24 LFT. (DHC)	LOT #138	371.64
0+94 LFT.	LOT #139	365.99
2+40 LFT.	LOT #140	366.72
MH #211 TO MH #212		
1+90 RTE.	LOT #112	364.49
2+01 LFT.	LOT #109	365.53
MH #211 TO MH #210		
0+75 RTE.	LOT #142	370.85
MH #211 TO MH #216		
0+46 LFT.	LOT #113	370.32
1+30 LFT.	LOT #114	371.14
MH #216 TO MH #217		
MH #217 LT.	LOT #116	372.75
MH #217 RTE.	LOT #134	372.63
MH #217 TO MH #218		
MH #217 LT.	LOT #116	372.75
MH #217 RTE.	LOT #134	372.63
1+19 RTE.	LOT #133	376.33
MH #218 TO MH #219		
0+76 LT.	LOT #125	379.76
1+36 RTE.	LOT #130	381.09
1+74 LT.	LOT #126	381.67
MH #219 LT.	LOT #127	381.61
MH #219 RTE.	LOT #128	381.67
MH #220 TO MH #221		
0+74 RTE.	LOT #124	379.17
0+93 LT. (1%)	LOT #117 (1%)	378.74 (1%)
MH #221 TO MH #222		
0+29 LT. (1%)	LOT #118 (1%)	379.45 (1%)
1+29 RT.	LOT #123	381.66
MH #222 RT.	LOT #122	383.45
MH #222	LOTS #120 & 121	383.21
MH #216 TO MH #223		
0+64 RT. (1%)	LOT #115 (1%)	371.06 (1%)
MH #203 TO MH #204		
MH #203	LOT #131	365.85
MH #204	LOT #132	367.31

SEE SHEET 6 FOR PROFILES IN WINTER WIND COURT
 SEE SHEET 8 FOR PROFILE OF 8" S: MH #216 TO MH #223
 SEE SHEET 7 FOR PROFILES IN FALL CHILL COURT
 SEE SHEET 7 FOR PROFILES IN SPRING SHOWERS WAY
 SEE SHEET 5 FOR PROFILES IN KINGS HEIGHTS ROAD
 SEE SHEET 6 FOR PROFILES IN AUTUMN RUST ROAD
 SEE SHEET 4 FOR PROFILES OF 8" S: MH #207 TO MH #209
 SEE SHEET 9 FOR PROFILE OF 8" S: MH #207 TO MH #208

MH #211 TO FLUSH	LOT #104	370.85
0+75 RT.		

DEPARTMENT OF PUBLIC WORKS
 HOWARD COUNTY, MARYLAND
 DIRECTOR OF PUBLIC WORKS DATE
 CHIEF, BUREAU OF ENGINEERING DATE
 CHIEF, BUREAU OF UTILITIES DATE

FISHER, COLLINS, AND CARTER, INC.
 CONSULTING ENGINEERS AND LAND SURVEYORS
 8388 COURT AVENUE
 ELLICOTT CITY, MARYLAND 21043



DES: PWK			
DRN: J.O.			
CHK: TAF.	G.W.	Revise Lot Lines and SHC Table	4/1/89
	S.H.	Revise SHC chart @ Sewer	2/1/89
	G.W.	Revise SHC chart & Min. Cellar Elevations & Sewer	1/30/89
DATE: 2/10/87	BY: NO.	REVISION	DATE

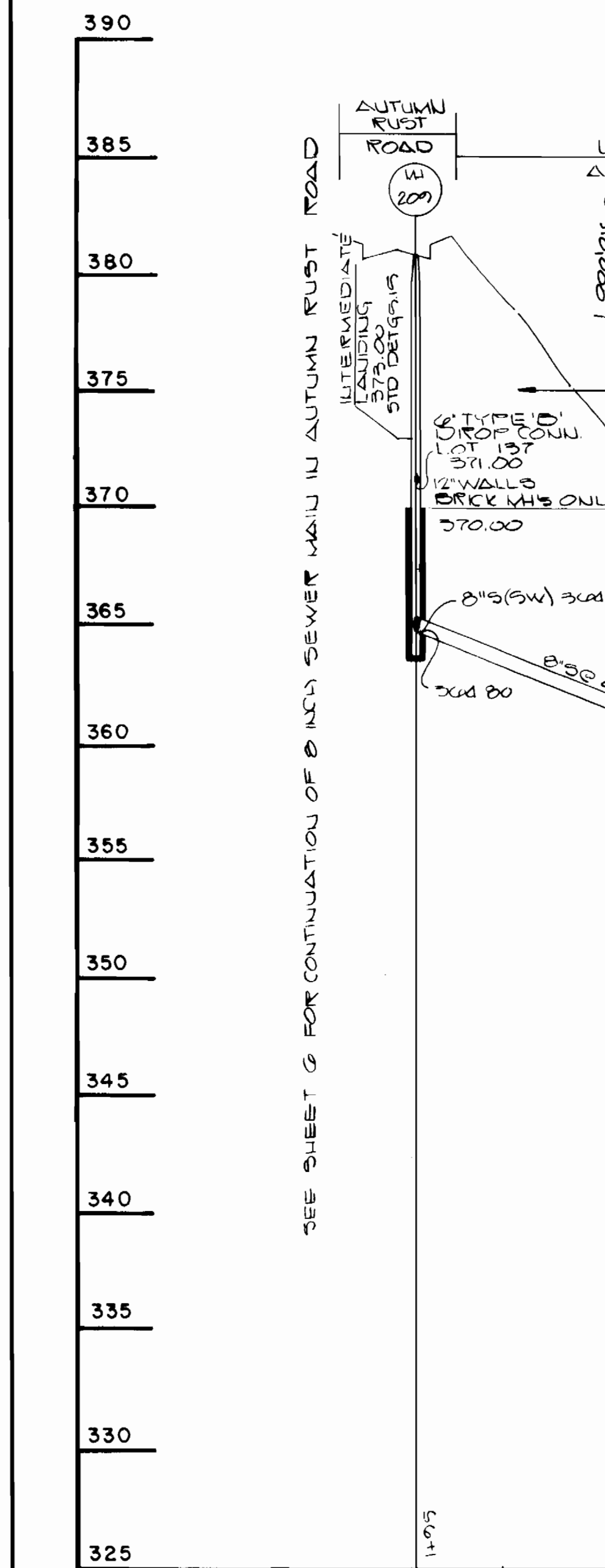
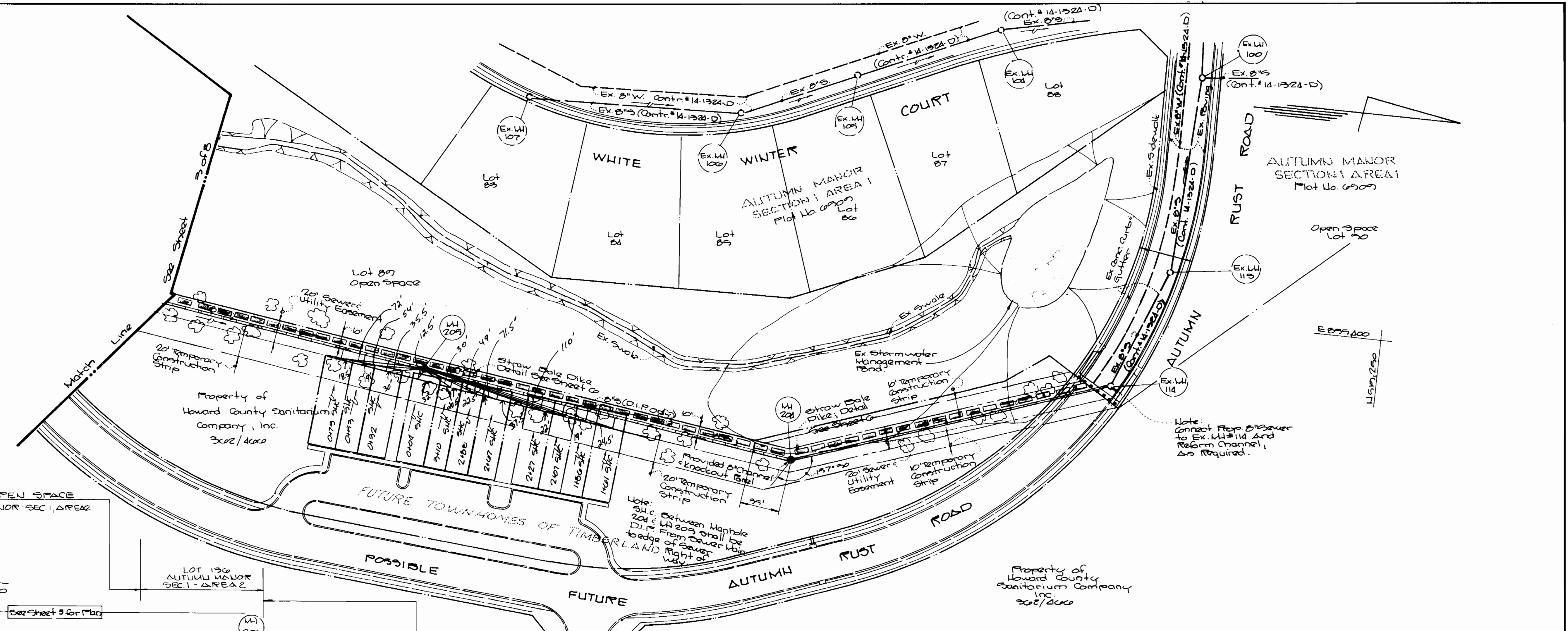
PLAN
 WATER AND SEWER MAINS
 600' SCALE MAP NO. 25 BLOCK NO.

AUTUMN MANOR
 SECTION 1 AREA 2
 CONTRACT NO. 14-1692-D
 SECOND ELECTION DISTRICT
 HOWARD COUNTY, MARYLAND
 SCALE AS SHOWN
 SHEET 3 OF 8

BRUNING 69150

3/1/90

Station	Lot Use	Invert Elevation
1401 H.	Fut Lot	390.01
1402 H.	"	390.20
2107 H.	Timberland	390.47
2127 H.	"	390.67
2147 H.	Timberland	391.07
2160 H.	"	391.26
2101 H.	"	391.50
WI 209 to WI 206		
2104 H.	Fut Lot	391.80
2192 H.	"	392.08
2197 H.	Timberland	392.27
2179 H.	Timberland	392.47

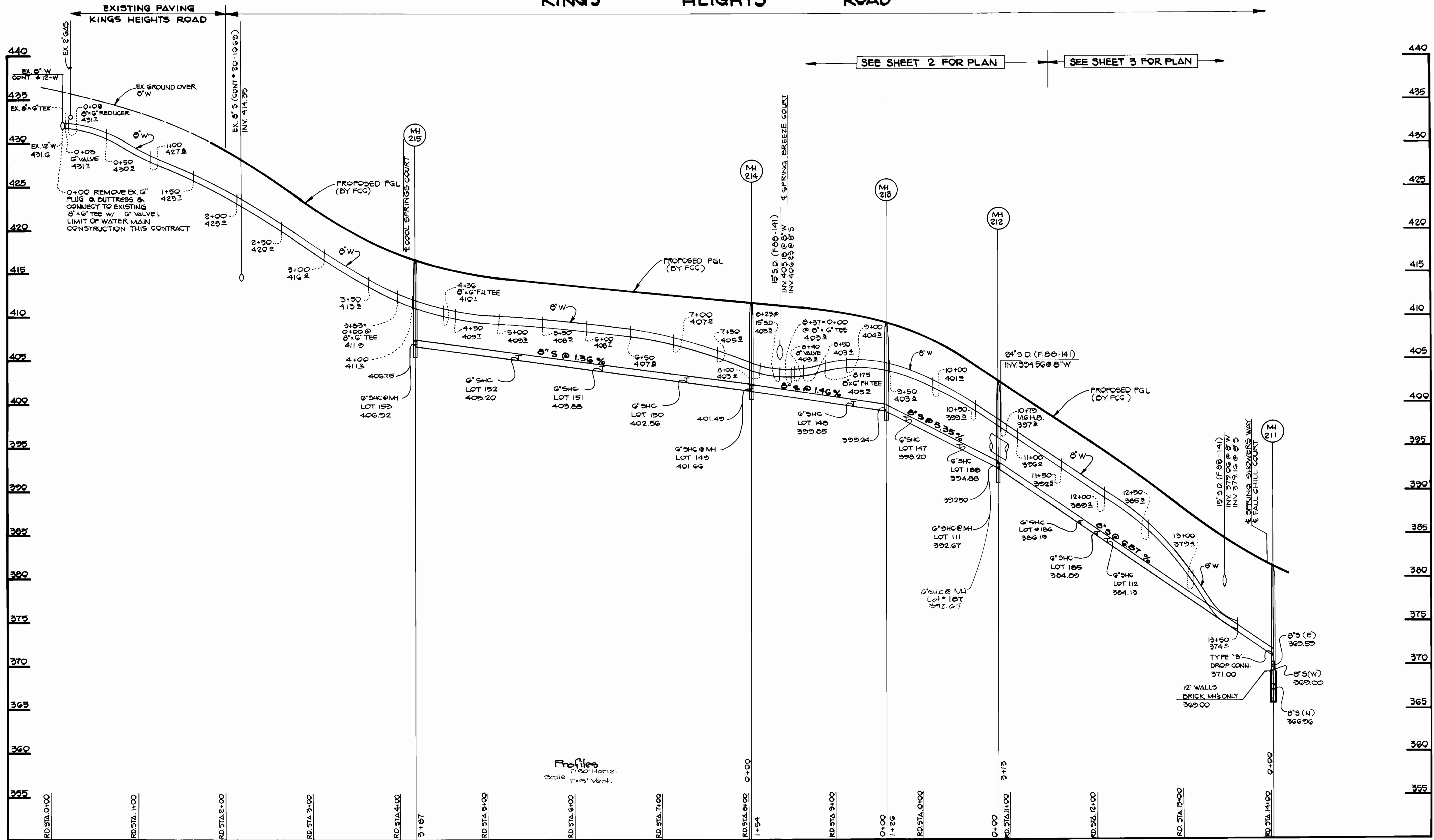


DEPARTMENT OF PUBLIC WORKS HOWARD COUNTY, MARYLAND Director of Public Works: <i>James W. ...</i> 1/20/89 Chief, Bureau of Engineering: <i>Robert ...</i> 1/20/89 Chief, Bureau of Utilities: <i>Robert ...</i> 1/20/89 Chief, Land Development Division: <i>Robert ...</i> 1/20/89		FISHER, COLLINS, AND CARTER, INC. #9757 CONSULTING ENGINEERS AND LAND SURVEYORS 8388 COURT AVENUE ELLICOTT CITY, MARYLAND 21043 Terrell A. Fisher		DES: T.A.F. DRN: M.F. CHK: P.W.K. DATE: 1/12/89 S.F.H. RAISE M# 205 AND CHANGE GRADE 4/4/91 BY NO. REVISION DATE		PLAN AND PROFILES SEWER MAINS 600 SCALE MAP NO 25 BLOCK NO.		AUTUMN MANOR SECTION 1 - AREA 2 CONTRACT NO. 14-1692-D SECOND ELECTION DISTRICT HOWARD COUNTY, MARYLAND		SCALE AS SHOWN SHEET 4 OF 8	
---	--	---	--	---	--	---	--	---	--	--------------------------------	--

AS-BUILT 3/1/90

CONTRACT NO. 14-1692-D
 AUTUMN MANOR SECTION 1 - AREA 2
 WATER AND SEWER MAIN EXTENSIONS
 HOWARD COUNTY, MARYLAND

KINGS HEIGHTS ROAD



Revised Profiles

**REVISED CONSTRUCTION DRAWINGS
SUPERCEDE ORIGINALS SIGNED ON
7/26/88 BY DIRECTOR**

CONTRACT NO. 14-1692-D
AUTUMN MANOR
SECTION ONE AREA TWO
WATER AND SEWER MAIN EXTENSIONS
HOWARD COUNTY, MARYLAND

DEPARTMENT OF PUBLIC WORKS
HOWARD COUNTY, MARYLAND

James J. ... 1/20/89
DIRECTOR OF PUBLIC WORKS DATE

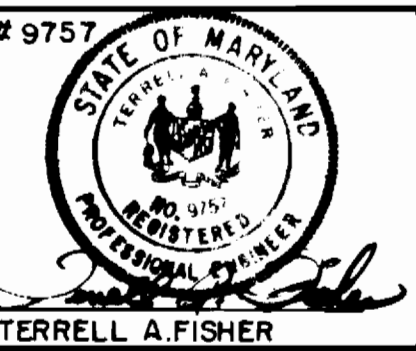
Robert ... 1/20/89
CHIEF, BUREAU OF UTILITIES DATE

... 1/20/89
CHIEF, LAND DEVELOPMENT DIVISION DATE

FISHER, COLLINS, AND CARTER, INC.
CONSULTING ENGINEERS AND LAND SURVEYORS
8388 COURT AVENUE
ELLCOTT CITY, MARYLAND 21043

9757

Terrell A. Fisher
TERRELL A. FISHER



DES: G. W.			
DRN: G. W.			
CHK: P. W. K.			
DATE:			
G.W. BY	Revise Lot Numbers on Profiles	1/20/89	
NO.	REVISION	DATE	

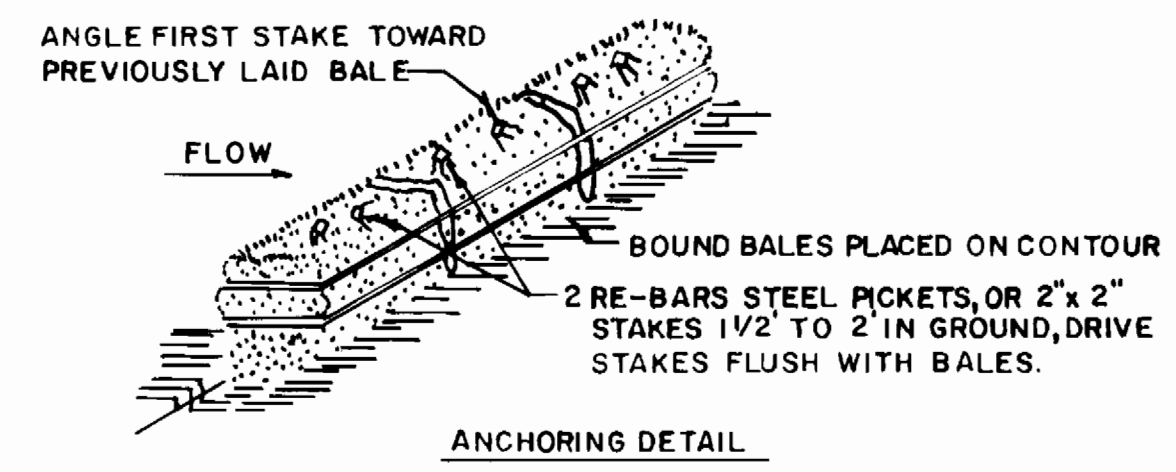
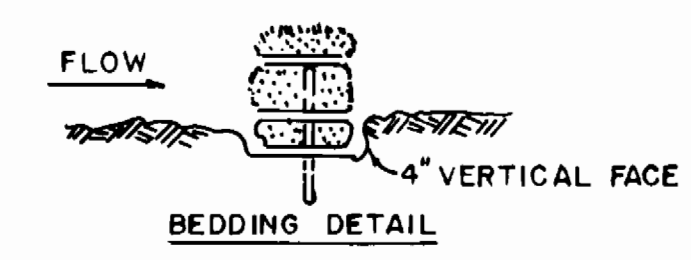
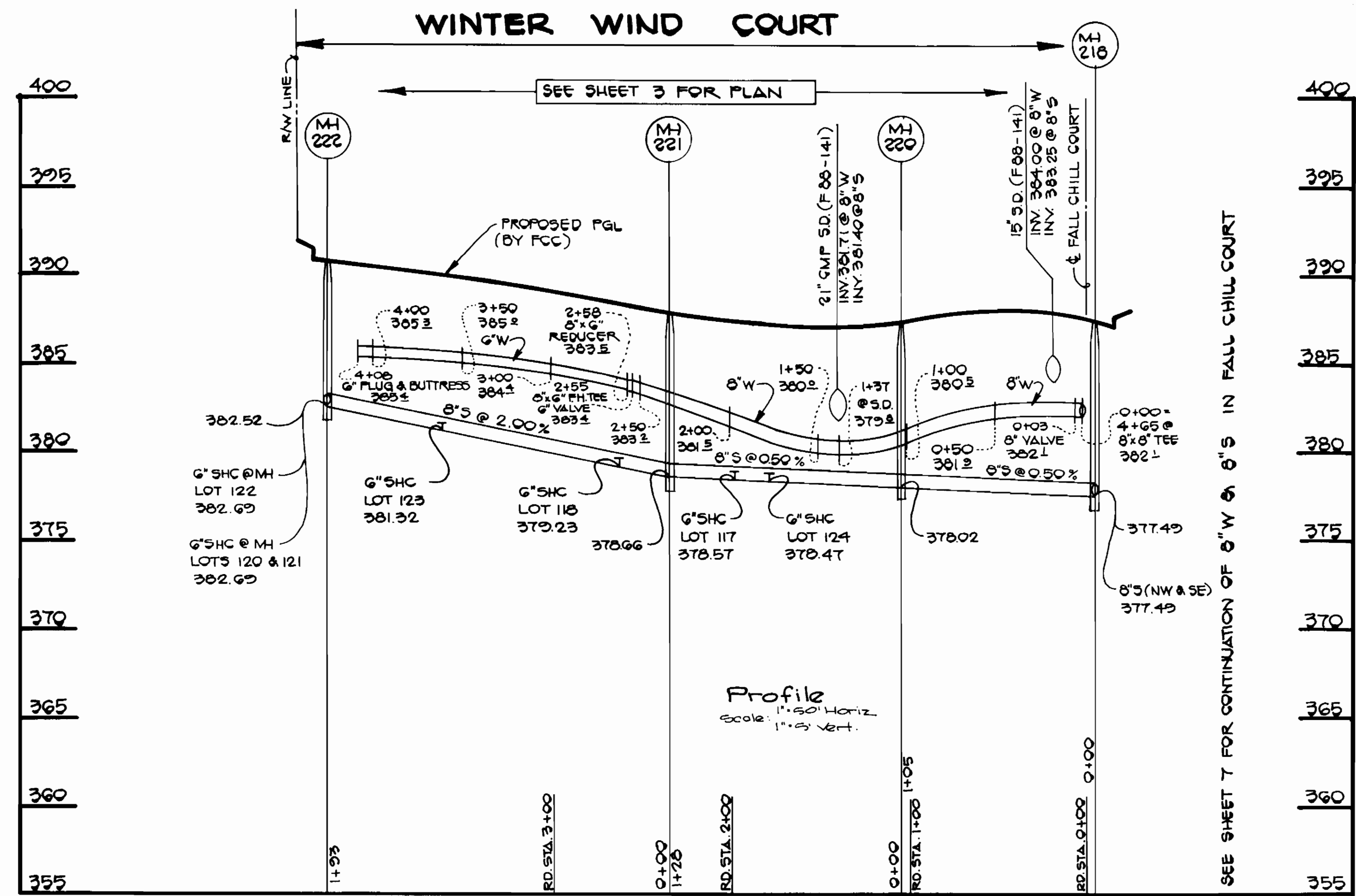
PROFILES
WATER AND SEWER MAINS

600' SCALE MAP NO. _____ BLOCK NO. _____

AUTUMN MANOR
SECTION ONE AREA TWO
CONTRACT NO. 14-1692 - D
SECOND ELECTION DISTRICT
HOWARD COUNTY, MARYLAND

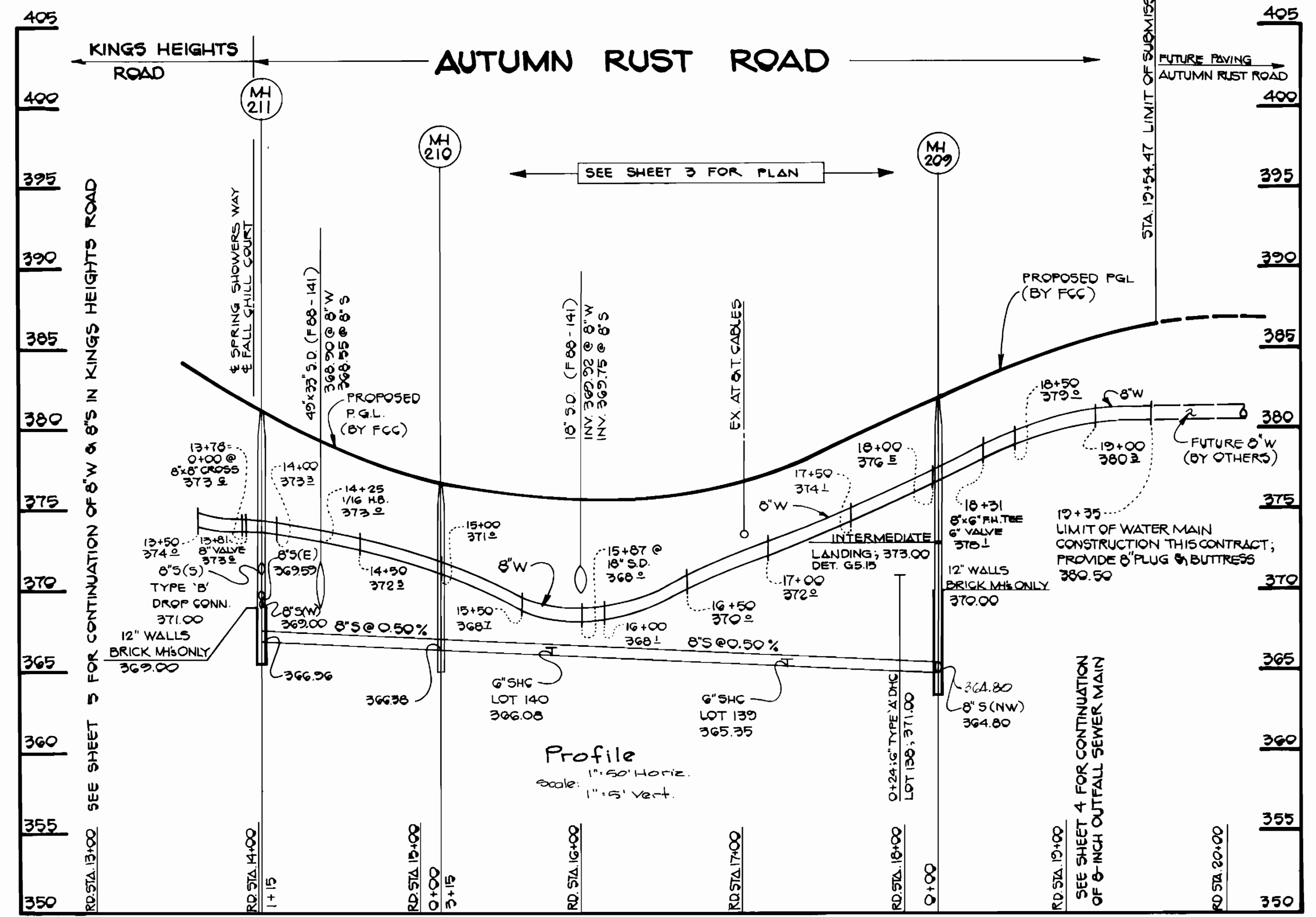
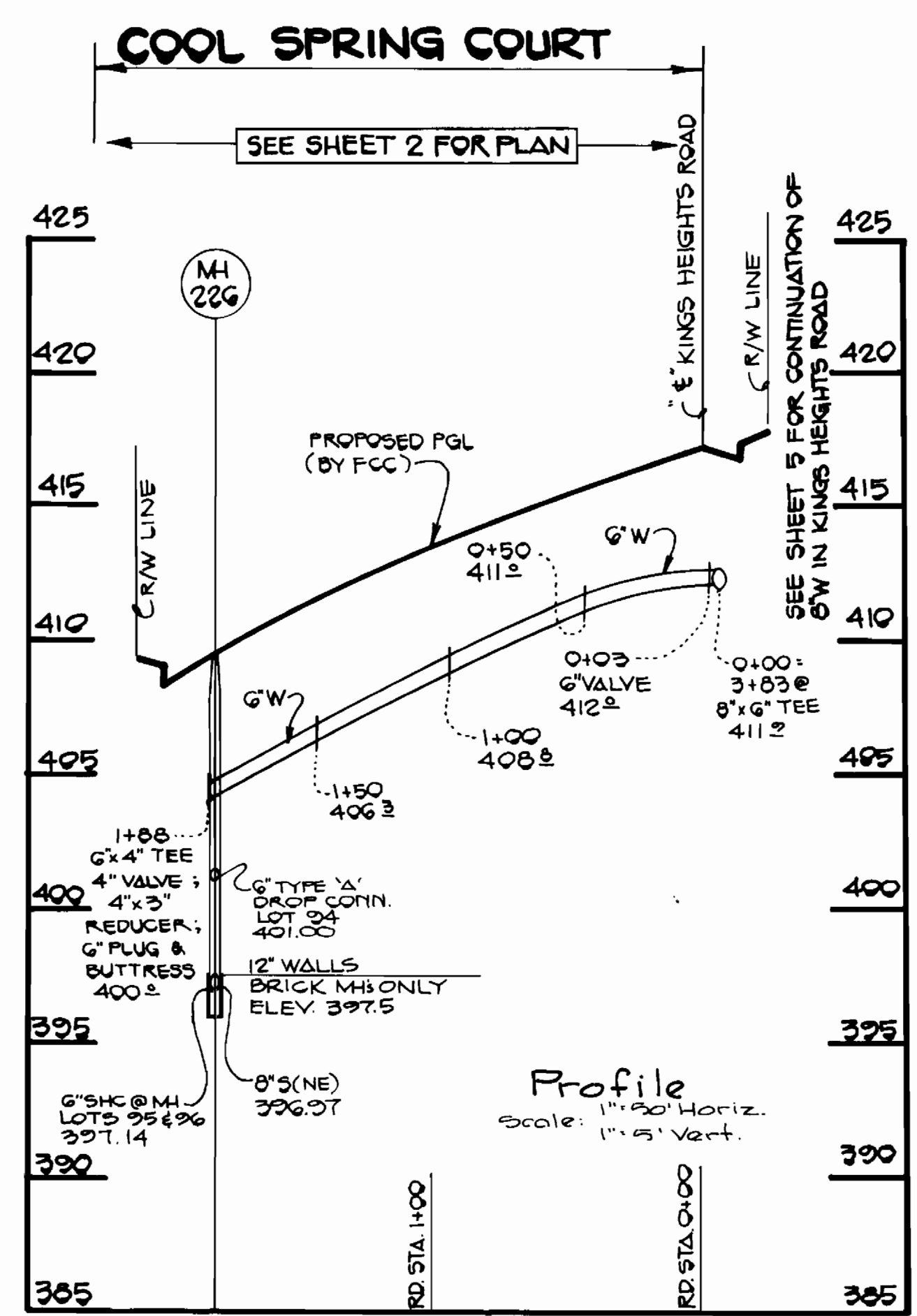
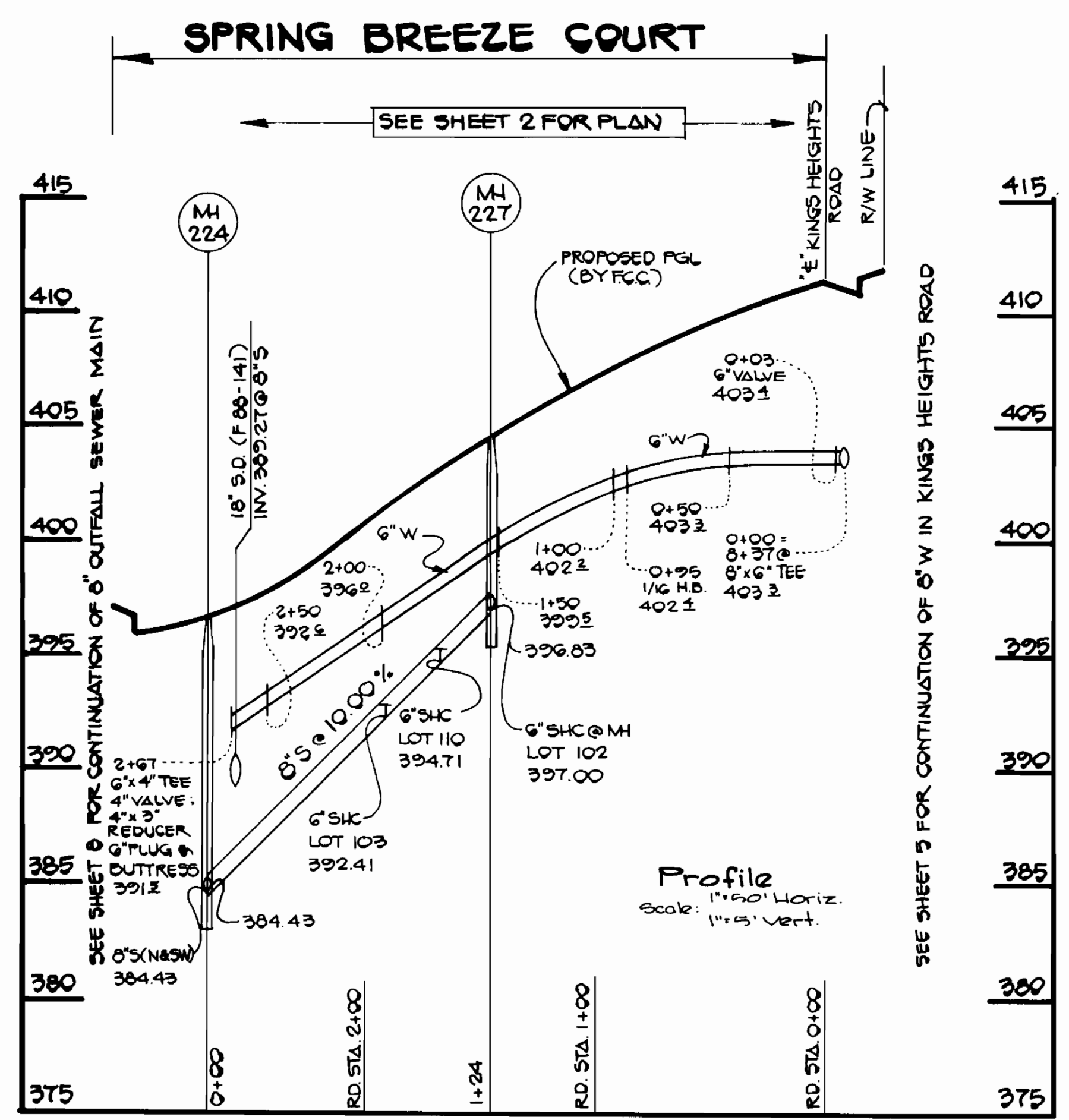
SCALE AS SHOWN

SHEET 5 OF 6



STRAW BALE DIKE

1. BALES SHALL BE PLACED AT THE TOE OF A SLOPE OR ON THE CONTOUR AND IN A ROW WITH ENDS TIGHTLY ABUTTING THE ADJACENT BALES.
2. EACH BALE SHALL BE EMBEDDED IN THE SOIL A MINIMUM OF 4 INCHES, AND PLACED SO THE BINDINGS ARE HORIZONTAL.
3. BALES SHALL BE SECURELY ANCHORED IN PLACE BY EITHER TWO STAKES OR RE-BARS DRIVEN THROUGH THE BALE. THE FIRST STAKE IN EACH BALE SHALL BE DRIVEN TOWARD THE PREVIOUSLY LAID BALE AT AN ANGLE TO FORCE THE BALES TOGETHER. STAKES SHALL BE DRIVEN FLUSH WITH THE BALE.
4. INSPECTION SHALL BE FREQUENT AND REPAIR REPLACEMENT SHALL BE MADE PROMPTLY AS NEEDED.
5. BALES SHALL BE REMOVED WHEN THEY HAVE SERVED THEIR USEFULNESS SO AS NOT TO BLOCK OR IMPEDE STORM FLOW OR DRAINAGE.



Revised Profiles

REVISED CONSTRUCTION DRAWINGS
SUPERCEDE ORIGINALS SIGNED ON
7/26/88 BY DIRECTOR

CONTRACT NO. 14-1692-D
AUTUMN MANOR
SECTION 1 AREA 2
WATER AND SEWER MAIN EXTENSIONS
HOWARD COUNTY, MARYLAND

DEPARTMENT OF PUBLIC WORKS
HOWARD COUNTY, MARYLAND

James M. Clark 1/20/89
DIRECTOR OF PUBLIC WORKS DATE

Robert W. Benner 1-20-89
CHIEF, BUREAU OF UTILITIES DATE

Richard A. Fisher 1/20/89
CHIEF, LAND DEVELOPMENT DIVISION DATE

FISHER, COLLINS, AND CARTER, INC.
CONSULTING ENGINEERS AND LAND SURVEYORS
8388 COURT AVENUE
ELLCOTT CITY, MARYLAND 21043

TERRELL A. FISHER

DES: G.W.			
DRN: G.W.			
CHK: P.W.K.			
DATE:	BY NO.	REVISION	DATE

PROFILES
WATER AND SEWER MAINS

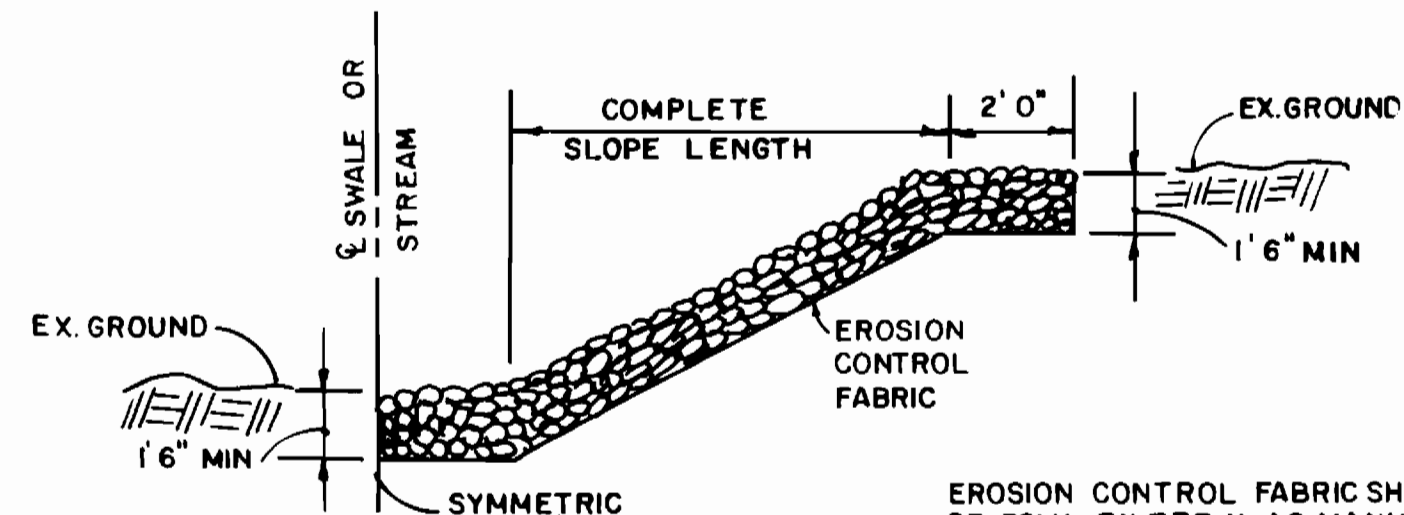
600' SCALE MAP NO. _____ BLOCK NO. _____

AUTUMN MANOR
SECTION 1 AREA 2
CONTRACT NO. 14-1692-D
SECOND ELECTION DISTRICT
HOWARD COUNTY, MARYLAND

SCALE AS SHOWN

SHEET 6 OF 6

RIP RAP TO CONSIST OF DENSE ROCKS OF RANDOM SHAPE AND SIZES RESISTANT TO THE ACTION OF AIR & WATER AND SUITABLE FOR BANK PROTECTION. ALL ROCKS TO WEIGH A MINIMUM OF 75 POUNDS.



EROSION CONTROL FABRIC SHALL BE POLY FILTER-X AS MANUFACTURED BY CARTHAGE MILLS, INC. OR PERMEALINER M-1195 AS MANUFACTURED BY STAFF INDUSTRIES, INC. OR EQUAL

SEE PLAN SHEETS NO. 3 & 4 FOR LOCATIONS OF RIP-RAP

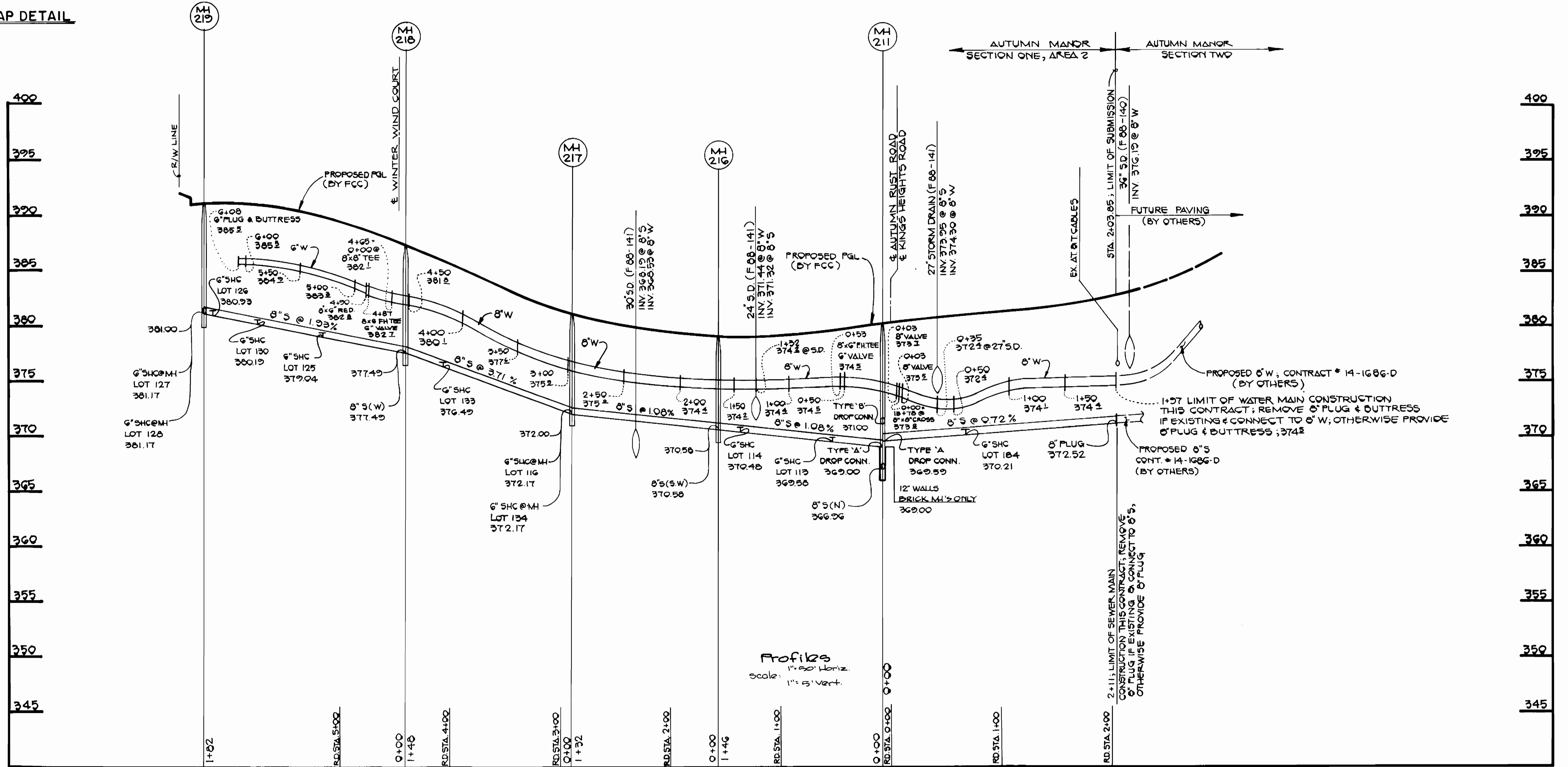
UNGRADED RIP RAP DETAIL

NO SCALE

FALL CHILL COURT

SPRING SHOWERS WAY

SEE SHEET 3 FOR PLAN



Profiles
Scale: 1" = 20' Horiz.
1" = 5' Vert.

Revised Profiles

REVISED CONSTRUCTION DRAWINGS
SUPERSEDE ORIGINALS SIGNED ON
7/26/88 BY DIRECTOR.

CONTRACT NO. 14-1692-D
AUTUMN MANOR
SECTION 1 AREA 2
WATER AND SEWER MAIN EXTENSIONS
HOWARD COUNTY, MARYLAND

DEPARTMENT OF PUBLIC WORKS
HOWARD COUNTY, MARYLAND
James P. [Signature] 11/20/89
DIRECTOR OF PUBLIC WORKS DATE
[Signature] 1-29-89
CHIEF, BUREAU OF UTILITIES DATE

FISHER, COLLINS, AND CARTER, INC.
CONSULTING ENGINEERS AND LAND SURVEYORS
8388 COURT AVENUE
ELLCOTT CITY, MARYLAND 21043
#975
[Seal]
TERRELLA A. FISHER

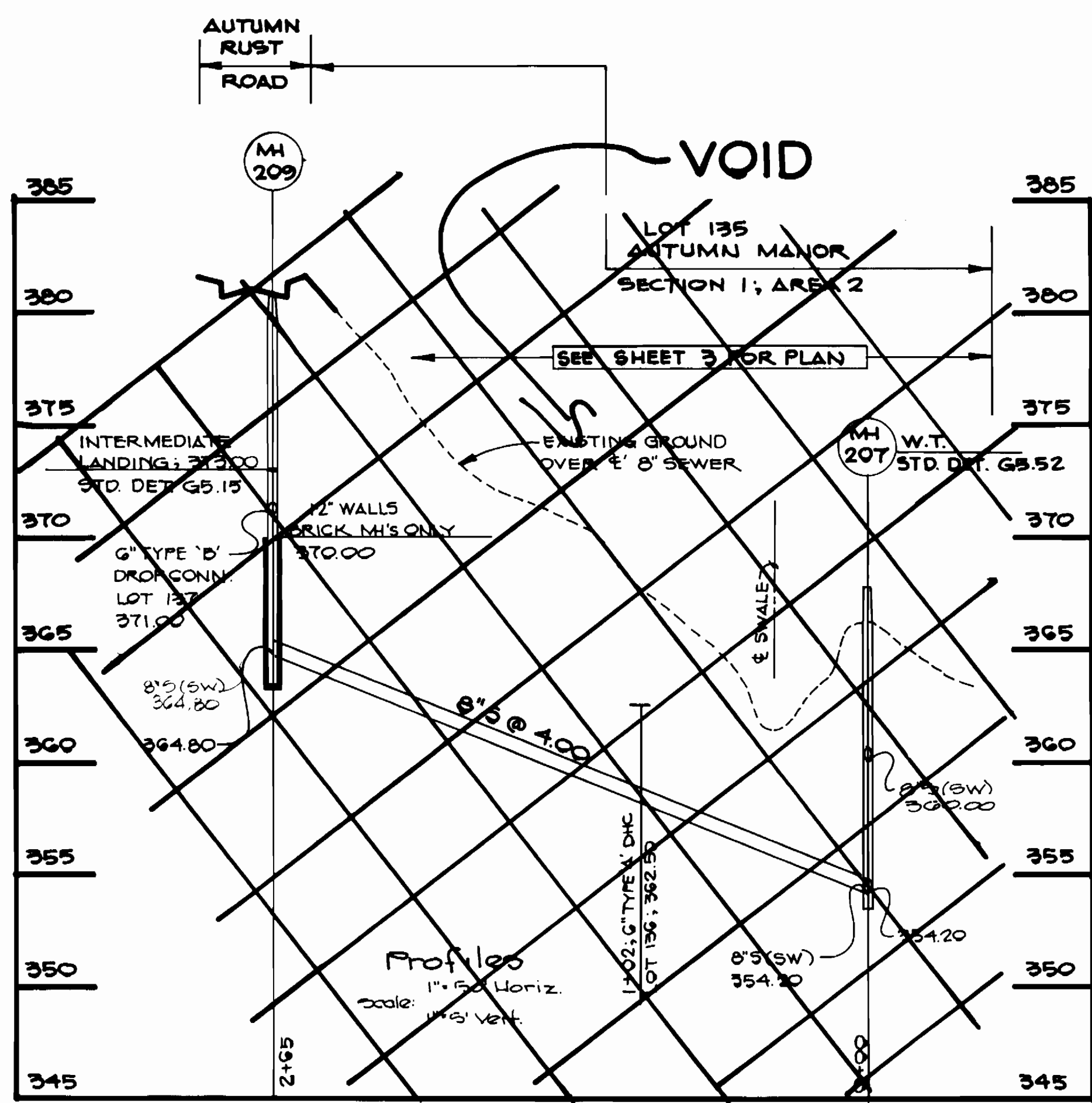
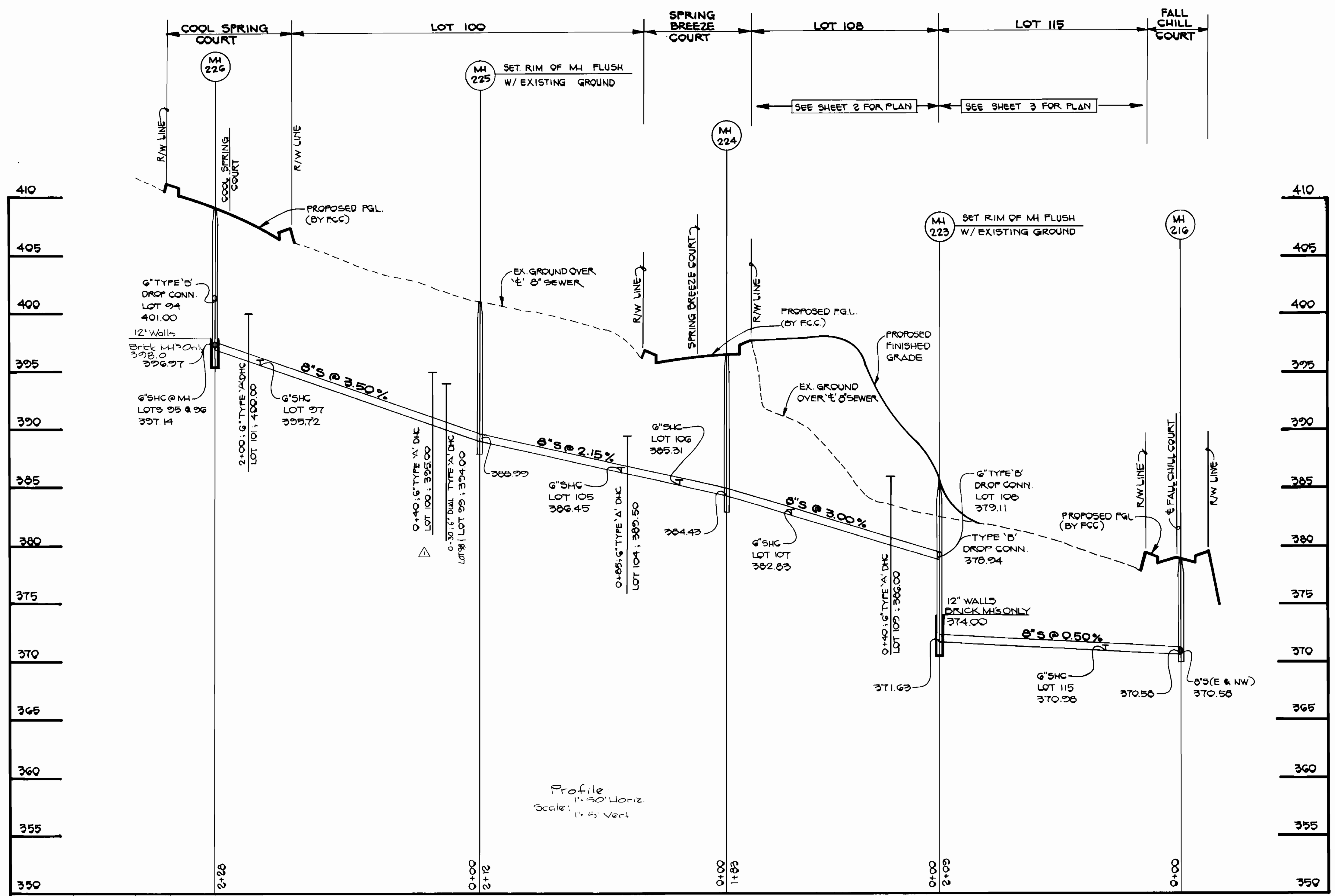
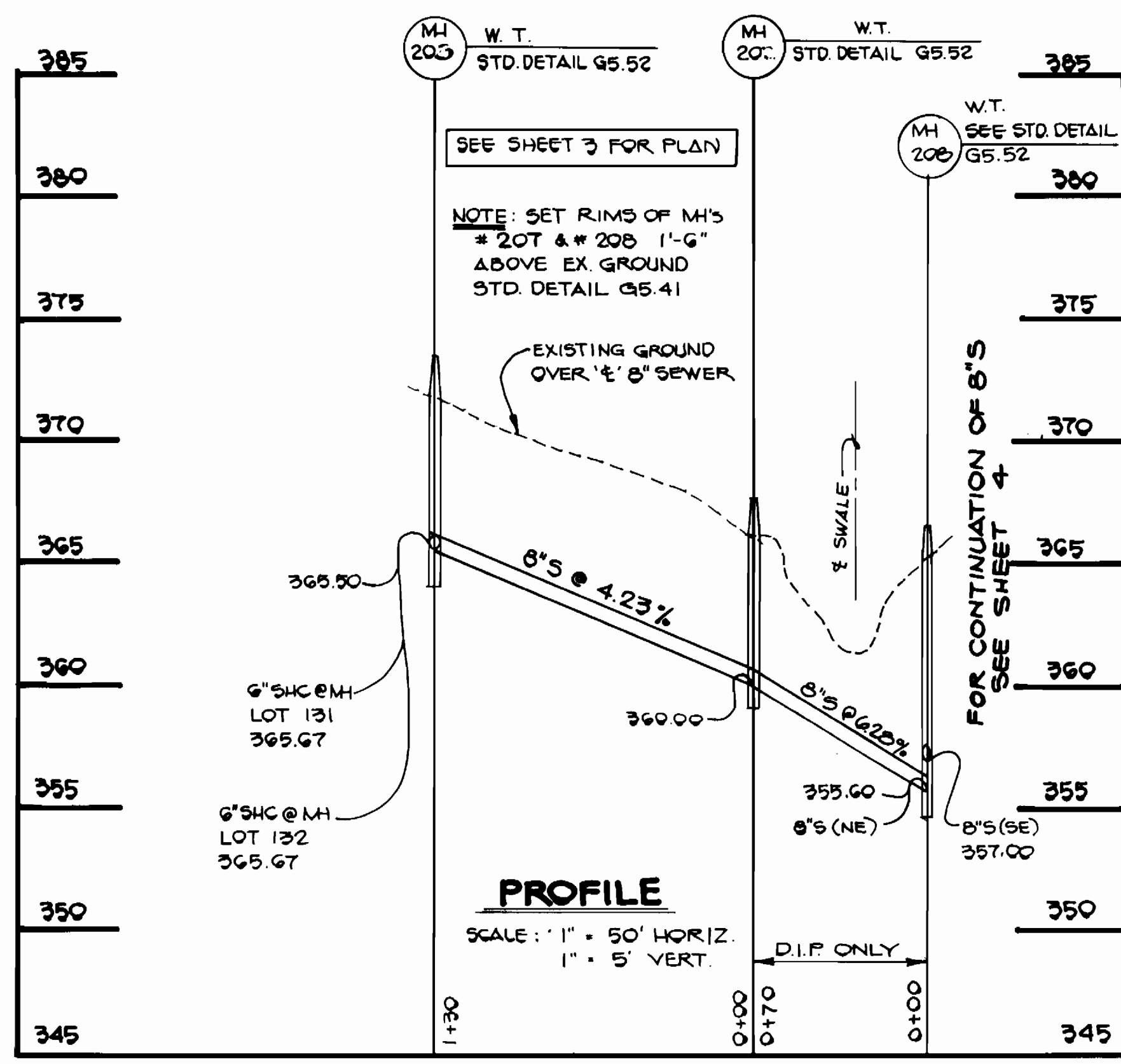
DES: G.W.			
DRN: G.W.			
CHK: P.W.K.			
DATE:	G.W.	BY NO.	REVISION
	Revise Lot Number in Profile	4/6/89	

PROFILES
WATER AND SEWER MAINS
600' SCALE MAP NO. _____ BLOCK NO. _____

AUTUMN MANOR
SECTION 1 AREA 2
CONTRACT NO. 14-1692-D
SECOND ELECTION DISTRICT
HOWARD COUNTY, MARYLAND
SCALE AS SHOWN
SHEET 7 OF 8

LOT 134 AUTUMN MANOR
SECT. 1, AREA 2

LOT 135, OPEN SPACE AUTUMN MANOR
SECT. 1, AREA 2



Revised Profiles

REVISED CONSTRUCTION DRAWINGS
SUPERSEDE ORIGINALS SIGNED ON
7/26/88 BY DIRECTOR

CONTRACT NO. 14-1692-D
AUTUMN MANOR
SECTION 1 AREA 2
WATER AND SEWER MAIN EXTENSIONS
HOWARD COUNTY, MARYLAND

DEPARTMENT OF PUBLIC WORKS
HOWARD COUNTY, MARYLAND

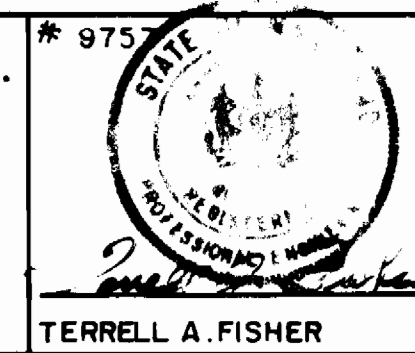
James P. ... 1/20/89
DIRECTOR OF PUBLIC WORKS DATE

Robert ... 1-20-89
CHIEF, BUREAU OF UTILITIES DATE

William ... 1/20/89
CHIEF, BUREAU OF ENGINEERING DATE

Paul ... 1/20/89
CHIEF, LAND DEVELOPMENT DIVISION DATE

FISHER, COLLINS, AND CARTER, INC.
CONSULTING ENGINEERS AND LAND SURVEYORS
8388 COURT AVENUE
ELLCOTT CITY, MARYLAND 21043



DES: G.W.				
DRN: G.W.				
CHK: P.W.K.				
DATE:				
BY NO.				
REVISION				
DATE				

PROFILES
SEWER MAINS

600 SCALE MAP NO. _____ BLOCK NO. _____

AUTUMN MANOR
SECTION 1 AREA 2
CONTRACT NO. 14-1692-D
SECOND ELECTION DISTRICT
HOWARD COUNTY, MARYLAND

SCALE AS SHOWN

SHEET 8 OF 8