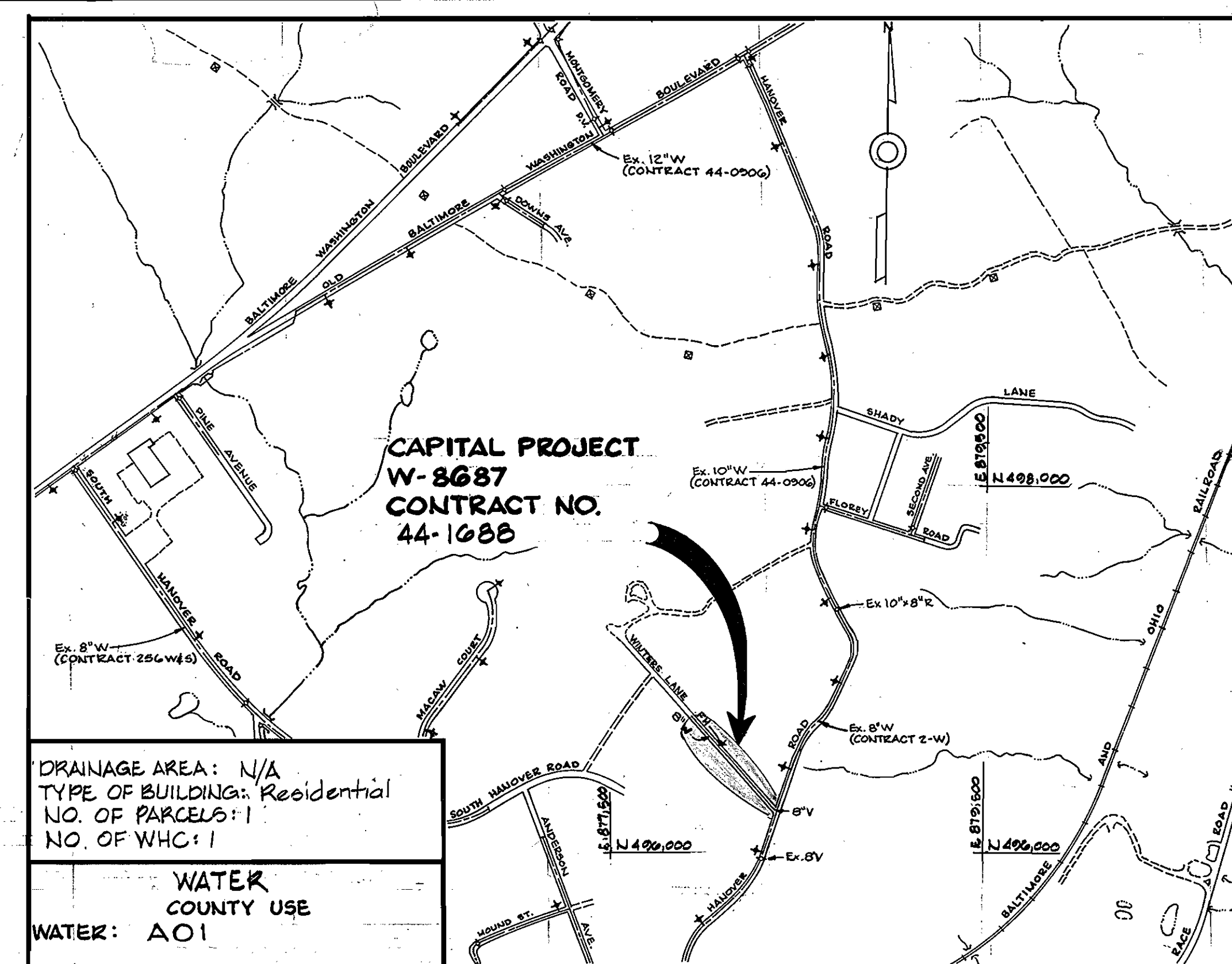
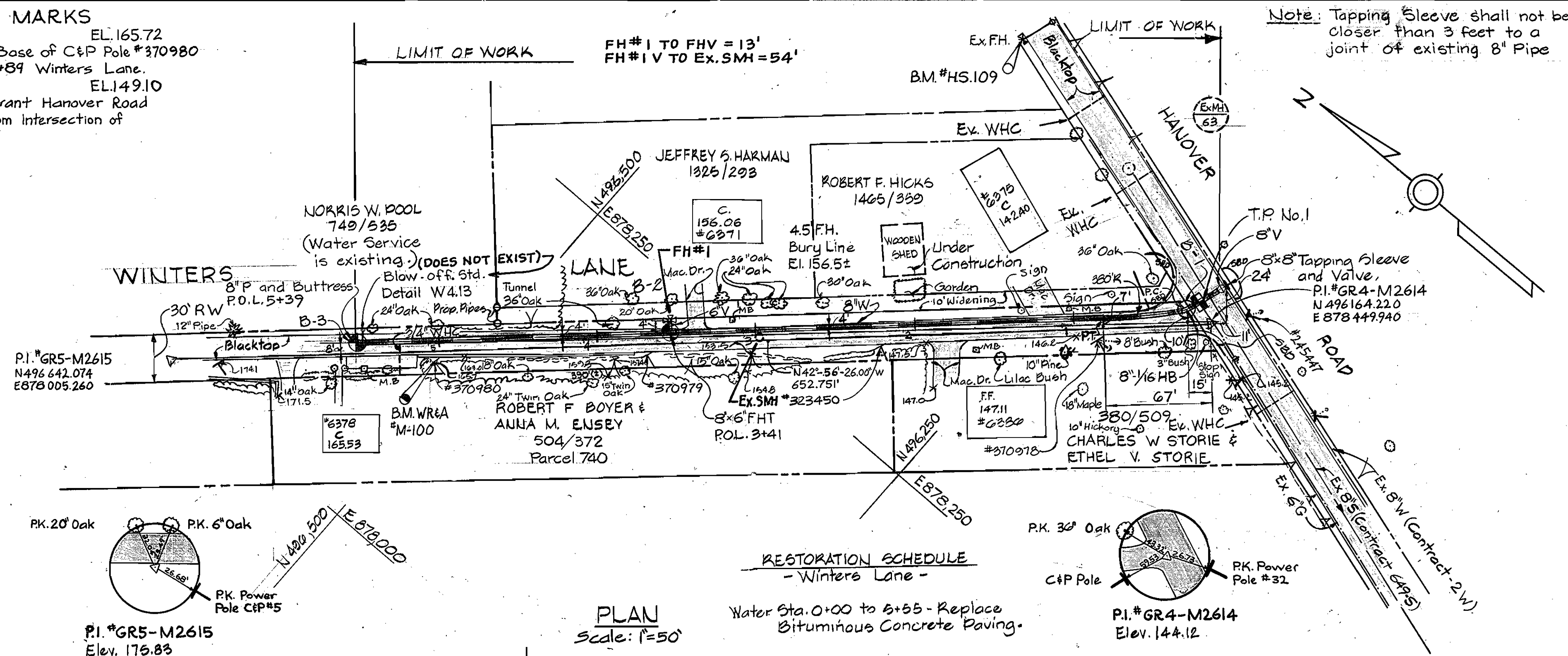
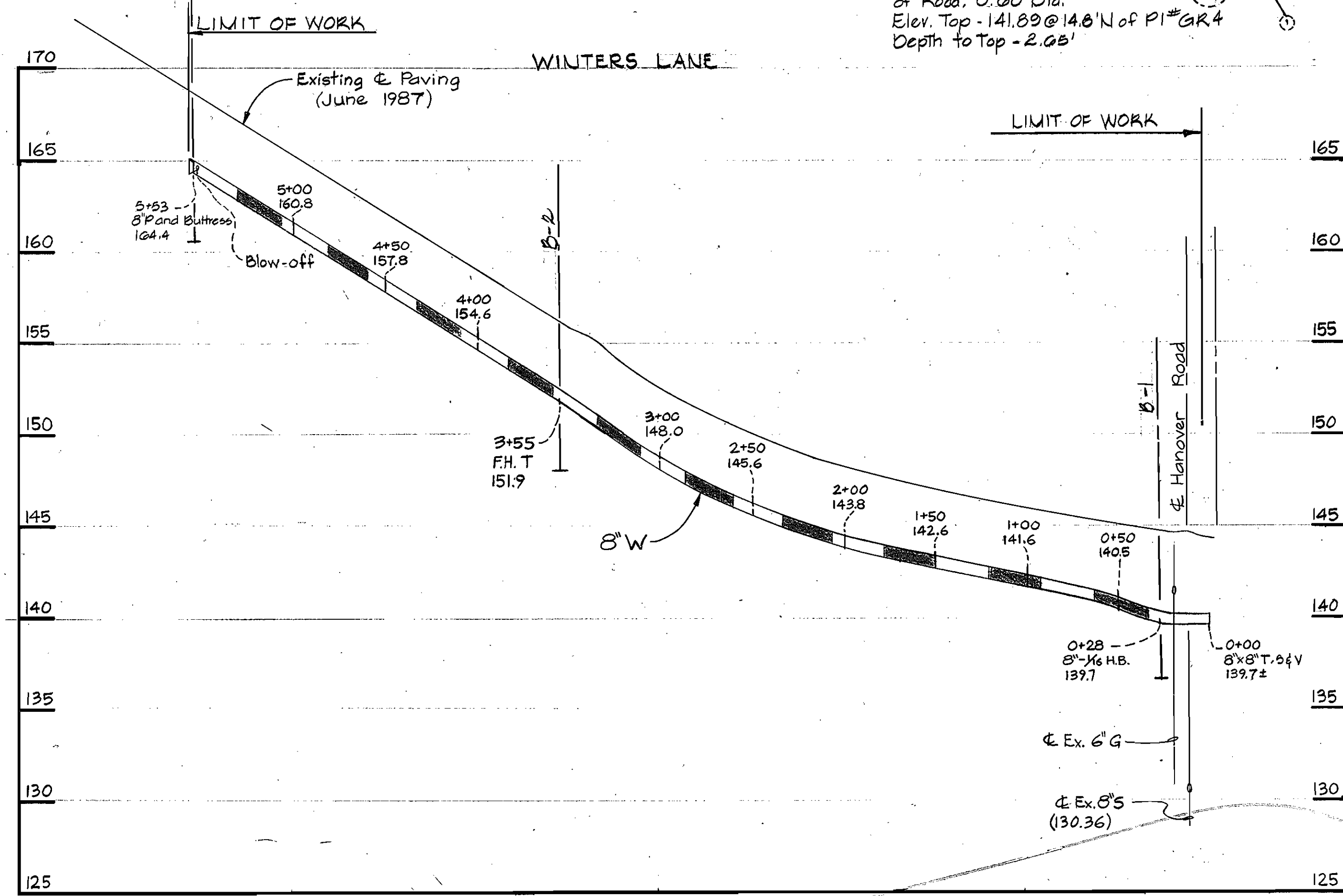


BENCH MARKS
 WR&A. B.M. *M-100 EL. 165.72
 R.R. Spike in Base of C&P Pole #370980
 Left of Sta. 4+89 Winters Lane.
 B.M. *H.S.109 EL. 149.10
 Top of Fire Hydrant Manover Road
 210' North from Intersection of
 Winters Lane



Note: All Water House Connections shall be 3/4". Install by Open Cut Excavation.



QUANTITIES			
ITEM	BID	AS BUILT	MATERIAL/SUPPLIER
8" Water L.F.	560		
6" Water L.F.	0		
8" T&V Ea.	1		
Fire Hydrants Ea.	1		
3/4" W.H.C. L.F.	20		
Blow-off	1		

REVIEWED FOR HOWARD SOIL CONSERVATION DISTRICT AND MEETS TECHNICAL REQUIREMENT

SIGNATURE: _____ DATE: _____
 U.S. SOIL CONSERVATION SERVICE

This Development Plan is approved for Soil Erosion and Sediment Control by the Howard County Conservation District

APPROVED: *Stephen P. Huber* 9/22/07
 HOWARD S.C.D. DATE

Sediment Control Measures for this Contract will be implemented in accordance with Section 219 of the Standard Specifications.

AS-BUILT PER CAPITAL PROJECT J-4143

AS BUILT
 DATE: AUG. 2008

DEPARTMENT OF PUBLIC WORKS
 HOWARD COUNTY, MARYLAND.

James J. Lewis 9/23/07
 DIRECTOR OF PUBLIC WORKS - DATE

Paul J. Pappas 9/16/07
 CHIEF - BUREAU OF UTILITIES - DATE

WHITMAN, REQUARDT AND ASSOCIATES ENGINEERS
 2315 ST. PAUL ST.
 BALTIMORE, MARYLAND

DES: S.J.			
DRN: C.S.			
CHK: R.B.U.			
DATE:			

VICINITY MAP
 PLAN & PROFILE
 OF WATER MAINS

600' SCALE MAP NO. 38 BLOCK NO.

38-496-879.5 CAPITAL PROJECT W-8687

WINTERS LANE
 WATER MAIN
 ELECTION DISTRICT NO. 1
 HOWARD COUNTY
 CONTRACT NO. 44-1688

SCALE AS SHOWN
 SHEET 1 OF 1