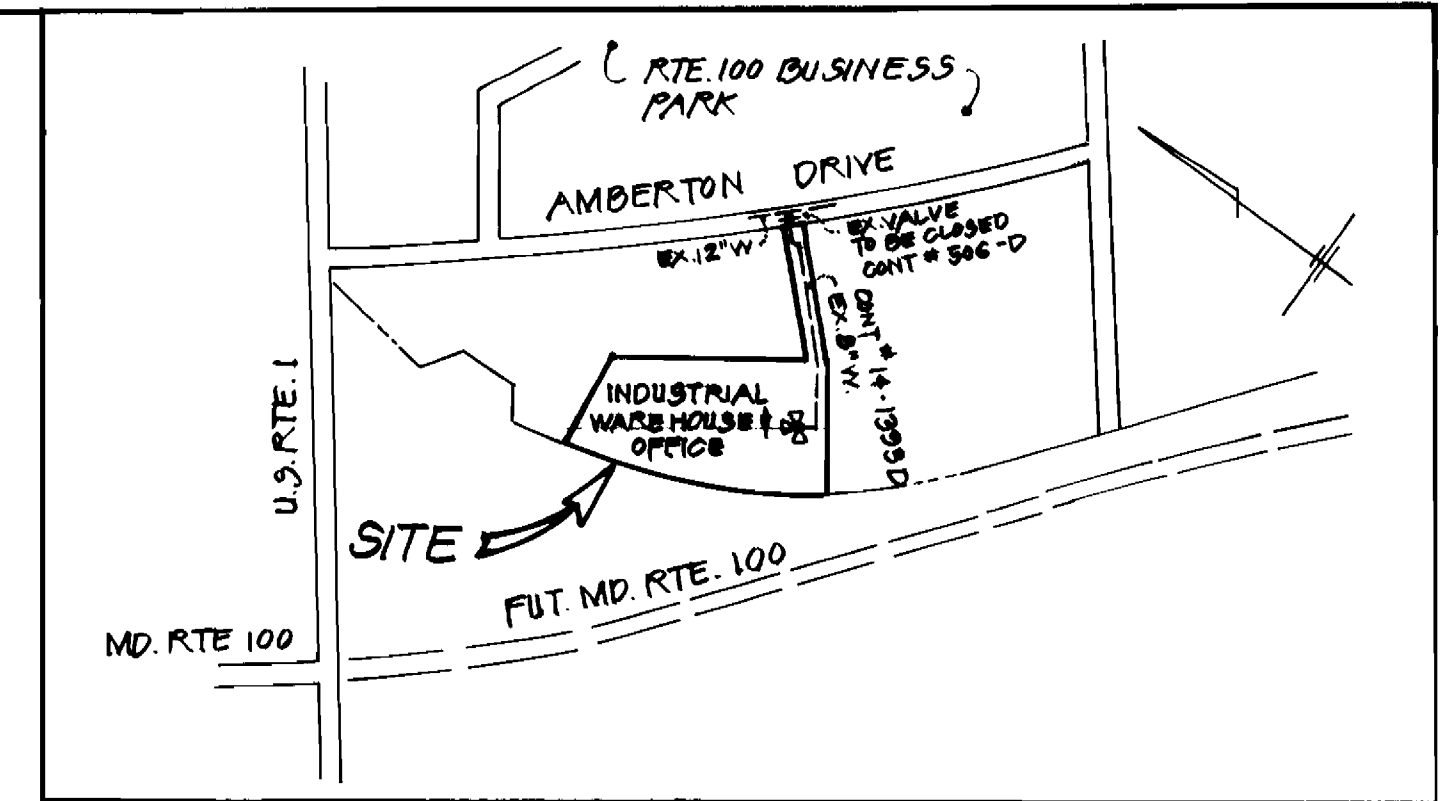
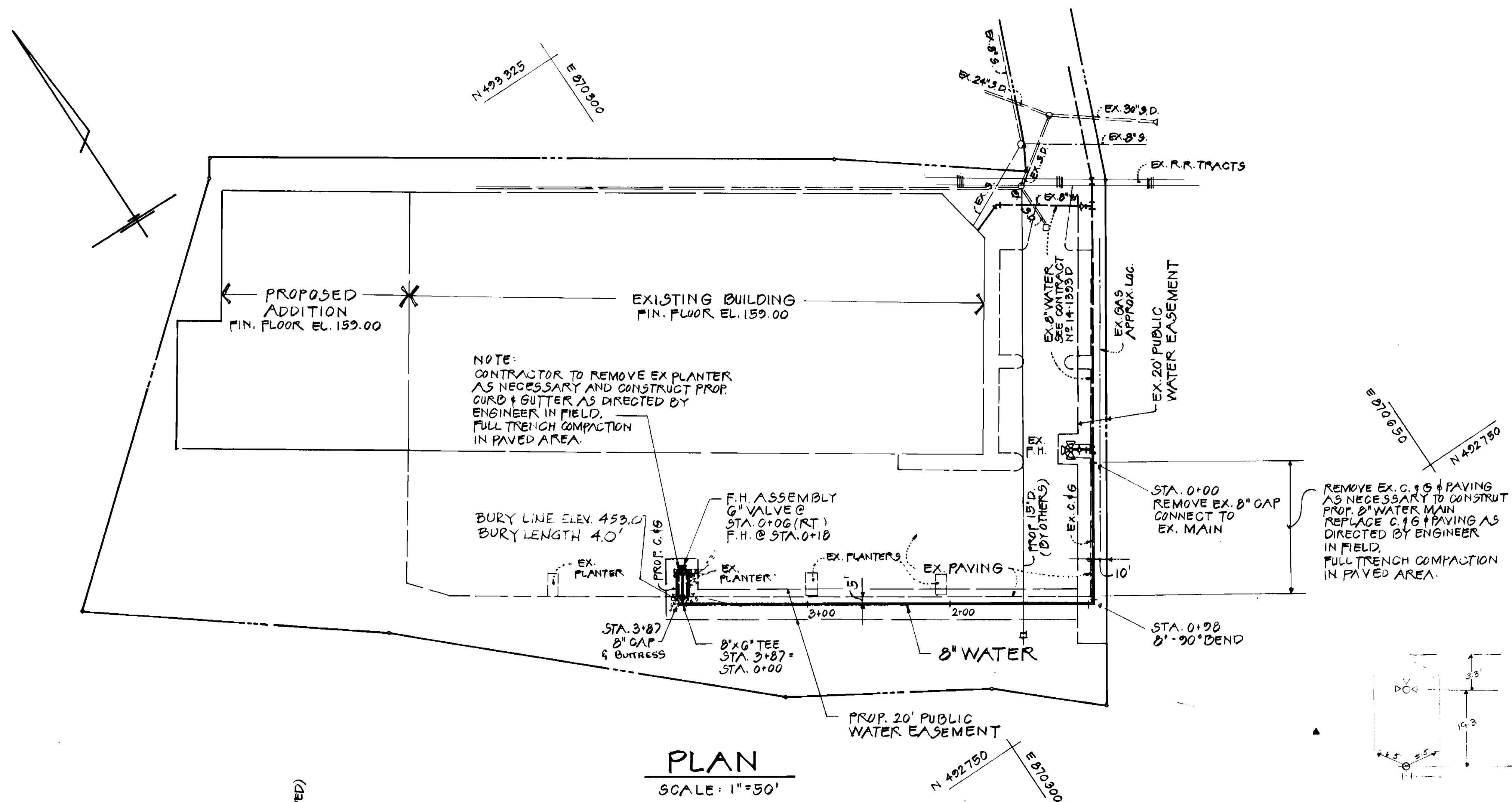


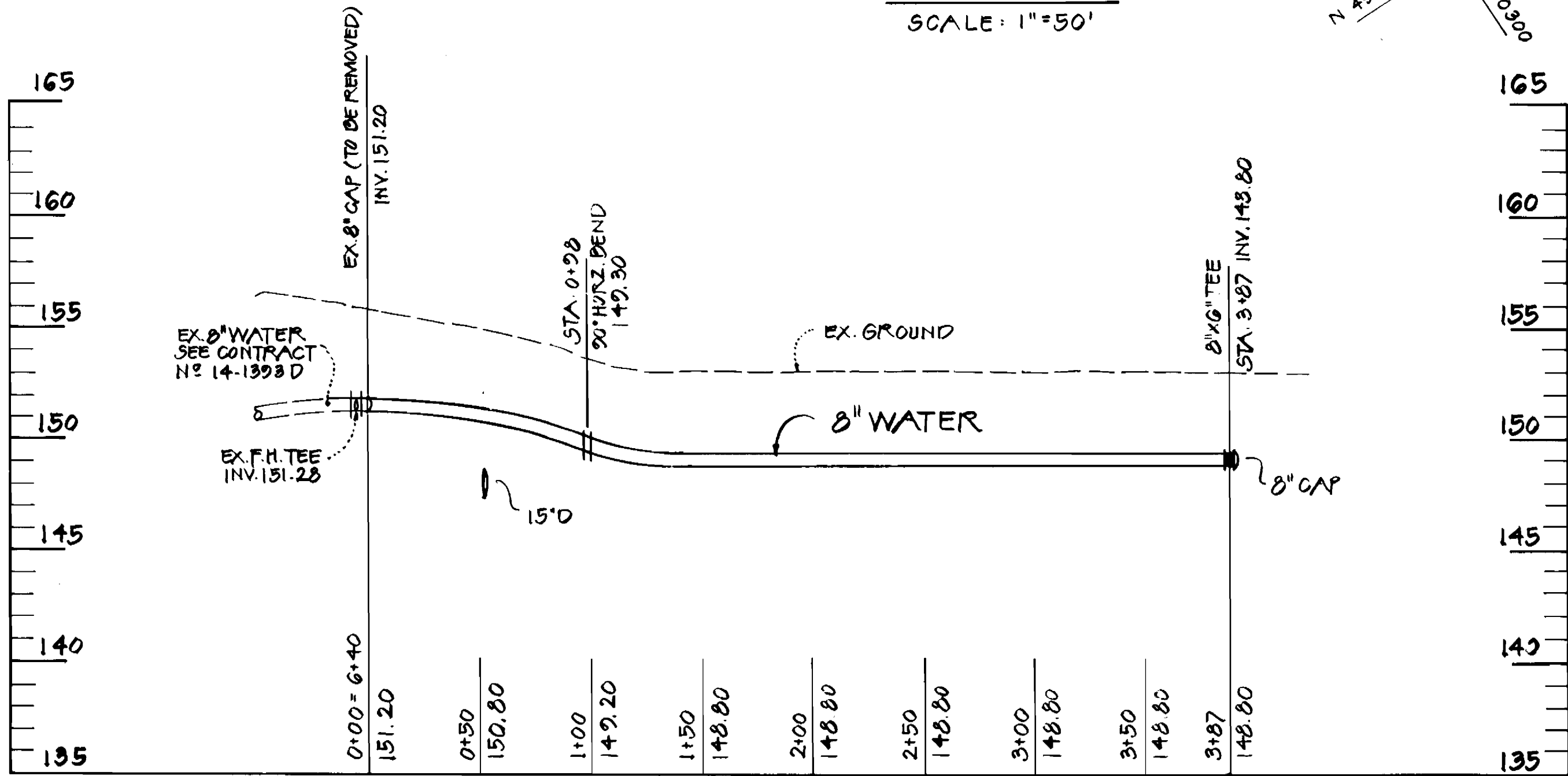
DRAINAGE AREA - 4.79 AC.
 W.H.C. = 1
 S.H.C. = 1
 WATER CODE: A-04
 DRAINAGE BASIN - PATAPSCO



VICINITY MAP
 SCALE: 1"=600'



PLAN
 SCALE: 1"=50'



PROFILE
 SCALE: 1"=50' HORIZ.
 1"=5' VERT.

QUANTITIES			
ITEM	EST'D	AS BUILT	SUPPLIER
8" WATER	387 L.F.	387 L.F.	MINNTEC STATES
6" WATER	10 L.F.	18 L.F.	" "
FIRE HYDRANT	1 EA.	1 EA.	WILCOX/HCP
6" F.H. VALVE	1 EA.	1 EA.	" "
6" X 6" TEE	1 EA.	1 EA.	TRINITY VALVES
8" GAP	1 EA.	1 EA.	" "
8" 90° BEND	1 EA.	1 EA.	" "

- ### GENERAL NOTES
- APPROXIMATE LOCATION OF EXIST. MAINS ARE SHOWN. THE CONTRACTOR SHALL TAKE ALL NECESSARY PRECAUTIONS TO PROTECT EXIST. MAINS AND SERVICES AND MAINTAIN UNINTERRUPTED SUPPLY AND DAMAGE INCURRED SHALL BE REPAIRED IMMEDIATELY TO THE SATISFACTION OF THE ENGINEER AT THE CONTRACTOR'S EXPENSE.
 - ALL PIPE ELEVATIONS SHOWN ARE INVERT ELEVATIONS.
 - FOR DETAILS NOT SHOWN ON THE DRAWING, USE HOWARD COUNTY STANDARD DETAILS.
 - FOR MATERIAL AND CONSTRUCTION METHODS, USE HOWARD COUNTY STANDARD SPECIFICATIONS.
 - CONTRACTOR SHALL LOCATE EXIST. UTILITIES A MINIMUM OF TWO (2) WEEKS IN ADVANCE OF CONSTRUCTION OPERATIONS IN THE VICINITY OF PROPOSED UTILITIES AT HIS OWN EXPENSE.
 - CONTRACTOR SHALL NOTIFY THE FOLLOWING UTILITIES OR AGENCIES AT LEAST FIVE (5) WORKING DAYS BEFORE STARTING WORK SHOWN ON THESE PLANS:
 BALTIMORE GAS & ELECTRIC CO. - UNDERGROUND GAS DISTRIBUTION CUSTOMER SERVICE: 685-0123
 BALTIMORE GAS & ELECTRIC CO. - UNDERGROUND ELECTRIC DISTRIBUTION - CUSTOMER SERVICE: 685-0123
 ENGINEERING "DAMAGE CONTROL": 234-5621
 "MIGS UTILITY": 1-559-0100
 CHESAPEAKE & POTOMAC TELEPHONE CO.: 725-9976
 BUREAU OF UTILITIES, HOWARD CO.: 992-2366
 - ALL WATER MAINS TO BE C.I.P. OR D.I.P. UNLESS NOTED OTHERWISE.
 - TOP OF WATER MAINS TO HAVE A MINIMUM OF 3'-6" COVER UNLESS OTHERWISE NOTED.
 - VALVES ADJACENT TO TEES SHALL BE STRAPPED TO TEES.
 - BLOCK ALL FITTINGS WITH CONCRETE.
 - BURY LINE ELEVATIONS ON FIRE HYDRANTS SHALL BE SET TO THE ELEVATION ON THE DRAWINGS. ALL FIRE HYDRANTS SHALL BE STRAPPED AND BUTTRESSED WITH CONCRETE IN ACCORDANCE WITH STANDARD DETAILS, SOIL AROUND THE FIRE HYDRANTS TO BE COMPACTED IN ACCORDANCE WITH SECTIONS 1003 AND 1008 STANDARD SPECIFICATIONS.
 - THE CONTRACTOR SHALL NOT OPERATE ANY WATER VALVES ON THE EXISTING SYSTEM.
 - SERVICE CLAMPS ARE TO HAVE STAINLESS STRAPS.

SEDIMENT CONTROL MEASURES FOR THIS CONTRACT WILL BE IMPLEMENTED IN ACCORDANCE WITH SECTION 219 OF THESE SPECIFICATIONS AND ALSO AS SHOWN ON THE GRADING AND SEDIMENT CONTROL PLAN, SDP-87-104

THIS DEVELOPMENT PLAN IS APPROVED FOR EROSION AND SEDIMENT CONTROL BY HOWARD SOIL CONSERVATION DISTRICT.

REVIEW FOR HOWARD COUNTY SOIL CONSERVATION DISTRICT AND MEETS TECHNICAL REQUIREMENTS.
 APPROVED: *James M. Klein* 8-18-87
 U.S. SOIL CONSERVATION SERVICE DATE

APPROVED: *Stephen L. Fisher* 8/18/87
 HOWARD SOIL CONSERVATION DISTRICT DATE

CONTRACT NO 44-1687-D
 PARCEL D-2 BLOCK B
 WATER EXTENSION
 HOWARD COUNTY, MD.

DEPARTMENT OF PUBLIC WORKS
 HOWARD COUNTY, MARYLAND
 DIRECTOR OF PUBLIC WORKS: *James M. Klein* 8/26/87
 CHIEF, BUREAU OF UTILITIES: *Robert Beinger* 8-24-87

ENGINEER
 PAUL LEE ENGINEERING, INC.
 304 W. PENNSYLVANIA AVENUE
 TOWSON, MARYLAND 21204



DES: H.J.			
DRN: H.J.			
CHK: P.L.			
DATE: P.L.			

WATER
 PLAN AND PROFILE
 600 SCALE MAP NO. 37 BLOCK NO. 8

ROUTE ONE HUNDRED BUSINESS PARK
 6630 AMBERTON DRIVE
 CONTRACT NO 44-1687-D
 FIRST ELECTION DISTRICT HOWARD COUNTY, MD.
 SCALE AS SHOWN
 SHEET 1 OF 1