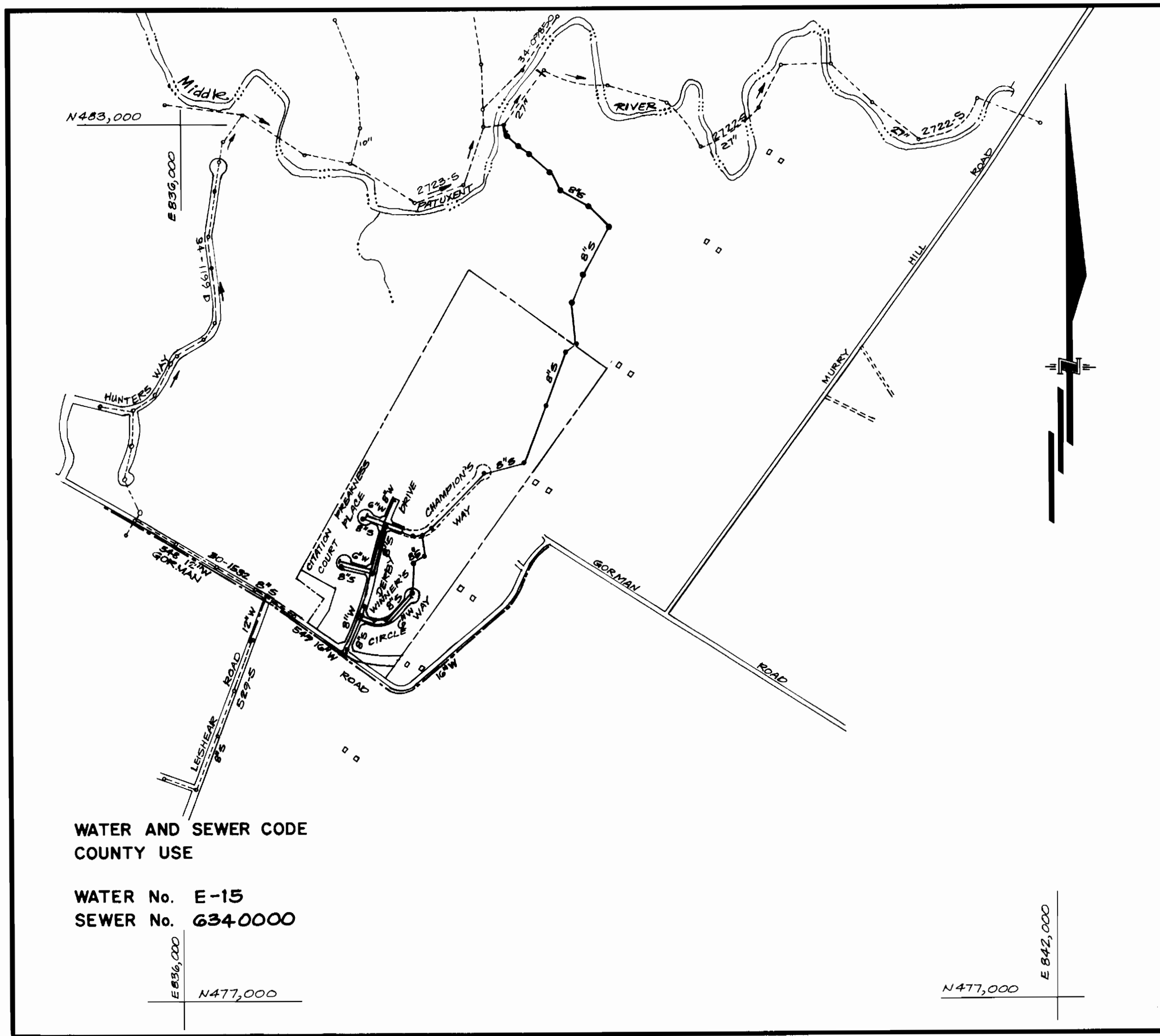


TYPE OF BUILDING	Single Family Detached
NUMBER OF UNITS	35
NUMBER OF SHC's	35
NUMBER OF WHC's	35
DRAINAGE AREA	Middle Patuxent River



WATER AND SEWER CODE  
COUNTY USE

WATER No. E-15  
SEWER No. 634.0000

VICINITY MAP  
SCALE: 1" = 600'

**CONTRACT NO. 34-1685-D**

**HUNTERS CREEK FARM**

**SECTION I AREA I**

**HOWARD COUNTY, MARYLAND**

**DEPARTMENT OF PUBLIC WORKS**

Sediment Control Measures will be implemented in accordance with Article No. 15 of the Specifications with Road Construction Plan F.88-90 ; Drawings 7# & Sediment & Erosion Control and this plan.

REVIEWED FOR HOWARD SOIL CONSERVATION DISTRICT AND MEETS TECHNICAL REQUIREMENT

*[Signature]* 5-6-88  
SIGNATURE DATE

U.S. SOIL CONSERVATION SERVICE

THIS DEVELOPMENT PLAN IS APPROVED FOR SOIL EROSION AND SEDIMENT CONTROL BY THE HOWARD SOIL CONSERVATION DISTRICT.

APPROVED:  
*[Signature]* 5/6/88  
HOWARD S.C.D. DATE

- GENERAL NOTES**
- Approximate locations of existing mains are shown. The contractor shall take all necessary precautions to protect existing mains and services and maintain uninterrupted supply. Any damage incurred shall be repaired immediately to the satisfaction of the Engineer, at the contractor's expense.
  - All horizontal controls are based on Maryland State Coordinates.
  - All vertical controls are based on U.S.G.S. Datum.
  - All pipe elevations shown are invert elevations.
  - Clear all utilities by a minimum of 6". Clear all poles by 2'-0" minimum or tunnel as required. Any cost incurred by the contractor for tunneling or bracing at poles shall be included in unit prices bid for construction of the main.
  - For details not shown on the drawings, use Howard County Standard Details.
  - For materials and construction methods, use Howard County Standard Specifications & Howard County Design Manual, Volume IV. The Contractor shall have a copy of Volume IV on the job.
  - Contractor shall locate existing utilities a minimum of two (2) weeks in advance of construction operations in the vicinity of proposed utilities, at his own expense.
  - Contractor shall notify the following utilities or agencies at least five (5) working days before starting work shown on these plans.
 

State Highway Administration	531-5533	Baltimore Gas & Electric Company	
"Miss Utility"	1-559-0100	Contractor Services	561-2585
Chesapeake & Potomac (C&P)		Underground Damage Control	234-5621
Telephone Company	725-9976	Trouble-shooting	298-9013
Colonial Pipeline Company	795-1390	Bureau of Utilities, Howard County	992-2366
  - Trees are to be protected from damage to maximum extent. Trees located within the construction strip are not to be removed or damaged by the contractor.
  - Contractor shall remove trees, stumps and roots along line of excavation as directed by the Engineer. Payment for such removal shall be included in the unit price bid for construction of the main.
  - Place regulation "Men Working" and warning signs as required to comply with Maryland State Highway Administration Manual of Traffic Control for Highway Construction and Maintenance Operations.
  - All water mains to be D.I.P., Class 52 Only.
  - Top of all water mains to have a minimum of 3'-1/2' cover unless otherwise noted.
  - Valves adjacent to tees shall be strapped to tees.
  - Block all fittings with concrete.
  - Bury line elevations on fire hydrants shall be set to the elevations shown on the drawings. All fire hydrants shall be strapped and buttressed with concrete in accordance with standard details. Soil around the fire hydrant to be compacted in accordance with Sections 10.03 and 10.08 of the Standard Specifications.
  - All water house connections shall be for an inside meter setting.
  - The contractor shall not operate any water main valves on the existing system.
  - For all Copper Water House Connections, utilize flared type fittings only.
  - All sewer mains shall be CSPX, VCPX, R.C.S.P, PVC or ACP - Class 2400 unless otherwise noted.
  - The contractor shall provide a joint in all sewer mains within 2'-0" of exterior manhole wall.
  - All manholes shall be 4'-0" inside diameter, unless otherwise noted.
  - 12" and 16" manhole wall thicknesses shown on profiles pertain to brick manholes only.
  - Manholes designated W.T. in plan and profile shall have watertight frames and covers. (See Standard Detail G.552) Where watertight manhole frame and cover is used, set top of frame 1'-6" above existing grade. Where frames are to be set above grade, use detail on sheet 6 for grading around manhole.
  - House(s) with the symbol "CNS" indicates that cellar cannot be served.
  - Water main and water house connection lines must have a minimum of one foot separation from either sanitary sewer or sewer house connections as they cross. Except at crossings, water and sewer lines shall have a minimum horizontal separation of 10'.
  - All D.I.P. Fittings shall be in accordance with A.W.W.A. specification C-153 ductile iron compact fittings, 3-inch through 12-inch for water and other liquids.

QUANTITIES			
ITEM	ESTIMATED	AS-BUILT	MATERIAL / SUPPLIER
8" S	2339 L.F.	2339 L.F.	American
8" W	1,457 L.F.	1,460 L.F.	Griffin Pipe Products
6" W	691 L.F.	691 L.F.	" "
4" Dia. MH	21 EA.	32 EA.	ATLANTIC CONCRETE PRODUCTS
F.H.	4 EA.	4 EA.	M.H. Kennedy
8" V	5 EA.	5 EA.	" "
6" V (Excl. F.H.V.)	2 EA.	2 EA.	" "
6" S.H.C.	1,229 L.F.	1,229 L.F.	American
1" W.H.C.	362 L.F.	362 L.F.	Cambridge Lee
3/4" W.H.C.	510 L.F.	510 L.F.	" "
16" x 8" T.S. & V.	1 EA.	1 EA.	M.H. Kennedy
3" BLOWOFF	1 EA.	1 EA.	" "
8" D.I.P. SEWER	3504 L.F.	3504 L.F.	Griffin Pipe Products

DEPARTMENT OF PUBLIC WORKS  
HOWARD COUNTY, MARYLAND

*[Signature]* 5-4-88  
DIRECTOR OF PUBLIC WORKS DATE

*[Signature]* 5/4/88  
CHIEF, BUREAU OF UTILITIES DATE

*[Signature]* 5/4/88  
CHIEF, BUREAU OF ENGINEERING DATE

*[Signature]* 5/4/88  
CHIEF, LAND DEVELOPMENT DIV. DATE

**GW** GUTSCHICK LITTLE & WEBER, P.A.  
ENGINEERS, PLANNERS, SURVEYORS

3909 NATIONAL DRIVE, SUITE 250 BURTONTOWNE OFFICE PARK  
BURTONTOWNE, MD. 20866  
(301) 421-4024



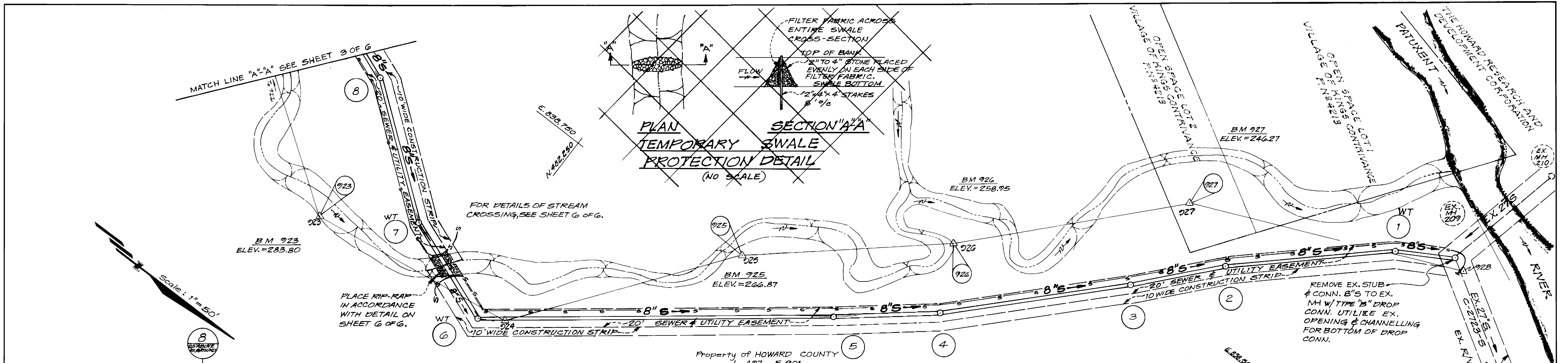
DES: R.R.S.  
DRN: R.R.S.  
CHK: C.K.G.  
DATE: APRIL 1988

BY NO. REVISION DATE: 600' SCALE MAP NO. 37/42 BLOCK NO.

TITLE SHEET

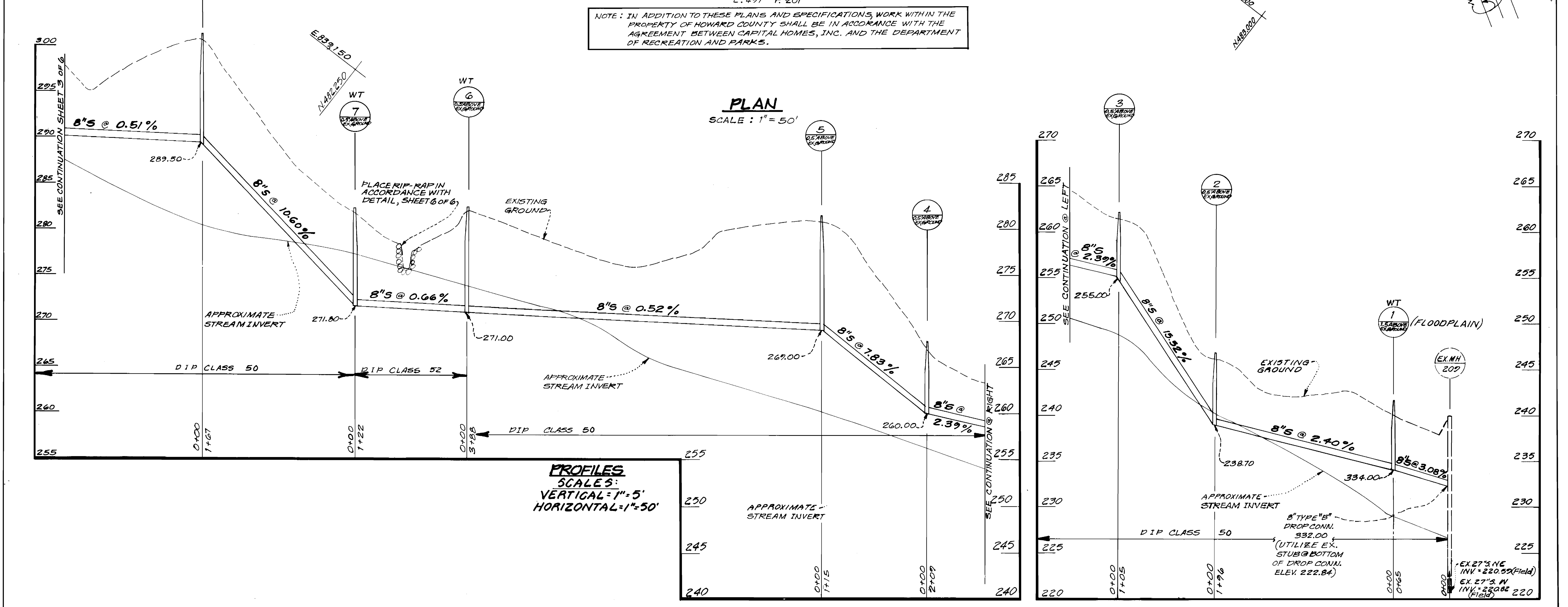
HUNTERS CREEK FARM  
SECTION I AREA I  
LOTS 1 THRU 38  
6TH ELECTION DISTRICT  
CONTRACT NO. 34-1685-D

SCALE AS SHOWN  
SHEET 1 OF 6



Property of HOWARD COUNTY  
L. 497 F. 201

NOTE: IN ADDITION TO THESE PLANS AND SPECIFICATIONS, WORK WITHIN THE PROPERTY OF HOWARD COUNTY SHALL BE IN ACCORDANCE WITH THE AGREEMENT BETWEEN CAPITAL HOMES, INC. AND THE DEPARTMENT OF RECREATION AND PARKS.



DEPARTMENT OF PUBLIC WORKS  
HOWARD COUNTY, MARYLAND

*James J. ...* 5/16/88  
DIRECTOR OF PUBLIC WORKS DATE

*William ...* 5/10/88  
CHIEF, BUREAU OF ENGINEERING DATE

*Robert ...* 5/4/88  
CHIEF, BUREAU OF UTILITIES DATE

*Walter ...* 5/9/88  
CHIEF, LAND DEVELOPMENT DIV. DATE

**GW** GUTSCHICK LITTLE & WEBER, P.A.  
ENGINEERS, PLANNERS, SURVEYORS

3909 NATIONAL DRIVE SUITE 250 BURTONTOWNE OFFICE PARK  
BURTONTOWNE, MD. 20886  
(301) 421-4024



DES: C.K.G.			
DRN: R.R.B.			
CHK: C.K.G.			
DATE: APRIL 1988	BY: NO.	REVISION	DATE
		1 CHANGED DIP CLASS/LOWERED RIMS MH 477/1/88	

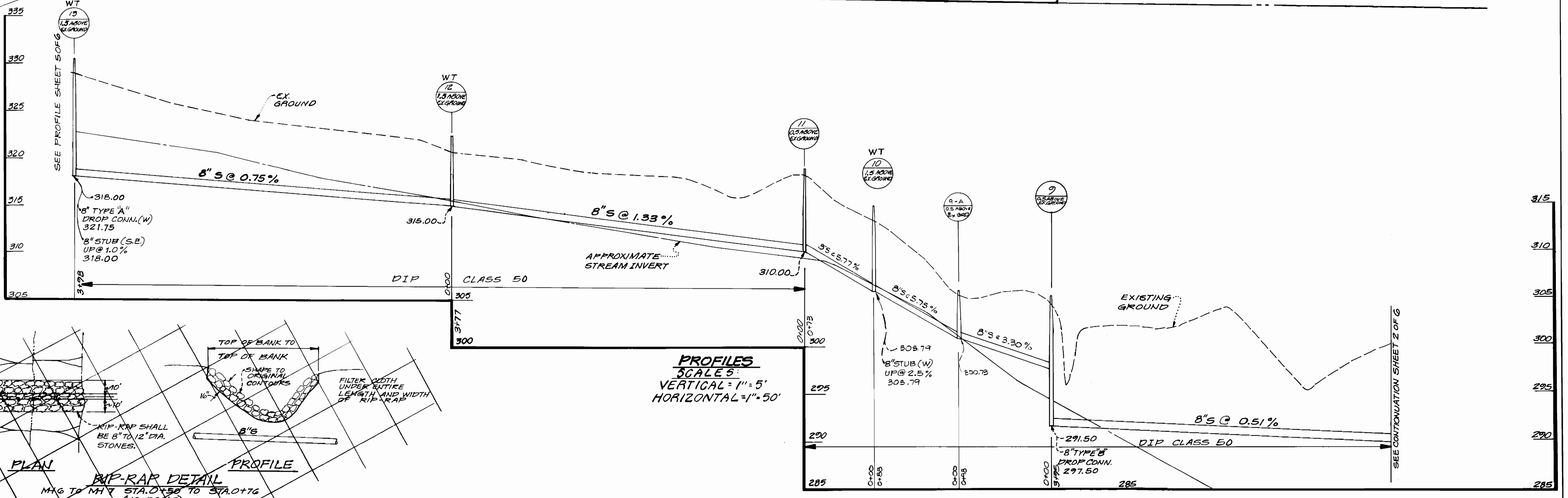
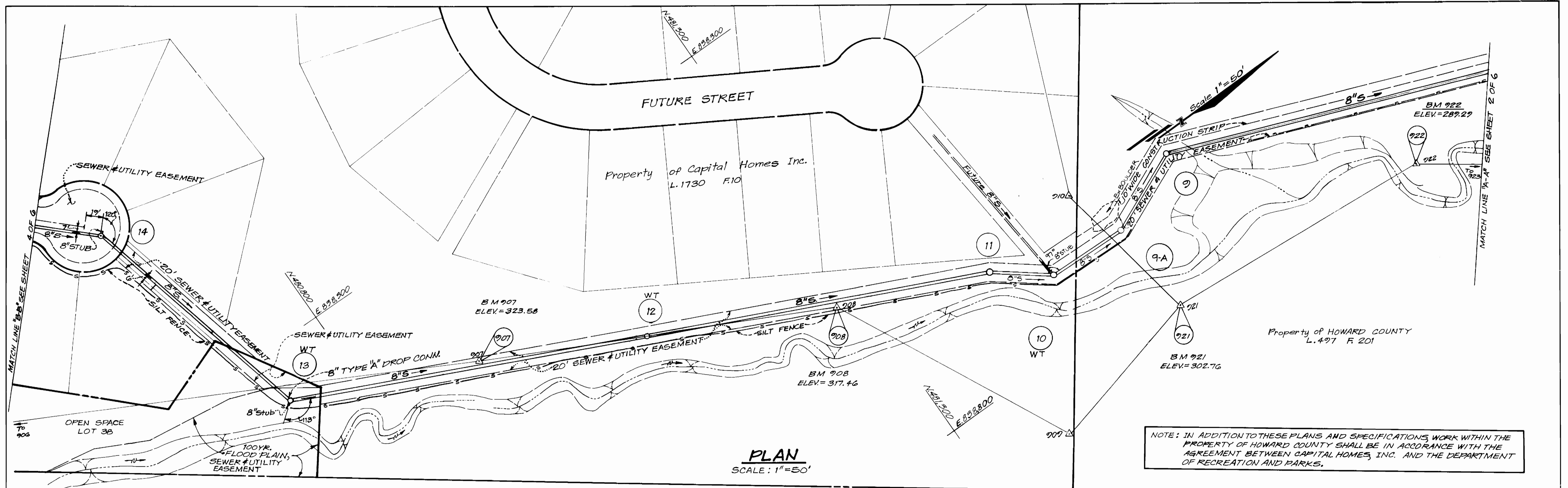
OUTFALL SEWER  
PLAN & PROFILE

600' SCALE MAP NO. \_\_\_\_\_ BLOCK NO. \_\_\_\_\_

HUNTER'S GREEK FARM  
SECTION 1 AREA 1  
LOTS 1 THRU 38  
6TH ELECTION DISTRICT  
CONTRACT NO. 34-1685-D

SCALE AS SHOWN

SHEET 2 OF 6



DEPARTMENT OF PUBLIC WORKS  
HOWARD COUNTY, MARYLAND

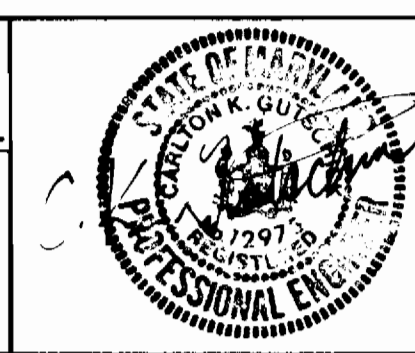
Director of Public Works: *[Signature]* 5/10/88  
Date: 5-9-88

Chief, Bureau of Engineering: *[Signature]* 5/10/88  
Date: 5-9-88

Chief, Land Development Div.: *[Signature]* 5/10/88  
Date: 5-9-88

**GLW** GUTSCHICK LITTLE & WEBER, P.A.  
ENGINEERS, PLANNERS, SURVEYORS

3908 NATIONAL DRIVE SUITE 250 BURTONTOWNE OFFICE PARK  
BURTONTOWNE, MD 20886  
(301) 421-4024



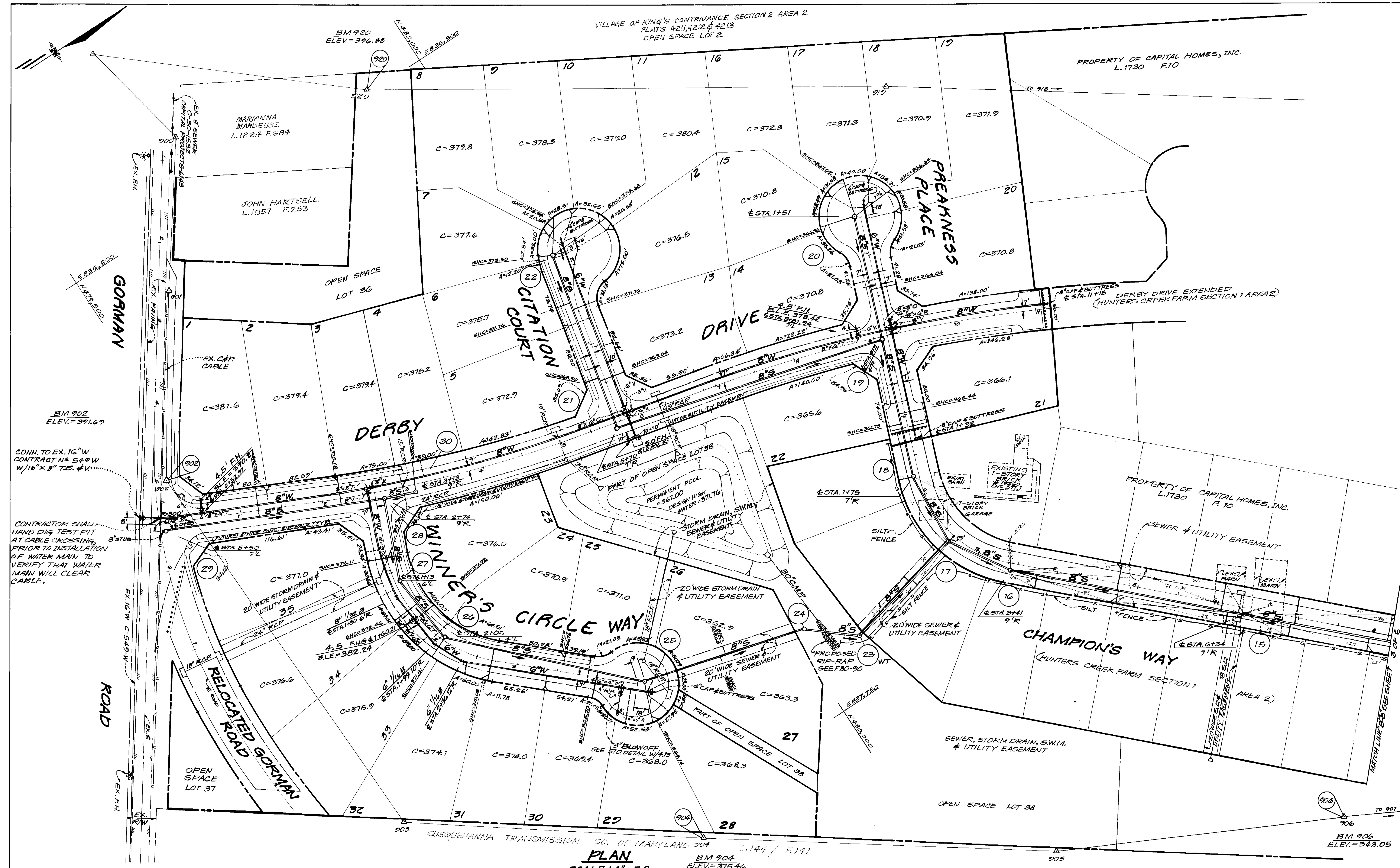
DES: C.K.G.			
DRN: R.R.E.			
CHK: C.K.G.	BPM 2	REVISE ALIGNMENT BETWEEN M+9+M+11, ADD M+9A	5/10/88
DATE: APRIL 1988	BN 1	CHANGED DIP CLASS	7/1/88
BY NO.		REVISION	DATE

OUTFALL SEWER  
PLAN & PROFILE

600' SCALE MAP NO. \_\_\_\_\_ BLOCK NO. \_\_\_\_\_

HUNTERS CREEK FARM  
SECTION 1 AREA 1  
LOTS 1 THRU 38  
6TH ELECTION DISTRICT  
CONTRACT NO. 34-1685-D

SCALE AS SHOWN  
SHEET 3 OF 6



VILLAGE OF KING'S CONTRIVANCE SECTION 2 AREA 2  
 PLATS 4211, 4212 & 4213  
 OPEN SPACE LOT 2

PROPERTY OF CAPITAL HOMES, INC.  
 L. 1730 F. 10

PROPERTY OF CAPITAL HOMES, INC.  
 L. 1730 F. 10

CHAMPION'S WAY  
 HUNTERS CREEK FARM SECTION 1  
 AREA 2

PLAN  
 SCALE: 1"=50  
 BM 904 ELEV.=375.46

DEPARTMENT OF PUBLIC WORKS  
 HOWARD COUNTY, MARYLAND  
 Director of Public Works: *5/10/88*  
 Chief, Bureau of Engineering: *5/10/88*  
 Chief, Bureau of Utilities: *5/9/88*  
 Chief, Land Development Div.: *5/10/88*

**GW** GUTSCHICK LITTLE & WEBER, P.A.  
 ENGINEERS, PLANNERS, SURVEYORS  
 3909 NATIONAL DRIVE SUITE 230 BURTONTOWNE OFFICE PARK  
 BURTONTOWNE, MD. 20884  
 (301) 421-4024

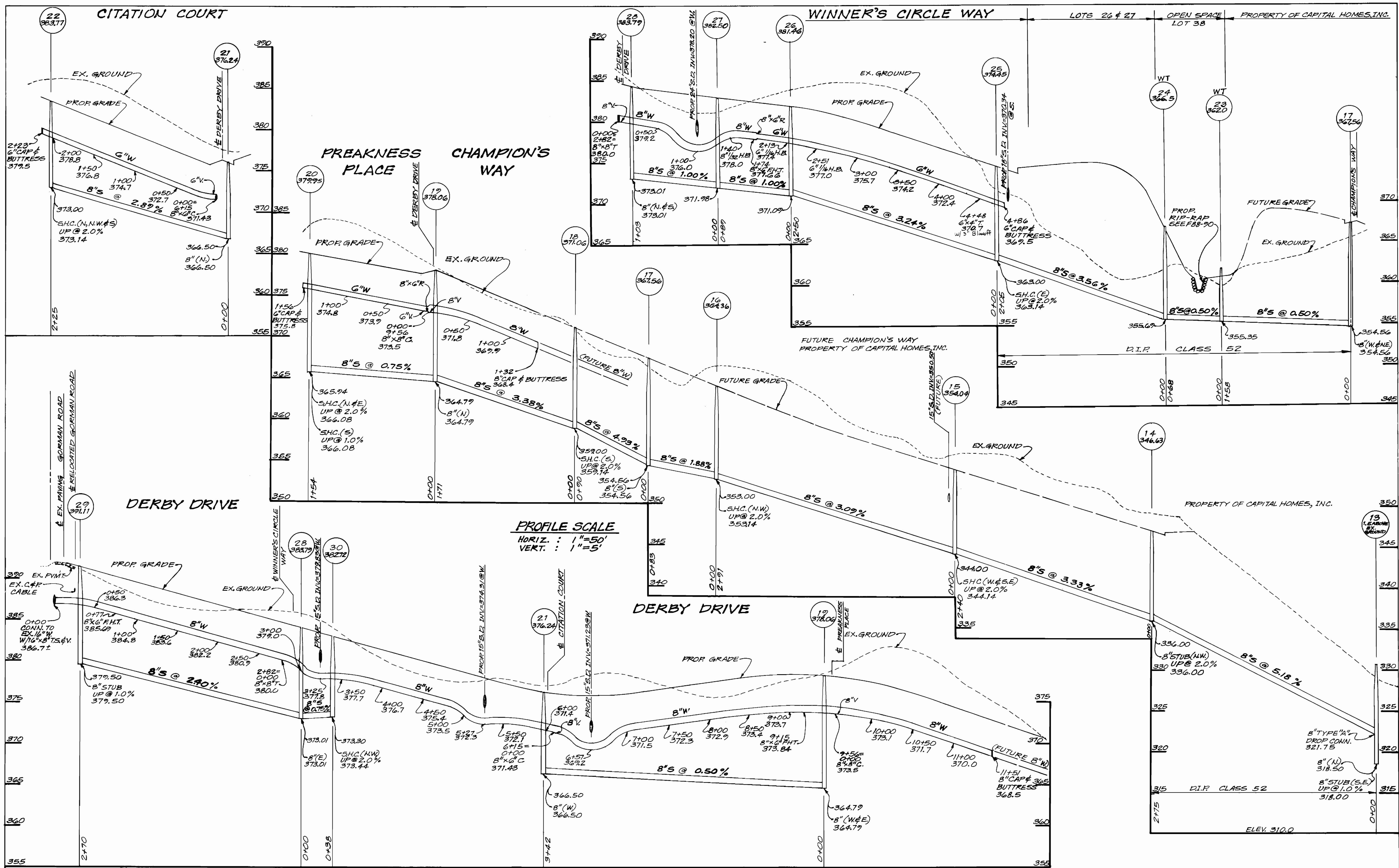


DES: R.R.S.	DATE: APRIL 1988
DRN: R.R.S.	BY: NO.
CHK: A.K.A.	REVISION
DATE: APRIL 1988	DATE: 600' SCALE MAP NO. _____

PLAN WATER & SEWER MAINS  
 REVISION: REV. P. FOR FUTURE LOTS 62-60 + LOC OF SMC  
 DATE: 600' SCALE MAP NO. \_\_\_\_\_ BLOCK NO. \_\_\_\_\_

HUNTERS CREEK FARM SECTION 1 AREA 1  
 LOTS 1 THRU 38  
 6TH ELECTION DISTRICT  
 CONTRACT NO. 34-1685-D

SCALE AS SHOWN  
 SHEET 4 OF 6



DEPARTMENT OF PUBLIC WORKS  
HOWARD COUNTY, MARYLAND

*James J. ...* 5/10/88  
DIRECTOR OF PUBLIC WORKS DATE

*Robert ...* 5-1-88  
CHIEF, BUREAU OF UTILITIES DATE

**GW** GUTSCHICK LITTLE & WEBER, P.A.  
ENGINEERS, PLANNERS, SURVEYORS

3908 NATIONAL DRIVE, SUITE 250 BURTONTVILLE OFFICE PARK  
BURTONTVILLE, MD 20986  
13011 421-4024



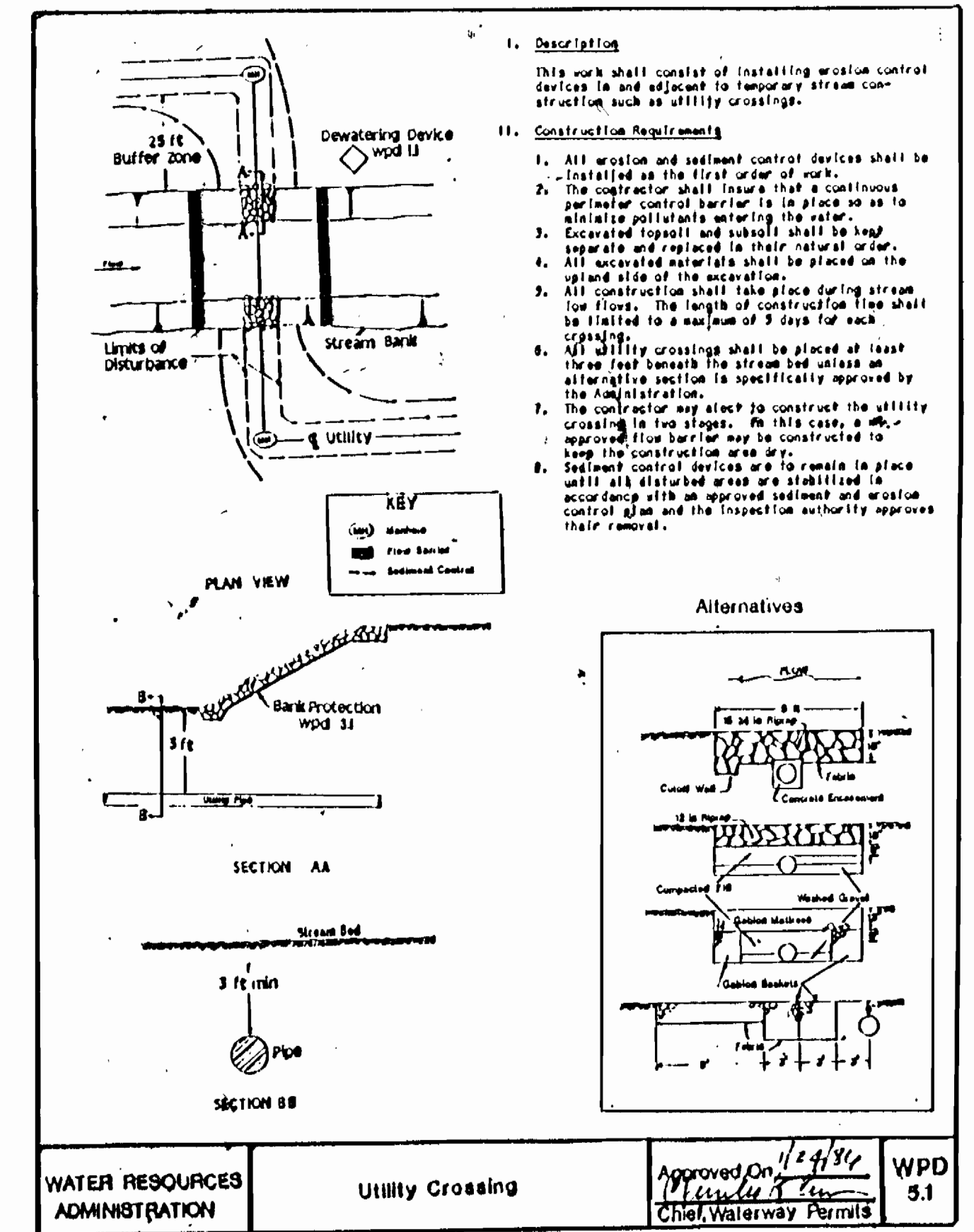
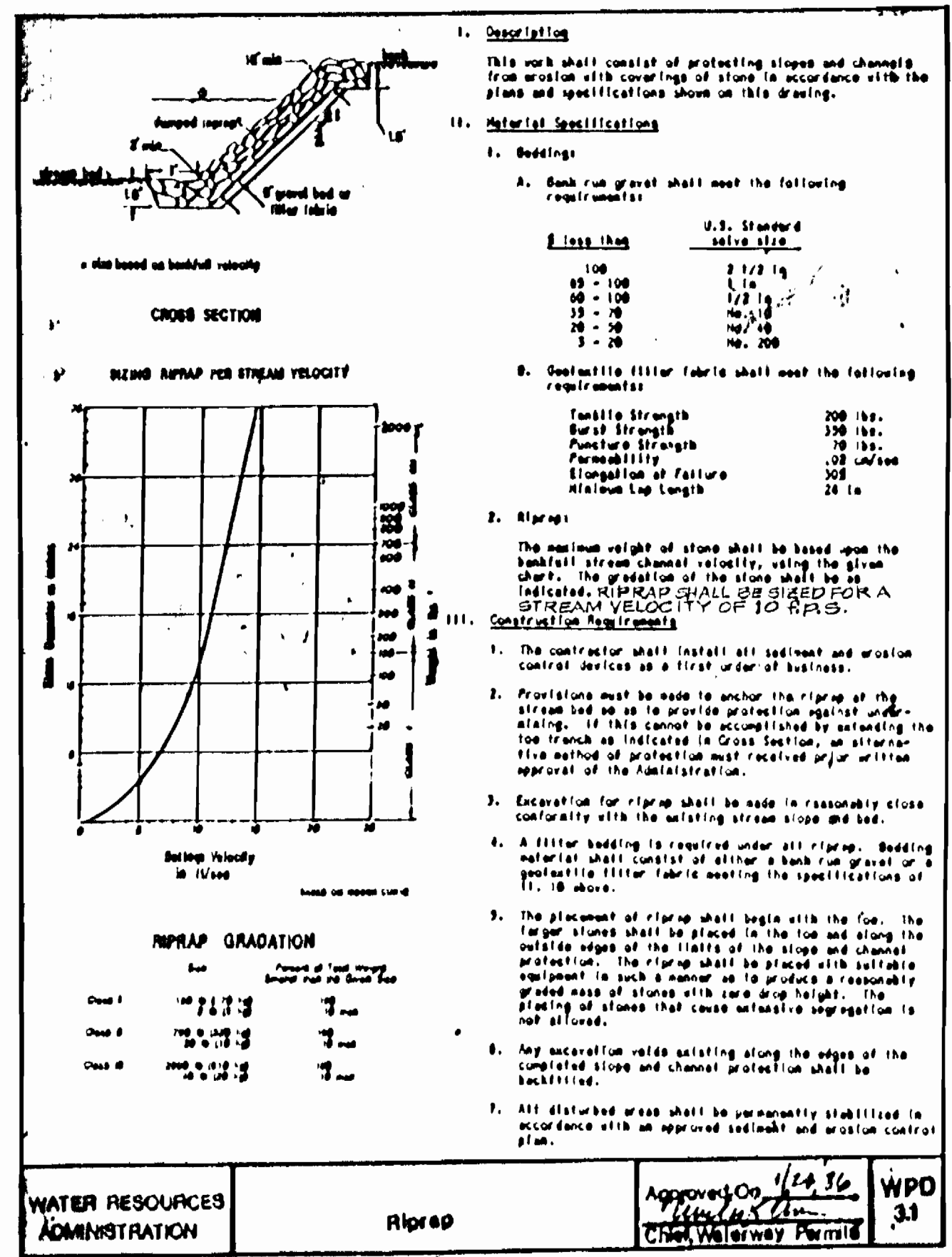
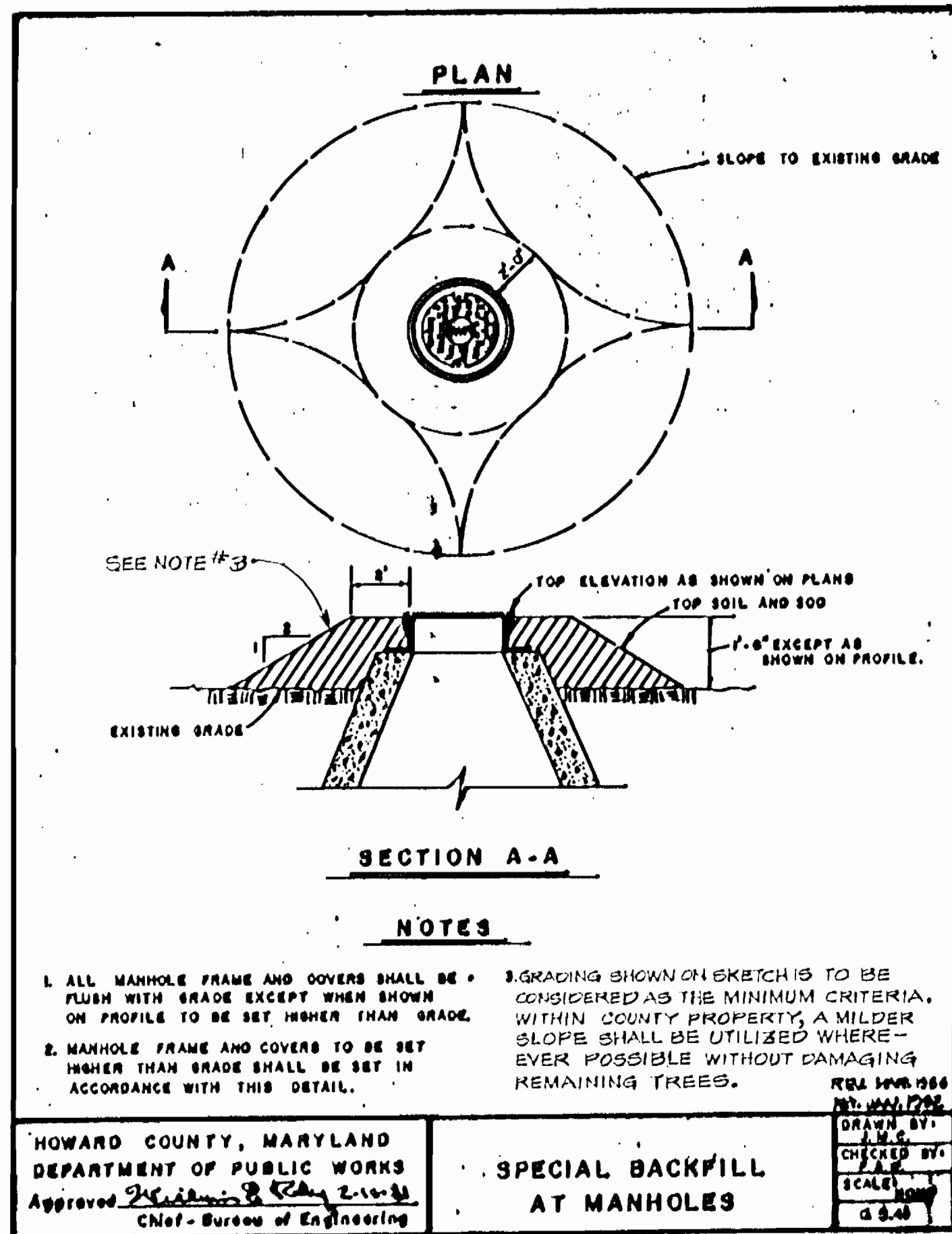
DES:	R.R.S.				
DRN:	R.R.S.				
CHK:	C.K.G.				
DATE:	APRIL 1988				
BY:	BN 1	NO.	LOWERED FUT. GRADE, CHAMPION'S WAY	7/1/88	
REVISION:					

PROFILE WATER & SEWER MAINS

600' SCALE MAP NO. \_\_\_\_\_ BLOCK NO. \_\_\_\_\_

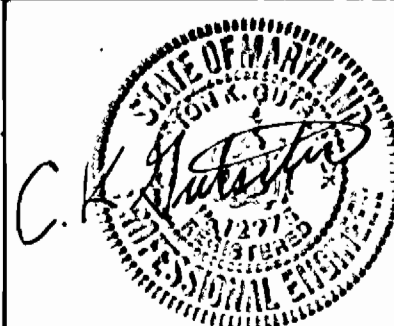
HUNTERS GREEK FARM  
SECTION 1 AREA 1  
LOTS 1 THRU 38  
6TH ELECTION DISTRICT  
CONTRACT NO. 34-1685-D

SCALE AS SHOWN  
SHEET 5 OF 6



DEPARTMENT OF PUBLIC WORKS  
HOWARD COUNTY, MARYLAND

**G&W** GUTSCHICK LITTLE & WEBER, P.A.  
ENGINEERS, PLANNERS, SURVEYORS



NO.	BY	DATE	REVISION
1	CKG		
2	KRB		
3	CKG		
4	APRIL 1988		

OUTFALL SEWER  
SEDIMENT CONTROL DETAILS

HUNTERS CREEK FARM  
SECTION 1 AREA 1  
LOTS 1 THRU 38  
6TH ELECTION DISTRICT  
CONTRACT NO. 34-1685D

SCALE  
AS  
SHOWN

SHEET  
6 OF 6

**SEWER AS BUILT**

lot 1	Manhole # 29	120'
	8" Valve Winners Circle	108'
lot 2	Manhole # 28	70'
"	Manhole # 30	107'
lot 3	"	98'
"	Manhole # 28	67'
lot 4	Manhole # 28	57'
"	Manhole # 21	254'
lot 5	Manhole # 21	68'
"	Manhole # 22	162'
lot 6	"	53'
"	Manhole # 21	165'
lot 7	Manhole # 21	232'
lot 8	"	"
lot 9	Manhole # 21	270'
"	Manhole # 22	45'
lot 10	"	69'
"	Manhole # 21	265'
lot 11	"	258'
"	Manhole # 22	78'
lot 12	"	77'
"	Manhole # 21	158'
lot 13	"	70'
"	Manhole # 22	168'
lot 14	Manhole # 19	147'
"	Manhole # 20	46'
lot 15	"	44'
"	Manhole # 19	156'
lot 16	"	197'
lot 17	Manhole # 19	204'
lot 18	"	185'
"	Manhole # 20	50'
lot 19	"	55'
"	Manhole # 19	178'
lot 20	"	71'
"	Manhole # 20	92'
lot 21	Manhole # 19	NO DISTANCE
"	Manhole # 18	NO DISTANCE
lot 22	"	67'
"	Manhole # 19	108'
lot 23	Manhole # 26	43'
"	Manhole # 27	50'
lot 24	Manhole # 26	140'
"	Manhole # 25	106'
lot 25	"	103'
"	Manhole # 26	148'
lot 26	Manhole # 25	105'
"	Manhole # 24	109'
lot 27	"	110'
"	Manhole # 25	98'
lot # 28	"	48'
"	Manhole # 24	208'
lot 29	Manhole # 25	279'
"	Manhole # 25	521'
lot 30	"	67'
"	Manhole # 26	194'
lot 31	"	74'
"	Manhole # 25	181'
lot 32	"	200'
"	Manhole # 26	65'
lot 33	"	29'
"	Manhole # 27	97'
lot 34	"	48'
"	Manhole # 26	63'
lot 35	Manhole # 27	51'
"	Manhole # 28	82'

\* SEWER location for CHAMPION'S WAY AS-BUILTS: SEE AS-BUILT SHEET 4 of 6. Non-Numbered lots Hunters Creek Section 1 AREA 2. (M.W.)

**WATER AS BUILT**

77' in location Gorman Road	Manhole # 29	33'
"	Fire Hydrant Derby Drive STA 8+80.2	64'
lot 1	"	78'
"	Manhole # 29	130'
lot 2	"	140'
"	Fire Hydrant Derby Drive STA 8+80.2	86'
lot 3	Manhole # 28	55'
"	Manhole # 30	50'
lot 4	"	38'
"	Manhole # 28	40'
lot 5	Manhole # 21	136'
"	Fire Hydrant Derby Drive STA 8+75.2	152'
lot 6	Manhole # 22	89'
"	Storm Drain Inlet (Left) Derby Drive	137'
lot 7	"	239'
"	Manhole # 22	32'
"	"	36'
lot 8	"	232'
"	Storm Drain Inlet (Left) Derby Drive STA 8+80.2	60'
lot 9	Manhole # 22	65'
lot 10	"	246'
lot 10	Storm Drain Inlet (Left) Derby Drive STA 8+80.2	243'
lot 11	"	216'
lot 12	"	208'
lot 11	Manhole # 22	80'
lot 12	"	82'
lot 13	"	130'
"	Manhole # 21	105'
"	8" Valve Derby Drive	32'
"	6" Valve " " " "	26'
"	6" Valve Citation Court	38'
8" Valve	Manhole # 21	30'
6" Valve Citation Court	"	28'
lot 14	NO DISTANCE	
lot 15	Fire Hydrant Derby Drive STA: 8+80.2	168'
lot 16	"	174'
lot 15	Manhole # 20	44'
lot 16	"	45'
lot 17	Fire Hydrant Derby Drive STA 8+80.2	189'
lot 18	"	185'
lot 17	Manhole # 20	52'
lot 18	"	50'
lot 19	"	60'
lot 19	Manhole # 19	164'
lot 20	"	158'
lot 20	Manhole # 20	58'
Fire Hydrant Derby Drive STA 8+80.2	8" Valve Derby Drive	48'
6" Valve Prentiss Place	Manhole # 19	25'
"	Fire Hydrant Derby Drive STA: 8+80.2	40'
8" Valve Derby Drive	Manhole # 19	20'
lot 21	"	115'
"	Manhole # 18	73'
lot 22	"	95'
"	Manhole # 19	78'
lot 23	Manhole # 27	75'
"	Manhole # 26	24'
lot 24	"	20'
"	Manhole # 27	81'
lot 25	Manhole # 25	74'
"	3" Blow-off Winners Circle Way	78'
lot 26	Manhole # 25	43'
lot 27	Storm Drain Manhole	30'
"	Manhole # 25	40'
"	3" Blow-off Winners Circle Way	85'
lot 28	Manhole # 25	45'
"	3" Blow-off Winners Circle Way	62'
"	"	15'
"	Manhole # 25	55'
lot 30	"	122'
"	3" Blow-off Winners Circle Way	83'
lot 31	"	92'
"	Manhole # 26	136'
lot 32	"	52'
"	Manhole # 27	138'
lot 33	"	82'
"	Manhole # 26	36'
"	"	50'
"	Manhole # 27	52'
lot 34	Fire Hydrant Winners Circle Way STA 1+60.2	46'
"	Manhole # 27	30'
lot 35	"	48'
"	Manhole # 28	70'

DEPARTMENT OF PUBLIC WORKS  
HOWARD COUNTY, MARYLAND

DIRECTOR OF PUBLIC WORKS DATE CHIEF, BUREAU OF ENGINEERING DATE

DES:

DRN:

CHK:

DATE:

BY NO. REVISION

SEWER & WATER AS BUILT

CONTRACT NO. 34 - 1685 - D

DATE 800' SCALE MAP NO. BLOCK NO.

HUNTERS CREEK FARM

SECTION 1 AREA 1

KATHY WILSON

02 - 03 - 89

SCALE AS SHOWN

SHEET 6 OF 69

ASBUILT 2-3-89