

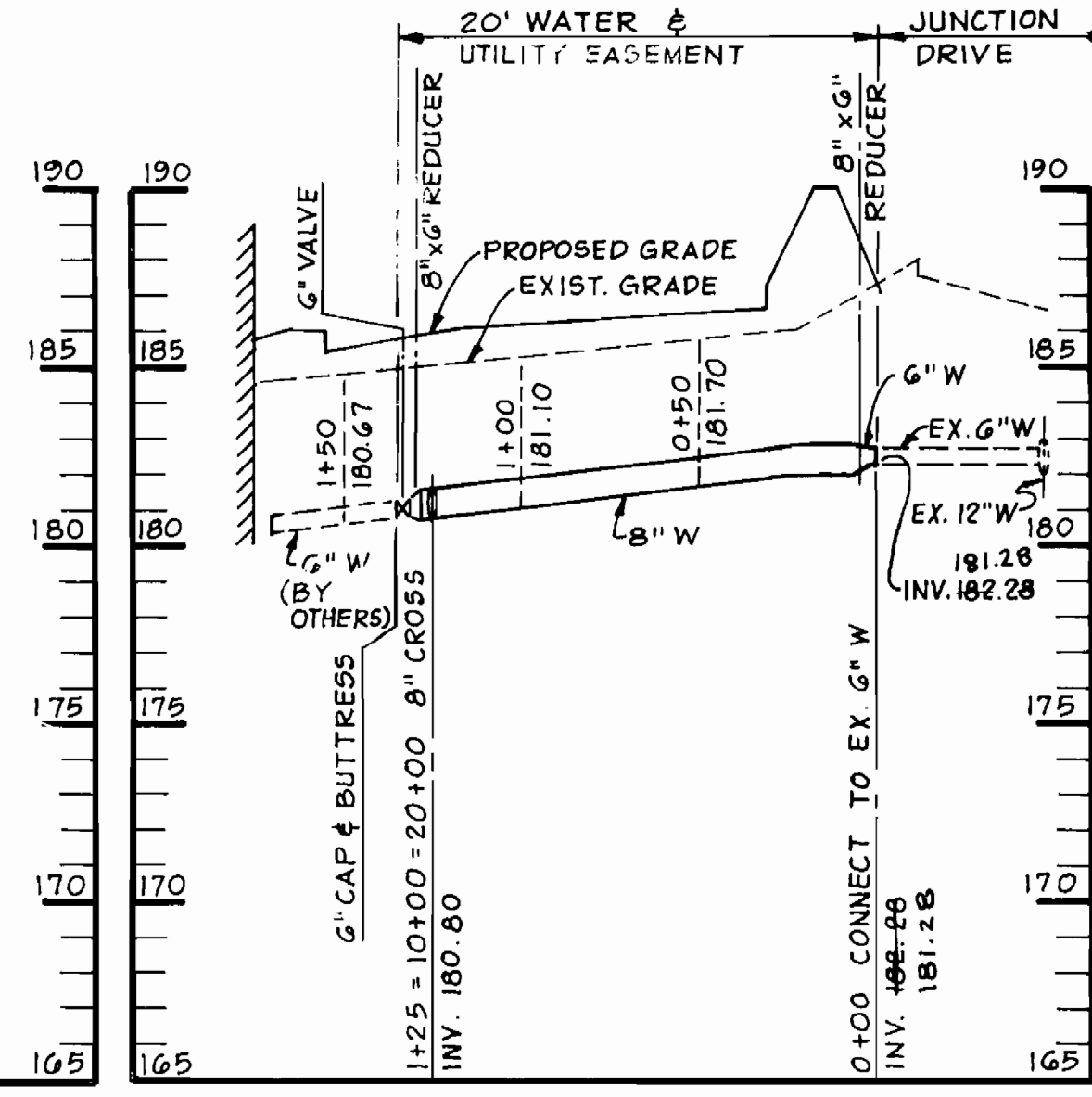
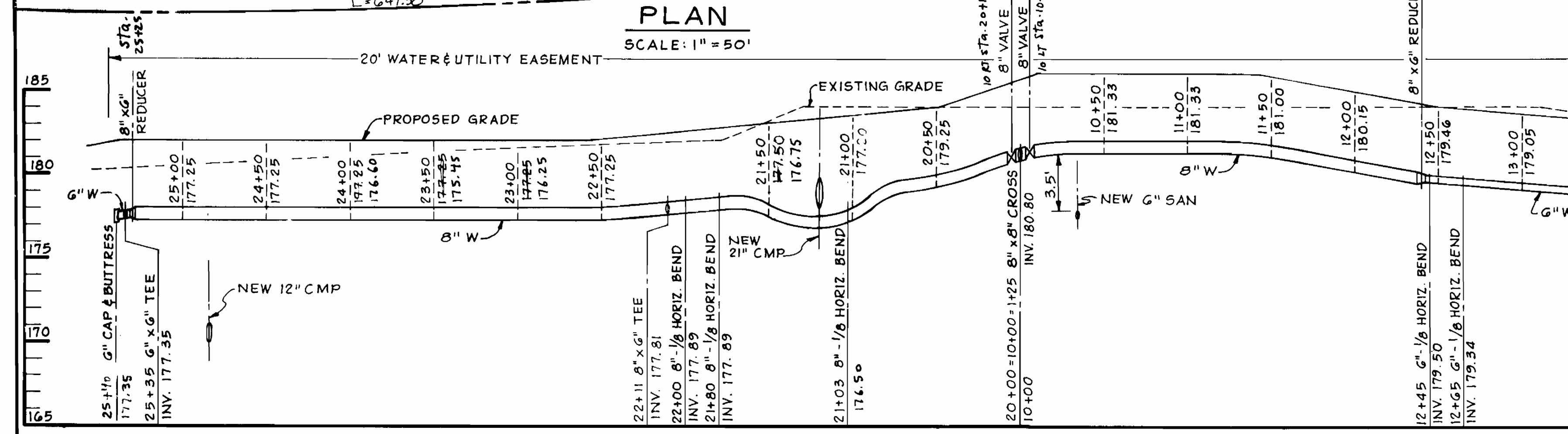
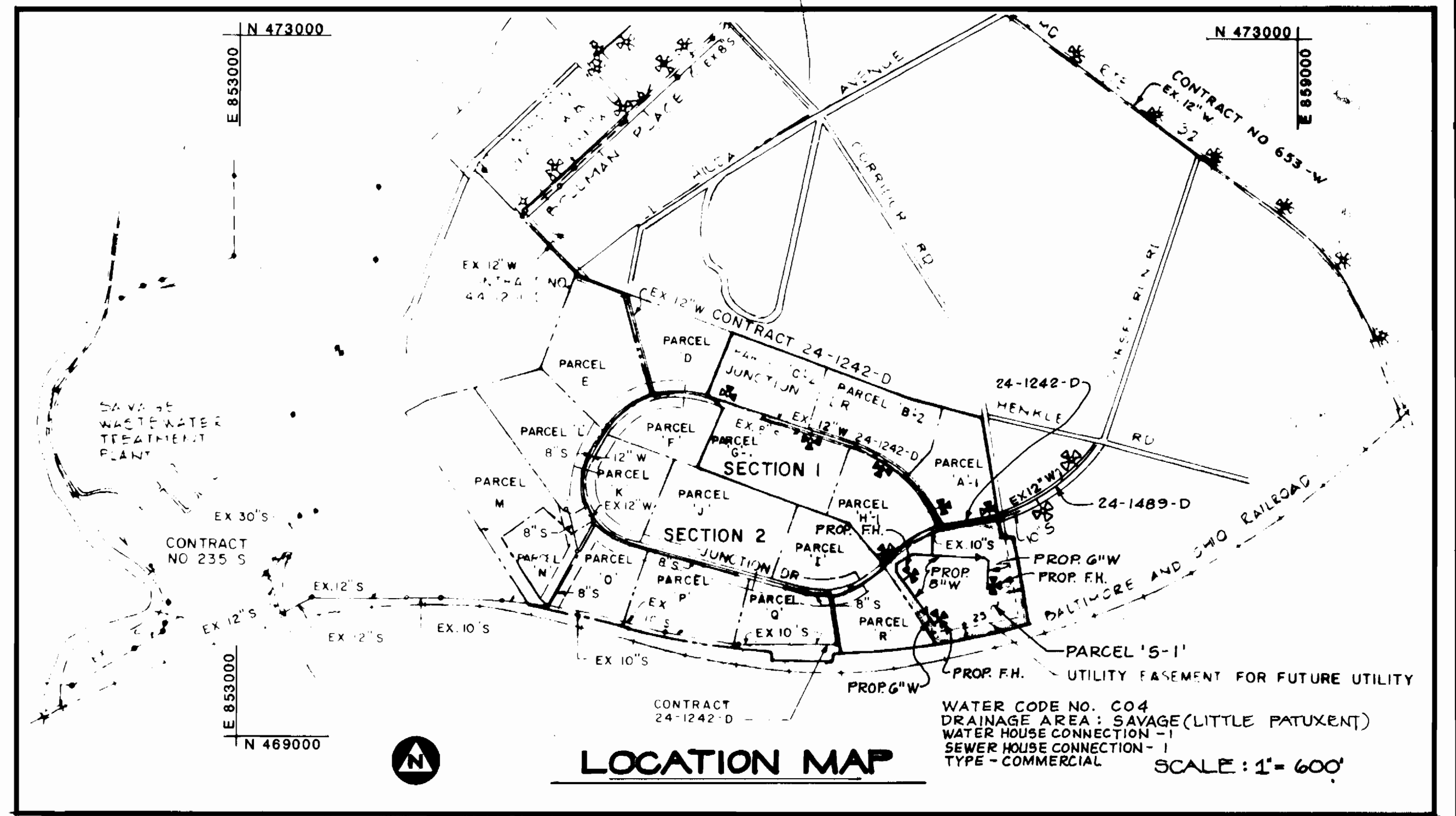
WATER MAIN NOTES

1. ALL WATER MAINS TO BE C.I.P. OR D.I.P. UNLESS OTHERWISE NOTED
2. TOP OF ALL WATER MAINS TO HAVE A MINIMUM OF 3/2 COVER UNLESS OTHERWISE NOTED
3. VALVES ADJACENT TO TEES SHALL BE STRAPPED TO TEES
4. BLOCK ALL FITTINGS WITH CONCRETE
5. BURY LINE ELEVATIONS ON FIRE HYDRANTS SHALL BE SET TO THE ELEVATIONS SHOWN ON THE DRAWINGS. ALL FIRE HYDRANTS SHALL BE STRAPPED AND BUTTRESSED WITH CONCRETE IN ACCORDANCE WITH STANDARD DETAILS. SOIL AROUND THE FIRE HYDRANT TO BE COMPACTED IN ACCORDANCE WITH SECTIONS 10.03 AND 10.08 OF THE STANDARD SPECIFICATIONS.
6. ALL WATER HOUSE CONNECTIONS SHALL BE FOR AN INSIDE METER SETTING
7. THE CONTRACTOR SHALL NOT OPERATE ANY WATER MAIN VALVES ON THE EXISTING SYSTEM.

GENERAL NOTES

1. APPROXIMATE LOCATION OF EXISTING MAINS ARE SHOWN. THE CONTRACTOR SHALL TAKE ALL NECESSARY PRECAUTIONS TO PROTECT EXISTING MAINS AND SERVICES AND MAINTAIN UNINTERRUPTED SUPPLY. ANY DAMAGE INCURRED SHALL BE REPAIRED IMMEDIATELY TO THE SATISFACTION OF THE ENGINEER, AT THE CONTRACTOR'S EXPENSE.
2. ALL HORIZONTAL CONTROLS ARE BASED ON MARYLAND STATE COORDINATES.
3. ALL VERTICAL CONTROLS ARE BASED ON U.S.G.S. DATUM.
4. ALL PIPE ELEVATIONS SHOWN ARE INVERT ELEVATIONS.
5. CLEAR ALL UTILITIES BY A MINIMUM OF 6'. CLEAR ALL POLES BY 2'-0" MINIMUM OR TUNNEL AS REQUIRED. ANY COST INCURRED TO THE CONTRACTOR FOR TUNNELING OR BRACING AT POLES SHALL BE INCLUDED IN UNIT PRICES BID FOR CONSTRUCTION OF THE MAIN.
6. FOR DETAILS NOT SHOWN ON THE DRAWINGS USE HOWARD COUNTY STANDARD DETAILS.
7. FOR MATERIALS AND CONSTRUCTION METHODS USE HOWARD COUNTY STANDARD SPECIFICATIONS.
8. CONTRACTOR SHALL LOCATE EXISTING UTILITIES A MINIMUM OF TWO (2) WEEKS IN ADVANCE OF CONSTRUCTION OPERATIONS IN THE VICINITY OF PROPOSED UTILITIES AT HIS OWN EXPENSE.
9. CONTRACTOR SHALL NOTIFY THE FOLLOWING UTILITIES OR AGENCIES AT LEAST FIVE (5) DAYS BEFORE STARTING WORK SHOWN ON THESE PLANS:
 - STATE HIGHWAY ADMINISTRATION - 531-5533
 - BALTIMORE GAS AND ELECTRIC COMPANY - UNDERGROUND ELECTRIC DISTRIBUTION CUSTOMER SERVICE - 685-0123
 - BALTIMORE GAS AND ELECTRIC COMPANY - UNDERGROUND GAS DISTRIBUTION CUSTOMER SERVICE - 685-0123
 - ENGINEERING - "DAMAGE CONTROL" - 234-5621
 - "MISS UTILITY" - 1-800-257-7777
 - CHESAPEAKE & POTOMAC (C&P) TELEPHONE COMPANY - 725-3076
 - AMERICAN TELEPHONE AND TELEGRAPH - CABLE LOCATION DIVISION - 303-3553
 - COLONIAL PIPELINE COMPANY - 705-1000
 - BUREAU OF UTILITIES HOWARD COUNTY - 502-2366
10. TREES ARE TO BE PROTECTED FROM DAMAGE TO THE MAXIMUM EXTENT. TREES LOCATED WITHIN THE CONSTRUCTION STRIP ARE NOT TO BE REMOVED OR DAMAGED BY THE CONTRACTOR.
11. CONTRACTOR SHALL REMOVE TREES, STUMPS AND ROOTS ALONG LINE OF EXCAVATION AS DIRECTED BY THE ENGINEER. PAYMENT FOR SUCH REMOVAL SHALL BE INCLUDED IN THE UNIT PRICE BID FOR CONSTRUCTION OF THE MAIN.
12. PLACE REGULATION "MEN WORKING" AND WARNING SIGNS AS REQUIRED TO COMPLY WITH MARYLAND STATE HIGHWAY ADMINISTRATION MANUAL OF TRAFFIC CONTROL FOR HIGHWAY CONSTRUCTION AND MAINTENANCE OPERATIONS.

ITEM	QUANTITIES	AS BUILT	MAT'L SUPPLIES
8" WATER MAIN	200 L.F.	870	D.I.P. c.s.s. 12" dia. 12' pipe
8" WATER MAIN	125 L.F.	200	"
8" VALVE	2 EA.	2	AWWA C57 US Std
8" VALVE	3 EA.	3	Melroe, US Std
8" x 8" CROSS	1 EA.	1	D.I.P. US Std
8" x 8" TEE	1 EA.	1	"
8" x 8" TEE	2 EA.	2	"
8" - 1/2 BEND	3 EA.	3	"
8" - 1/2 BEND	2 EA.	2	"
8" x 8" REDUCER	4 EA.	4	"
8" FIRE HYDRANT	3 EA.	3	AWWA C502, US Std
8" CAP & BUTTRESS	3 EA.	3	"



SEDIMENT CONTROL MEASURES SECTION 210 WILL BE IMPLEMENTED AND IN ACCORDANCE WITH ARTICLE 15 OF THE SPECIFICATIONS AND SDP 87-238

THIS DEVELOPMENT PLAN IS APPROVED FOR SOIL EROSION AND SEDIMENT CONTROL BY THE HOWARD COUNTY SOIL CONSERVATION DISTRICT.

REVIEWED FOR HOWARD COUNTY SOIL CONSERVATION DISTRICT AND MEETS TECHNICAL REQUIREMENTS.

APPROVED: [Signature] DATE: 8/18/87
HOWARD COUNTY SOIL CONSERVATION DISTRICT

APPROVED: [Signature] DATE: 8/18/87
U.S. SOIL CONSERVATION SERVICE

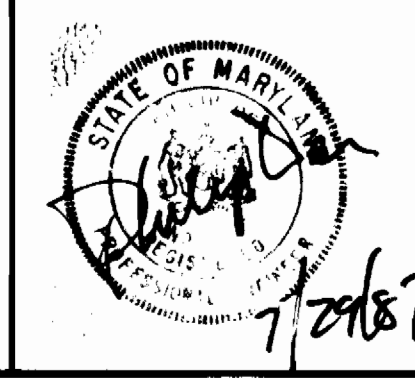
DEPARTMENT OF PUBLIC WORKS
HOWARD COUNTY, MARYLAND

DATE: 8/18/87

CHIEF, BUREAU OF ENGINEERING

CHIEF, LAND DEVELOPMENT DIVISION

WHITNEY BAILEY CONSULTING ENGINEERS
1850 YORK ROAD
TIMONIUM, MARYLAND 21093
PHONE: (301) 252-6060



DESIGNED: BCL	NO.	BY	REVISIONS	DATE
DRAWN: GSB				
CHECKED: PD				
DATE: 1-29-87				

WATER MAIN EXTENSION
PLAN AND PROFILE
CONTRACT 44-1677-D

600' SCALE MAP NO. 48, BLOCK NO. 19

JUNCTION INDUSTRIAL PARK SECTION 2
PARCEL 'S-1'
ELECTION DISTRICT GUILFORD NO. 6

SCALE - AS SHOWN

SHEET 1 OF 1