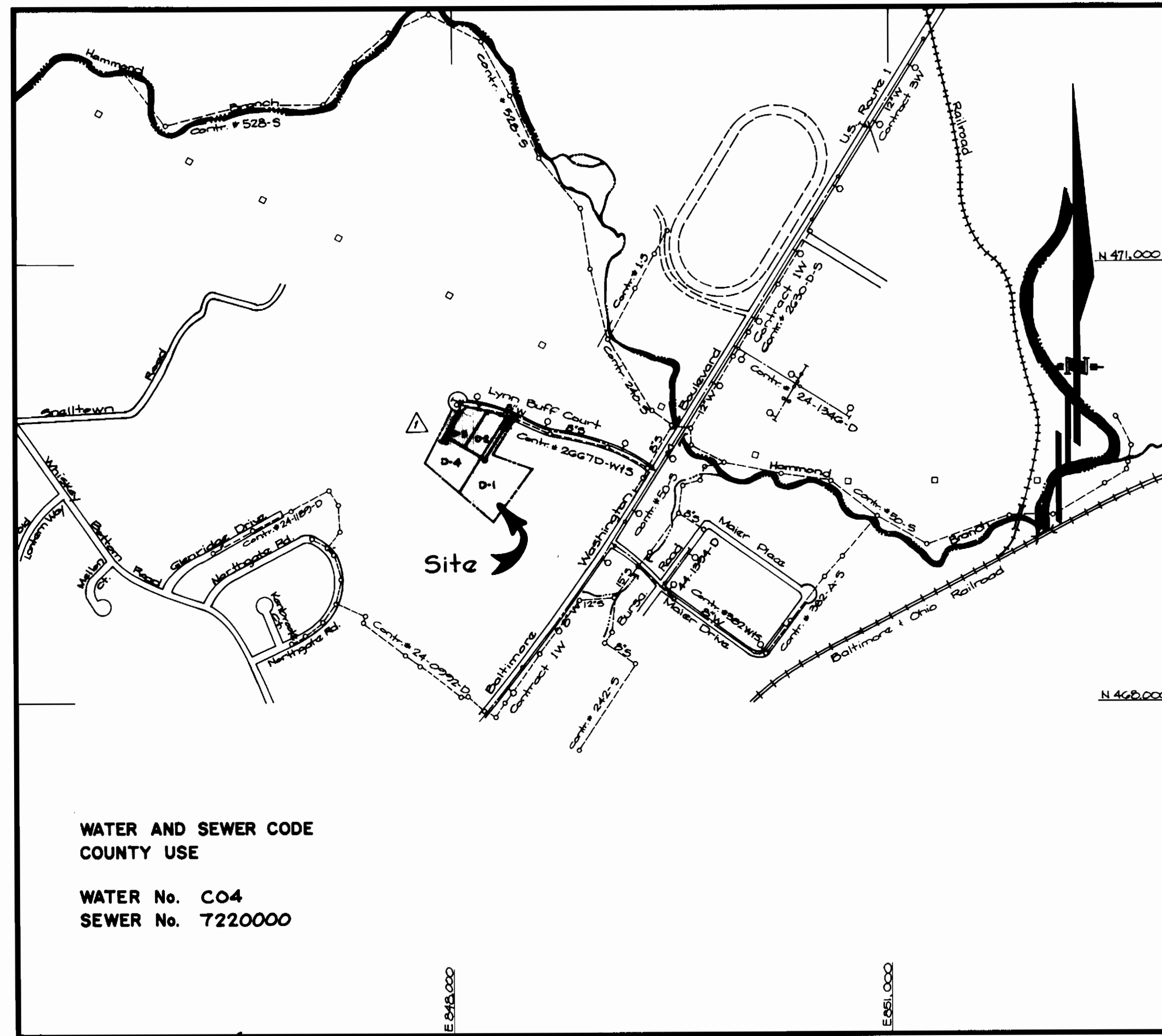


TYPE OF BUILDING	Commercial
NUMBER OF UNITS	4
NUMBER OF SHC's	4
NUMBER OF WHC's	5 Δ
DRAINAGE AREA	Little Patuxent



VICINITY MAP
SCALE: 1" = 600'

CONTRACT NO. 24-1678-D

U.S. # 1 JOINT VENTURE

PARCELS D-1 to D-4

HOWARD COUNTY, MARYLAND
DEPARTMENT OF PUBLIC WORKS

WATER AND SEWER CONSTRUCTION

QUANTITIES			
ITEM	ESTIMATED	AS-BUILT	MATERIAL / SUPPLIER
6" x 8" T.S. 4V.	1 ea.	1 EA.	U.S. PIPE & FOUNDRY
8" x 8" T.S. 4V.	1 ea.	1 EA.	U.S. PIPE & FOUNDRY
8" W	354 LF.	377 LF.	GRIFFEN PIPE PRODUCTS CO.
6" W	105 LF.	110 LF.	GRIFFEN PIPE PRODUCTS CO.
8" S	400 LF.	392 LF.	J.M. MANUFACTURING CO.
6" SHC	81 LF.	83 LF.	J.M. MANUFACTURING CO.
4' Manholes	3 ea.	3 EA.	ATLANTIC CONCRETE PRODUCTS CO.
6" Valve	2 ea.	3 EA.	MUELLER CO.
8" Valve	2 ea.	2 EA.	MUELLER CO.
1" WHC	15 LF.	15 LF.	CAMDEN
1" METER	1 EA.	1 EA.	MUELLER CO.
FIRE HYDRANT	1 EA.	1 EA.	MUELLER CO.

NOTE:
This water and sewer construction plan supercedes the water and sewer construction plan of this subdivision which was previously approved by the Director of Public Works on July 28, 1988.

Sediment Control Measures will be implemented in accordance with Section 210 of the Specifications & with Road Construction Plan F 01-142 ; Drawings 1 & 3 of 4, Sediment & Erosion Control.

REVIEWED FOR HOWARD SOIL CONSERVATION DISTRICT AND MEETS TECHNICAL REQUIREMENT

John M. Steln 11/3/92
SIGNATURE DATE

U.S. SOIL CONSERVATION SERVICE

THIS DEVELOPMENT PLAN IS APPROVED FOR SOIL EROSION AND SEDIMENT CONTROL BY THE HOWARD SOIL CONSERVATION DISTRICT.

APPROVED:
John M. Steln 1/3/92
HOWARD S.C.D. DATE

DEPARTMENT OF PUBLIC WORKS
HOWARD COUNTY, MARYLAND

James G. Linn 1/6/92
DIRECTOR OF PUBLIC WORKS DATE

William S. King 1/6/92
CHIEF, BUREAU OF ENGINEERING DATE

Richard A. Swannick 12-22-91
CHIEF, BUREAU OF UTILITIES DATE

John M. Steln 1/6/92
CHIEF, LAND DEVELOPMENT DIV. DATE

GW GUTSCHICK LITTLE & WEBER, P.A.
ENGINEERS, PLANNERS, SURVEYORS

3908 NATIONAL DRIVE SUITE 250 BERTHOVILLE OFFICE PARK
BETHOVILLE, MD 20885
(301) 421-4024

DES: G.A.H.
DRN: G.A.H.
CHK: C.K.G.

STATE OF MARYLAND
DEPARTMENT OF PUBLIC WORKS

DATE: 10/1/91 BY: NO. REVISION

REVISIONS: 1. REVISE QUANTITIES BOX NO. OF WHC'S, NOTE #20 8/27/92

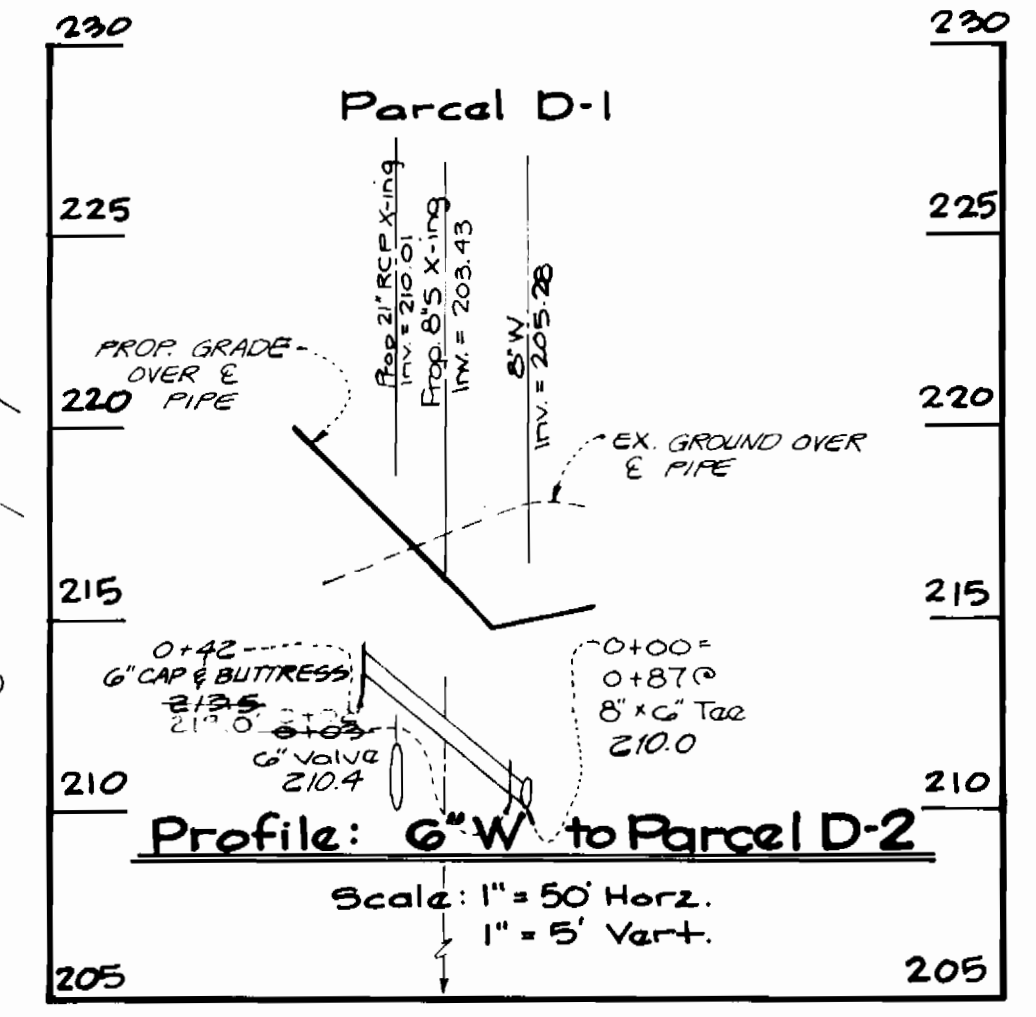
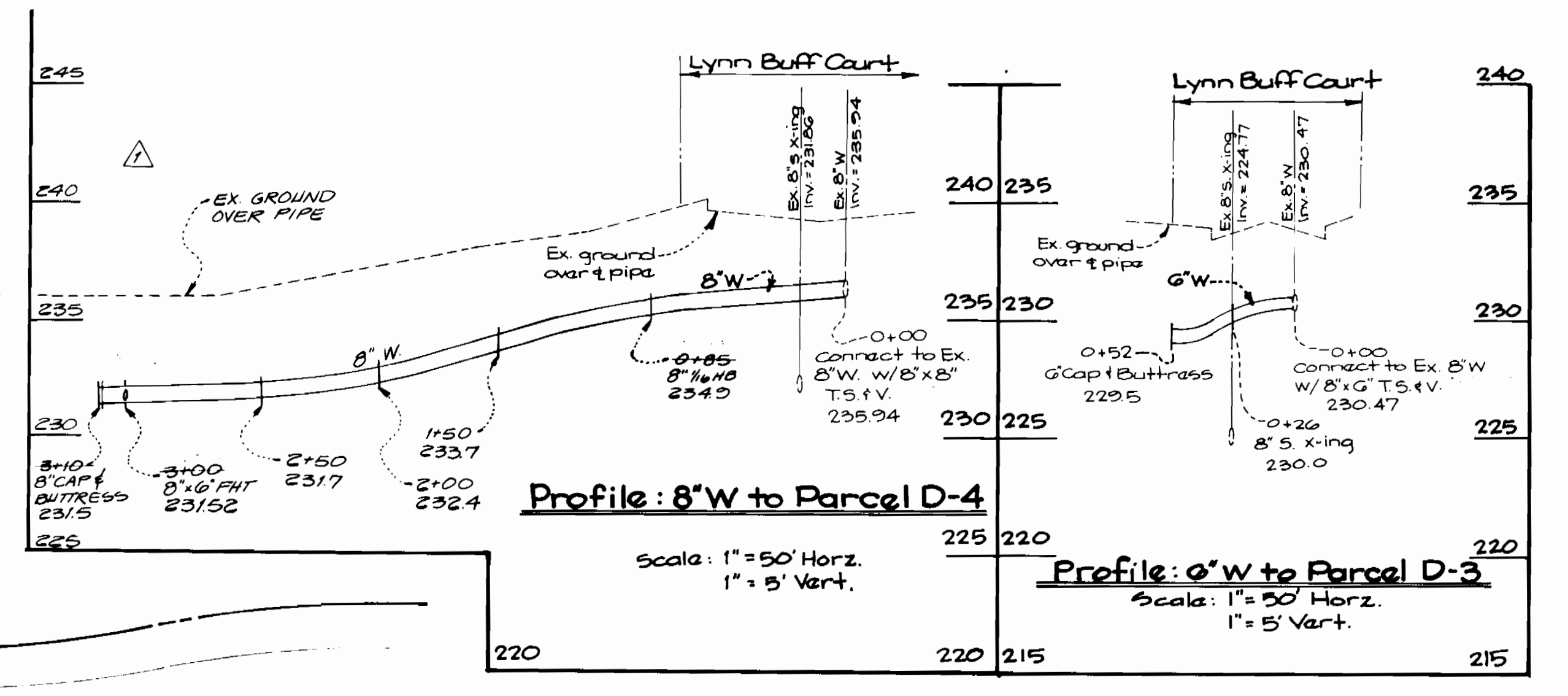
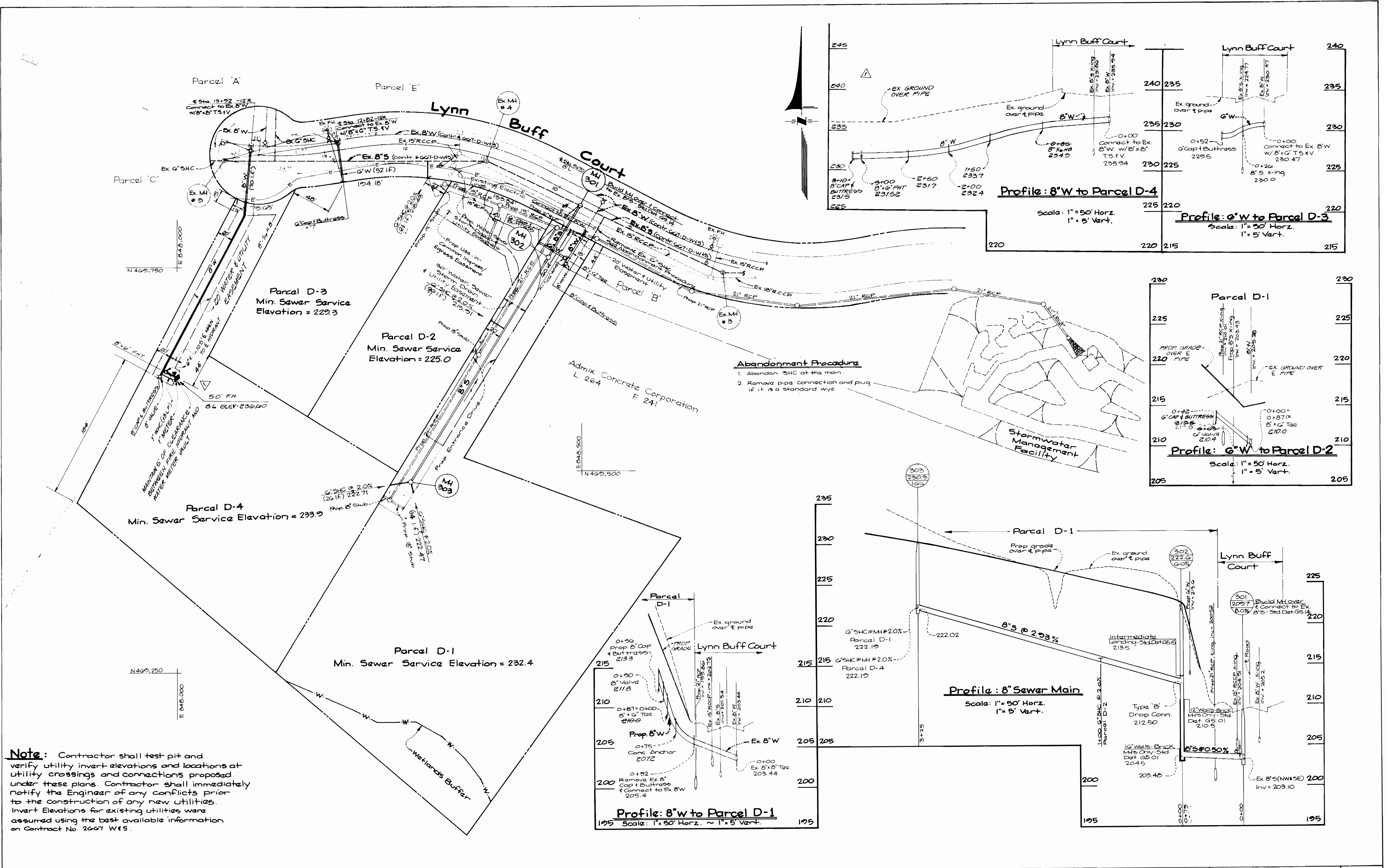
Water & Sewer Construction Plan
Title Sheet

600' SCALE MAP NO. 47 BLOCK NO. 22125

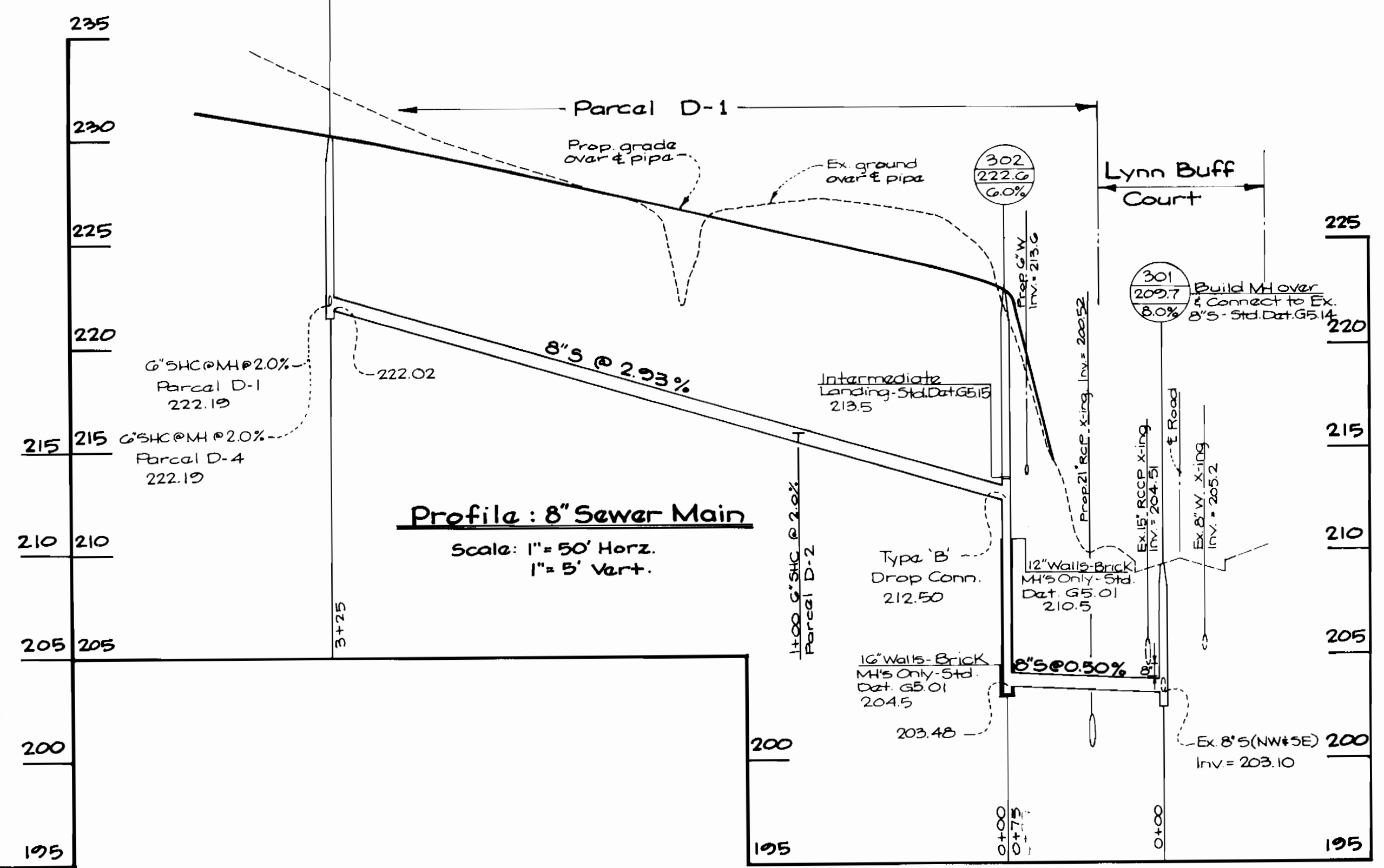
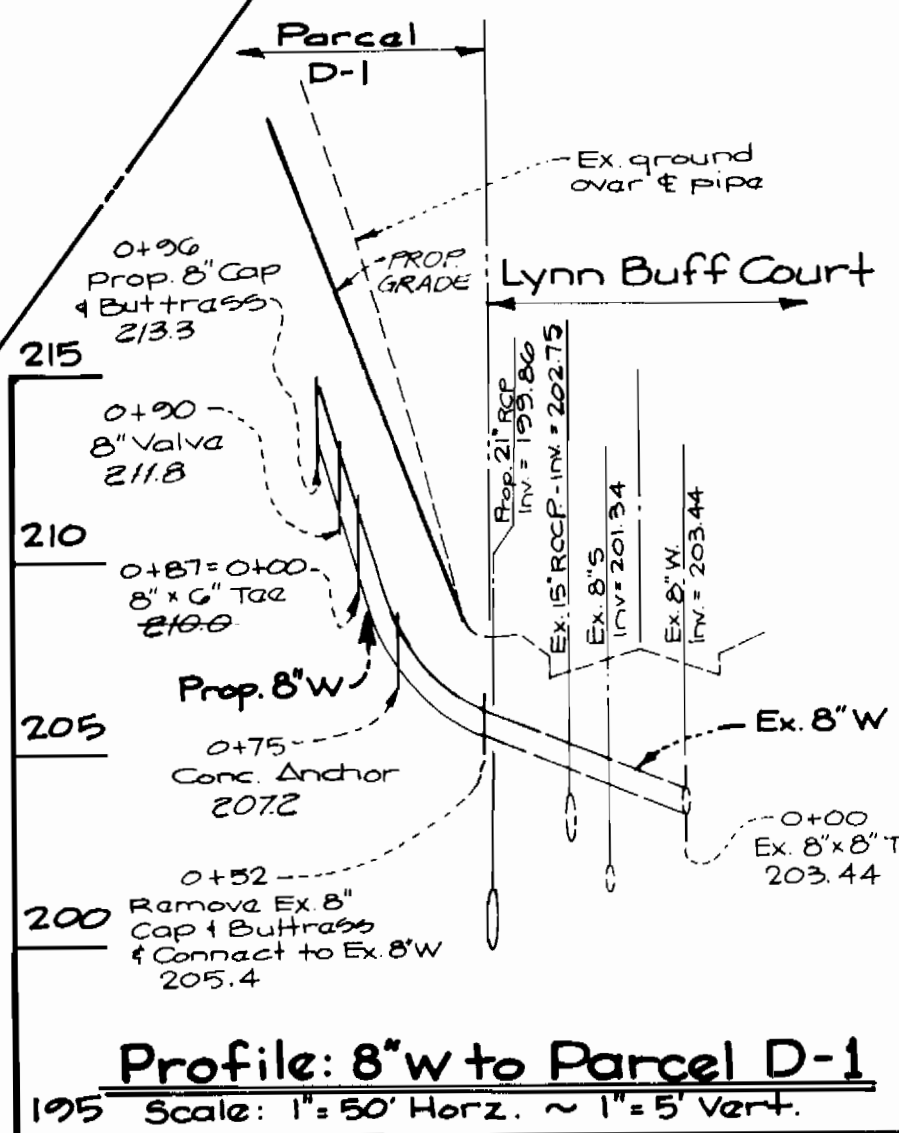
U.S. # 1 Joint Venture
Parcels D-1 to D-4
Sixth Election District
Howard County, Maryland
Contract No. 24-1678-D

SCALE AS SHOWN
SHEET 1 OF 2

AS-BUILT



Abandonment Procedure
1. Abandon SHC at the main.
2. Remove pipe connection and plug if it is a standard wye.



Note: Contractor shall test pit and verify utility invert elevations and locations at utility crossings and connections proposed under these plans. Contractor shall immediately notify the Engineer of any conflicts prior to the construction of any new utilities. Invert Elevations for existing utilities were assumed using the best available information on Contract No. 2667 W15.

DEPARTMENT OF PUBLIC WORKS HOWARD COUNTY, MARYLAND <i>James G. ...</i> DIRECTOR OF UTILITIES DATE: 12-23-91		GW GUTSCHICK LITTLE & WEBER, P.A. ENGINEERS, PLANNERS, SURVEYORS 1501 K ST. N.W. WASHINGTON, D.C. 20005 DATE: Sept 1991		DES: G.A.H. DRN: G.A.H. CHK: C.K.G. DATE: Sept 1991		Water & Sewer Construction Plan and Profiles 12-23-91 DATE: 12/23/91		U.S. #1 Joint Venture Parcels D-1 to D-4 Sixth Election District Howard County, Maryland Contract No. 24-1G78-D		SCALE AS SHOWN SHEET 2 OF 2
---	--	---	--	--	--	---	--	---	--	--------------------------------

AS-BUILT