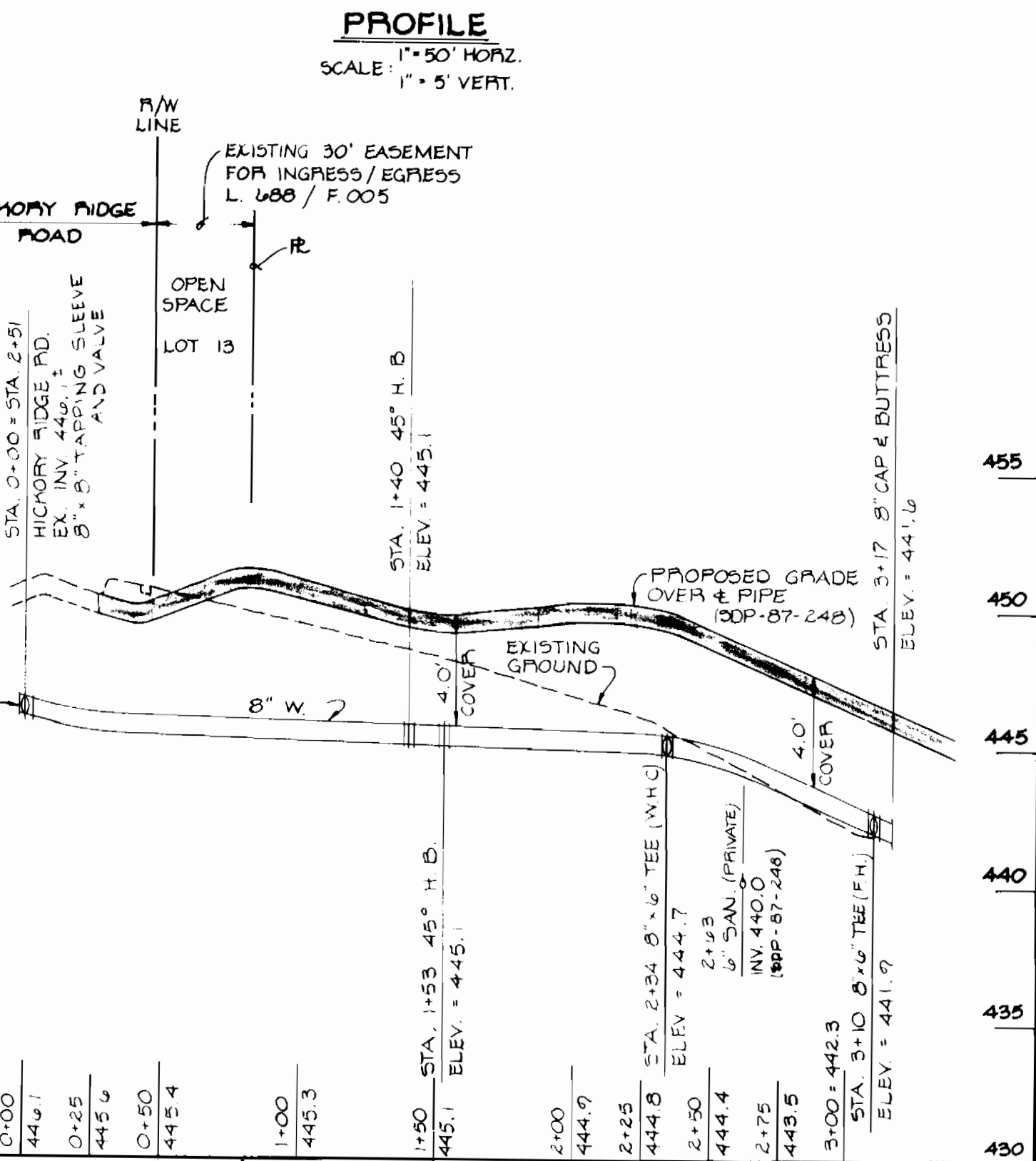
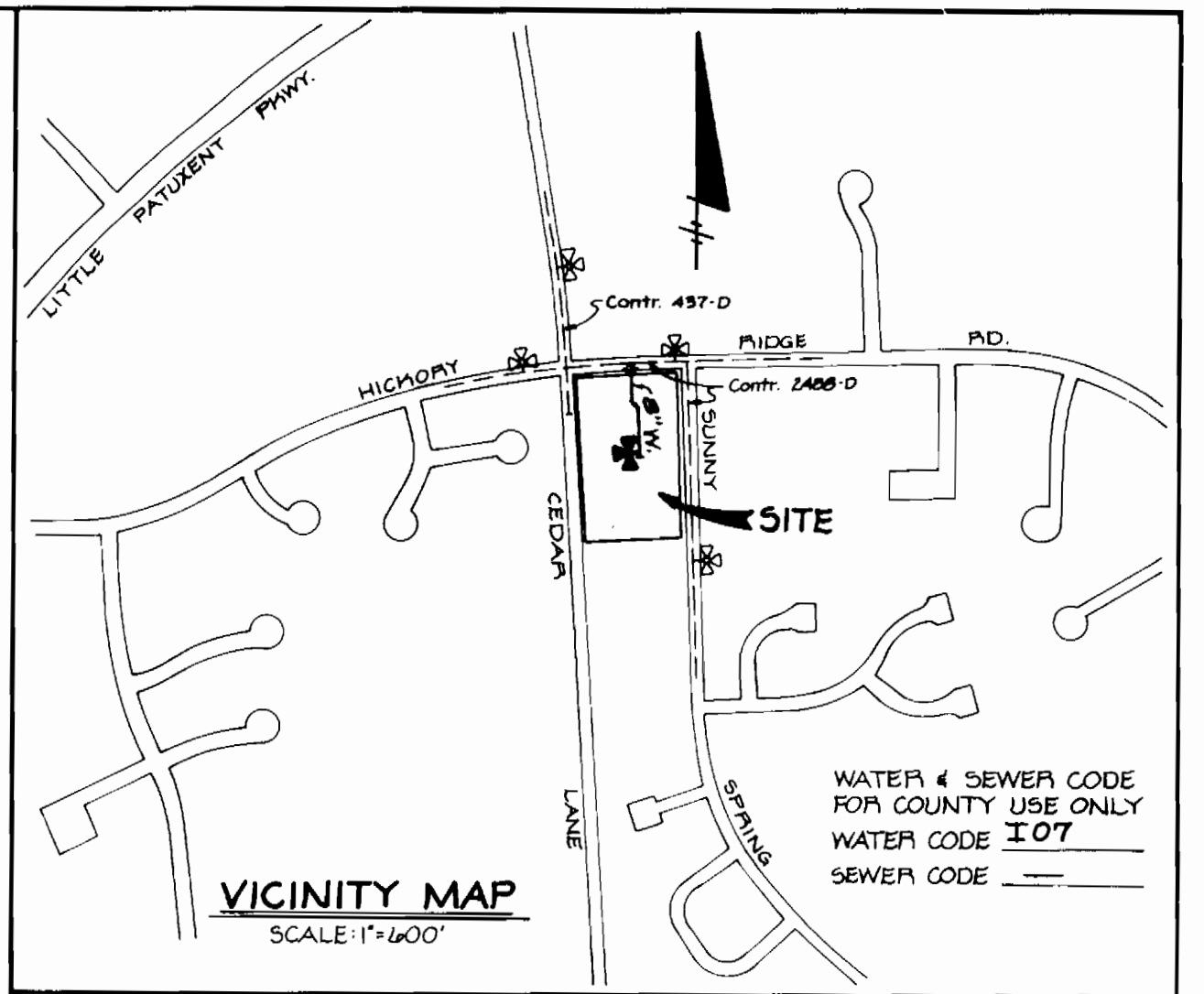


VILLAGE OF HICKORY RIDGE  
SECTION 1 AREA 1  
PLAT NO. 3567

PLAN  
SCALE: 1" = 50'



PROFILE  
SCALE: 1" = 50' HORIZ.  
1" = 5' VERT.



VICINITY MAP  
SCALE: 1" = 600'

TYPE OF BUILDINGS	OFFICES (2 BLDGS.)	B.M. #1: BONNET DOLT ON F.H. RIDGE RD. & SUNNY SPRING
NUMBER OF LOTS	1 PARCEL	② INTERSECTION HICKORY RIDGE RD. & SUNNY SPRING
NUMBER OF WATER HOUSE CONNECTIONS	2	ELEV. 449.06
NUMBER OF SEWER HOUSE CONNECTIONS	—	B.M. #2: BONNET DOLT ON F.H. @ STA. 41+60 SUNNY SPRING
DRAINAGE AREA	LITTLE PATUXENT	ELEV. 432.73

**GENERAL NOTES**

- APPROXIMATE LOCATION OF EXISTING MAINS ARE SHOWN. THE CONTRACTOR SHALL TAKE ALL NECESSARY PRECAUTIONS TO PROTECT EXISTING MAINS AND SERVICES AND MAINTAIN UNINTERRUPTED SUPPLY. ANY DAMAGE INCURRED SHALL BE REPAIRED IMMEDIATELY TO THE SATISFACTION OF THE ENGINEER, AT THE CONTRACTOR'S EXPENSE.
- ALL HORIZONTAL CONTROLS ARE BASED ON MARYLAND STATE COORDINATES.
- ALL VERTICAL CONTROLS ARE BASED ON U.S.G.S. DATUM.
- ALL PIPE ELEVATIONS SHOWN ARE INVERT ELEVATIONS.
- CLEAR ALL UTILITIES BY A MINIMUM OF 6" CLEAR ALL POLES BY 2'-0" MINIMUM OR TUNNEL AS REQUIRED. ANY COST INCURRED TO THE CONTRACTOR FOR TUNNELING OR BRACING AT POLES SHALL BE INCLUDED IN UNIT PRICES BID FOR CONSTRUCTION OF THE MAIN.
- FOR DETAILS NOT SHOWN ON THE DRAWINGS USE HOWARD COUNTY STANDARD DETAILS.
- FOR MATERIALS AND CONSTRUCTION METHODS USE HOWARD COUNTY STANDARD SPECIFICATIONS.
- CONTRACTOR SHALL LOCATE EXISTING UTILITIES A MINIMUM OF TWO (2) WEEKS IN ADVANCE OF CONSTRUCTION OPERATIONS IN THE VICINITY OF PROPOSED UTILITIES AT HIS OWN EXPENSE.
- CONTRACTOR SHALL NOTIFY THE FOLLOWING UTILITIES OR AGENCIES AT LEAST FIVE (5) WORKING DAYS BEFORE STARTING WORK SHOWN ON THESE PLANS:  
STATE HIGHWAY ADMINISTRATION - 551-5553  
BALTIMORE GAS & ELECTRIC COMPANY - UNDERGROUND ELECTRIC DISTRIBUTION CUSTOMER SERVICE - 685-0123  
BALTIMORE GAS & ELECTRIC COMPANY - UNDERGROUND GAS DISTRIBUTION CUSTOMER SERVICE - 685-0123  
ENGINEERING - "DAMAGE CONTROL" - 234-5621  
"MISS UTILITY" - 1-559-0100  
CHESAPEAKE & POTOMAC (CAP) TELEPHONE COMPANY - 725-9976  
AMERICAN TELEPHONE AND TELEGRAPH - CABLE LOCATION DIVISION - 395-3500  
COLONIAL PIPELINE COMPANY - 795-1390  
BUREAU OF UTILITIES HOWARD COUNTY - 992-2366
- TREES ARE TO BE PROTECTED FROM DAMAGE TO MAXIMUM EXTENT. TREES LOCATED WITHIN THE CONSTRUCTION STRIP ARE NOT TO BE REMOVED OR DAMAGED BY THE CONTRACTOR.
- CONTRACTOR SHALL REMOVE TREES, STUMPS AND ROOTS ALONG LINE OF EXCAVATION AS DIRECTED BY THE ENGINEER. PAYMENT FOR SUCH REMOVAL SHALL BE INCLUDED IN THE UNIT PRICE BID FOR CONSTRUCTION OF THE MAIN.
- PLACE REGULATION "MEN WORKING" AND WARNING SIGNS AS REQUIRED TO COMPLY WITH MARYLAND STATE HIGHWAY ADMINISTRATION MANUAL OF TRAFFIC CONTROL FOR HIGHWAY CONSTRUCTION AND MAINTENANCE OPERATIONS.
- ALL WATER MAINS TO BE C.I.P. OR D.I.P. UNLESS OTHERWISE NOTED.
- TOP OF ALL WATER MAINS TO HAVE A MINIMUM OF 3-1/2" COVER UNLESS OTHERWISE.
- VALVES ADJACENT TO TEES SHALL BE STRAPPED TO TEES.
- BLOCK ALL FITTINGS WITH CONCRETE.
- BURY LINE ELEVATIONS ON FIRE HYDRANTS SHALL BE SET TO THE ELEVATIONS SHOWN ON THE DRAWINGS. ALL FIRE HYDRANTS SHALL BE STRAPPED AND BUTTRESSED WITH CONCRETE IN ACCORDANCE WITH STANDARD DETAILS. SOIL AROUND THE FIRE HYDRANT TO BE COMPACTED IN ACCORDANCE WITH SECTIONS 10.03 AND 10.08 OF THE STANDARD SPECIFICATIONS.
- ALL WATER HOUSE CONNECTIONS SHALL BE FOR AN INSIDE METER SETTING.
- THE CONTRACTOR SHALL NOT OPERATE ANY WATER MAIN VALVES ON THE EXISTING SYSTEM.
- FOR ALL COPPER WATER HOUSE CONNECTIONS, UTILIZE FLARE TYPE FITTINGS ONLY.
- SERVICE CLAMPS ARE TO HAVE STAINLESS STRAPS.
- ALL DIP FITTINGS SHALL BE IN ACCORDANCE WITH ANWWA SPECIFICATION C-153 DUCTILE IRON COMPACT FITTINGS, 3" THROUGH 12" FOR WATER AND OTHER LIQUIDS.

**QUANTITIES**

ITEM	EST'D	AS BUILT	SUPPLIER	MANUFACTURER
8" WATER	317 LF	333.5 LF	A&P-WATER&SEW.	ATLANTIC STATES
6" WATER	31 LF	21.2 LF	A&P-WATER&SEW.	ATLANTIC STATES
4" WATER	—	—	—	—
FIRE HYDRANT	1 EA.	1 EA.	A&P-WATER&SEW.	KENNEDY
8" B.T.S.#V	1	1	A&P-WATER&SEW.	AMERICAN DARLING
8" 1/4 BENDS	2	2	A&P-WATER&SEW.	KENNEDY
8" X 6 TEES	2	2	A&P-WATER&SEW.	M.J. FITTINGS
6" F.H. VALVE	1	1	A&P-WATER&SEW.	KENNEDY
6" SERVICE VALVE	2	2	A&P-WATER&SEW.	KENNEDY
6" CAP	2	2	A&P-WATER&SEW.	M.J. FITTINGS
8" G REDUCER	1	1	A&P-WATER&SEW.	M.J. FITTINGS

SEDIMENT CONTROL MEASURES FOR THIS CONTRACT WILL BE IMPLEMENTED IN ACCORDANCE WITH SECTION 213 OF THE HOWARD COUNTY DESIGN MANUAL AND STANDARDS AND SPECIFICATIONS FOR SOIL EROSION AND SEDIMENT CONTROL IN DEVELOPING AREAS AND ALSO AS SHOWN ON THE GRADING AND SEDIMENT CONTROL PLAN SDP 87-248.

THIS DEVELOPMENT PLAN IS APPROVED FOR SOIL EROSION AND SEDIMENT CONTROL BY THE HOWARD SOIL CONSERVATION DISTRICT.

*Stephen L. Fisher* 3/20/88  
HOWARD S. C. D. DATE

REVIEWED FOR HOWARD S. C. D. AND MEETS TECHNICAL REQUIREMENTS.

*John M. Motz* 4/7/88  
U. S. SOIL CONSERVATION SERVICE DATE

DEPARTMENT OF PUBLIC WORKS HOWARD COUNTY, MARYLAND		<b>DEWBERRY &amp; DAVIS</b> 3300 N. RIDGE RD. SUITE 100 ELLICOTT CITY, MARYLAND 21043 (301) 461-7478 (301) 621-4970		DES: D. P. A. DRN: D. P. A. CHK: B. D. B. DATE: 1/12/88		<b>PLAN &amp; PROFILE WATER MAIN</b>		<b>HICKORY PLAZA</b> TAX MAP 35 PARCEL 45 5 <sup>TH</sup> ELECTION DISTRICT HOWARD COUNTY, MARYLAND CONTRACT NO. 44-1670-D		SCALE AS SHOWN SHEET 1 OF 1
---	--	---	--	--	--	--------------------------------------	--	--	--	--------------------------------