

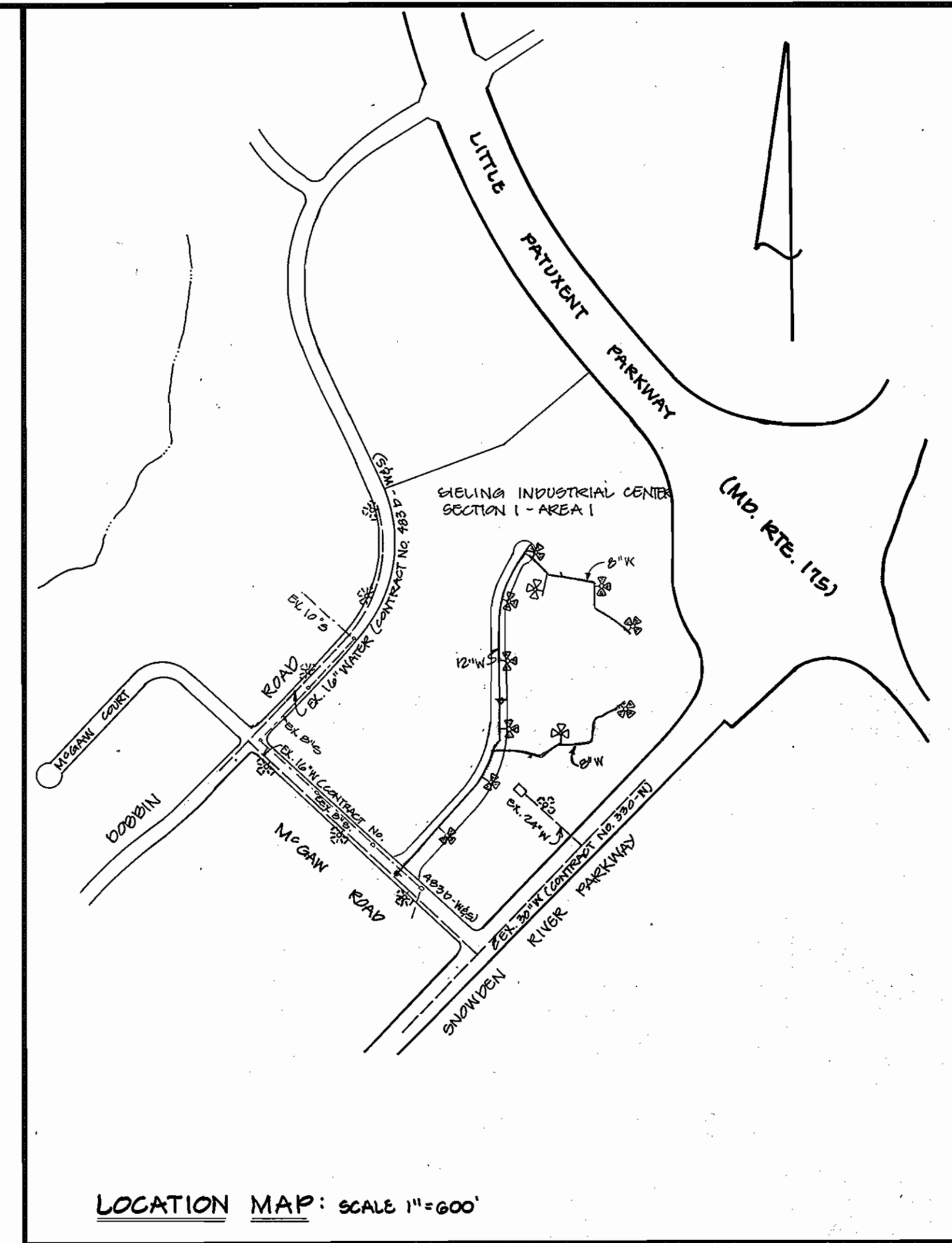
GENERAL NOTES :

PART I

- 1) APPROXIMATE LOCATION OF EXISTING MAINS ARE SHOWN. THE CONTRACTOR SHALL TAKE ALL NECESSARY PRECAUTIONS TO PROTECT EXISTING MAINS AND SERVICE AND MAINTAIN UNINTERRUPTED SUPPLY. ANY DAMAGE INCURRED SHALL BE REPAIRED IMMEDIATELY TO THE SATISFACTION OF THE ENGINEER AT THE CONTRACTOR'S EXPENSE.
- 2) ALL HORIZONTAL CONTROLS ARE BASED ON MARYLAND STATE COORDINATES.
- 3) ALL VERTICAL CONTROLS ARE BASED ON U.S.G.S. DATA.
- 4) ALL PIPE ELEVATIONS ARE INVERT ELEVATIONS.
- 5) CLEAR ALL UTILITIES BY A MINIMUM OF 6". CLEAR ALL POLES BY 2'-0" MINIMUM OR TUNNEL AS REQUIRED. THE OWNER HAS CONTACTED THE UTILITY COMPANIES AND HAS MADE ARRANGEMENTS FOR BRACING OF POLES AS SHOWN ON THE DRAWINGS. IN THE EVENT THE CONTRACTOR'S WORK REQUIRES THE BRACING OF ADDITIONAL POLES, ANY COST INCURRED BY THE OWNER FOR THE BRACING OF ADDITIONAL POLES, OR DAMAGE SHALL BE DEDUCTED FROM THE MONEY OWED TO THE CONTRACTOR. THE CONTRACTOR SHALL COORDINATE WITH THE UTILITY COMPANIES TO SCHEDULE THE BRACING OF POLES.
- 6) FOR DETAILS NOT SHOWN ON THE DRAWINGS, AND FOR MATERIALS AND CONSTRUCTION METHODS, USE HOWARD COUNTY DESIGN MANUAL, VOL. IV, STANDARD SPECIFICATIONS AND DETAILS FOR CONSTRUCTION. THE CONTRACTOR SHALL HAVE A COPY OF VOL. IV ON THE JOB.
- 7) WHERE TEST PITS HAVE BEEN MADE ON EXISTING UTILITIES THEY ARE NOTED BY THE SYMBOL ⊕ AT THE LOCATION OF THE TEST PIT. A NOTE OR NOTES CONTAINING RESULTS OF THE TEST PITS IS INCLUDED ON THE DRAWINGS. EXISTING UTILITIES IN THE VICINITY OF THE PROPOSED WORK FOR WHICH TEST PITS HAVE NOT BEEN DUG SHALL BE LOCATED BY THE CONTRACTOR TWO WEEKS IN ADVANCE OF CONSTRUCTION OPERATIONS AT HIS OWN EXPENSE.
- 8) CONTRACTOR SHALL NOTIFY THE FOLLOWING UTILITIES OR AGENCIES AT LEAST FIVE WORKING DAYS BEFORE STARTING WORK SHOWN ON THESE PLANS. STATE HIGHWAY ADMINISTRATION 531-5533 BALTO. GAS AND ELECTRIC CO. - CONTRACTOR SERVICES 850-4620, BALTO. GAS AND ELECTRIC CO. UNDERGROUND DAMAGE CONTROL 859-9004, BALTO. GAS AND ELECTRIC CO. - TROUBLE SHOOTING 296-9001, MISS UTILITY - 1-559-0100, COLONIAL PIPELINE 795-1390 BUREAU OF UTILITIES, HOWARD CO. DEPT. OF PUBLIC WORKS 992-2366, C&P TELEPHONE 1-800-257-7777.
- 9) TREES AND SHRUBS ARE TO BE PROTECTED FROM DAMAGE TO MAXIMUM EXTENT. TREES AND SHRUBS LOCATED WITHIN THE CONSTRUCTION STRIP ARE NOT TO BE REMOVED OR DAMAGED BY THE CONTRACTOR.
- 10) CONTRACTOR SHALL REMOVE TREES, STUMPS, AND ROOTS ALONG THE LINE OF EXCAVATION. PAYMENT FOR SUCH REMOVAL SHALL BE INCLUDED IN THE UNIT PRICE BID FOR CONSTRUCTION OF THE MAIN.
- 11) PLACE REGULATION "MEN WORKING" WARNING SIGNS AS REQUIRED TO COMPLY WITH MARYLAND STATE HIGHWAY ADMINISTRATIONS MANUAL FOR HIGHWAY CONSTRUCTION AND MAINTENANCE OPERATIONS.

PART II - WATER

- 1) ALL WATER MAINS TO BE D.I.P. UNLESS OTHERWISE NOTED.
- 2) TOPS OF ALL WATER MAINS TO HAVE A MINIMUM OF 3.5' COVER UNLESS OTHERWISE NOTED.
- 3) VALVES ADJACENT TO TEES SHALL BE STRAPPED TO TEES.
- 4) ALL FITTINGS SHALL BE BUTTRESSED OR ANCHORED WITH CONCRETE IN ACCORDANCE WITH THE STANDARD DETAILS UNLESS OTHERWISE PROVIDED ON THE DRAWINGS.
- 5) FIRE HYDRANTS SHALL BE SET TO THE BURY LINE ELEVATION SHOWN ON THE DRAWINGS. ALL FIRE HYDRANTS SHALL BE STRAPPED AND BUTTRESSED WITH CONCRETE IN ACCORDANCE WITH THE STANDARD DETAILS. SOIL AROUND THE FIRE HYDRANT SHALL BE COMPACTED IN ACCORDANCE WITH SECTION 1003 AND 1008 OF THE STANDARD SPECIFICATIONS.
- 6) THE CONTRACTOR SHALL NOT OPERATE ANY WATER MAIN VALVES ON THE EXISTING WATER SYSTEM.
- 7) ALL WATER HOUSE CONNECTIONS SHALL BE INSIDE METER SETTINGS UNLESS OTHERWISE NOTED.
- 8) ALL FIRE HYDRANTS TO BE SET THREE FEET BEHIND PROPOSED FACE OF CURB UNLESS NOTED OTHERWISE.
- 9) ALL WATER HOUSE CONNECTIONS SHALL COMPLY WITH HOWARD CO. STD. 3.24 AS SHOWN ON ART. 40, SPECIAL PROVISIONS.
- 10) MINIMUM CRIMP RADIUS WILL BE SPECIFIED BY PIPE MANUFACTURER.
- 11) WATER MAINS AND WATER HOUSE CONNECTION LINES MUST BE PLACED SO AS TO HAVE AT LEAST ONE FOOT SEPARATION FROM THE SEWER MAIN OR SEWER HOUSE CONNECTION AS THEY PASS ABOUT IT.
- 12) SERVICE CLAMPS ARE TO HAVE STAINLESS STRAPS



LOCATION MAP: SCALE 1"=600'

BENCH MARK

BM# 294401 ELEV. 307.49
 Standard concrete monument set flush with surface
 North 491,353.010 East 259,224.723
 BM# 2943021 ELEV. 288.24
 3/4" RB set 0.3ft. below the surface
 North 492,140.801 East 259,226.671

Type of building: office
 Drainage area: Little Patuxent
 No. SHG: 1
 No. WHG: 2
 No. parcels: 1
 Water code: 204
 Sewer code: 2003000

QUANTITIES

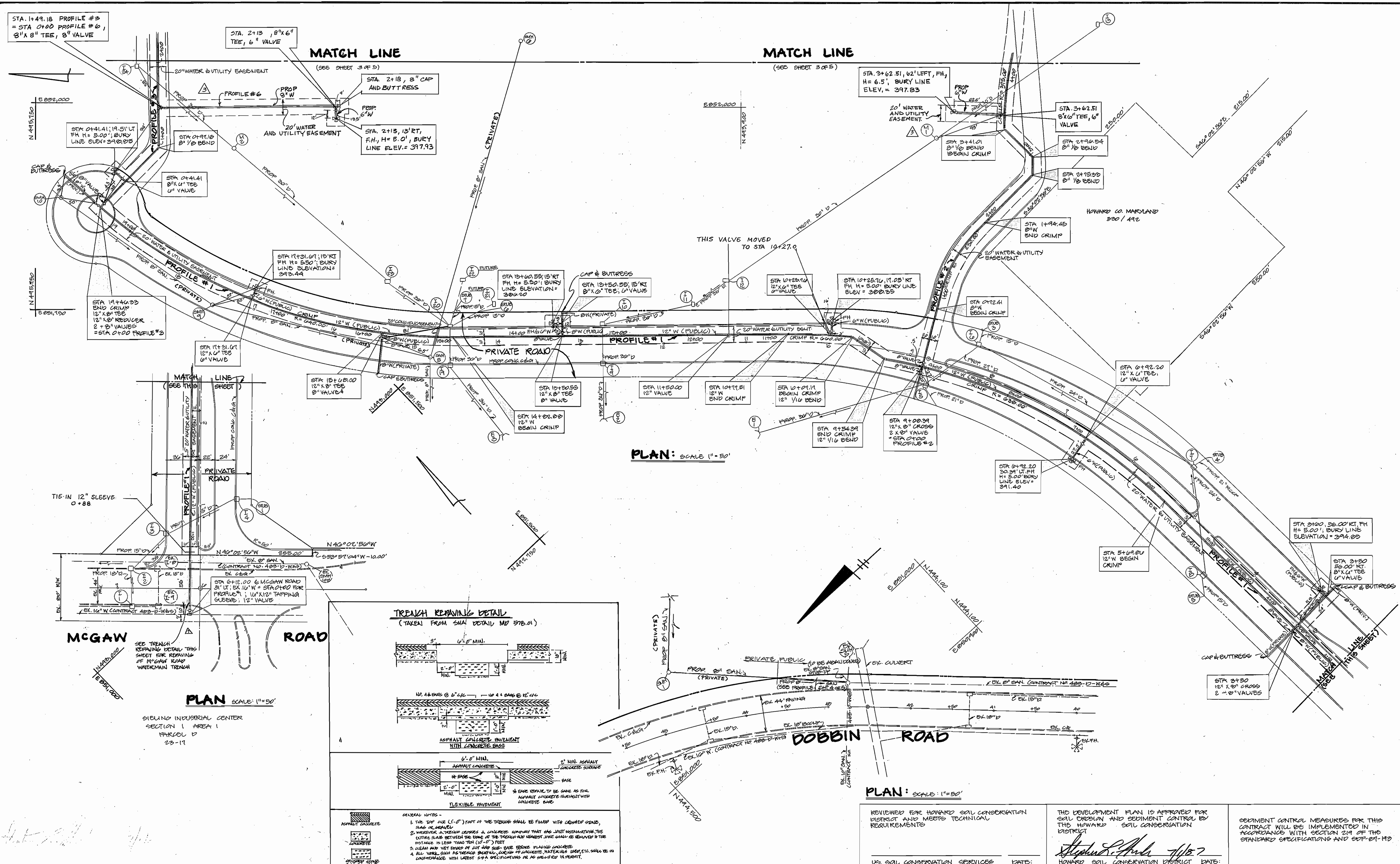
ITEMS	ESTIMATED	AS-BUILT	MATERIAL/SUPPLIER
6" D.I.P.	236	161	BELAIR RD SUPPLY CO.
8" D.I.P.	214	1896	"
12" D.I.P.	1441	1947	"
12" X 6" CROSS	2	2	"
8" X 6" TEE	7	7	"
8" X 8" TEE	2	2	"
12" X 8" TEE	3	3	"
12" X 6" TEE	3	3	"
6" VALVE	10	10	"
8" VALVE	10	10	"
12" VALVE	2	2	"
FIRE HYDRANT	12	10	"
12" X 8" REELER	1	1	"
16" X 12" TAPPING SLEEVE	1	1	"
12" 1/2" BEND	2	2	"
8" 1/2" BEND	12	12	"
8" CAP & BUTTRESS	9	8	"
2" SEWER	20 LF	20 LF	"

GENERAL NOTES - CONTINUED

- PART III - SEWER**
1. ALL SEWER LINES SHALL BE C900, RCP, 40% PC, RCP CLASS 2400 OR P.V.C UNLESS OTHERWISE NOTED.
 2. THE CONTRACTOR SHALL PROVIDE A JOINT IN ALL SEWER MAINS WITHIN 2'-0" OF EXTERIOR MANHOLE WALL.
 3. ALL MANHOLES SHALL BE 4'-0" INSIDE DIAMETER UNLESS OTHERWISE NOTED.
 4. MANHOLES SHOWN WITH 12" WALLS ARE BRICK MANHOLES ONLY.
 5. MANHOLES DESIGNATED W.T. IN THE PLAN AND PROFILE SHALL HAVE WATERTIGHT FRAME & COVER, STANDARD DETAIL 2-551, WHERE WATERTIGHT MANHOLE FRAME & COVER IS USED, SET TOP OF FRAME 1'-6" ABOVE FINISH GRADE UNLESS NOTED ON THE DRAWINGS.
 6. MANHOLES LOCATED WITHIN PROPOSED ROADWAY SHALL HAVE STANDARD HEAVY TRAFFIC MANHOLE FRAME AND COVER STANDARD DETAIL 2-551.
 7. THE CONTRACTOR SHALL ARRANGE TO HAVE THE EXISTING UNDERGROUND CABLE FIELD LOCATED PRIOR TO ANY EXCAVATION FOR THE SEWER MAIN.

REVIEWED FOR HOWARD SOIL CONSERVATION DISTRICT AND MEETS TECHNICAL REQUIREMENTS <i>James M. ...</i> 7-1-87 US SOIL CONSERVATION SERVICES DATE	THE DEVELOPMENT PLAN IS APPROVED FOR SOIL EROSION AND SEDIMENT CONTROL BY THE HOWARD SOIL CONSERVATION DISTRICT. <i>Stephan ...</i> 7/1/87 HOWARD SOIL CONSERVATION DISTRICT DATE	SEDIMENT CONTROL MEASURES FOR THIS CONTRACT WILL BE IMPLEMENTED IN ACCORDANCE WITH SECTION 291 OF THE STANDARD SPECIFICATIONS AND ODP-87-113
---	---	--

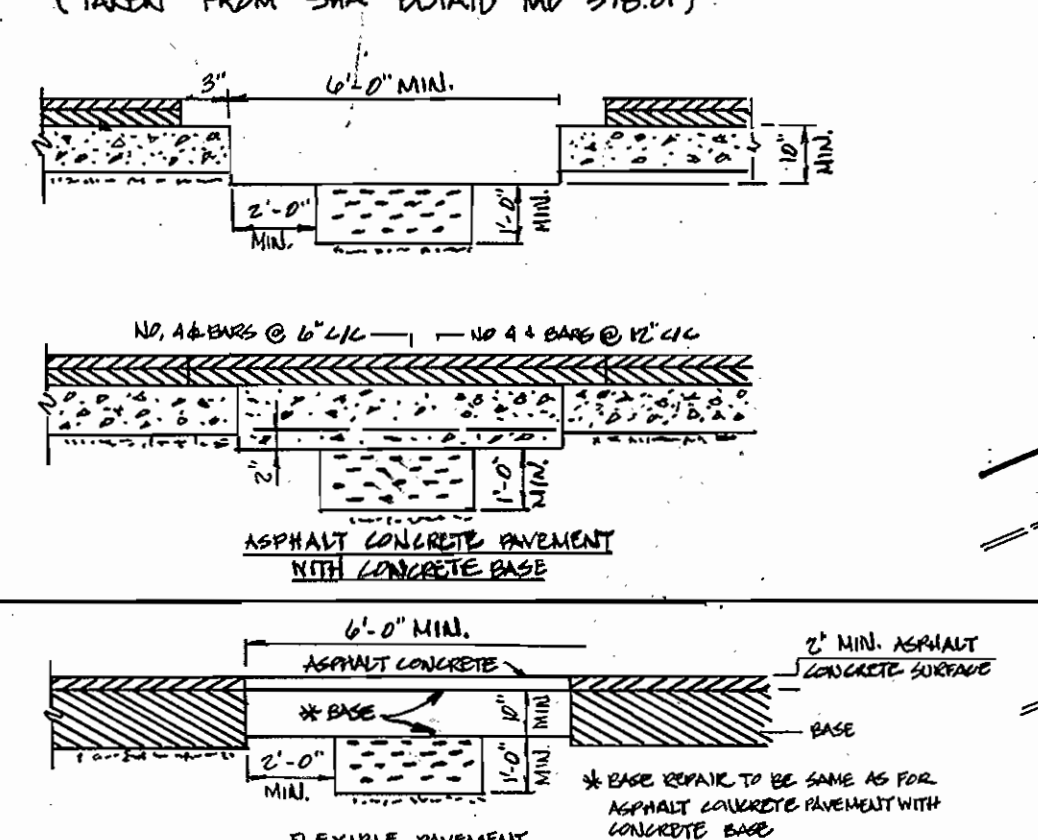
DEPARTMENT OF PUBLIC WORKS James J. ... 7/7/87 DIRECTOR OF PUBLIC WORKS DATE	ENGINEER GEORGE WM. STEPHENS JR. AND ASSOCIATES, INC. 303 ALLEGHENY AVENUE TOWSON, MD. 21204 (301) 825-8120	DESIGNED: W.Z. DRAWN: D.A.L. CHECKED: T.C.	REVISION 1 REVISED QUANTITY 12" D.I.P. FROM 187 L.F. TO 141 L.F. 2 ADDED 75' D.I.P., 210' 8" D.I.P., (1) 8" CAP & BUTTRESS, 2 F.H. IN QUANTITIES 8/1/87	TITLE SHEET & GENERAL NOTES CONTRACT NO. 24-1607-D 600' SCALE MAP NO. 36 BLOCK NO. 238 24	PROPOSED OFFICE COLUMBIA CORPORATE PARK SIELING INDUSTRIAL PARK SECTION 1, AREA 1, PARCEL A HOWARD CO., MARYLAND ELECTION DIST. 6 APRIL 23, 1987	SCALE: AS SHOWN SHEET NO. 1 OF 5
--	--	--	--	---	--	-------------------------------------



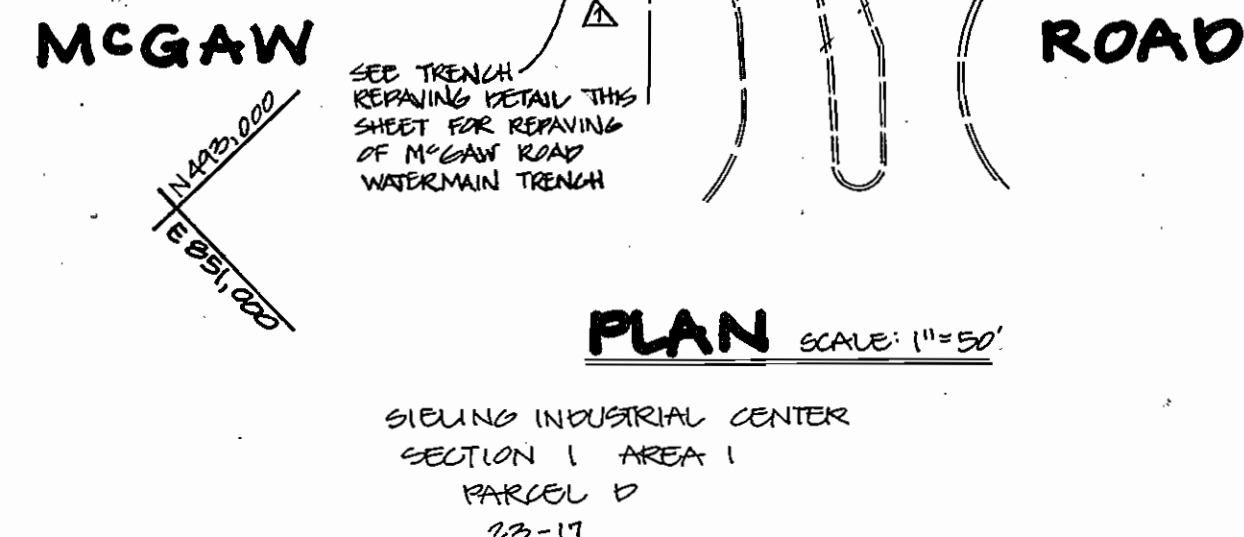
PLAN: SCALE 1" = 50'

PLAN: SCALE 1" = 20'

TRENCH REPAIRING DETAIL
(TAKEN FROM SHM DETAIL MD 57B.01)



- GENERAL NOTES -
1. THE 12\"/>



PLAN SCALE: 1" = 50'

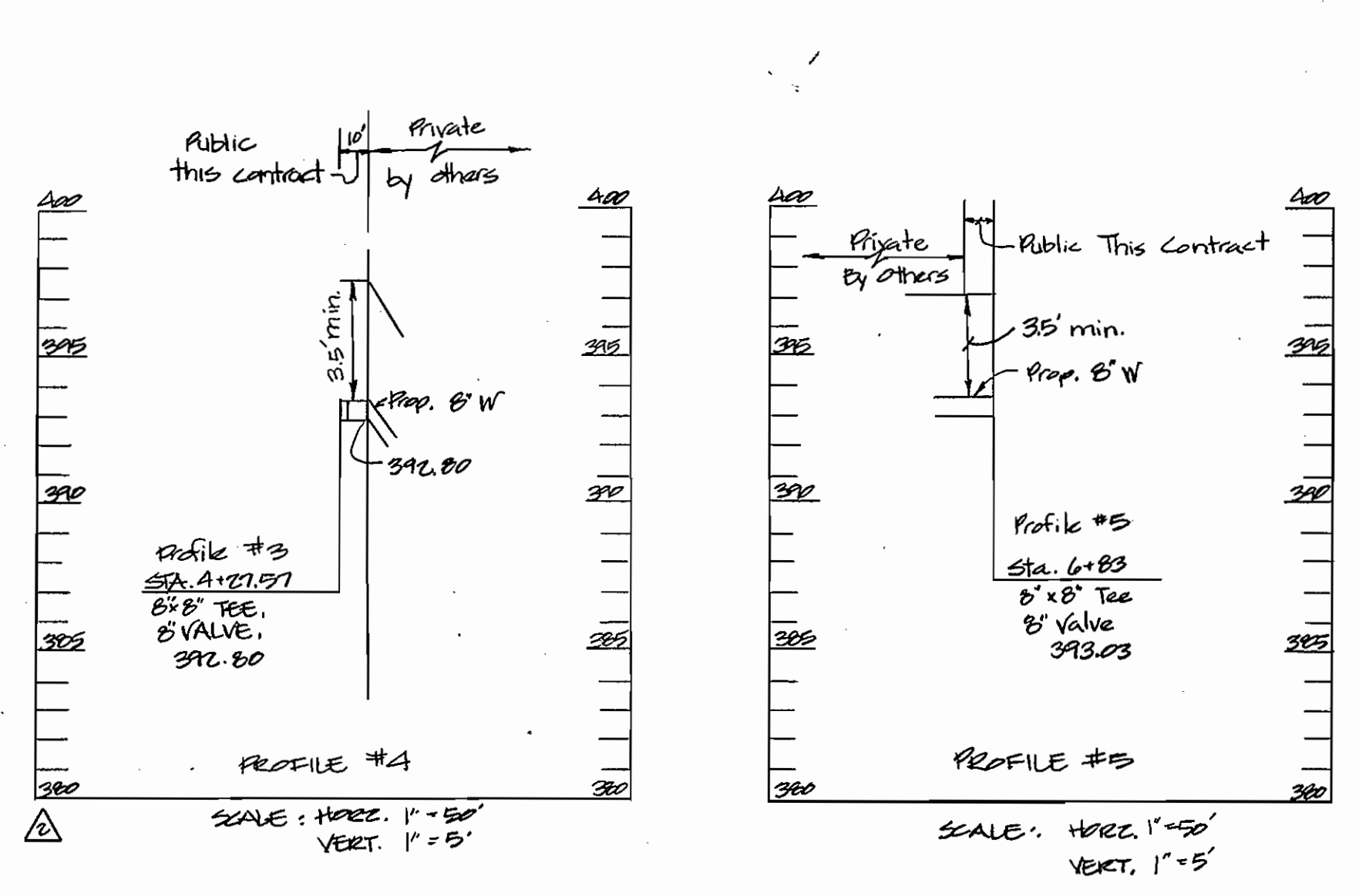
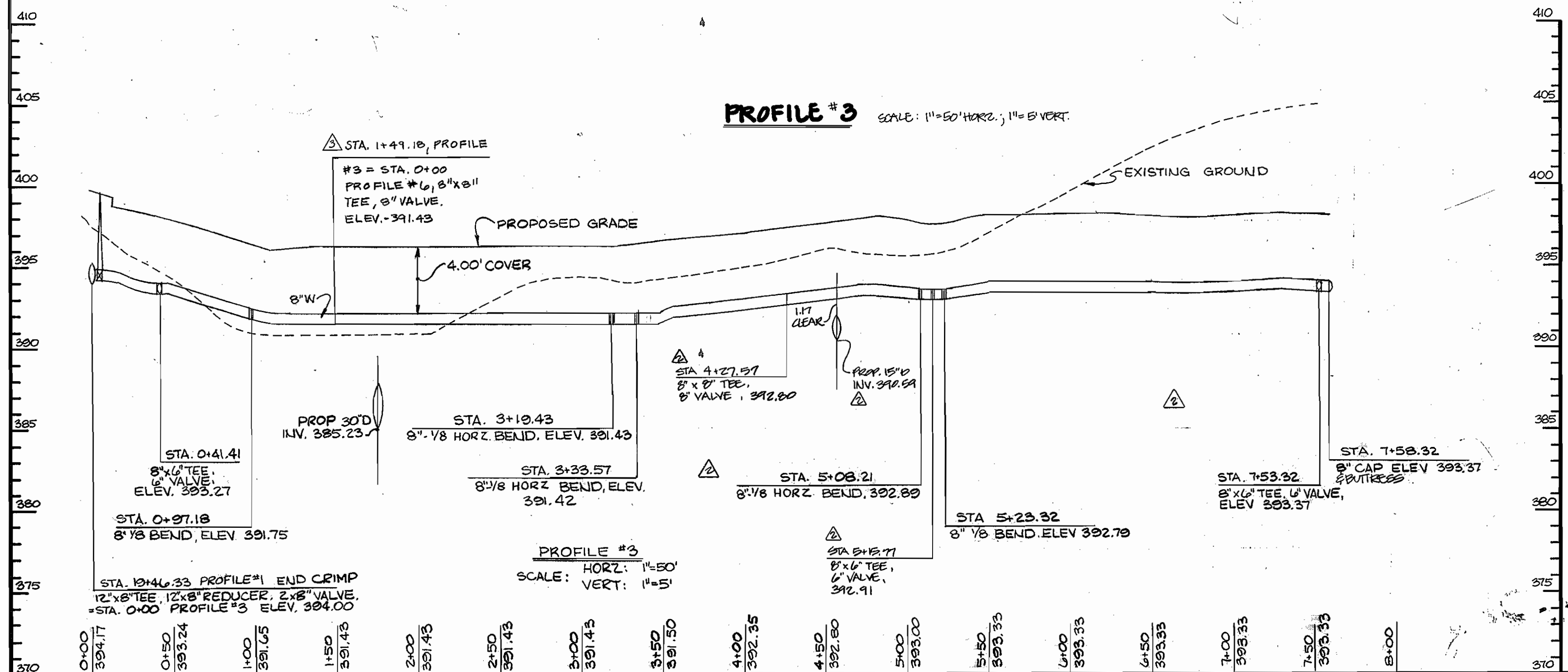
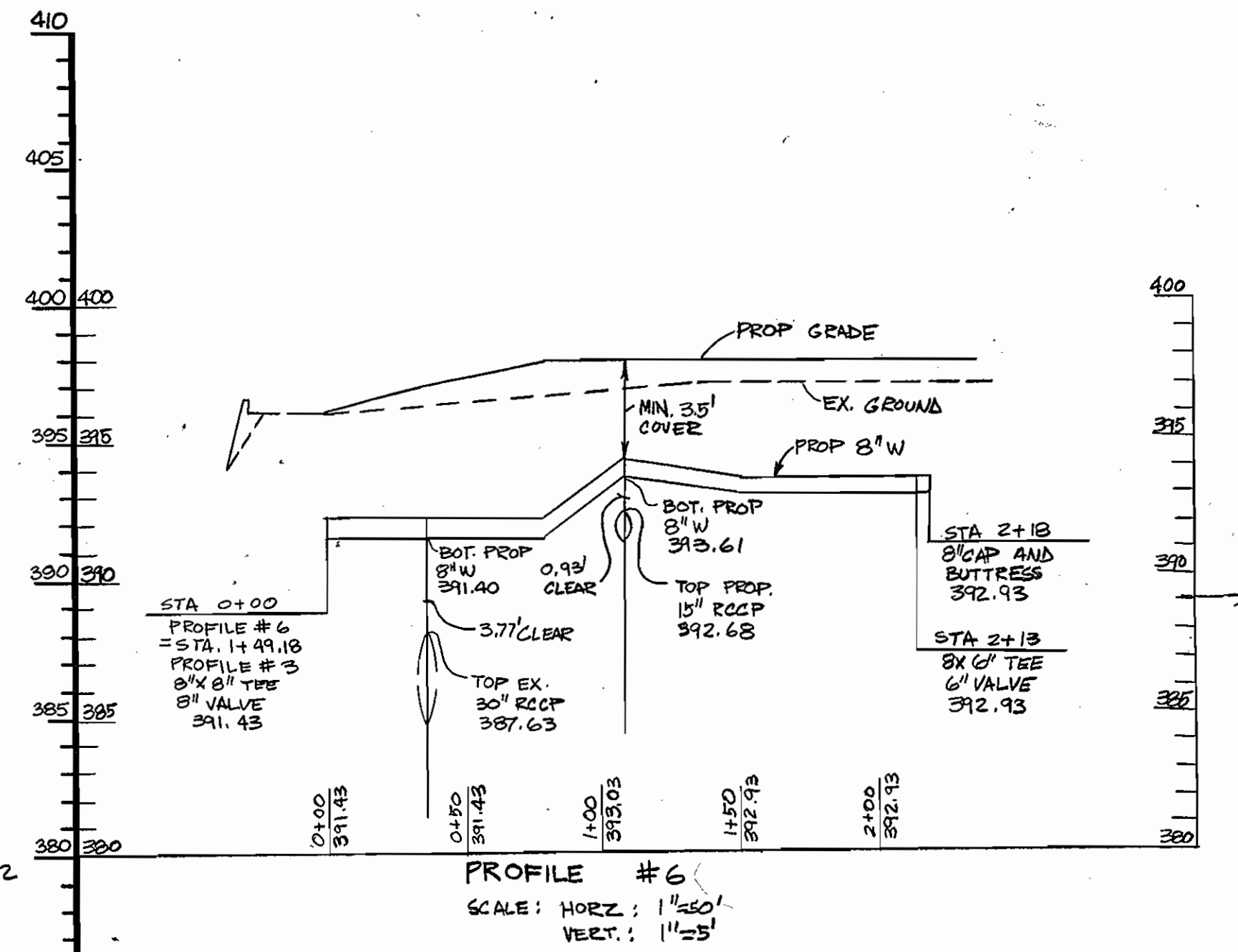
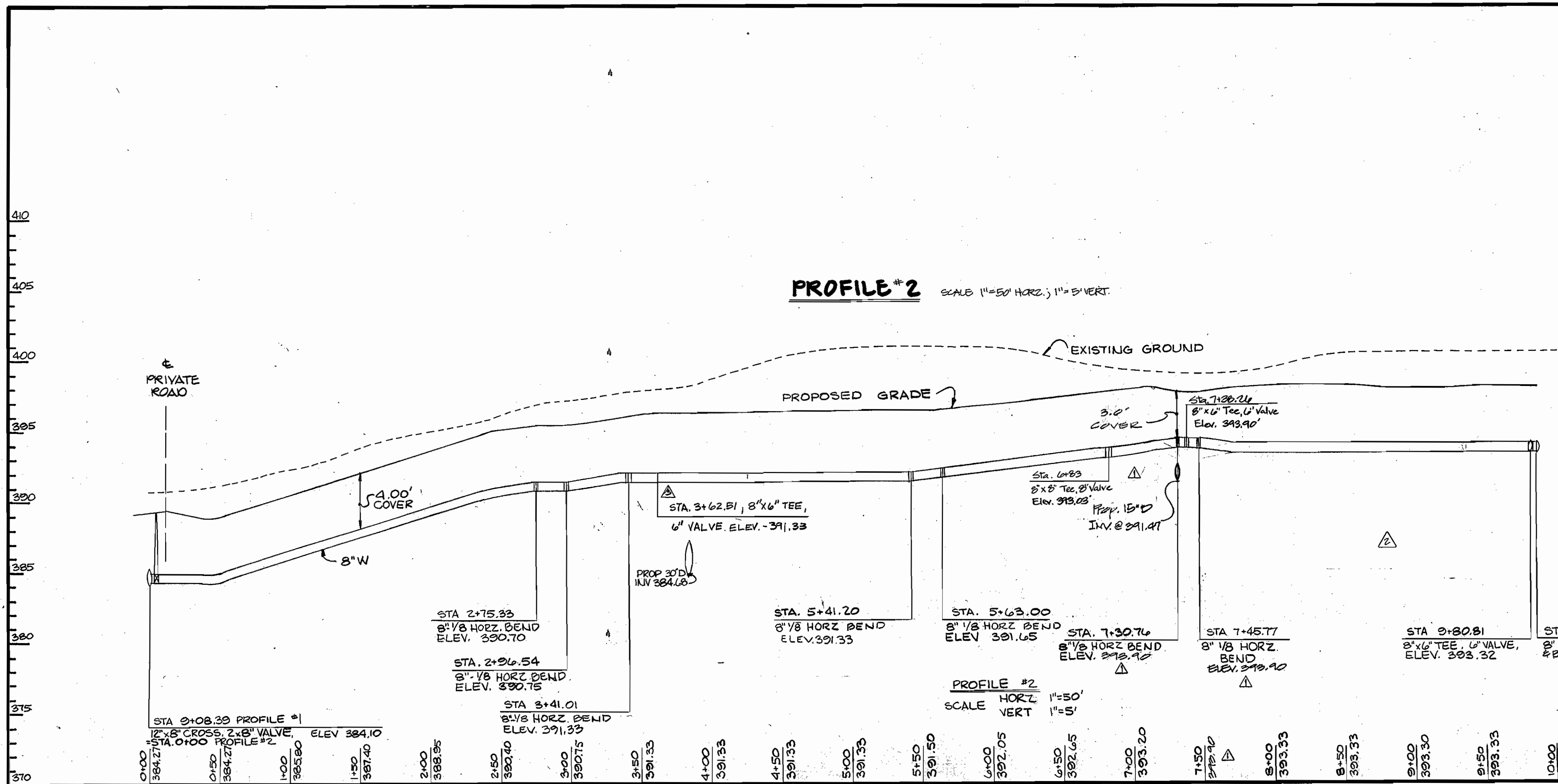
REVIEWED FOR HOWARD SOIL CONSERVATION DISTRICT AND MEETS TECHNICAL REQUIREMENTS

THE DEVELOPMENT PLAN IS APPROVED FOR SOIL EROSION AND SEDIMENT CONTROL BY THE HOWARD SOIL CONSERVATION DISTRICT

SEEDING CONTROL MEASURES FOR THIS CONTRACT WILL BE IMPLEMENTED IN ACCORDANCE WITH SECTION 214 OF THE STANDARD SPECIFICATIONS AND COP-87-113

DATE: _____ DATE: _____

DEPARTMENT OF PUBLIC WORKS DIRECTOR OF PUBLIC WORKS: [Signature] DATE: 7-7-87 CHIEF, BUREAU OF ENGINEERING DATE: 7-7-87		ENGINEER GEORGE WM. STEPHENS JR. AND ASSOCIATES, INC. 303 ALLEGHENY AVENUE, TOWSON, MD. 21204 (301) 825-8120		DESIGNED: W. Z. DRANN DRAWN: D. A. L. CHECKED: T. C.		<table border="1"> <thead> <tr> <th>BY</th> <th>NO</th> <th>REVISION</th> <th>DATE</th> </tr> </thead> <tbody> <tr> <td>WJS</td> <td>1</td> <td>REMOVE INSTALLATION BY CORE & PAVE METHOD OF 12\"/> </td></tr></tbody> </table>		BY	NO	REVISION	DATE	WJS	1	REMOVE INSTALLATION BY CORE & PAVE METHOD OF 12\"/>	PROPOSED OFFICE COLUMBIA CORPORATE PARK SIELING INDUSTRIAL PARK SECTION 1, AREA 1, PARCEL #1 HOWARD CO., MARYLAND ELECTION DIST. 6 APRIL 23, 1987	
BY	NO	REVISION	DATE													
WJS	1	REMOVE INSTALLATION BY CORE & PAVE METHOD OF 12\"/>														



ADDITIONAL REVISIONS
 A. ADDED 8" X 6" TEE, STA. 3+67.57
 PROFILE #2. ADDED 8" X 6" TEE, STA. 1+49.18. PROFILE #3. ADDED PROFILE #6

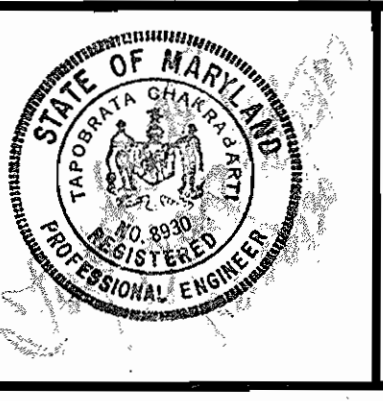
REVIEWED FOR HOWARD SOIL CONSERVATION AND MEETS TECHNICAL REQUIREMENTS
 U.S. SOIL CONSERVATION SERVICES DATE: _____

THE DEVELOPMENT PLAN IS APPROVED FOR SOIL EROSION AND SEDIMENT CONTROL BY THE HOWARD SOIL CONSERVATION DISTRICT
 HOWARD SOIL CONSERVATION DISTRICT DATE: 7/1/82

SEDIMENT CONTROL MEASURES FOR THIS CONTRACT WILL BE IMPLEMENTED IN ACCORDANCE WITH SECTION 210 OF THE STANDARD SPECIFICATIONS AND SDP-87-103.

DEPARTMENT OF PUBLIC WORKS
 DIRECTOR OF PUBLIC WORKS: _____ DATE: 7/1/82
 CHIEF BUREAU OF ENGINEERING: _____ DATE: 7/1/82
 CHIEF LAND DEVELOPMENT DIV.: _____ DATE: 7/1/82

ENGINEER
GEORGE WM. STEPHENS JR. AND ASSOCIATES, INC.
 303 ALLEGHENY AVENUE TOWSON, MD 21204
 (301) 825-8120



DESIGNED: BWZ
 DRAWN: BMW
 CHECKED: TC

BY	NO.	REVISION	DATE
BWZ	1	REV. CROSSINGS AT STA. 7+26.24 & STA. 7+45.77	7/1/82
BWZ	2	REMOVED 8" X 6" TEE & VALVE @ STA. 3+41.01. PROFILE #3. ADDED 8" X 6" TEE & VALVE @ STA. 5+15.77. PROFILE #3. ADDED 8" X 6" TEE & VALVE @ STA. 4+27.57. PROFILE #3. REV. LOCATION OF CROSSING AT PROP. 15' D INV. @ STA. 7+30.76. ADDED PROFILE #4	7/1/82
BWZ	3	REMOVED 8" X 6" TEE & VALVE @ STA. 7+45.77. PROFILE #3. RELOCATED 8" X 6" TEE & VALVE @ STA. 7+30.76. PROFILE #3. RELOCATED 8" X 6" TEE & VALVE @ STA. 7+30.76. PROFILE #3. RELOCATED 8" X 6" TEE & VALVE @ STA. 7+30.76. PROFILE #3.	7/1/82
BWZ	4	ADDED PROFILE #5	7/1/82

PROFILE FOR PROPOSED WATER MAIN
 CONTRACT NO. 24-1604-D
 600' SCALE MAP NO 36 BLOCK NO. 23 & 24

PROPOSED OFFICE
COLUMBIA CORPORATE PARK
 SIELING INDUSTRIAL PARK SECTION I, AREA I, PARCEL #
 HOWARD CO. MARYLAND ELECTION DIST. 6
 APRIL 23, 1987

SCALE: AS SHOWN
 SHEET NO. 5 OF 5