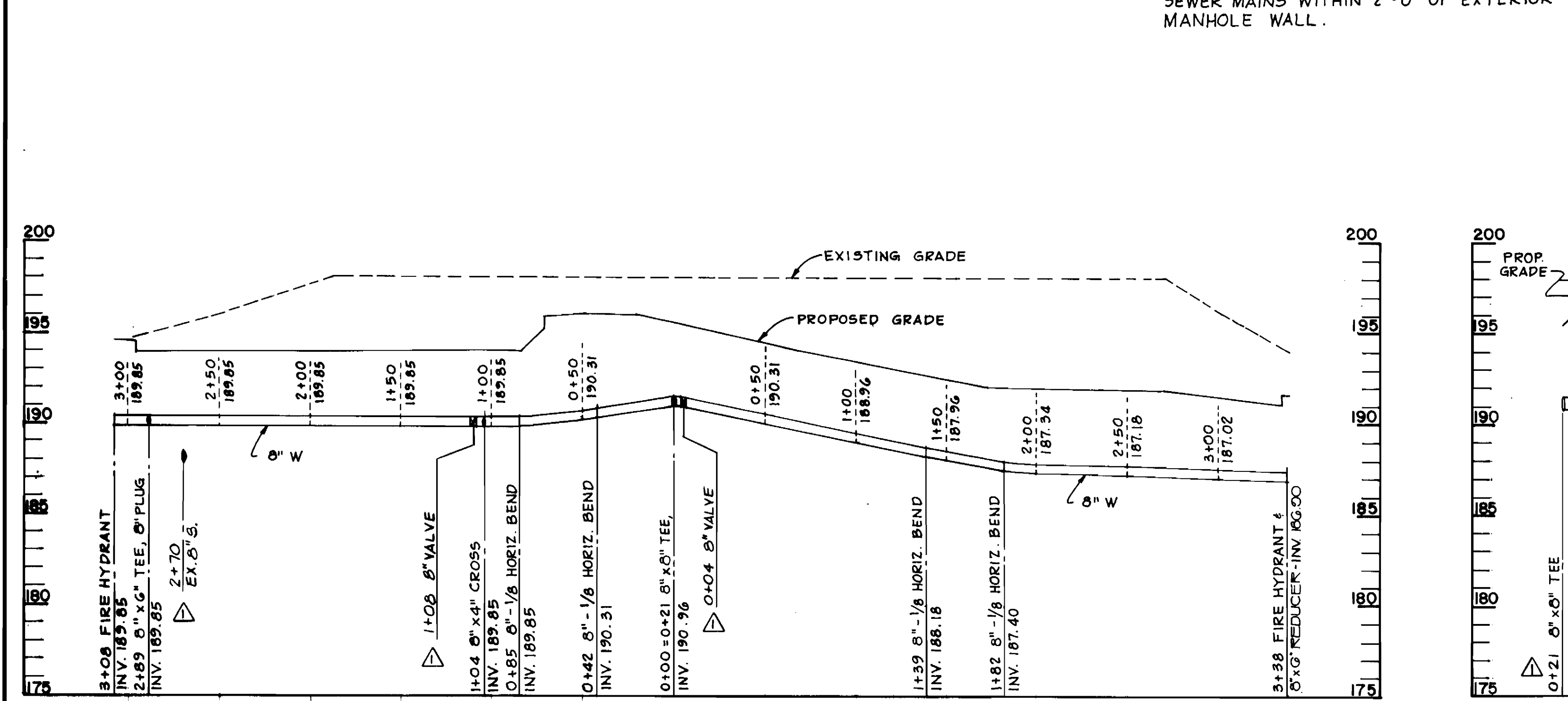
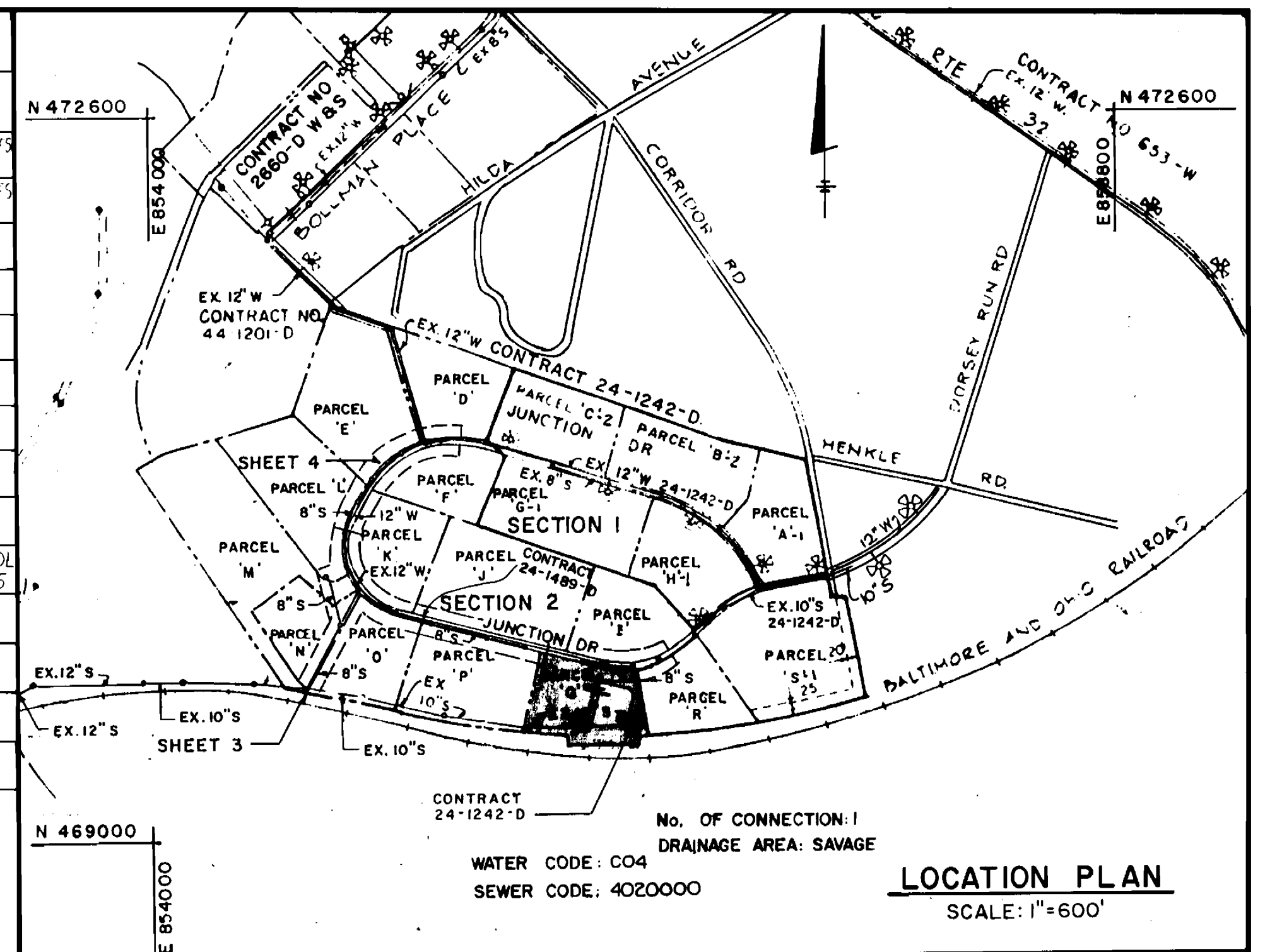
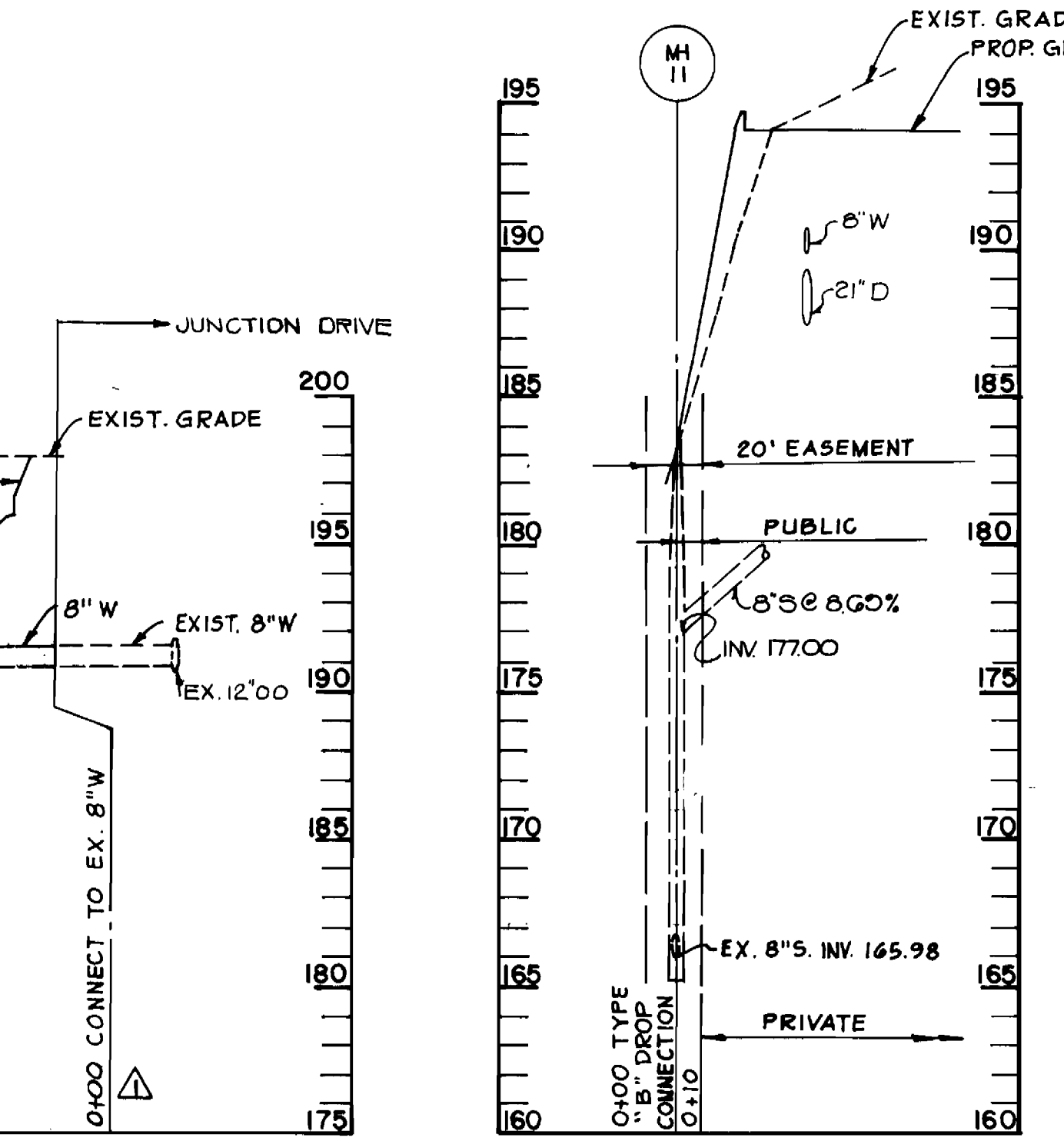


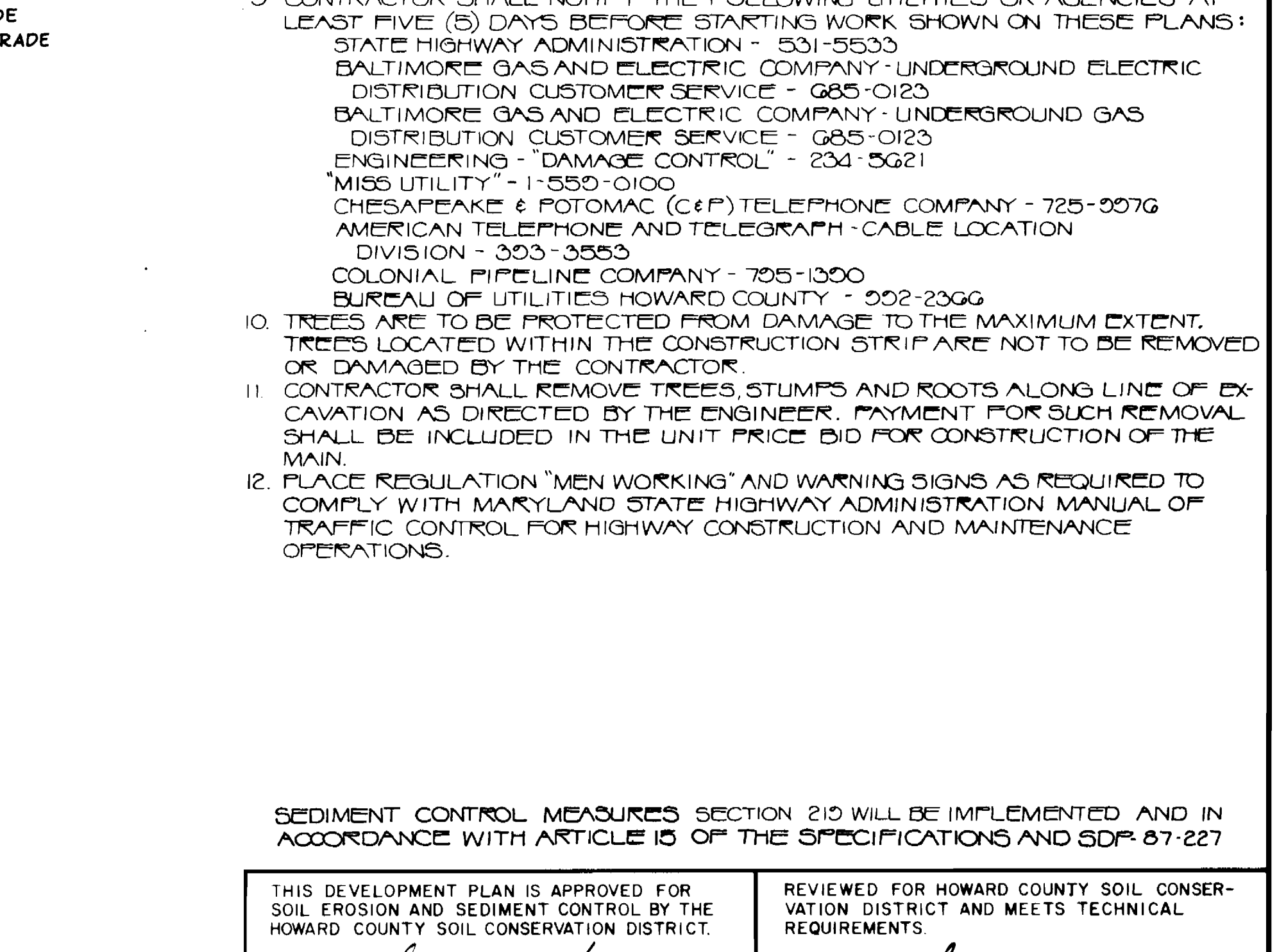
QUANTITIES			
ITEM	PROPOSED	AS BUILT	MATERIAL SUPPLIES
6" WATER MAIN	21 L.F.	21'	ATLANTIC STATES DIP CL 52
8" WATER MAIN	646 L.F.	645'	ATLANTIC STATES DIP CL 52
FIRE HYDRANT	2 EA.	2	UNION FOUNDRY
8" VALVE	2 EA.	2	KENNEDY
4" VALVE	2 EA.	2	KENNEDY
8" x 4" CROSS	1 EA.	1	UNION FOUNDRY
8" x 6" TEE	1 EA.	1	TRINITY VALLEY
8" - 1/8" BEND	4 EA.	4	TRINITY VALLEY
8" x 8" TEE	1 EA.	1	TRINITY VALLEY
8" SEWER MAIN	15 L.F.	15'	FLO CONTROL P.V.C. SOR 35
8" x 6" REDUCER	1 EA.	1	UNION FOUNDRY



WATER MAIN PROFILE
SCALE: HORIZ. 1"=50'
VERT. 1"=5'



WATER MAIN PROFILE
SCALE: HORIZ. 1"=50'
VERT. 1"=5'



SEWER MAIN PROFILE
SCALE: HORIZ. 1"=50'
VERT. 1"=5'

WATER MAIN NOTES

1. ALL WATER MAINS TO BE C.I.P. OR D.I.P. UNLESS OTHERWISE NOTED
2. TOP OF ALL WATER MAINS TO HAVE A MINIMUM OF 3/2" COVER UNLESS OTHERWISE NOTED
3. VALVES ADJACENT TO TEES SHALL BE STRAPPED TO TEES.
4. BLOCK ALL FITTINGS WITH CONCRETE.
5. BURY LINE ELEVATIONS ON FIRE HYDRANTS SHALL BE SET TO THE ELEVATIONS SHOWN ON THE DRAWINGS. ALL FIRE HYDRANTS SHALL BE STRAPPED AND BUTRESSED WITH CONCRETE IN ACCORDANCE WITH STANDARD DETAILS. SOIL AROUND THE FIRE HYDRANT TO BE COMPACTED IN ACCORDANCE WITH SECTIONS 10.03 AND 10.08 OF THE STANDARD SPECIFICATIONS.
6. ALL WATER HOUSE CONNECTIONS SHALL BE FOR AN INSIDE METER SETTING.
7. THE CONTRACTOR SHALL NOT OPERATE ANY WATER MAIN VALVES ON THE EXISTING SYSTEM.

SEWER MAIN NOTES

1. ALL SEWER MAINS SHALL BE C.S.P.X., R.C.S.P., V.C.P.X., A.C.P CLASS 2400 OR PVC UNLESS OTHERWISE NOTED.
2. THE CONTRACTOR SHALL PROVIDE A JOINT IN ALL SEWER MAINS WITHIN 2'-0" OF EXTERIOR MANHOLE WALL.

GENERAL NOTES

1. APPROXIMATE LOCATION OF EXISTING MAINS ARE SHOWN. THE CONTRACTOR SHALL TAKE ALL NECESSARY PRECAUTIONS TO PROTECT EXISTING MAINS AND SERVICES AND MAINTAIN UNINTERRUPTED SUPPLY. ANY DAMAGE INCURRED SHALL BE REPAIRED IMMEDIATELY TO THE SATISFACTION OF THE ENGINEER, AT THE CONTRACTOR'S EXPENSE.
2. ALL HORIZONTAL CONTROLS ARE BASED ON MARYLAND STATE COORDINATES.
3. ALL VERTICAL CONTROLS ARE BASED ON U.S.G.S DATUM.
4. ALL PIPE ELEVATIONS SHOWN ARE INVERT ELEVATIONS.
5. CLEAR ALL UTILITIES BY A MINIMUM OF 6". CLEAR ALL POLES BY 2'-0" MINIMUM OF TUNNEL AS REQUIRED. ANY COST INCURRED TO THE CONTRACTOR FOR TUNNELING OR BRACING AT POLES SHALL BE INCLUDED IN UNIT PRICES BID FOR CONSTRUCTION OF THE MAIN.
6. FOR DETAILS NOT SHOWN ON THE DRAWINGS USE HOWARD COUNTY STANDARD DETAILS.
7. FOR MATERIALS AND CONSTRUCTION METHODS USE HOWARD COUNTY STANDARD SPECIFICATIONS.
8. CONTRACTOR SHALL LOCATE EXISTING UTILITIES A MINIMUM OF TWO (2) WEEKS IN ADVANCE OF CONSTRUCTION OPERATIONS IN THE VICINITY OF PROPOSED UTILITIES AT HIS OWN EXPENSE.
9. CONTRACTOR SHALL NOTIFY THE FOLLOWING UTILITIES OR AGENCIES AT LEAST FIVE (5) DAYS BEFORE STARTING WORK SHOWN ON THESE PLANS: STATE HIGHWAY ADMINISTRATION - 531-5533 BALTIMORE GAS AND ELECTRIC COMPANY - UNDERGROUND ELECTRIC DISTRIBUTION CUSTOMER SERVICE - 685-0123 BALTIMORE GAS AND ELECTRIC COMPANY - UNDERGROUND GAS DISTRIBUTION CUSTOMER SERVICE - 685-0123 ENGINEERING - "DAMAGE CONTROL" - 234-5621 "MISS UTILITY" - 1-550-0100 CHESAPEAKE & POTOMAC (C&P) TELEPHONE COMPANY - 725-3076 AMERICAN TELEPHONE AND TELEGRAPH - CABLE LOCATION DIVISION - 303-3553 COLONIAL PIPELINE COMPANY - 705-1300 BUREAU OF UTILITIES HOWARD COUNTY - 302-2366
10. TREES ARE TO BE PROTECTED FROM DAMAGE TO THE MAXIMUM EXTENT. TREES LOCATED WITHIN THE CONSTRUCTION STRIP ARE NOT TO BE REMOVED OR DAMAGED BY THE CONTRACTOR.
11. CONTRACTOR SHALL REMOVE TREES, STUMPS AND ROOTS ALONG LINE OF EXCAVATION AS DIRECTED BY THE ENGINEER. PAYMENT FOR SUCH REMOVAL SHALL BE INCLUDED IN THE UNIT PRICE BID FOR CONSTRUCTION OF THE MAIN.
12. PLACE REGULATION "MEN WORKING" AND WARNING SIGNS AS REQUIRED TO COMPLY WITH MARYLAND STATE HIGHWAY ADMINISTRATION MANUAL OF TRAFFIC CONTROL FOR HIGHWAY CONSTRUCTION AND MAINTENANCE OPERATIONS.

SEDIMENT CONTROL MEASURES SECTION 219 WILL BE IMPLEMENTED AND IN ACCORDANCE WITH ARTICLE 13 OF THE SPECIFICATIONS AND SDR 67-227

DEPARTMENT OF PUBLIC WORKS
HOWARD COUNTY, MARYLAND

APPROVED: *[Signature]* DATE: 6/30/87
DIRECTOR OF PUBLIC WORKS

APPROVED: *[Signature]* DATE: 6-22-87
CHIEF, BUREAU OF UTILITIES

WHITNEY MAILEY CONSULTING ENGINEERS
1850 YORK ROAD
TIMONIUM, MARYLAND 21093
PHONE: (301) 252-6060

APPROVED: *[Signature]* DATE: 6-28-87
CHIEF, LAND DEVELOPMENT DIVISION



DESIGNED: ART	DATE: 6/17/87
DRAWN: GSB	
CHECKED: PD	
DATE: 6/17/87	
NO. BY	REVISIONS
1	WBCM CHANGES & ADDITIONS TO WATER PROFILES 6/26/87

WATER & SEWER MAIN EXTENSION
PLAN AND PROFILES
CONTRACT No. 24-1666D

600' SCALE MAP NO. _____ BLOCK NO. _____

JUNCTION INDUSTRIAL PARK SECTION 2
PARCEL Q
ELECTION DISTRICT GUILFORD NO. 6
HOWARD COUNTY, MARYLAND

SCALE AS SHOWN
SHEET 1 OF 1