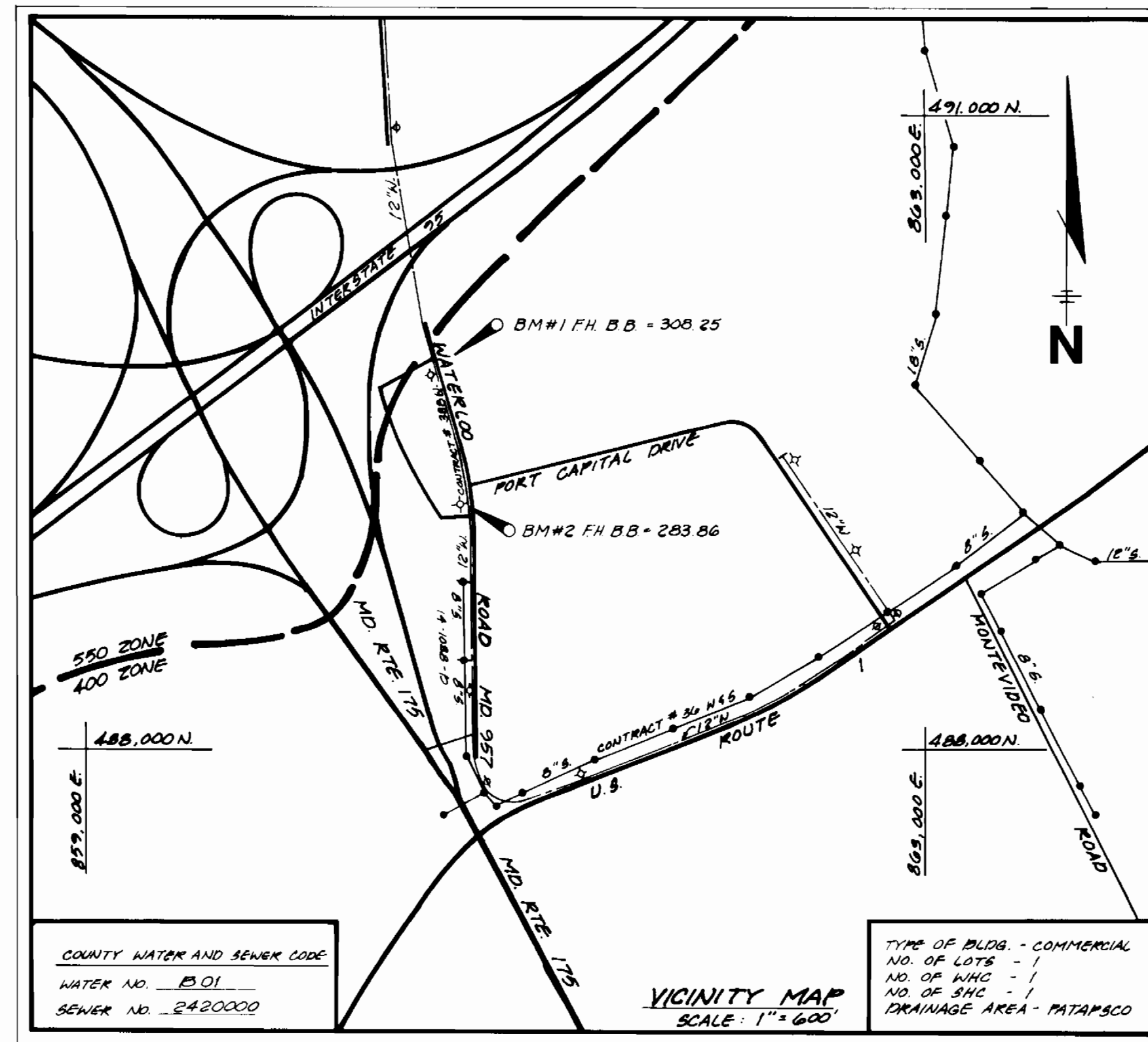


QUANTITIES			
ITEM	ESTIMATED	AS-BUILT	MATERIAL/SUPPLIER
8" SEWER	498 LF	495 LF	CHARLOTTE PIPE
MANHOLES	2	2	ATLANTIC CONCRETE
8" WATER	367 LF	368 LF	ATLANTIC STATES / A&P
FIRE HYDRANT	3	3	MUELLER CO A&P WATER
12" x 8" T&V	2	2	MUELLER CO A&P WATER
1 1/4" BEND	1	---	---
6" VALVE	3	3	MUELLER CO A&P WATER
8" x 6" TEE	2	2	MUELLER CO A&P WATER
8" x 6" REDUCER	1	1	MUELLER CO A&P WATER



**CONTRACT NO. 24-1659-D
PUBLIC STORAGE INC.
OLD WATERLOO ROAD PSI NO. 0611
WATER AND SEWER EXTENSION
HOWARD COUNTY, MARYLAND
DEPARTMENT OF PUBLIC WORKS**

GENERAL NOTES

- APPROXIMATE LOCATION OF EXISTING MAINS ARE SHOWN. THE CONTRACTOR SHALL TAKE ALL NECESSARY PRECAUTIONS TO PROTECT EXISTING MAINS AND SERVICES AND MAINTAIN UNINTERRUPTED SUPPLY. ANY DAMAGE INCURRED SHALL BE REPAIRED IMMEDIATELY AT THE CONTRACTOR'S EXPENSE.
- ALL HORIZONTAL CONTROLS ARE BASED ON MARYLAND STATE COORDINATES.
- ALL VERTICAL CONTROLS ARE BASED ON U.S.G.S. DATUM.
- TOPOGRAPHIC SURVEY FOR WATER MAIN EXTENSION PERFORMED BY PUKDUM AND JESCHKE JANUARY, 1987.
- TOPOGRAPHIC SURVEY FOR SANITARY SEWER EXTENSION PERFORMED BY KAMBER ENGINEERING, INC. APRIL, 1987.
- ALL PIPE ELEVATIONS SHOWN ARE INVERT ELEVATIONS.
- CLEAR ALL UTILITIES BY A MINIMUM OF 6 INCHES. CLEAR ALL POLES BY 2'-0" MINIMUM OR TUNNEL AS REQUIRED.
- FOR ALL STANDARD DETAILS USE HOWARD COUNTY STANDARD DETAILS AND SPECIFICATIONS.
- CONTRACTOR SHALL LOCATE EXISTING UTILITIES IN ADVANCE OF CONSTRUCTION OPERATIONS IN THE VICINITY OF PROPOSED UTILITIES.
- CONTRACTOR SHALL NOTIFY THE FOLLOWING UTILITIES OR AGENCIES AT LEAST FIVE (5) DAYS BEFORE STARTING WORK SHOWN ON THESE PLANS:
STATE HIGHWAY ADMINISTRATION - 331-5533
BALTIMORE GAS AND ELECTRIC COMPANY - UNDERGROUND ELECTRIC DISTRIBUTION ENGINEERING - "DAMAGE CONTROL" - 234-5691
BALTIMORE GAS AND ELECTRIC COMPANY - UNDERGROUND GAS DISTRIBUTION ENGINEERING - 339-0100
CHESAPEAKE AND POTOMAC TELEPHONE COMPANY - 725-9976
AMERICAN TELEPHONE AND TELEGRAPH - CABLE LOCATION DIVISION - 301-393-3553
COLONIAL PIPELINE COMPANY - 781-4641
- TREES ARE TO BE PROTECTED FROM DAMAGE TO MAXIMUM EXTENT. TREES LOCATED WITHIN THE CONSTRUCTION STRIP ARE NOT TO BE REMOVED OR DAMAGED BY THE CONTRACTOR.
- CONTRACTOR SHALL REMOVE TREES, STUMPS AND ROOTS ALONG LINE OF EXCAVATION AS DIRECTED BY THE ENGINEER. PAYMENT FOR SUCH REMOVAL SHALL BE INCLUDED IN THE UNIT PRICE BID FOR EXCAVATION AND BACKFILL FOR WATER AND SEWER MAINS.
- PLACE REGULATION "MEN WORKING" AND WARNING SIGNS AS REQUIRED TO COMPLY WITH MARYLAND STATE HIGHWAY ADMINISTRATION MANUAL OF TRAFFIC CONTROL FOR HIGHWAY CONSTRUCTION AND MAINTENANCE OPERATIONS.
- ALL WATER MAINS TO BE D.I.P. UNLESS OTHERWISE NOTED.
- TOP OF ALL WATER MAINS TO HAVE A MINIMUM OF 3'-1/2" COVER UNLESS OTHERWISE NOTED.
- ALL VALVES SHALL BE STRAPPED TO TREES IN ACCORDANCE WITH STANDARD DETAILS.
- BLOCK ALL FITTINGS WITH CONCRETE. SEE STANDARDS BOUND IN SPECIFICATIONS.
- BURY LINE ELEVATION ON FIRE HYDRANT SHALL BE SET TO THE ELEVATION SHOWN ON THE DRAWINGS. FIRE HYDRANT SHALL BE STRAPPED AND BUTTRESSED WITH CONCRETE IN ACCORDANCE WITH STANDARD DETAILS.
- WATER HOUSE CONNECTION SHALL BE FOR AN INSIDE METER SETTING.
- THE CONTRACTOR SHALL NOT OPERATE ANY WATER MAIN VALVES ON THE EXISTING SYSTEM.
- ALL SEWER MAINS SHALL BE C.I.P., V.C.P., OR A.C.P. CLASS 2400 OR PVC. UNLESS OTHERWISE NOTED.
- THE CONTRACTOR SHALL PROVIDE A JOINT IN ALL SEWER MAINS WITHIN 2'-0" OF EXTERIOR MANHOLE WALL.
- ALL MANHOLES SHALL BE 4'-0" INSIDE DIAMETER, UNLESS OTHERWISE NOTED.
- CONTRACTOR SHALL INSTALL SEDIMENT AND EROSION CONTROL PROTECTION IN ACCORDANCE WITH THE 1989 MARYLAND STANDARDS AND SPECIFICATIONS FOR SOIL EROSION AND SEDIMENT CONTROL.
- SEDIMENT CONTROL MEASURES FOR THIS CONTRACT SHALL BE IMPLEMENTED IN ACCORDANCE WITH SECTION 219 OF THE HOWARD COUNTY STANDARD SPECIFICATIONS VOLUME 1ST EDITION.

project	87064.01	date	4/87
illustration	RND	engineering	MSI
scale	AS	approval	PEB
NOTED			

3	REVISED PER STATE COMMENTS	9/26/87	
2	REVISED PER COUNTY COMMENTS	8/23/87	
1	REVISIONS	4/26/87	
0	ISSUED FOR BIDDING	4/26/87	
NO.	DESCRIPTION	DATE	REVISIONS

**PUBLIC STORAGE INC.
OLD WATERLOO ROAD PSI No. 0611
1ST ELECTION DISTRICT HOWARD COUNTY, MARYLAND
WATER AND SEWER EXTENSION PLAN**

kamber engineering, inc.
civil environmental
gummersburg, md
(301) 840-1030

HOWARD SOIL CONSERVATION DISTRICT
REVIEWED FOR HOWARD SOIL CONSERVATION DISTRICT AND MEETS TECHNICAL REQUIREMENTS.
U.S. SOIL CONSERVATION SERVICE DATE
THIS PLAN IS APPROVED FOR SOIL EROSION AND SEDIMENT CONTROL BY THE HOWARD SOIL CONSERVATION DISTRICT.
HOWARD SOIL CONSERVATION DISTRICT DATE

**DEPARTMENT OF PUBLIC WORKS
HOWARD COUNTY, MARYLAND**

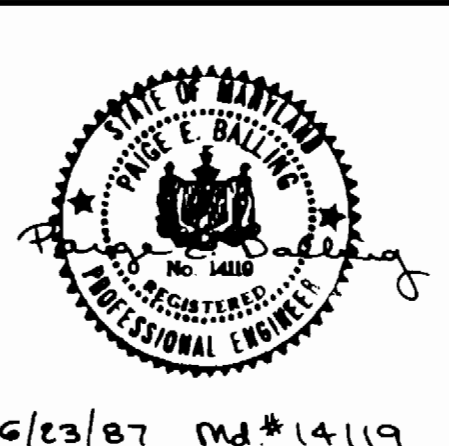
James R. Lewis 8/6/87 DIRECTOR OF PUBLIC WORKS - DATE
Robert M. Benning 8-3-87 CHIEF - BUREAU OF UTILITIES - DATE
[Signature] 8-6-87 CHIEF - BUREAU OF ENGINEERING - DATE
[Signature] CHIEF - LAND DEVELOPMENT DIVISION - DATE

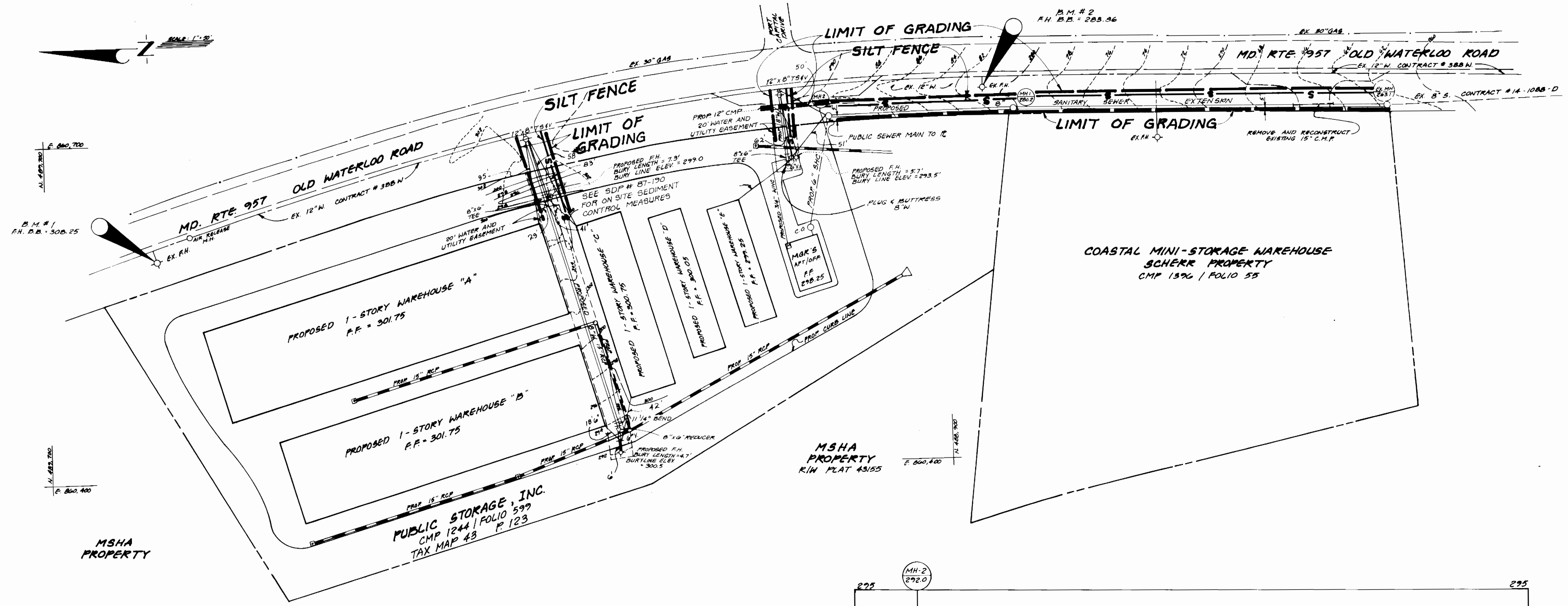
CONTRACT NO. : 24-1659-D

TITLE SHEET

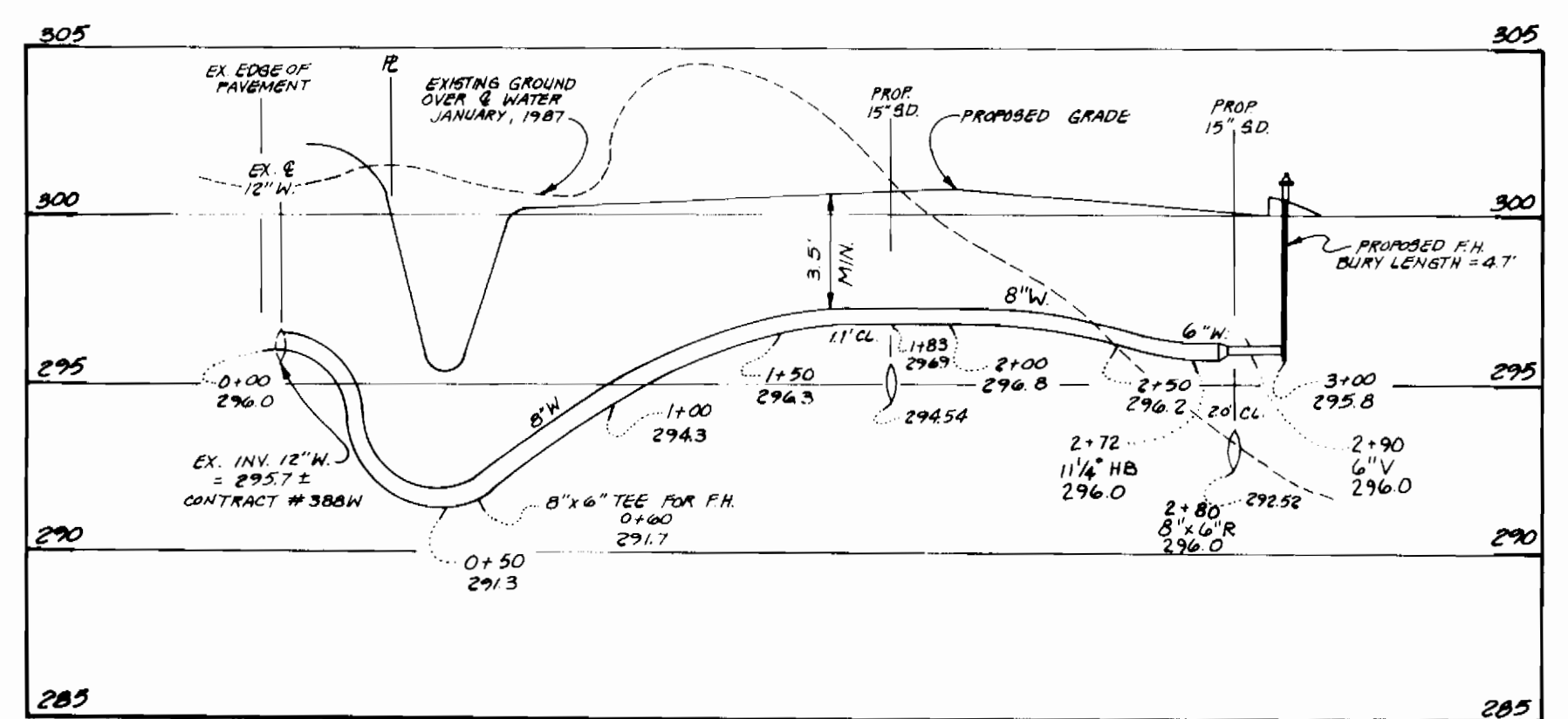
**PUBLIC STORAGE INC.
OLD WATERLOO ROAD PSI No. 0611
FIRST ELECTION DISTRICT**

DRAWING NO. 1 OF 2
SCALE AS SHOWN

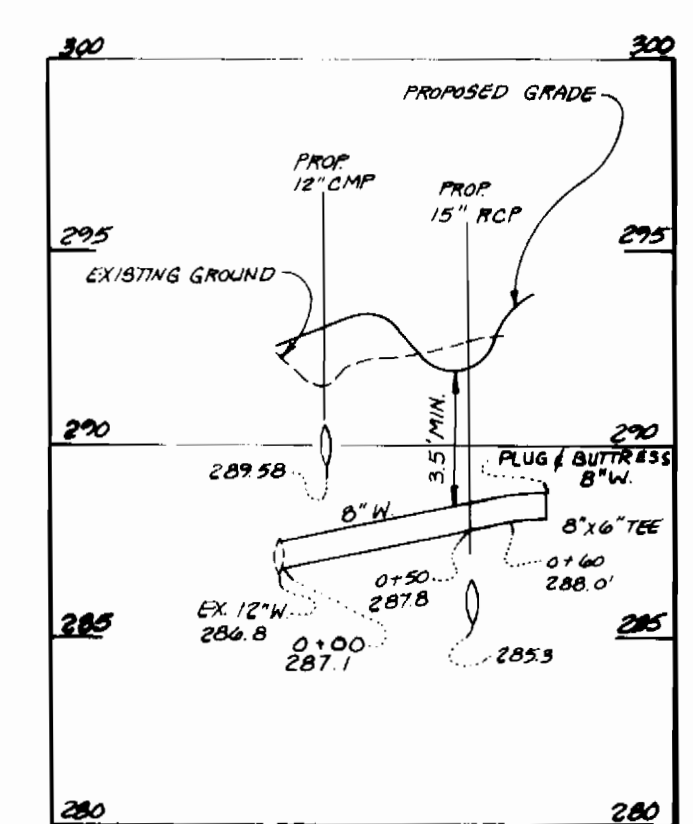




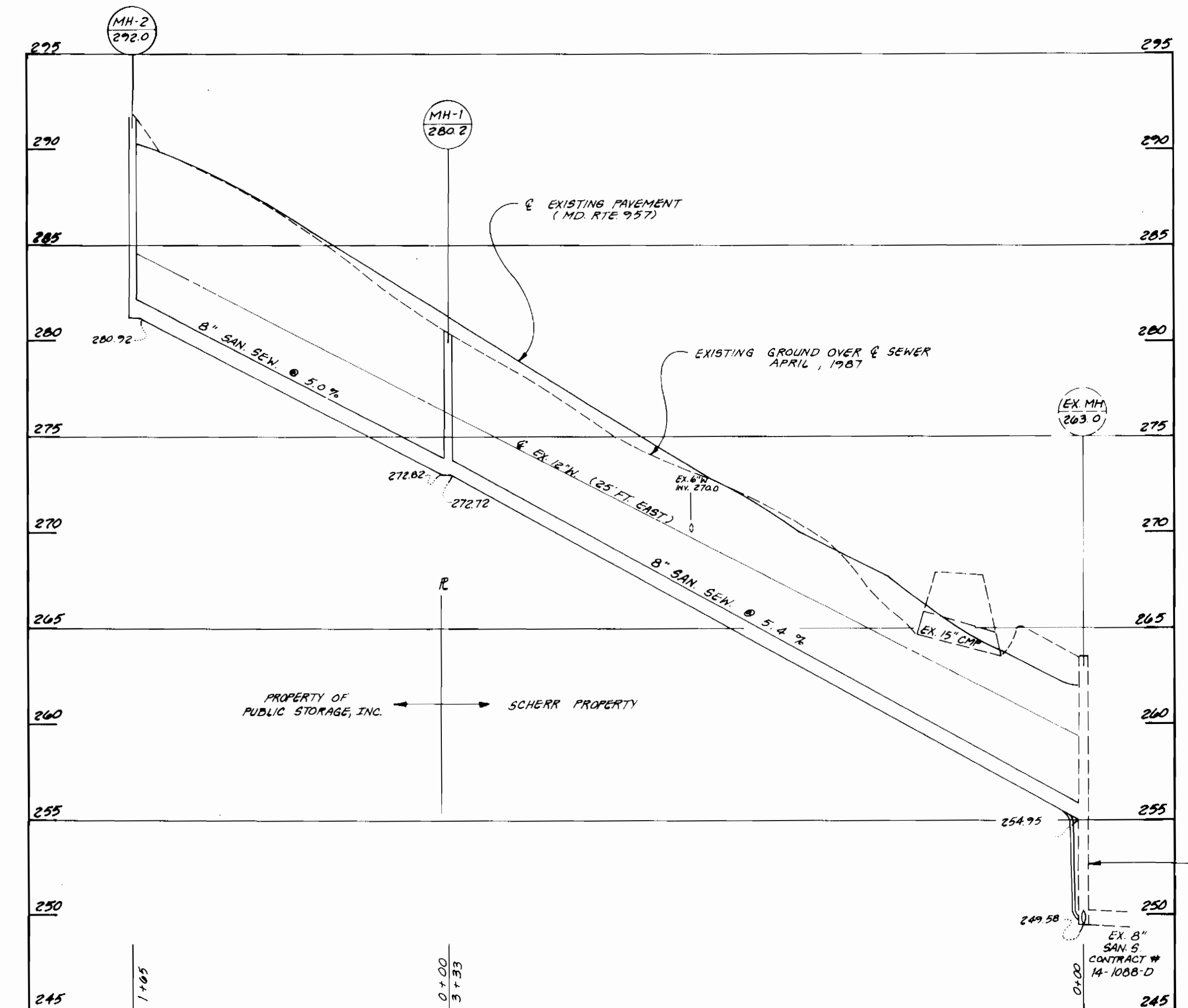
PLAN VIEW
SCALE: 1" = 50'



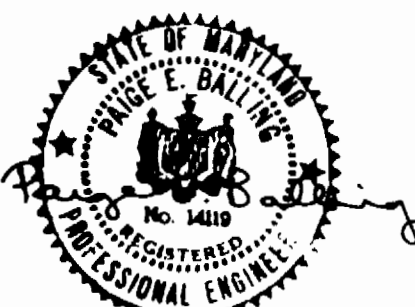
WATER MAIN PROFILES
SCALE: H: 1" = 50'
V: 1" = 5'



SCALE: H: 1" = 50'
V: 1" = 5'



SANITARY SEWER PROFILE
SCALE: H: 1" = 50'
V: 1" = 5'



DEPARTMENT OF PUBLIC WORKS
HOWARD COUNTY, MARYLAND

James H. Lewis 8/1/87
DIRECTOR OF PUBLIC WORKS - DATE

Richard M. Berger 8-2-87
CHIEF - BUREAU OF UTILITIES - DATE

James H. Lewis 8-1-87
CHIEF - BUREAU OF ENGINEERING - DATE

Richard M. Berger 8-2-87
CHIEF - LAND DEVELOPMENT DIVISION

CONTRACT NO. : 24-1659-D

PLAN AND PROFILES OF
WATER AND SEWER MAINS

PUBLIC STORAGE INC.
OLD WATERLOO ROAD PSI No. 0611
FIRST ELECTION DISTRICT

CONTRACT No. 24-1659-D

DRAWING NO. 2	SCALE AS SHOWN	AS-BUILT 9-26-88
OF 2		

kamber engineering, inc.
c/o environmental
gathersburg, md (301) 840-1030
baltimore, md (703) 777-9822

date	4/87
project	87064.01
illustration	RMD
revision	MSI
approval	NOTED
date	FEB

date	9/25/87	description	REVISIONS
no.	1	REVISED PER STATE COMMENTS	
no.	2	REVISED PER COUNTY COMMENTS	
no.	3	REVISED PER COUNTY COMMENTS	
no.	4	SUBMITTED TO COUNTY	
no.	5	DATE	

PUBLIC STORAGE INC.
OLD WATERLOO ROAD PSI No. 0611
1ST ELECTION DISTRICT HOWARD COUNTY, MARYLAND
WATER AND SEWER EXTENSION PLAN

kamber engineering, inc.
c/o environmental
gathersburg, md (301) 840-1030
baltimore, md (703) 777-9822